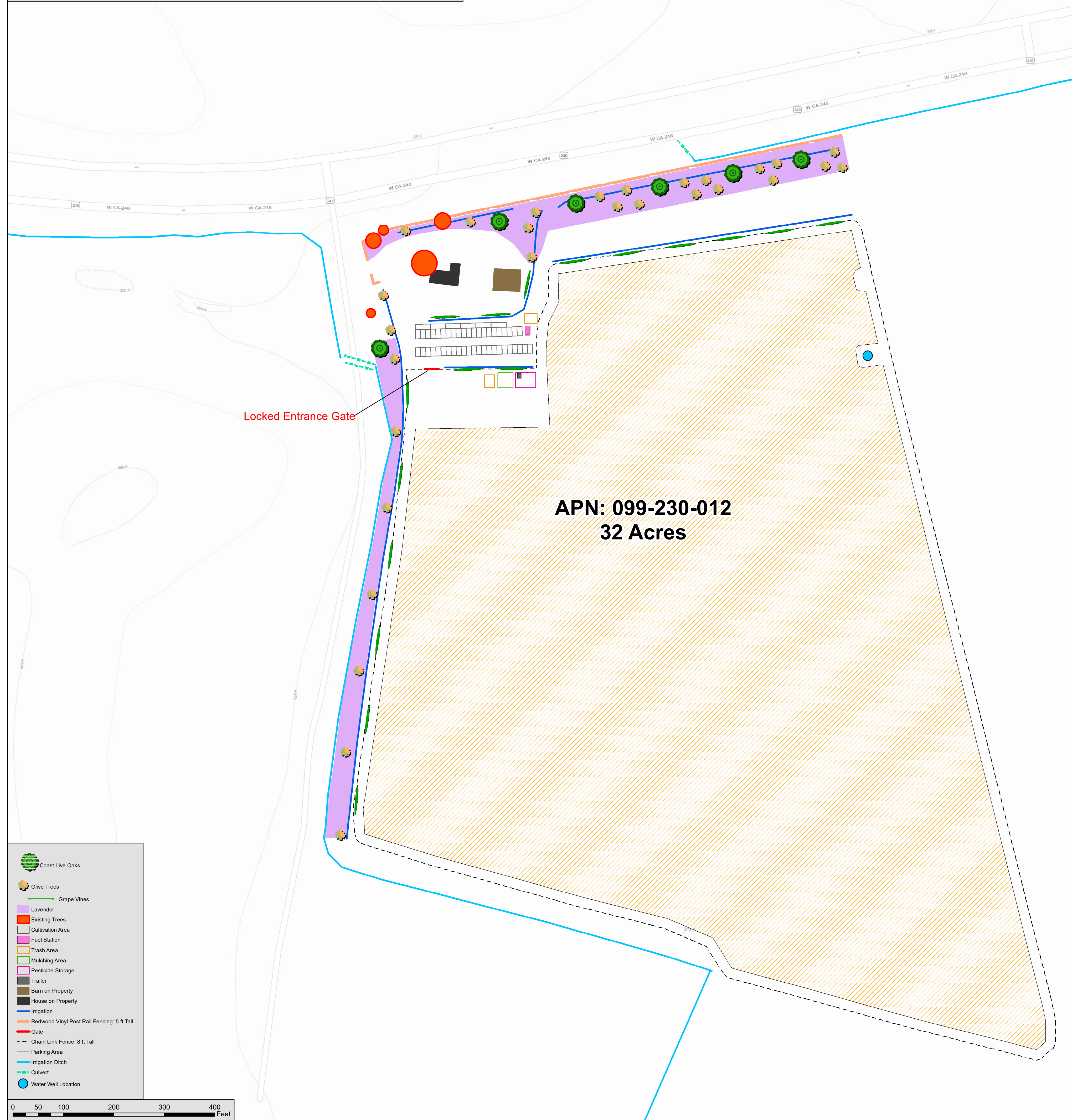


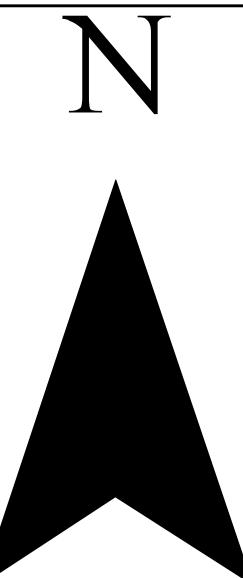
Landscaping and Screening Plan



- Coast Live Oaks
- Olive Trees
- Grape Vines
- Lavender
- Existing Trees
- Cultivation Area
- Fuel Station
- Trash Area
- Mulching Area
- Pesticide Storage
- Trailer
- Barn on Property
- House on Property
- Irrigation
- Redwood Vinyl Post Rail Fencing: 5 ft Tall
- Gate
- Chain Link Fence: 8 ft Tall
- Parking Area
- Irrigation Ditch
- Culvert
- Water Well Location

Santa Rita Valley AG Landscaping and Screening Plan

7680 W Hwy 246
Buellton, CA
Owner: Sebastiano Sterpa
APN: 099-230-012



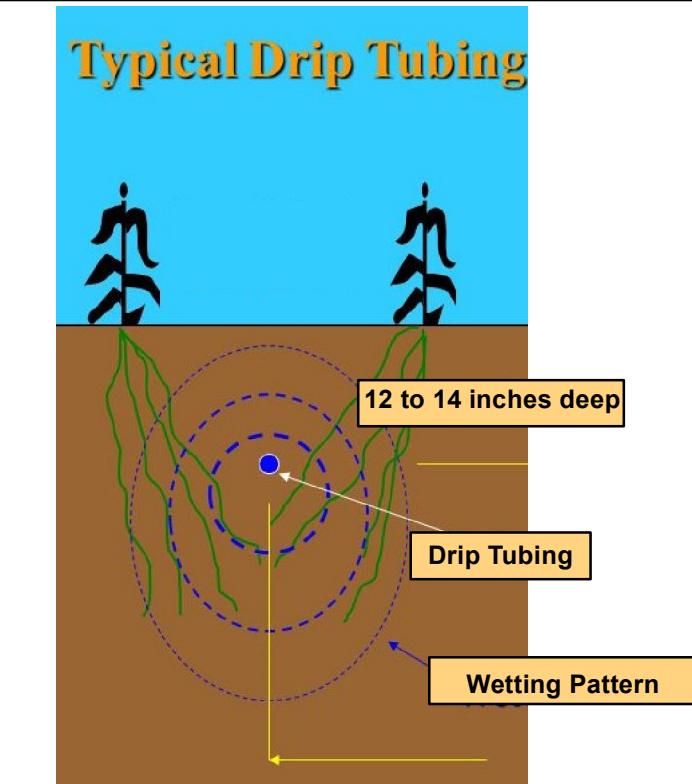
Irrigation Information

To ensure against runoff, irrigation for the screening plants is by a low-pressure subsurface irrigation line (drip irrigation). The drip irrigation system is:

- Uniram model 08UR18024-24 (45-millimeter wall thickness, 0.620" diameter)

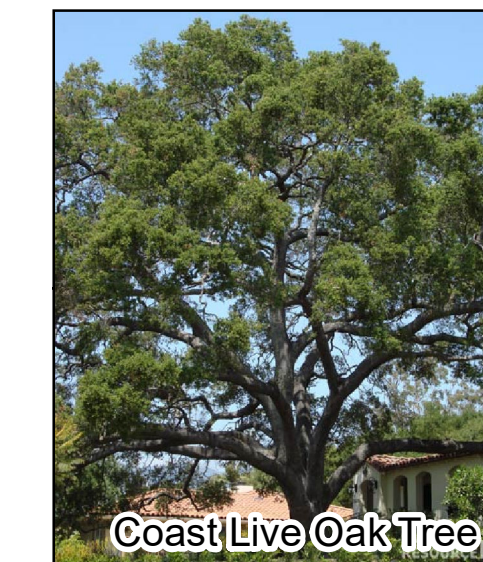
Irrigation will be one hour twice a week at a rate of 0.24 GPH per emitter (one every 24" irrigation line segment).

The polyurethane irrigation line will be placed 12-14" below the ground surface



Landscaping and Screening Information

The Applicant will plant 6 coast live oaks. The Coast Live Oak are a beautiful evergreen oak. This tree typically has a much-branched trunk and reaches a mature height of 10-25 meters. Some specimens may attain an age exceeding 250 years, with trunk diameters up to three or four meters. Its form is highly variable, and younger trees are often shrubby. The trunk, particularly for older individuals, may be highly contorted, massive and gnarled. The crown is broadly rounded and dense, especially when aged 20 to 70 years; in later life the trunk and branches are more well defined and the leaf density lower. The leaves are dark green, oval, often convex in shape, 2-7 cm long and 1-4 cm broad; the leaf margin is spiny-toothed, with sharp thistly fibers that extend from the lateral leaf veins. They will attract a variety of birds and butterflies.



Coast Live Oaks are fairly easy to grow. Water 1x per week the first year after planting, decreasing to about 1x per month after the first year, until the tree is about 10 feet tall. After that, it's best to avoid direct summer water entirely. In areas with less rainfall, best to plant Coast Live Oaks near an irrigated area. They'll get the water they need by stretching their roots out to the wetter area, but they'll keep the area close to their trunk nice and safely dry. Once they get their roots into the wetter areas, they'll grow rapidly and stay healthy looking all year round. Gradually, they become islands of natural fertility that improve the health of the nearby plants.



The olive tree, is a large evergreen tree or shrub that grows to 26 to 49 feet. Contractors, business, parks and city municipalities across Southern California have taken advantage of the Olive tree as a disease-free screening plant in both urban and rural areas. The Olive tree is a moderate-growing, equal spread, tree and can grow more than 1 foot per year.

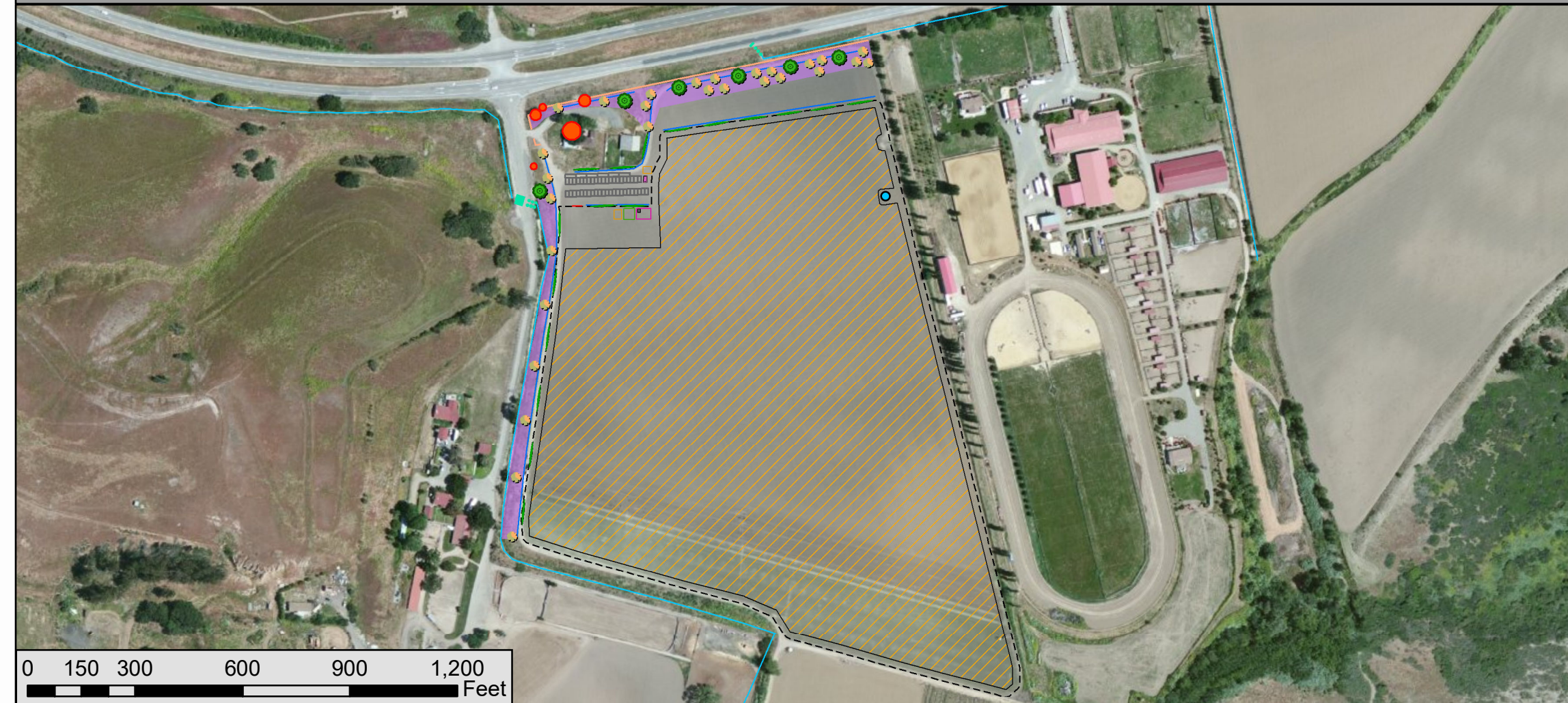


Olive trees require well-drained soil and a sunny position. Once established, olive trees are among the most drought-resistant trees in the world. Typically, low volume spray irrigation and drip irrigation is used in Southern California.

There will be approximately 700 feet of Olive trees planted on the Northern Property line along highway 246. Roughly 40 olive trees will be added to the property.

Plant Specification References:
[https://calscape.org/Quercus-agrifolia-\(Coast-Live-Oak\)](https://calscape.org/Quercus-agrifolia-(Coast-Live-Oak))
<https://gardenspath.com/plants/fruit-trees/grow-olive-trees/>
<https://olivetreegrowers.com/blog.php?view=detail&id=19>

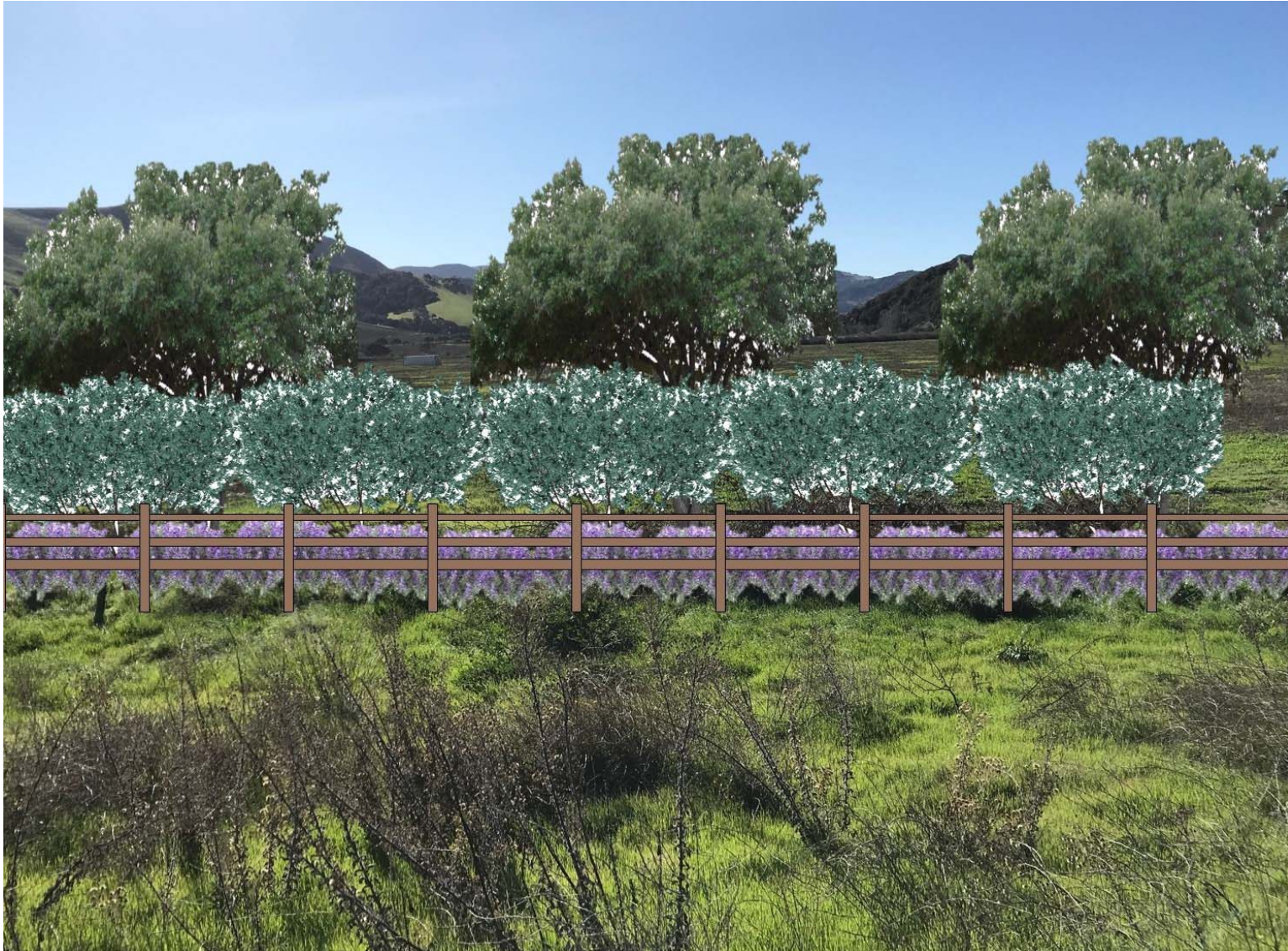
Vicinity Map with Imagery



**Santa Rita Valley Ag – Attachment to Landscape and Screening Plan
Visual Renderings of Proposed Landscaping in 5 Years**



7680 W Hwy 246, Buellton, CA
099-230-012
Case No. 18LUP-00000-00351



7680 W Hwy 246, Buellton, CA
099-230-012
Case No. 18LUP-00000-00351



7680 W Hwy 246, Buellton, CA
099-230-012
Case No. 18LUP-00000-00351