

LATE
DIST

Suzanne Elledge

Sarah Mayer Public Comment - Planning & Permitting Services

From: Laurel Fisher Perez <laurel@sepps.com>
Sent: Thursday, April 25, 2024 6:02 PM
To: sbcob
Cc: Chuck Lande; Ron Caird; Plowman, Lisa; Bell, Allen; Jacquelyne Alexander
Subject: HEU Rezone Board of Sups - May 3, 2024 - Caird/Ekwill Presentation

Follow Up Flag: Follow up
Flag Status: Completed

Caution: This email originated from a source outside of the County of Santa Barbara. Do not click links or open attachments unless you verify the sender and know the content is safe.

Hello,

Below is a link to the Caird/Ekwill Rezone PowerPoint Presentation for the May 3rd Board of Supervisors Hearing on the South County Rezones. Please let me know if you have any trouble opening this:

https://www.dropbox.com/scl/fi/3h8s5vvgk2zdc2563knihw/Caird-Ekwill-Properties_Presentation_Board-of-Sups_5.3.24.pptx?rlkey=eguafdg111fmhbcip8f5w7zrv&st=ecd7o8vb&dl=0

Kind regards, Laurel

Laurel Fisher Perez, AICP
Principal Planner



PLANNING & PERMITTING
SERVICES, INC.

1625 STATE STREET, SUITE 1
SANTA BARBARA, CA 93101
PH: 805-966-2758 x 113

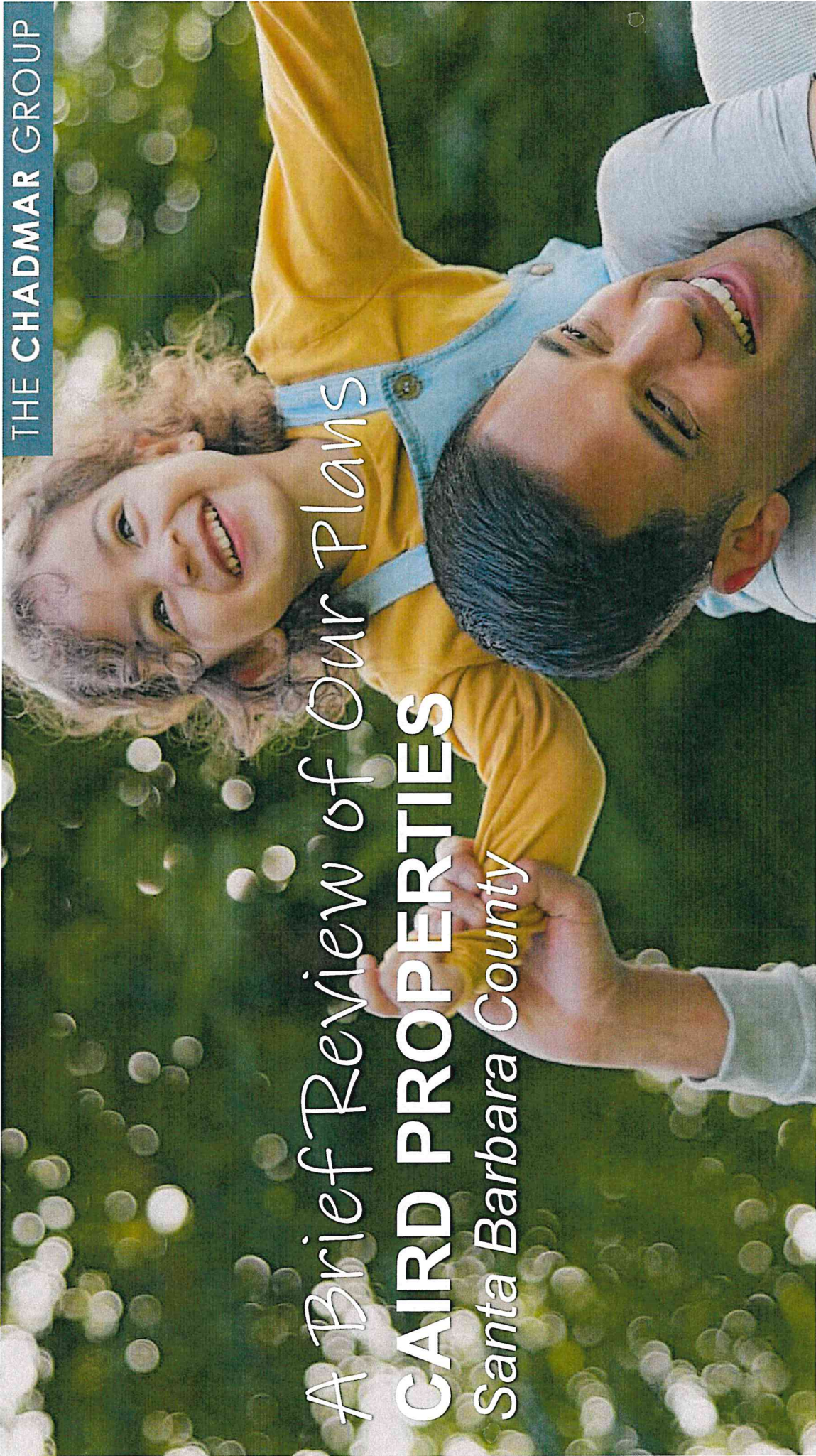
www.sepps.com

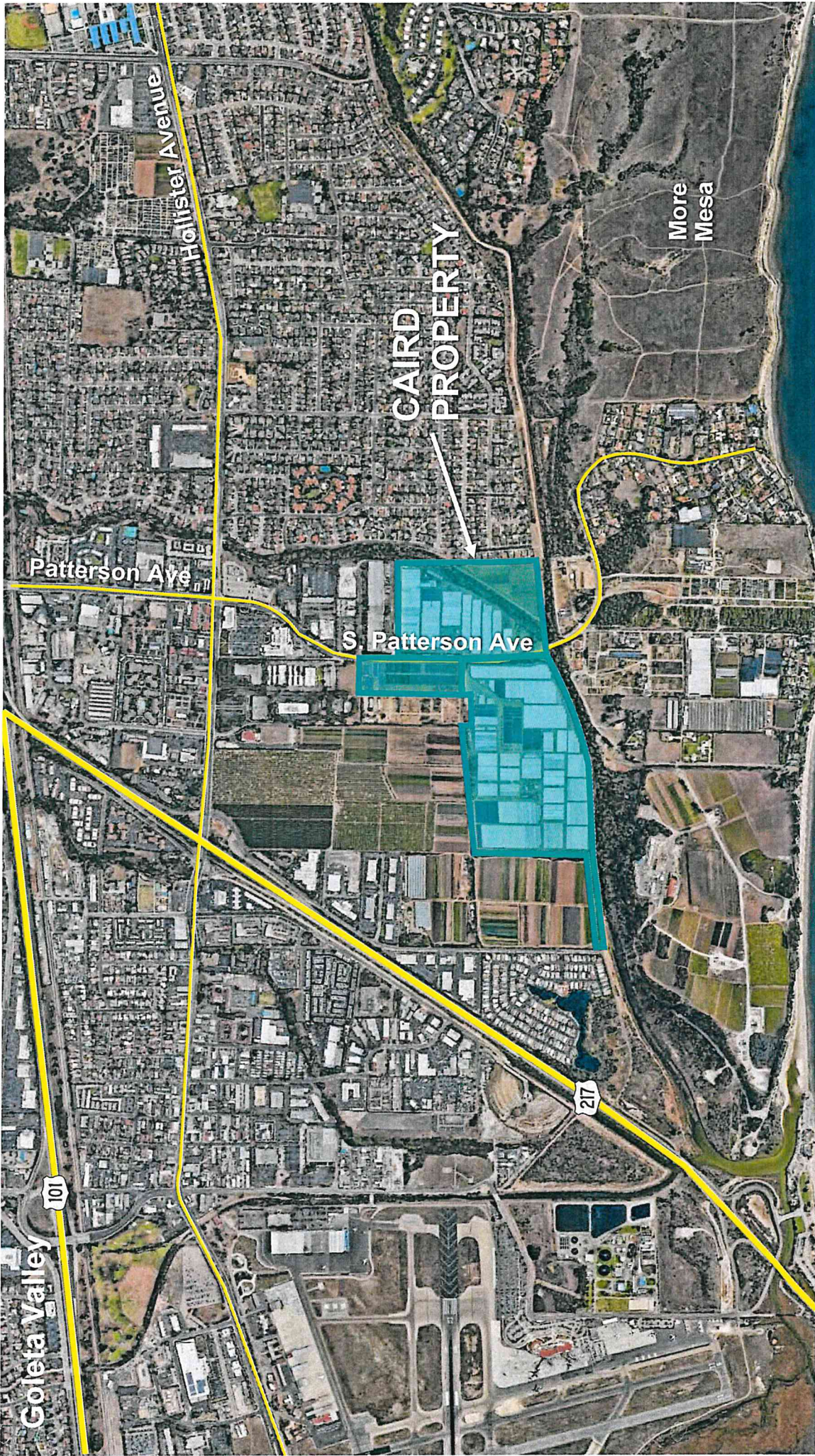
THE CHADMAR GROUP

A Brief Review of Our Plans

CAIRD PROPERTIES

Santa Barbara County





Goleta Valley

101

Hollister Avenue

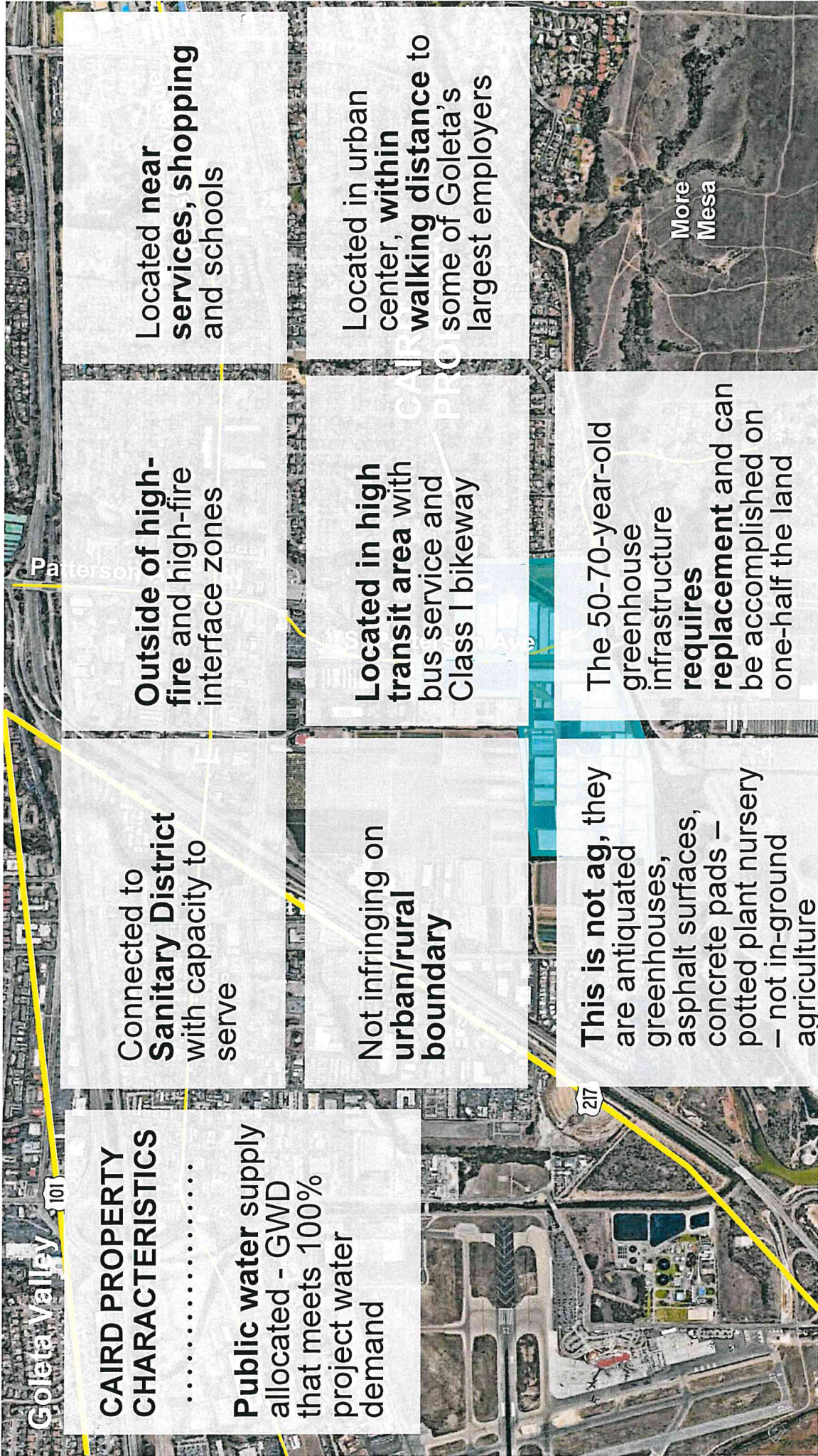
Patterson Ave

S. Patterson Ave

CAIRD
PROPERTY

More
Mesa

217



Goleta Valley 101

CAIRD PROPERTY CHARACTERISTICS

.....

Public water supply allocated - GWD that meets 100% project water demand

Connected to **Sanitary District** with capacity to serve

Not infringing on **urban/rural boundary**

Outside of high-fire and high-fire interface zones

Located in high transit area with bus service and Class I bikeway

Located near **services, shopping** and schools

Located in urban center, **within walking distance** to some of Goleta's largest employers

This is not ag, they are antiquated greenhouses, asphalt surfaces, concrete pads – potted plant nursery – not in-ground agriculture

The 50-70-year-old greenhouse infrastructure **requires replacement** and can be accomplished on one-half the land

More Mesa

217

Providing an Opportunity for Home

Ownership Close to Major Employment Area



NEARBY
EMPLOYERS

Near
Thousands of
Goleta Valley
Jobs



1,600



Seymour
Duncan

120

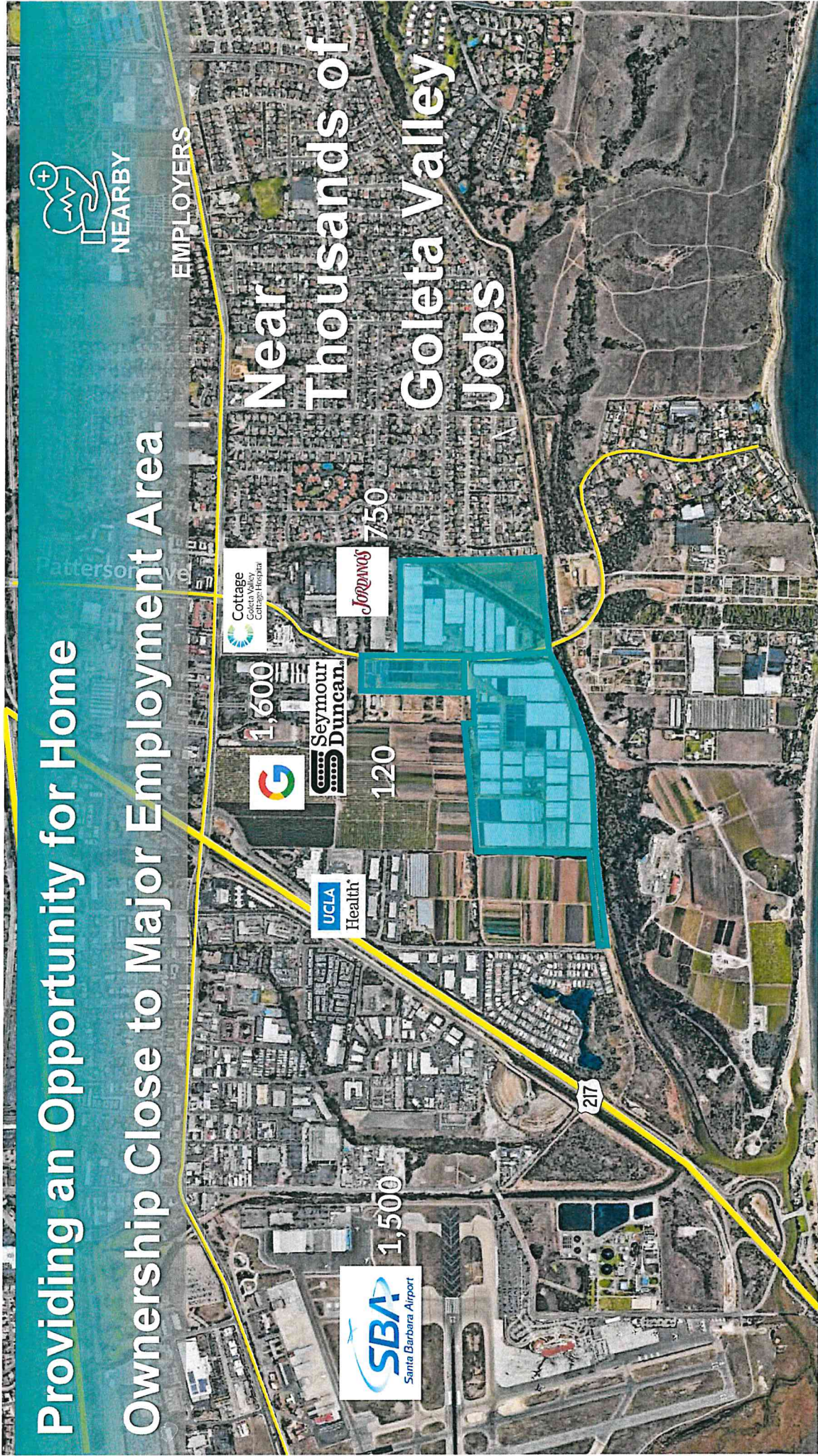


1,500



750

217



Providing an Opportunity for Home Ownership Close to Major Employment Area



ESHA

Environmentally Sensitive
Habitat Area

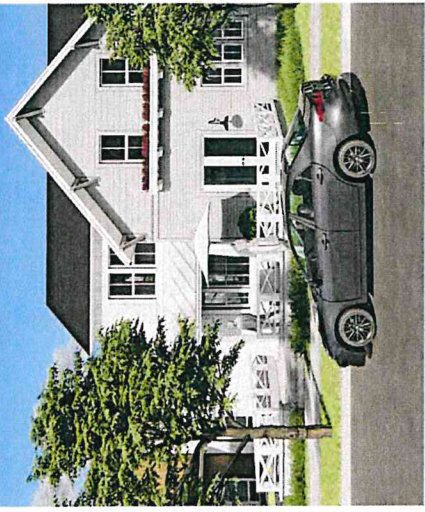
**BUILDABLE
AREA**

AIRPORT ZONE - 2

COASTAL ZONE

Providing an Opportunity for Home Ownership Close to Major Employment Area

Conceptual new single-family homes

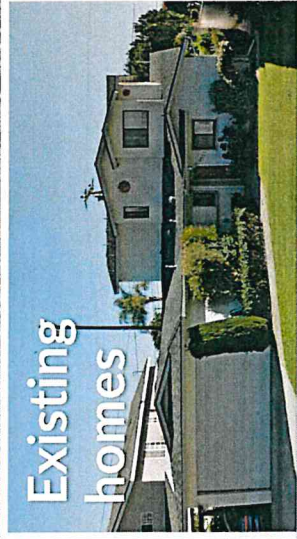


PUBLIC OPEN

Conceptual new single-family homes



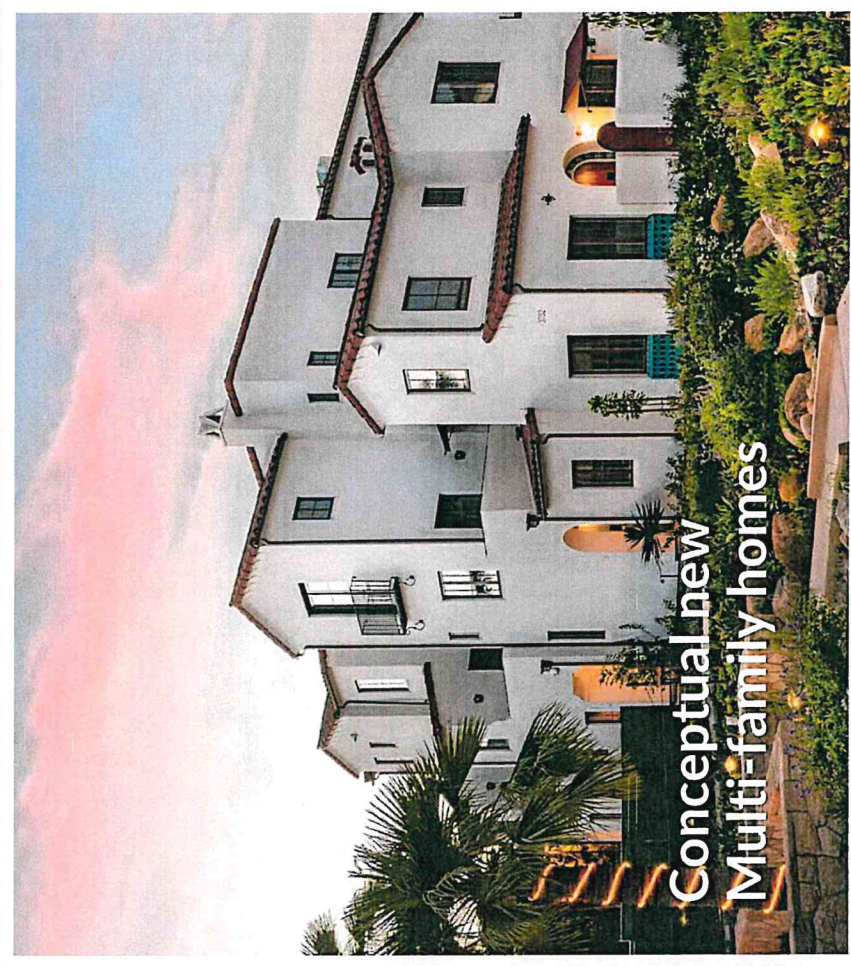
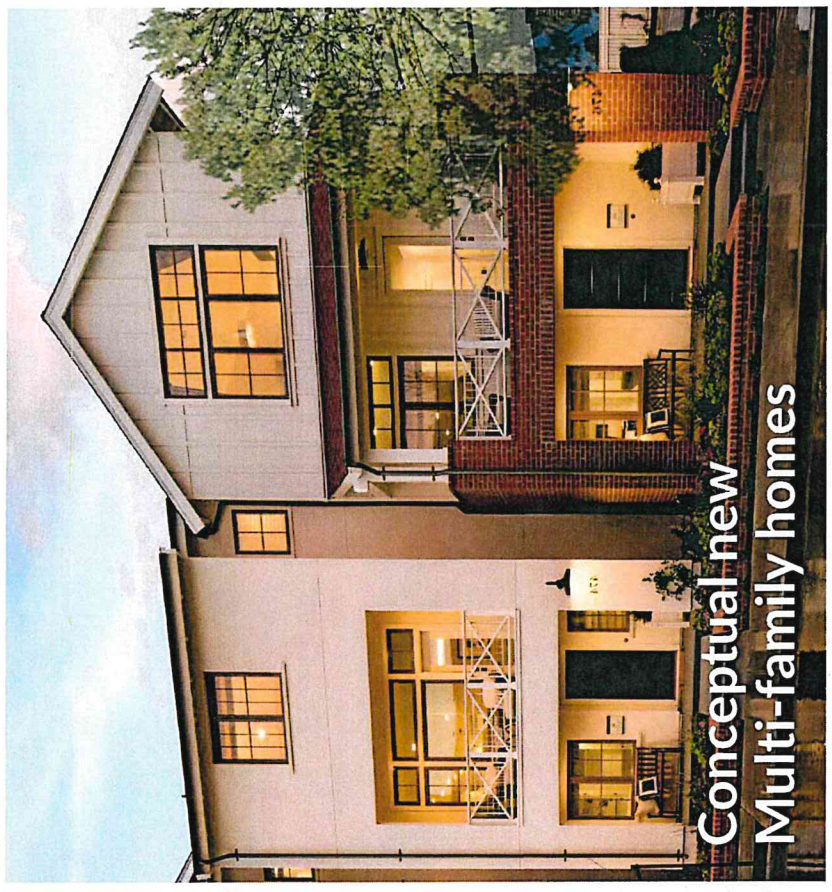
Existing homes

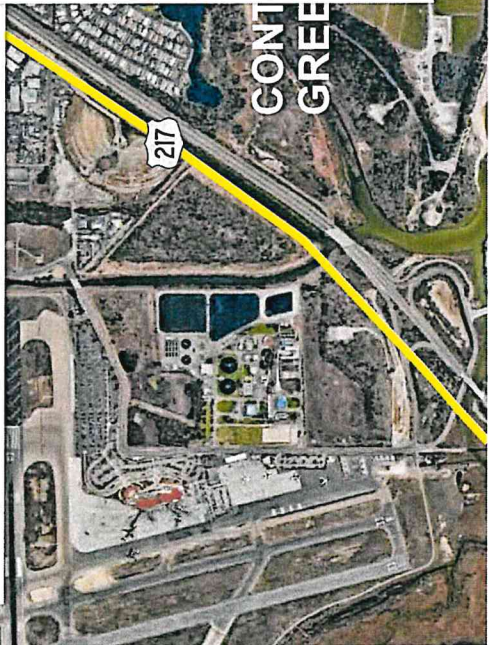
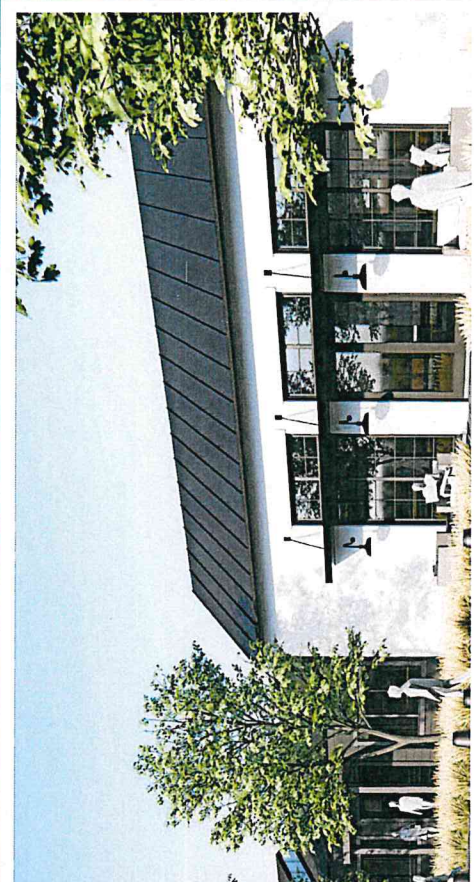


Existing homes

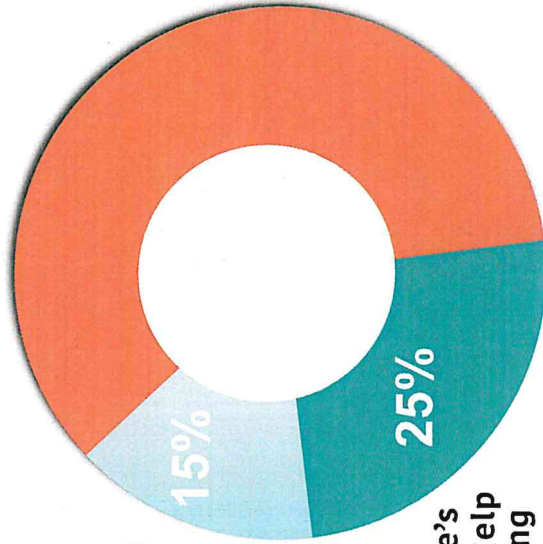


Providing an Opportunity for Home Ownership Close to Major Employment Area





40% Affordable



Partially subsidized
affordable by
nearby employers



THE CHADMAR GROUP

A Brief Review of Our Plans
CAIRD PROPERTIES
Santa Barbara County

