



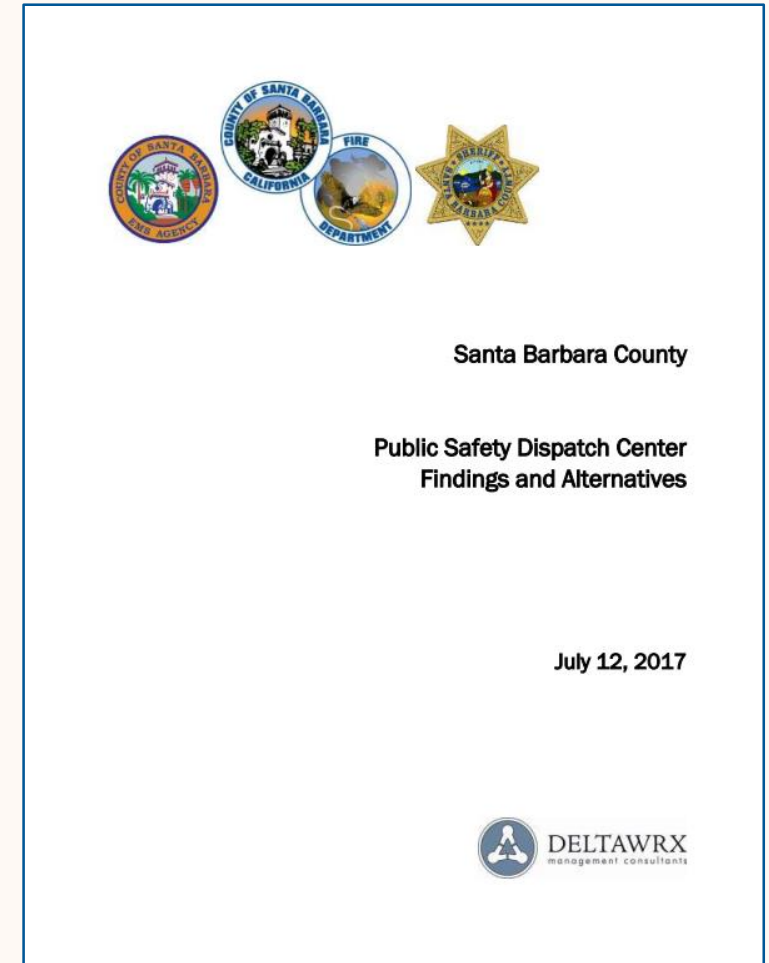
# Public Safety Dispatch Center Update

County Executive Office

May 7, 2019

# Background | BOS Hearing – July 25, 2017

- Received DELTAWRX report and directed a detailed analysis of options
- Report back was delayed due to Thomas Fire and 1/9 Debris Flow



# Background | BOS Hearing – August 28, 2018

- Received an analysis of both options from DELTAWRX
- Board found in favor of DELTAWRX Option 2 (separation)
- Requested an analysis of partnering with the City of Santa Maria



# DELTAWRX Option 1 | Optimize the Current Operation

- Recommended Actions
  - Form a Multi-Disciplinary Executive Oversight Group
  - Replace the Sheriff's Commander with a Civilian Executive Director
  - Several additional actions, some of which have been accomplished
- Estimated Budget: **\$6,255,000**
  - Increase of \$1,139,000 from existing budget



# DELTAWRX Option 2 | Create EMS/Fire Dispatch Center

- Modeled after the Ventura Model
  - Ventura has historically been separate
  - Cost reimbursement is not part of the Ventura model
- Estimated Budget
  - One-time: **\$8,657,000**
  - On-going: **\$7,954,000**
  - Annual increase: **\$2,838,000** (did not take impact to Sheriff into account)



# Background | BOS Hearing – November 13, 2018

- Board approved staff recommendation to:
  - Determine which discipline should move
  - Determine whether Santa Maria's facility is appropriate the house the **Regional Fire Communication Facility** (RFCF)
  - If so, full integration or lease space



# Staff Findings Subsequent to November 13, 2018

- Separation of Fire/Law dispatch operations is technically feasible and offers some significant benefits
- That moving the Sheriff's operation out of the existing center would not be cost effective or operationally desirable
- That Santa Maria would be an excellent partner for a redundant center but that there were significant barriers to full integration
- Staff would pursue identifying alternative locations



# Santa Maria

- Santa Maria has a state of the art facility that handles both police and fire operations and is housed in the police station
- Santa Maria uses a Motorola CAD system for both law and fire
- Santa Maria uses 700MHz (UHF) which is unique in the county and is fully encrypted





# Santa Maria

- Multiple meetings held with the City and affected department heads between August 2018 and February 2019
- Two options were reviewed

1

**Full integration into the existing City dispatch center**

2

**Building out a separate fire dispatch center within the police building**



# Santa Maria | ① Integration

- Use of Motorola CAD
  - Not widely used by Fire agencies
  - Not recommended by Fire
  - Vast majority of fire agencies are on VHF and not encrypted
  - The use of Motorola CAD is a City requirement
- Floor space would not allow for full expansion during major fire events



# Santa Maria | ② Internal Build Out

- Highly disruptive to police operations
- Lack of supporting infrastructure (e.g., parking)
- Essentially a leasing arrangement which could be done anywhere
- Not fiscally advantageous to either the City or the County



# Santa Maria | Findings

- a. Fire agencies would prefer not to transition to Motorola CAD
- b. The build out option is not fiscally advantageous for either the City or the County
- c. The City of Santa Maria's Communications Center would be an excellent redundant dispatch center



# Project Assumptions

- The Regional Fire Communication Facility (RFCF) will meet Essential Services Standards
- Partner Agencies will contribute financially to the Facility's operations
- Formal action by the various elected bodies is necessary before funding assumptions can be incorporated into the plan



# Project Assumptions

- There will be two Public Safety Answering Points (PSAP): the Sheriff will operate the Primary PSAP. Fire will operate a Secondary PSAP.
- Nothing in this transition will negatively impact the Sheriff's budget
- Should the EOC expansion option be selected, there will be no loss of space or functionality at the existing EOC



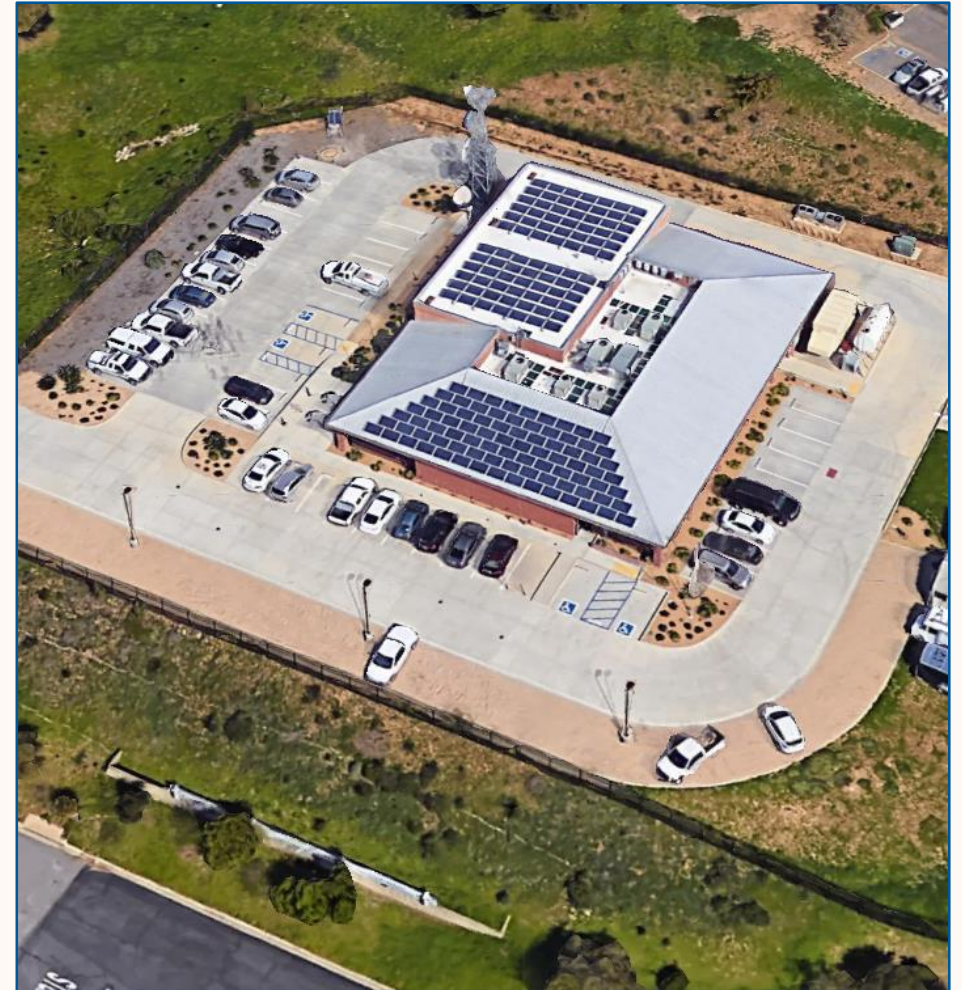
# Alternative Locations

OPTION ①	OPTION ②	OPTION ③
<b>Expand the Emergency Operations Center (EOC)</b>	<b>Co-Locate the Fire and Sheriff PSAPs in the current building (Austin model)</b>	<b>Build a new facility adjacent to the existing facility</b>



# OPTION ① | EOC

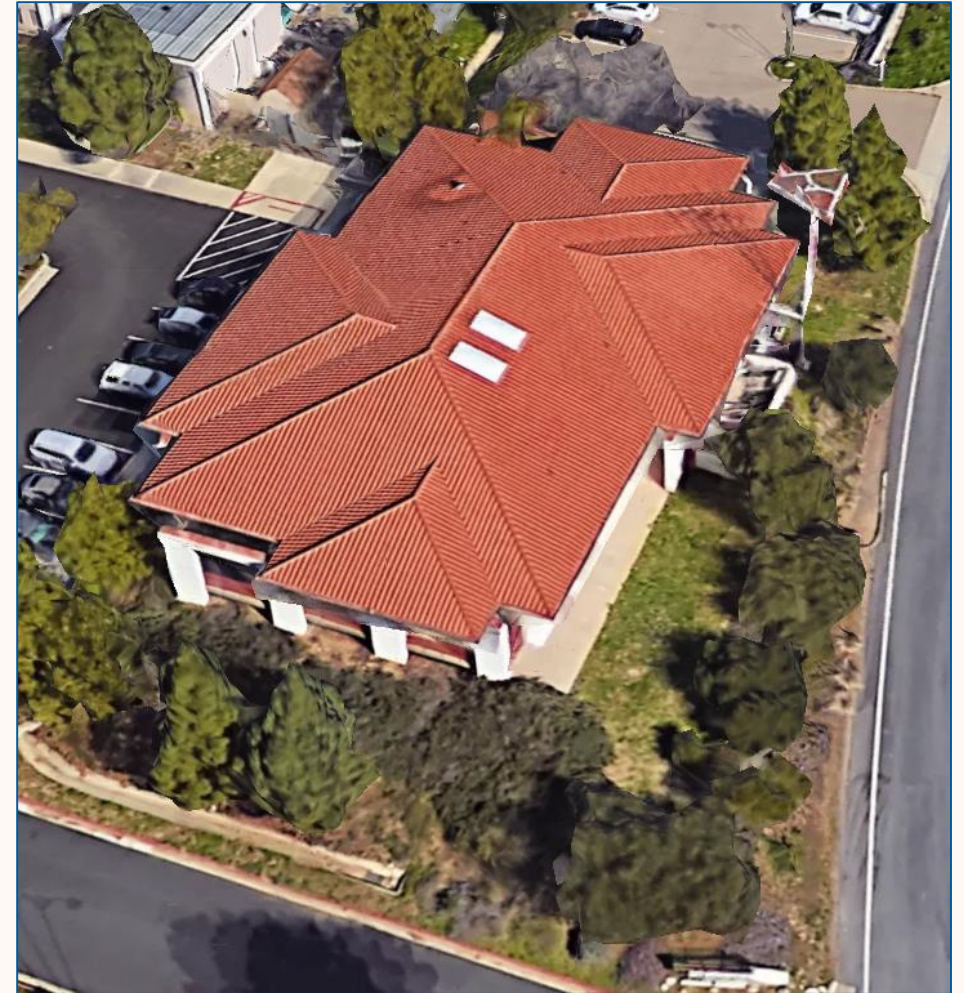
- Positives
  - Expansion out from the west side of the existing facility
  - Adequate infrastructure accessible
  - Built to “Essential Facilities” standards
- Challenges
  - We need to insure that this doesn’t infringe on the existing operation
  - Need to determine any related costs for Station 19
- Preferred by Fire





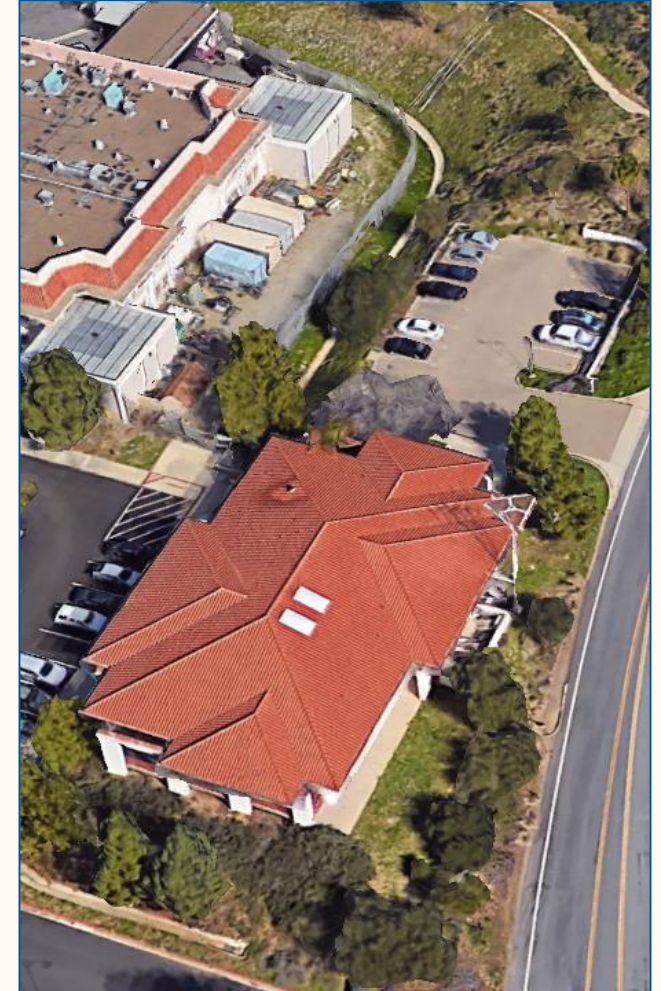
# OPTION ② | Co-Location (Austin, TX Model)

- Positives
  - Technically feasible
  - Floor space adequate
  - Underutilized areas of balconies and floor space
- Challenges
  - Design difficulties
  - Governance issues
  - Could not operate current center during construction
- Discarded as an option



# OPTION ③ | New Facility

- Build a new facility in the parking lot adjacent to the current facility
- Positives
  - Ability to share infrastructure
  - Utilizes existing pad (i.e., the parking lot)
  - Temporary sound wall would allow current operation to continue
- Challenges
  - Cost of building a new facility
  - Loss of parking space
  - Not in north county
- Sheriff does not support this option



# Other Options

- Search for commercial property
- Santa Maria fire facility
- Option 1 of the DELTAWRX report (Sheriff)



# Return with -

- Construction costs for **Options 1 and 3**
- Staffing plans for **Options 1 and 3**
- Estimated costs for upgrading the current Dispatch Center
- Estimated impact on the Sheriff's budget
- Status report on potential regional partners



# Recommended Actions

- a) Receive and file an update from staff on Public Safety Dispatch alternatives
- b) Direct staff to return with a complete estimate of engineering and staffing costs for RFCF Option 1 and Option 3
- c) Provide other direction as appropriate
- d) Determine this action is exempt under CEQA



The background features a large, light-colored building with a prominent clock tower. The tower has two clock faces and a balcony at the top. The building is surrounded by lush greenery, including several tall palm trees and a large, dark green tree. The sky is blue with scattered white clouds. A solid blue vertical bar is on the left side, and a solid orange horizontal bar is at the bottom.

# Questions