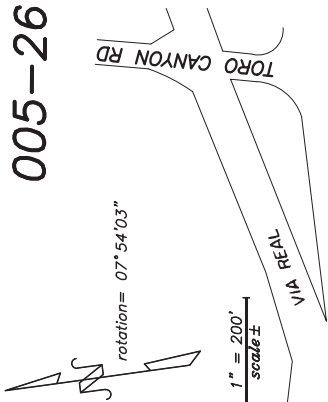
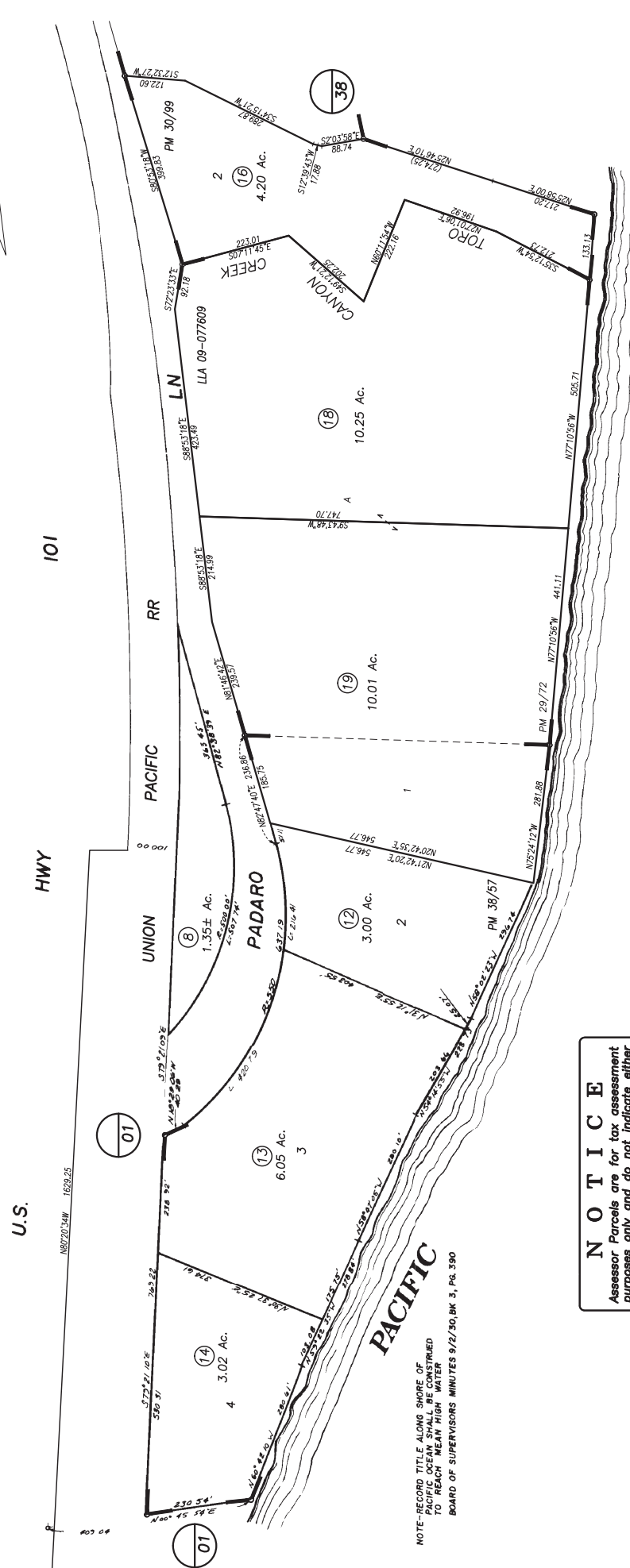
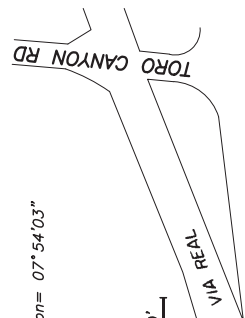


POR. PUEBLO LANDS



005-26



NOTICE
Assessor Parcels are for tax assessment purposes only and do not indicate either parcel legality or a valid building site.

Assessor's Map Bk, 005-Pg, 26
County of Santa Barbara, Calif.

LD/10 9 & 11 into 18 & 19

NOTE-RECORD TITLE ALONG SHORE OF PACIFIC OCEAN SHALL BE CONSTRUED TO REACH MEAN HIGH WATER BOARD OF SUPERVISORS MINUTES 9/2/30, BK 3, PG. 390