



18STM1 Project Areas
GROUPS 1 thru 7:
PHASE 2 Sub-Phases

Montecito, Santa Barbara County, California

Legend

- ProjectAreaGroups
- Bridges
- FC_Basins
- sb-reach_Creeks_Named
- sb-reach_Creeks_UnNamed
- Highways
- Freeways
- 18STM1 Funding Sources
- FEMA
- County Maintained Roads
- SBC_Centerlines_20170405
- Cities
- Parcels_Layer
- Sections
- TownshipAndLandGrantIndex
- Thomas Debris Field
- DeclaredDisasterZone



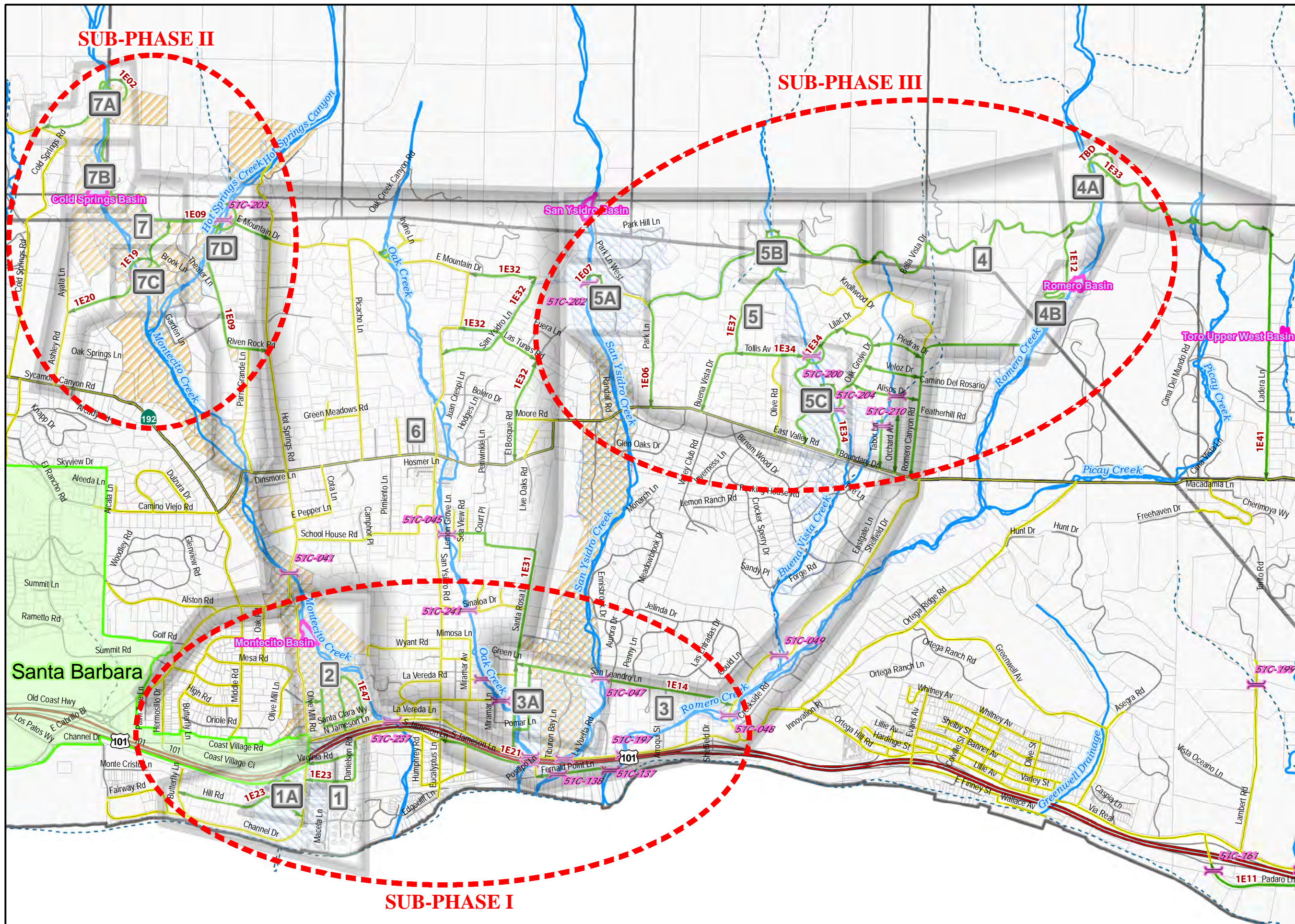
1,300 650 Feet 0 1,300

Coordinate System: State Plane California Zone V NAD 1983

This map is for reference only. Although every effort has been made to ensure the accuracy of information, errors and conditions originating from physical sources used to develop the database may be reflected on this map. Santa Barbara County shall not be liable for any errors, omissions, or damages that result from inappropriate use of this document. No level of accuracy is claimed for the boundary lines shown hereon and lines should not be used to obtain coordinate values, bearings or distances.

Survey Division
Public Works Department
123 East Anapamu Street Suite 222
Santa Barbara CA 93101-2059
(805) 568-3000
<http://www.countyofsb.org/pwd/>

Compiled in May 2019.



SUB-PHASE II

SUB-PHASE III

SUB-PHASE I

Santa Barbara



18STM1 Project Areas

GROUP 1A:

1E23

Montecito, Santa Barbara County, California

Legend

MonumentsEstimated_InDebrisFlow

- FEMA
- ProjectAreaGroups
- Bridges
- FC_Basins
- sb-reach_Creeks_Named
- sb-reach_Creeks_UnNamed
- Highways
- Freeways
- 18STM1 Funding Sources**
- FEMA
- County Maintained Roads
- SBC_Centerlines_20170405
- Cities
- Parcels_Layer
- Sections
- TownshipAndLandGrantIndex
- Thomas Debris Field
- DeclaredDisasterZone

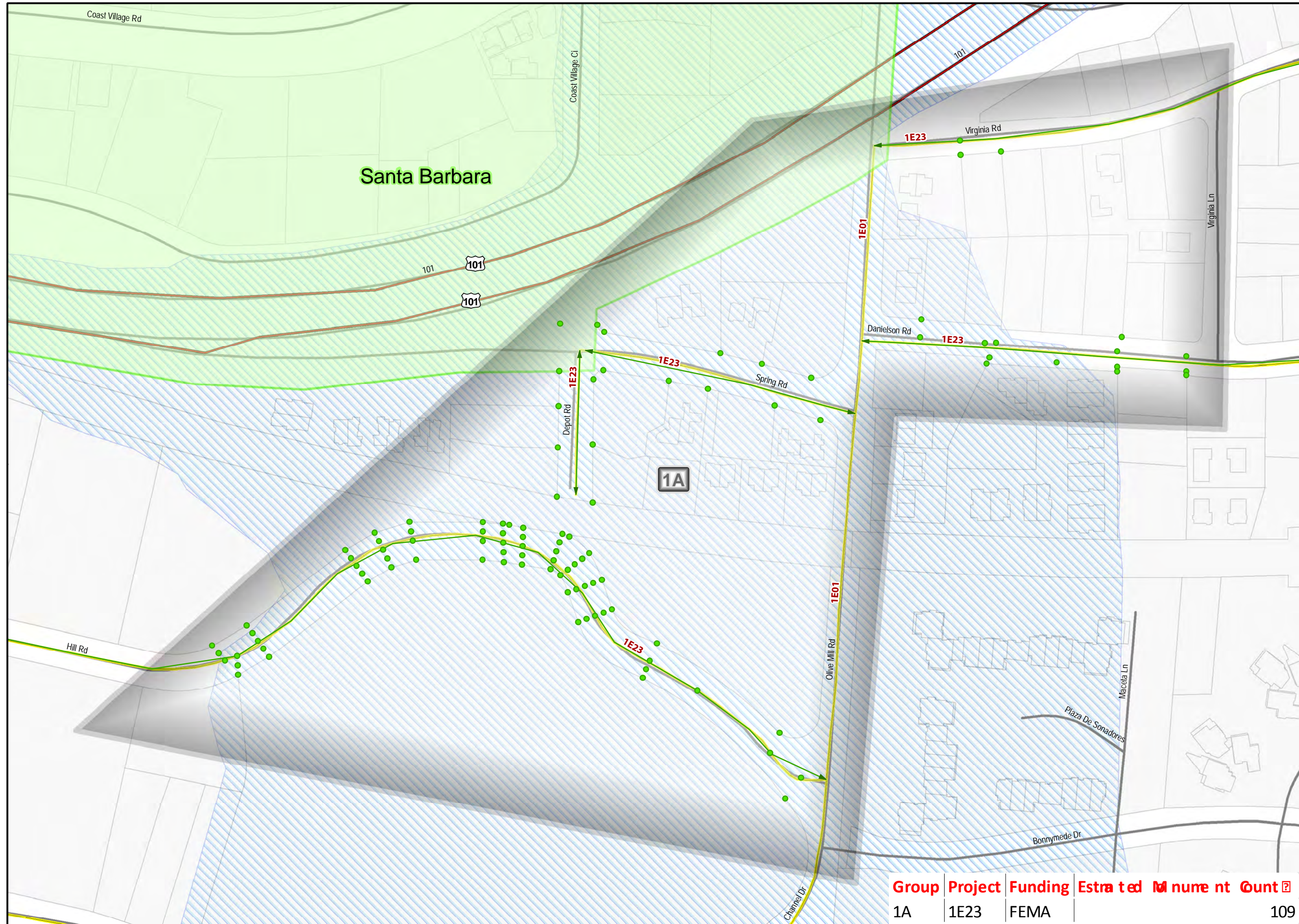


Coordinate System: State Plane California Zone V NAD 1983

This map is for reference only. Although every effort has been made to ensure the accuracy of information, errors and conditions originating from physical sources used to develop the database may be reflected on this map. Santa Barbara County shall not be liable for any errors, omissions, or damages that result from inappropriate use of this document. No level of accuracy is claimed for the boundary lines shown hereon and lines should not be used to obtain coordinate values, bearings or distances.

Survey Division
Public Works Department
123 East Anapamu Street Suite 1
Santa Barbara CA 93101-2059
(805) 568-3000
<http://www.countyofsb.org/pwd/>

Compiled in April 2018.



Group	Project	Funding	Estimated	Monument	Count
1A	1E23	FEMA			109



**18STM1 Project Areas
GROUP 2:**

1E47

Montecito, Santa Barbara County, California

Legend

MonumentsEstimated_InDebrisFlow

18STM1 Funding Sources

- FEMA
- ProjectAreaGroups
- Bridges
- FC_Basins
- sb-reach_Creeks_Named
- sb-reach_Creeks_UnNamed
- Highways
- Freeways
- 18STM1 Funding Sources**
- FEMA
- County Maintained Roads
- SBC_Centerlines_20170405
- Cities
- Parcels_Layer
- sections
- TownshipAndLandGrantIndex
- Thomas Debris Field
- DeclaredDisasterZone



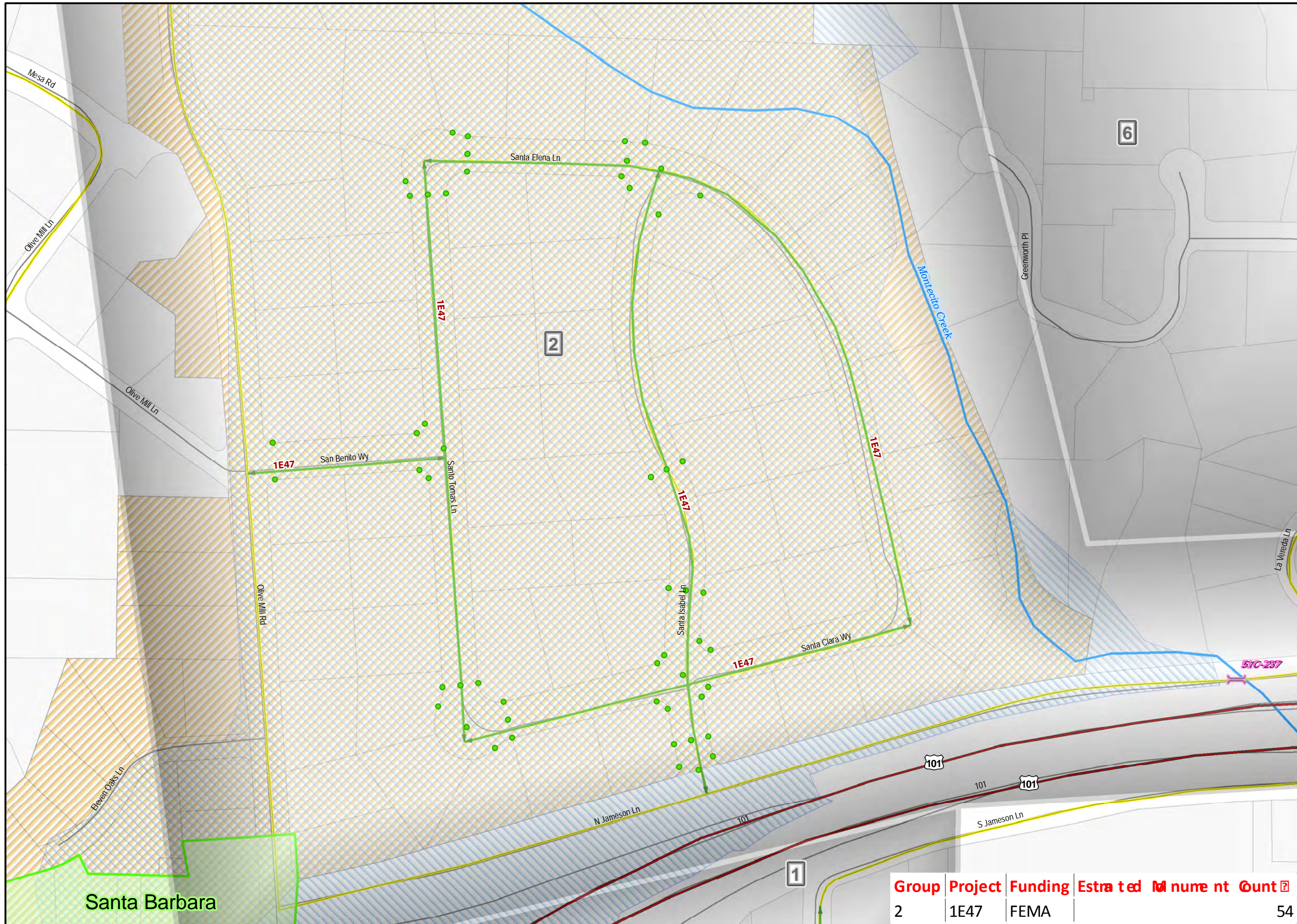
125 62.5 Feet 0 125

Coordinate System: State Plane California Zone V NAD 1983

This map is for reference only. Although every effort has been made to ensure the accuracy of information, errors and conditions originating from physical sources used to develop the database may be reflected on this map. Santa Barbara County shall not be liable for any errors, omissions, or damages that result from inappropriate use of this document. No level of accuracy is claimed for the boundary lines shown hereon and lines should not be used to obtain coordinate values, bearings or distances.

Survey Division
Public Works Department
123 East Anapamu Street Suite 1
Santa Barbara CA 93101-2059
(805) 568-3000
<http://www.countyofsb.org/pwd/>

Compiled in April 2018.



Santa Barbara

Group	Project	Funding	Estimated	Monument	Count
2	1E47	FEMA			54



**18STM1 Project Areas
GROUP 3A:**

1E14

Montecito, Santa Barbara County, California

Legend

MonumentsEstimated_InDebrisFlow

- FEMA
- ProjectAreaGroups
- Bridges
- FC_Basins
- sb-reach_Creeks_Named
- sb-reach_Creeks_UnNamed
- Highways
- Freeways
- 18STM1 Funding Sources**
- FEMA
- County Maintained Roads
- SBC_Centerlines_20170405
- Cities
- Parcels_Layer
- Sections
- TownshipAndLandGrantIndex
- Thomas Debris Field
- DeclaredDisasterZone

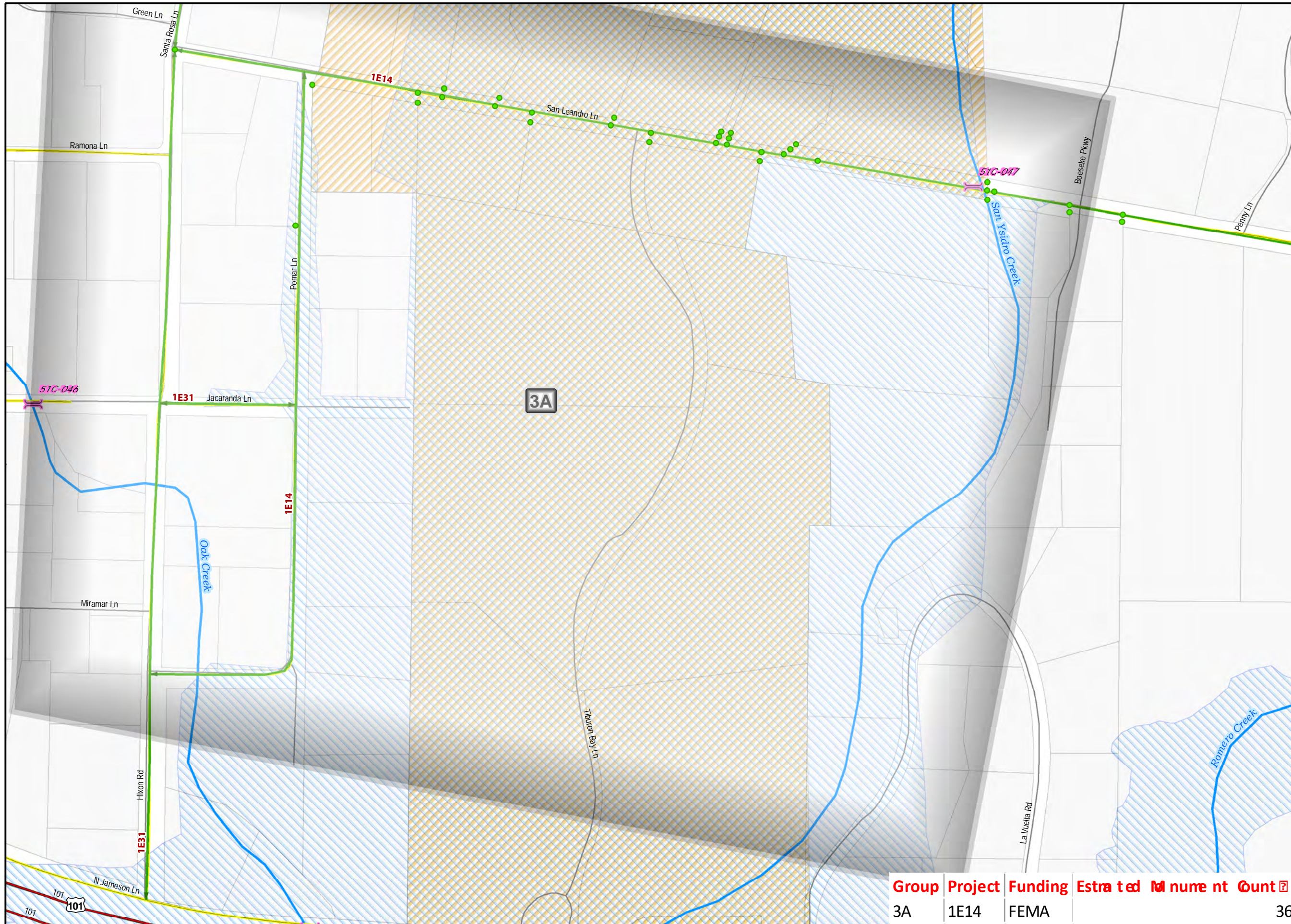


Coordinate System: State Plane California Zone V NAD 1983

This map is for reference only. Although every effort has been made to ensure the accuracy of information, errors and conditions originating from physical sources used to develop the database may be reflected on this map. Santa Barbara County shall not be liable for any errors, omissions, or damages that result from inappropriate use of this document. No level of accuracy is claimed for the boundary lines shown hereon and lines should not be used to obtain coordinate values, bearings or distances.

Survey Division
Public Works Department
123 East Anapamu Street Suite 1
Santa Barbara CA 93101-2059
(805) 568-3000
<http://www.countyofsb.org/pwd/>

Compiled in April 2018.



Group	Project	Funding	Estimated	Monument	Count
3A	1E14	FEMA			36



18STM1 Project Areas GROUP 4:

1E01,1E33

Montecito, Santa Barbara County, California

Legend

MonumentsEstimated_InDebrisFlow

- FEMA
- ProjectAreaGroups
- Bridges
- FC_Basins
- sb-reach_Creeks_Named
- sb-reach_Creeks_UnNamed
- Highways
- Freeways
- 18STM1 Funding Sources**
- FEMA
- County Maintained Roads
- SBC_Centerlines_20170405
- Cities
- Parcels_Layer
- sections
- TownshipAndLandGrantIndex
- Thomas Debris Field
- DeclaredDisasterZone



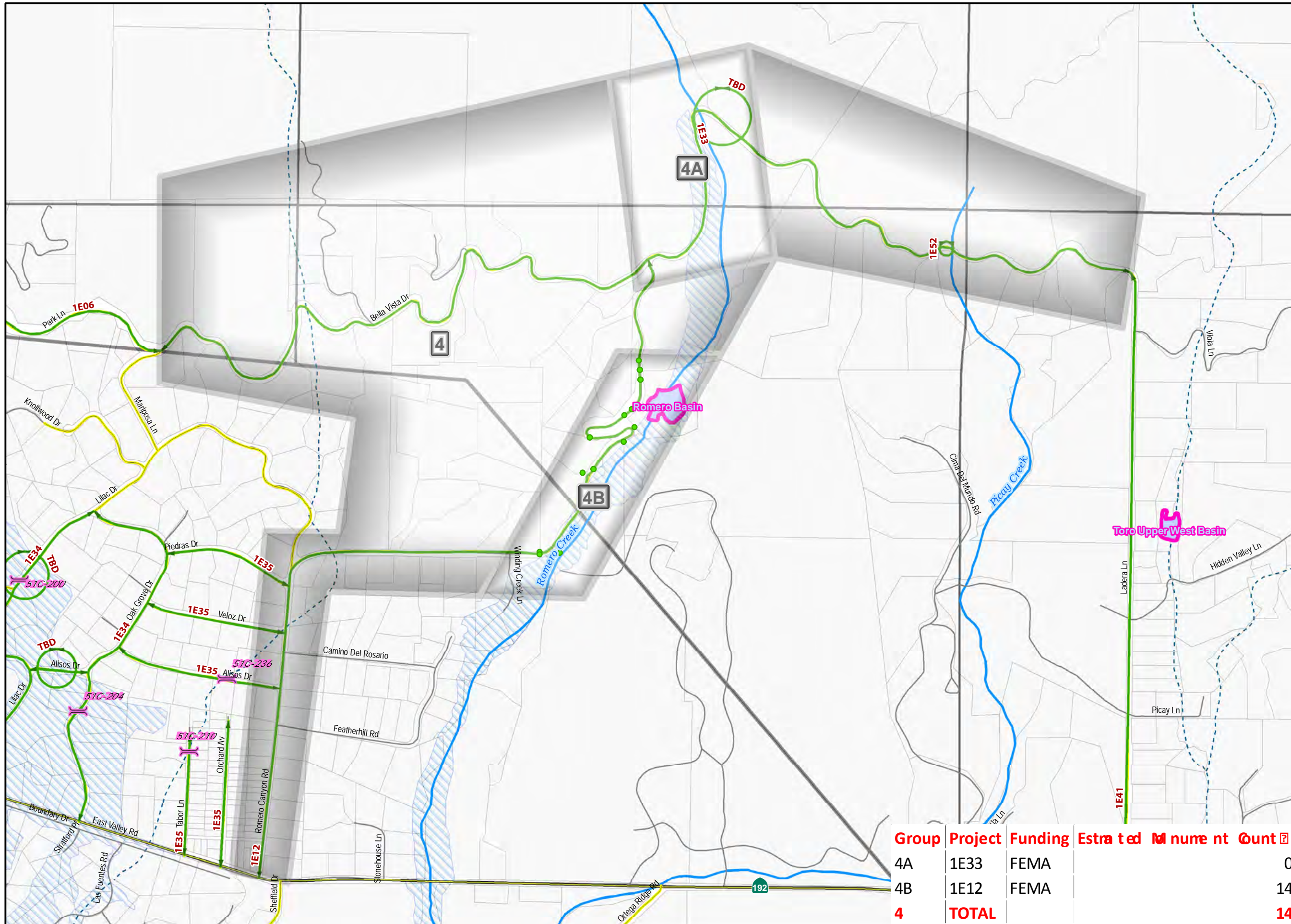
560 280 Feet 0 560

Coordinate System: State Plane California Zone V NAD 1983

This map is for reference only. Although every effort has been made to ensure the accuracy of information, errors and conditions originating from physical sources used to develop the database may be reflected on this map. Santa Barbara County shall not be liable for any errors, omissions, or damages that result from inappropriate use of this document. No level of accuracy is claimed for the boundary lines shown hereon and lines should not be used to obtain coordinate values, bearings or distances.

Survey Division
Public Works Department
123 East Anapamu Street Suite 1
Santa Barbara CA 93101-2059
(805) 568-3000
<http://www.countyofsb.org/pwd/>

Compiled in April 2018.



Group	Project	Funding	Estimated Monument Count
4A	1E33	FEMA	0
4B	1E12	FEMA	14
4	TOTAL		14



**18STM1 Project Areas
GROUP 4A:**

1E33

Montecito, Santa Barbara County, California

Legend

MonumentsEstimated_InDebrisFlow

- FEMA
- ProjectAreaGroups
- Bridges
- FC_Basins
- sb-reach_Creeks_Named
- sb-reach_Creeks_UnNamed
- Highways
- Freeways
- 18STM1 Funding Sources**
- FEMA
- County Maintained Roads
- SBC_Centerlines_20170405
- Cities
- Parcels_Layer
- sections
- TownshipAndLandGrantIndex
- Thomas Debris Field
- DeclaredDisasterZone

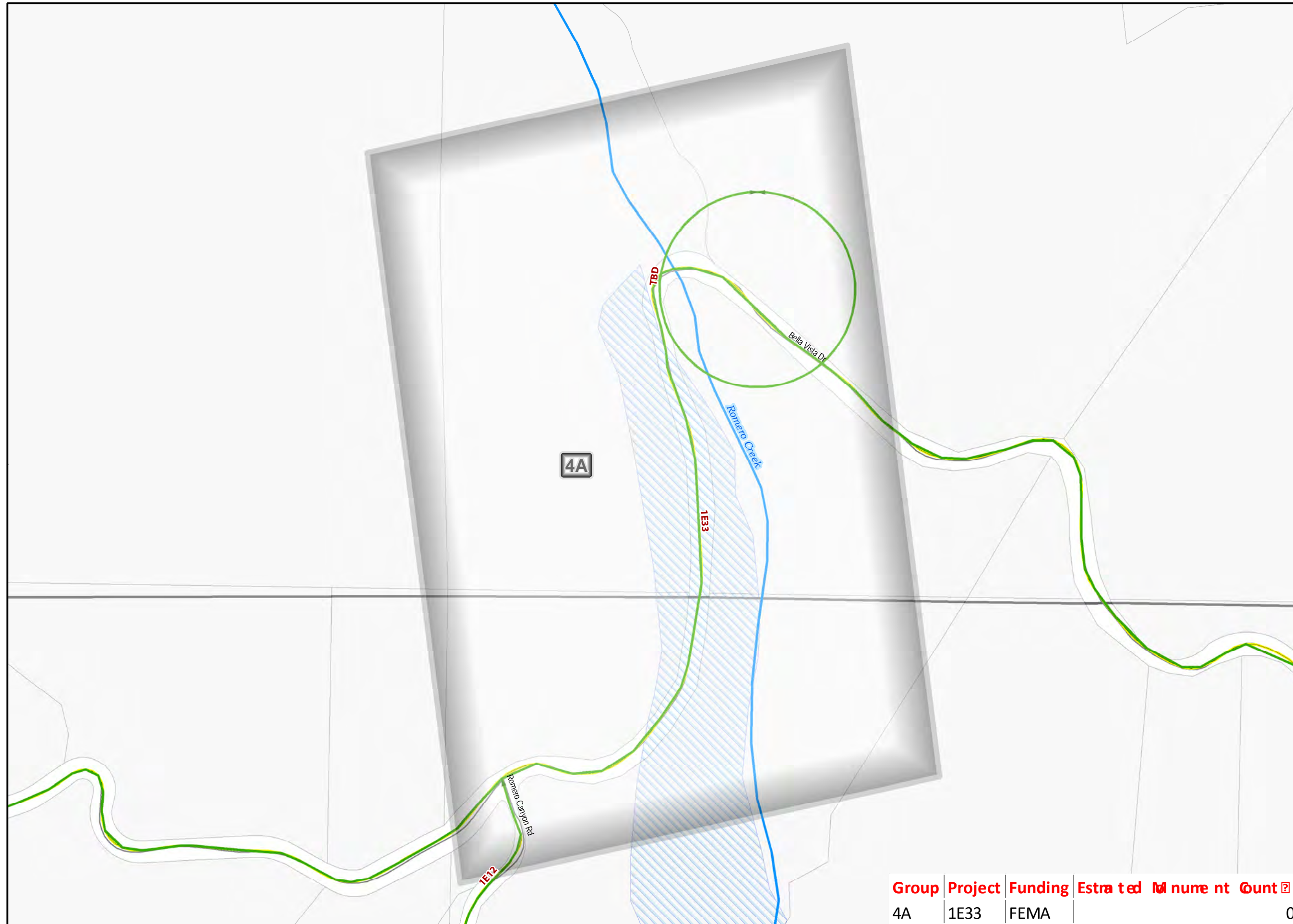


Coordinate System: State Plane California Zone V NAD 1983

This map is for reference only. Although every effort has been made to ensure the accuracy of information, errors and conditions originating from physical sources used to develop the database may be reflected on this map. Santa Barbara County shall not be liable for any errors, omissions, or damages that result from inappropriate use of this document. No level of accuracy is claimed for the boundary lines shown hereon and lines should not be used to obtain coordinate values, bearings or distances.

Survey Division
Public Works Department
123 East Anapamu Street Suite 1
Santa Barbara CA 93101-2059
(805) 568-3000
<http://www.countyofsb.org/pwd/>

Compiled in April 2018.



Group	Project	Funding	Estimated Monument Count
4A	1E33	FEMA	0



**18STM1 Project Areas
GROUP 4B:**

1E12

Montecito, Santa Barbara County, California

Legend

MonumentsEstimated_InDebrisFlow

- FEMA
- ProjectAreaGroups
- Bridges
- FC_Basins
- sb-reach_Creeks_Named
- sb-reach_Creeks_UnNamed
- Highways
- Freeways
- 18STM1 Funding Sources**
- FEMA
- County Maintained Roads
- SBC_Centerlines_20170405
- Cities
- Parcels_Layer
- sections
- TownshipAndLandGrantIndex
- Thomas Debris Field
- DeclaredDisasterZone

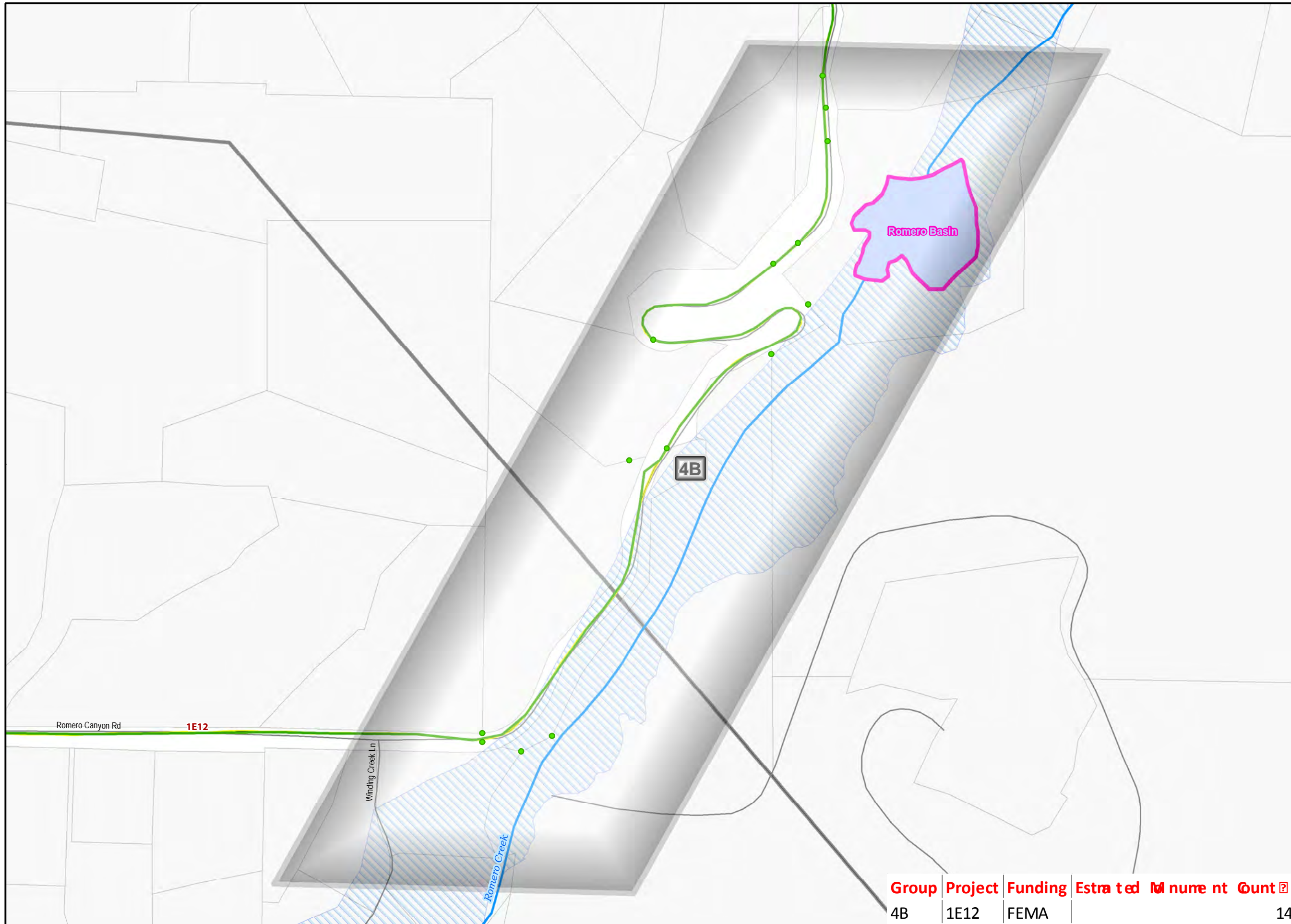


Coordinate System: State Plane California Zone V NAD 1983

This map is for reference only. Although every effort has been made to ensure the accuracy of information, errors and conditions originating from physical sources used to develop the database may be reflected on this map. Santa Barbara County shall not be liable for any errors, omissions, or damages that result from inappropriate use of this document. No level of accuracy is claimed for the boundary lines shown hereon and lines should not be used to obtain coordinate values, bearings or distances.

Survey Division
Public Works Department
123 East Anapamu Street Suite 1
Santa Barbara CA 93101-2059
(805) 568-3000
<http://www.countyofsb.org/pwd/>

Compiled in April 2018.



Group	Project	Funding	Estimated	Monument	Count
4B	1E12	FEMA			14



**18STM1 Project Areas
GROUP 5:**

1E06, 1E07, 1E34, 1E37

Montecito, Santa Barbara County, California

- Legend
- MonumentsEstimated_InDebrisFlow
 - FEMA
 - ProjectAreaGroups
 - Bridges
 - FC_Basins
 - sb-reach_Creeks_Named
 - sb-reach_Creeks_UnNamed
 - Highways
 - Freeways
 - 18STM1 Funding Sources
 - FEMA
 - County Maintained Roads
 - SBC_Centerlines_20170405
 - Cities
 - Parcels_Layer
 - sections
 - TownshipAndLandGrantIndex
 - Thomas Debris Field
 - DeclaredDisasterZone



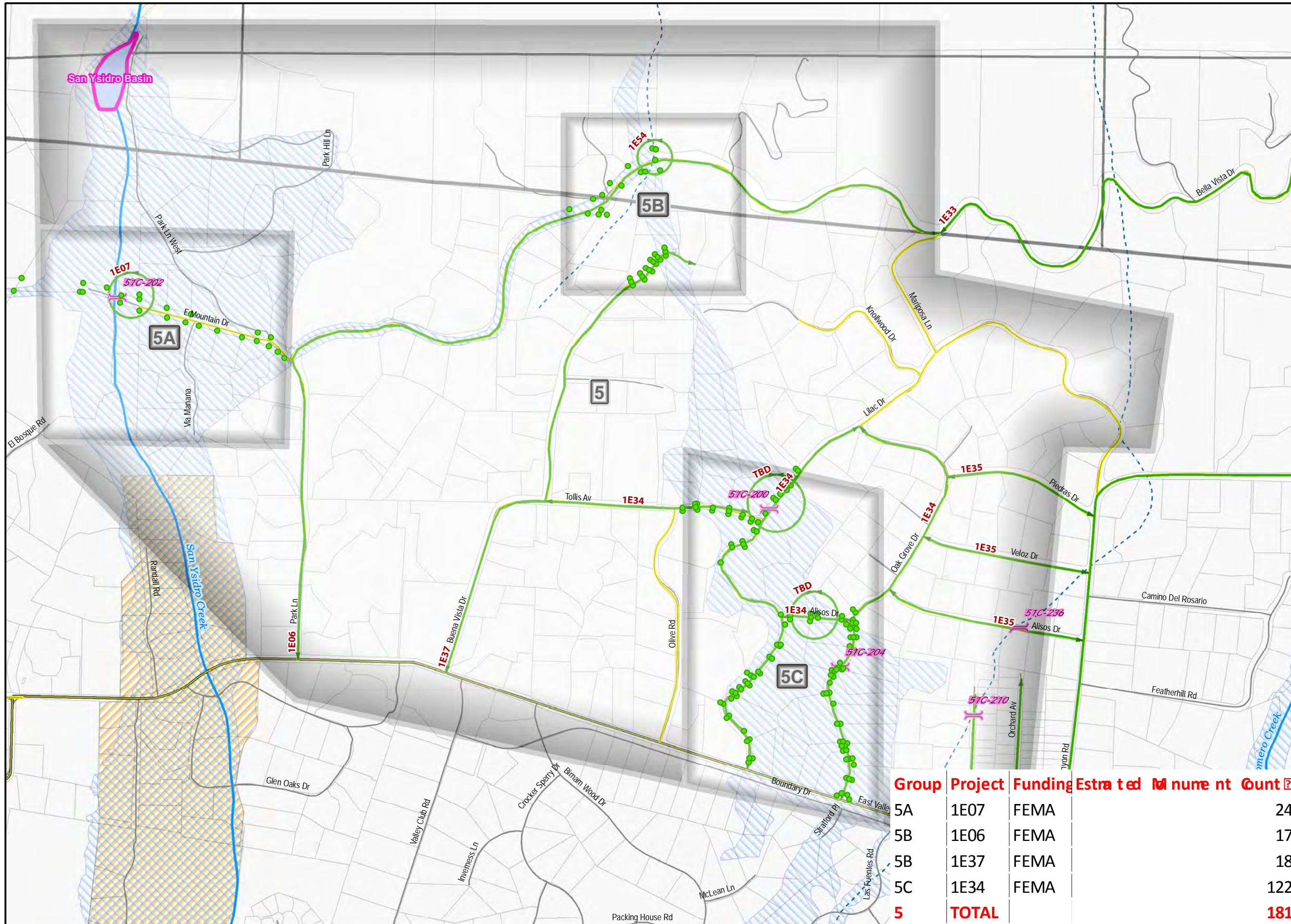
470 235 Feet 0 470

Coordinate System: State Plane California Zone V NAD 1983

This map is for reference only. Although every effort has been made to ensure the accuracy of information, errors and conditions originating from physical sources used to develop the database may be reflected on this map. Santa Barbara County shall not be liable for any errors, omissions, or damages that result from inappropriate use of this document. No level of accuracy is claimed for the boundary lines shown hereon and lines should not be used to obtain coordinate values, bearings or distances.

Survey Division
Public Works Department
123 East Anapamu Street Suite 1
Santa Barbara CA 93101-2059
(805) 568-3000
<http://www.countyofsb.org/pwd/>

Compiled in April 2018.



Group	Project	Funding	Estimated Monument Count
5A	1E07	FEMA	24
5B	1E06	FEMA	17
5B	1E37	FEMA	18
5C	1E34	FEMA	122
5	TOTAL		181



**18STM1 Project Areas
GROUP 5A:**

1E07

Montecito, Santa Barbara County, California

Legend

MonumentsEstimated_InDebrisFlow

- FEMA
- ProjectAreaGroups
- Bridges
- FC_Basins
- sb-reach_Creeks_Named
- sb-reach_Creeks_UnNamed
- =Highways
- =Freeways
- 18STM1 Funding Sources**
- FEMA
- County Maintained Roads
- SBC_Centerlines_20170405
- Cities
- Parcels_Layer
- Sections
- TownshipAndLandGrantIndex
- Thomas Debris Field
- DeclaredDisasterZone

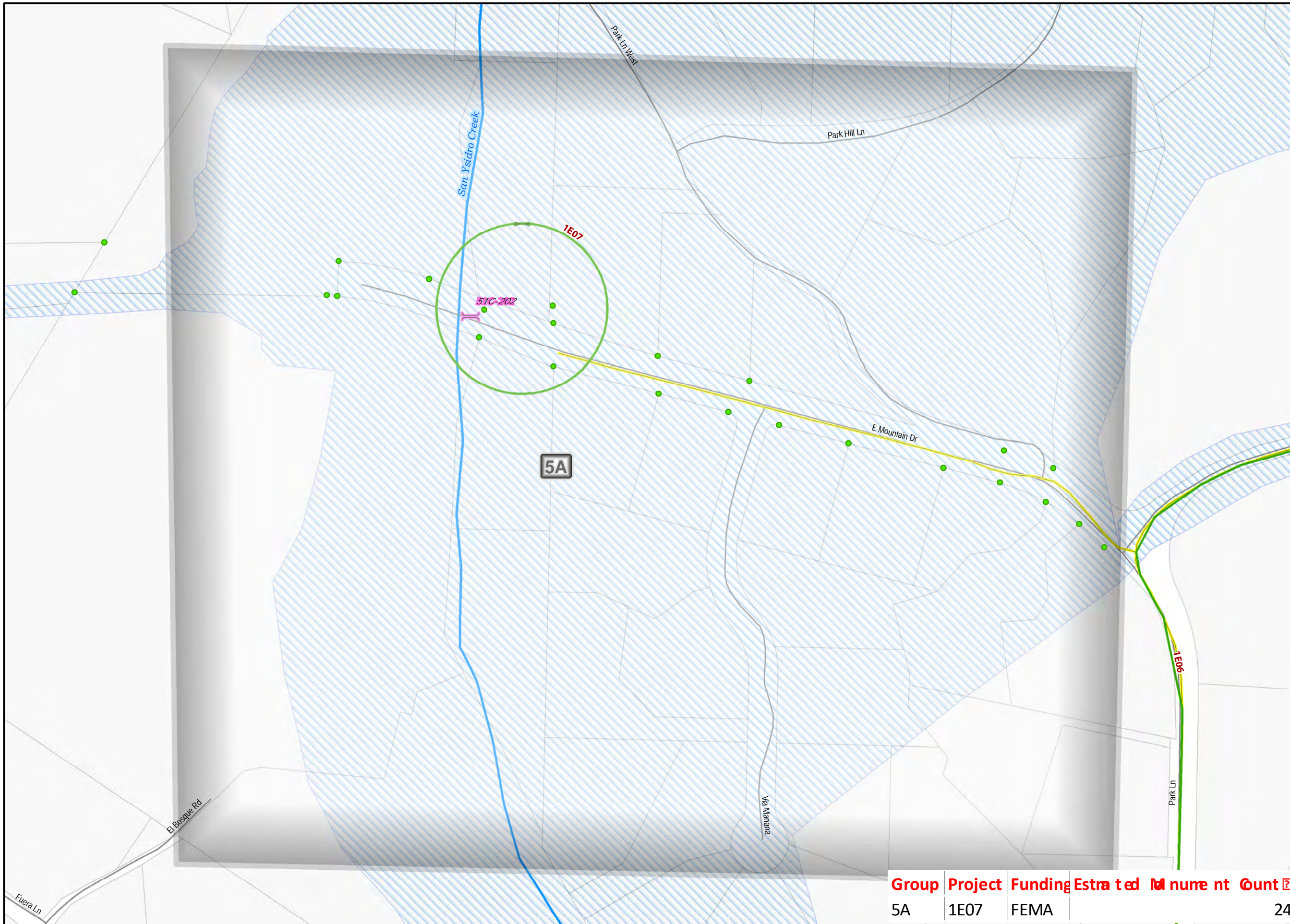


Coordinate System: State Plane California Zone V NAD 1983

This map is for reference only. Although every effort has been made to ensure the accuracy of information, errors and conditions originating from physical sources used to develop the database may be reflected on this map. Santa Barbara County shall not be liable for any errors, omissions, or damages that result from inappropriate use of this document. No level of accuracy is claimed for the boundary lines shown hereon and lines should not be used to obtain coordinate values, bearings or distances.

Survey Division
Public Works Department
123 East Anapamu Street Suite 1
Santa Barbara CA 93101-2059
(805) 568-3000
<http://www.countyofsb.org/pwd/>

Compiled in April 2018.



Group	Project	Funding	Estimated	Monument	Count
5A	1E07	FEMA			24



**18STM1 Project Areas
GROUP 5B:**

1E06,1E37,1E54

Montecito, Santa Barbara County, California

Legend

MonumentsEstimated_InDebrisFlow

- FEMA
- ProjectAreaGroups
- Bridges
- FC_Basins
- sb-reach_Creeks_Named
- sb-reach_Creeks_UnNamed
- Highways
- Freeways
- 18STM1 Funding Sources**
- FEMA
- County Maintained Roads
- SBC_Centerlines_20170405
- Cities
- Parcels_Layer
- sections
- TownshipAndLandGrantIndex
- Thomas Debris Field
- DeclaredDisasterZone

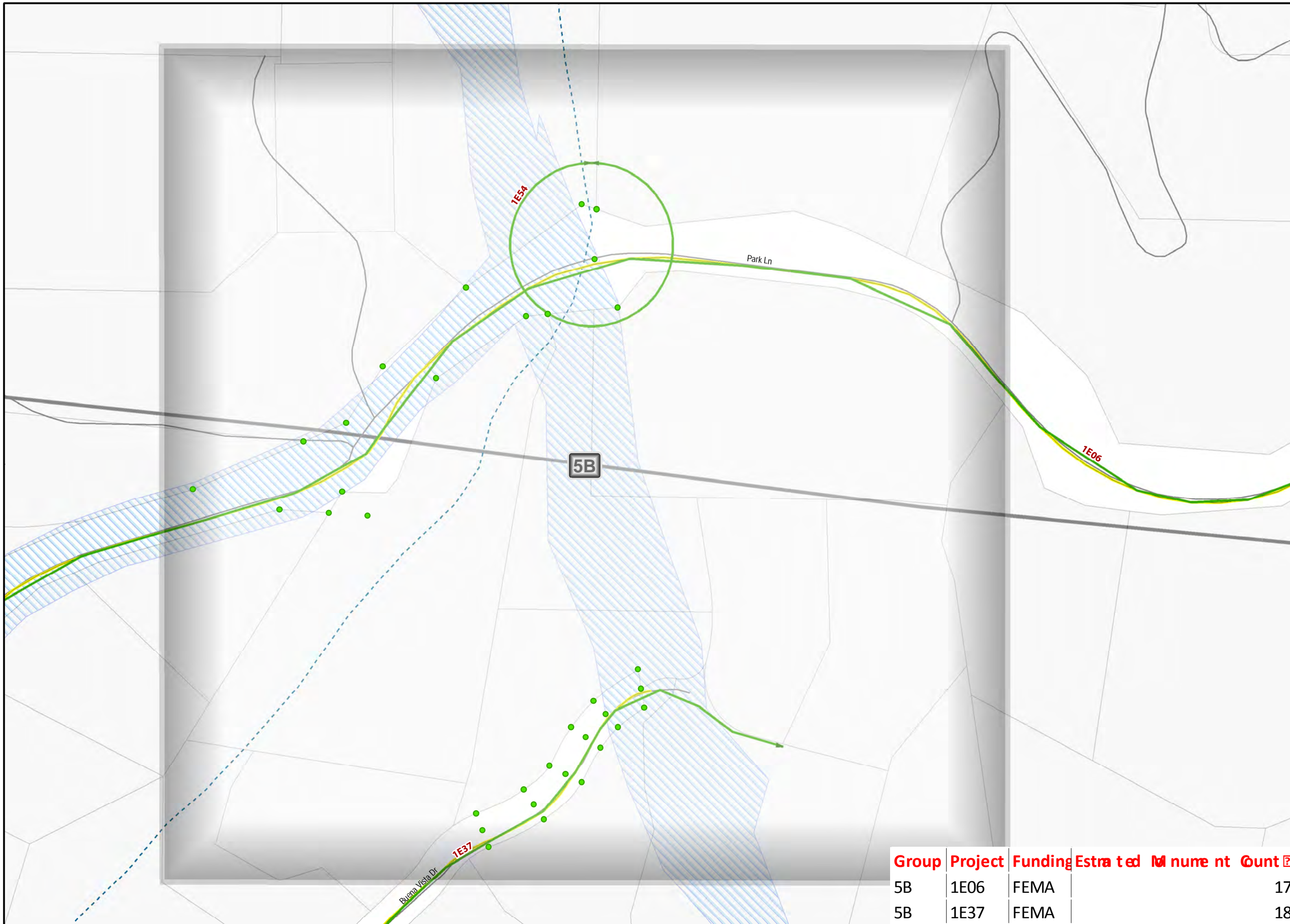


Coordinate System: State Plane California Zone V NAD 1983

This map is for reference only. Although every effort has been made to ensure the accuracy of information, errors and conditions originating from physical sources used to develop the database may be reflected on this map. Santa Barbara County shall not be liable for any errors, omissions, or damages that result from inappropriate use of this document. No level of accuracy is claimed for the boundary lines shown hereon and lines should not be used to obtain coordinate values, bearings or distances.

Survey Division
Public Works Department
123 East Anapamu Street Suite 1
Santa Barbara CA 93101-2059
(805) 568-3000
<http://www.countyofsb.org/pwd/>

Compiled in April 2018.



Group	Project	Funding	Estimated Monument Count
5B	1E06	FEMA	17
5B	1E37	FEMA	18



**18STM1 Project Areas
GROUP 5C:**

1E34

Montecito, Santa Barbara County, California

- Legend
- MonumentsEstimated_InDebrisFlow
 - FEMA
 - ProjectAreaGroups
 - Bridges
 - FC_Basins
 - sb-reach_Creeks_Named
 - sb-reach_Creeks_UnNamed
 - Highways
 - Freeways
 - 18STM1 Funding Sources
 - FEMA
 - County Maintained Roads
 - SBC_Centerlines_20170405
 - Cities
 - Parcels_Layer
 - Sections
 - TownshipAndLandGrantIndex
 - Thomas Debris Field
 - DeclaredDisasterZone

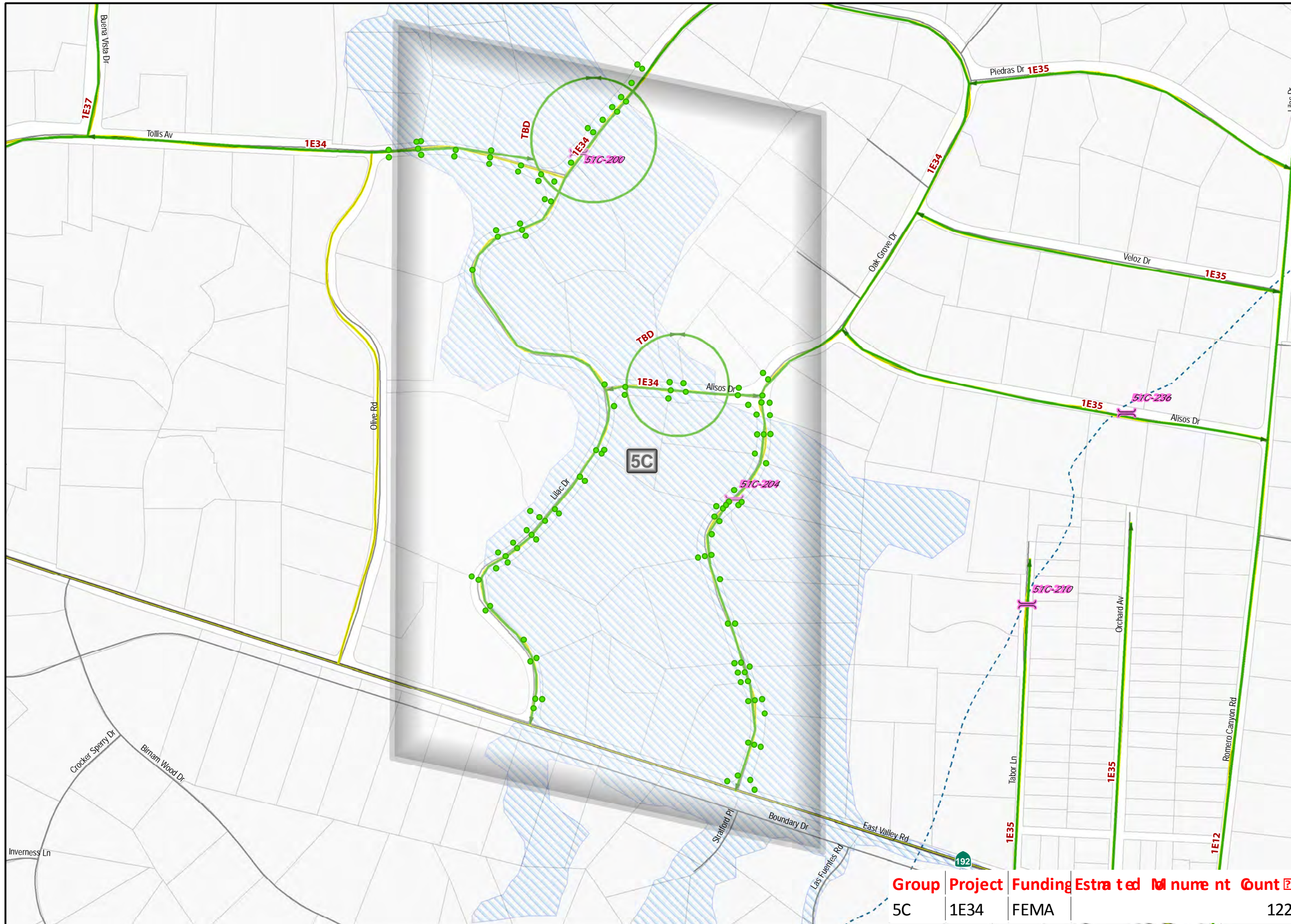


Coordinate System: State Plane California Zone V NAD 1983

This map is for reference only. Although every effort has been made to ensure the accuracy of information, errors and conditions originating from physical sources used to develop the database may be reflected on this map. Santa Barbara County shall not be liable for any errors, omissions, or damages that result from inappropriate use of this document. No level of accuracy is claimed for the boundary lines shown hereon and lines should not be used to obtain coordinate values, bearings or distances.

Survey Division
Public Works Department
123 East Anapamu Street Suite 1
Santa Barbara CA 93101-2059
(805) 568-3000
<http://www.countyofsb.org/pwd/>

Compiled in April 2018.



Group	Project	Funding	Estimated	Monument	Count
5C	1E34	FEMA			122



**18STM1 Project Areas
GROUP 6:**

1E31, 1E32

Montecito, Santa Barbara County, California

- Legend
- MonumentsEstimated_InDebrisFlow
 - FEMA
 - ProjectAreaGroups
 - Bridges
 - FC_Basins
 - sb-reach_Creeks_Named
 - sb-reach_Creeks_UnNamed
 - Highways
 - Freeways
 - 18STM1 Funding Sources
 - FEMA
 - County Maintained Roads
 - SBC_Centerlines_20170405
 - Cities
 - Parcels_Layer
 - sections
 - TownshipAndLandGrantIndex
 - Thomas Debris Field
 - DeclaredDisasterZone



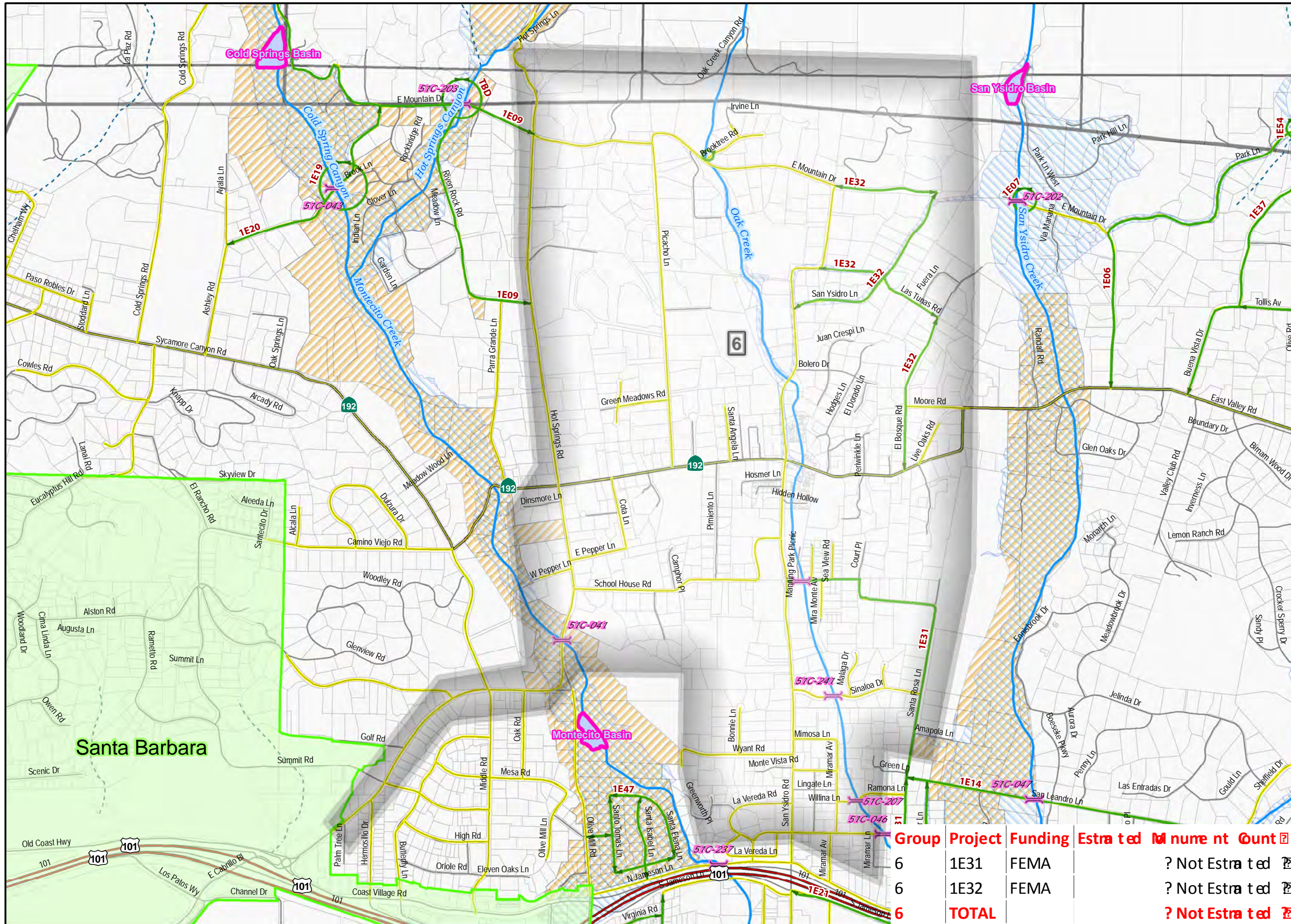
900 450 Feet 0 900

Coordinate System: State Plane California Zone V NAD 1983

This map is for reference only. Although every effort has been made to ensure the accuracy of information, errors and conditions originating from physical sources used to develop the database may be reflected on this map. Santa Barbara County shall not be liable for any errors, omissions, or damages that result from inappropriate use of this document. No level of accuracy is claimed for the boundary lines shown hereon and lines should not be used to obtain coordinate values, bearings or distances.

Survey Division
Public Works Department
123 East Anapamu Street Suite 1
Santa Barbara CA 93101-2059
(805) 568-3000
<http://www.countyofsb.org/pwd/>

Compiled in April 2018.



Group	Project	Funding	Estimated	Monument	Count
6	1E31	FEMA	?	Not Estimated	2
6	1E32	FEMA	?	Not Estimated	2
6	TOTAL		?	Not Estimated	2



**18STM1 Project Areas
GROUP 7:**

1E02, 1E09, 1E19, 1E20

Montecito, Santa Barbara County, California

Legend

MonumentsEstimated_InDebrisFlow

18STM1 Funding Sources

- FEMA
- ProjectAreaGroups
- Bridges
- FC_Basins
- sb-reach_Creeks_Named
- sb-reach_Creeks_UnNamed
- Highways
- Freeways
- 18STM1 Funding Sources**
- FEMA
- County Maintained Roads
- SBC_Centerlines_20170405
- Cities
- Parcels_Layer
- sections
- TownshipAndLandGrantIndex
- Thomas Debris Field
- DeclaredDisasterZone

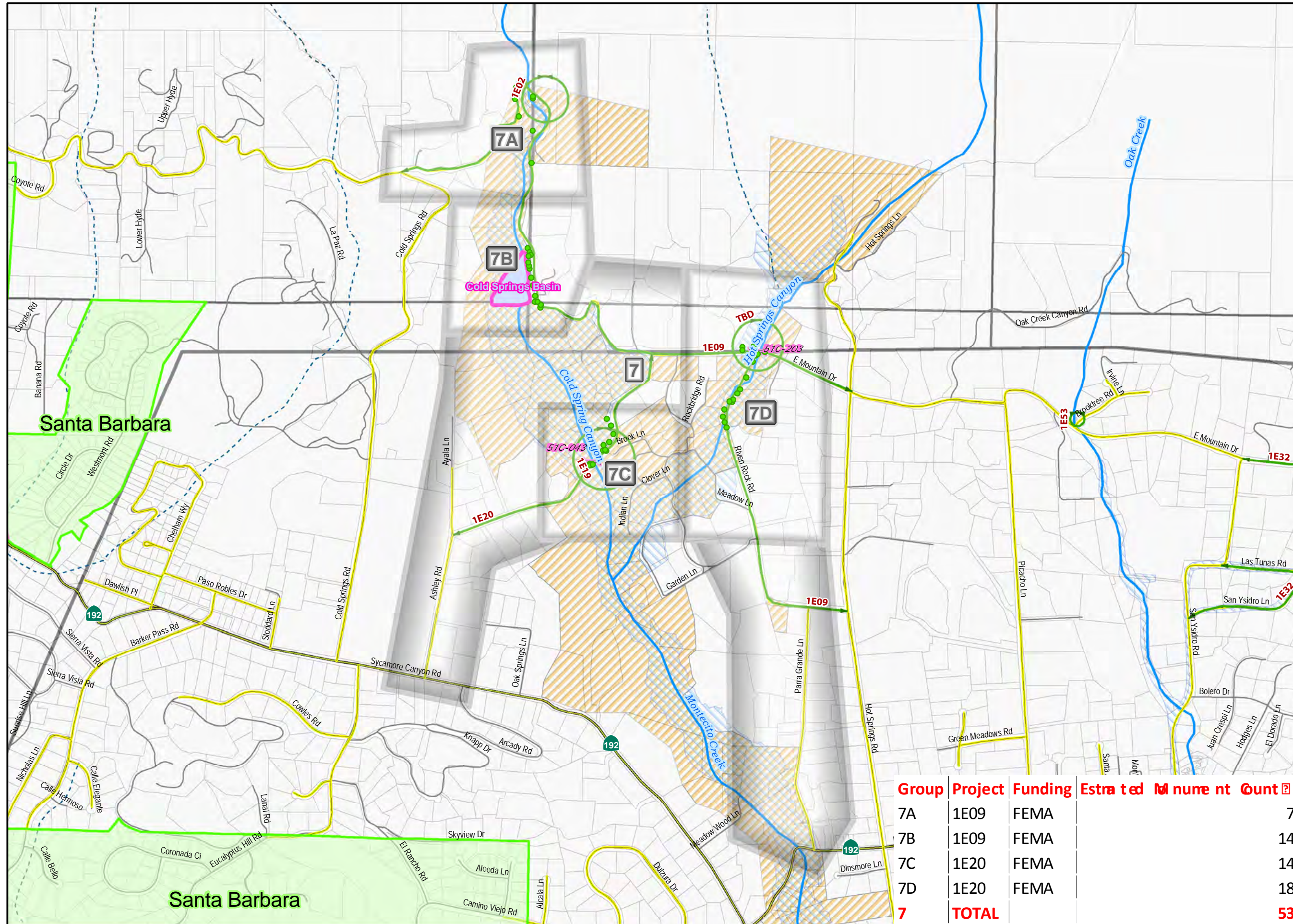


Coordinate System: State Plane California Zone V NAD 1983

This map is for reference only. Although every effort has been made to ensure the accuracy of information, errors and conditions originating from physical sources used to develop the database may be reflected on this map. Santa Barbara County shall not be liable for any errors, omissions, or damages that result from inappropriate use of this document. No level of accuracy is claimed for the boundary lines shown hereon and lines should not be used to obtain coordinate values, bearings or distances.

Survey Division
Public Works Department
123 East Anapamu Street Suite 1
Santa Barbara CA 93101-2059
(805) 568-3000
<http://www.countyofsb.org/pwd/>

Compiled in April 2018.



Group	Project	Funding	Estimated Monument Count
7A	1E09	FEMA	7
7B	1E09	FEMA	14
7C	1E20	FEMA	14
7D	1E20	FEMA	18
7	TOTAL		53



**18STM1 Project Areas
GROUP 7A:**

1E09

Montecito, Santa Barbara County, California

Legend

MonumentsEstimated_InDebrisFlow

18STM1 Funding Sources

- FEMA
- ProjectAreaGroups
- Bridges
- FC_Basins
- sb-reach_Creeks_Named
- sb-reach_Creeks_UnNamed
- Highways
- Freeways
- 18STM1 Funding Sources**
- FEMA
- County Maintained Roads
- SBC_Centerlines_20170405
- Cities
- Parcels_Layer
- sections
- TownshipAndLandGrantIndex
- Thomas Debris Field
- DeclaredDisasterZone



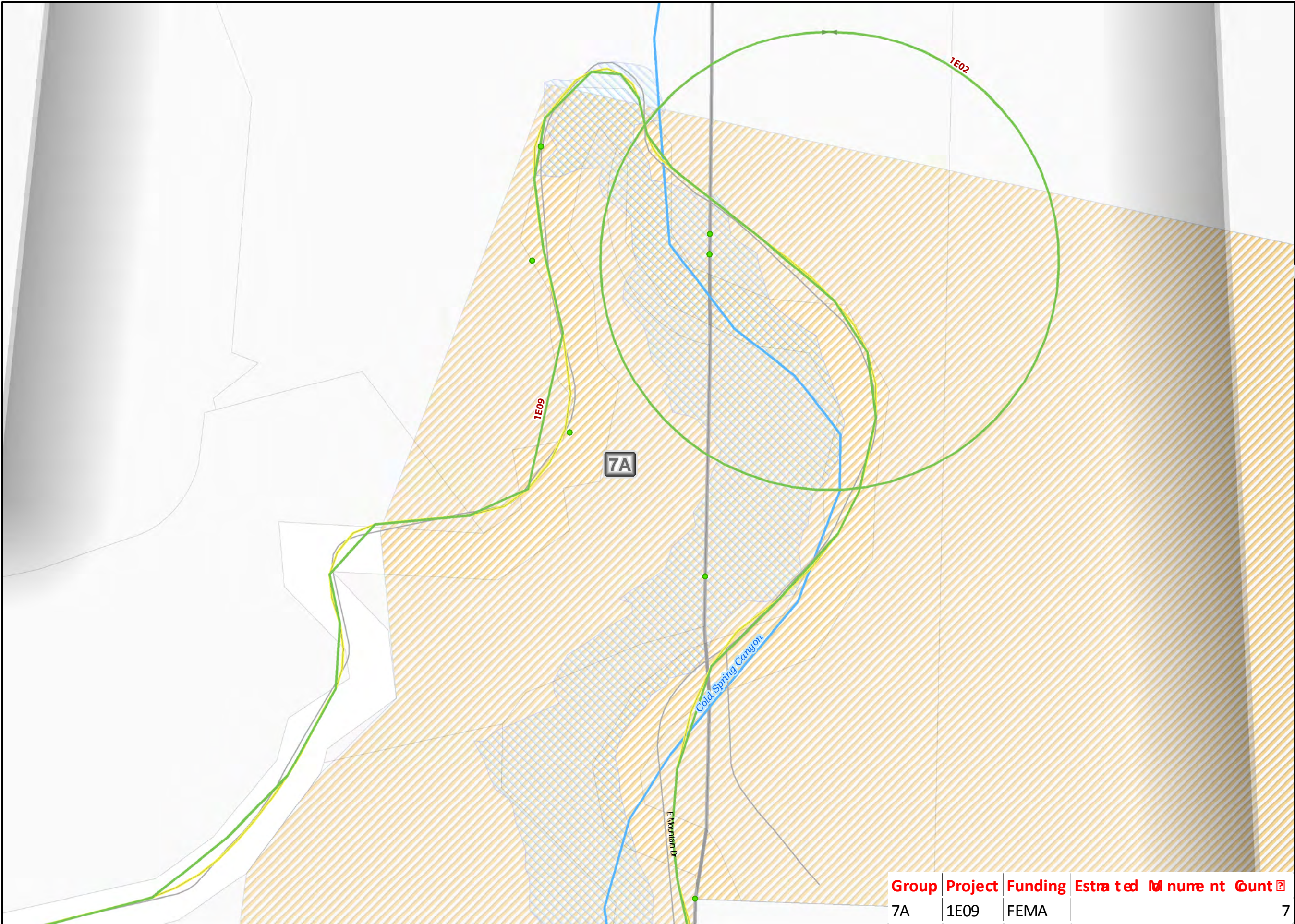
Coordinate System: State Plane California Zone V NAD 1983

This map is for reference only. Although every effort has been made to ensure the accuracy of information, errors and conditions originating from physical sources used to develop the database may be reflected on this map. Santa Barbara County shall not be liable for any errors, omissions, or damages that result from inappropriate use of this document. No level of accuracy is claimed for the boundary lines shown hereon and lines should not be used to obtain coordinate values, bearings or distances.

Survey Division
Public Works Department
123 East Anapamu Street Suite 1
Santa Barbara CA 93101-2059
(805) 568-3000
<http://www.countyofsb.org/pwd/>

Compiled in April 2018.

Group	Project	Funding	Estimated	Monument	Count
7A	1E09	FEMA			7





**18STM1 Project Areas
GROUP 7B:**

1E09

Montecito, Santa Barbara County, California

Legend

MonumentsEstimated_InDebrisFlow

18STM1 Funding Sources

- FEMA
- ProjectAreaGroups
- Bridges
- FC_Basins
- sb-reach_Creeks_Named
- sb-reach_Creeks_UnNamed
- Highways
- Freeways
- 18STM1 Funding Sources**
- FEMA
- County Maintained Roads
- SBC_Centerlines_20170405
- Cities
- Parcels_Layer
- sections
- TownshipAndLandGrantIndex
- Thomas Debris Field
- DeclaredDisasterZone

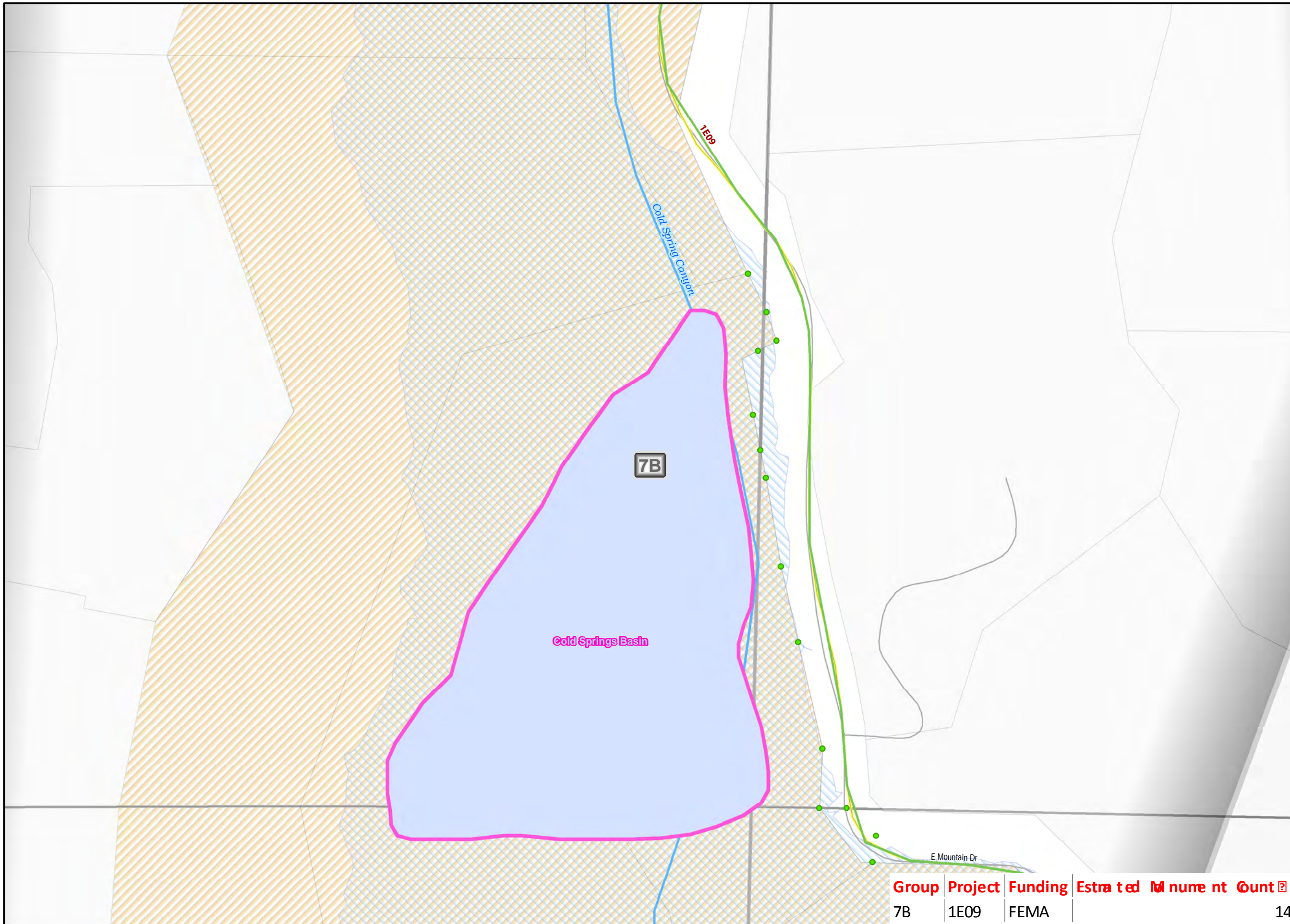


Coordinate System: State Plane California Zone V NAD 1983

This map is for reference only. Although every effort has been made to ensure the accuracy of information, errors and conditions originating from physical sources used to develop the database may be reflected on this map. Santa Barbara County shall not be liable for any errors, omissions, or damages that result from inappropriate use of this document. No level of accuracy is claimed for the boundary lines shown hereon and lines should not be used to obtain coordinate values, bearings or distances.

Survey Division
Public Works Department
123 East Anapamu Street Suite 1
Santa Barbara CA 93101-2059
(805) 568-3000
<http://www.countyofsb.org/pwd/>

Compiled in April 2018.



Group	Project	Funding	Estimated	Monument	Count
7B	1E09	FEMA			14



**18STM1 Project Areas
GROUP 7C:**

1E20

Montecito, Santa Barbara County, California

Legend

**MonumentsEstimated_InDebrisFlow
18STM1 Funding Sources**

- FEMA
- ProjectAreaGroups
- Bridges
- FC_Basins
- sb-reach_Creeks_Named
- sb-reach_Creeks_UnNamed
- Highways
- Freeways
- 18STM1 Funding Sources**
- FEMA
- County Maintained Roads
- SBC_Centerlines_20170405
- Cities
- Parcels_Layer
- sections
- TownshipAndLandGrantIndex
- Thomas Debris Field
- DeclaredDisasterZone

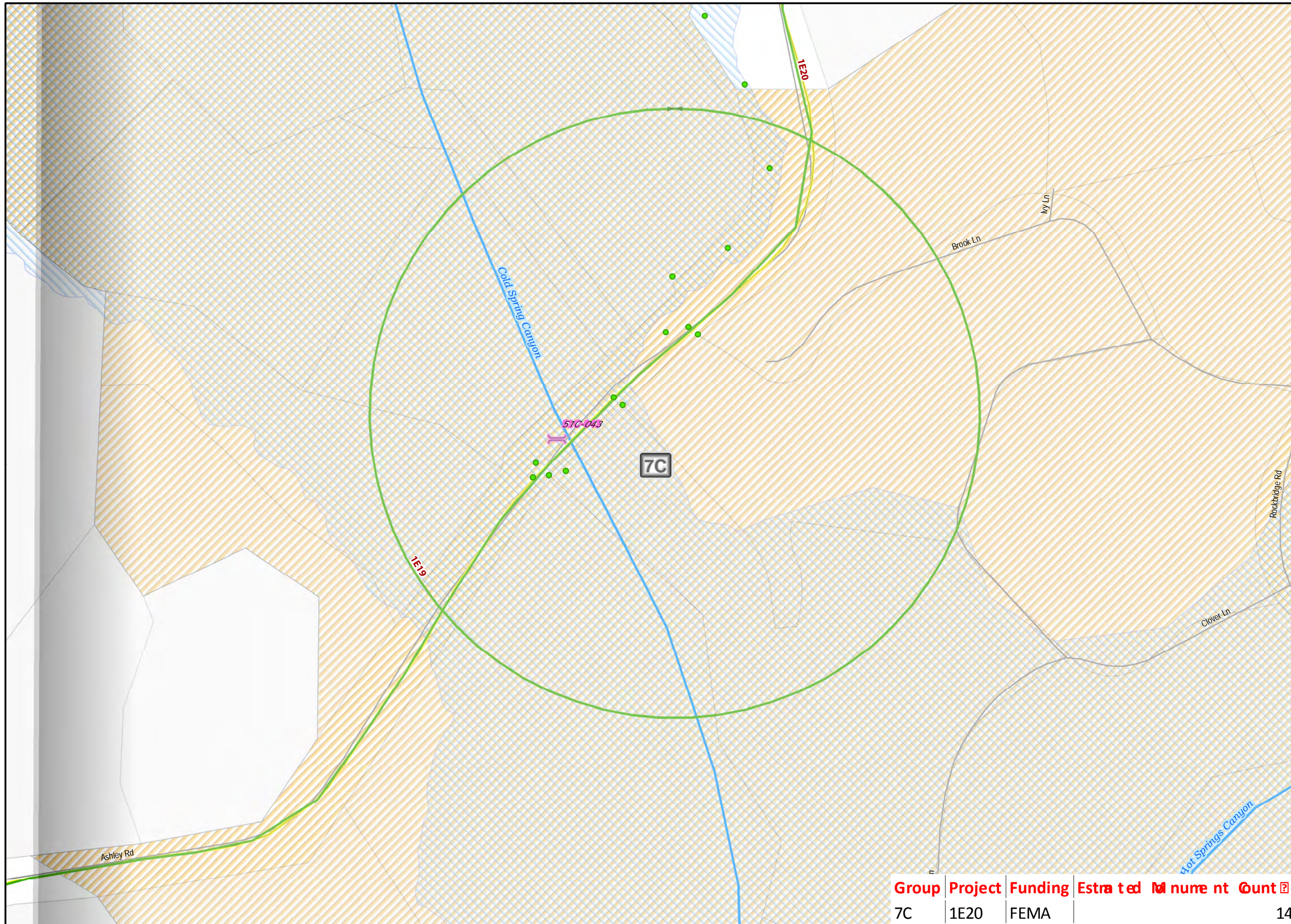


Coordinate System: State Plane California Zone V NAD 1983

This map is for reference only. Although every effort has been made to ensure the accuracy of information, errors and conditions originating from physical sources used to develop the database may be reflected on this map. Santa Barbara County shall not be liable for any errors, omissions, or damages that result from inappropriate use of this document. No level of accuracy is claimed for the boundary lines shown hereon and lines should not be used to obtain coordinate values, bearings or distances.

Survey Division
Public Works Department
123 East Anapamu Street Suite 1
Santa Barbara CA 93101-2059
(805) 568-3000
<http://www.countyofsb.org/pwd/>

Compiled in April 2018.



Group	Project	Funding	Estimated	Monument	Count
7C	1E20	FEMA			14



18STM1 Project Areas GROUP 7D:

1E09

Montecito, Santa Barbara County, California

Legend

MonumentsEstimated_InDebrisFlow 18STM1 Funding Sources

- FEMA
- ProjectAreaGroups
- Bridges
- FC_Basins
- sb-reach_Creeks_Named
- sb-reach_Creeks_UnNamed
- Highways
- Freeways
- 18STM1 Funding Sources**
- FEMA
- County Maintained Roads
- SBC_Centerlines_20170405
- Cities
- Parcels_Layer
- sections
- TownshipAndLandGrantIndex
- Thomas Debris Field
- DeclaredDisasterZone

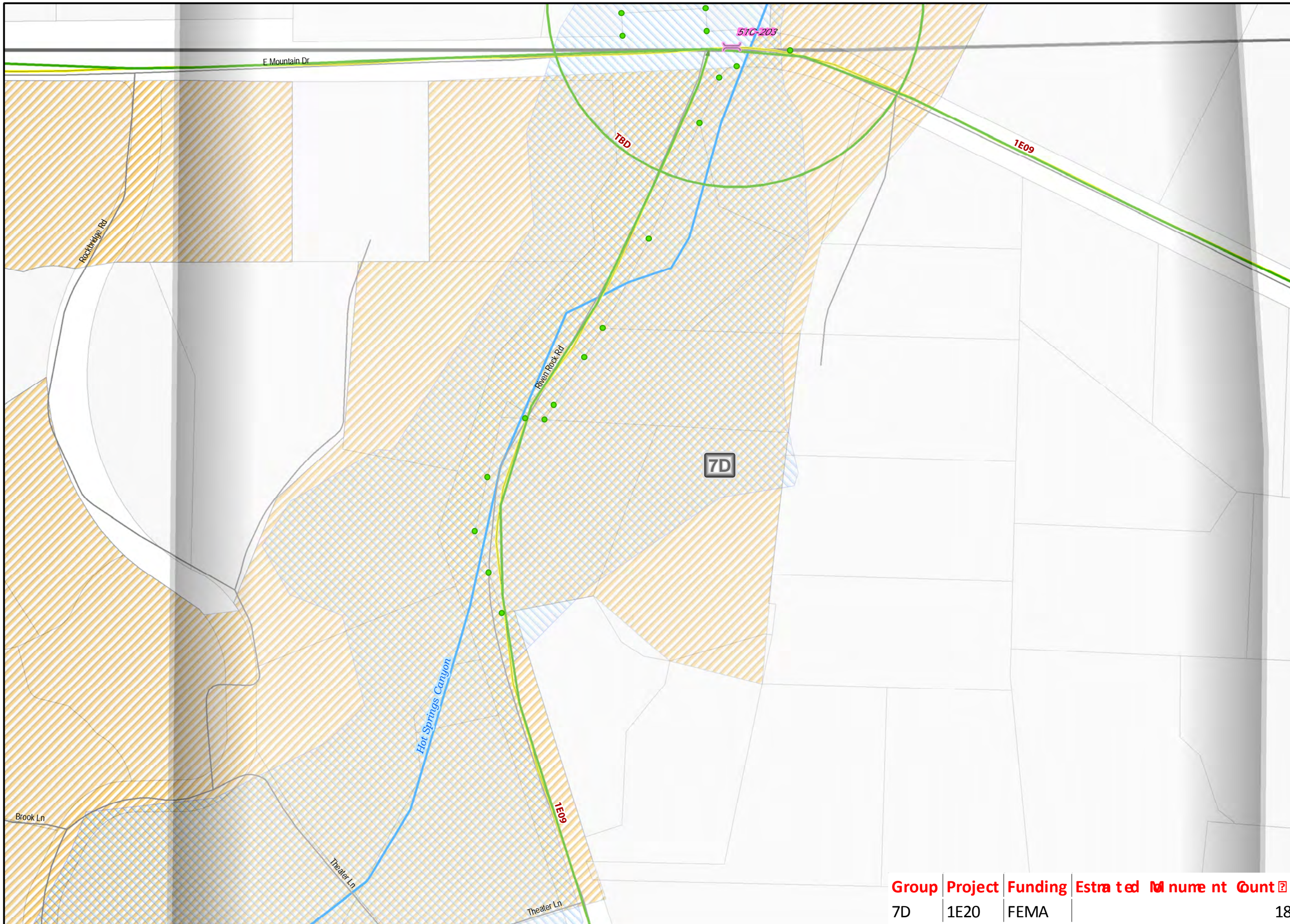


Coordinate System: State Plane California Zone V NAD 1983

This map is for reference only. Although every effort has been made to ensure the accuracy of information, errors and conditions originating from physical sources used to develop the database may be reflected on this map. Santa Barbara County shall not be liable for any errors, omissions, or damages that result from inappropriate use of this document. No level of accuracy is claimed for the boundary lines shown hereon and lines should not be used to obtain coordinate values, bearings or distances.

Survey Division
Public Works Department
123 East Anapamu Street Suite 1
Santa Barbara CA 93101-2059
(805) 568-3000
<http://www.countyofsb.org/pwd/>

Compiled in April 2018.



Group	Project	Funding	Estimated	Monument	Count
7D	1E20	FEMA			18

Group	Project	Funding	Estimated Monument Count
1A	1E23	FEMA	109

Group	Project	Funding	Estimated Monument Count
2	1E47	FEMA	54

Group	Project	Funding	Estimated Monument Count
3A	1E14	FEMA	36

Group	Project	Funding	Estimated Monument Count
4A	1E33	FEMA	0
4B	1E12	FEMA	14

4	SUBTOTAL		14
----------	-----------------	--	-----------

Group	Project	Funding	Estimated Monument Count
5A	1E07	FEMA	24
5B	1E06	FEMA	17
5B	1E37	FEMA	18
5C	1E34	FEMA	122

5	SUBTOTAL		181
----------	-----------------	--	------------

Group	Project	Funding	Estimated Monument Count
6A	1E32	FEMA	? Not Estimated ?
6B	1E31	FEMA	? Not Estimated ?

Group	Project	Funding	Estimated Monument Count
7A	1E09	FEMA	7
7B	1E09	FEMA	14
7C	1E20	FEMA	14
7D	1E20	FEMA	18

7	SUBTOTAL		53
----------	-----------------	--	-----------

1 - 7	GRAND TOTAL		447
--------------	--------------------	--	------------