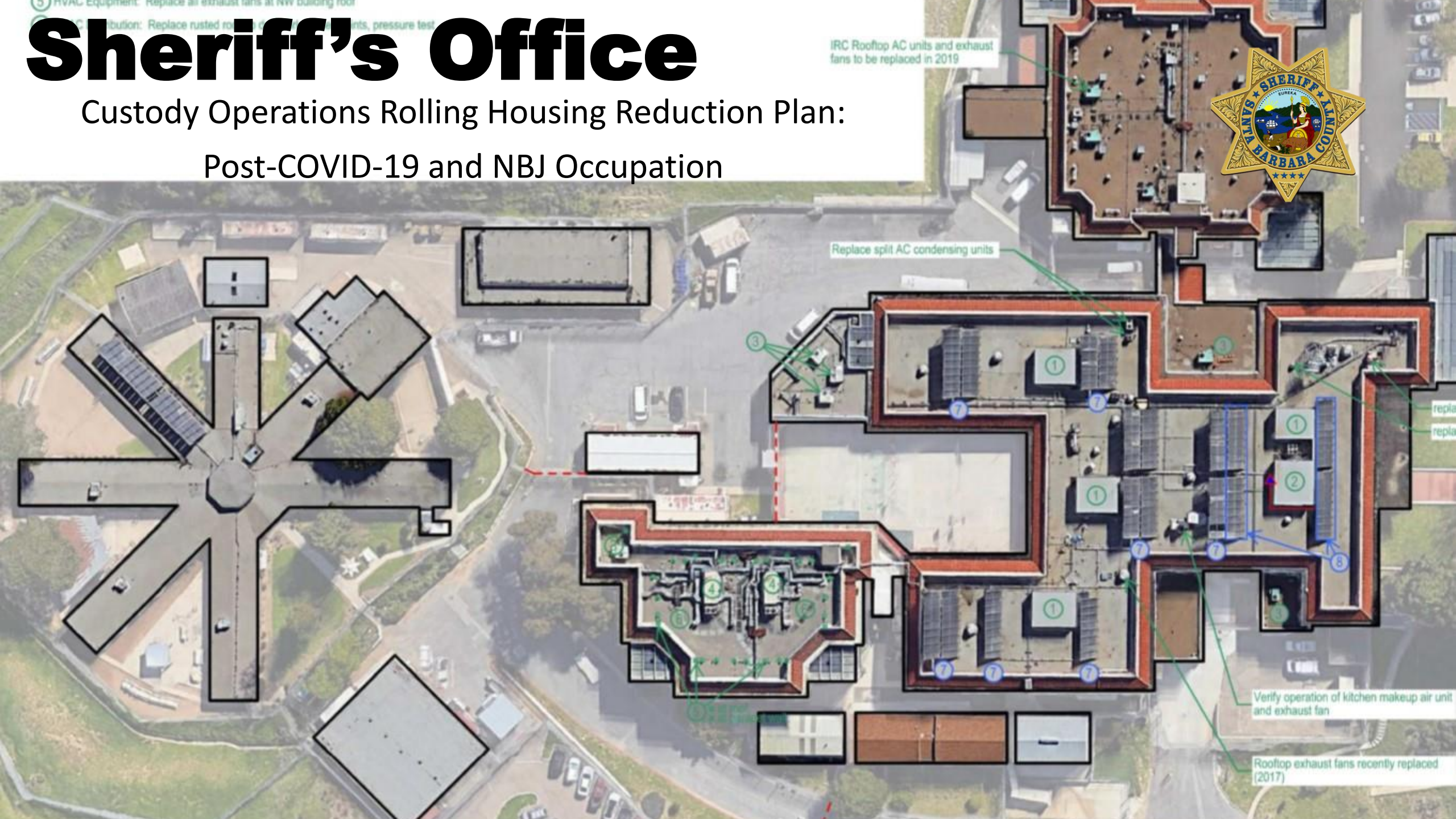
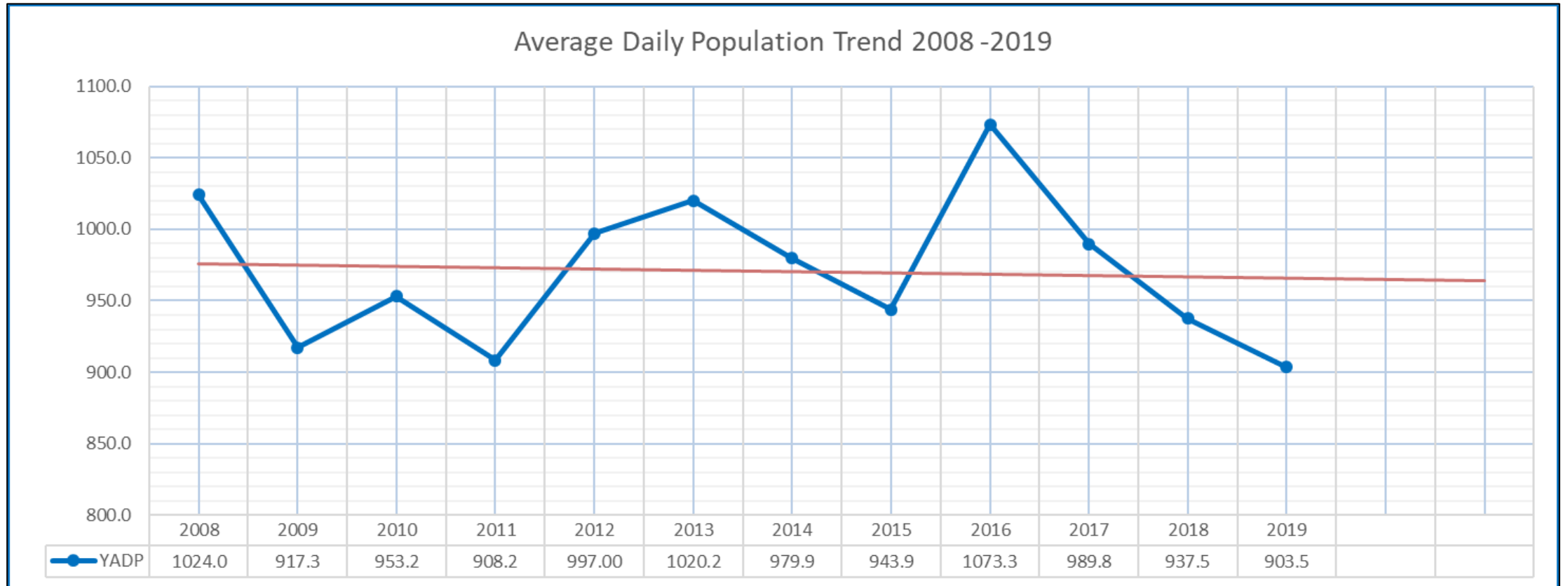


Sheriff's Office

Custody Operations Rolling Housing Reduction Plan:
Post-COVID-19 and NBJ Occupation



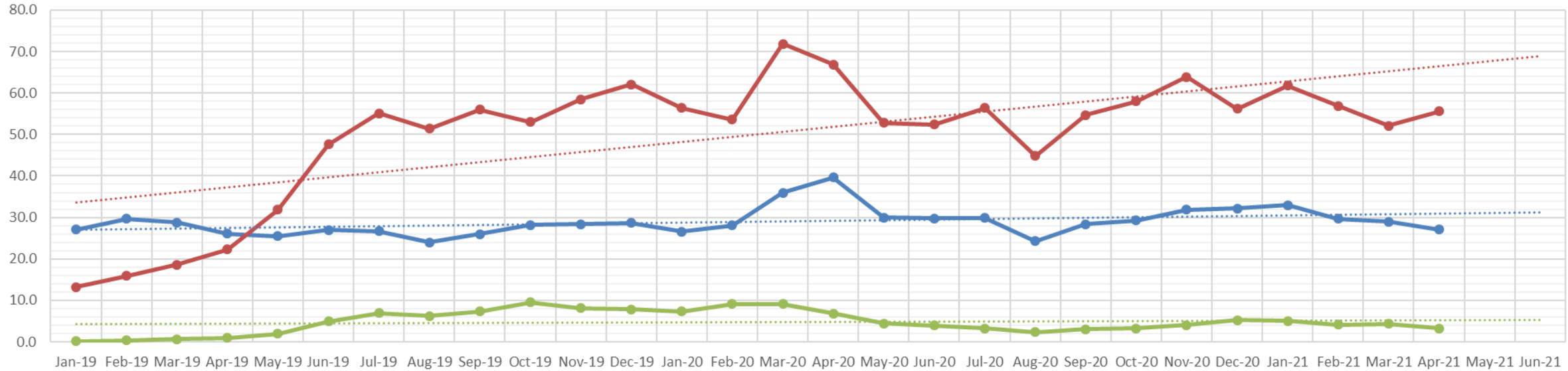
Jail Average Daily Population on Downward Trend Since 2016



Average Length of Stay Trending Upward

Causes Believed to Include Higher Percentage of Felony Inmates, Court Closures, and COVID Impact on Jail To Prison Transfers

Average Length of Stay Jan 2019 through Apr 2021 With Trend



	Jan-19	Feb-19	Mar-19	Apr-19	May-19	Jun-19	Jul-19	Aug-19	Sep-19	Oct-19	Nov-19	Dec-19	Jan-20	Feb-20	Mar-20	Apr-20	May-20	Jun-20	Jul-20	Aug-20	Sep-20	Oct-20	Nov-20	Dec-20	Jan-21	Feb-21	Mar-21	Apr-21
ALL INMATES	27.1	29.7	28.8	26.0	25.5	26.9	26.6	24.0	26.0	28.2	28.4	28.6	26.6	28.1	35.9	39.6	30.0	29.8	29.9	24.3	28.4	29.2	31.9	32.2	33.0	29.7	29.0	27.1
FELONY	13.2	15.9	18.6	22.3	31.8	47.7	55.1	51.4	55.9	53.0	58.5	62.1	56.3	53.6	71.9	66.8	52.8	52.4	56.4	44.9	54.7	58.0	63.9	56.2	61.8	56.9	52.1	55.6
MISDEMEANOR	0.1	0.4	0.6	1.0	1.9	5.0	6.9	6.3	7.3	9.6	8.1	7.8	7.3	9.1	9.2	6.8	4.5	4.0	3.3	2.4	3.0	3.2	4.0	5.2	5.0	4.1	4.3	3.2

What Is Classification?

- Classification is a process where a trained Senior Deputy objectively assesses the proper security level housing of an arrestee.
- The Deputy bases their housing level decision using an Objective Assessment Scale that gives a numerical value to factors such as:
 - Sex/Gender Identity, Age, Criminal Sophistication, Seriousness of Crime, Physical or Mental Health needs, Assaultive/non-assaultive behavior, Risk of being sexually abused or sexually harassed.
- The numerical value determines the inmates Security Housing Level: Minimum/Medium, Maximum and Restrictive Housing.

What Is Classification?

- The deputy will then further clarify which level of security housing is appropriate for the inmate by reviewing additional Special Management Issues.
For Example:
Protective Custody - Mental Health or Medical needs – Serious Violence Issues – Gang Affiliation – Management Issue – Suicide Risk – ADA issues.
- The goal of classification is to ensure inmates are safe during their stay and receive access to specialized services, particularly for those vulnerable populations.

Classification Housing (10 Levels)

Male Inmates

- General Population Minimum/Medium
- General Population Maximum
- Protective Custody Minimum/Medium
- Protective Custody Maximum
- Restrictive Housing

Female Inmates

- General Population Minimum/Medium
- General Population High
- Protective Custody Minimum/Medium
- Protective Custody Maximum
- Restrictive Housing

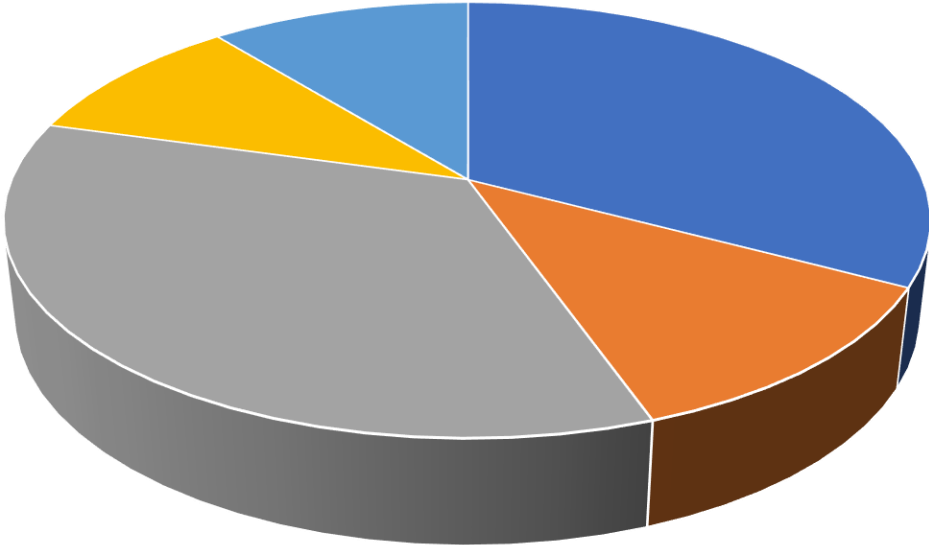
Classification Level Housing Breakdown

Classification Snapshot - May 13, 2021		
Total Population - 646	Male	Female
General Population Minimum/Medium	197	23
General Population Maximum	71	2
Protective Custody Minimum/Medium	209	8
Protective Custody Maximum	59	1
Restrictive Housing	65	11
Total	601	45

Classification Level Housing Breakdown

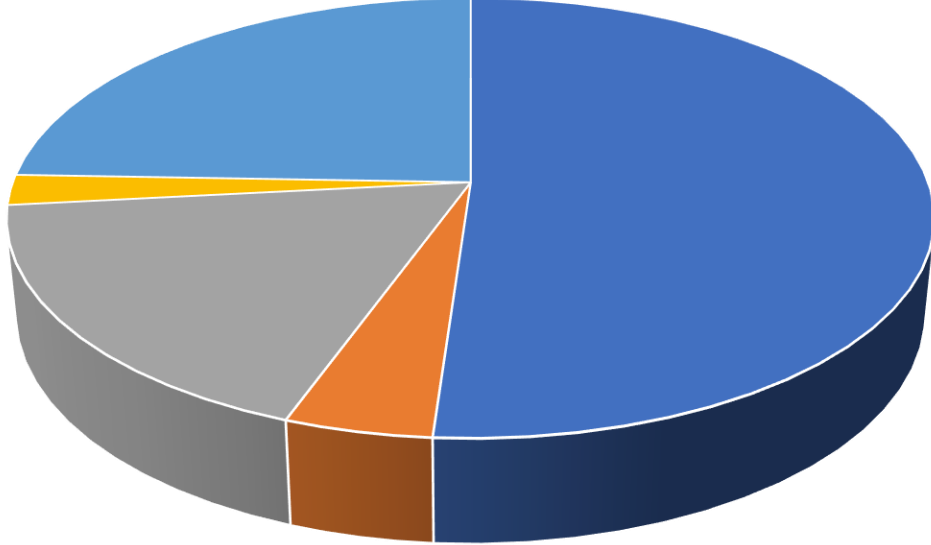
Population snapshot May 13, 2021

Males



- General Population Minimum/Medium 32%
- General Population Maximum 12%
- Protective Custody Minimum/Medium 35%
- Protective Custody Maximum 10%
- Restrictive Housing 11%

Females



- General Population minimum/Medium 51%
- General Population Maximum 4%
- Protective Custody minimum/Medium 18%
- Protective Custody Maximum 2%
- Restrictive Housing 25%

Rolling Housing Reduction Plan

System-wide Beds Required				
	Beds	-0.15	Target ADP	Trigger ADP
Phase I	1088	-163	925	879
Phase II	1056	-158	898	853
Phase III	973	-146	827	786
Phase IV	896	-134	762	724
Phase V	853	-128	725	689
Phase VI	741	-111	630	598
Phase VII	630	-95	536	509
Phase VIII	590	-89	502	476
Phase IX	547	-82	465	442
Phase X	472	-71	401	381

Rolling Housing Reduction Plan

Potential Staff Reduction/Cost Avoidance for ADP With 15% Classification Buffer (Full Capacity to 853 Beds)										
	Phase I		Phase II		Phase III		Phase IV		Phase V	
ADP/Needed Beds	Full Capacity (952+)		898/1056		827/973		762/896		725/853	
Housing Area	Rated Beds	Posts/Day	Rated Beds	Posts/Day	Rated Beds	Posts/Day	Rated Beds	Posts/Day	Rated Beds	Posts/Day
Main Jail West	152	4	152	4	152	4	152	4	152	4
Main Jail East	154	4	154	4	154	4	154	4	154	4
Main Jail South	43	2	43	2	0	0	43	2	0	0
Main Jail Basement	32	2	0	0	0	0	0	0	0	0
Northwest	75	6	75	6	75	6	75	6	75	6
Intake and Release Center	128	8	128	8	128	8	128	8	128	8
Medium Security Facility	120	6	120	6	120	6	0	0	0	0
D Barracks	40	2	40	2	0	0	0	0	0	0
SBJ Total	744	34	712	32	629	28	552	24	509	22
NBJ Total	344	20	344	20	344	20	344	20	344	20
System-wide Total	1088	54	1056	52	973	48	896	44	853	42
Staffing Delta				(2)		(6)		(10)		(12)
Total Daily Hours				(24)		(72)		(120)		(144)
Daily Overtime Avoidance				(\$1,353)		(\$4,059)		(\$6,764)		(\$8,117)

Rolling Housing Reduction Plan

Potential Staff Reduction/Cost Avoidance for ADP With 15% Classification Buffer (741 to 472 Beds)										
	Phase VI		Phase VII		Phase VIII		Phase IX		Phase X	
ADP/Needed Beds	630/741		536/630		502/590		465/547		401/472	
Housing Area	Rated Beds	Posts/Day	Rated Beds	Posts/Day	Rated Beds	Posts/Day	Rated Beds	Posts/Day	Rated Beds	Posts/Day
Main Jail West	0	0	0	0	0	0	0	0	0	0
Main Jail East	154	4	0	0	0	0	0	0	0	0
Main Jail South	0	0	43	2	43	2	0	0	0	0
Main Jail Basement	0	0	0	0	0	0	0	0	0	0
Northwest	75	6	75	6	75	6	75	6	0	0
Intake and Release Center	128	8	128	8	128	8	128	8	128	8
Medium Security Facility	0	0	0	0	0	0	0	0	0	0
D Barracks	40	2	40	2	0	0	0	0	0	0
SBJ Total	397	20	286	18	246	16	203	14	128	8
NBJ Total	344	20	344	20	344	20	344	20	344	20
System-wide Total	741	40	630	38	590	36	547	34	472	28
Staffing Delta		(14)		(16)		(18)		(20)		(26)
Total Daily Hours		(168)		(192)		(216)		(240)		(312)
Daily Overtime Avoidance		(\$9,470)		(\$10,823)		(\$12,176)		(\$13,529)		(\$17,587)

Rolling Housing Reduction Plan

	Phase V		Phase VI		Phase VII	
ADP/Needed Beds	725/853		630/741		536/630	
Housing Area	Rated Beds	Posts/Day	Rated Beds	Posts/Day	Rated Beds	Posts/Day
Main Jail West	152	4	0	0	0	0
Main Jail East	154	4	154	4	0	0
Main Jail South	0	0	0	0	43	2
Main Jail Basement	0	0	0	0	0	0
Northwest	75	6	75	6	75	6
Intake and Release Center	128	8	128	8	128	8
Medium Security Facility	0	0	0	0	0	0
D Barracks	0	0	40	2	40	2
SBJ Total	509	22	397	20	286	18
NBJ Total	344	20	344	20	344	20
System-wide Total	853	42	741	40	630	38
Staffing Delta		(12)		(14)		(16)
Total Daily Hours		(144)		(168)		(192)
Daily Overtime Avoidance		(\$8,117)		(\$9,470)		(\$10,823)

System-wide Beds Required				
	Beds	-0.15	Target ADP	Trigger ADP
Phase V	853	-128	725	689
Phase VI	741	-111	630	598
Phase VII	630	-95	536	509

Custody Deputy Staff Deployment

<i>Available v Authorized</i>	
MJ Operations	108
NBJ Transition	17
Programs	4
Transport	17
Total Available	146
CTO/Academy (Training)	16
Extended Leave	9
Unfilled	5
Total Unavailable	30
Total Authorized	176

What happens if fewer Custody deputies are needed in Housing Areas?

- Overtime Usage is Avoided
- Areas with Staffing Deficiencies Can Be Appropriately Staffed
 - Transportation
 - Hospital/PHF Guard
 - Backfill for Vacancies (IOD, Military Leave, Vacation, Sick Leave, Training, Etc.)

This Will:

- Eliminate mandatory overtime
- Allow for wellness and other training
- Allow room for innovation
- Increase retention and improve job satisfaction
 - Custody deputy is one of the toughest jobs in the County

Questions?

