

EASTERN GOLETA VALLEY ESH/RC LAND USE & ZONING OVERLAYS MAP UPDATE



Photo: Debbie Johnson, AIS



Board of Supervisors August 14, 2018

Background

2

- EGVCP Policies and Actions
 - ▣ Environmentally Sensitive Habitat (ESH)
 - ▣ Riparian Corridor (RC)
- Land Use and Development Code (LUDC)
 - ▣ ESH and RC Overlays – Permit Regulations

Background

3

- ESH/RC Overlay Map
 - ▣ Most likely locations (but not all)
- Board of Supervisors Direction
 - ▣ Action ECO-EGV-5A



Use of ESH/RC Overlay Map

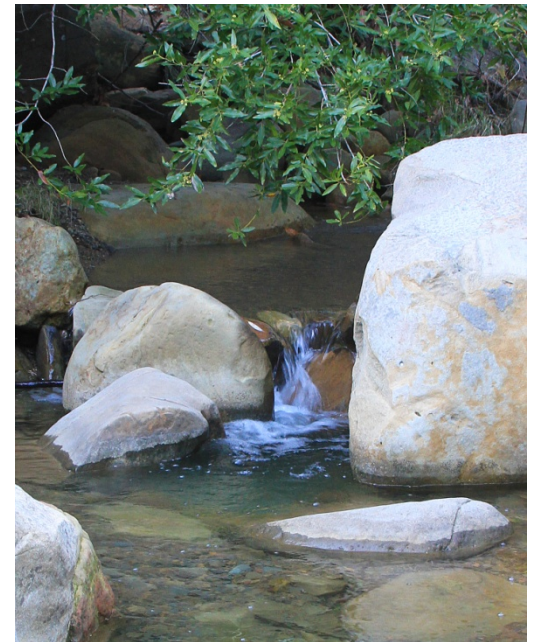
4

- Tool to Assist with ESH/RC Determination
- Snapshot in Time
- One of Several Factors
- ESH/RC Determination
 - ▣ Must be made at time of development
 - ▣ Conditions on the ground
 - ▣ Map – first step
 - ▣ Other biological resources

Project Description – Two Components

5

1. GIS/Vegetation Database & Map
2. ESH/RC Overlay Map



1. GIS/Vegetation Database & Map

6

- High Resolution Aerial Imagery
- Photo Interpretation
 - ▣ Field Reconnaissance and Data Gathering
 - ▣ Ground Truth
- National Standards
- Vegetation Alliances



Photo Interpretation

7



Ceanothus megacarpus



Ceanothus crassifolius

PHOTO SIGNATURE – TERRAIN SIGNATURE

8

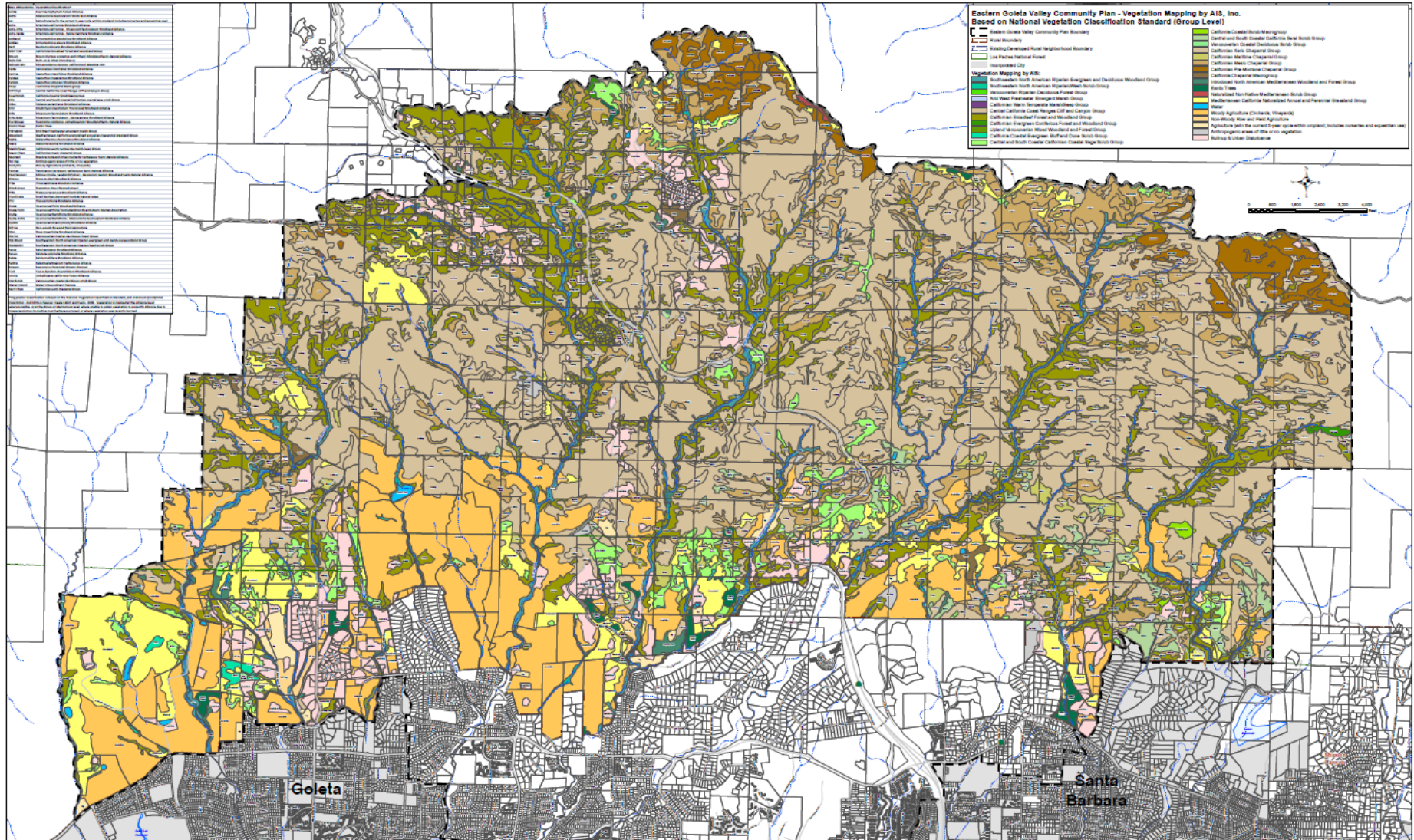
- View from above using digital aerial imagery in the office



- View of vegetation in the field

Vegetation Map

9



2. Updating the ESH/RC Overlays Map

10

- Rural Area & EDRNs Only
- Criteria
 - ▣ Policy ECO-EGV-5.4
 - ▣ All Riparian Habitats & Stream Corridors
 - Including non-native species if within stream corridors

2. Updating the ESH/RC Overlays Map

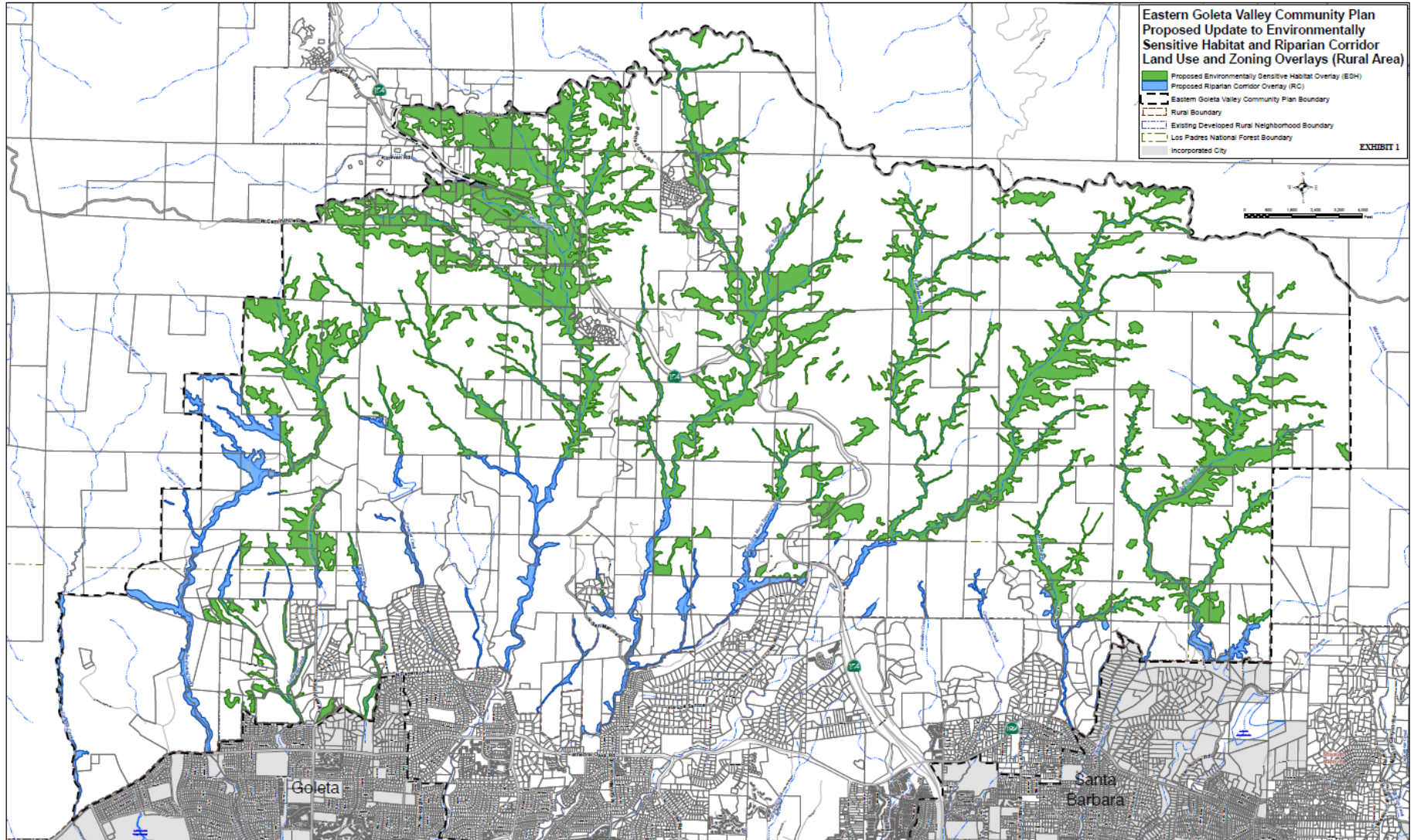
11

- Criteria (continued)
 - ▣ Global/State Rarity Rankings
 - G1/S1, G2/S2, G3/S3



Proposed Update ESH/RC Overlays

12



Revised ESH/RC Overlay Map

13

ESH and RC Mapped Acreage			
	Existing	Proposed	Change
ESH	1,939	2,175	+ 236
RC	393	329	- 64

- Qualifying Chaparral Added
- Coastal Sage Scrub Added

Public Outreach

14

- Community Meeting
- March 27, 2018



Planning Commission

15

- May 2, 2018
 - Disclaimer – Limitations of ESH/RC Overlay Map
 - Revise and Enlarge Text
 - Website Tools to Increase Prominence
 - Biological Resources Data Layer
 - New Web Pages
 - ESH/Biological Resources
 - Fuel Management Near ESH
- Unanimous Recommendation for Approval

Staff Recommendation

16

- Follow the Recommended Actions on pp. 1-2 of Board Letter
 - ▣ Make Findings for Approval
 - ▣ Determine No Additional Environmental Review Document Shall be Prepared
 - ▣ Adopt a Resolution Amending ESH/RC Land Use Overlay for Rural Area
 - ▣ Adopt an Ordinance Amending ESH/RC Zoning Overlay Map for Rural Area

EASTERN GOLETA VALLEY ESH/RC LAND USE & ZONING OVERLAYS MAP UPDATE



Photo: Debbie Johnson, AIS



Board of Supervisors August 14, 2018