

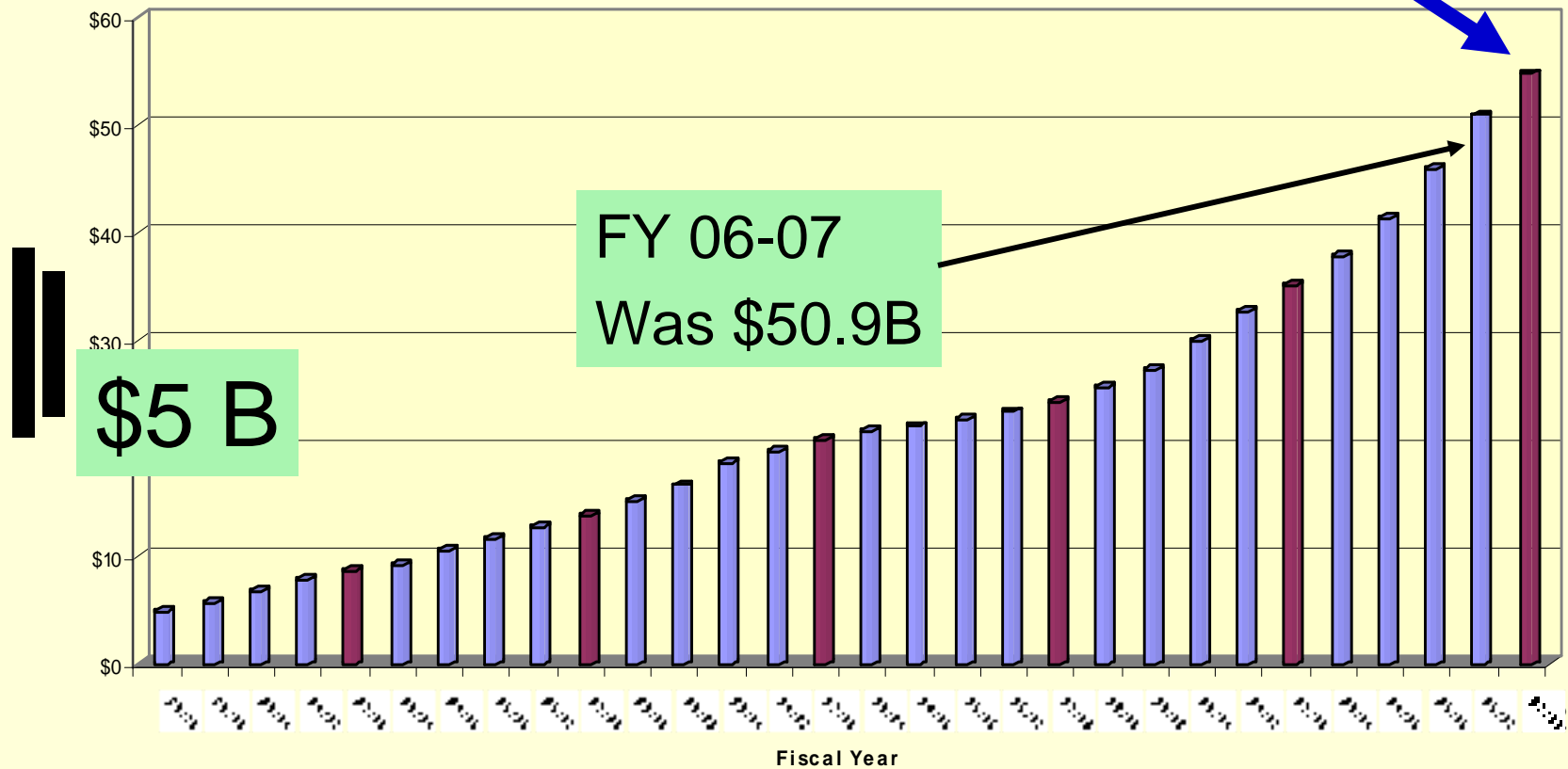
Clerk-Recorder-Assessor

***Some updated Property
Tax related information***

Clerk-Recorder-Assessor

FY 07-08 Actual = \$54.8 @ 7.6%

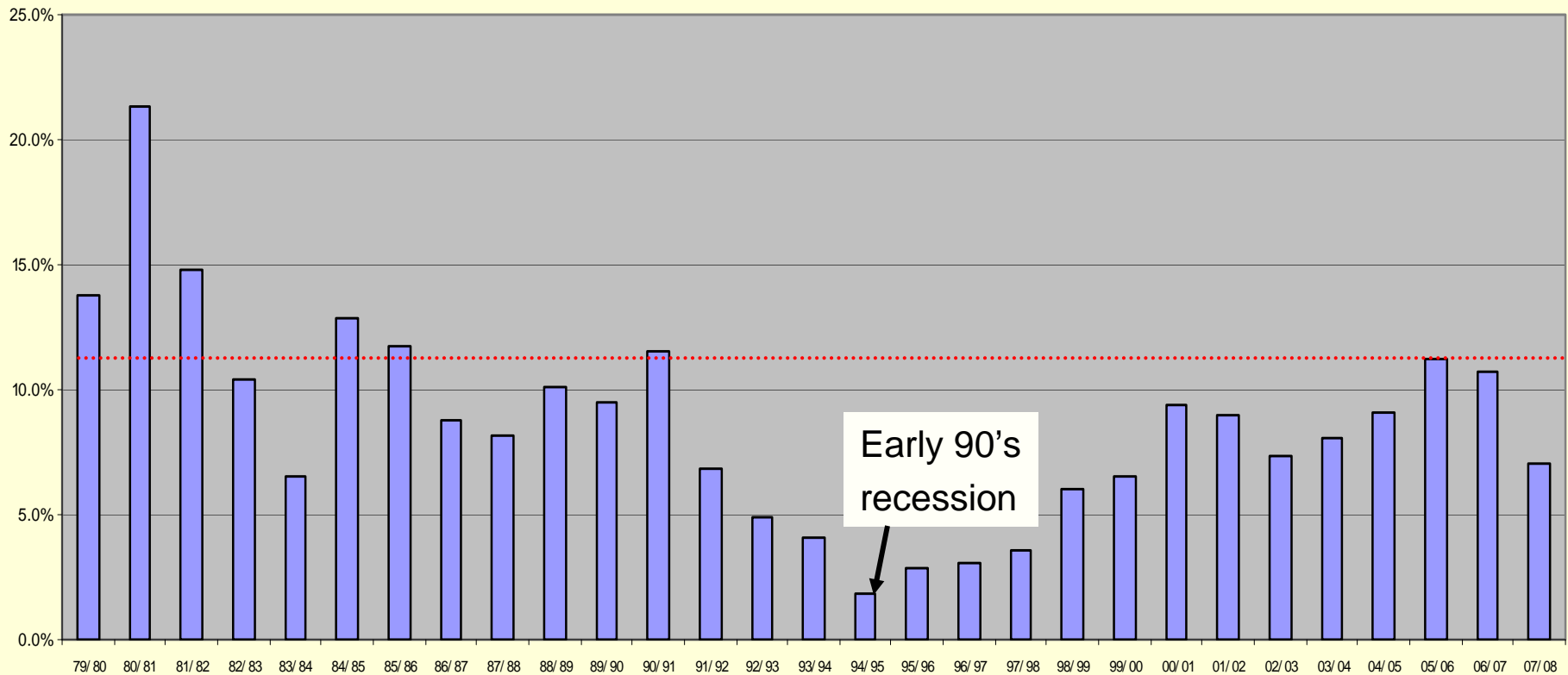
Santa Barbara County
Secured Assesment History (Net of Exemptions)
(in billions)



Clerk-Recorder-Assessor

Santa Barbara County
Secured Assessment Roll Percent Growth

FY 07-08 Actual = 7.6%
FY 08-09 Est = 4.0-5.0%



County-wide Secured Property Tax Growth Rates

Clerk-Recorder-Assessor

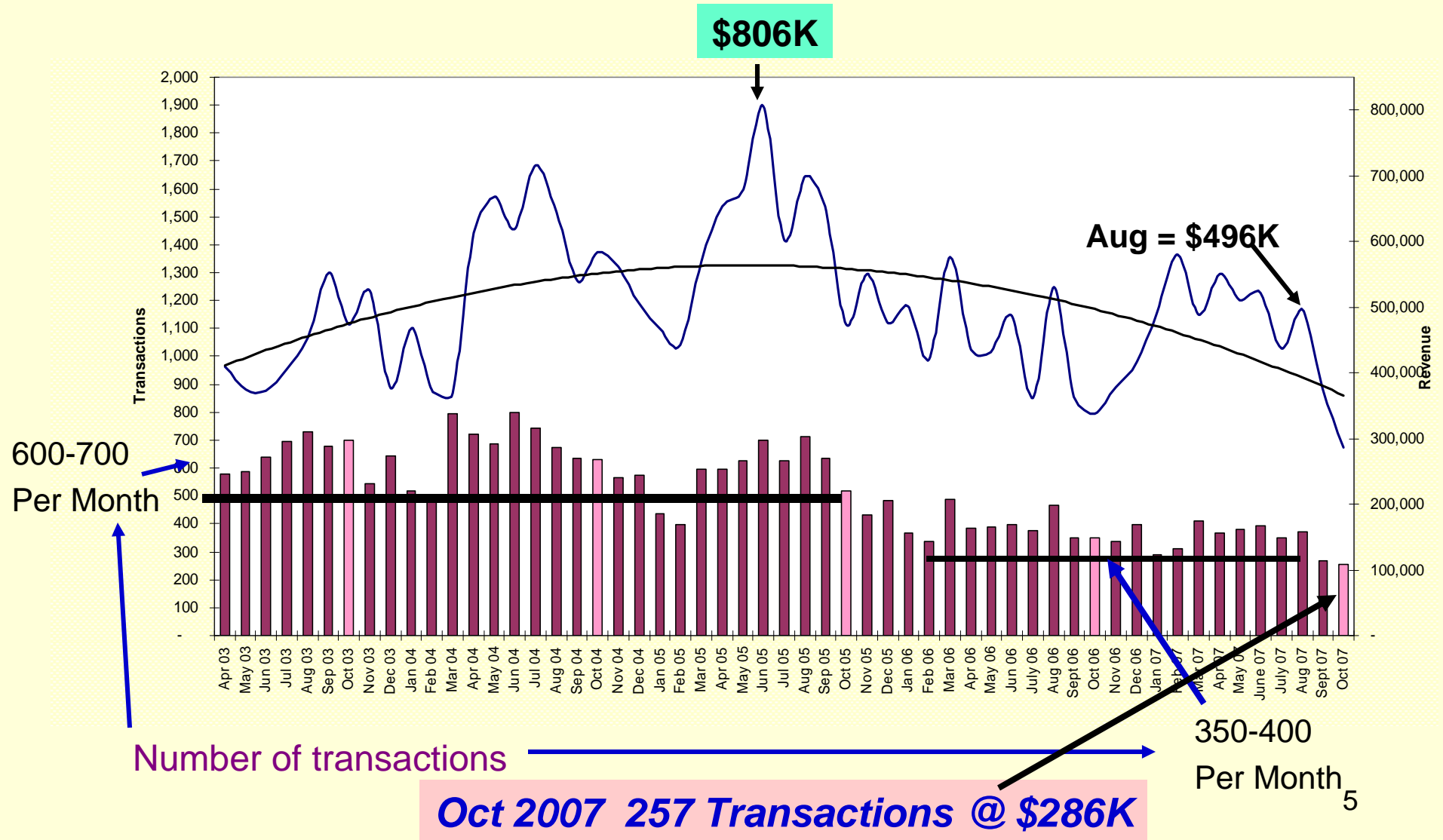
Section 51's Impact

	Est of Parcels Impacted	Estimated Value	Reduction /Parcel
South Coast	2,064	\$165,000,000	\$79,941
Central Valley	1,591	\$46,000,000	\$28,913
Santa Maria	3,085	\$175,000,000	\$56,726
Totals	6,740	\$386,000,000	\$57,270
	About 5.3% of Parcels of 126K	About 0.7% growth rate reduction on base of \$55B	

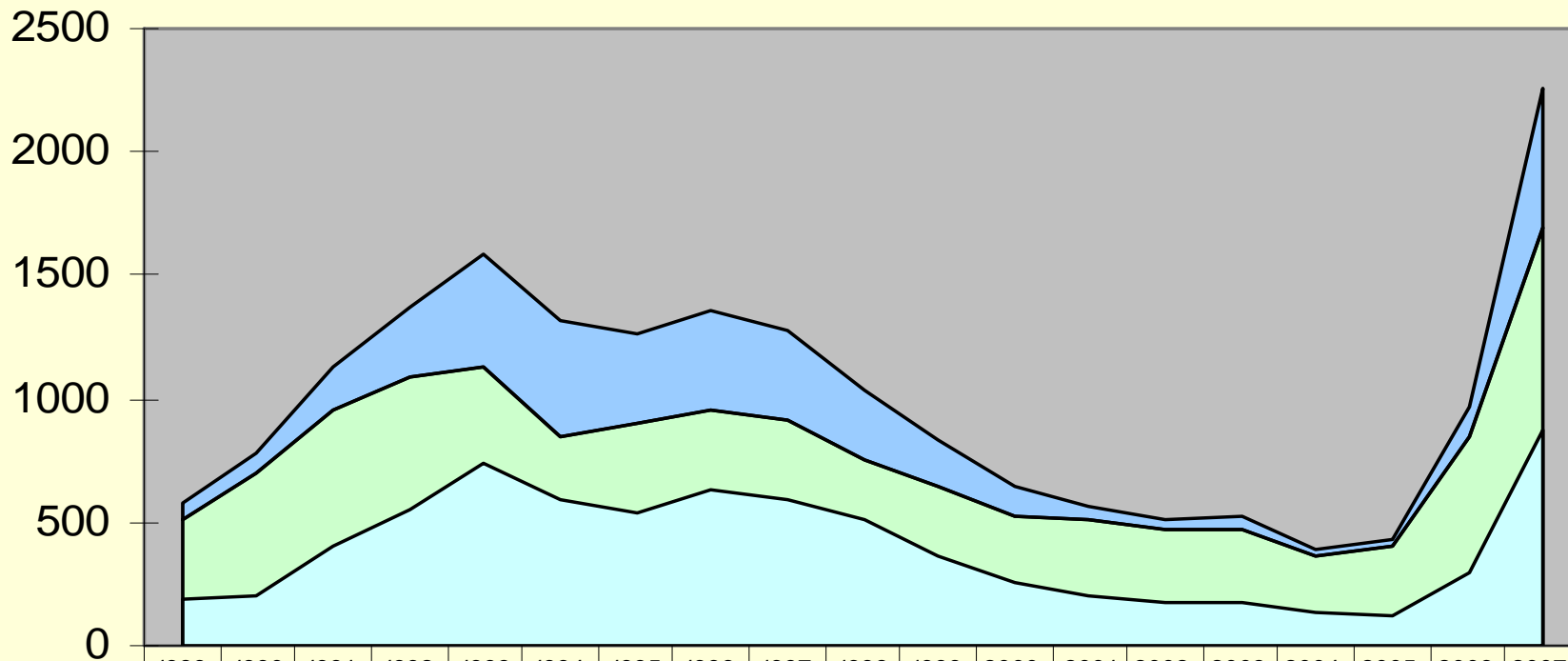
Proactive approach reduces Assessment Appeals, Roll Corrections and Workload in CRA, AC and TTC...and is required by law.

Clerk-Recorder-Assessor

Countywide Documentary Transfer Tax



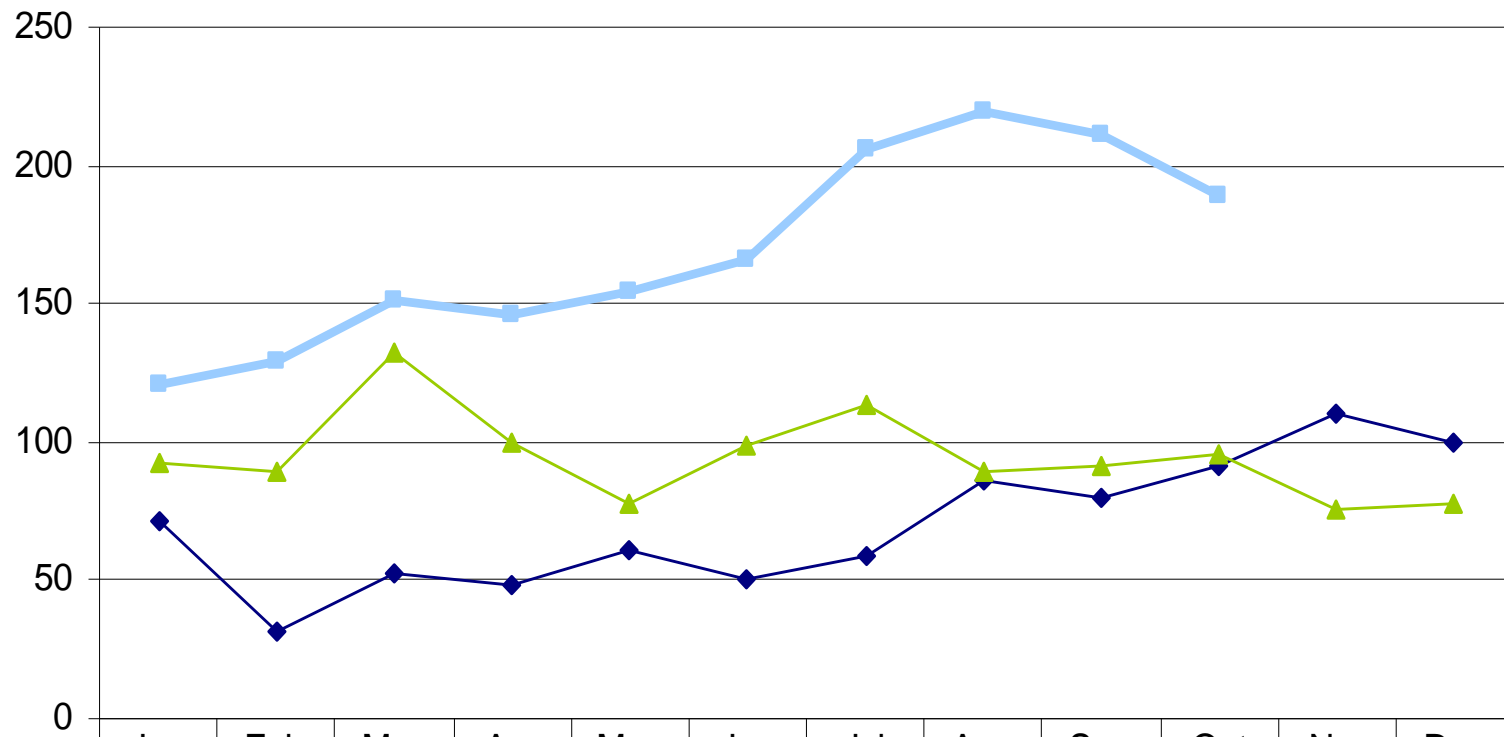
Notice of Defaults, Notice of Trustee's Sale and Trustee's Deeds



	1989	1990	1991	1992	1993	1994	1995	1996	1997	1998	1999	2000	2001	2002	2003	2004	2005	2006	2007
Trustee'sDeeds	66	75	182	294	452	459	364	403	372	293	197	125	61	31	52	18	24	129	567
Notice of Default	515	700	949	1082	1133	853	903	958	910	746	639	519	508	474	471	369	400	841	1694
Notice of TrusteesSale	189	206	405	554	734	585	543	634	590	516	368	254	201	170	172	129	116	293	877

Notice of Default
 Trustee'sDeeds
 Notice of Trustees Sale

Notice of Defaults



	Jan	Feb	Mar	Apr	May	Jun	Jul	Aug	Sep	Oct	Nov	Dec	Total
◆ 2006	71	32	53	48	61	50	59	86	80	91	110	100	976
■ 2007	121	129	151	146	154	166	206	220	211	189			2,171
▲ 1993	92	89	132	100	78	99	113	89	91	96	76	78	1,133