

SIGNATURE OMISSIONS

EASEMENT HOLDERS

THE SIGNATURES OF THE FOLLOWING EASEMENT HOLDERS HAVE BEEN OMITTED PURSUANT TO SECTION 66436(a)(3)(A)(i) OF THE GOVERNMENT CODE (STATE SUBDIVISION MAP ACT):

An easement for Private Pipelines and incidental purposes, recorded September 26, 1936 as Instrument No 7511 in Book 372, Page 439 of Official Records.
In Favor of: Union Oil Company of California

An easement for pipe line for the transportation of oil, gas, water and/or other liquids and incidental purposes, recorded March 26, 1962 as Instrument No. 11836 in Book 1913, Page 439 of Official Records.
In Favor of: Union Oil Company of California
The location of the easement cannot be determined from record information.
A modification of Right of Way recorded August 15, 1963 as Instrument No. 34958 in Book 2007, Page 1288 of Official Records.

An easement for public road and incidental purposes, recorded October 11, 1962 as Instrument No. 42912 in Book 1956, Page 872 of Official Records.
In Favor of: County of Santa Barbara

An easement for flood control and incidental purposes, recorded May 6, 1963 as Instrument No. 19520 in Book 1990, Page 861 of Official Records.
In Favor of: County of Santa Barbara and the Santa Barbara County Flood Control Conservation District

The terms and provisions contained in the document entitled "Grant of Easements and Agreement", by and between McCadden Development, LLC, a Delaware limited liability company and Rice Ranch Ventures, LLC, a Delaware limited liability company recorded November 2, 2006 as Instrument No. 2006-0086046 and 2006-0086047 of Official Records.
In Favor of: Rice Ranch Ventures, LLC, a Delaware limited liability company
For: non-exclusive emergency vehicle ingress and egress access easements

The terms and provisions contained in the document entitled "Declaration of Easements and Covenant Agreement" recorded April 17, 2009 as Instrument No. 2009-0021261 of Official Records.
In Favor of: Rice Ranch Ventures, LLC, a Delaware limited liability company
For: rights to install and maintain underground utility lines, ingress and egress

BOARD OF DIRECTORS' STATEMENT

I, MONA MIYASATO, CLERK OF THE BOARD OF DIRECTORS OF THE LAGUNA COUNTY SANITATION DISTRICT, DO HEREBY STATE THAT ON _____, 20____
I WAS DULY AUTHORIZED AND DIRECTED TO ENDORSE HEREON THE BOARD'S APPROVAL AND ACCEPTANCE OF THE OFFER OF DEDICATION OF EASEMENTS FOR PUBLIC SEWER PURPOSES AS SHOWN HEREON.

MONA MIYASATO
CLERK OF THE BOARD OF DIRECTORS OF
THE LAGUNA COUNTY SANITATION DISTRICT

BY: _____ DATE _____
DEPUTY

NOTE

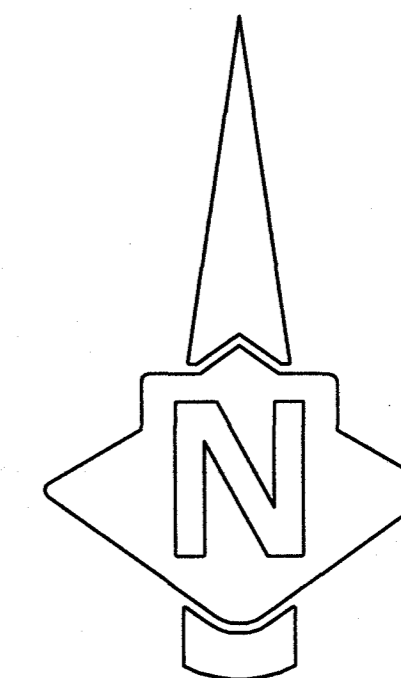
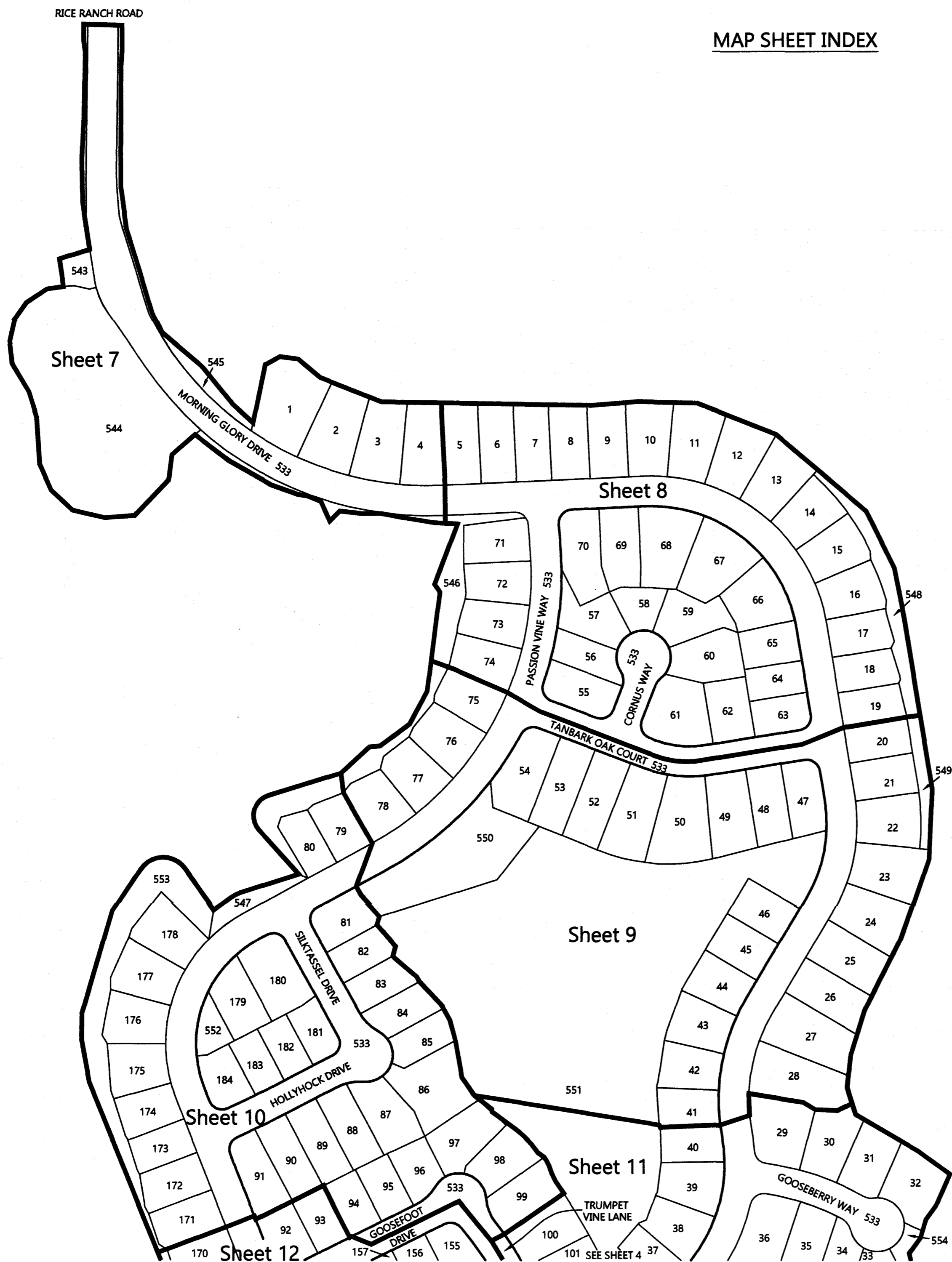
THIS MAP IS SUBJECT TO CERTAIN CONDITIONS AND INFORMATION INCLUDED IN A "NOTICE" AND RECORDED CONCURRENTLY AS INSTRUMENT NO. _____ OF OFFICIAL RECORDS.



7600 Morro Rd
Atascadero, CA 93422
ph (805)466-2446
info@dakosland surveys.com

RICE RANCH: VALLEY VIEW
TRACT 14,805 UNIT 3
Sheet 2 of 14
January 20, 2020
First American Title: 4001-5946690

MAP SHEET INDEX



GRAPHIC SCALE



(IN FEET)
1 inch = 150 ft.

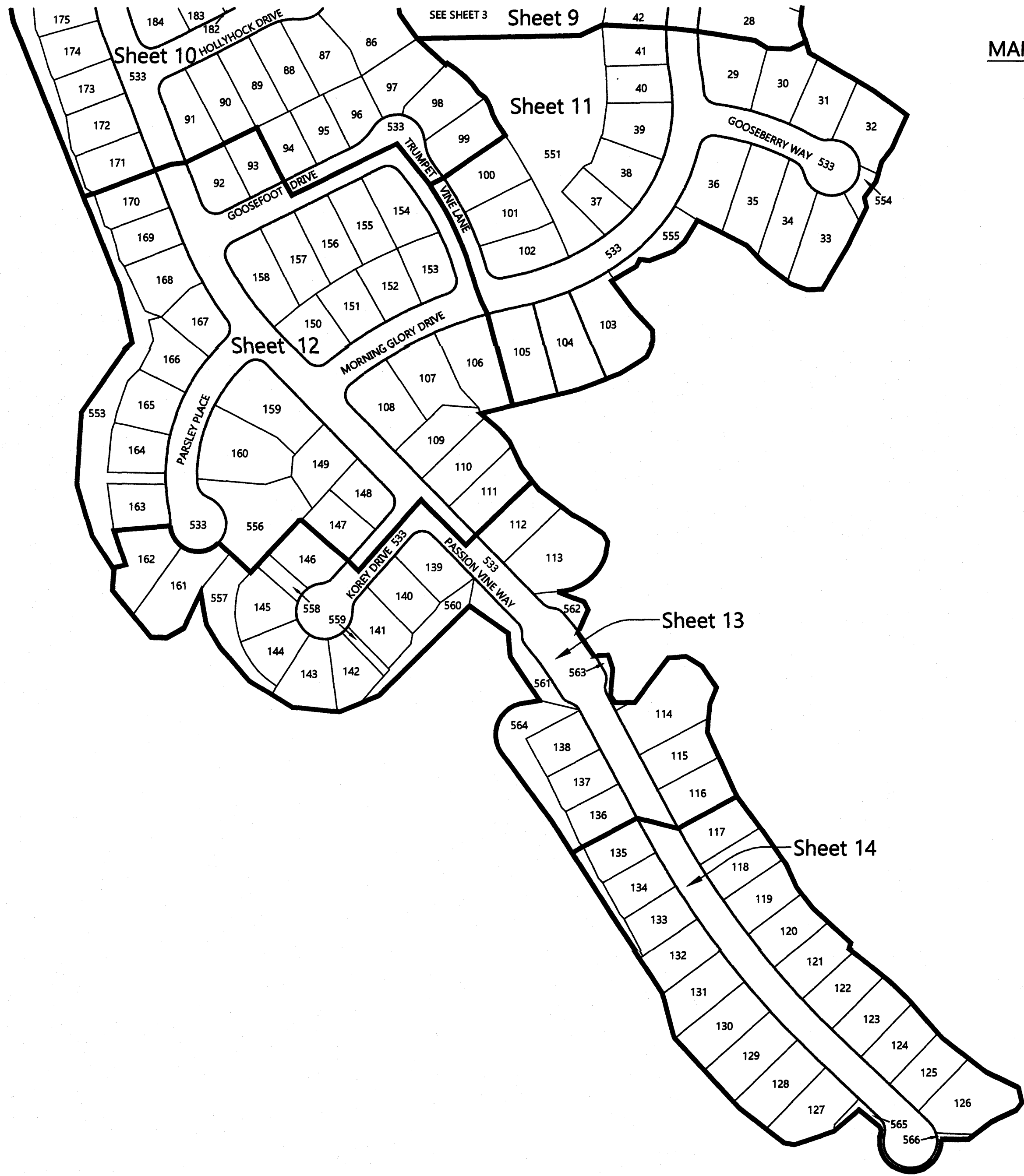


7600 Morro Rd
Atascadero, CA 93422
ph (805)466-2445
info@dakoslandsurveys.com

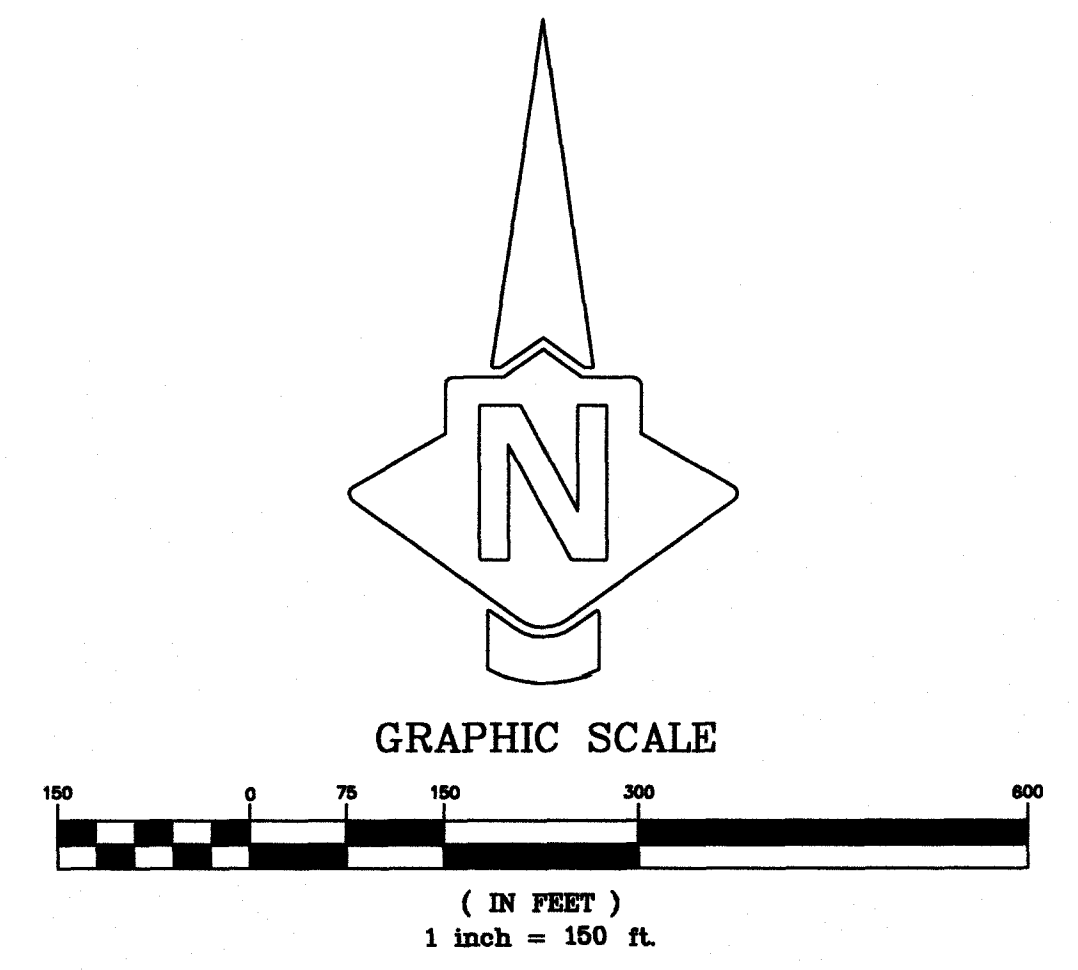
MAP SHEET INDEX NOTES

SEE SHEET 6 FOR CONVERSION FACTORS, AND BASIS OF BEARINGS. SEE SHEETS 5 AND 6 FOR TRACT BOUNDARY. SEE SHEETS 7 THROUGH 14 FOR INTERIOR LOTS.

RICE RANCH: VALLEY VIEW
TRACT 14,805 UNIT 3
Sheet 3 of 14
January 20, 2020
First American Title: 4001-5946690



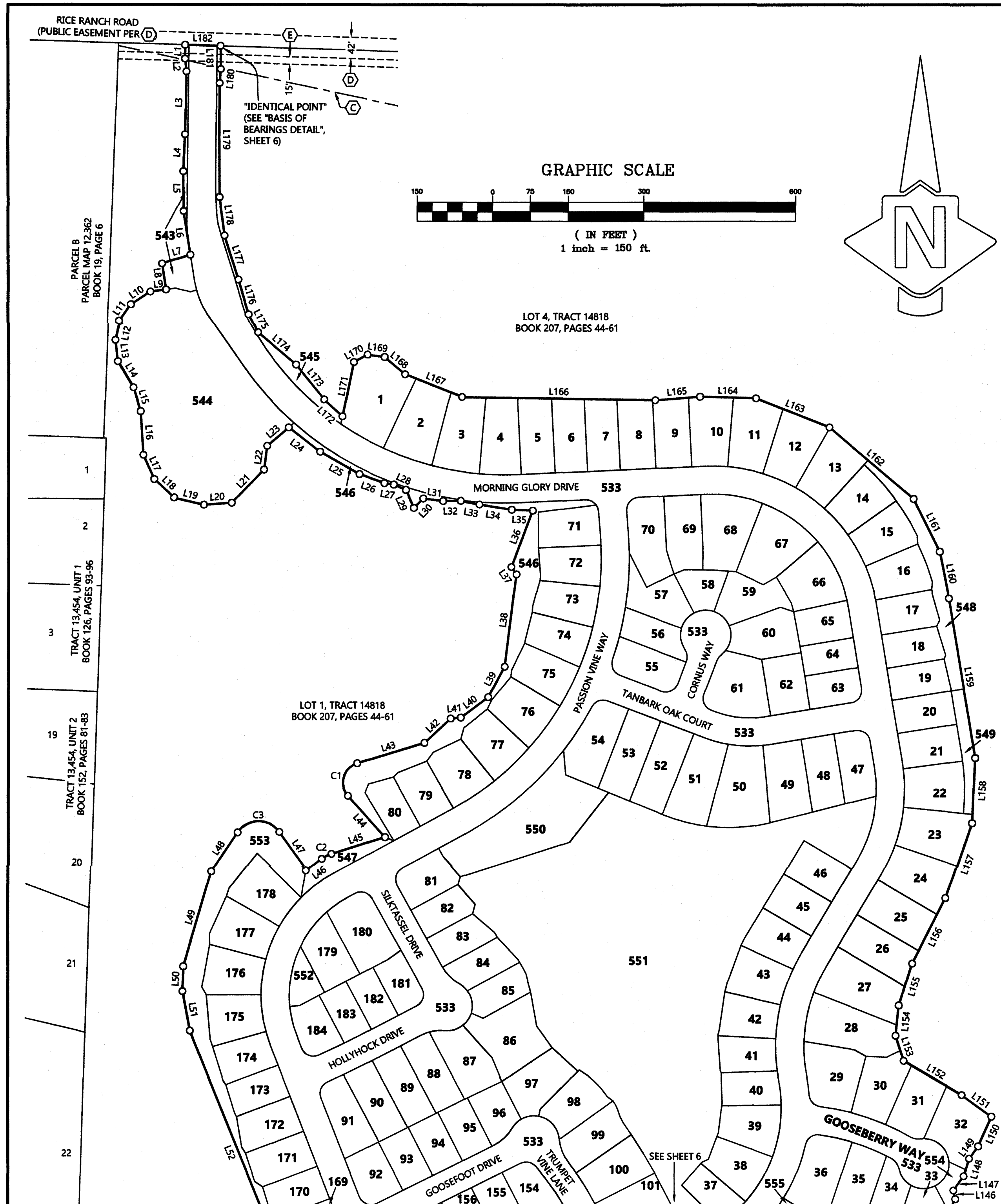
MAP SHEET INDEX



MAP SHEET INDEX NOTES
 SEE SHEET 6 FOR CONVERSION FACTORS, AND BASIS OF BEARINGS. SEE SHEETS 5 AND 6 FOR TRACT BOUNDARY. SEE SHEETS 7 THROUGH 14 FOR INTERIOR LOTS.



7600 Morro Rd Atascadero, CA 93422 ph (805)466-2445 info@dakoslandsurveys.com
 RICE RANCH: VALLEY VIEW TRACT 14,805 UNIT 3
 Sheet 4 of 14
 January 20, 2020
 First American Title: 4001-5946690



LINE TABLE

(LINE TABLE DATA LISTED ON THIS SHEET IS MEASURED AND RECORD PER TRACT 14,818, 207/MB/44-61, UNLESS NOTED WITH AN ASTERISK (*) WHICH INDICATES MEASURED AND RECORD PER CERTIFICATE OF CORRECTION, INSTRUMENT # 2019-0037802.)

LINE	LENGTH	BEARING	LINE	LENGTH	BEARING
L1	27.31	S00°52'53"W	L146	17.68	N12°06'17"W
L2	25.73	S06°27'38"E	L147	35.06	N35°44'26"E
L3	125.37	S01°11'02"W	L148	36.49	N16°52'18"E
L4	74.09	S02°34'23"W	L149	30.75	N36°16'55"E
L5	79.56	N00°29'00"W	L150	64.51	N23°54'02"E
L6	88.28	S08°38'39"E	L151	72.74	N53°29'08"W
L7	58.88	S72°26'04"W	L152	133.48	N59°18'25"W
L8	52.47	S08°23'38"E	L153	52.80	N17°31'32"W
L9	30.99	S82°17'56"W	L154	60.75	N06°07'45"E
L10	45.46	S56°16'12"W	L155	87.33	N17°29'59"E
L11	40.41	S35°38'32"W	L156	146.33	N26°45'31"E
L12	38.68	S12°56'39"W	L157	157.97	N19°00'43"E
L13	42.87	S06°14'43"E	L158	130.17	N02°35'12"E
L14	60.60	S30°43'14"E	L159	322.61	N09°13'15"W
L15	49.98	S17°04'23"E	L160	94.84	N11°05'29"W
L16	87.19	S03°22'03"E	L161	117.21	N25°56'55"W
L17	53.00	S23°50'38"E	L162	219.74	N49°25'32"W
L18	53.83	S46°57'01"E	L163	156.96	N68°20'57"W
L19	61.05	S76°39'18"E	L164	110.95	N88°20'25"W
L20	55.07	N85°53'00"E	L165	88.41	S85°21'54"W
L21	91.64	N43°57'32"E	L166	384.18	N89°02'41"W
L22	47.86	N07°32'44"E	L167	121.91	N68°02'16"W
L23	56.72	N49°07'09"E	L168	52.80	N49°33'16"W
L24	79.07	S52°04'35"E	L169	34.02	N82°24'42"W
L25	89.98	S60°12'40"E	L170	31.06	S61°22'05"W
L26	52.32	S70°10'59"E	L171	110.41	S11°44'53"W
L27	18.94	S81°11'13"E	L172	49.84	N47°37'59"W
L28	26.27	S66°23'16"E	L173	89.38	N38°43'29"W
L29	39.52	S23°56'31"E	L174	98.60	N49°22'41"W
L30	26.45	N44°14'29"E	L175	39.14	N26°21'08"W
L31	40.20	S82°44'01"E	L176	72.69	N16°44'31"W
L32	34.90	N89°34'28"E	L177	92.12	N17°14'41"W
L33	37.61	S79°29'33"E	L178	77.30	N07°22'44"W
L34	65.06	S80°29'30"E	L179	227.64	N00°02'05"W
L35	41.67	S87°15'36"E	*L180	28.34	N04°59'36"E
L36	120.04	S20°51'22"W	*L181	46.08	N00°16'46"W
L37	18.16	S34°12'30"E	L182	70.48	S88°14'36"E
L38	185.38	S07°12'13"W			
L39	68.92	S28°06'53"W			
L40	68.35	S53°01'27"W			
L41	20.01	S84°28'37"W			
L42	71.37	S47°12'44"W			
L43	139.43	S72°53'43"W			
L44	110.19	S41°46'44"E			
L45	111.50	S72°21'53"W			
L46	37.86	S53°14'01"W			
L47	93.63	N35°13'56"W			
L48	92.63	S33°36'46"W			
L49	197.72	S16°17'13"W			
L50	49.61	S01°29'40"W			
L51	79.89	S10°26'24"E			
L52	508.51	S21°42'12"E			

CURVE TABLE

(CURVE TABLE DATA LISTED ON THIS SHEET IS MEASURED AND RECORD PER TRACT 14,818, 207/MB/44-61. RADIAL BEARINGS LISTED ON THIS SHEET ARE MEASURED AND CALCULATED FROM RECORD PER TRACT 14,818, 207/MB/44-61.)

CURVE	RADIUS	DELTA	LENGTH	RADIAL	RADIAL
C1	40.00	114°40'27"	80.06	N48°13'16"E	N17°06'17"W
C2	65.00	19°07'52"	21.70	S36°45'59"E	N17°38'07"W
C3	50.00	111°09'18"	97.00	S56°23'14"E	N54°46'04"E

EASEMENT LEGEND

- (C) An easement for Private Pipelines and incidental purposes, recorded September 26, 1936 as Instrument No 7511 in Book 372, Page 439 of Official Records. In Favor of: Union Oil Company of California (SEE SHEET 7)
- (D) An easement for public road and incidental purposes, recorded October 11, 1962 as Instrument No. 42912 in Book 1956, Page 872 of Official Records. In Favor of: County of Santa Barbara (SEE SHEET 7)
- (E) An easement for flood control and incidental purposes, recorded May 6, 1963 as Instrument No. 19520 in Book 1990, Page 861 of Official Records. In Favor of: County of Santa Barbara and the Santa Barbara County Flood Control Conservation District (SEE SHEET 7)

BOUNDARY SHEET

BOUNDARY SHEET LEGEND

- O SEARCHED FOR 1/2" IRON PIPE WITH BRASS TAG MARKED "PLS 8310" PER R1, NOT FOUND, NOTHING SET (SEE R1 FOR ACTUAL SET MONUMENT DESCRIPTIONS)
- R1 TRACT 14,818 BOOK 207, PAGES 44-61
- R2 TRACT 14,636 BOOK 200, PAGES 93-99

BOUNDARY SHEET NOTES

DATA LISTED ON THIS SHEET IS GRID. SEE SHEET 6 FOR CONVERSION FACTORS AND BASIS OF BEARINGS. SEE SHEETS 7 THROUGH 14 FOR INTERIOR LOTS.

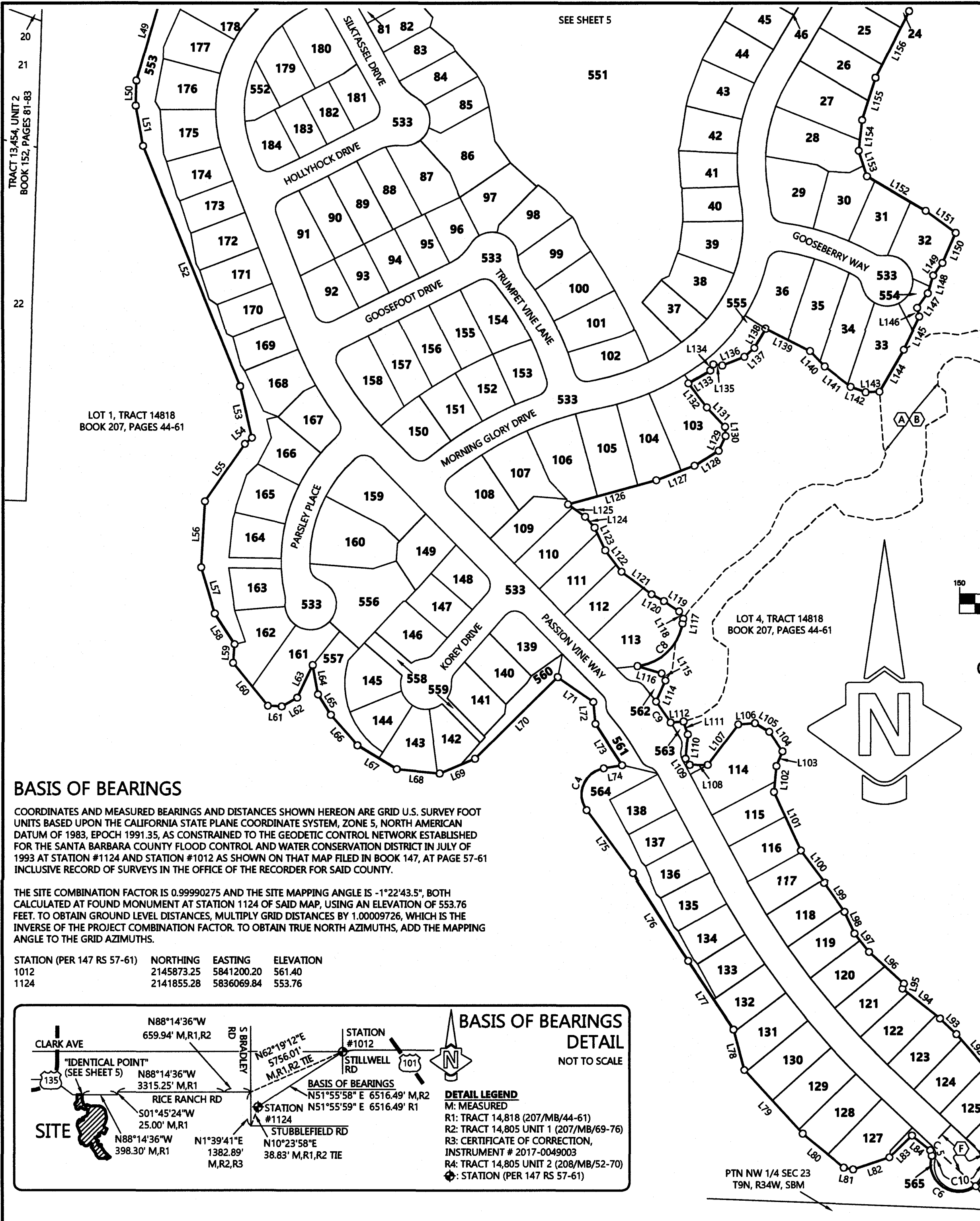
UNPLOTTABLE EASEMENTS

An easement for pipe line for the transportation of oil, gas, water and/or other liquids and incidental purposes, recorded March 26, 1962 as Instrument No. 11836 in Book 1913, Page 439 of Official Records. In Favor of: Union Oil Company of California. The location of the easement cannot be determined from record information. A modification of Right of Way recorded August 15, 1963 as Instrument No. 34958 in Book 2007, Page 1288 of Official Records.



7600 Morro Rd
Atascadero, CA 93422
ph (805)466-2445
info@dakoslandsurveys.com

RICE RANCH: VALLEY VIEW
TRACT 14,805 UNIT 3
Sheet 5 of 14
January 20, 2020
First American Title: 4001-5946690



BOUNDARY SHEET

BOUNDARY SHEET LEGEND

- SEARCHED FOR 1/2" IRON PIPE WITH BRASS TAG MARKED "PLS 8310" PER R1, NOT FOUND, NOTHING SET (SEE R1 FOR ACTUAL SET MONUMENT DESCRIPTIONS)
- R1 TRACT 14,818 BOOK 207, PAGES 44-61

BOUNDARY SHEET NOTES

DATA LISTED ON THIS SHEET IS GRID. SEE CONVERSION FACTORS AND BASIS OF BEARINGS, THIS SHEET. SEE SHEETS 7 THROUGH 14 FOR INTERIOR LOTS.

UNPLOTTABLE EASEMENTS

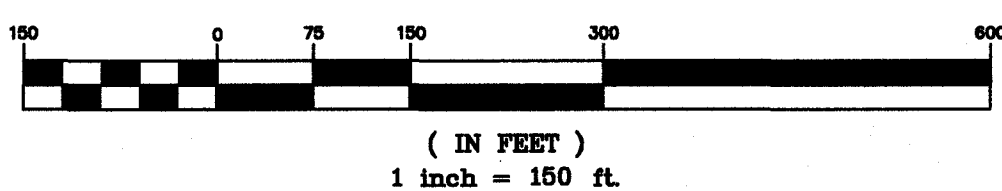
An easement for pipe line for the transportation of oil, gas, water and/or other liquids and incidental purposes, recorded March 26, 1962 as Instrument No. 11836 in Book 1913, Page 439 of Official Records. In Favor of: Union Oil Company of California
The location of the easement cannot be determined from record information.
A modification of Right of Way recorded August 15, 1963 as Instrument No. 34958 in Book 2007, Page 1288 of Official Records.

LINE TABLE

(LINE TABLE DATA LISTED ON THIS SHEET IS MEASURED AND RECORD PER TRACT 14,818, 207/MB/44-61.)

LINE	LENGTH	BEARING	LINE	LENGTH	BEARING
L49	197.72	S16°17'13"W	L103	31.25	N22°23'49"E
L50	49.61	S01°29'40"W	L104	46.56	N34°04'14"W
L51	79.89	S10°26'24"E	L105	32.66	N58°58'33"W
L52	508.51	S21°42'12"E	L106	32.66	S85°45'09"W
L53	103.91	S12°51'02"E	L107	99.12	S36°42'40"W
L54	18.28	S49°26'37"W	L108	35.13	S89°09'03"W
L55	137.20	S34°36'18"W	L109	14.72	N33°42'43"W
L56	130.00	S03°20'13"W	L110	47.86	N04°54'23"E
L57	94.71	S16°27'37"E	L111	26.77	N18°07'48"W
L58	71.78	S32°34'25"E	L112	25.31	S85°32'56"W
L59	36.83	S04°23'42"W	L114	45.43	N23°52'03"E
L60	108.44	S39°03'11"E	L115	15.91	N28°05'48"W
L61	27.39	S87°28'47"E	L116	49.73	N73°13'28"W
L62	34.93	N60°00'22"E	L117	9.27	N09°07'38"E
L63	70.72	N25°16'40"E	L118	16.66	N28°38'04"W
L64	58.52	S10°08'10"E	L119	36.47	N56°15'56"W
L65	47.07	S31°36'51"E	L120	27.73	N61°00'12"W
L66	79.49	S40°56'17"E	L121	74.00	N52°52'45"W
L67	90.01	S58°35'21"E	L122	52.47	N37°11'40"W
L68	84.54	S84°21'23"E	L123	49.36	N24°38'46"W
L69	74.89	N67°14'37"E	L124	28.30	N40°39'30"W
L70	227.66	N45°09'29"E	L125	41.27	N53°57'26"W
L71	84.78	S54°43'45"E	L126	179.14	N74°46'04"E
L72	42.91	S05°11'55"E	L127	79.87	N69°04'20"E
L73	96.97	S32°43'42"E	L128	55.85	S57°49'10"W
L74	36.50	S80°16'04"W	L129	31.92	N24°51'20"E
L75	153.21	S36°06'21"E	L130	18.08	N03°23'02"W
L76	204.60	S32°21'03"E	L131	52.06	N43°00'29"W
L77	160.91	S33°19'27"E	L132	59.09	N37°20'05"W
L78	82.15	S14°59'30"E	L133	49.74	N59°10'07"E
L79	169.54	S42°19'23"E	L134	13.56	N26°00'28"E
L80	104.12	S50°19'00"E	L135	17.68	S82°34'29"E
L81	18.41	S79°04'30"E	L136	46.58	N68°28'27"E
L82	74.36	N71°19'45"E	L137	25.90	N48°21'44"E
L83	61.12	N45°52'06"E	L138	44.21	N30°58'03"E
L84	46.05	N50°52'37"W	L139	96.91	S62°53'25"E
L85	47.86	N89°38'46"W	L140	41.35	S43°21'18"E
L86	51.01	S52°11'17"W	L141	64.24	S51°57'13"E
L87	48.05	N64°32'44"E	L142	31.13	S69°38'54"E
L88	18.45	N37°23'43"E	L143	27.03	N87°30'03"E
L89	26.77	N13°24'51"W	L144	94.83	N30°16'51"E
L90	62.86	N64°08'30"W	L145	71.92	N25°28'51"E
L91	98.55	N51°40'15"W	L146	17.68	N12°06'17"W
L92	94.10	N41°05'06"W	L147	35.06	N35°44'26"E
L93	44.30	N46°19'12"W	L148	36.49	N16°52'18"E
L94	94.15	N51°15'20"W	L149	30.75	N36°16'55"E
L95	10.48	N15°37'16"E	L150	64.51	N23°54'02"E
L96	91.86	N47°16'28"W	L151	72.74	N53°29'08"W
L97	45.96	N37°40'37"W	L152	133.48	N59°18'25"W
L98	46.66	N24°24'15"W	L153	52.80	N17°31'32"W
L99	69.05	N35°07'23"W	L154	60.75	N06°07'45"E
L100	79.29	N36°42'04"W	L155	87.33	N17°29'59"E
L101	126.48	N24°30'25"W	L156	146.33	N26°45'31"E
L102	51.07	N05°24'37"E			

GRAPHIC SCALE



CURVE TABLE

(CURVE TABLE DATA LISTED ON THIS SHEET IS MEASURED AND RECORD PER TRACT 14,818, 207/MB/44-61, UNLESS NOTED WITH AN ASTERISK (*) WHICH INDICATES MEASURED AND RECORD PER CERTIFICATE OF CORRECTION, INSTRUMENT # 2019-0037802.
RADIAL BEARINGS LISTED ON THIS SHEET ARE MEASURED AND CALCULATED FROM RECORD PER TRACT 14,818, 207/MB/44-61.)

CURVE	RADIUS	DELTA	LENGTH	RADIAL	RADIAL
C4	52.00	116°22'25"	105.62	N53°53'39"E	N09°43'56"W
*C5	10.00	67°51'12"	11.84	S39°07'23"W	S73°01'25"E
*C6	55.00	143°46'26"	138.01	N73°01'25"W	S36°47'50"E
*C7	55.00	56°30'17"	54.24	S36°47'50"E	N86°41'53"E
C8	100.00	75°07'44"	131.12	S80°52'22"E	S05°44'38"E
C9	694.00	4°07'25"	49.95	N53°14'30"E	N57°21'56"E
*C10	55.00	200°16'43"	192.25	N73°01'25"W	N86°41'53"E

EASEMENT LEGEND

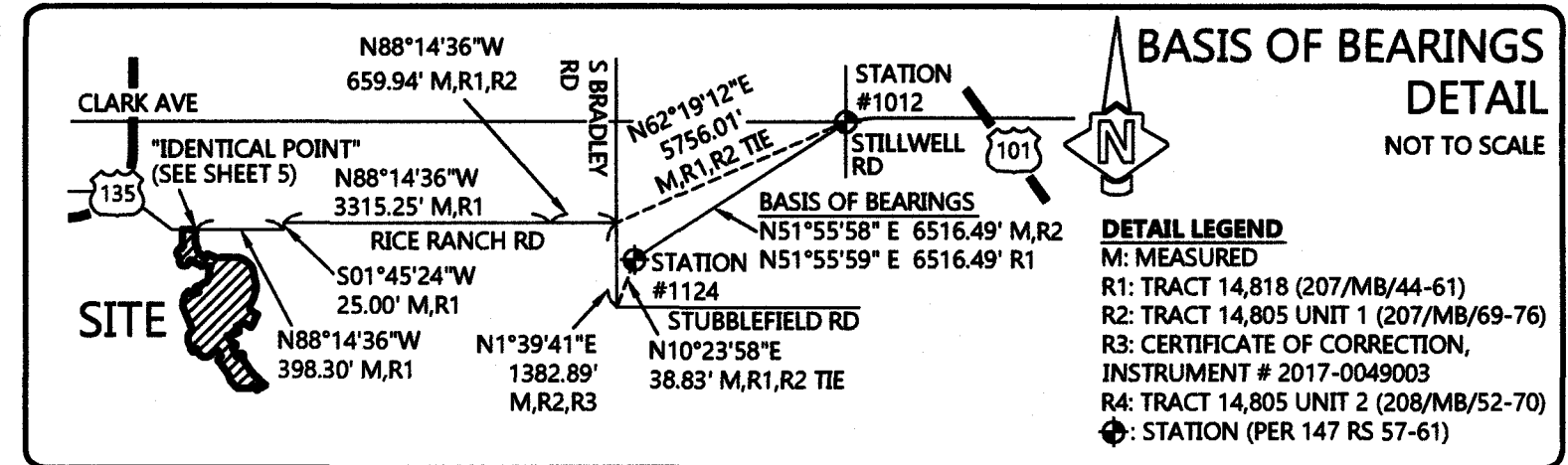
- (A) Easement dedicated to the County of Santa Barbara for private fire access (private secondary access roadway) purposes, to be open and unobstructed, over Lots 2, and 4 of T14,818 for the benefit of Lot 10 of T14,818, and also for public trail purposes per R1.
- (B) Easement for private ingress and egress purposes over Lots 2 and 4 of T14,818 for the benefit of Lot 10 of T14,818 per R1.
- (F) The terms and provisions contained in the document entitled "Grant of Easements and Agreement", by and between McCadden Development, LLC, a Delaware limited liability company and Rice Ranch Ventures, LLC, a Delaware limited liability company recorded November 2, 2006 as Instrument No. 2006-0086046 and 2006-0086047 of Official Records.
In Favor of: Rice Ranch Ventures, LLC, a Delaware limited liability company
For: non-exclusive emergency vehicle ingress and egress access easements
The terms and provisions contained in the document entitled "Declaration of Easements and Covenant Agreement" recorded April 17, 2009 as Instrument No. 2009-0021261 of Official Records.
In Favor of: Rice Ranch Ventures, LLC, a Delaware limited liability company
For: rights to install and maintain underground utility lines, ingress and egress (SEE SHEET 14)

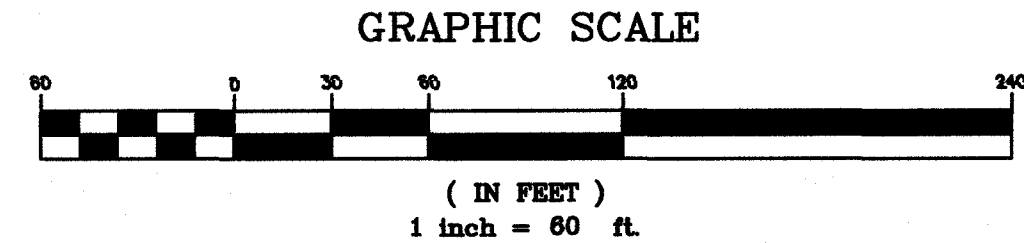
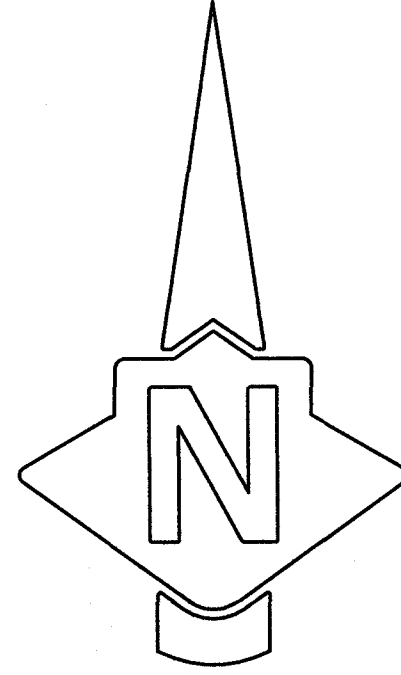
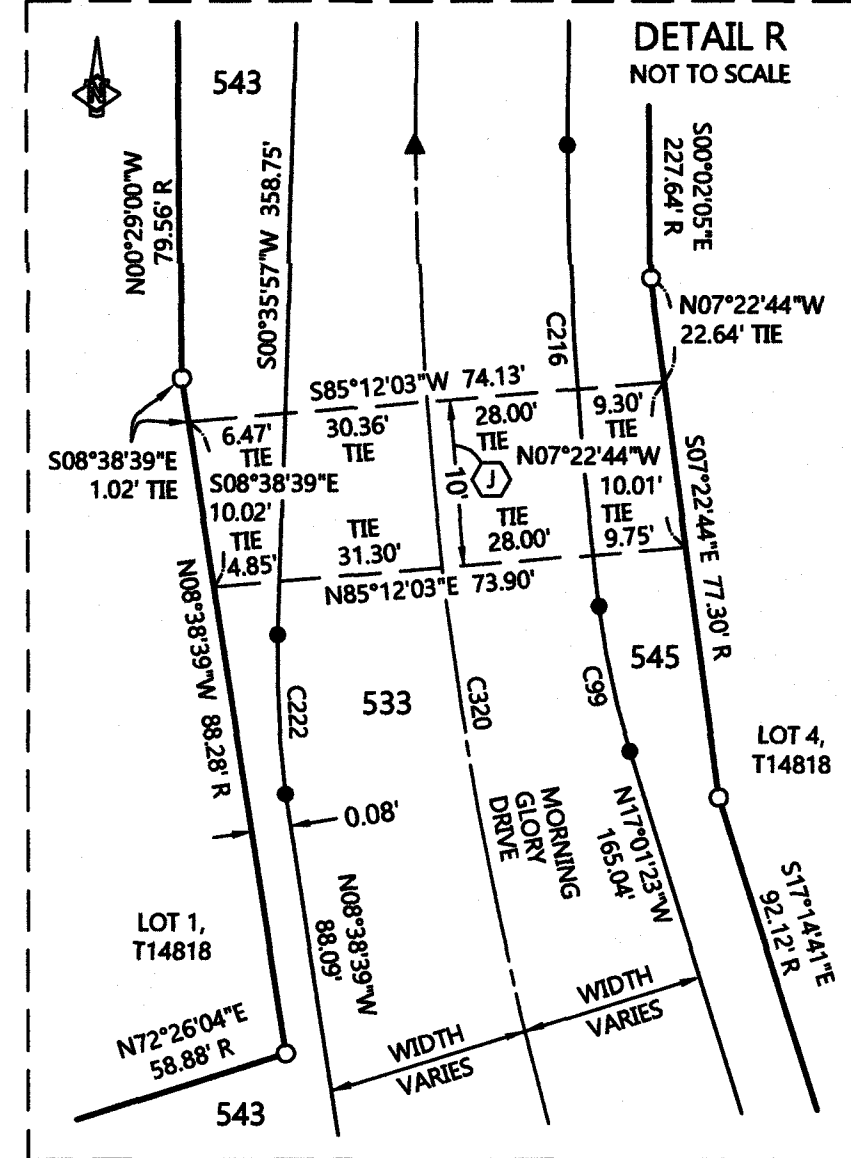
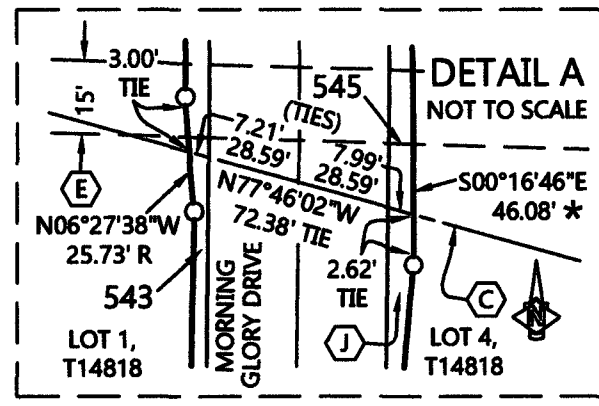
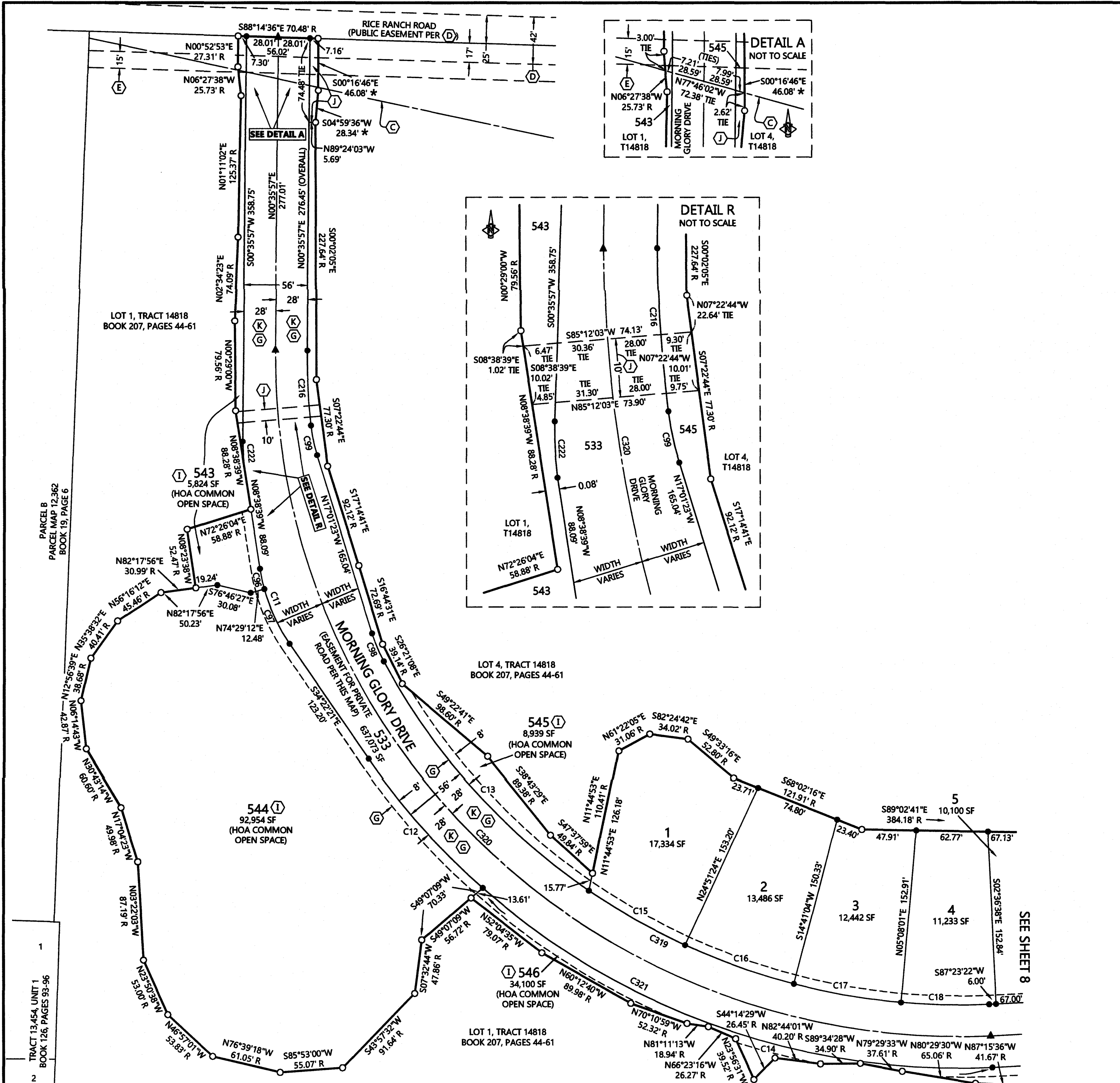
BASIS OF BEARINGS

COORDINATES AND MEASURED BEARINGS AND DISTANCES SHOWN HEREON ARE GRID U.S. SURVEY FOOT UNITS BASED UPON THE CALIFORNIA STATE PLANE COORDINATE SYSTEM, ZONE 5, NORTH AMERICAN DATUM OF 1983, EPOCH 1991.35, AS CONSTRAINED TO THE GEODETIC CONTROL NETWORK ESTABLISHED FOR THE SANTA BARBARA COUNTY FLOOD CONTROL AND WATER CONSERVATION DISTRICT IN JULY OF 1993 AT STATION #1124 AND STATION #1012 AS SHOWN ON THAT MAP FILED IN BOOK 147, AT PAGE 57-61 INCLUSIVE RECORD OF SURVEYS IN THE OFFICE OF THE RECORDER FOR SAID COUNTY.

THE SITE COMBINATION FACTOR IS 0.99990275 AND THE SITE MAPPING ANGLE IS -1°22'43.5", BOTH CALCULATED AT FOUND MONUMENT AT STATION 1124 OF SAID MAP, USING AN ELEVATION OF 553.76 FEET. TO OBTAIN GROUND LEVEL DISTANCES, MULTIPLY GRID DISTANCES BY 1.00009726, WHICH IS THE INVERSE OF THE PROJECT COMBINATION FACTOR. TO OBTAIN TRUE NORTH AZIMUTHS, ADD THE MAPPING ANGLE TO THE GRID AZIMUTHS.

STATION (PER 147 RS 57-61)	NORTHING	EASTING	ELEVATION
1012	2145873.25	5841200.20	561.40
1124	2141855.28	5836069.84	553.76





CURVES

CURVE	RADIUS	DELTA	LENGTH	RADIAL	RADIAL
C11	159.92	25°43'42"	71.81	S 81°21'21" W	N 55°37'39" E
C12	629.34	13°54'21"	152.74	S 55°37'39" W	S 41°43'18" W
C13	573.34	27°24'43"	274.30	S 61°59'50" W	S 34°35'07" W
C14	629.34	44°19'56"	486.95	S 02°36'38" E	N 41°43'18" E
C15	573.34	9°43'44"	97.35	N34°35'07"E	S24°51'24"W
C16	573.34	10°10'19"	101.79	S24°51'24"W	S14°41'04"W
C17	573.34	9°33'03"	95.57	S14°41'04"W	S05°08'01"W
C18	573.34	7°44'39"	77.49	S05°08'01"W	S02°36'38"E
C96	159.92	6°34'26"	18.35	N81°21'21"E	S74°46'55"W
C97	159.92	19°09'16"	53.46	S74°46'55"W	N55°37'39"E
C98	140.08	10°58'47"	26.84	S61°59'50"W	N72°58'37"E
C99	140.08	10°58'47"	26.84	S72°58'37"W	N83°57'24"E
C216	573.34	6°38'34"	66.47	S89°24'03"E	S83°57'24"W
C222	159.92	9°14'36"	25.80	S89°24'03"E	S81°21'21"W
C319	573.34	64°36'28"	646.51	N61°59'50"E	S02°36'38"E
C320	601.34	93°12'36"	978.27	S89°24'03"E	S02°36'38"E
C321	629.34	58°14'17"	639.69	N55°37'39"E	S02°36'38"E

EASEMENT LEGEND

- (C) An easement for Private Pipelines and incidental purposes, recorded September 26, 1936 as Instrument No 7511 in Book 372, Page 439 of Official Records. In Favor of: Union Oil Company of California
- (D) An easement for public road and incidental purposes, recorded October 11, 1962 as Instrument No. 42912 in Book 1956, Page 872 of Official Records. In Favor of: County of Santa Barbara
- (E) An easement for flood control and incidental purposes, recorded May 6, 1963 as Instrument No. 19520 in Book 1990, Page 861 of Official Records. In Favor of: County of Santa Barbara and the Santa Barbara County Flood Control Conservation District
- (G) Offer for Public Utility Easement to the County of Santa Barbara per this map
- (I) Private Drainage Easement per this map
- (J) Offer for Public Multi-Use Trail Easement to the County of Santa Barbara per this map
- (K) Offer for Public Sewer Easement to Laguna County Sanitation District per this map

LEGEND

- SET 1/2" GALVANIZED IRON PIPE WITH BRASS TAG STAMPED "L.S. 8769"
- ▲ SET 2" BRASS CAP STAMPED "L.S. 8769" IN MONUMENT WELL
- SEARCHED FOR 1/2" IRON PIPE WITH BRASS TAG MARKED "PLS 8310" PER R1, NOT FOUND, NOTHING SET (SEE R1 FOR ACTUAL SET MONUMENT DESCRIPTIONS)
- D DELTA
- # RADIAL BEARING
- R MEASURED AND R1
- R1 T14,818 BOOK 207, PAGES 44-61
- SF SQUARE FEET
- * MEASURED AND RECORD PER CERTIFICATE OF CORRECTION, INSTRUMENT # 2019-0037802.

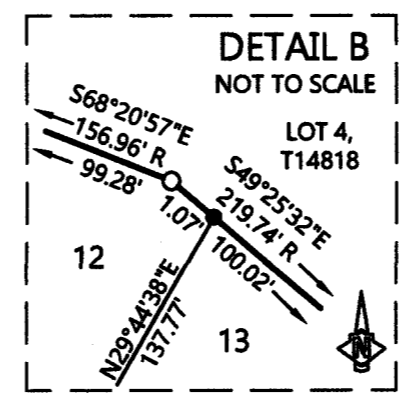
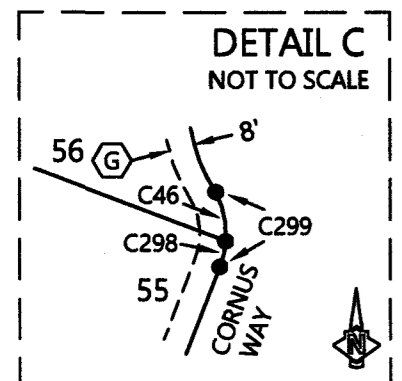
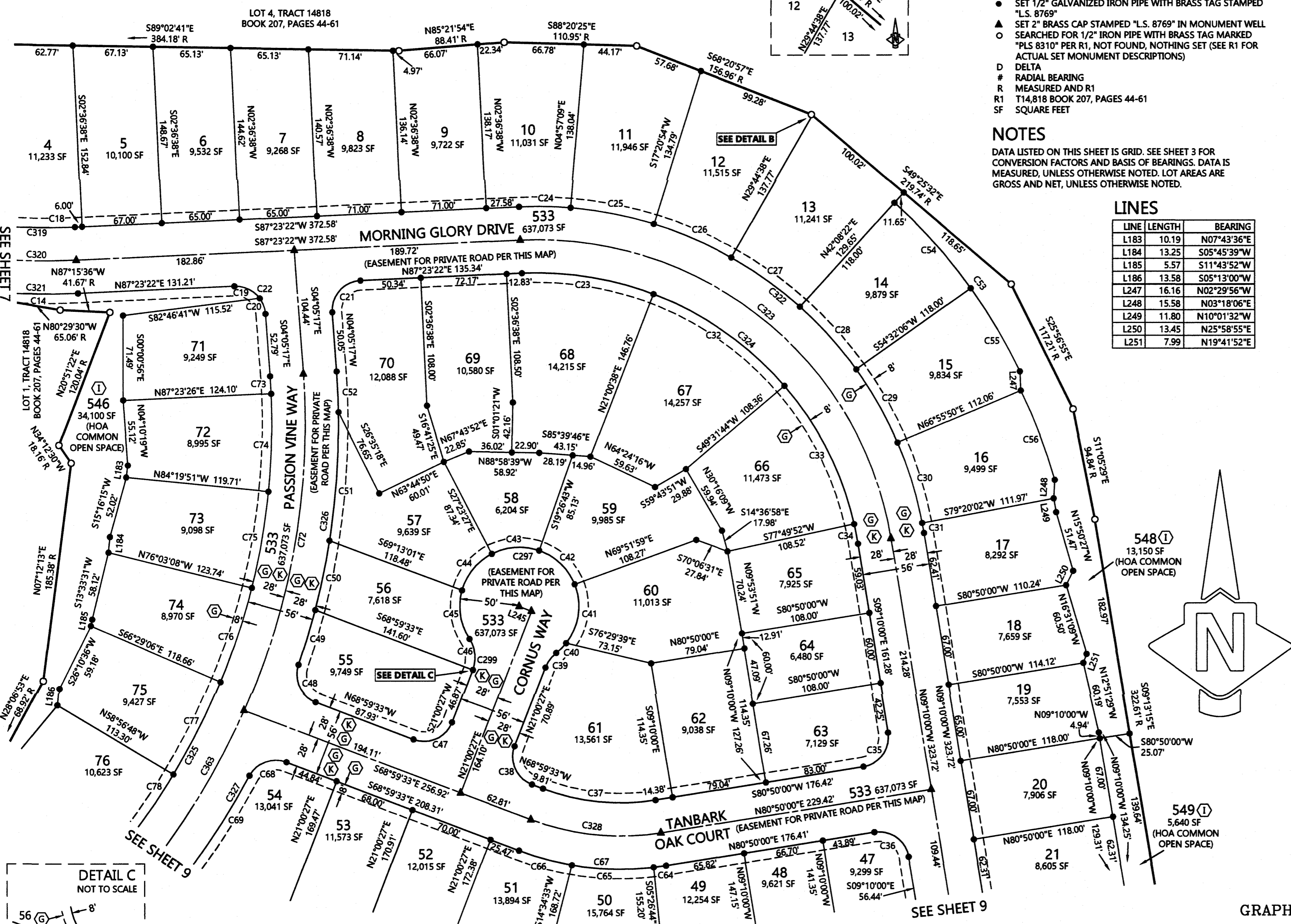


7600 Morro Rd
Atascadero, CA 93422
ph (805)466-2445
info@dakosland surveys.com

NOTES

DATA LISTED ON THIS SHEET IS GRID. SEE SHEET 3 FOR CONVERSION FACTORS AND BASIS OF BEARINGS. DATA IS MEASURED, UNLESS OTHERWISE NOTED. LOT AREAS ARE GROSS AND NET, UNLESS OTHERWISE NOTED.

RICE RANCH: VALLEY VIEW
TRACT 14,805 UNIT 3
Sheet 7 of 14
January 20, 2020
First American Title: 4001-5946690



EASEMENT LEGEND

- (G) Offer for Public Utility Easement to the County of Santa Barbara per this map
- (L) Private Drainage Easement per this map
- (K) Offer for Public Sewer Easement to Laguna County Sanitation District per this map

LEGEND

- SET 1/2" GALVANIZED IRON PIPE WITH BRASS TAG STAMPED "L.S. 8769"
- ▲ SET 2" BRASS CAP STAMPED "L.S. 8769" IN MONUMENT WELL SEARCHED FOR 1/2" IRON PIPE WITH BRASS TAG MARKED "PLS 8310" PER R1, NOT FOUND, NOTHING SET (SEE R1 FOR ACTUAL SET MONUMENT DESCRIPTIONS)
- D DELTA
- # RADIAL BEARING
- R MEASURED AND R1
- R1 T14,818 BOOK 207, PAGES 44-61
- SF SQUARE FEET

NOTES

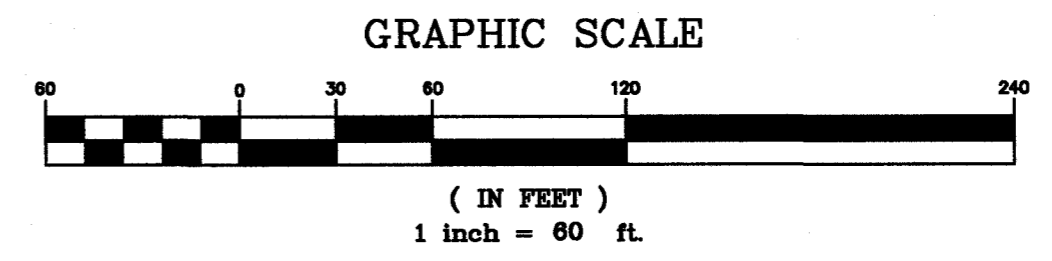
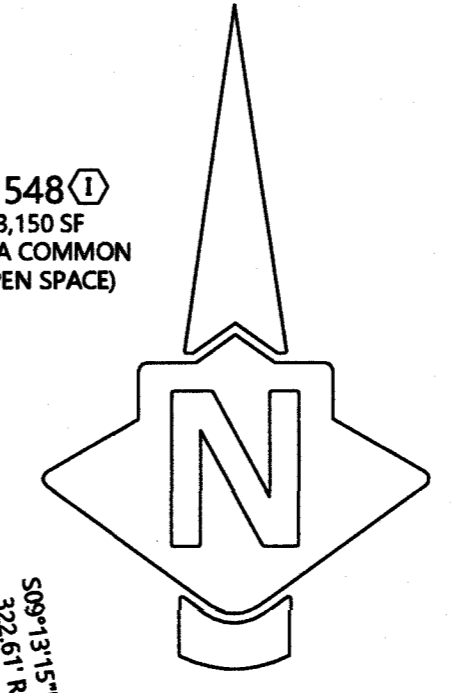
DATA LISTED ON THIS SHEET IS GRID. SEE SHEET 3 FOR CONVERSION FACTORS AND BASIS OF BEARINGS. DATA IS MEASURED, UNLESS OTHERWISE NOTED. LOT AREAS ARE GROSS AND NET, UNLESS OTHERWISE NOTED.

LINES

LINE	LENGTH	BEARING
L183	10.19	N07°43'36"E
L184	13.25	S05°45'39"W
L185	5.57	S11°43'52"W
L186	13.58	S05°13'00"W
L247	16.16	N02°29'56"W
L248	15.58	N03°18'06"E
L249	11.80	N10°01'32"W
L250	13.45	N25°58'55"E
L251	7.99	N19°41'52"E

CURVES

CURVE	RADIUS	DELTA	LENGTH	RADIAL	RADIAL
C14	629.34	44°19'56"	486.95	S 02°36'38" E	N 41°43'18" E
C18	573.34	7°44'39"	77.49	S05°08'01"W	S02°36'38"E
C19	25.00	56°26'36"	24.63	S02°36'38"E	N53°49'58"E
C20	25.00	32°04'45"	14.00	N53°49'58"E	S85°54'43"W
C21	25.00	91°28'39"	39.91	S 02°36'38" E	S 85°54'43" W
C22	25.00	88°31'21"	38.62	S02°36'38"E	N85°54'43"E
C23	272.00	23°37'16"	112.14	S 21°00'38" W	N 02°36'38" E
C24	328.00	7°33'48"	43.30	S 02°36'38" E	N 04°57'09" E
C25	328.00	12°23'44"	70.96	S 04°57'09" W	N 17°20'54" E
C26	328.00	12°23'44"	70.96	S 17°20'54" W	N 29°44'38" E
C27	328.00	12°23'44"	70.96	S 29°44'38" W	N 42°08'22" E
C28	328.00	12°23'44"	70.96	S 42°08'22" W	N 54°32'06" E
C29	328.00	12°23'44"	70.96	S 54°32'06" W	N 66°55'50" E
C30	328.00	12°24'12"	71.01	S 66°55'50" W	N 79°20'02" E
C31	328.00	1°29'58"	8.58	S 80°50'00" W	N 79°20'02" E
C32	272.00	28°31'06"	135.39	S 49°31'44" W	N 21°00'38" E
C33	272.00	27°44'40"	131.71	S 77°16'24" W	N 49°31'44" E
C34	272.00	3°33'36"	16.90	S 80°50'00" W	N 77°16'24" E
C35	25.00	90°00'00"	39.27	N 09°10'00" W	N 80°50'00" E
C36	25.00	90°00'00"	39.27	S 09°10'00" E	N 80°50'00" E
C37	182.00	30°10'27"	95.85	N 09°10'00" W	S 21°00'27" W
C38	25.00	90°00'00"	39.27	N 21°00'27" E	N 68°59'33" W
C39	29.00	30°35'53"	15.49	S 68°59'33" E	N 38°23'40" W
C40	50.00	13°14'47"	11.56	N 38°23'40" W	S 51°38'26" E
C41	50.00	60°13'30"	52.56	S 68°08'04" W	S 51°38'26" E
C42	50.00	48°41'21"	42.49	S 19°26'43" W	N 68°08'04" E
C43	50.00	46°49'52"	40.87	S 27°23'10" E	N 19°26'43" E
C44	50.00	46°56'17"	40.96	S 74°19'27" E	N 27°23'10" W
C45	50.00	49°03'26"	42.81	S 74°19'27" E	S 56°37'07" W
C46	29.00	53°56'32"	27.30	S 56°37'07" W	S 69°26'21" E
C47	25.00	90°00'00"	39.27	N 68°59'33" W	S 21°00'27" W
C48	25.00	87°48'30"	38.31	N 21°00'27" E	N 71°11'03" W
C49	628.00	4°23'54"	48.21	N 71°11'03" W	S 75°34'57" E
C50	628.00	5°26'48"	59.70	N 75°34'57" E	S 81°01'45" E
C51	628.00	9°55'34"	108.80	N89°02'42"E	N81°01'45"E
C52	628.00	3°07'58"	34.34	S85°54'43"W	N89°02'42"E
C53	446.00	22°50'51"	177.85	S42°08'22"W	N64°59'13"E
C54	446.00	12°23'44"	96.49	S54°32'06"W	S42°08'22"W
C55	446.00	10°27'07"	81.36	N64°59'13"E	S54°32'06"W
C56	458.12	10°05'44"	80.72	N74°25'20"E	S64°19'36"W
C64	238.00	2°31'12"	10.47	N 09°10'00" W	S 06°38'48" E
C65	238.00	16°32'21"	68.70	N 09°53'33" E	S 06°38'48" E
C66	238.00	11°06'55"	46.17	S 09°53'33" W	S 21°00'27" W
C67	238.00	30°10'28"	125.34	S 21°00'27" W	N 09°10'00" W
C68	25.00	82°52'19"	36.16	S 21°00'27" W	N 61°51'51" W
C69	628.00	9°30'36"	104.24	N 61°51'51" W	S 52°21'15" E
C72	600.00	27°46'23"	290.84	S66°18'54"E	N85°54'43"E
C73	572.00	1°28'43"	14.76	S 87°23'26" W	N 85°54'43" E
C74	572.00	8°16'43"	82.65	N 84°19'51" W	N 87°23'26" E
C75	572.00	8°16'43"	82.65	N 76°03'08" W	S 84°19'51" E
C76	572.00	8°23'02"	83.70	N76°03'08"W	S67°40'06"E
C77	572.00	8°43'25"	87.09	S67°40'06"E	S58°56'41"E
C78	572.00	10°26'10"	104.19	N 48°30'31" W	S 58°56'41" E
C297	50.00	264°59'13"	231.25	N56°37'07"E	S38°23'40"E
C298	29.00	0°26'49"	0.23	N 69°26'21" W	S 68°59'33" E
C299	29.00	54°23'21"	27.53	S56°37'07"W	S68°59'33"E
C319	573.34	64°36'28"	646.51	N61°59'50"E	S02°36'38"E
C320	601.34	93°12'36"	978.27	S89°24'03"E	S02°36'38"E
C321	629.34	58°14'17"	639.69	N55°37'39"E	S02°36'38"E
C322	328.00	83°26'38"	477.69	S02°36'38"E	N80°50'00"E
C323	300.00	83°26'38"	436.91	S02°36'38"E	N80°50'00"E
C324	272.00	83°26'38"	396.13	S02°36'38"E	N80°50'00"E
C325	572.00	65°23'21"	652.80	S28°41'56"E	S85°54'43"W
C326	628.00	22°54'14"	251.04	S71°11'03"E	S85°54'43"W
C327	628.00	33°09'56"	363.52	S28°41'56"E	N61°51'51"W
C328	210.00	30°10'27"	110.59	N21°00'27"E	S09°10'00"E
C363	600.00	65°23'21"	684.76	S28°41'56"E	S85°54'43"W



7600 Morro Rd
Atascadero, CA 93422
ph (805)466-2445
info@dakoslandsurveys.com

RICE RANCH: VALLEY VIEW
TRACT 14,805 UNIT 3
Sheet 8 of 14
January 20, 2020
First American Title: 4001-5946690

NOTES

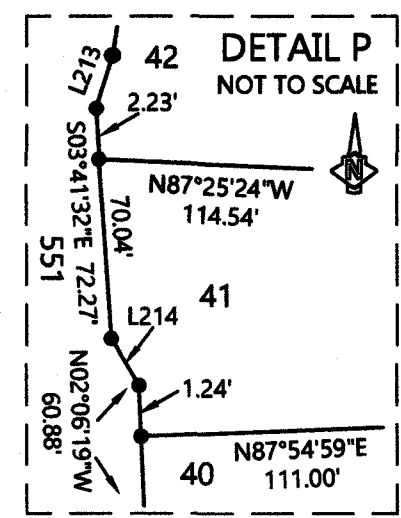
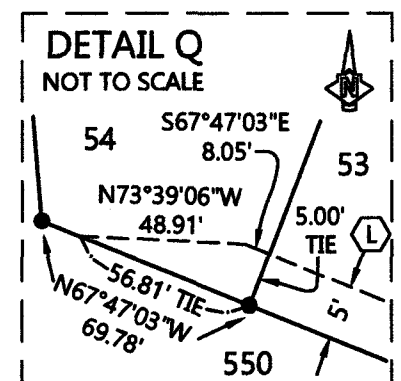
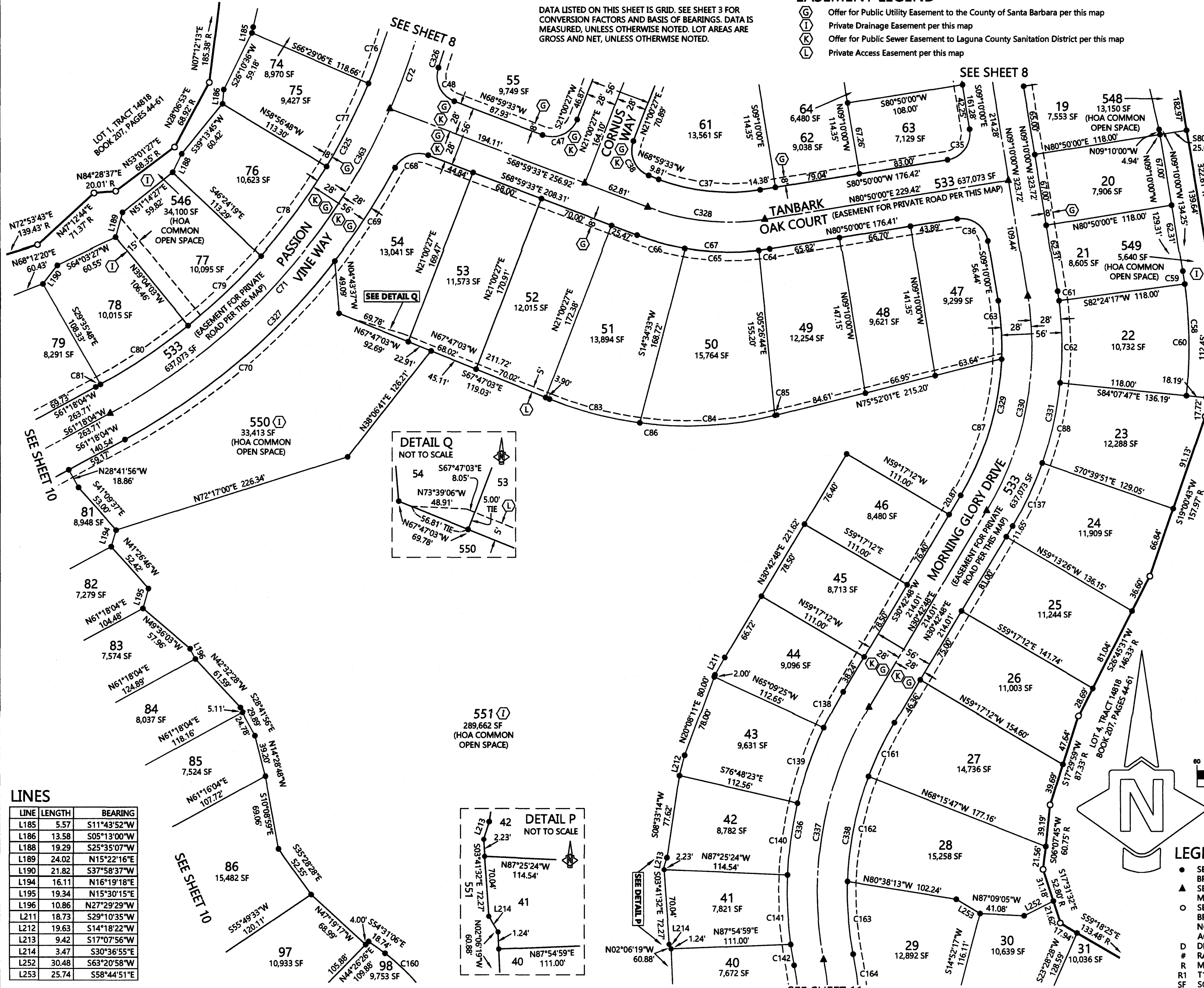
DATA LISTED ON THIS SHEET IS GRID. SEE SHEET 3 FOR CONVERSION FACTORS AND BASIS OF BEARINGS. DATA IS MEASURED, UNLESS OTHERWISE NOTED. LOT AREAS ARE GROSS AND NET, UNLESS OTHERWISE NOTED.

EASEMENT LEGEND

- (G) Offer for Public Utility Easement to the County of Santa Barbara per this map
- (K) Private Drainage Easement per this map
- (L) Offer for Public Sewer Easement to Laguna County Sanitation District per this map
- (I) Private Access Easement per this map

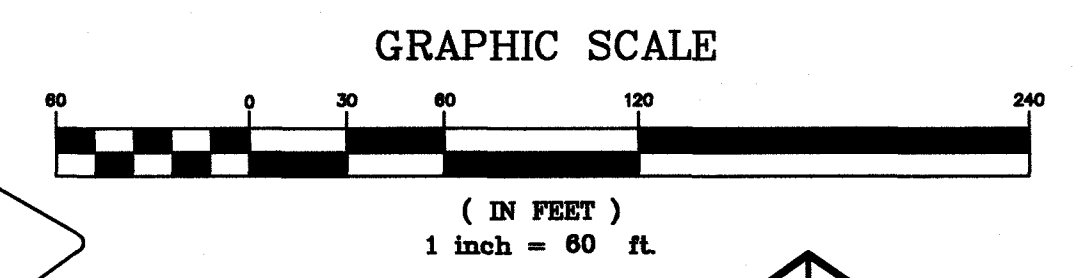
CURVES

CURVE	RADIUS	DELTA	LENGTH	RADIAL	RADIAL
C35	25.00	90°00'00"	39.27	N 09°10'00" W	N 80°50'00" E
C36	25.00	90°00'00"	39.27	S 09°10'00" E	N 80°50'00" W
C37	182.00	30°10'27"	95.85	N 09°10'00" W	S 21°00'27" W
C38	25.00	90°00'00"	39.27	N 21°00'27" E	N 68°59'33" W
C47	25.00	90°00'00"	39.27	N 68°59'33" W	S 21°00'27" W
C48	25.00	87°48'30"	38.31	N 21°00'27" E	N 71°11'03" W
C58	446.00	15°02'13"	117.05	S84°07'47"E	N 80°50'00" E
C59	446.00	1°34'17"	12.23	N 80°50'00" E	N82°24'17"E
C60	446.00	13°27'56"	104.82	S82°24'17"W	S84°07'47"E
C61	328.00	1°34'17"	8.99	S80°50'00"W	N82°24'17"E
C62	328.00	13°27'56"	77.09	N82°24'17"E	S84°07'47"E
C63	272.00	11°32'14"	54.77	S 80°50'00" W	S 87°37'46" E
C64	238.00	2°31'12"	10.47	N 09°10'00" W	N 09°10'00" W
C65	238.00	16°32'21"	68.70	N 09°53'33" E	S 06°38'48" E
C66	238.00	11°06'55"	46.17	S 09°53'33" W	S 21°00'27" W
C67	238.00	30°10'28"	125.34	S 21°00'27" W	N 09°10'00" W
C68	25.00	82°52'19"	36.16	S 21°00'27" W	N 61°51'51" W
C69	628.00	9°30'36"	104.24	N 61°51'51" W	S 22°21'15" E
C70	628.00	23°39'19"	259.28	N 52°21'15" W	S 28°41'56" E
C71	600.00	37°36'58"	393.92	N28°41'56"W	N66°18'54"W
C72	600.00	27°46'23"	290.84	S66°18'54"E	N85°54'43"E
C76	572.00	8°23'02"	83.70	N76°03'08"W	S67°40'06"E
C77	572.00	8°43'25"	87.09	S67°40'06"E	S58°56'41"E
C78	572.00	10°26'10"	104.19	N 48°30'31" W	S 58°56'41" E
C79	572.00	9°26'29"	94.25	N 39°04'03" W	S 48°30'31" E
C80	572.00	9°52'17"	98.55	N 29°11'46" W	S 39°04'03" E
C81	572.00	0°29'50"	4.96	N 28°41'56" W	S 29°11'46" E
C83	340.00	14°40'31"	87.09	N22°12'57"E	S07°32'26"W
C84	340.00	21°19'28"	126.54	S07°32'26"W	S13°47'02"E
C85	340.00	0°20'57"	2.07	S13°47'02"E	S14°07'59"E
C86	340.00	36°20'56"	215.70	N 22°12'57" E	S 14°07'59" E
C87	272.00	28°20'34"	134.55	N 87°37'46" W	S 59°17'12" E
C88	328.00	13°27'56"	77.09	S84°07'47"E	S70°39'51"E
C89	448.00	13°27'56"	105.29	N 69°17'56" W	S 82°45'52" E
C137	328.00	11°22'39"	65.13	S70°39'51"E	S59°17'12"E
C138	368.00	5°52'13"	37.70	S 65°09'25" E	N 59°17'12" W
C139	368.00	11°38'58"	74.82	S 76°48'23" E	N 65°09'25" W
C140	368.00	10°37'00"	68.19	S76°48'23"E	N87°25'24"W
C141	368.00	10°07'52"	65.07	N87°25'24"W	S82°26'45"W
C142	368.00	3°03'38"	19.66	S82°26'45"W	S79°23'06"W
C160	168.96	19°21'15"	57.07	S 56°10'05" W	N 36°48'50" E
C161	312.00	10°15'23"	55.85	S 59°17'12" E	N 69°32'36" W
C162	312.00	18°30'29"	100.78	S 69°32'36" E	N 88°03'04" W
C163	312.00	12°33'49"	68.41	N 79°23'06" E	N 88°03'04" W
C164	343.00	6°35'28"	39.46	S 85°58'35" W	N 79°23'06" E
C325	572.00	65°23'21"	652.80	S28°41'56"E	S85°54'43"W
C327	628.00	33°09'56"	363.52	S28°41'56"E	N61°51'51"W
C328	210.00	30°10'27"	110.59	N21°00'27"E	S09°10'00"E
C329	272.00	39°52'48"	189.32	S80°50'00"W	S59°17'12"E
C330	300.00	39°52'48"	208.81	S80°50'00"W	S59°17'12"E
C331	328.00	39°52'48"	228.30	S80°50'00"W	S59°17'12"E
C336	368.00	41°19'41"	265.45	S79°23'06"W	S59°17'12"E
C337	340.00	41°19'41"	245.25	S79°23'06"W	S59°17'12"E
C338	312.00	41°19'41"	225.04	S79°23'06"W	S59°17'12"E
C363	600.00	65°23'21"	684.76	S28°41'56"E	S85°54'43"W

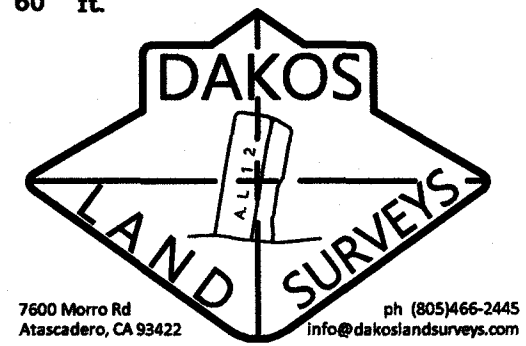


LINES

LINE	LENGTH	BEARING
L185	5.57	S11°43'52"W
L186	13.58	S05°13'00"W
L188	19.29	S25°35'07"W
L189	24.02	N15°22'16"E
L190	21.82	S37°58'37"W
L194	16.11	N16°19'18"E
L195	19.34	N15°30'15"E
L196	10.86	N27°29'29"W
L211	18.73	S29°10'35"W
L212	19.63	S14°18'22"W
L213	9.42	S17°07'56"W
L214	3.47	S30°36'55"E
L252	30.48	S63°20'58"W
L253	25.74	S58°44'51"E



- LEGEND**
- SET 1/2" GALVANIZED IRON PIPE WITH BRASS TAG STAMPED "L.S. 8769"
 - ▲ SET 2" BRASS CAP STAMPED "L.S. 8769" IN MONUMENT WELL
 - SEARCHED FOR 1/2" IRON PIPE WITH BRASS TAG MARKED "PLS 8310" PER R1, NOT FOUND, NOTHING SET (SEE R1 FOR ACTUAL SET MONUMENT DESCRIPTIONS)
 - D DELTA
 - # RADIAL BEARING
 - R MEASURED AND R1
 - R1 T14,818 BOOK 207, PAGES 44-61
 - SF SQUARE FEET



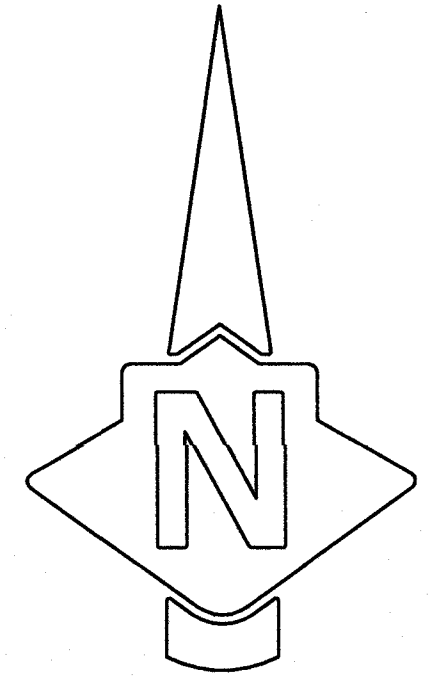
7600 Morro Rd
Atascadero, CA 93422
ph (805)466-2445
info@dakoslandsurveys.com

RICE RANCH: VALLEY VIEW
TRACT 14,805 UNIT 3
Sheet 9 of 14
January 20, 2020
First American Title: 4001-5946690

GRAPHIC SCALE



(IN FEET)
1 inch = 60 ft.



LEGEND

- SET 1/2" GALVANIZED IRON PIPE WITH BRASS TAG STAMPED "L.S. 8769"
- ▲ SET 2" BRASS CAP STAMPED "L.S. 8769" IN MONUMENT WELL
- SEARCHED FOR 1/2" IRON PIPE WITH BRASS TAG MARKED "PLS 8310" PER R1, NOT FOUND, NOTHING SET (SEE R1 FOR ACTUAL SET MONUMENT DESCRIPTIONS)
- D DELTA
- # RADIAL BEARING
- R MEASURED AND R1
- R1 T14,818 BOOK 207, PAGES 44-61
- SF SQUARE FEET

EASEMENT LEGEND

- (G) Offer for Public Utility Easement to the County of Santa Barbara per this map
- (I) Private Drainage Easement per this map
- (K) Offer for Public Sewer Easement to Laguna County Sanitation District per this map

NOTES

DATA LISTED ON THIS SHEET IS GRID. SEE SHEET 3 FOR CONVERSION FACTORS AND BASIS OF BEARINGS. DATA IS MEASURED, UNLESS OTHERWISE NOTED. LOT AREAS ARE GROSS AND NET, UNLESS OTHERWISE NOTED.

CURVES

CURVE	RADIUS	DELTA	LENGTH	RADIAL	RADIAL
C70	628.00	23°39'19"	259.28	N 52°21'15" W	S 28°41'56" E
C80	572.00	9°52'17"	98.55	N 29°11'46" W	S 39°04'03" E
C81	572.00	0°29'50"	4.96	N 28°41'56" W	S 29°11'46" E
C92	25.00	52°47'21"	23.03	S28°41'56"E	N81°29'17"W
C93	25.00	37°12'39"	16.23	N81°29'17"W	S61°18'04"W
C94	25.00	90°00'00"	39.26	S61°18'04"W	S28°41'56"E
C95	25.00	90°00'00"	39.27	S 61°18'04" W	N 28°41'56" W
C100	278.00	16°46'42"	81.41	S 28°41'56" E	N 45°28'38" W
C101	278.00	14°50'59"	72.05	S 60°19'36" E	N 45°28'38" W
C102	278.00	14°48'49"	71.88	S 75°08'26" E	N 60°19'36" W
C103	278.00	14°48'49"	71.88	S 89°57'15" E	N 75°08'26" W
C104	278.00	15°13'50"	73.90	S89°57'15"E	S74°48'55"W
C105	278.00	5°47'13"	28.08	S74°48'55"W	S69°01'42"W
C106	25.00	95°39'58"	41.74	N 69°01'42" E	S 26°38'16" E
C107	25.00	79°06'11"	34.51	S 52°27'56" W	N 26°38'16" W
C108	472.00	11°53'44"	97.99	S 64°21'39" W	N 52°27'56" E
C109	528.00	7°48'15"	71.92	S 55°11'15" W	N 62°59'30" E
C110	528.00	2°43'19"	25.08	S 52°27'56" W	N 55°11'15" E
C111	88.00	32°02'26"	49.21	N 84°30'21" E	S 52°27'56" W
C112	50.00	73°55'20"	64.51	S 11°20'30" W	N 85°15'51" E
C113	50.00	41°39'18"	36.35	S 30°18'48" E	N 11°20'30" E
C114	50.00	29°07'23"	25.42	S59°26'11"E	N30°18'48"W
C117	25.00	86°19'22"	37.67	N 69°01'42" E	N 24°38'56" W
C118	2021.00	0°59'28"	34.96	N 24°38'56" W	S 25°38'24" E
C119	2021.00	1°48'02"	63.51	N 27°26'26" W	S 25°38'24" E
C120	2021.00	0°13'22"	7.86	N 27°39'48" W	S 27°26'26" E
C121	88.00	12°02'36"	18.50	S27°39'48"E	N15°37'12"W
C122	88.00	20°45'19"	31.88	N15°37'12"W	N05°08'07"E
C123	50.00	43°36'52"	38.06	N05°08'07"E	S38°28'45"E
C124	50.00	34°30'50"	30.12	S38°28'45"E	S72°59'35"E
C125	50.00	53°46'03"	46.92	S72°59'35"E	N53°14'21"E
C126	50.00	24°44'12"	21.59	S 28°30'09" W	N 53°14'21" E
C127	88.00	30°57'18"	47.54	N 59°27'27" E	S 28°30'09" W
C128	88.00	1°50'37"	2.83	N 61°18'04" E	S 59°27'27" W
C129	222.00	12°52'16"	49.87	S 28°41'56" E	N 41°34'12" W
C130	222.00	22°22'15"	86.68	S 41°34'12" E	N 63°56'27" W
C131	222.00	31°50'15"	123.36	S 63°56'27" E	S84°13'18"W
C132	222.00	15°11'36"	58.87	S84°13'18"W	S69°01'42"W
C133	25.00	91°02'08"	39.72	N 27°39'48" W	N 61°18'04" E
C134	25.00	93°52'42"	40.96	N 24°51'00" W	S 69°01'42" W
C135	1965.00	1°38'24"	56.24	N 26°29'24" W	S 24°51'00" E
C136	1965.00	1°10'24"	40.24	N 26°29'24" W	S 27°39'48" E
C156	1190.00	4°20'07"	90.04	S 61°10'23" W	N 56°50'17" E
C157	1190.00	1°19'24"	27.48	S 56°50'17" W	N 55°30'53" E
C158	60.00	16°10'36"	16.94	N 55°30'53" E	S 71°41'29" W
C159	40.00	13°32'15"	9.45	S 71°41'29" W	N 58°09'14" E
C160	168.96	19°21'15"	57.07	S 56°10'05" W	N 36°48'50" E
C300	88.00	32°47'55"	50.37	N61°18'04"E	S28°30'09"W
C301	50.00	156°37'57"	136.69	S28°30'09"W	S05°08'07"W
C302	88.00	32°47'55"	50.38	N27°39'48"W	S05°08'07"W
C303	2021.00	3°00'52"	106.33	S24°38'56"E	N27°39'48"W
C304	1965.00	2°48'48"	96.49	S24°51'00"E	N27°39'48"W
C305	88.00	32°47'55"	50.37	N26°38'16"W	S59°26'11"E
C306	88.00	0°45'29"	1.16	N 85°15'51" E	S 84°30'21" W
C307	88.00	32°47'55"	50.37	S85°15'51"W	N52°27'56"E
C308	50.00	144°42'01"	126.28	N59°26'11"W	S85°15'51"W
C315	1190.00	13°08'38"	272.99	S 68°39'31" W	N 55°30'53" E
C325	572.00	65°23'21"	652.80	S28°41'56"E	S85°54'43"W
C327	628.00	33°09'56"	363.52	S28°41'56"E	N61°51'51"W
C332	278.00	82°16'22"	399.20	S69°01'42"W	S28°41'56"E
C333	250.00	82°16'22"	358.98	S69°01'42"W	S28°41'56"E
C334	222.00	82°16'22"	318.78	S69°01'42"W	S28°41'56"E
C335	1993.00	4°26'33"	154.53	N23°13'15"W	S27°39'48"E
C348	528.00	21°38'21"	199.42	N52°27'56"E	S74°06'17"W
C349	500.00	21°38'21"	188.84	N52°27'56"E	S74°06'17"W
C350	472.00	21°38'21"	178.26	N52°27'56"E	S74°06'17"W
C363	600.00	65°23'21"	684.76	S28°41'56"E	S85°54'43"W

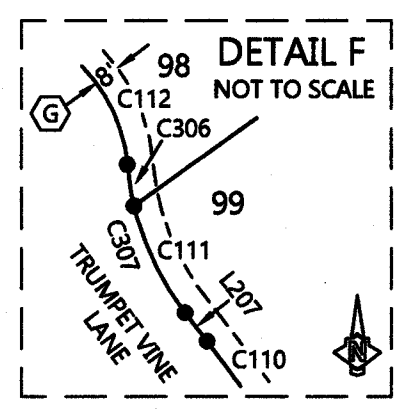
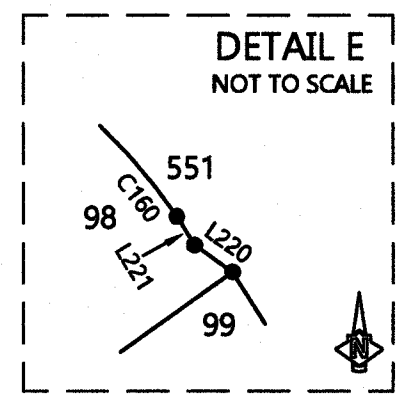
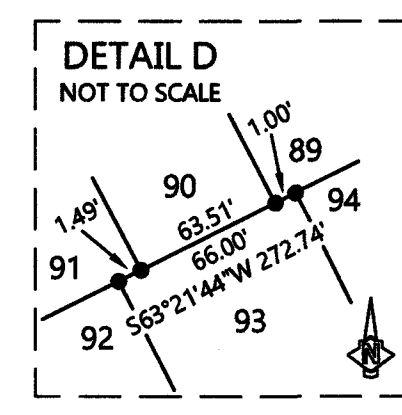
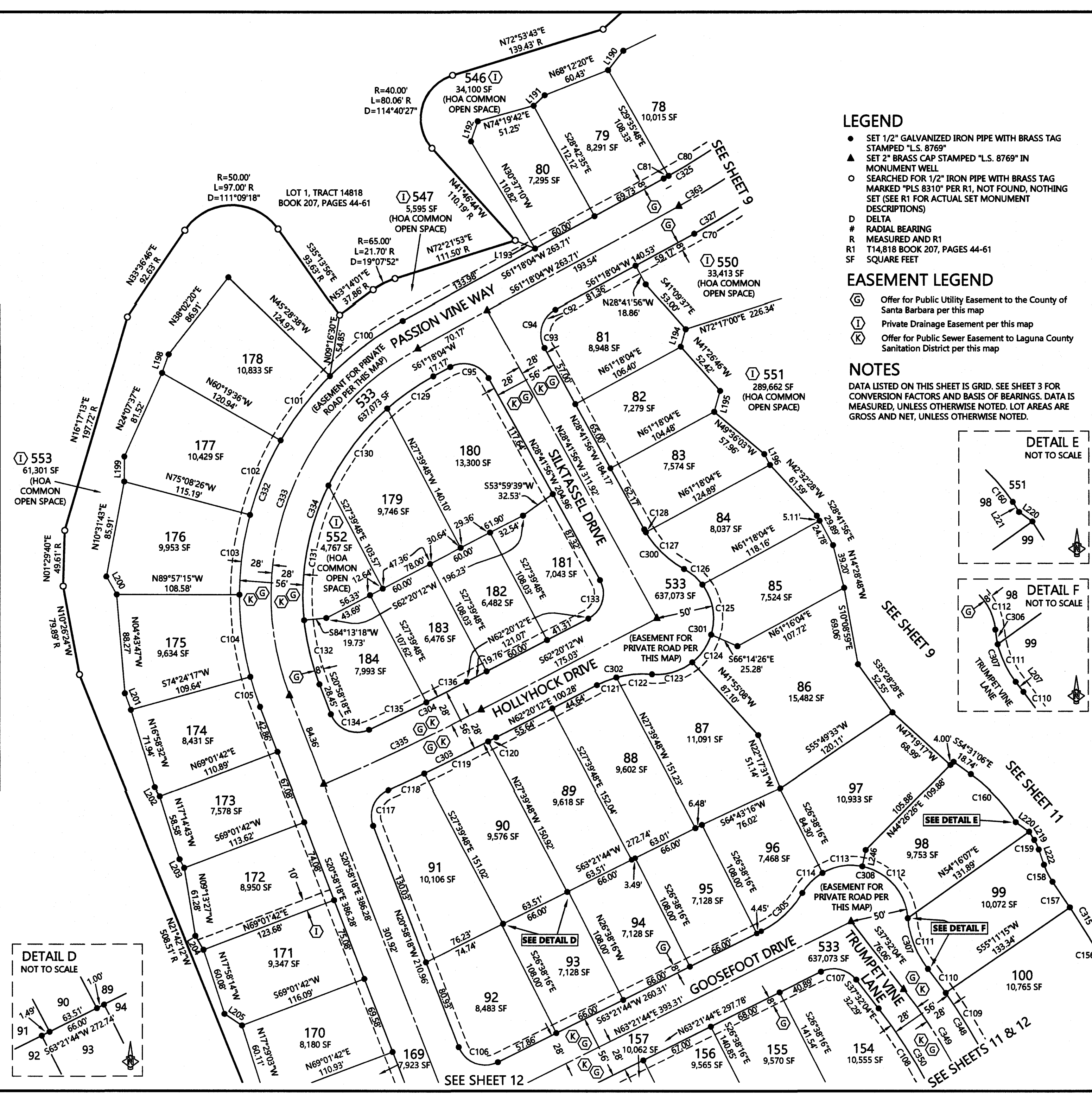
LINES

LINE	LENGTH	BEARING
L190	21.82	S37°58'37"W
L191	13.48	N46°19'17"E
L192	18.87	N18°06'44"E
L193	19.00	S67°44'19"E
L194	16.11	N16°19'18"E
L195	19.34	N15°30'15"E
L196	10.86	N27°29'29"W
L198	17.59	N19°08'36"E
L199	22.27	N00°14'27"E
L200	18.49	N29°40'36"W
L201	15.60	N20°16'18"W
L202	9.58	N32°12'59"W
L203	8.69	N28°04'35"W
L204	14.29	N30°43'37"W
L205	18.51	N56°24'41"W
L207	1.30	S37°32'04"E
L219	8.55	N31°50'46"W
L220	14.51	N54°28'46"W
L221	1.86	N31°38'34"W
L222	14.34	N18°18'31"W
L246	14.92	N11°56'11"E



7600 Morro Rd Atascadero, CA 93422 ph (805)466-2445 info@dacoslandsurveys.com

RICE RANCH: VALLEY VIEW
TRACT 14,805 UNIT 3
Sheet 10 of 14
January 20, 2020
First American Title: 4001-5946690



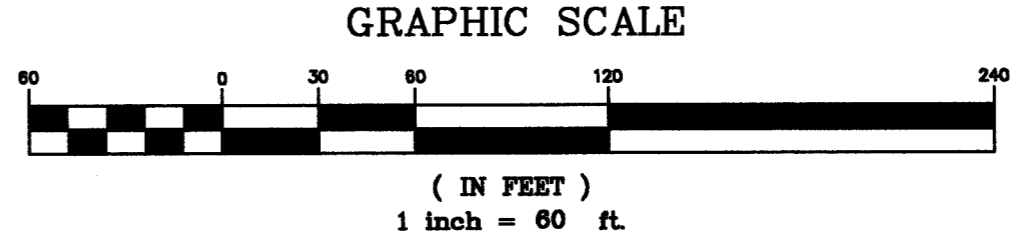
SEE SHEET 12

SEE SHEET 9

SEE SHEET 11

SEE SHEETS 11 & 12

NOTES
 DATA LISTED ON THIS SHEET IS GRID. SEE SHEET 3 FOR CONVERSION FACTORS AND BASIS OF BEARINGS. DATA IS MEASURED, UNLESS OTHERWISE NOTED. LOT AREAS ARE GROSS AND NET, UNLESS OTHERWISE NOTED.



CURVES

CURVE	RADIUS	DELTA	LENGTH	RADIAL	RADIAL
C106	25.00	95°39'58"	41.74	N 69°01'42" E	S 26°38'16" E
C107	25.00	79°06'11"	34.51	S 52°27'56" W	N 26°38'16" W
C108	472.00	11°53'44"	97.99	S 64°21'39" W	N 52°27'56" E
C109	528.00	7°48'15"	71.92	S 55°11'15" W	N 62°59'30" E
C110	528.00	2°43'19"	25.08	S 52°27'56" W	N 55°11'15" E
C111	88.00	32°02'26"	49.21	N 84°30'21" E	S 52°27'56" W
C112	50.00	73°55'20"	64.51	S 11°20'30" W	N 85°15'51" E
C113	50.00	41°39'18"	36.35	S 30°18'48" E	N 11°20'30" E
C114	50.00	29°07'23"	25.42	S 59°26'11" E	N 30°18'48" W
C115	88.00	30°29'18"	46.82	N 28°56'53" W	S 59°26'11" E
C116	88.00	2°18'37"	3.55	N 26°38'16" W	S 28°56'53" E
C150	733.00	0°58'44"	12.52	S 10°54'25" E	S 11°53'09" E
C151	25.00	85°59'25"	37.52	S 74°06'17" W	N 11°53'09" W
C152	528.00	3°57'33"	36.49	S 70°08'44" W	N 74°06'17" E
C153	528.00	7°09'14"	65.93	S 62°59'30" W	N 70°08'44" E
C190	472.00	9°44'37"	80.27	S 74°06'17" W	N 64°21'39" E
C191	25.00	85°59'26"	37.52	N 19°54'17" W	N 74°06'17" E
C192	705.00	4°59'18"	61.38	N 15°53'43" W	S 10°54'25" E
C193	841.53	5°28'26"	80.48	N 23°44'43" W	N 18°15'58" W
C194	841.53	5°37'25"	82.60	N 29°22'09" W	N 23°44'43" W
C195	841.53	5°42'35"	83.86	N 35°04'44" W	N 29°22'09" W
C196	841.53	5°28'26"	80.40	S 18°15'58" E	N 23°44'24" W
C197	841.53	4°37'53"	68.02	N 23°44'24" W	N 28°21'37" W
C198	841.53	4°34'27"	67.18	N 28°21'37" W	N 32°56'44" W
C199	841.53	4°36'54"	67.78	N 32°56'44" W	N 37°33'38" W
C200	841.53	6°31'12"	95.76	S 41°35'56" E	N 35°04'44" W
C201	841.53	4°02'18"	59.31	N 37°33'38" W	N 41°35'56" W
C202	25.00	91°20'19"	39.85	N 62°01'25" E	N 26°38'16" W
C203	562.00	14°50'04"	145.51	N 47°11'22" E	S 62°01'25" W
C204	562.00	1°13'48"	12.06	N 47°11'22" E	S 45°57'34" W
C205	618.00	1°01'03"	10.98	N 68°00'39" E	S 69°01'42" W
C206	618.00	7°16'02"	78.38	N 68°00'39" E	S 60°44'37" W
C207	618.00	7°30'07"	80.92	S 60°44'37" W	N 53°14'30" E
C209	25.00	84°38'02"	36.93	S 53°14'30" W	S 42°07'28" E
C210	328.15	7°39'59"	43.91	S 42°07'28" E	N 49°47'27" W
C211	328.15	13°21'36"	76.52	N 49°47'27" W	N 63°09'03" W
C212	328.15	14°07'50"	80.93	N 63°09'03" W	N 77°16'52" W
C213	328.15	11°58'30"	68.59	N 77°16'52" W	N 89°15'22" W
C214	328.15	3°29'39"	20.01	S 89°15'22" E	S 87°14'59" W
C215	328.15	9°40'57"	55.46	N 87°14'59" E	S 77°34'02" W
C217	29.00	19°02'54"	9.64	S 77°34'02" W	S 83°23'04" E
C218	50.00	11°27'35"	10.00	S 83°23'04" E	S 85°09'21" W
C219	50.00	49°53'46"	43.55	N 35°15'35" E	S 85°09'21" W
C220	50.00	82°11'25"	71.73	N 46°55'50" W	S 35°15'35" W
C221	50.00	112°44'34"	98.39	N 46°55'50" W	N 20°19'36" E
C223	272.15	1°35'01"	7.52	N 87°11'29" E	S 88°46'30" W
C224	272.15	28°54'05"	137.28	S 88°46'30" W	N 62°19'24" W
C225	272.15	19°49'05"	94.13	S 42°30'19" E	N 62°19'24" W
C226	25.00	88°27'53"	38.60	N 45°57'34" E	S 42°30'19" E
C227	29.00	66°51'52"	33.84	N 87°11'29" E	S 20°19'36" W
C228	25.00	85°16'17"	37.20	N 48°46'09" W	N 45°57'34" E
C229	25.00	94°43'43"	41.33	S 45°57'34" W	N 48°46'09" W
C246	590.00	1°44'04"	17.86	N 69°01'42" E	S 67°17'38" W
C247	590.00	18°46'43"	193.37	N 67°17'38" E	S 48°30'55" W
C248	590.00	2°33'22"	26.32	N 48°30'55" E	S 45°57'34" W
C249	25.00	85°24'19"	37.26	S 39°26'45" E	N 45°57'34" E
C250	733.00	4°22'02"	55.87	S 39°26'45" E	N 35°04'44" W
C251	733.00	5°42'35"	73.05	N 35°04'44" W	N 29°22'09" W
C252	733.00	5°37'25"	71.95	S 23°44'43" E	N 29°22'09" W
C253	733.00	3°50'26"	49.13	S 23°44'43" E	N 19°54'17" W

CURVES CONTINUED

CURVE	RADIUS	DELTA	LENGTH	RADIAL	RADIAL
C254	705.00	27°31'04"	338.59	N 43°24'47" W	S 15°53'43" E
C255	478.00	3°45'45"	31.39	N 14°40'11" W	N 10°54'25" W
C256	677.00	4°21'41"	51.53	N 15°16'06" W	N 10°54'25" W
C257	677.00	8°28'09"	100.07	N 15°16'06" W	N 23°44'15" W
C258	677.00	8°27'58"	100.03	N 23°44'15" W	N 32°12'12" W
C259	677.00	6°29'37"	76.73	N 32°12'12" W	S 38°41'49" E
C260	25.00	95°20'38"	41.60	N 45°57'34" E	N 38°41'48" W
C305	88.00	32°47'55"	50.37	N 26°38'16" W	S 59°26'11" E
C307	88.00	32°47'55"	50.37	S 85°15'51" W	N 52°27'56" E
C308	50.00	144°42'01"	126.28	N 59°26'11" W	S 85°15'51" W
C310	50.00	256°17'20"	223.67	N 83°23'04" W	S 20°19'36" W
C316	705.00	32°30'22"	399.97	S 43°24'47" E	N 10°54'25" W
C345	422.00	26°44'15"	196.93	S 10°54'25" E	N 37°38'40" W
C346	450.00	26°44'15"	210.00	S 10°54'25" E	N 37°38'40" W
C347	478.00	26°44'15"	223.06	S 10°54'25" E	N 37°38'40" W
C348	528.00	21°38'21"	199.42	N 52°27'56" E	S 74°06'17" W
C349	500.00	21°38'21"	188.84	N 52°27'56" E	S 74°06'17" W
C350	472.00	21°38'21"	178.26	N 52°27'56" E	S 74°06'17" W
C351	733.00	19°32'28"	250.00	N 39°26'45" W	S 19°54'17" E
C352	677.00	27°47'25"	328.36	N 38°41'49" W	S 10°54'25" E
C353	562.00	16°03'52"	157.57	N 62°01'25" E	S 45°57'34" W
C354	590.00	23°04'09"	237.55	N 69°01'42" E	S 45°57'34" W
C355	618.00	15°47'12"	170.28	N 69°01'42" E	S 53°14'30" W
C356	328.15	60°18'31"	345.42	S 42°07'28" E	S 77°34'02" W
C357	300.15	66°09'48"	346.61	S 72°21'07" W	S 41°29'05" E
C358	272.15	50°18'11"	238.93	S 87°11'29" W	N 42°30'19" W

EASEMENT LEGEND

- (A) Easement dedicated to the County of Santa Barbara for private fire access (private secondary access roadway) purposes, to be open and unobstructed, over Lots 2, and 4 of T14,818 for the benefit of Lot 10 of T14,818, and also for public trail purposes per R1.
- (B) Easement for private ingress and egress purposes over Lots 2 and 4 of T14,818 for the benefit of Lot 10 of T14,818 per R1.
- (G) Offer for Public Utility Easement to the County of Santa Barbara per this map.
- (I) Private Drainage Easement per this map.
- (K) Offer for Public Sewer Easement to Laguna County Sanitation District per this map.

LEGEND

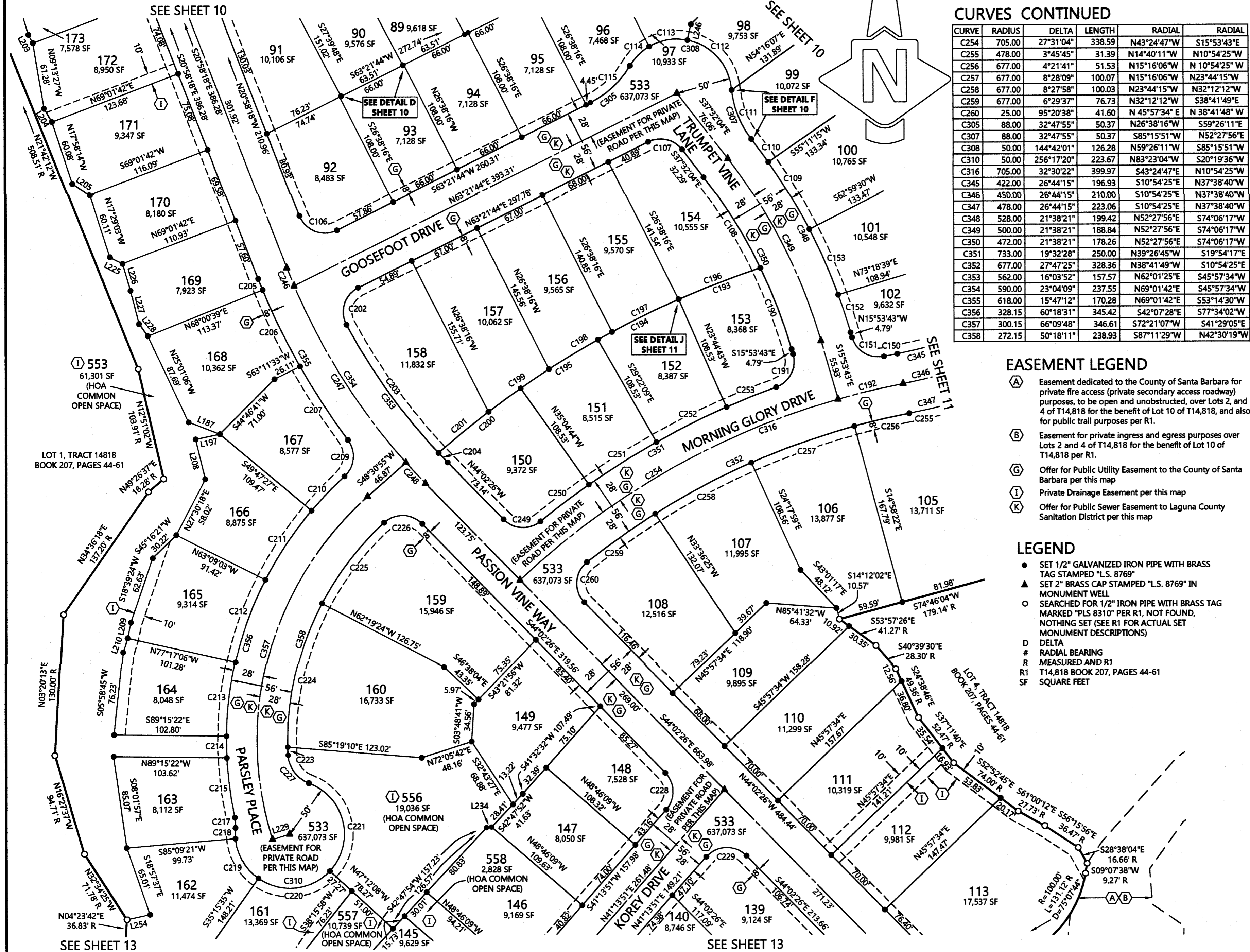
- SET 1/2" GALVANIZED IRON PIPE WITH BRASS TAG STAMPED "L.S. 8769"
- ▲ SET 2" BRASS CAP STAMPED "L.S. 8769" IN MONUMENT WELL
- SEARCHED FOR 1/2" IRON PIPE WITH BRASS TAG MARKED "PLS 8310" PER R1, NOT FOUND, NOTHING SET (SEE R1 FOR ACTUAL SET MONUMENT DESCRIPTIONS)
- D DELTA
- # RADIAL BEARING
- R MEASURED AND R1
- T14,818 BOOK 207, PAGES 44-61
- SF SQUARE FEET

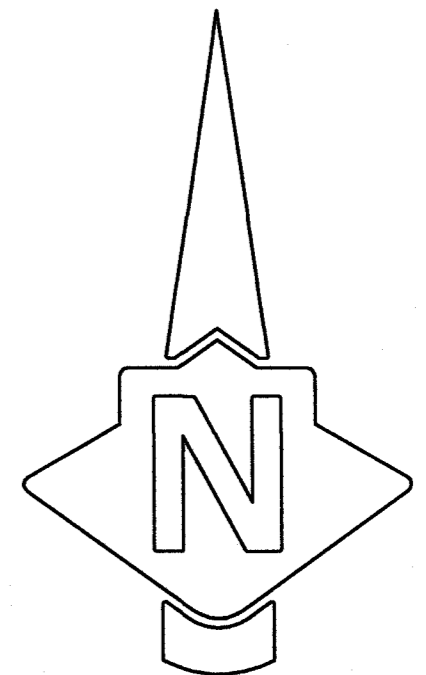
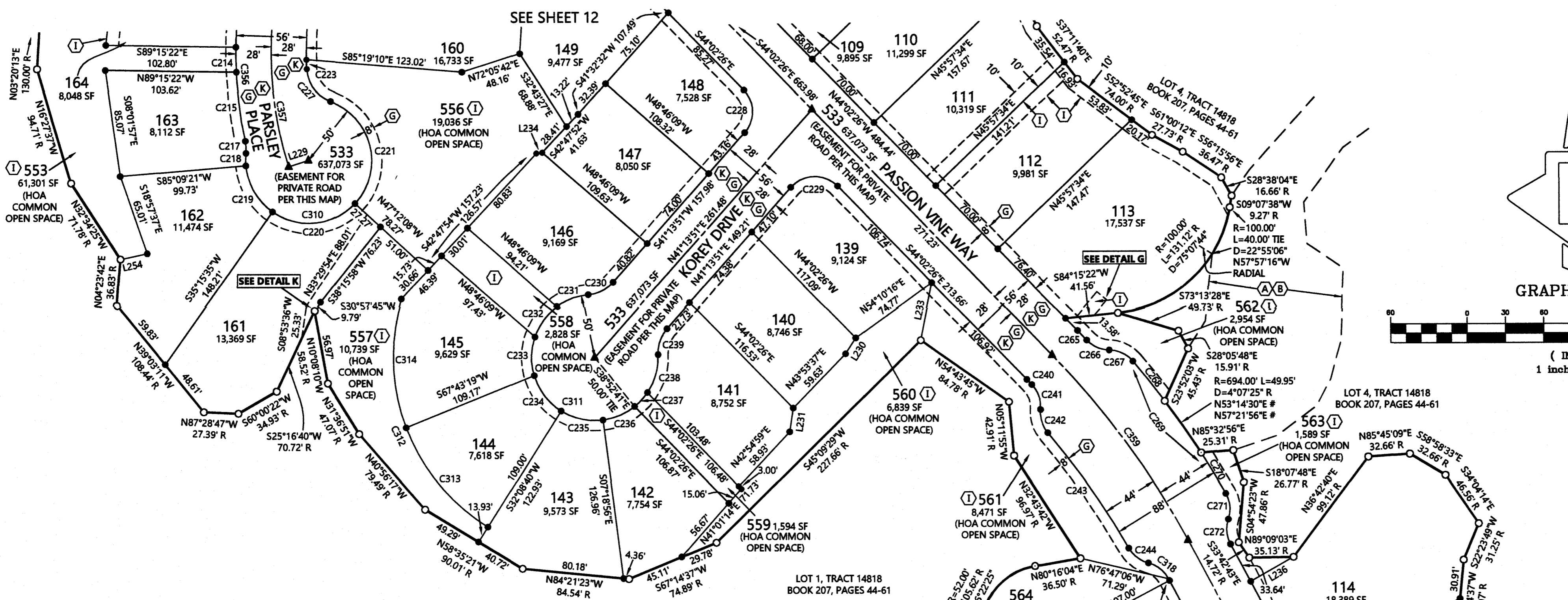
LINES

LINE	LENGTH	BEARING
L187	30.60	N 69°08'47" W
L197	22.70	N 77°49'54" E
L203	8.69	N 28°04'35" W
L204	14.29	N 30°43'37" W
L205	18.51	N 56°24'41" W
L208	37.83	N 13°32'19" W
L209	14.68	S 12°00'42" W
L210	13.75	S 17°14'31" W
L225	13.02	N 63°34'47" W
L226	26.00	N 16°18'24" W
L227	31.50	N 14°11'57" W
L228	13.85	N 35°37'14" W
L229	16.50	N 72°21'07" E
L234	4.68	S 82°35'25" W
L246	14.92	N 11°56'11" E
L254	21.70	S 77°56'57" W



RICE RANCH: VALLEY VIEW
 TRACT 14,805 UNIT 3
 Sheet 12 of 14
 January 20, 2020
 First American Title: 4001-5946690





GRAPHIC SCALE
(IN FEET)
1 inch = 60 ft.

CURVES

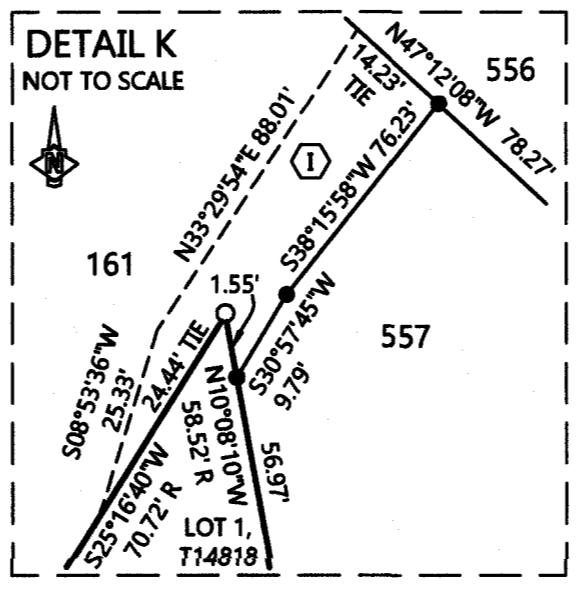
CURVE	RADIUS	DELTA	LENGTH	RADIAL	RADIAL
C214	328.15	3°29'39"	20.01	S 89°15'22" E	S 87°14'59" W
C215	328.15	9°40'57"	55.46	N 87°14'59" E	S 77°34'02" W
C217	29.00	19°02'54"	9.64	S 77°34'02" W	S 83°23'04" E
C218	50.00	11°27'35"	10.00	S 83°23'04" E	S 85°09'21" W
C219	50.00	49°53'46"	43.55	N 35°15'35" E	S 85°09'21" W
C220	50.00	82°11'25"	71.73	N 46°55'50" W	S 35°15'35" W
C221	50.00	112°44'34"	98.39	N46°55'50" W	N20°19'36" E
C223	272.15	1°35'01"	7.52	N87°11'29" E	S88°46'30" W
C227	29.00	66°51'52"	33.84	N87°11'29" E	S20°19'36" W
C228	25.00	85°16'17"	37.20	N 48°46'09" W	N 45°57'34" E
C229	25.00	94°43'43"	41.33	S 45°57'34" W	N 48°46'09" W
C230	29.00	43°49'12"	22.18	N 04°56'57" W	S 48°46'09" E
C231	50.00	30°52'26"	26.94	S 35°49'23" E	N 04°56'57" W
C232	50.00	35°01'40"	30.57	S 70°51'03" E	N 35°49'23" W
C233	50.00	35°41'18"	31.15	N 73°27'38" E	N 70°51'03" W
C234	50.00	41°18'58"	36.06	N 32°08'40" E	S 73°27'38" W
C235	50.00	39°27'36"	34.44	N 07°18'56" W	S 32°08'40" W
C236	50.00	31°33'46"	27.55	N 38°52'41" W	S 07°18'56" E
C237	50.00	17°17'06"	15.08	N 56°09'47" W	S 38°52'41" E
C238	50.00	36°25'34"	31.79	S 87°24'39" W	S 56°09'47" E
C239	29.00	43°49'12"	22.18	S 48°46'09" E	S 87°24'39" W
C240	622.00	0°31'34"	5.71	S 45°57'34" W	N 46°29'08" E
C241	25.00	48°53'29"	21.33	S 46°29'08" W	S 84°37'23" E
C242	25.00	45°28'07"	19.84	S 84°37'23" E	S 49°54'30" W
C243	606.00	10°34'40"	111.88	S 49°54'30" W	N 60°29'10" E
C244	25.00	45°57'46"	20.06	N 60°29'10" E	S 14°31'23" W
C265	678.00	0°53'09"	10.48	S 45°57'34" W	N 46°50'43" E
C266	25.00	45°38'15"	19.91	N 46°50'43" E	S 01°12'27" W
C267	25.00	48°42'03"	21.25	S 01°12'27" W	N 49°54'30" E
C268	694.00	3°20'01"	40.38	S 49°54'30" W	N 53°14'30" E
C269	694.00	10°34'40"	128.13	N49°54'30" E	N60°29'10" E
C270	694.00	3°07'14"	37.80	S 60°29'10" W	N 57°21'56" E
C271	25.00	48°19'11"	21.09	N 71°11'39" W	N 60°29'09" E
C272	25.00	46°45'48"	20.40	N 62°02'32" E	N 71°11'40" W
C273	1628.00	1°43'18"	48.92	N 60°19'14" E	S 62°02'32" W
C274	1628.00	2°27'48"	69.99	N 57°51'27" E	S 60°19'14" W

LINES

LINE	LENGTH	BEARING
L217	10.04	N33°05'10" W
L218	10.53	N45°00'18" W
L229	16.50	N72°21'07" E
L230	14.94	N32°43'10" E
L231	19.04	N08°26'34" E
L232	10.59	N47°23'14" W
L233	46.41	S11°55'53" W
L234	4.68	S82°35'25" W
L236	39.12	S60°20'39" W
L237	10.99	N43°42'51" W
L254	21.70	S77°56'57" W

CURVES CONTINUED

CURVE	RADIUS	DELTA	LENGTH	RADIAL	RADIAL
C295	1572.00	2°45'06"	75.49	N 60°58'00" E	S 58°12'54" W
C296	1572.00	1°04'32"	29.51	N 62°02'32" E	S 60°58'00" W
C310	50.00	256°17'20"	223.67	N83°23'04" W	S20°19'36" W
C311	50.00	267°38'24"	233.57	S04°56'57" E	N87°24'39" E
C312	159.00	74°53'25"	207.83	S72°57'55" E	S32°08'40" W
C313	159.00	37°22'46"	103.73	S32°08'40" W	S69°31'26" W
C314	159.00	37°30'39"	104.10	S69°31'26" W	S72°57'55" E
C318	25.00	47°31'08"	20.73	S14°31'23" W	N62°02'32" E
C356	328.15	60°18'31"	345.42	S42°07'28" E	S77°34'02" W
C357	300.15	66°09'48"	346.61	S72°21'07" W	S41°29'05" E
C359	650.00	16°04'58"	182.45	N45°57'34" E	S62°02'32" W
C360	1572.00	18°23'26"	504.58	N62°02'32" E	S43°39'06" W
C361	1600.00	18°23'26"	513.56	N62°02'32" E	S43°39'06" W
C362	1628.00	18°23'26"	522.55	N62°02'32" E	S43°39'06" W



NOTES

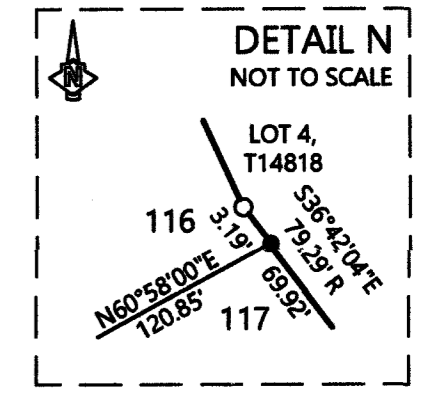
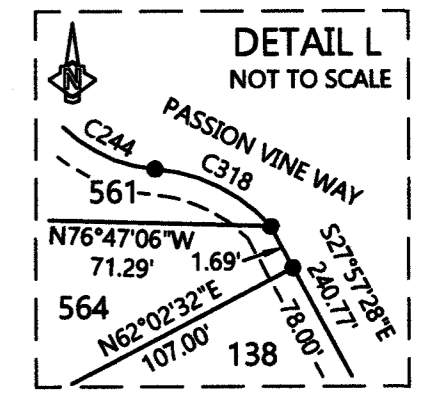
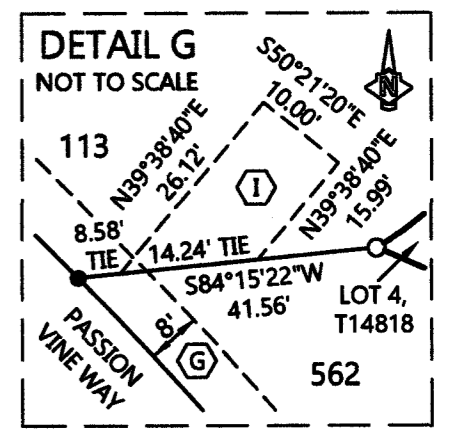
DATA LISTED ON THIS SHEET IS GRID. SEE SHEET 3 FOR CONVERSION FACTORS AND BASIS OF BEARINGS. DATA IS MEASURED, UNLESS OTHERWISE NOTED. LOT AREAS ARE GROSS AND NET, UNLESS OTHERWISE NOTED.

EASEMENT LEGEND

- (A) Easement dedicated to the County of Santa Barbara for private fire access (private secondary access roadway) purposes, to be open and unobstructed, over Lots 2, and 4 of T14,818 for the benefit of Lot 10 of T14,818, and also for public trail purposes per R1.
- (B) Easement for private ingress and egress purposes over Lots 2 and 4 of T14,818 for the benefit of Lot 10 of T14,818 per R1.
- (G) Offer for Public Utility Easement to the County of Santa Barbara per this map
- (I) Private Drainage Easement per this map
- (K) Offer for Public Sewer Easement to Laguna County Sanitation District per this map

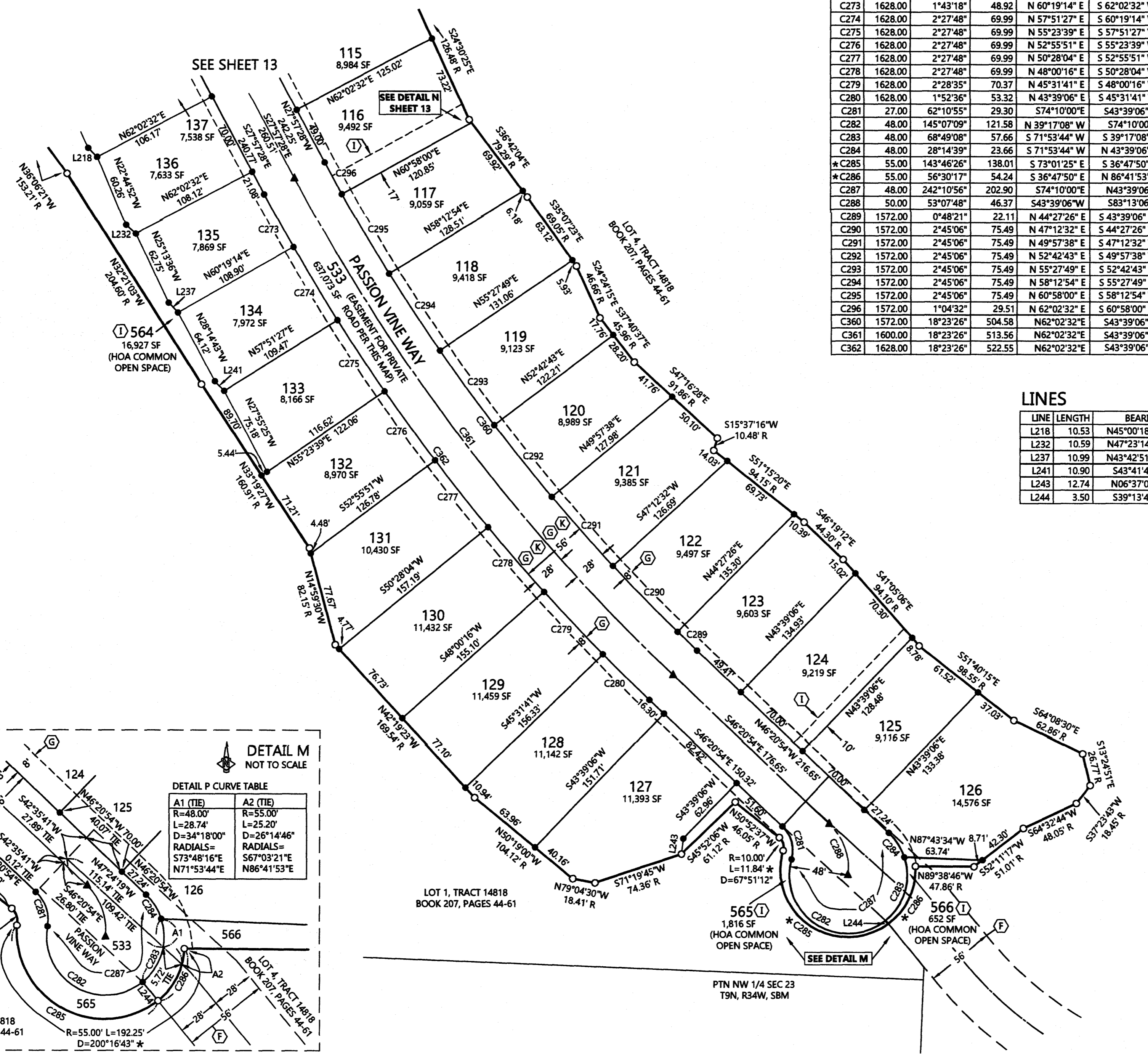
LEGEND

- SET 1/2" GALVANIZED IRON PIPE WITH BRASS TAG STAMPED "L.S. 8769"
- ▲ SET 2" BRASS CAP STAMPED "L.S. 8769" IN MONUMENT WELL
- SEARCHED FOR 1/2" IRON PIPE WITH BRASS TAG MARKED "PLS 8310" PER R1, NOT FOUND, NOTHING SET (SEE R1 FOR ACTUAL SET MONUMENT DESCRIPTIONS)
- D DELTA
- # RADIAL BEARING, MEASURED AND CALCULATED FROM R1
- R MEASURED AND R1
- R1 T14,818 BOOK 207, PAGES 44-61
- SF SQUARE FEET



7600 Morro Rd
Atascadero, CA 93422
ph (805)466-2445
info@dakoslandsurveys.com

RICE RANCH: VALLEY VIEW
TRACT 14,805 UNIT 3
Sheet 13 of 14
January 20, 2020
First American Title: 4001-5946690

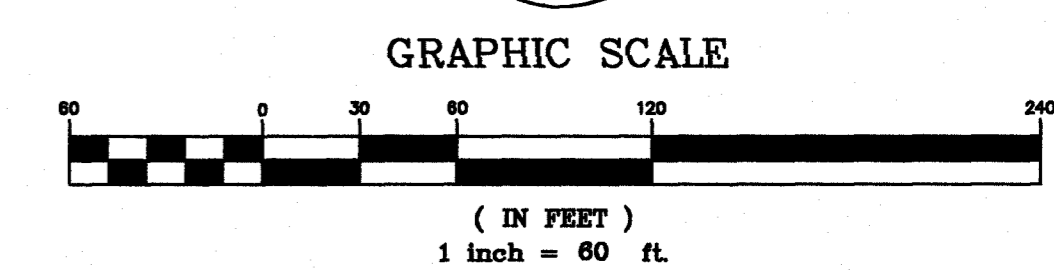
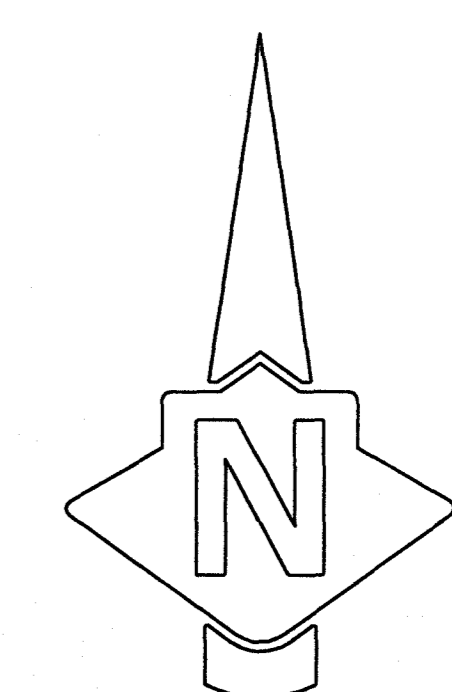


CURVES

CURVE	RADIUS	DELTA	LENGTH	RADIAL	RADIAL
C273	1628.00	1°43'18"	48.92	N 60°19'14" E	S 62°02'32" W
C274	1628.00	2°27'48"	69.99	N 57°51'27" E	S 60°19'14" W
C275	1628.00	2°27'48"	69.99	N 55°23'39" E	S 57°51'27" W
C276	1628.00	2°27'48"	69.99	N 52°55'51" E	S 55°23'39" W
C277	1628.00	2°27'48"	69.99	N 50°28'04" E	S 52°55'51" W
C278	1628.00	2°27'48"	69.99	N 48°00'16" E	S 50°28'04" W
C279	1628.00	2°28'35"	70.37	N 45°31'41" E	S 48°00'16" W
C280	1628.00	1°52'36"	53.32	N 43°39'06" E	S 45°31'41" W
C281	27.00	62°10'55"	29.30	S74°10'00"E	S43°39'06"W
C282	48.00	145°07'09"	121.58	N 39°17'08" W	S74°10'00"E
C283	48.00	68°49'08"	57.66	S 71°53'44" W	S 39°17'08" E
C284	48.00	28°14'39"	23.66	S 71°53'44" W	N 43°39'06" E
*C285	55.00	143°46'26"	138.01	S 73°01'25" E	S 36°47'50" E
*C286	55.00	56°30'17"	54.24	S 36°47'50" E	N 86°41'53" E
C287	48.00	242°10'56"	202.90	S74°10'00"E	N43°39'06"E
C288	50.00	53°07'48"	46.37	S43°39'06"W	S83°13'06"E
C289	1572.00	0°48'21"	22.11	N 44°27'26" E	S 43°39'06" W
C290	1572.00	2°45'06"	75.49	N 47°12'32" E	S 44°27'26" W
C291	1572.00	2°45'06"	75.49	N 49°57'38" E	S 47°12'32" W
C292	1572.00	2°45'06"	75.49	N 52°42'43" E	S 49°57'38" W
C293	1572.00	2°45'06"	75.49	N 55°27'49" E	S 52°42'43" W
C294	1572.00	2°45'06"	75.49	N 58°12'54" E	S 55°27'49" W
C295	1572.00	2°45'06"	75.49	N 60°58'00" E	S 58°12'54" W
C296	1572.00	1°04'32"	29.51	N 62°02'32" E	S 60°58'00" W
C360	1572.00	18°23'26"	504.58	N62°02'32"E	S43°39'06"W
C361	1600.00	18°23'26"	513.56	N62°02'32"E	S43°39'06"W
C362	1628.00	18°23'26"	522.55	N62°02'32"E	S43°39'06"W

LINES

LINE	LENGTH	BEARING
L218	10.53	N45°00'18"W
L232	10.59	N47°23'14"W
L237	10.99	N43°42'51"W
L241	10.90	S43°41'45"E
L243	12.74	N06°37'03"E
L244	3.50	S39°13'49"E



EASEMENT LEGEND

(F) The terms and provisions contained in the document entitled "Grant of Easements and Agreement", by and between McCadden Development, LLC, a Delaware limited liability company and Rice Ranch Ventures, LLC, a Delaware limited liability company recorded November 2, 2006 as Instrument No. 2006-0086046 and 2006-0086047 of Official Records.
 In Favor of: Rice Ranch Ventures, LLC, a Delaware limited liability company For: non-exclusive emergency vehicle ingress and egress access easements
 The terms and provisions contained in the document entitled "Declaration of Easements and Covenant Agreement" recorded April 17, 2009 as Instrument No. 2009-0021261 of Official Records.
 In Favor of: Rice Ranch Ventures, LLC, a Delaware limited liability company For: rights to install and maintain underground utility lines, ingress and egress

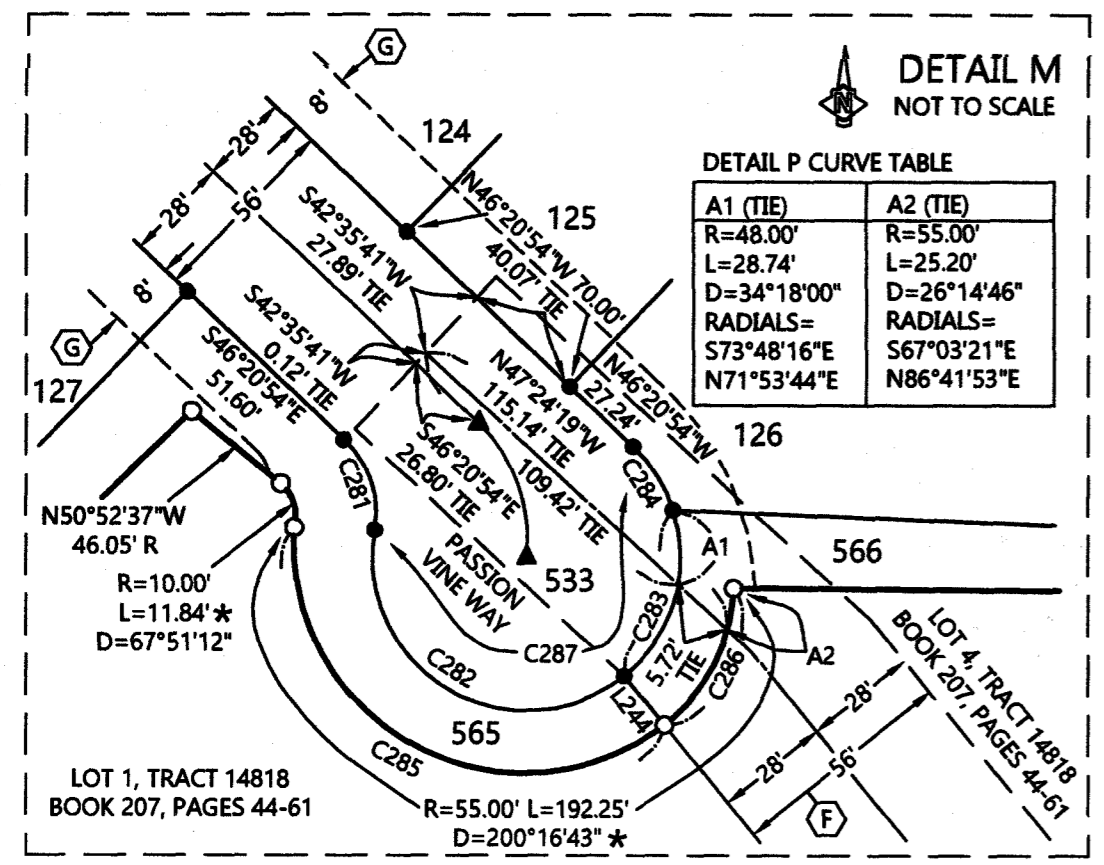
(G) Offer for Public Utility Easement to the County of Santa Barbara per this map
 (I) Private Drainage Easement per this map
 (K) Offer for Public Sewer Easement to Laguna County Sanitation District per this map

LEGEND

- SET 1/2" GALVANIZED IRON PIPE WITH BRASS TAG STAMPED "L.S. 8769"
- ▲ SET 2" BRASS CAP STAMPED "L.S. 8769" IN MONUMENT WELL
- SEARCHED FOR 1/2" IRON PIPE WITH BRASS TAG MARKED "PLS 8310" PER R1, NOT FOUND, NOTHING SET (SEE R1 FOR ACTUAL SET MONUMENT DESCRIPTIONS)
- D DELTA
- # RADIAL BEARING
- R MEASURED AND R1
- R1 T14,818 BOOK 207, PAGES 44-61
- SF SQUARE FEET
- * MEASURED AND RECORD PER CERTIFICATE OF CORRECTION, INSTRUMENT # 2019-0037802.

NOTES

DATA LISTED ON THIS SHEET IS GRID. SEE SHEET 3 FOR CONVERSION FACTORS AND BASIS OF BEARINGS. DATA IS MEASURED, UNLESS OTHERWISE NOTED. LOT AREAS ARE GROSS AND NET, UNLESS OTHERWISE NOTED.



RICE RANCH: VALLEY VIEW
 TRACT 14,805 UNIT 3
 Sheet 14 of 14
 January 20, 2020
 First American Title: 4001-5946690