

# Recommendation #3

## Onshore Oil Management

September 23, 2008

# Program Management Information

- Objectives:
  - Single dataset for facilities, operators and locations
  - Electronic tracking of all incidents, inspections and permits
  - Summary and detail reporting
  - Accurate mapping of facilities and incidents
  - Programming of future work



# Data for Decision Making

Date: Aug 11, 2008  
User: Aviana

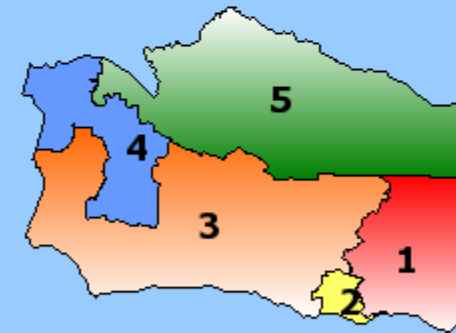
Select a Supervisorial District and click on a Functional Area ...



Select a Supervisorial District

- ALL
- District 1
- District 2
- District 3
- District 4
- District 5

[Deselect](#)



# Public Safety Menu Page



## Public Safety List of Reports

[Main](#)

[Law & Justice](#)

[Finance & Human Capital](#)

[Outside Data](#)

[Health & Social Services](#)

[Land Use](#)

Data as of: Sep 11, 2008  
Username: Administrator



- [Report 1: Code Violations](#)
- [Report 2: Code Violations Detail](#)
- [Report 3: Wildfires](#)
- [Onshore Oil Management Menu](#)
- Report 5.....
- Report 6.....
- Report 7.....
- Report 8.....
- Report 9.....
- Report 10.....

### Select a Supervisorial District

- ALL
- District 1
- District 2
- District 3
- District 4
- District 5

[Deselect](#)



# Onshore Oil Management Menu Page



## Onshore Oil Management List of Reports

[Main](#)

[Law & Justice](#)

[Finance & Human Capital](#)

[Outside Data](#)

[Health & Social Services](#)

[Land Use](#)

Data as of: Sept. 23, 2008

Username: Administrator



**Onshore Oil  
Management  
Section**

- [Report 1: Oil Spill Main Page](#)
- [Report 2: Oil Facility Health Check](#)
- [Report 3: Oil Facility Detail](#)
- [Report 4: Oil Facility Individual Records](#)
- [Report 5: Oil Facility Largest Violators](#)
- Report 6.....
- Report 7.....
- Report 8.....
- Report 9.....
- Report 10.....

### Select a Supervisorial District

- ALL
- District 1
- District 2
- District 3
- District 4
- District 5

[Deselect](#)



# Oil Spills

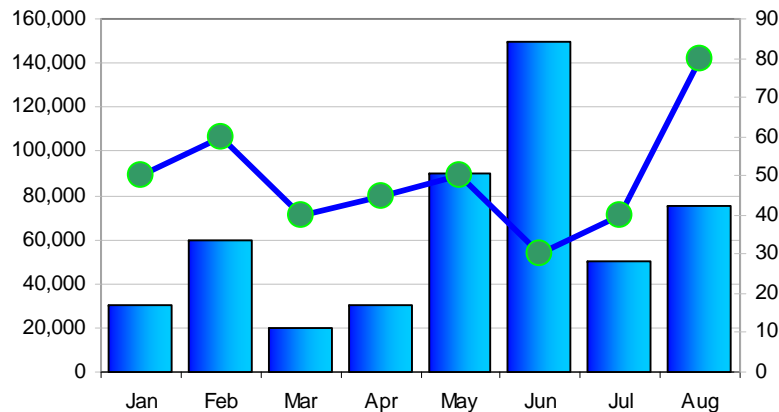


## Public Safety - Onshore Oil Management Oil Spill

Data as of: Sept. 23, 2008  
Username: Administrator

[Main](#)
[Public Safety](#)
[Law & Justice](#)
[Finance & Human Cap..](#)
[Outside Data](#)
[Health & SS](#)
[Land Use](#)

Amount Spilled and Number of Incidents



List of Top Five Violators

| Operator   | No. Incidents | Gallons Spilled |
|------------|---------------|-----------------|
| Operator 1 | 30            | 50,000          |
| Operator 2 | 40            | 35,000          |
| Operator 3 | 20            | 25,000          |
| Operator 4 | 15            | 10,000          |
| Operator 5 | 10            | 8,000           |

Incidents of Largest Violator

| Facility    | Owner      | No. Incidents | Gallons Spilled |
|-------------|------------|---------------|-----------------|
| Facility 1  | Operator 1 | 3             | 5,000           |
| Facility 2  | Operator 1 | 2             | 4,200           |
| Facility 3  | Operator 1 | 1             | 3,100           |
| Facility 4  | Operator 1 | 8             | 2,900           |
| Facility 5  | Operator 1 | 5             | 2,500           |
| Facility 6  | Operator 1 | 6             | 1,000           |
| Facility 7  | Operator 1 | 1             | 800             |
| Facility 8  | Operator 1 | 3             | 500             |
| Facility 9  | Operator 1 | 2             | 50              |
| Facility 10 | Operator 1 | 1             | 10              |

### Parameters

#### Date From

Jan / 2008

#### Date To

Aug / 2008

#### Trend (Yearly/Monthly)

Monthly

#### Type of Violation

Oil Spill

Filter Report

Note: Dummy Data  
Used

# Oil Spills

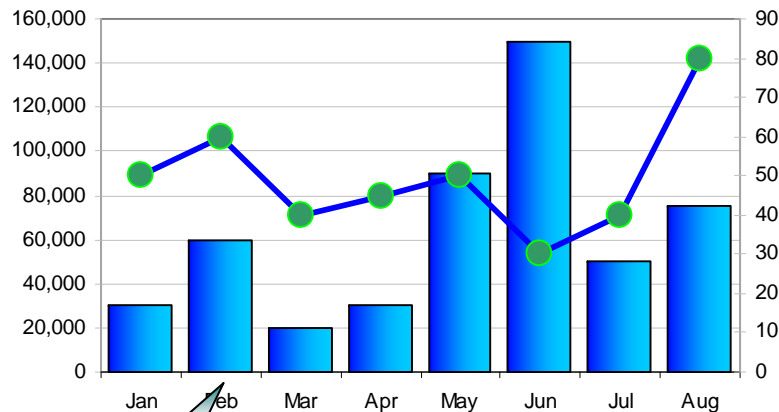


## Public Safety - Onshore Oil Management Oil Spill

Data as of: Sept. 23, 2008  
Username: Administrator

[Main](#) [Public Safety](#) [Law & Justice](#) [Finance & Human Cap..](#) [Outside Data](#) [Health & SS](#) [Land Use](#)

Amount Spilled and Number of Incidents



List of Top Five Violators

| Operator   | No. Incidents | Gallons Spilled |
|------------|---------------|-----------------|
| Operator 1 | 30            | 50,000          |
| Operator 2 | 40            | 35,000          |
| Operator 3 | 20            | 25,000          |
| Operator 4 | 15            | 10,000          |
| Operator 5 | 10            | 8,000           |

Breakdown of incidents for Operator at top of List.

Incidents of Largest Violator

| Facility    | Owner      | No. Incidents | Gallons Spilled |
|-------------|------------|---------------|-----------------|
| Facility 1  | Operator 1 | 3             | 5,000           |
| Facility 2  | Operator 1 | 2             | 4,200           |
| Facility 3  | Operator 1 | 1             | 3,100           |
| Facility 4  | Operator 1 | 8             | 2,900           |
| Facility 5  | Operator 1 | 5             | 2,500           |
| Facility 6  | Operator 1 | 6             | 1,000           |
| Facility 7  | Operator 1 | 1             | 800             |
| Facility 8  | Operator 1 | 3             | 500             |
| Facility 9  | Operator 1 | 2             | 50              |
| Facility 10 | Operator 1 | 1             | 10              |

Will vary by Parameter chosen

### Parameters

#### Date From

Jan / 2008

#### Date To

Aug / 2008

#### Trend (Yearly/Monthly)

Monthly

#### Type of Violation

Oil Spill

#### Filter Report

Includes Oil Spill and Vapor Release

Note: Dummy Data Used

# Oil Facility Health Check

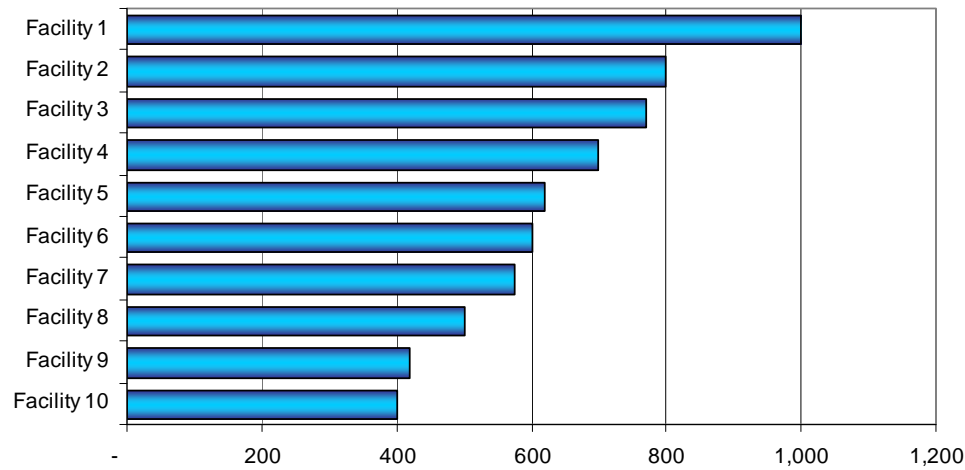


## Public Safety - Onshore Oil Management Oil Facility Health Check

[Main](#)
[Public Safety](#)
[Law & Justice](#)
[Finance & Human Cap..](#)
[Outside Data](#)
[Health & SS](#)
[Land Use](#)

Data as of: Sept. 23, 2008  
Username: Administrator

### Oil Facility Health Check



| Name        | Location   | Amount Released | No. Incidents |
|-------------|------------|-----------------|---------------|
| Facility 1  | Address 1  | 1,000           | 2             |
| Facility 2  | Address 2  | 800             | 6             |
| Facility 3  | Address 3  | 770             | 4             |
| Facility 4  | Address 4  | 700             | 5             |
| Facility 5  | Address 5  | 620             | 3             |
| Facility 6  | Address 6  | 600             | 6             |
| Facility 7  | Address 7  | 575             | 7             |
| Facility 8  | Address 8  | 500             | 5             |
| Facility 9  | Address 9  | 420             | 2             |
| Facility 10 | Address 10 | 400             | 10            |

### Parameters

#### Date From

Jun / 2008

#### Date To

Aug / 2008

#### Type of Violation

Oil Spill

**Filter Report**

Note: Dummy Data Used

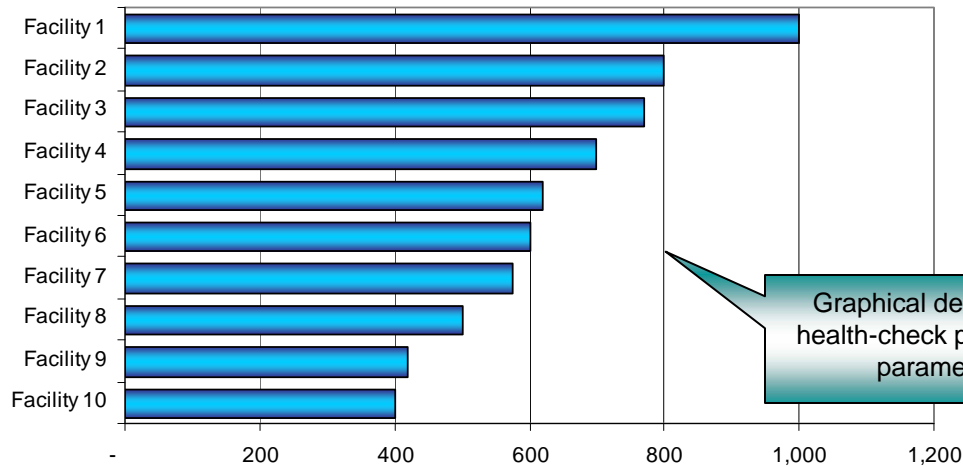
Page down Bottom



# Oil Facility Health Check



## Oil Facility Health Check



Graphical depiction of health-check per chosen parameter.

Numerical data for items shown on screen.

| Name        | Location   | Amount Released | No. Incidents |
|-------------|------------|-----------------|---------------|
| Facility 1  | Address 1  | 1,000           | 2             |
| Facility 2  | Address 2  | 800             | 6             |
| Facility 3  | Address 3  | 770             | 4             |
| Facility 4  | Address 4  | 700             | 5             |
| Facility 5  | Address 5  | 620             | 3             |
| Facility 6  | Address 6  | 600             | 6             |
| Facility 7  | Address 7  | 575             | 7             |
| Facility 8  | Address 8  | 500             | 5             |
| Facility 9  | Address 9  | 420             | 2             |
| Facility 10 | Address 10 | 400             | 10            |

Click "Page Down" for next group of ten facilities

Drill through from here to Detail report.

Page down Bottom

### Parameters

#### Date From

Jun / 2008

#### Date To

Aug / 2008

#### Type of Violation

Oil Spill

**Filter Report**

Note: Dummy Data Used

# Oil Facility Detail



## Public Safety - Onshore Oil Management Oil Facility Detail

Data as of: Sept. 23, 2008  
Username: Administrator

[Main](#)
[Public Safety](#)
[Law & Justice](#)
[Finance & Human Cap..](#)
[Outside Data](#)
[Health & SS](#)
[Land Use](#)

### Oil Facility Health Check - Status

| Name        | Owner    | Location    | Permits | Number of Violations | Type of Violation | Amount Released | Number of Inspections | Amount of Fines | Date of last inspection | Current Status  |
|-------------|----------|-------------|---------|----------------------|-------------------|-----------------|-----------------------|-----------------|-------------------------|-----------------|
| Facility 1  | Owner 1  | Location 1  |         | 2                    | Oil Spill         | 2               | 3                     | 500             | July 15, 2008           | Active          |
| Facility 2  | Owner 2  | Location 2  |         | 0                    | Vapor leak        |                 | 1                     | 200             | June 9, 2008            | Start up Active |
| Facility 3  | Owner 3  | Location 3  |         | 1                    | Oil Spill         | 10              | 2                     | 1,000           | March 20, 2008          | Shut Down       |
| Facility 4  | Owner 4  | Location 4  |         | 3                    | Vapor leak        |                 | 1                     | 50              | April 4, 2008           | Idle            |
| Facility 5  | Owner 5  | Location 5  |         | 1                    | Vapor leak        |                 | 3                     | 3,000           | July 15, 2008           | Active          |
| Facility 6  | Owner 6  | Location 6  |         | 2                    | Oil Spill         | 100             | 0                     | -               | June 9, 2008            | Start up Active |
| Facility 7  | Owner 7  | Location 7  |         | 4                    | Oil Spill         | 60              | 1                     | 100             | March 20, 2008          | Shut Down       |
| Facility 8  | Owner 8  | Location 8  |         | 1                    | Oil Spill         | 2000            | 2                     | 500             | April 4, 2008           | Idle            |
| Facility 9  | Owner 9  | Location 9  |         | 0                    | Vapor leak        |                 | 0                     | 250             | July 15, 2008           | Active          |
| Facility 10 | Owner 10 | Location 10 |         | 2                    | Oil Spill         | 100             | 4                     | 300             | June 9, 2008            | Start up Active |
| Facility 11 | Owner 11 | Location 11 |         | 1                    | Vapor leak        |                 | 1                     | 50              | March 20, 2008          | Shut Down       |
| Facility 12 | Owner 12 | Location 12 |         | 0                    | Vapor leak        |                 | 3                     | 100             | April 4, 2008           | Idle            |
| Facility 13 | Owner 13 | Location 13 |         | 1                    | Oil Spill         | 30              | 1                     | 60              | July 15, 2008           | Active          |
| Facility 14 | Owner 14 | Location 14 |         | 2                    | Oil Spill         | 20              | 0                     | 200             | June 9, 2008            | Start up Active |
| Facility 15 | Owner 15 | Location 15 |         | 1                    | Vapor leak        |                 | 4                     | 400             | March 20, 2008          | Shut Down       |
| Facility 16 | Owner 16 | Location 16 |         | 1                    | Oil Spill         | 80              | 1                     | 100             | April 4, 2008           | Idle            |
| Facility 17 | Owner 17 | Location 17 |         | 1                    | Vapor leak        |                 | 2                     | 200             | July 15, 2008           | Active          |
| Facility 18 | Owner 18 | Location 18 |         | 2                    | Vapor leak        |                 | 0                     | 100             | June 9, 2008            | Start up Active |
| Facility 19 | Owner 19 | Location 19 |         | 2                    | Oil Spill         | 10              | 5                     | 300             | March 20, 2008          | Shut Down       |
| Facility 20 | Owner 20 | Location 20 |         | 3                    | Oil Spill         | 5               | 1                     | 100             | April 4, 2008           | Idle            |

[Drill to Detail](#)

### Parameters

#### Date From

Jun / 2008

#### Date To

Aug / 2008

#### Owner

ALL

#### Status

ALL

**Filter Report**

Note: Dummy Data  
Used

# Oil Facility Detail



## Public Safety - Onshore Oil Management Oil Facility Detail

Data as of: Sept. 23, 2008  
Username: Administrator

[Main](#)
[Public Safety](#)
[Law & Justice](#)
[Finance & Human Cap..](#)
[Outside Data](#)
[Health & SS](#)
[Land Use](#)

### Oil Facility Health Check - Status

| Name        | Owner    | Location    | Permits | Number of Violations | Type of Violation | Amount Released | Number of Inspections | Amount of Fines | Date of last inspection | Current Status  |
|-------------|----------|-------------|---------|----------------------|-------------------|-----------------|-----------------------|-----------------|-------------------------|-----------------|
| Facility 1  | Owner 1  | Location 1  |         | 2                    | Oil Spill         | 2               | 3                     | 500             | July 15, 2008           | Active          |
| Facility 2  | Owner 2  | Location 2  |         | 0                    | Vapor leak        |                 | 1                     | 200             | June 9, 2008            | Start up Active |
| Facility 3  | Owner 3  | Location 3  |         | 1                    | Oil Spill         | 10              | 2                     | 1,000           | March 20, 2008          | Shut Down       |
| Facility 4  | Owner 4  | Location 4  |         | 3                    | Vapor leak        |                 | 1                     | 50              | April 4, 2008           | Idle            |
| Facility 5  | Owner 5  | Location 5  |         | 1                    | Vapor leak        |                 | 3                     | 3,000           | July 15, 2008           | Active          |
| Facility 6  | Owner 6  | Location 6  |         | 2                    | Oil Spill         | 100             | 0                     | -               | June 9, 2008            | Start up Active |
| Facility 7  | Owner 7  | Location 7  |         | 4                    | Oil Spill         | 60              | 1                     | 100             | March 20, 2008          | Shut Down       |
| Facility 8  | Owner 8  | Location 8  |         | 1                    | Oil Spill         | 2000            | 2                     | 500             | April 4, 2008           | Idle            |
| Facility 9  | Owner 9  | Location 9  |         | 0                    | Vapor leak        |                 | 0                     | 250             | July 15, 2008           | Active          |
| Facility 10 | Owner 10 | Location 10 |         | 2                    | Oil Spill         | 100             | 4                     | 300             | June 9, 2008            | Start up Active |
| Facility 11 | Owner 11 | Location 11 |         | 1                    | Vapor leak        |                 | 1                     | 50              | March 20, 2008          | Shut Down       |
| Facility 12 | Owner 12 | Location 12 |         | 0                    | Vapor leak        |                 | 3                     | 100             | April 4, 2008           | Idle            |
| Facility 13 | Owner 13 | Location 13 |         | 1                    | Oil Spill         | 30              | 1                     | 60              | July 15, 2008           | Active          |
| Facility 14 | Owner 14 | Location 14 |         | 2                    | Oil Spill         | 20              | 0                     | 200             | June 9, 2008            | Start up Active |
| Facility 15 | Owner 15 | Location 15 |         | 1                    | Vapor leak        |                 | 4                     | 400             | March 20, 2008          | Shut Down       |
| Facility 16 | Owner 16 | Location 16 |         | 1                    | Oil Spill         | 80              | 1                     | 100             | April 4, 2008           | Idle            |
| Facility 17 | Owner 17 | Location 17 |         | 1                    | Vapor leak        |                 | 2                     | 200             | July 15, 2008           | Active          |
| Facility 18 | Owner 18 | Location 18 |         | 2                    | Vapor leak        |                 | 0                     | 100             | June 9, 2008            | Start up Active |
| Facility 19 | Owner 19 | Location 19 |         | 2                    | Oil Spill         | 10              | 5                     | 300             | March 20, 2008          | Shut Down       |
| Facility 20 | Owner 20 | Location 20 |         | 3                    | Oil Spill         | 5               | 1                     | 100             | April 4, 2008           | Idle            |

Will vary by Date range.

### Parameters

#### Date From

Jun / 2008

#### Date To

Aug / 2008

#### Owner

ALL

#### Status

ALL

**Filter Report**

[Drill to Detail](#)

Link to page with individual records

Will not vary by Date range.

Note: Dummy Data Used

# Oil Facility Individual Record



## Public Safety - Onshore Oil Management Oil Facility Individual Record

[Main](#)
[Public Safety](#)
[Law & Justice](#)
[Finance & Human Cap..](#)
[Outside Data](#)
[Health & SS](#)
[Land Use](#)

Data as of: Sept. 23, 2008  
Username: Administrator

### Oil Facility Individual Records

| Name        | Owner | Location   | Violation           | Date of Violation | Inspection after failure Y/N | Amount of Fines | Cost to Inspect | Current Status  |
|-------------|-------|------------|---------------------|-------------------|------------------------------|-----------------|-----------------|-----------------|
| Facility 1  |       | Address 1  | Leaking Gauge Hatch |                   | Y                            | 500             |                 | Active          |
| Facility 2  |       | Address 2  | Vapor leak          |                   | Y                            | 200             |                 | Start up Active |
| Facility 3  |       | Address 3  | Open Ended Line     |                   | N                            | 1000            |                 | Shut Down       |
| Facility 4  |       | Address 4  | Exceeded H2S Limit  |                   | Y                            | 50              |                 | Idle            |
| Facility 5  |       | Address 5  | Failure to Report   |                   | Y                            | 3000            |                 | Active          |
| Facility 6  |       | Address 6  | Leaking Gauge Hatch |                   | Y                            | 0               |                 | Start up Active |
| Facility 7  |       | Address 7  | Vapor leak          |                   | N                            | 100             |                 | Shut Down       |
| Facility 8  |       | Address 8  | Open Ended Line     |                   | Y                            | 500             |                 | Idle            |
| Facility 9  |       | Address 9  | Exceeded H2S Limit  |                   | Y                            | 250             |                 | Active          |
| Facility 10 |       | Address 10 | Failure to Report   |                   | Y                            | 300             |                 | Start up Active |
| Facility 11 |       | Address 11 | Leaking Gauge Hatch |                   | N                            | 50              |                 | Shut Down       |
| Facility 12 |       | Address 12 | Vapor leak          |                   | Y                            | 100             |                 | Idle            |
| Facility 13 |       | Address 13 | Open Ended Line     |                   | Y                            | 60              |                 | Active          |
| Facility 14 |       | Address 14 | Exceeded H2S Limit  |                   | Y                            | 200             |                 | Start up Active |
| Facility 15 |       | Address 15 | Failure to Report   |                   | N                            | 400             |                 | Shut Down       |
| Facility 16 |       | Address 16 | Leaking Gauge Hatch |                   | Y                            | 100             |                 | Idle            |
| Facility 17 |       | Address 17 | Vapor leak          |                   | Y                            | 200             |                 | Active          |
| Facility 18 |       | Address 18 | Open Ended Line     |                   | Y                            | 100             |                 | Start up Active |
| Facility 19 |       | Address 19 | Exceeded H2S Limit  |                   | N                            | 300             |                 | Shut Down       |
| Facility 20 |       | Address 20 | Failure to Report   |                   | Y                            | 100             |                 | Idle            |

#### Parameters

##### Date From

Jun / 2008

##### Date To

Aug / 2008

##### Owner

ALL

**Filter Report**

Note: Dummy Data Used

# Oil Facility Individual Record



## Public Safety - Onshore Oil Management Oil Facility Individual Record

[Main](#)
[Public Safety](#)
[Law & Justice](#)
[Finance & Human Cap.](#)
[Outside Data](#)
[Health & SS](#)
[Land Use](#)

Data as of: Sept. 23, 2008  
Username: Administrator

### Oil Facility Individual Records

Sort by Date, Amount of Fines, or Cost to Inspect

| Name        | Owner | Location   | Violation           | Date of Violation | Inspection after failure Y/N | Amount of Fines | Cost to Inspect | Current Status  |
|-------------|-------|------------|---------------------|-------------------|------------------------------|-----------------|-----------------|-----------------|
| Facility 1  |       | Address 1  | Leaking Gauge Hatch |                   | Y                            | 500             |                 | Active          |
| Facility 2  |       | Address 2  | Vapor leak          |                   | Y                            | 200             |                 | Start up Active |
| Facility 3  |       | Address 3  | Open Ended Line     |                   | N                            | 1000            |                 | Shut Down       |
| Facility 4  |       | Address 4  | Exceeded H2S Limit  |                   | Y                            | 50              |                 | Idle            |
| Facility 5  |       | Address 5  | Failure to Report   |                   | Y                            | 3000            |                 | Active          |
| Facility 6  |       | Address 6  | Leaking Gauge Hatch |                   | Y                            | 0               |                 | Start up Active |
| Facility 7  |       | Address 7  | Vapor leak          |                   | N                            | 100             |                 | Shut Down       |
| Facility 8  |       | Address 8  | Open Ended Line     |                   | Y                            | 500             |                 | Idle            |
| Facility 9  |       | Address 9  | Exceeded H2S Limit  |                   | Y                            | 250             |                 | Active          |
| Facility 10 |       | Address 10 | Failure to Report   |                   | Y                            | 300             |                 | Start up Active |
| Facility 11 |       | Address 11 | Leaking Gauge Hatch |                   | N                            | 50              |                 | Shut Down       |
| Facility 12 |       | Address 12 | Vapor leak          |                   | Y                            | 100             |                 | Idle            |
| Facility 13 |       | Address 13 | Open Ended Line     |                   | Y                            | 60              |                 | Active          |
| Facility 14 |       | Address 14 | Exceeded H2S Limit  |                   | Y                            | 200             |                 | Start up Active |
| Facility 15 |       | Address 15 | Failure to Report   |                   | N                            | 400             |                 | Shut Down       |
| Facility 16 |       | Address 16 | Leaking Gauge Hatch |                   | Y                            | 100             |                 | Idle            |
| Facility 17 |       | Address 17 | Vapor leak          |                   | Y                            | 200             |                 | Active          |
| Facility 18 |       | Address 18 | Open Ended Line     |                   | Y                            | 100             |                 | Start up Active |
| Facility 19 |       | Address 19 | Exceeded H2S Limit  |                   | N                            | 300             |                 | Shut Down       |
| Facility 20 |       | Address 20 | Failure to Report   |                   | Y                            | 100             |                 | Idle            |

### Parameters

#### Date From

Jun / 2008

#### Date To

Aug / 2008

#### Owner

ALL

Filter Report

Vary by Owner

Note: Dummy Data Used

# Oil Spill Largest Violations



## Public Safety - Onshore Oil Management Oil Spill Largest Violations

[Main](#) [Public Safety](#) [Law & Justice](#) [Finance & Human Cap.](#) [Outside Data](#) [Health & SS](#) [Land Use](#)

Data as of: Sept. 23, 2008  
Username: Administrator

### Largest Violations - History

| Rank | Operator    | Facility    | Month/Year | Amt Spilled |
|------|-------------|-------------|------------|-------------|
| 1    | Operator 1  | Facility 1  | Dec 2007   | 80,000      |
| 2    | Operator 2  | Facility 2  | Jan 2008   | 75,000      |
| 3    | Operator 3  | Facility 3  | Dec 2007   | 65,000      |
| 4    | Operator 4  | Facility 4  | July 2003  | 45,000      |
| 5    | Operator 5  | Facility 5  | May 2003   | 30,000      |
| 6    | Operator 6  | Facility 6  | Nov 2007   | 20,000      |
| 7    | Operator 7  | Facility 7  | Jan 2003   | 12,500      |
| 8    | Operator 8  | Facility 8  | Feb 2002   | 12,000      |
| 9    | Operator 9  | Facility 9  | Aug 2004   | 11,000      |
| 10   | Operator 10 | Facility 10 | Aug 2006   | 10,000      |

#### Parameters

##### Date From

Jan / 2002

##### Date To

Aug / 2008

[Filter Report](#)

Note: Dummy Data  
Used

# Programming of Future Work

- Work plan for systematic inspections
- Systematic scheduling and tracking of re-inspections
- Scheduling of facility permits