

# ANNEXATION MAP No.8 OF COMMUNITY FACILITIES DISTRICT NO. 2002-1

COUNTY OF SANTA BARBARA - STATE OF CALIFORNIA

**CLERK OF THE BOARD'S STATEMENT**

I HEREBY CERTIFY THAT THE WITHIN MAP SHOWING ANNEXATION No. 8 OF COMMUNITY FACILITIES DISTRICT 2002-1 (ORCUTT COMMUNITY PLAN) COUNTY OF SANTA BARBARA, STATE OF CALIFORNIA, WAS APPROVED BY THE BOARD OF SUPERVISORS OF THE COUNTY OF SANTA BARBARA AT A REGULAR MEETING THEREOF, HELD ON THE \_\_\_\_ DAY OF \_\_\_\_\_, 2023, BY RESOLUTION NO. \_\_\_\_\_.

FILED IN THE OFFICE OF THE COUNTY CLERK, COUNTY OF SANTA BARBARA THIS \_\_\_\_ DAY OF \_\_\_\_\_, 2023.

MONA MIYASATO  
CLERK OF THE BOARD OF SUPERVISORS OF SANTA BARBARA COUNTY BY: \_\_\_\_\_  
DEPUTY

**COUNTY RECORDER'S STATEMENT**

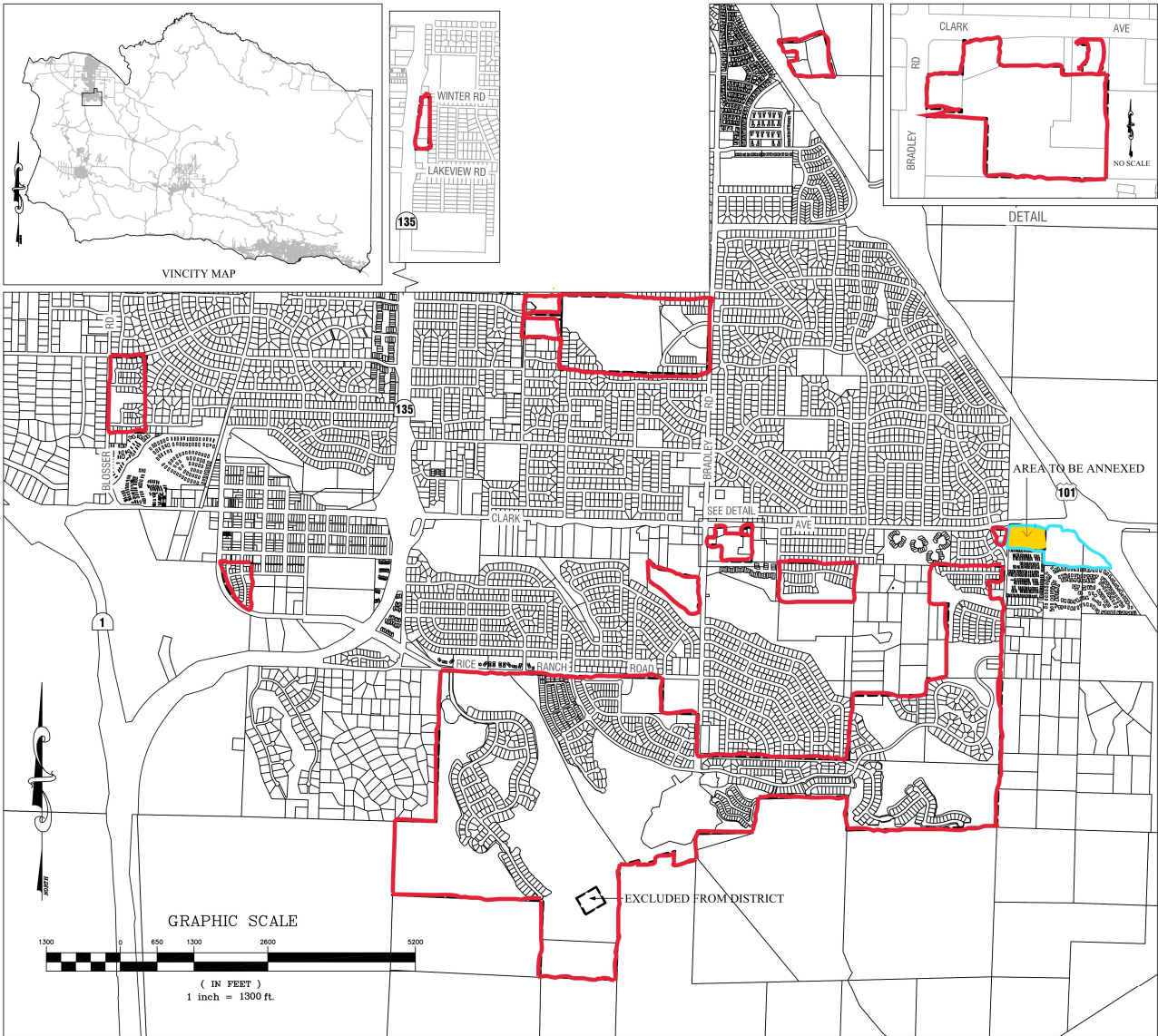
FILED THIS \_\_\_\_ DAY OF \_\_\_\_\_, 2023, AT THE HOUR OF \_\_\_\_ O'CLOCK \_\_\_\_ M. IN BOOK \_\_\_\_ OF MAPS OF ASSESSMENT AND COMMUNITY FACILITIES DISTRICTS AT PAGE(S) \_\_\_\_\_ IN THE OFFICE OF THE COUNTY RECORDER IN THE COUNTY OF SANTA BARBARA, STATE OF CALIFORNIA.

JOSEPH E. HOLLAND  
COUNTY CLERK - RECORDER - ASSESSOR BY: \_\_\_\_\_  
DEPUTY

**COUNTY SURVEYOR'S STATEMENT**

THIS MAP WAS PREPARED UNDER MY DIRECTION IN ACCORDANCE WITH CALIFORNIA GOVERNMENT CODE SECTION 27557, AT THE REQUEST OF THE TREASURER - TAX COLLECTOR OF SANTA BARBARA COUNTY. I CERTIFY THE EXISTING DISTRICT LINES SHOWN HEREON ARE CONSISTENT WITH COMMUNITY FACILITIES DISTRICT NO. 2002-1 APPROVED BY THE BOARD OF SUPERVISORS OF THE COUNTY OF SANTA BARBARA, ON THE \_\_\_\_ DAY OF \_\_\_\_\_, 2016, BY ORDINANCE NO. 4955. RECORDED AT BOOK 4 OF MAPS OF ASSESSMENT AND COMMUNITY FACILITIES DISTRICTS AT PAGE(S) 71-72 IN THE OFFICE OF THE COUNTY RECORDER FOR THE COUNTY OF SANTA BARBARA, STATE OF CALIFORNIA. I ALSO CERTIFY THAT THE ANNEXED AREA SHOWN IS CONSISTENT WITH ANNEXATION No. 8 OF SAID DISTRICT.

ALEKSANDAR \_\_\_\_\_ DATE  
COUNTY SURVEYOR 4955  
P.L.S. 5899  
LICENSE EXPIRATION DATE: 12/31/2023



LEGAL DESCRIPTION (APN) ANNEXATION No.8 (ORCUTT GATEWAY RETAIL COMMERCIAL CENTER / KEY SITE 2)  
ASSESSOR PARCEL NUMBER: 129-280-001

- LEGEND**
- COMMUNITY FACILITIES DISTRICT BOUNDARY
  - ANNEXATION No.8 (ORCUTT GATEWAY RETAIL COMMERCIAL CENTER / KEY SITE 2)
  - KEY SITE 2 BOUNDARIES

<p>ANNEXATION NO. 8 OF COMMUNITY FACILITIES DISTRICT 2002-1 (ORCUTT COMMUNITY PLAN) COUNTY OF SANTA BARBARA, STATE OF CALIFORNIA</p>	<p>SHEET 1 OF 1</p>
--	-------------------------