

**BOARD OF SUPERVISORS OF THE
COUNTY OF SANTA BARBARA, STATE OF CALIFORNIA**

Resolution No. _____

In the Matter of Declaring County's Intention)	NOTICE AND RESOLUTION OF
to Convey Fee Interest to the Summerland)	INTENTION TO CONVEY FEE
Sanitary District of County Owned Property)	INTEREST IN COUNTY REAL
Known as APN 005-240-Carey Place)	PROPERTY
in Summerland, CA)	(Gov Code 25365)

(Four-Fifths Vote Required)

WHEREAS, the COUNTY OF SANTA BARBARA, a political subdivision of the State of California (hereinafter "COUNTY"), is owner, in fee, of that certain parcel of real property in Summerland, in the County of Santa Barbara, State of California, known as Santa Barbara County Assessor's Parcel Number 005-240-Carey Place, (hereinafter referred to as the "Property"); and

WHEREAS, the Summerland Sanitary District, an independent special district, has sewage infrastructure which is required for their operations currently located on the Property; and

WHEREAS, in order to accommodate the Summerland Sanitary District's future construction, operation and maintenance of their infrastructure COUNTY is conveying fee interest of the Property legally described on Exhibit "A" and shown as the cross hatched area on "Exhibit B" attached hereto and incorporated herein by reference, to be held by the Summerland Sanitary District, and has determined that such conveyance is in the public's best interests.

NOW, THEREFORE, BE IT RESOLVED, that pursuant to Government Code §25365 the Board of Supervisors of the County of Santa Barbara, State of California does hereby find, determine and order as follows:

1. The above recitals are true and correct.
2. The Santa Barbara County Board of Supervisors does hereby declare its intention to convey fee ownership of County owned property (APN 005-240-Carey Place) for the location and routine maintenance of existing sewer infrastructure, in the unincorporated area of Santa Barbara County, Summerland, California, which is described on Exhibit "A" and shown as the cross hatched area on "Exhibit B" attached hereto and incorporated herein by reference.
3. It is in the public interest to convey the fee ownership of said County Property.

4. That the fee ownership is being granted to the Summerland Sanitary District, an independent special district.
5. That pursuant to Government Code Section 6061, notice of the intention of the Board of Supervisors to convey fee ownership to the Summerland Sanitary District has been given by publishing a Notice of the Resolution once prior to the Board's meeting in the Santa Barbara News-Press, a newspaper of general circulation published in the County of Santa Barbara, State of California.
6. That the Santa Barbara County Board of Supervisors will meet in the meeting room of said Board on the fourth floor 105 East Anapamu, in the City of Santa Barbara, County of Santa Barbara, State of California, on Tuesday, March 20, 2012, to grant and convey fee ownership to the Summerland Sanitary District.

///
///
///

PASSED AND ADOPTED by the Board of Supervisors of the County of Santa Barbara, State of California, this _____ day of _____, 2011, by the following vote:

AYES:

NOES:

ABSENT:

ABSTAINED:

COUNTY OF SANTA BARBARA

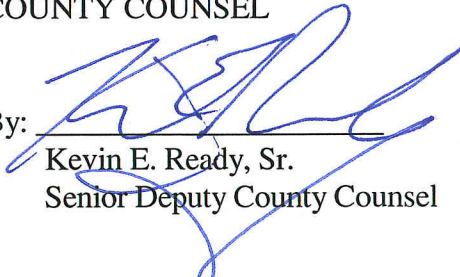
ATTEST:
CHANDRA L. WALLER
CLERK OF THE BOARD

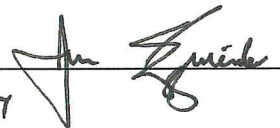
By: _____
Chair, Board of Supervisors

By: _____
Deputy Clerk

APPROVED AS TO FORM:
DENNIS A. MARSHALL
COUNTY COUNSEL

APPROVED AS TO ACCOUNTING FORM
ROBERT W. GEIS, CPA
AUDITOR-CONTROLLER

By: 
Kevin E. Ready, Sr.
Senior Deputy County Counsel

By: 
Deputy

LEGAL DESCRIPTION

EXHIBIT "A"

That portion of the Town of Summerland, in the County of Santa Barbara, State of California shown as Carey Place on the Map of said town filed as Map No. 2 on Rack No. 1 in the office of the County Recorder of said County.

EXCEPTING therefrom the mineral rights, including the right of entry to develop, remove and exploit minerals located on said land, as reserved by H. L. Williams in the document recorded August 9, 1890 in Book 27, Page 615 of Deeds in the Office of the County Recorder of Santa Barbara County.

PUEBLO LANDS

LILLIE

VALENCIA RD.

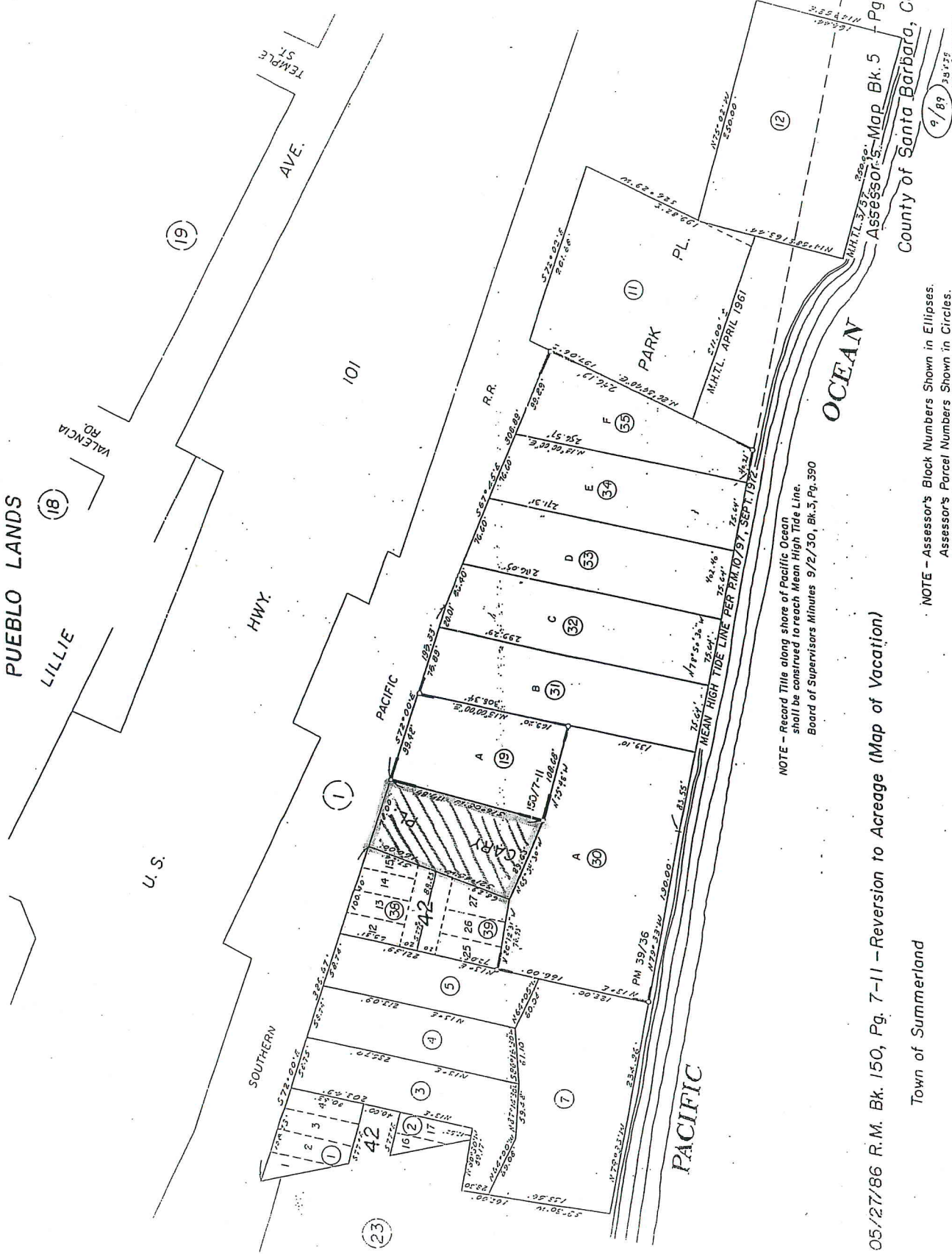
U. S.

HWY.

TEMPLE ST.
AVE.

101

EXHIBIT B



NOTE - Record Title along shore of Pacific Ocean shall be construed to reach Mean High Tide Line. Board of Supervisors Minutes 9/2/30, Bk. 5, Pg. 390

05/27/86 R.M. Bk. 150, Pg. 7-11 - Reversion to Acreage (Map of Vacation)

Assessor's Map Bk. 5 - Pg. 24

County of Santa Barbara, Calif.

Town of Summerland

NOTE - Assessor's Block Numbers Shown in Ellipses. Assessor's Parcel Numbers Shown in Circles.

9/89
3817F
V.M.E. FANNETT, F.T.