

849 CHELTENHAM ROAD

Bonillo- LaTorre SFD

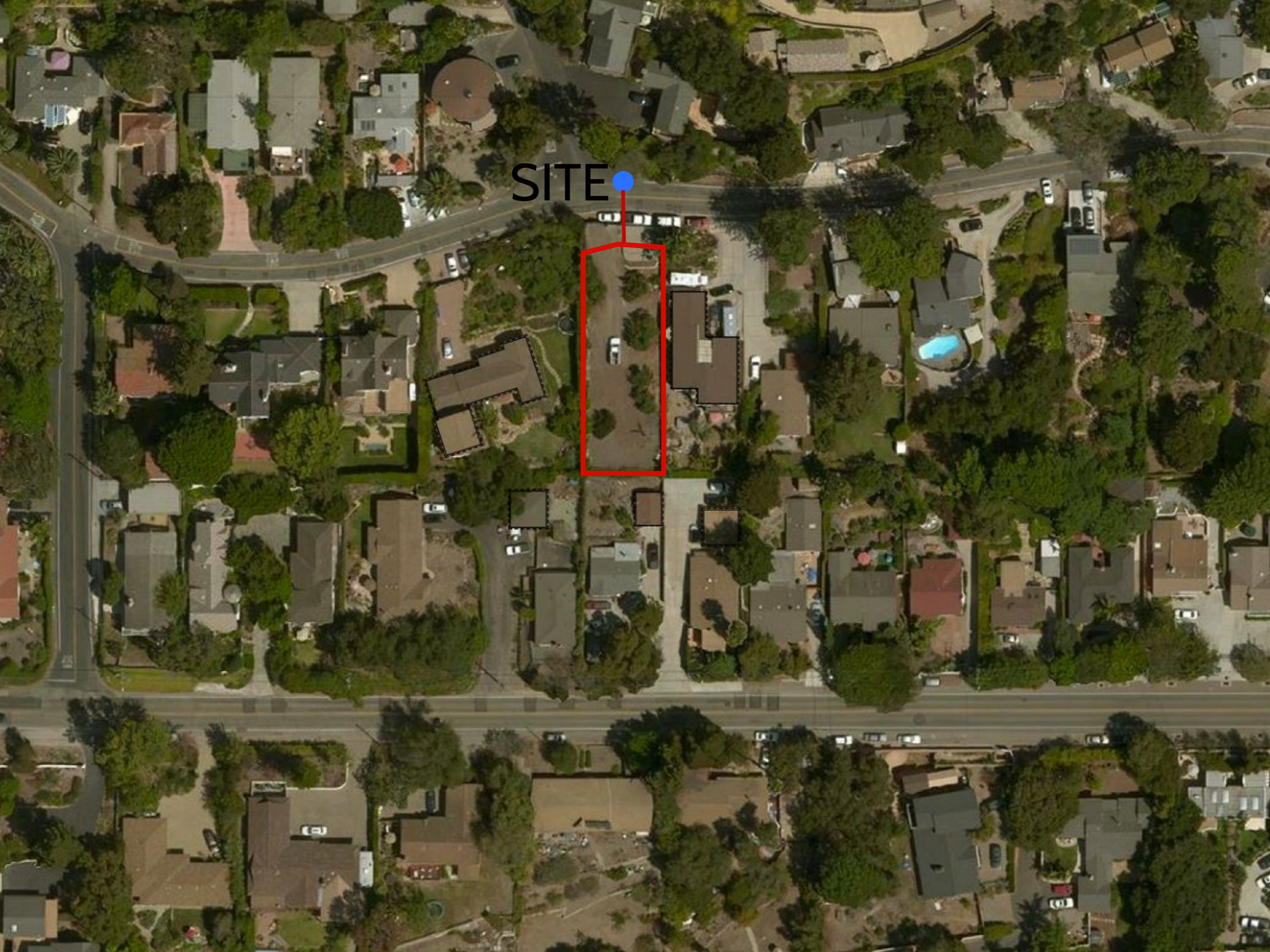
Appeal

SANTA BARBARA BOARD OF SUPERVISORS

May 03, 2016



SITE



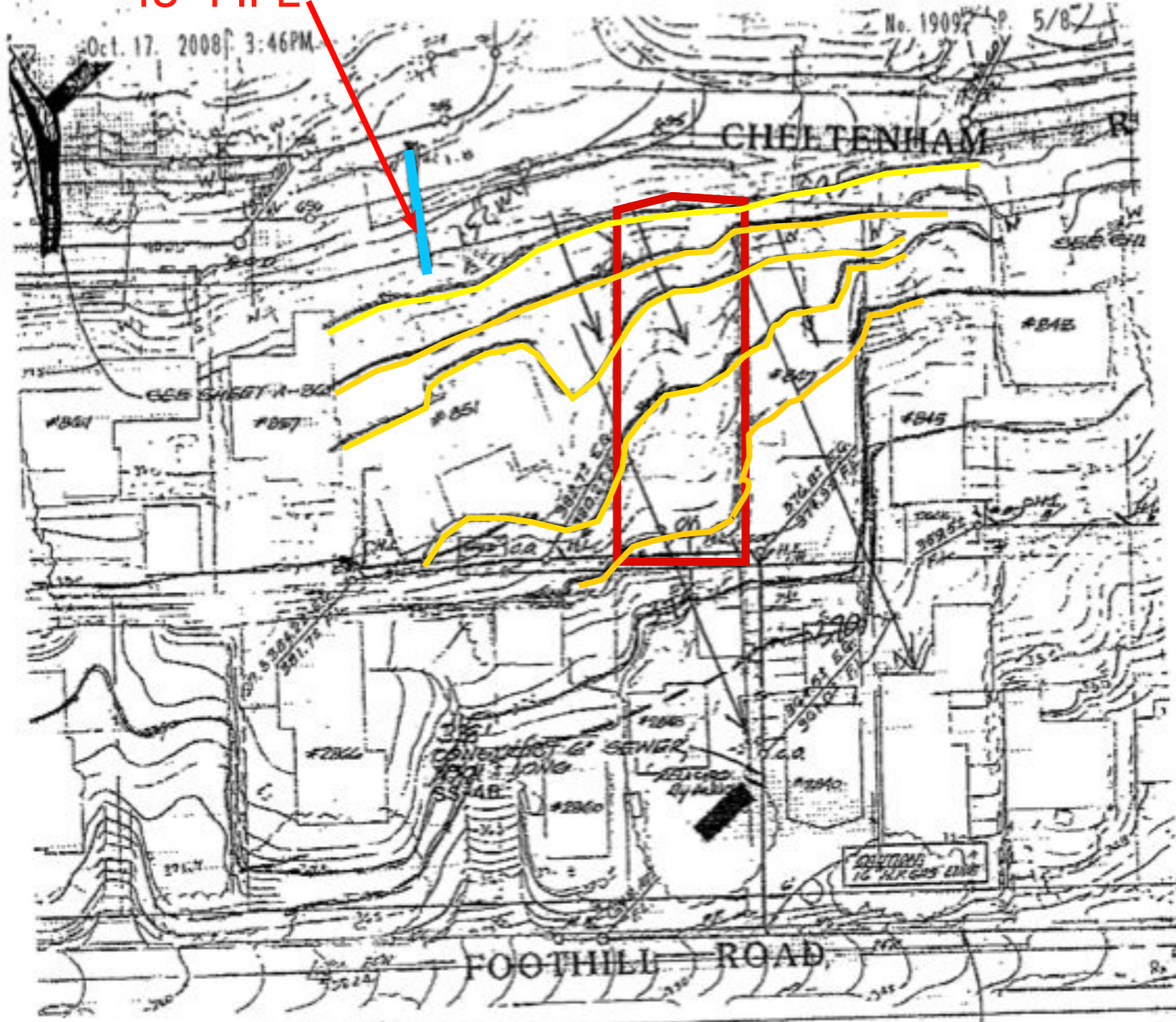


SITE





18" PIPE



6-1-1984

(Topo is probably much earlier)

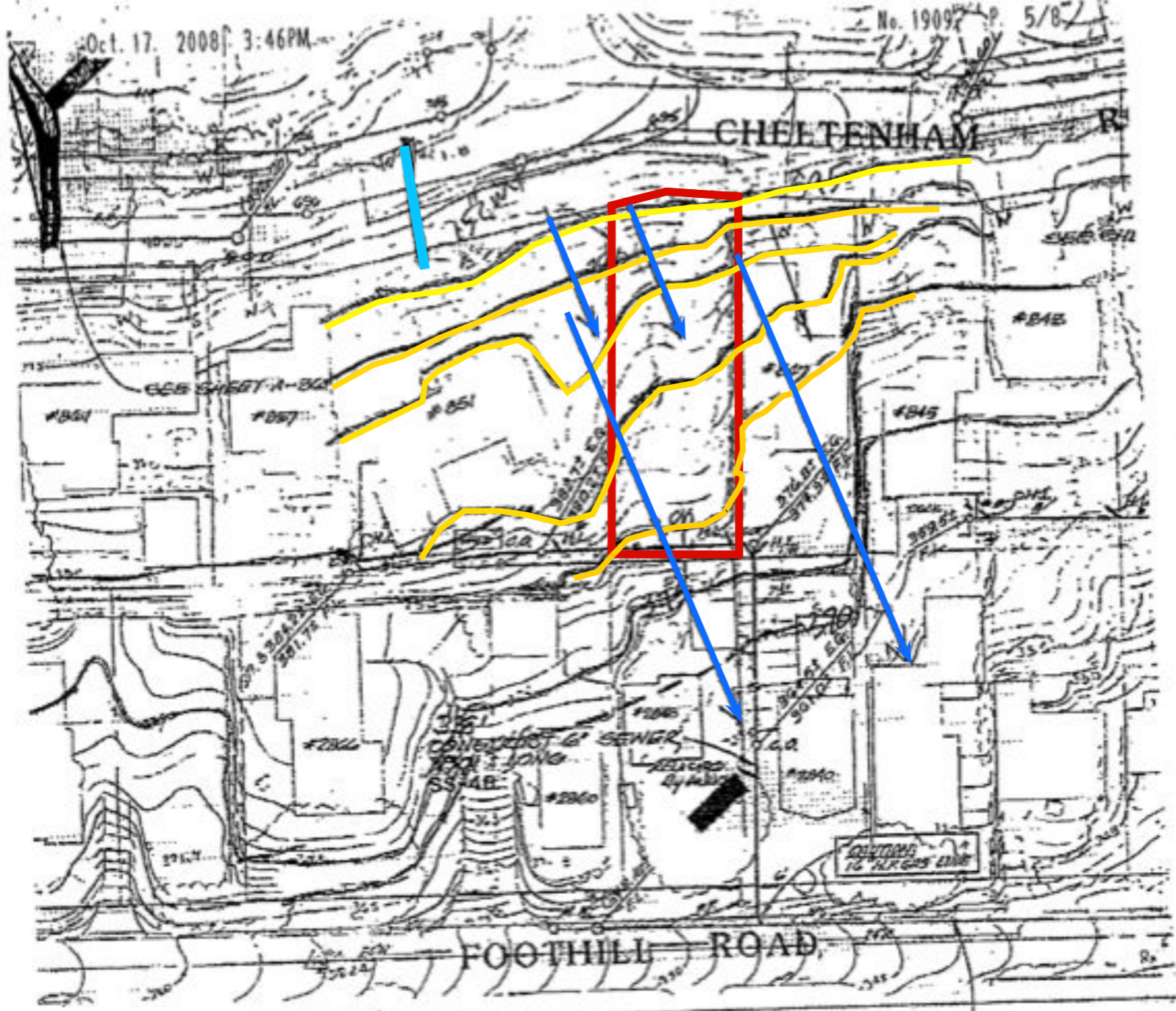
(PRE 1984)

PROJECT ENGINEER:
FLOWERS & ASSOCIATES, INC.
CIVIL ENGINEERS

MISSION CAN
COUNTY SERVICE

Oct. 17, 2008 3:46PM

No. 1909 5/8



6-1-1984

SEE SHEET A-19

(Topo is probably much earlier)

(PRE 1984)

PROJECT ENGINEER:
FLOWERS & ASSOCIATES, INC.
CIVIL ENGINEERS

MISSION CAN
COUNTY SERVICE

Oct. 17. 2008 3:47PM

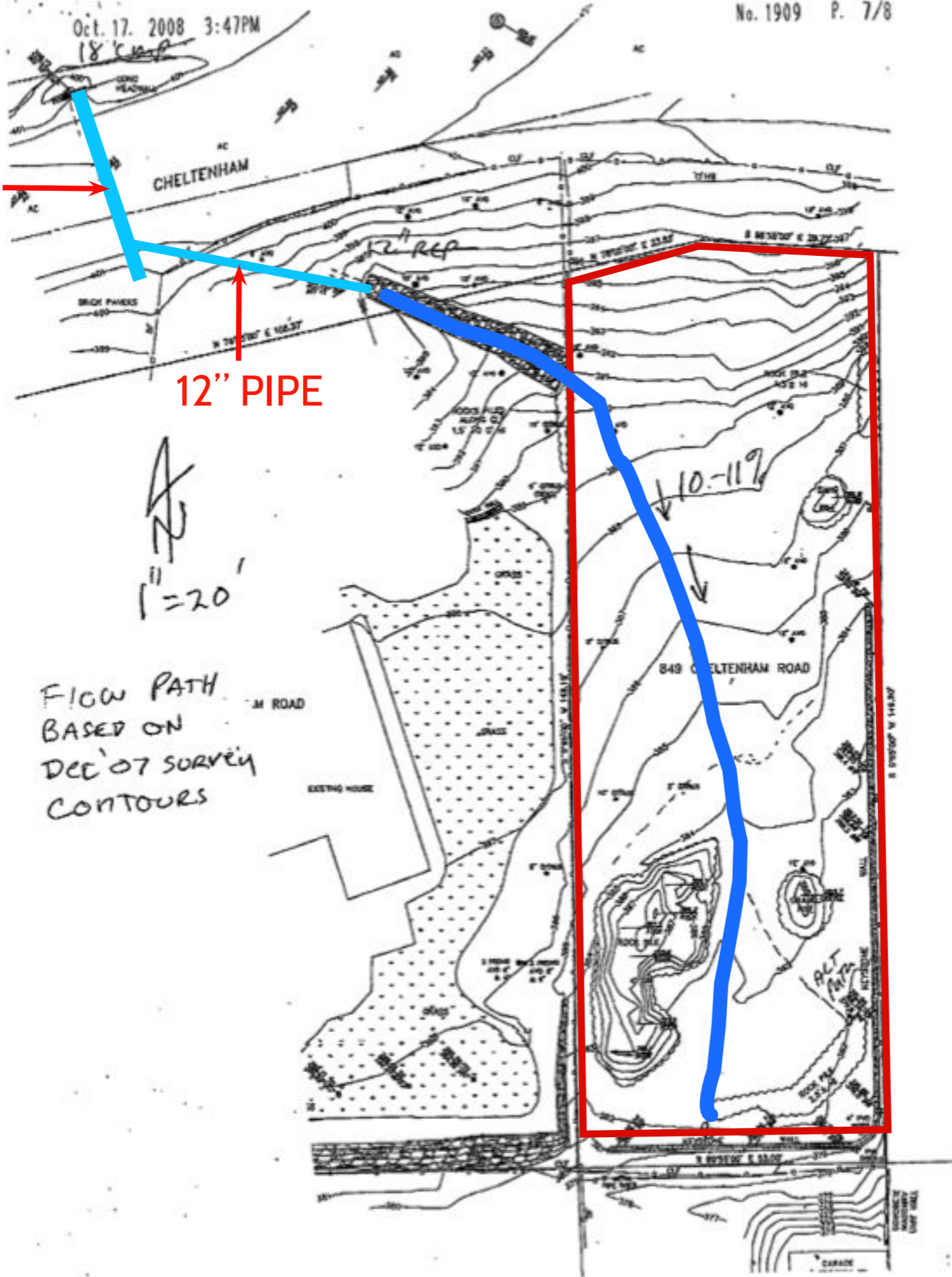
No. 1909 P. 7/8

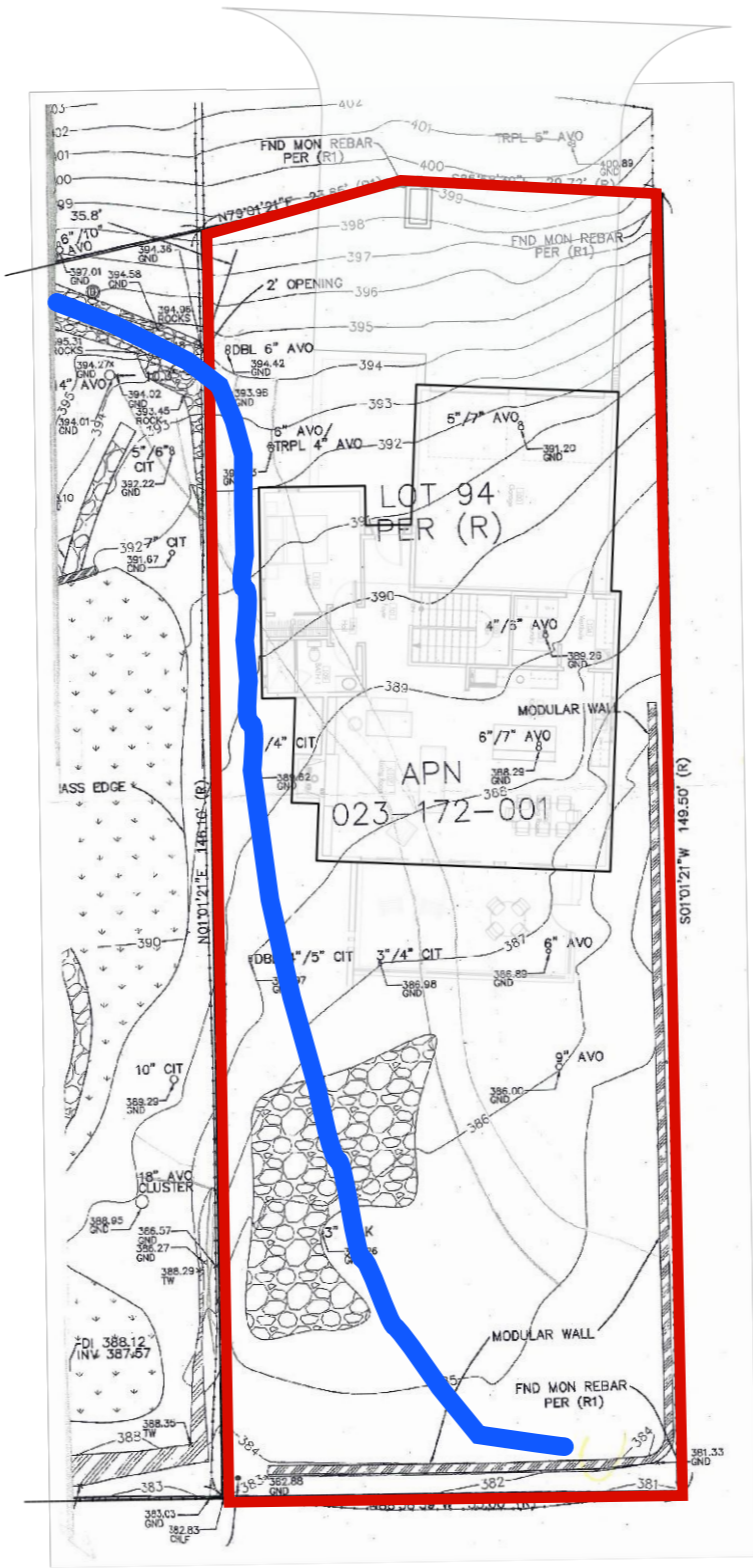
18" PIPE

12" PIPE

FLOW PATH
BASED ON
DEC '07 SURVEY
CONTOURS

1" = 20'





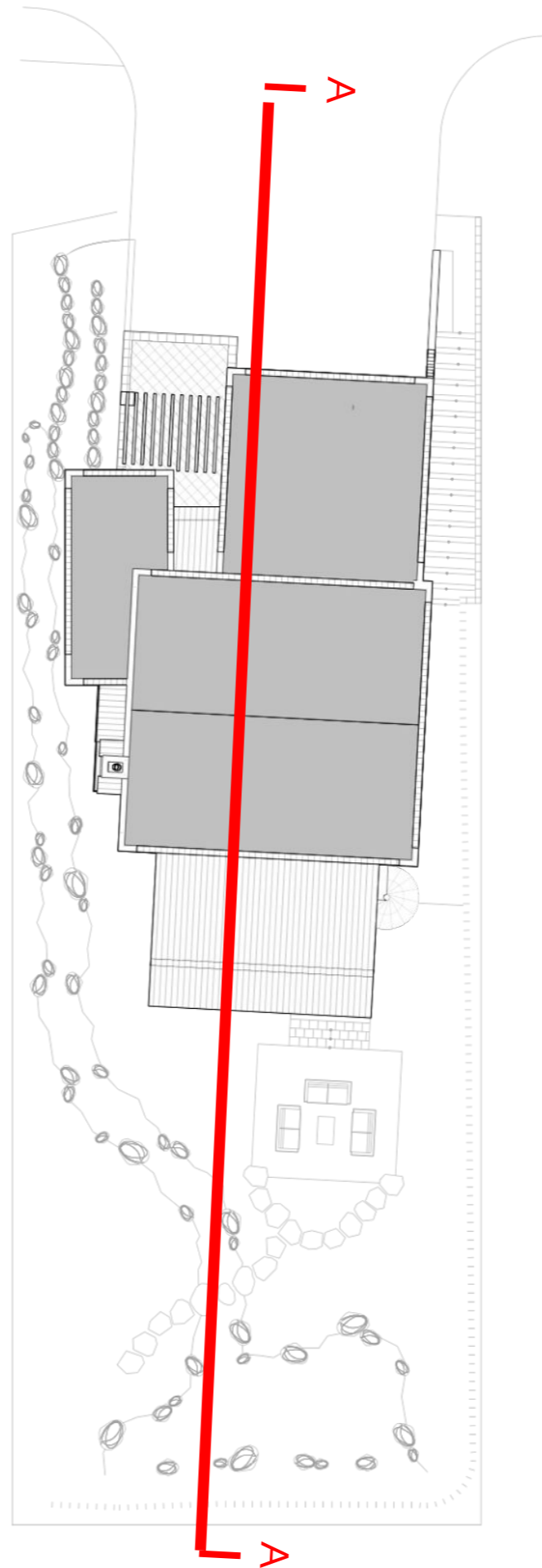


PREVIOUS DESIGN

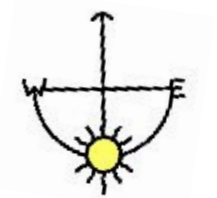


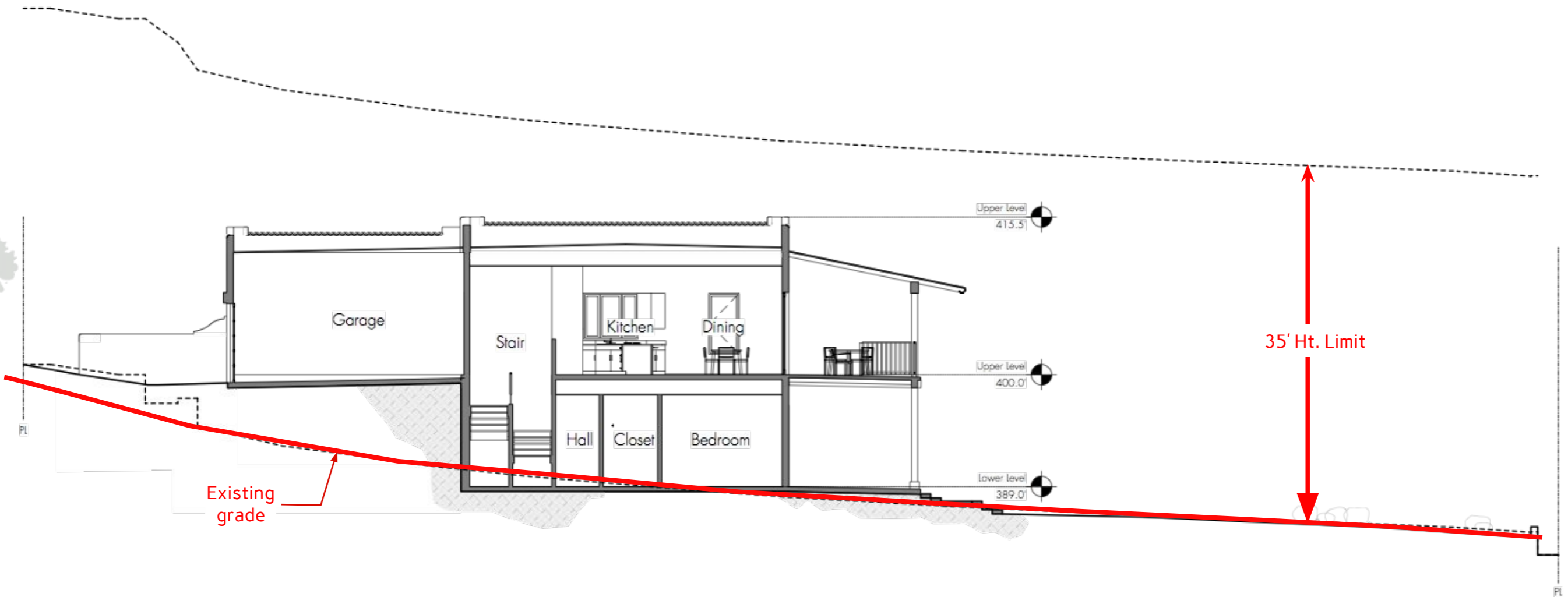
CURRENT DESIGN

Cheltenham Road

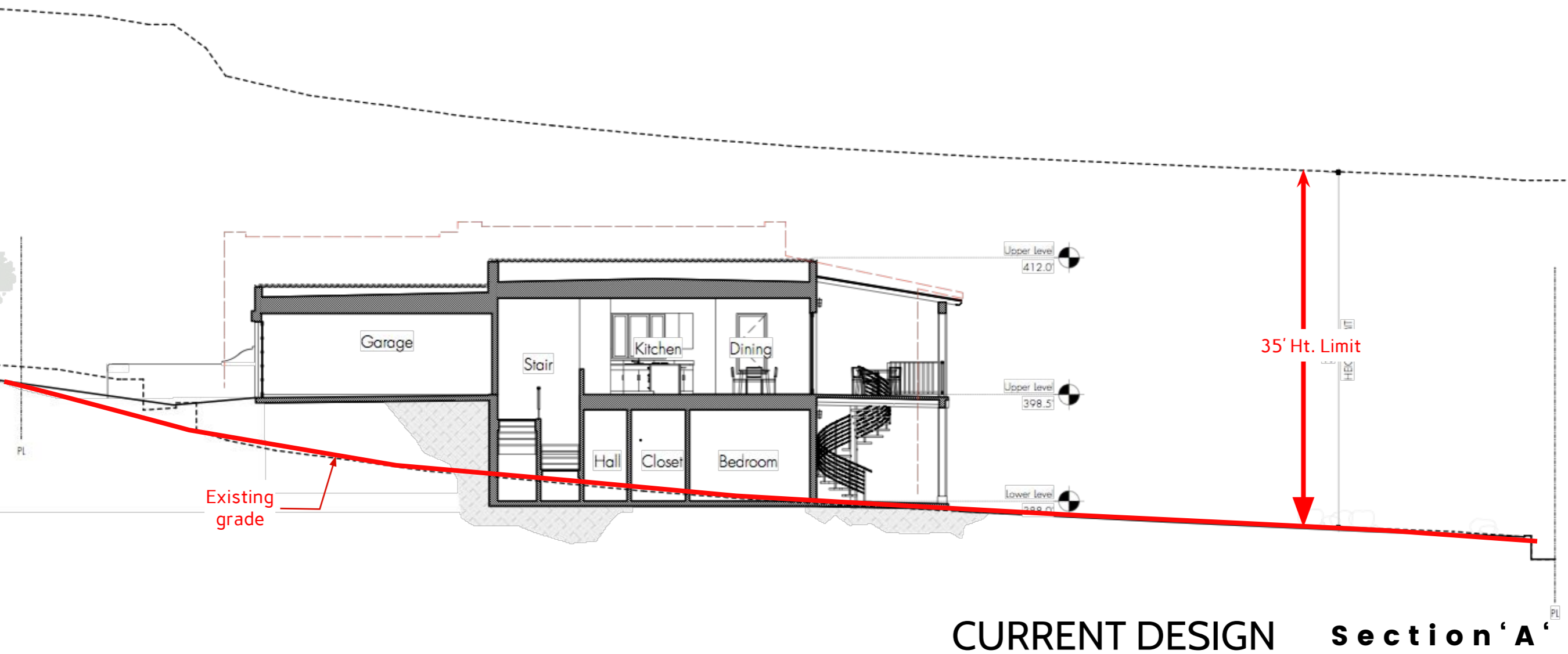


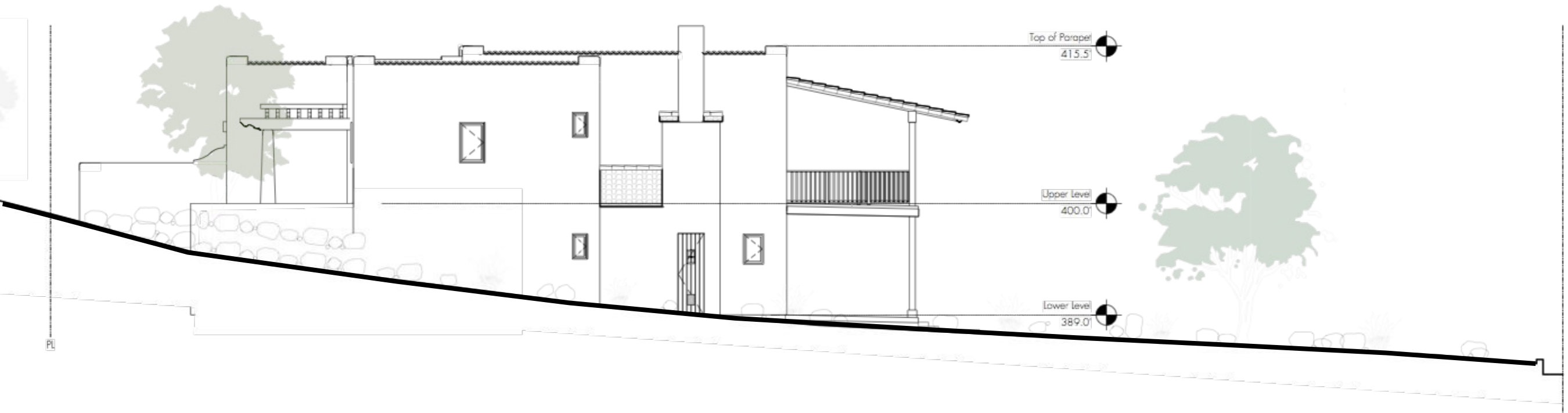
Site Plan





PREVIOUS DESIGN **Section 'A'**

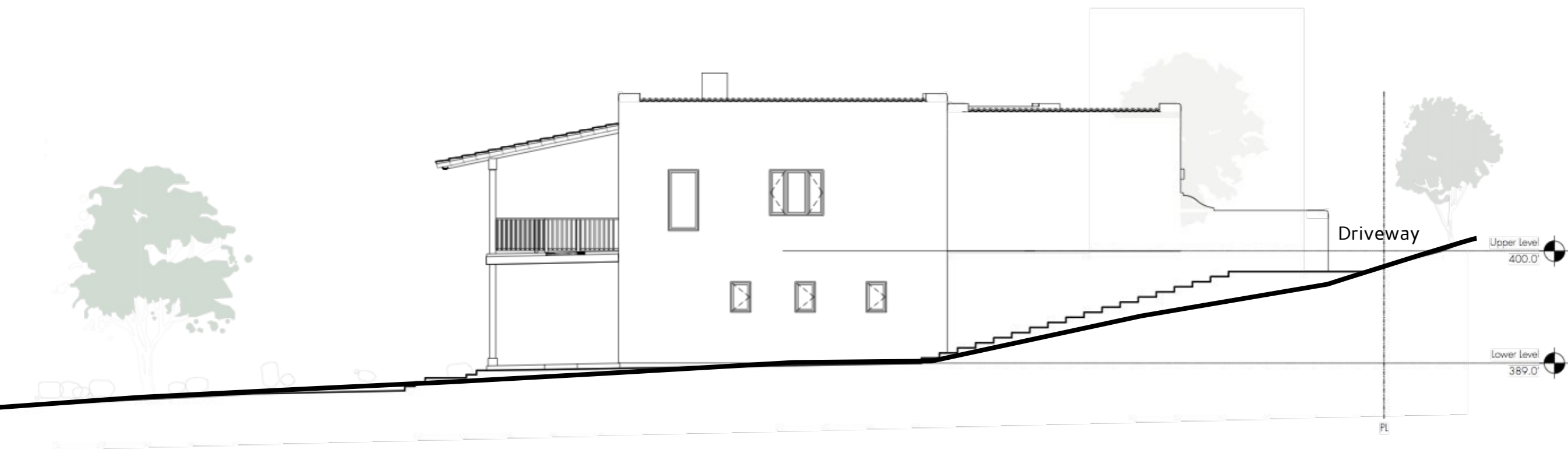




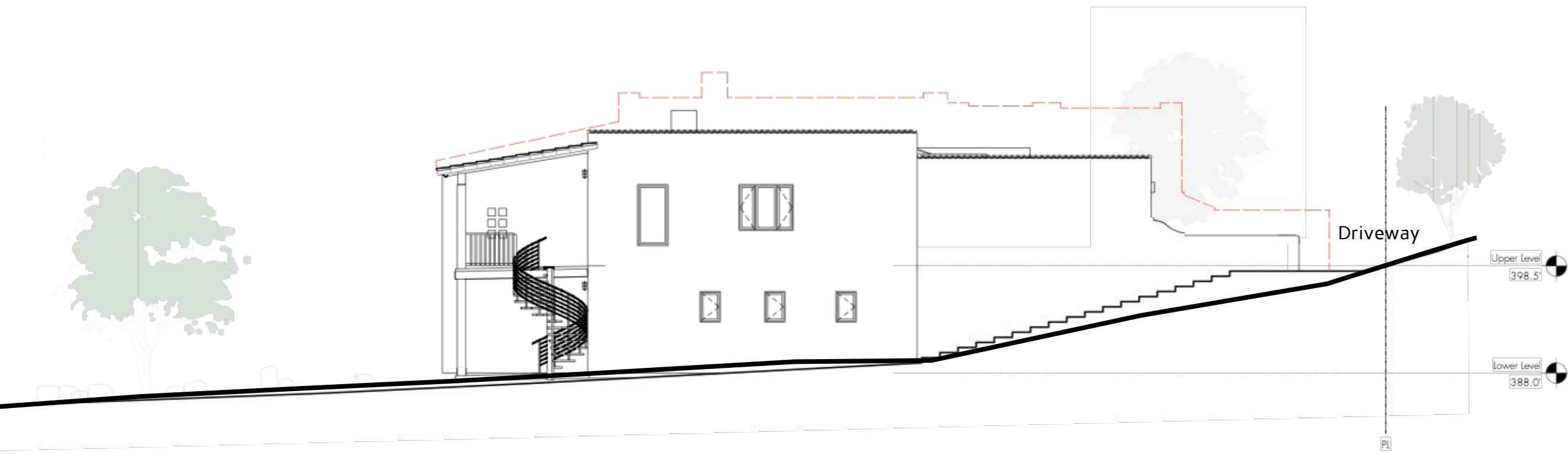
PREVIOUS DESIGN West Elevation



CURRENT DESIGN West Elevation

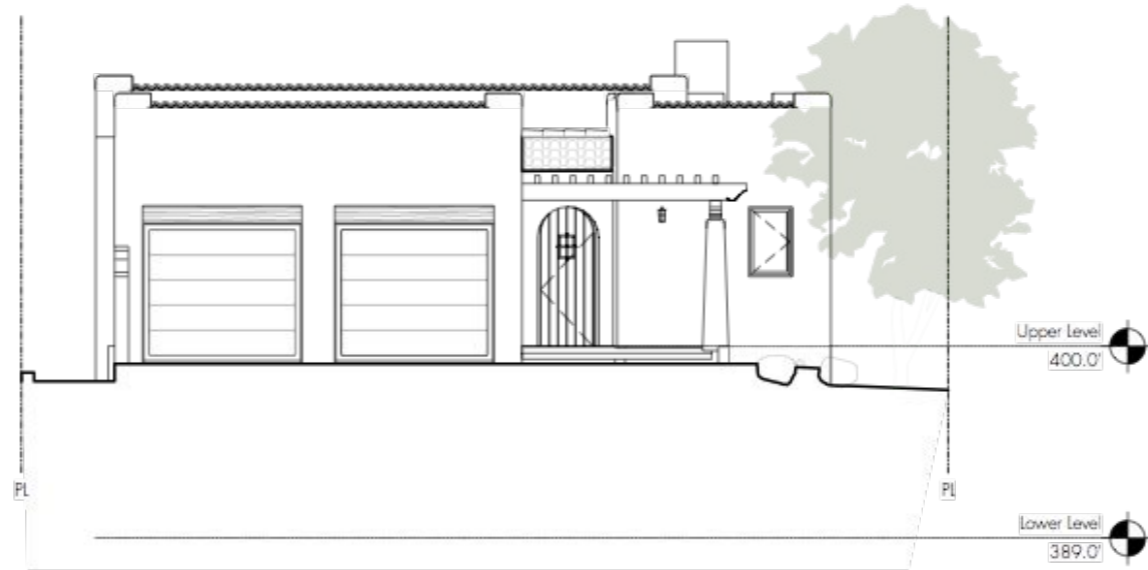


PREVIOUS DESIGN East Elevation



CURRENT DESIGN

East Elevation

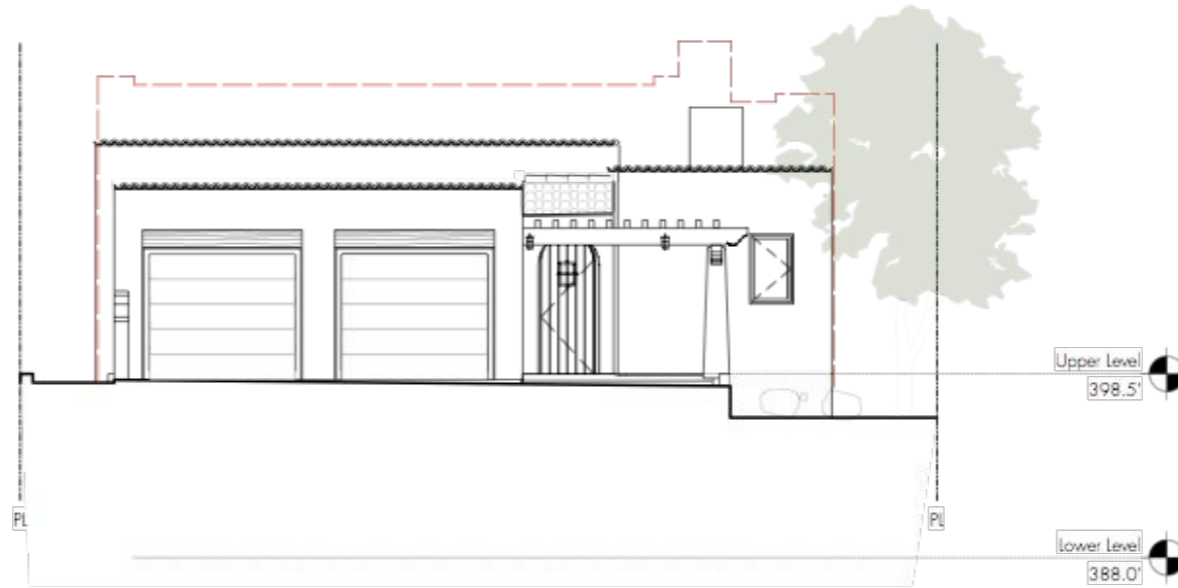


North Elevation



PREVIOUS DESIGN South Elevation

(E) ADJACENT RESIDENCE
STRUCTURE
APN: 023-172-002

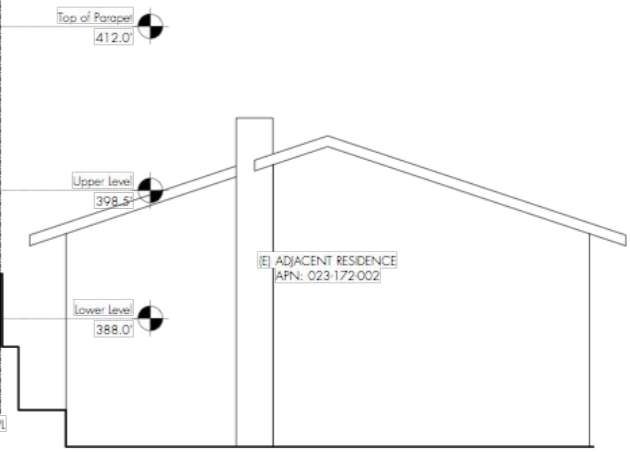
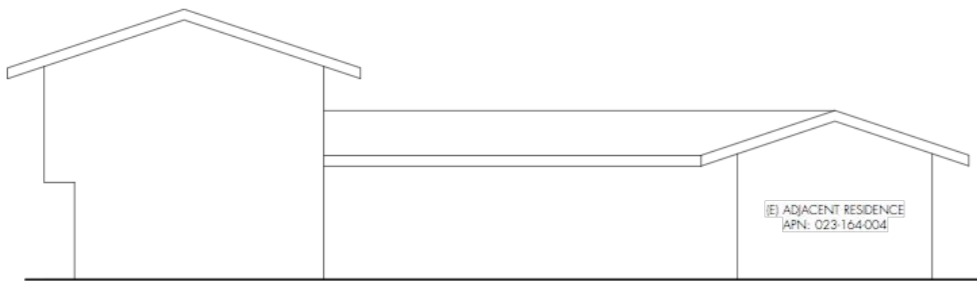


(E) ADJACENT RESIDENCE
STRUCTURE
APN: 023-164-004

North Elevation



CURRENT DESIGN South Elevation



Top of Parapet
412.0'

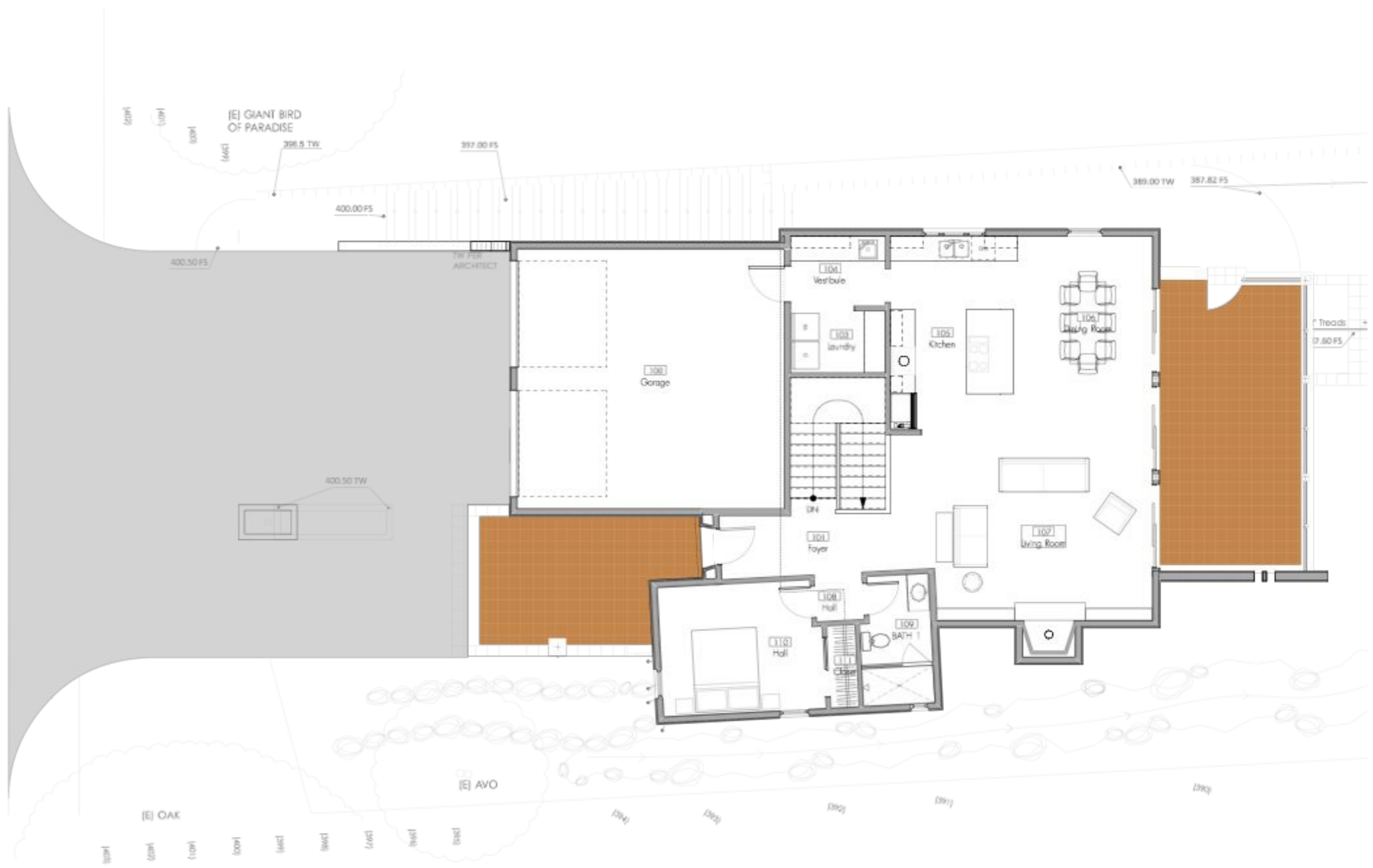
Upper Level
398.5'

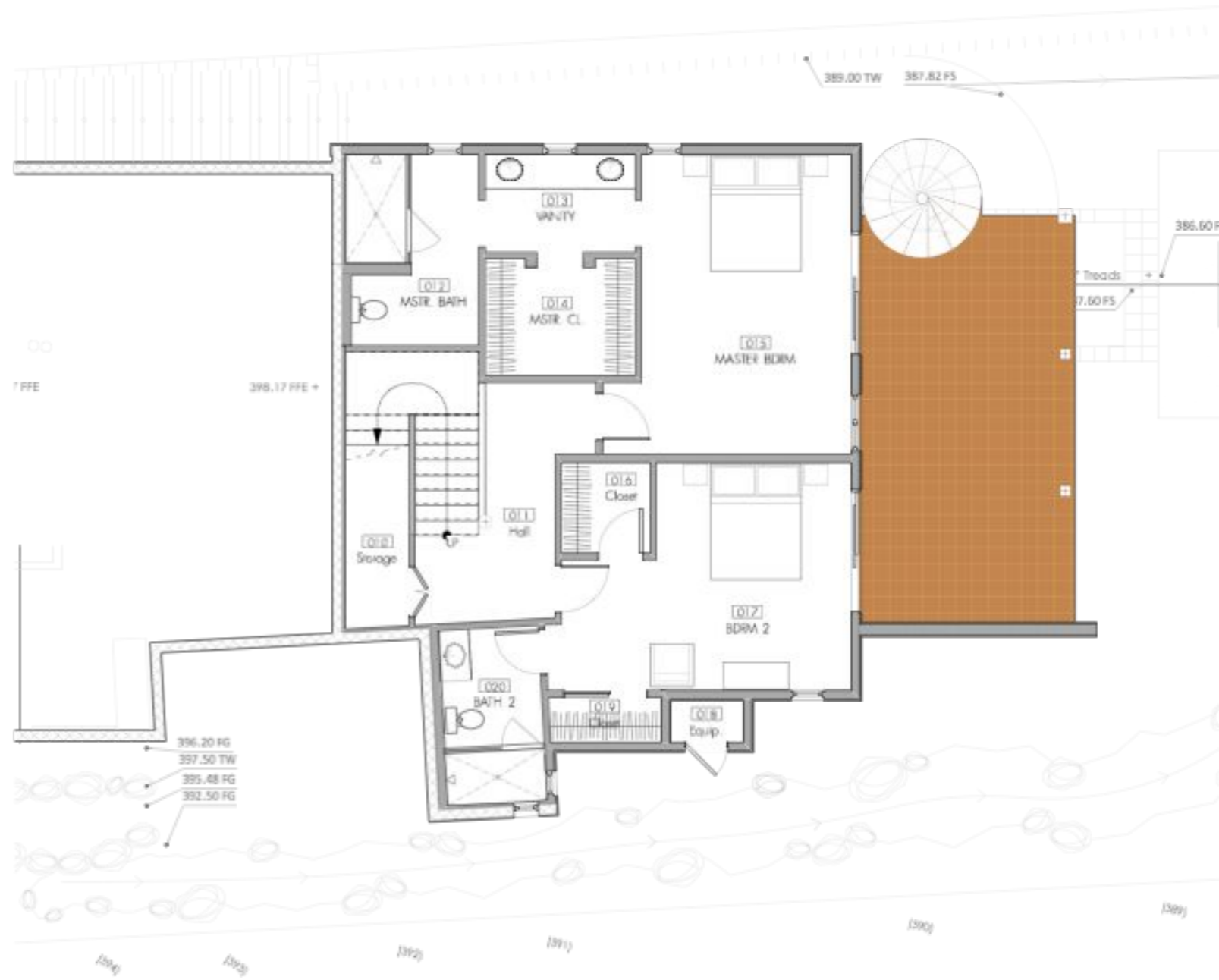
Lower Level
388.0'

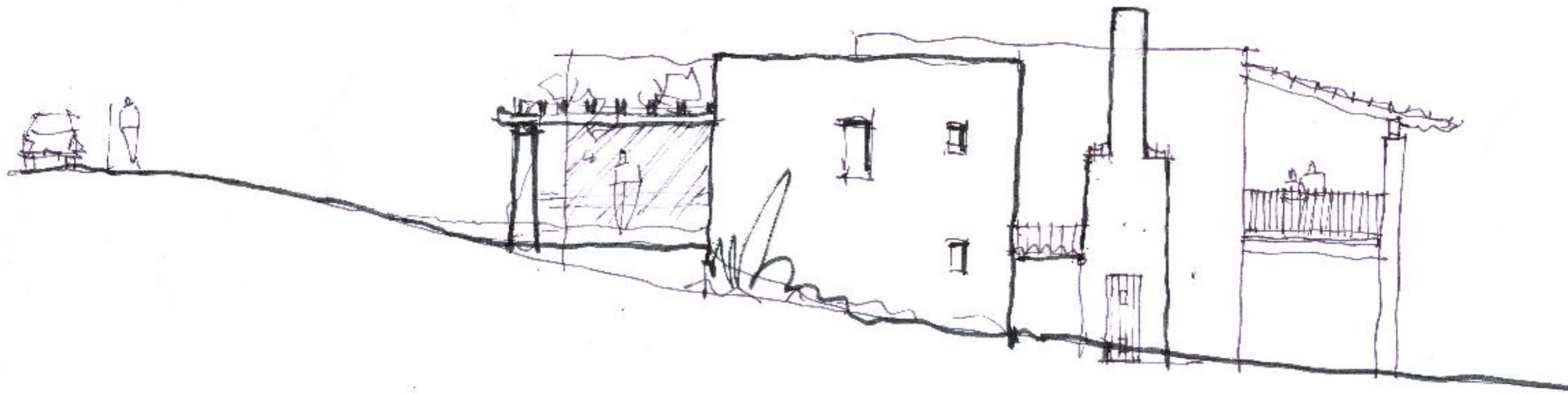
PL

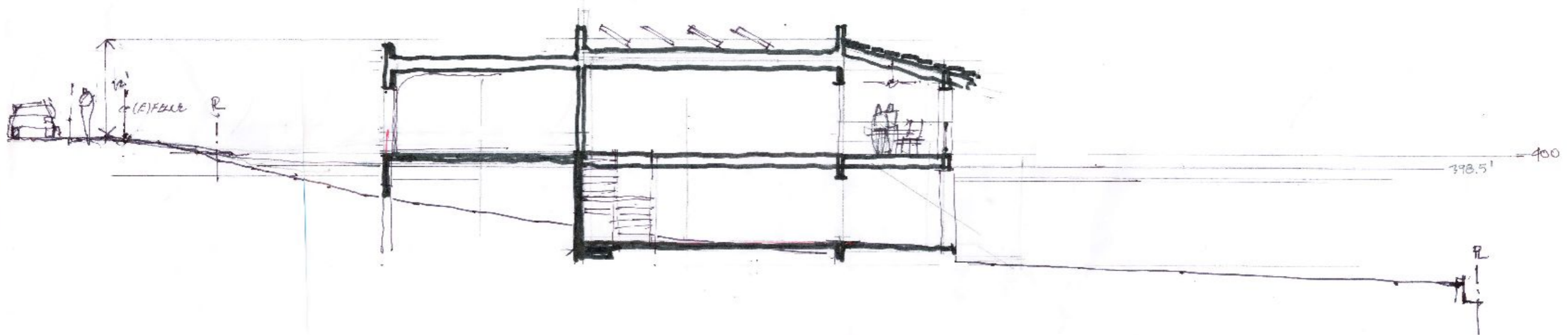
PL

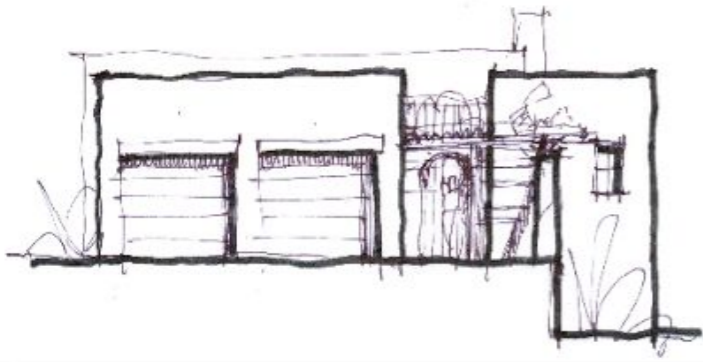
CHELTEENHAM ROAD



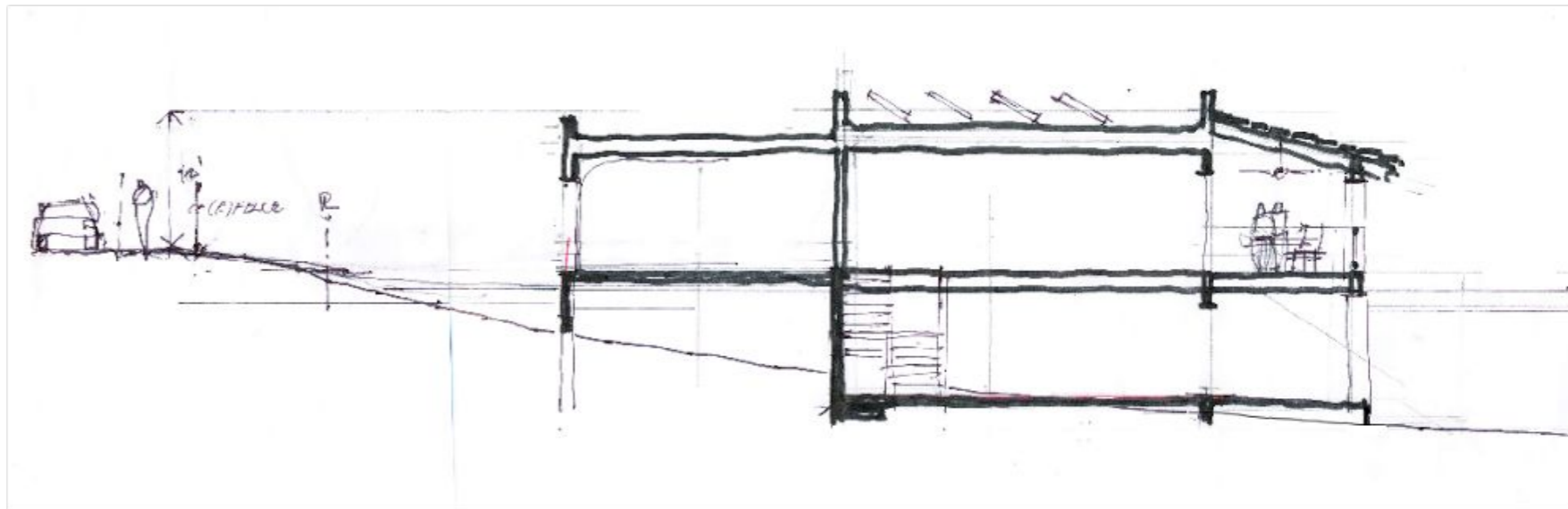
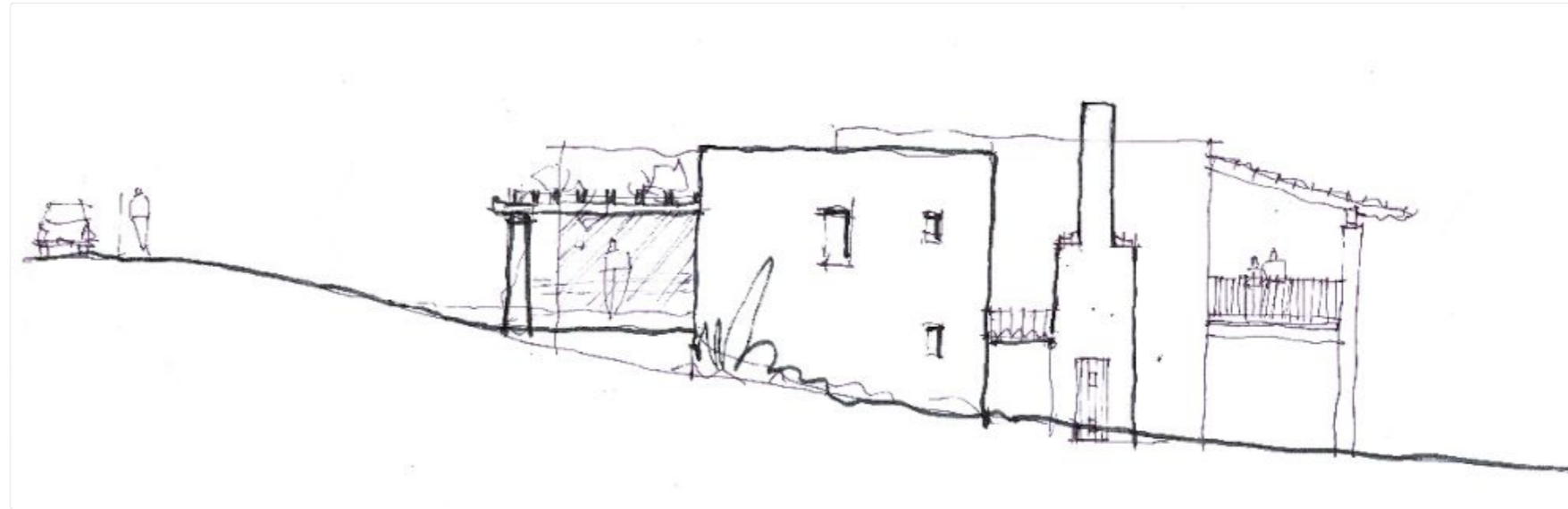








NORTH ELEVATION
Scale: 1/8" = 1'0"























12" PIPE







STOP













851











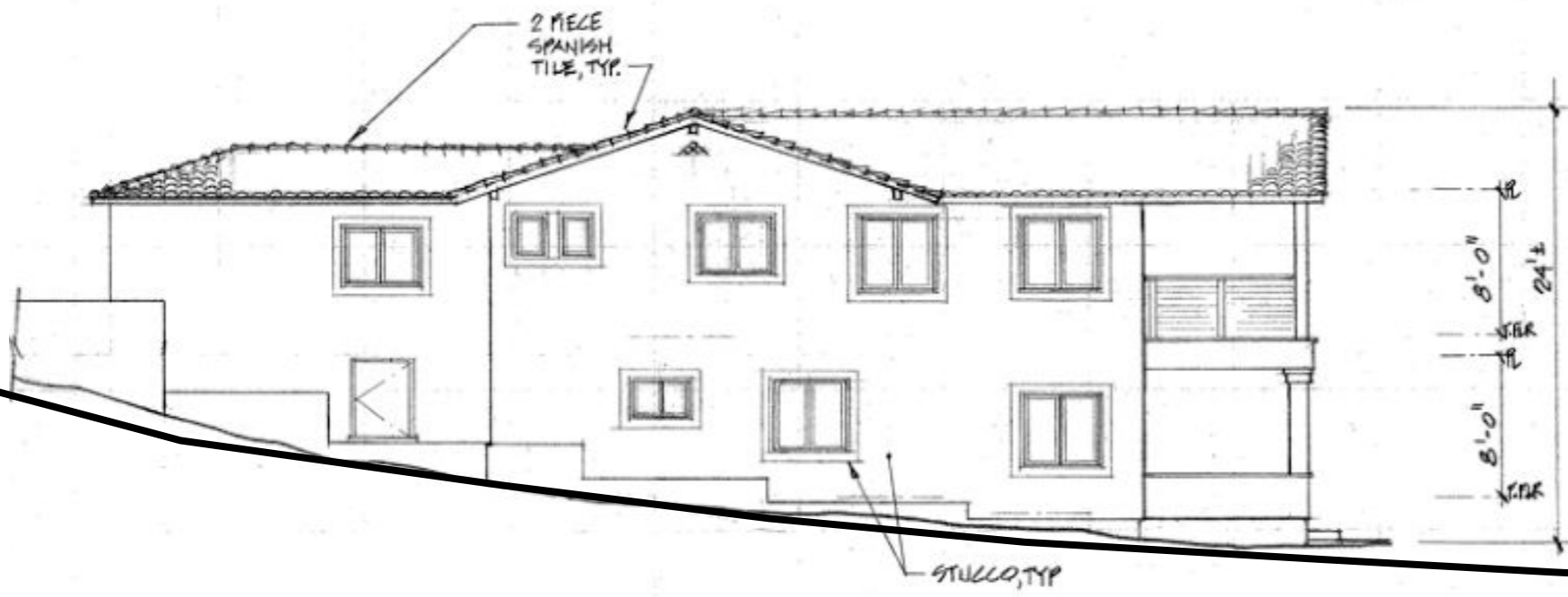
CHELTENHAM





SITE





PREVIOUS West Elevation



PREVIOUS North Elevation



PREVIOUS South Elevation