

OWNER'S STATEMENT

I HEREBY STATE THAT I AM THE OWNER OF OR HAVE AN INTEREST IN THE LAND INCLUDED WITHIN THE SUBDIVISION SHOWN ON THE ANNEXED MAP, AND THAT I AM THE ONLY PERSON WHOSE CONSENT IS NECESSARY TO PASS CLEAR TITLE TO SAID LAND. I CONSENT TO THE PREPARATION AND RECORDATION OF SAID MAP AND SUBDIVISION AS SHOWN WITHIN THE DISTINCTIVE BORDER LINES.

I HEREBY OFFER TO DEDICATE TO THE SANTA BARBARA COUNTY FLOOD CONTROL AND WATER CONSERVATION DISTRICT EASEMENTS FOR INGRESS, EGRESS, DRAINAGE BASINS, STORM DRAIN PIPES, AND RELATED PURPOSES AS SHOWN HEREON.

I ALSO HEREBY OFFER TO DEDICATE TO THE COUNTY OF SANTA BARBARA EASEMENTS FOR PUBLIC MULTI-USE TRAIL AND RELATED PURPOSES AS SHOWN HEREON.

I ALSO HEREBY OFFER TO DEDICATE TO THE LAGUNA COUNTY SANITATION DISTRICT EASEMENTS FOR PUBLIC SANITARY SEWER PURPOSES AS SHOWN HEREON.

I ALSO HEREBY OFFER TO DEDICATE TO THE COUNTY OF SANTA BARBARA EASEMENTS FOR PUBLIC ROAD AND PUBLIC UTILITIES OVER BRADLEY ROAD, VILLAGE DRIVE AND SHULTZ LANE AS SHOWN HEREON.

I ALSO HEREBY OFFER TO DEDICATE TO THE COUNTY OF SANTA BARBARA EASEMENTS FOR PUBLIC MULTI-USE TRAIL INGRESS AND EGRESS AND PUBLIC UTILITIES OVER CHERRY AVENUE, MEEHAN LANE, HICKOK CIRCLE, SANDERS COURT, AND VIGIL CIRCLE AS SHOWN HEREON.

I ALSO HEREBY DEDICATE THE EASEMENTS SHOWN HEREON FOR THE PURPOSES SET FORTH.
NORBERT DICKMAN, TRUSTEE OF THE BARBARA FASKEN 1995 TRUST
FBO ROGER DICKSON, DATED DECEMBER 19, 1995

BY: Norbert Dickman, Trustee
NORBERT DICKMAN, TRUSTEE

NOTARY

A NOTARY PUBLIC OR OTHER OFFICER COMPLETING THIS CERTIFICATE VERIFIES ONLY THE IDENTITY OF THE INDIVIDUAL WHO SIGNED THE DOCUMENT TO WHICH THIS CERTIFICATE IS ATTACHED AND NOT THE TRUTHFULNESS, ACCURACY, OR VALIDITY OF THE DOCUMENT.

STATE OF CALIFORNIA
COUNTY OF SANTA BARBARA

ON 10/28/15 BEFORE ME, Judy Osborn, WHO PROVED TO ME ON THE BASIS OF SATISFACTORY EVIDENCE TO BE THE PERSON(S) WHOSE NAME(S) IS/ARE SUBSCRIBED TO THE WITHIN INSTRUMENT, AND ACKNOWLEDGED TO ME THAT HE/SHE/THEY EXECUTED THE SAME IN HIS/HER/THEIR AUTHORIZED CAPACITY(IES), AND THAT BY HIS/HER/THEIR SIGNATURE(S) ON THE INSTRUMENT, THE PERSON(S) OR THE ENTITY UPON BEHALF OF WHICH THE PERSON(S) ACTED, EXECUTED THE INSTRUMENT.

I CERTIFY UNDER PENALTY OF PERJURY UNDER THE LAWS OF THE STATE OF CALIFORNIA THAT THE FOREGOING PARAGRAPH IS TRUE AND CORRECT.

WITNESS MY HAND AND OFFICIAL SEAL:

SIGNATURE: Judy Osborn

NAME PRINTED Judy Osborn, Notary Public

COMMISSION EXPIRES Dec 6, 2017

COMMISSION No. 2048531

PRINCIPAL OFFICE LOCATED IN THE COUNTY OF Santa Barbara

FINAL MAP NO. 14,739

COUNTY OF SANTA BARBARA, STATE OF CALIFORNIA

BEING A SUBDIVISION OF THE SOUTH HALF OF THE NORTHEAST QUARTER OF SECTION 11, TOWNSHIP 9 NORTH, RANGE 34 WEST, SAN BERNARDINO MERIDIAN, IN THE COUNTY OF SANTA BARBARA, STATE OF CALIFORNIA, ACCORDING TO THE OFFICIAL PLAT THEREOF.

SHEET 1 OF 9 SHEETS



2646 Santa Maria Way, Suite 107, Santa Maria, CA 93455
Phone: (805) 925-2345 Fax: (805) 925-1539

SIGNATURE OMISSIONS

EASEMENT HOLDERS

THE SIGNATURES OF THE FOLLOWING EASEMENT HOLDERS HAVE BEEN OMITTED PURSUANT TO SECTION 66436(a)(3)(B) OF THE GOVERNMENT CODE (STATE SUBDIVISION MAP ACT):

COUNTY OF SANTA BARBARA, EASEMENT HOLDER FOR PUBLIC ROAD AND INCIDENTAL PURPOSES PER DOCUMENT RECORDED APRIL 26, 1962 AS INSTRUMENT NO. 17041 IN BOOK 1922, PAGE 388 OF OFFICIAL RECORDS.

COUNTY OF SANTA BARBARA, EASEMENT HOLDER FOR CUT AND FILL SLOPES AND INCIDENTAL PURPOSES PER DOCUMENT RECORDED MARCH 6, 1974 AS INSTRUMENT NO. 7844 IN BOOK 2505, PAGE 284 OF OFFICIAL RECORDS. **NOT PLOTTABLE OF RECORD**

MCCADDEN DEVELOPMENT, LLC, A DELAWARE LIMITED LIABILITY COMPANY, EASEMENT HOLDER FOR WATER WELL AND RELATED PURPOSES PER DOCUMENT RECORDED APRIL 6, 2005 AS INSTRUMENT NO. 2005-31228 OF OFFICIAL RECORDS.

SANTA MARIA PUBLIC AIRPORT DISTRICT, A PUBLIC AIRPORT DISTRICT OF THE STATE OF CALIFORNIA, HOLDER OF AN EASEMENT FOR AVIGATION PURPOSES RECORDED SEPTEMBER 29, 2015 AS INSTRUMENT NO. 2015-0051959 OF OFFICIAL RECORDS.

ABANDONMENT

THE FOLLOWING EASEMENTS ARE TO BE ABANDONED BY THIS MAP PER GOVERNMENT CODE SECTION 66434(g) (STATE SUBDIVISION MAP ACT):

1. EASEMENT FOR PUBLIC ROAD AND INCIDENTAL PURPOSES PER DOCUMENT RECORDED APRIL 26, 1962 AS INSTRUMENT NO. 17041 IN BOOK 1922, PAGE 388 OF OFFICIAL RECORDS.

2. EASEMENT FOR CUT AND FILL SLOPES AND INCIDENTAL PURPOSES PER DOCUMENT RECORDED MARCH 6, 1974 AS INSTRUMENT NO. 7844 IN BOOK 2505, PAGE 284 OF OFFICIAL RECORDS.

NOTE

THIS MAP IS SUBJECT TO CERTAIN CONDITIONS AND INFORMATION INCLUDED IN A "NOTICE" AND RECORDED CONCURRENTLY AS INSTRUMENT NO. _____ O.R.

RECORDER'S STATEMENT

FILED THIS _____ DAY OF _____, 20____, AT _____ M. IN BOOK _____, OF MAPS AT PAGES _____ AT THE REQUEST OF STANTEC CONSULTING

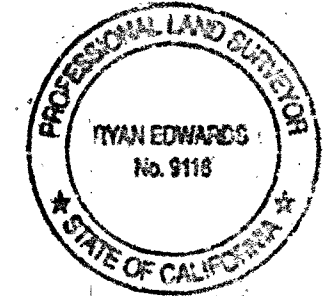
FEE: _____

JOSEPH E. HOLLAND BY: _____
COUNTY CLERK-RECORDER-ASSESSOR DEPUTY

SURVEYOR'S STATEMENT

THIS MAP WAS PREPARED BY ME OR UNDER MY DIRECTION AND IS BASED UPON A FIELD SURVEY IN CONFORMANCE WITH THE REQUIREMENTS OF THE SUBDIVISION MAP ACT AND LOCAL ORDINANCE AT THE REQUEST OF VERNON CONSTRUCTION, INC. IN OCTOBER 2014. I HEREBY STATE THAT ALL THE MONUMENTS ARE OF THE CHARACTER AND OCCUPY THE POSITIONS INDICATED OR THAT THEY WILL BE SET IN THOSE POSITIONS WITHIN ONE YEAR FROM THE RECORDATION OF THIS MAP, AND THAT THE MONUMENTS ARE, OR WILL BE, SUFFICIENT TO ENABLE THE SURVEY TO BE RETRACED, AND THAT THIS FINAL MAP SUBSTANTIALLY CONFORMS TO THE CONDITIONALLY APPROVED TENTATIVE MAP.

Ryan Edwards 10-3-2015
RYAN A. EDWARDS DATE
PLS NO. 9116



COUNTY SURVEYOR'S STATEMENT

I HEREBY STATE THAT I HAVE EXAMINED THIS MAP, THAT THE SUBDIVISION AS SHOWN IS SUBSTANTIALLY THE SAME AS IT APPEARED ON THE TENTATIVE MAP, IF REQUIRED, AND ANY APPROVED ALTERATIONS THEREOF, THAT ALL PROVISIONS OF CHAPTER 2 OF THE SUBDIVISION MAP ACT AND ANY LOCAL ORDINANCES APPLICABLE AT THE TIME OF THE TENTATIVE MAP, IF REQUIRED, HAVE BEEN COMPLIED WITH AND THAT I AM SATISFIED THAT THE MAP IS TECHNICALLY CORRECT.

Aleksandar Jevremovic 12/31/2015
ALEKSANDAR JEVREMOVIC, PLS NO. 8378 DATE
COUNTY SURVEYOR
LICENSE EXPIRATION DATE: 12/31/2015

CLERK OF THE BOARD'S STATEMENT

I, MONA MIYASATO, CLERK OF THE BOARD OF SUPERVISORS OF SANTA BARBARA COUNTY, DO

HEREBY STATE THAT ON _____, 2016, I WAS DULY AUTHORIZED AND DIRECTED TO ENDORSE HEREON THE BOARD'S APPROVAL AND ACCEPTANCE OF EASEMENTS FOR PUBLIC MULTI-USE TRAIL AND RELATED PURPOSES; I HEREBY ALSO ACCEPT THE EASEMENTS FOR PUBLIC ROAD AND PUBLIC UTILITIES OVER BRADLEY ROAD, VILLAGE DRIVE, AND SHULTZ LANE; I HEREBY ALSO ACCEPT THE EASEMENTS FOR PUBLIC PEDESTRIAN INGRESS AND EGRESS AND PUBLIC UTILITIES OVER CHERRY AVENUE, MEEHAN LANE, HICKOK CIRCLE, SANDERS COURT, VIGIL CIRCLE, VILLAGE DRIVE AND SHULTZ LANE; I HEREBY ALSO ACCEPT THE ABANDONMENT OF EASEMENTS FOR PUBLIC ROAD AND CUT AND FILL SLOPES AS NOTED HEREON. I FURTHERMORE STATE THAT PURSUANT TO GOVERNMENT CODE SECTION 66464 (STATE SUBDIVISION MAP ACT), THAT THE CERTIFICATES AND DEPOSITS REQUIRED UNDER GOVERNMENT CODE SECTION 66492 AND 66493 (STATE SUBDIVISION MAP ACT) ON THE PROPERTY WITHIN THIS SUBDIVISION HAVE BEEN FILED AND MADE.

MONA MIYASATO BY: _____
CLERK OF THE BOARD OF SUPERVISORS DEPUTY
OF SANTA BARBARA COUNTY DATE

BOARD OF DIRECTOR'S STATEMENT

I, MONA MIYASATO, CLERK OF THE BOARD OF DIRECTORS OF THE SANTA BARBARA COUNTY FLOOD CONTROL AND WATER CONSERVATION DISTRICT, DO HEREBY STATE THAT ON

_____, 2016, I WAS DULY AUTHORIZED AND DIRECTED TO ENDORSE HEREON THE BOARD'S APPROVAL AND ACCEPTANCE OF EASEMENTS FOR INGRESS, EGRESS, DRAINAGE BASINS, STORM DRAIN PIPES, AND RELATED PURPOSES AS SHOWN ON THIS MAP.

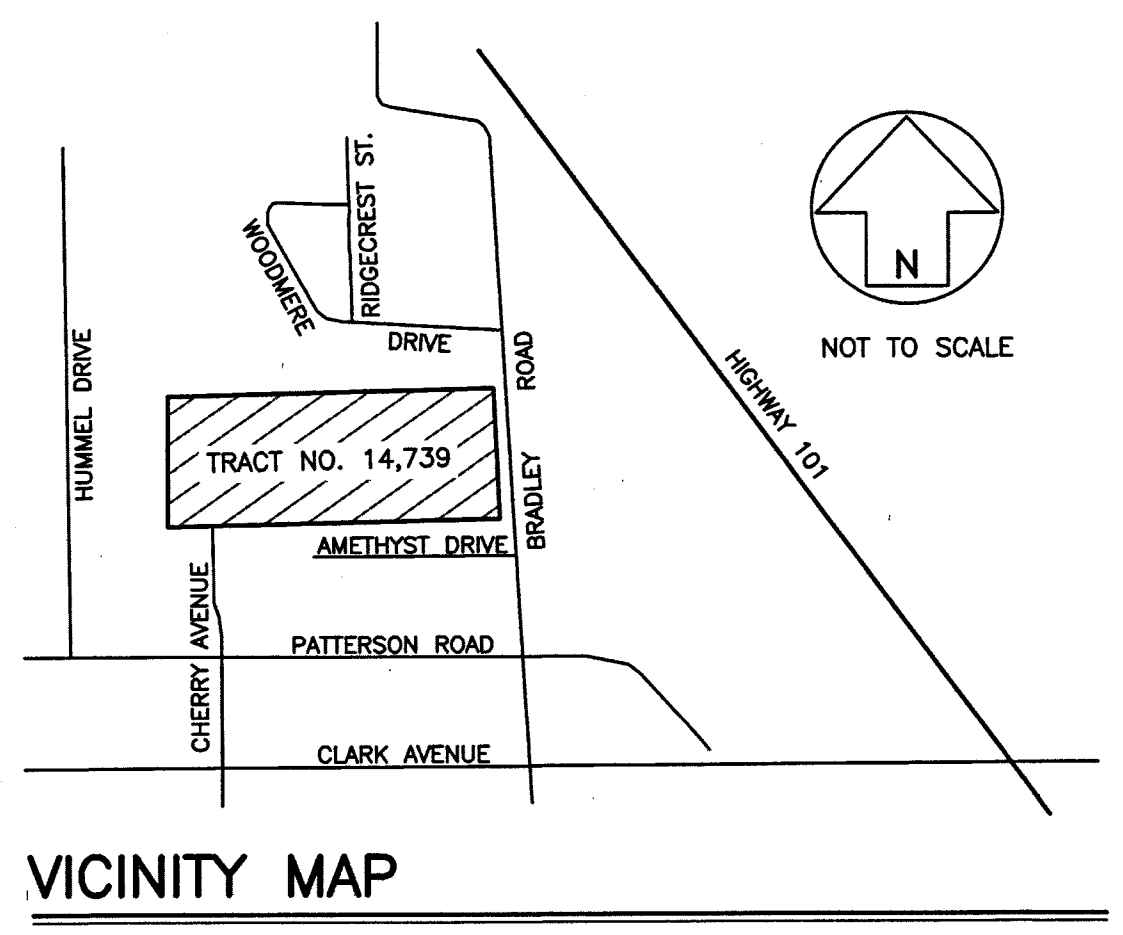
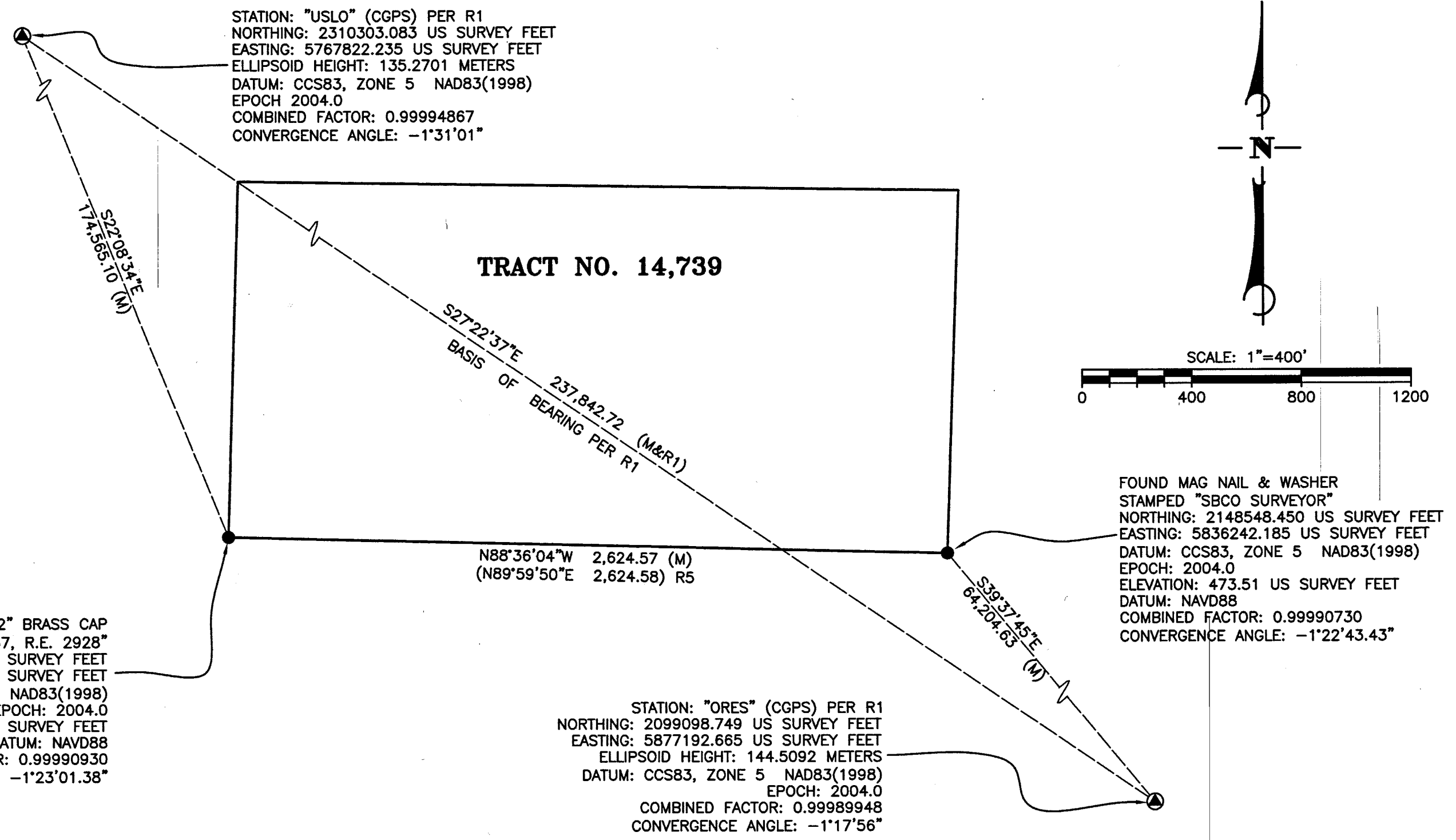
MONA MIYASATO BY: _____
CLERK OF THE BOARD OF DIRECTORS DEPUTY
SANTA BARBARA COUNTY FLOOD CONTROL DATE
AND WATER CONSERVATION DISTRICT

BOARD OF DIRECTOR'S STATEMENT

I, MONA MIYASATO, CLERK OF THE BOARD OF DIRECTORS OF THE LAGUNA COUNTY SANITATION

DISTRICT, DO HEREBY STATE THAT ON _____, 2016, I WAS DULY AUTHORIZED AND DIRECTED TO ENDORSE HEREON THE BOARD'S APPROVAL AND ACCEPTANCE OF EASEMENTS FOR PUBLIC SANITARY SEWER PURPOSES AS SHOWN ON THIS MAP.

MONA MIYASATO BY: _____
CLERK OF THE BOARD OF DIRECTORS DEPUTY
LAGUNA COUNTY SANITATION DISTRICT DATE



TIES TO CALIFORNIA COORDINATE SYSTEM

SURVEYOR'S NOTES

- ALL COORDINATES, DISTANCES AND BEARINGS SHOWN ON THIS MAP ARE REFERENCED TO THE CALIFORNIA COORDINATE SYSTEM, NAD83, ZONE 5 GRID, EPOCH 2004.0 DISTANCES AND COORDINATES ARE EXPRESSED IN U.S. SURVEY FOOT UNITS.
- ALL OTHER DISTANCES SHOWN ON THIS MAP HAVE BEEN SCALED TO GROUND AND ARE EXPRESSED IN US SURVEY FOOT UNITS. THE SITE COMBINATION FACTOR IS 0.99990930, AND THE SITE MAPPING ANGLE IS -1°23'01.38", BOTH CALCULATED AT THE MONUMENT LOCATED AT THE SOUTHWEST CORNER OF TRACT 14739. TO OBTAIN GRID LEVEL DISTANCES, MULTIPLE GROUND DISTANCES BY THE PROJECT COMBINATION FACTOR. TO OBTAIN TRUE AZIMUTH, ADD THE MAPPING ANGLE TO THE GRID AZIMUTH.
- ELEVATIONS HAVE BEEN DETERMINED USING GEOID MODELING, ARE EXPRESSED IN U.S. SURVEY FEET AND ARE REFERENCED TO THE NORTH AMERICAN VERTICAL DATUM OF 1988 (NAVD88) DEFINED LOCALLY BY CSRC CGPS STATION "USLO". THE ELEVATION AT THE GROUND REFERENCE MARK OF "USLO" IS 557.03 FEET, AND WAS DETERMINED AS PART OF THE "DIFFERENTIAL LEVELING TO CGPS STATIONS IN SOUTHERN CALIFORNIA" PROJECT EXECUTED BY THE CALIFORNIA SPATIAL REFERENCE CENTER IN 2004 PER R11.
- COMBINED FACTORS ARE THE PRODUCT OF THE ELEVATION FACTOR TIMES THE CCS83 SCALE FACTOR. ELEVATION FACTORS WERE COMPUTED USING A VALUE OF 20,906,000 FEET AS THE RADIUS OF CURVATURE OF THE EARTH AND THE GEOID MODEL AT THE STATION. THE GEOID HEIGHT WAS INTERPOLATED FROM THE NGS GEOID12A GEOID MODEL.

LEGEND

- | | |
|--------|--|
| CF | CALCULATED FROM CONTINUOUS GPS STATION |
| CGPS | CALIFORNIA SPATIAL REFERENCE CENTER |
| CSRC | CALIFORNIA SPATIAL REFERENCE NETWORK |
| CSRN | CORNER RECORD |
| CR | FROM TRUE CORNER |
| FTC | GROSS SQUARE FEET |
| G.S.F. | MEASURED |
| M | MAP BOOK |
| MB | NET SQUARE FEET |
| N.S.F. | OFFICIAL RECORDS |
| O.R. | PUBLIC UTILITY EASEMENT |
| P.U.E. | PARCEL MAP BOOK |
| PM | RECORD OF SURVEY |
| RS | RIGHT OF WAY |
| R.O.W. | |
- CONTINUOUS GPS STATION (CGPS)
 - FOUND MONUMENT AS NOTED
 - SET 1/2" IRON PIPE WITH TAG STAMPED "PLS 9116"
 - SET LEAD & TACK WITH TAG STAMPED "PLS 9116" SET ON LOT LINE, ON TOP OF CURB, 18.25' FROM STREET CENTERLINE WHERE CURB IS CONCENTRIC WITH CENTERLINE
 - ⊙ SET 2" IRON PIPE WITH 2" ALUMINUM CAP STAMPED "PLS 9116"
 - ⊗ SET SPIKE AND WASHER STAMPED "PLS 9116"
 - ▲ SET 2" IRON PIPE WITH 2" ALUMINUM CAP STAMPED "PLS 9116", IN MONUMENT WELL

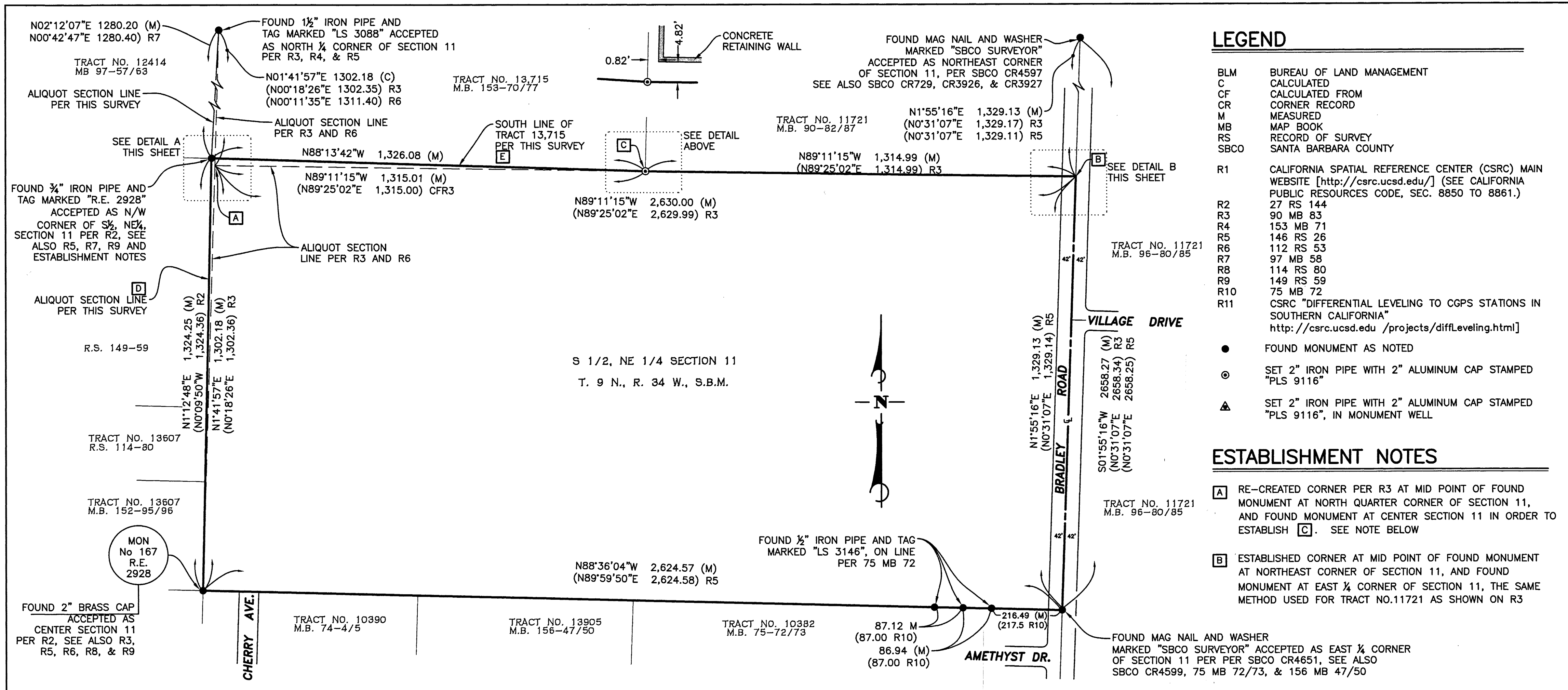
BASIS OF BEARINGS

BEARINGS SHOWN ON THIS MAP ARE BASED ON THE CALIFORNIA COORDINATE SYSTEM, NAD83, ZONE 5 GRID NAD83(1998), EPOCH 2004.0, DEFINED LOCALLY BY THE CALIFORNIA SPATIAL REFERENCE NETWORK OPERATED BY THE CALIFORNIA SPATIAL REFERENCE CENTER. THIS SURVEY TIED TO STATIONS "ORES", AND "USLO" OF THE NETWORK AS SHOWN ON THE "TIES TO CALIFORNIA COORDINATE SYSTEM" DIAGRAM ON THIS SHEET.

REFERENCES

- R1 CALIFORNIA SPATIAL REFERENCE CENTER (CSRC) MAIN WEBSITE [http://csrc.ucsd.edu/] (SEE CALIFORNIA PUBLIC RESOURCES CODE, SEC. 8850 TO 8861.)
- R2 27 RS 144
- R3 90 MB 83
- R4 153 MB 71
- R5 146 RS 26
- R6 112 RS 53
- R7 97 MB 58
- R8 114 RS 80
- R11 CSRC "DIFFERENTIAL LEVELING TO CGPS STATIONS IN SOUTHERN CALIFORNIA" [http://csrc.ucsd.edu/projects/diffLeveling.html]

FINAL MAP NO. 14,739
 COUNTY OF SANTA BARBARA
 SHEET 2 OF 9 SHEETS



LEGEND

- BLM BUREAU OF LAND MANAGEMENT
- C CALCULATED
- CF CALCULATED FROM
- CR CORNER RECORD
- M MEASURED
- MB MAP BOOK
- RS RECORD OF SURVEY
- SBCO SANTA BARBARA COUNTY

- R1 CALIFORNIA SPATIAL REFERENCE CENTER (CSRC) MAIN WEBSITE [http://csrc.ucsd.edu/] (SEE CALIFORNIA PUBLIC RESOURCES CODE, SEC. 8850 TO 8861.)
- R2 27 RS 144
- R3 90 MB 83
- R4 153 MB 71
- R5 146 RS 26
- R6 112 RS 53
- R7 97 MB 58
- R8 114 RS 80
- R9 149 RS 59
- R10 75 MB 72
- R11 CSRC "DIFFERENTIAL LEVELING TO CGPS STATIONS IN SOUTHERN CALIFORNIA" http://csrc.ucsd.edu /projects/diffLeveling.html]

- FOUND MONUMENT AS NOTED
- ⊙ SET 2" IRON PIPE WITH 2" ALUMINUM CAP STAMPED "PLS 9116"
- ▲ SET 2" IRON PIPE WITH 2" ALUMINUM CAP STAMPED "PLS 9116", IN MONUMENT WELL

ESTABLISHMENT NOTES

- [A]** RE-CREATED CORNER PER R3 AT MID POINT OF FOUND MONUMENT AT NORTH QUARTER CORNER OF SECTION 11, AND FOUND MONUMENT AT CENTER SECTION 11 IN ORDER TO ESTABLISH **[C]**. SEE NOTE BELOW
- [B]** ESTABLISHED CORNER AT MID POINT OF FOUND MONUMENT AT NORTHEAST CORNER OF SECTION 11, AND FOUND MONUMENT AT EAST 1/4 CORNER OF SECTION 11, THE SAME METHOD USED FOR TRACT NO.11721 AS SHOWN ON R3

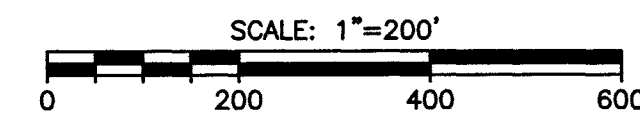
ESTABLISHMENT NOTES (CONTINUED)

- [C]** ESTABLISHED CORNER AT RECORD DISTANCE (1,314.99) FROM **[B]**, PER R3, IN THE DIRECTION OF ESTABLISHED POINT **[A]**. SEARCHED FOR 1 1/2" IRON PIPE PER R3, NOTHING FOUND. SET 2" IRON PIPE WITH 2" ALUMINUM CAP STAMPED "PLS 9116"
- [D]** THIS LINE WAS SURVEYED AND MONUMENTED IN 1946 BY KENNETH WRIGHT AS SHOWN ON R2. HIS SURVEY WAS BASED ON EVIDENCE OF OCCUPATION (FENCES) IN EXISTENCE AT THE TIME AND HE MADE NO ATTEMPT TO RESURVEY THE ENTIRETY OF SECTION 11
- [E]** THIS LINE WAS HELD AS THE SOUTH LINE OF TRACT 13715 PER R7. SAID MAP ALSO MAKES POINT **[C]** AN ANGLE POINT TO KEEP HARMONY WITH TRACT 11721 (R3) AND LONG STANDING MONUMENTS.

NOTE: IT WAS NECESSARY TO REJECT POINT **[A]** AS THE NORTHWEST CORNER OF SOUTH 1/2 OF THE NORTHEAST 1/4 OF SECTION 11 PER R3 AND R6 AND CREATE AN ANGLE POINT AT POINT **[C]** IN ORDER TO KEEP HARMONY WITH TRACT 11,721 PER R3 AND THE 3/4" IRON PIPE AND TAG MARKED "RE 2928" PER R2 WHICH WAS SET BASED ON OCCUPATION IN 1946 AND WAS ALSO THE BASIS OF SUBSEQUENT BOUNDARY LINES. USING POINT **[A]** OR THE 2" IRON PIPE 0.12' FROM POINT **[A]** WOULD BE IN CONFLICT WITH LONG STANDING OCCUPATION AND CREATE GAPS AND ENCROACHMENTS.

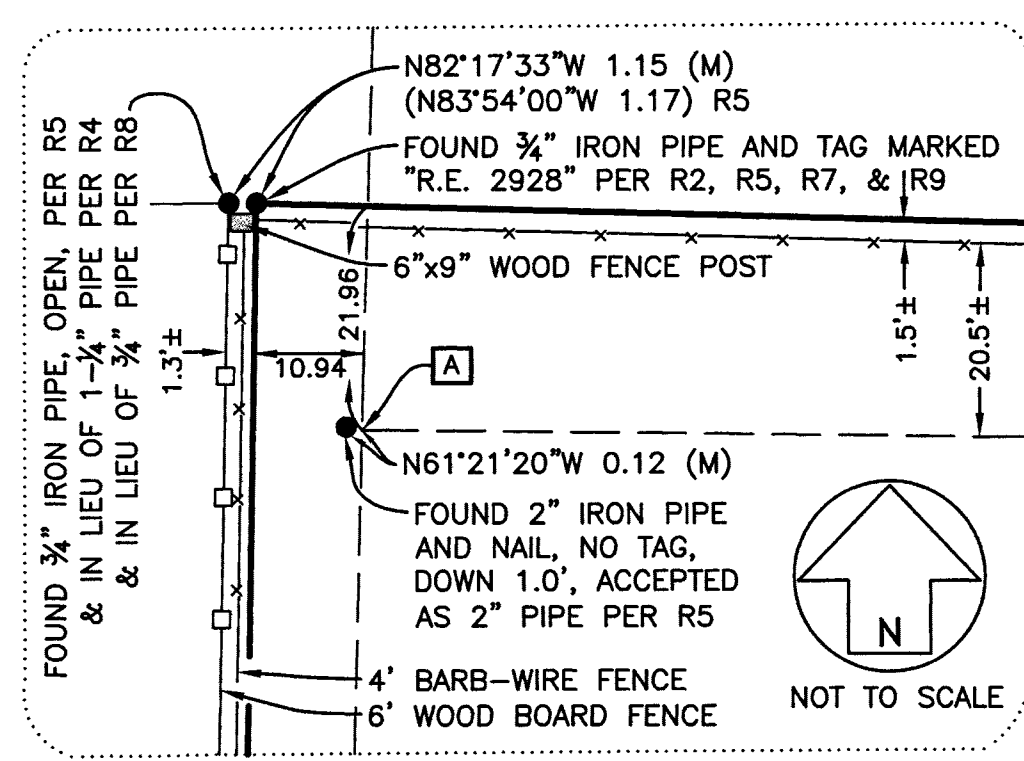
BASIS OF BEARINGS

BEARINGS SHOWN ON THIS MAP ARE BASED ON THE CALIFORNIA COORDINATE SYSTEM, NAD83, ZONE 5 GRID NAD83(1998), EPOCH 2004.0, DEFINED LOCALLY BY THE CALIFORNIA SPATIAL REFERENCE NETWORK OPERATED BY THE CALIFORNIA SPATIAL REFERENCE CENTER. THIS SURVEY TIED TO STATIONS "ORES", AND "USLO" OF THE NETWORK AS SHOWN ON THE "TIES TO CALIFORNIA COORDINATE SYSTEM" DIAGRAM ON SHEET 2.



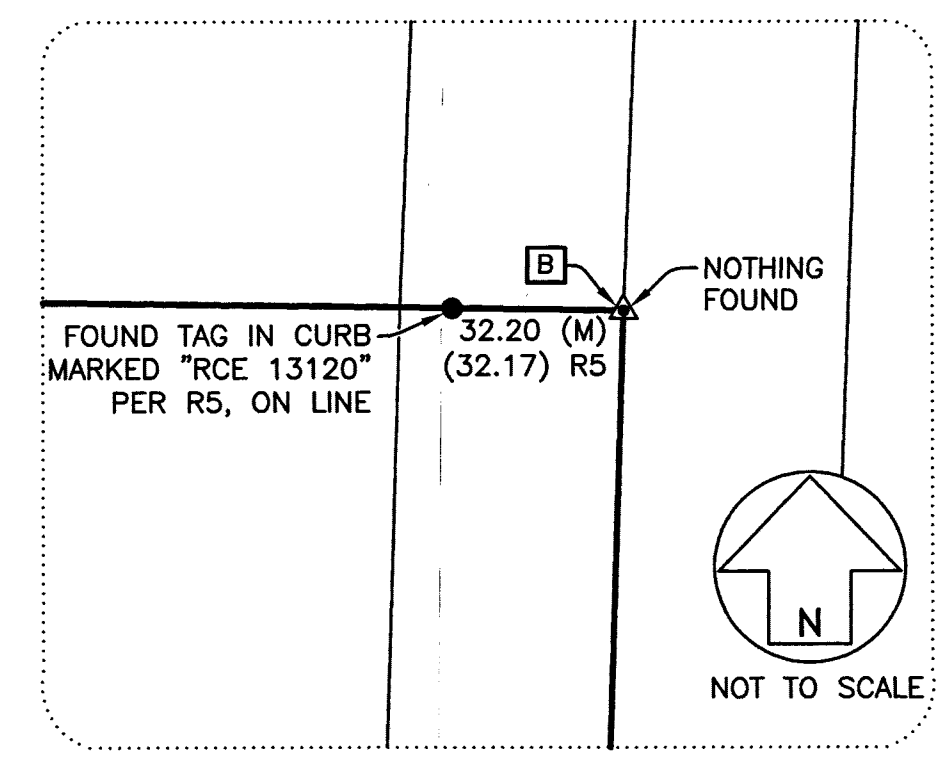
FINAL MAP NO. 14,739
 COUNTY OF SANTA BARBARA
 SHEET 3 OF 9 SHEETS

P.N. 2064017239
 February 2016

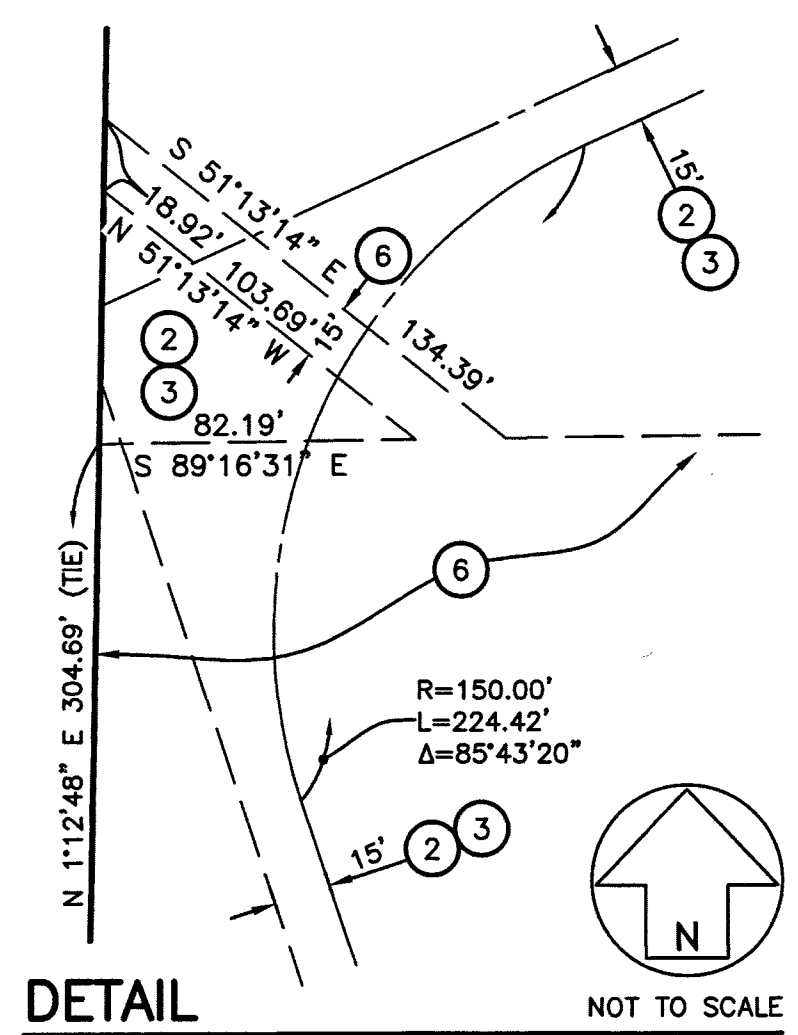
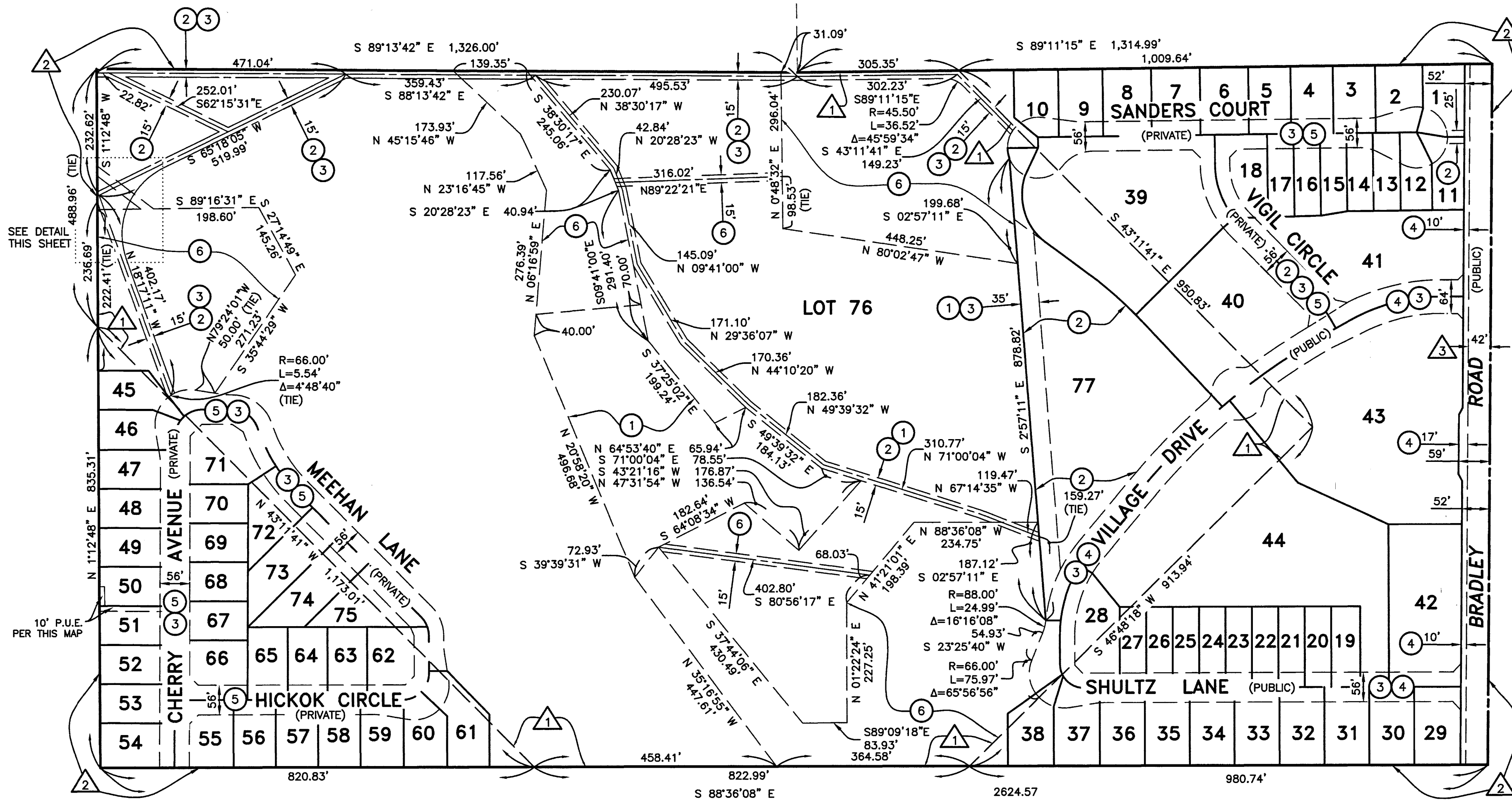


DETAIL A

NOTE: R5 DEMONSTRATES THE RELATIONSHIP BETWEEN THE 3/4" OPEN PIPE AND THE PIPE TAGGED "R.E. 2928". THE OPEN PIPE WAS FOUND ENCASED IN CONCRETE FOOTING WITH TOP FLARED, BEING OVER 1" IN OUTSIDE DIAMETER.



DETAIL B

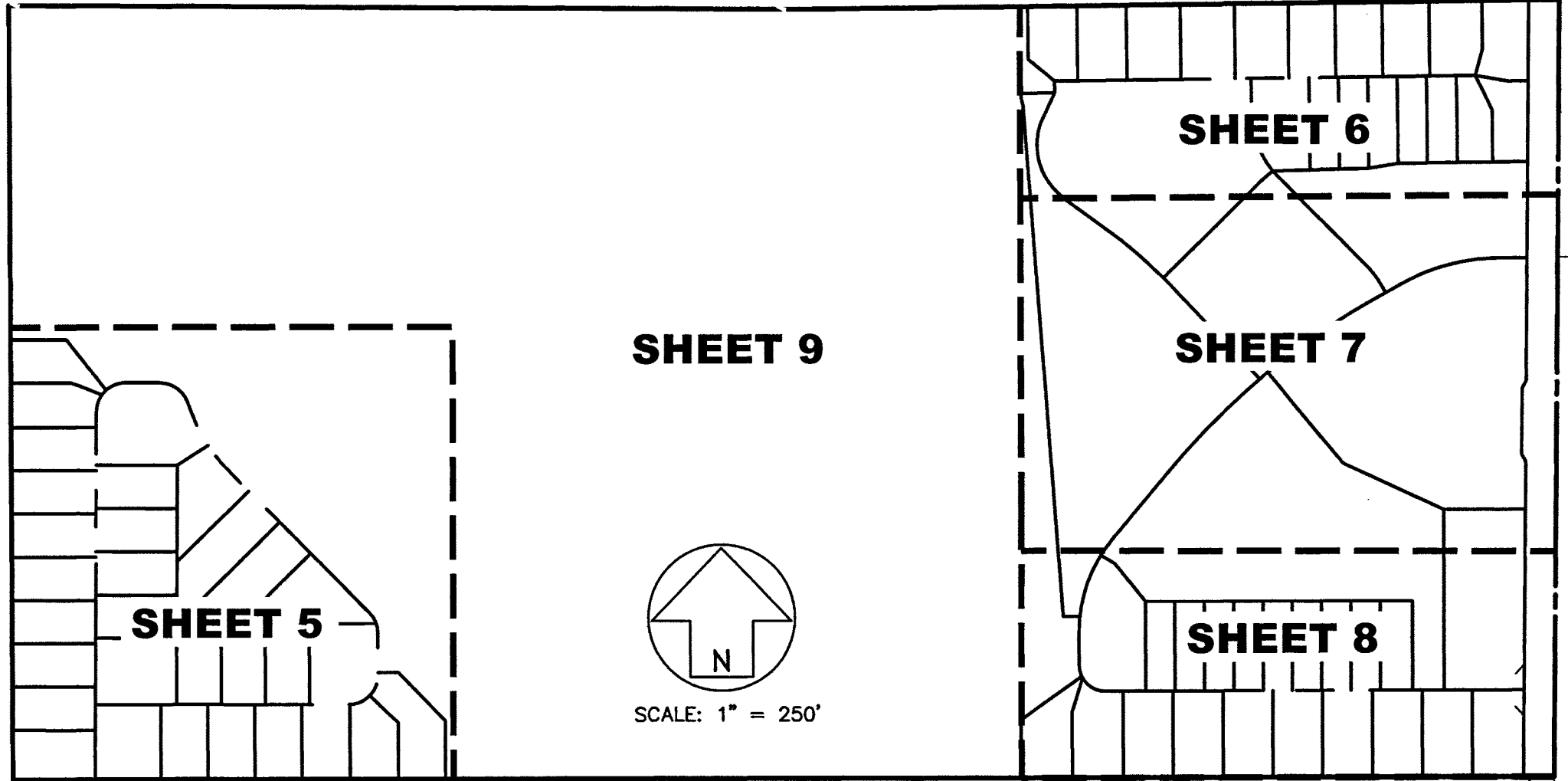


EXISTING EASEMENT NOTES

- 1 EASEMENT FOR WATER WELL AND RELATED PURPOSES PER DOCUMENT RECORDED APRIL 6, 2005 AS INSTRUMENT NO. 2005-31228 OF OFFICIAL RECORDS.
- 2 EASEMENT FOR AVIGATION PURPOSES RECORDED SEPTEMBER 29, 2015 AS INSTRUMENT NO. 2015-0051959 OF OFFICIAL RECORDS. BLANKET OVER ENTIRE TRACT.
- 3 42' EASEMENT FOR PUBLIC ROAD PURPOSES IN FAVOR OF THE COUNTY OF SANTA BARBARA, RECORDED APRIL 26, 1962 AS INSTRUMENT 17041 IN BOOK 1922, PAGE 388 OF OFFICIAL RECORDS.

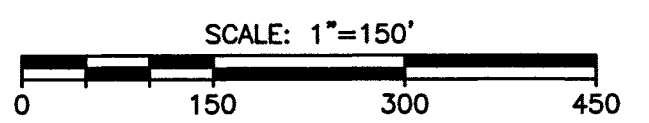
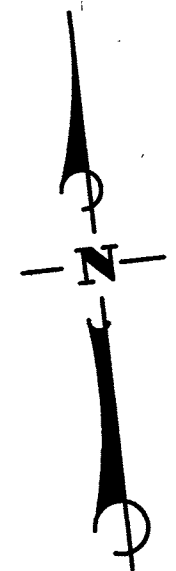
PROPOSED EASEMENT NOTES

- 1 EASEMENT FOR INGRESS, EGRESS, DRAINAGE BASIN, AND RELATED PURPOSES DEDICATED TO THE SANTA BARBARA COUNTY FLOOD CONTROL AND WATER CONSERVATION DISTRICT PER THIS MAP.
- 2 EASEMENT FOR PUBLIC MULTI-USE TRAIL AND RELATED PURPOSES DEDICATED TO COUNTY OF SANTA BARBARA PER THIS MAP.
- 3 EASEMENT FOR PUBLIC UTILITIES PER THIS MAP AND FOR PUBLIC SANITARY SEWER PURPOSES DEDICATED TO LAGUNA COUNTY SANITATION DISTRICT PER THIS MAP.
- 4 EASEMENT FOR PUBLIC ROAD AND PUBLIC UTILITIES DEDICATED TO THE COUNTY OF SANTA BARBARA PER THIS MAP.
- 5 EASEMENT FOR PUBLIC MULTI-USE TRAIL AND PUBLIC UTILITIES DEDICATED TO THE COUNTY OF SANTA BARBARA PER THIS MAP.
- 6 EASEMENT FOR INGRESS, EGRESS, DRAINAGE BASINS, STORM DRAIN PIPES, AND RELATED PURPOSES FOR THE BENEFIT OF LOTS 1 THROUGH 75, INCLUSIVE PER THIS MAP.

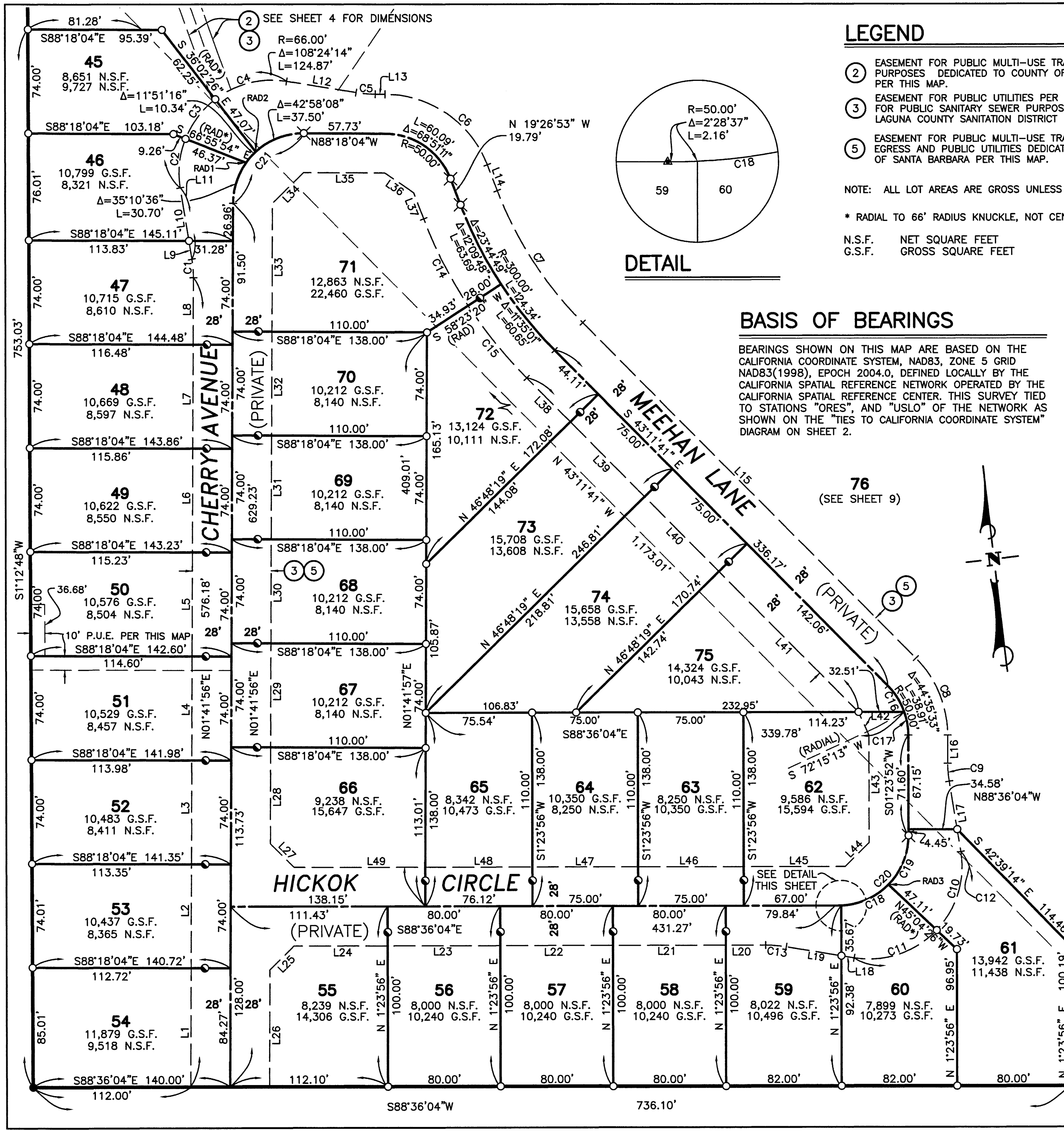


BASIS OF BEARINGS

BEARINGS SHOWN ON THIS MAP ARE BASED ON THE CALIFORNIA COORDINATE SYSTEM, NAD83, ZONE 5 GRID NAD83(1998), EPOCH 2004.0, DEFINED LOCALLY BY THE CALIFORNIA SPATIAL REFERENCE NETWORK OPERATED BY THE CALIFORNIA SPATIAL REFERENCE CENTER. THIS SURVEY TIED TO STATIONS "ORES", AND "USLO" OF THE NETWORK AS SHOWN ON THE "TIES TO CALIFORNIA COORDINATE SYSTEM" DIAGRAM ON SHEET 2.



FINAL MAP NO. 14,739
COUNTY OF SANTA BARBARA
SHEET 4 OF 9 SHEETS
P.N. 2064017239
February 2016



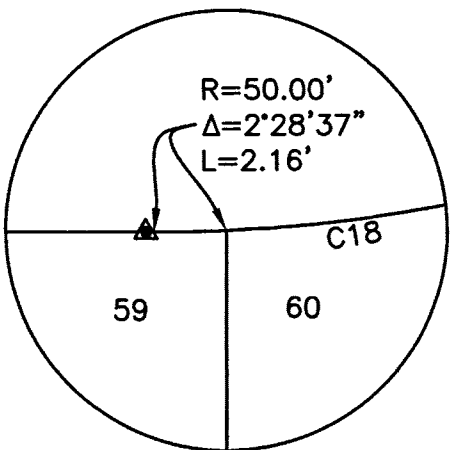
LEGEND

- ② EASEMENT FOR PUBLIC MULTI-USE TRAIL AND RELATED PURPOSES DEDICATED TO COUNTY OF SANTA BARBARA PER THIS MAP.
- ③ EASEMENT FOR PUBLIC UTILITIES PER THIS MAP AND FOR PUBLIC SANITARY SEWER PURPOSES DEDICATED TO LAGUNA COUNTY SANITATION DISTRICT PER THIS MAP.
- ⑤ EASEMENT FOR PUBLIC MULTI-USE TRAIL INGRESS AND EGRESS AND PUBLIC UTILITIES DEDICATED TO THE COUNTY OF SANTA BARBARA PER THIS MAP.
- FOUND MONUMENT AS NOTED ON SHEET 3
- SET 1/2" IRON PIPE WITH TAG STAMPED "PLS 9116"
- ⊙ SET LEAD & TACK WITH TAG STAMPED "PLS 9116" SET ON LOT LINE, ON TOP OF CURB, 18.25' FROM STREET CENTERLINE WHERE CURB IS CONCENTRIC WITH CENTERLINE
- ⊗ SET SPIKE AND WASHER STAMPED "PLS 9116"
- ▲ SET 2" IRON PIPE WITH 2" ALUMINUM CAP STAMPED "PLS 9116", IN MONUMENT WELL

NOTE: ALL LOT AREAS ARE GROSS UNLESS OTHERWISE NOTED

* RADIAL TO 66' RADIUS KNUCKLE, NOT CENTERLINE

N.S.F. NET SQUARE FEET
G.S.F. GROSS SQUARE FEET



DETAIL

BASIS OF BEARINGS

BEARINGS SHOWN ON THIS MAP ARE BASED ON THE CALIFORNIA COORDINATE SYSTEM, NAD83, ZONE 5 GRID NAD83(1998), EPOCH 2004.0, DEFINED LOCALLY BY THE CALIFORNIA SPATIAL REFERENCE NETWORK OPERATED BY THE CALIFORNIA SPATIAL REFERENCE CENTER. THIS SURVEY TIED TO STATIONS "ORES", AND "USLO" OF THE NETWORK AS SHOWN ON THE "TIES TO CALIFORNIA COORDINATE SYSTEM" DIAGRAM ON SHEET 2.

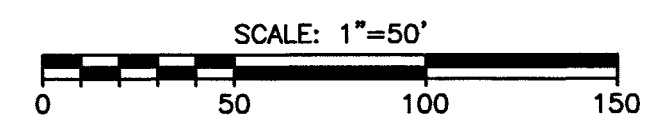
RADIAL LINE TABLE

LINE	DIRECTION
RAD1	S53°07'28"E
RAD2	S41°16'11"E
RAD3	N44°09'27"W

CURVE TABLE			
CURVE	DELTA	RADIUS	LENGTH
C1	9°30'11"	80.00'	13.27'
C2	30°52'21"	66.00'	35.56'
C3	30°53'27"	66.00'	35.58'
C4	46°38'25"	66.00'	53.73'
C5	8°43'10"	90.00'	13.70'
C6	68°51'12"	78.00'	93.73'
C7	23°44'49"	272.00'	112.73'
C8	44°35'35"	78.00'	60.71'
C9	9°12'11"	90.00'	14.46'
C10	52°43'53"	66.00'	60.74'
C11	55°49'05"	66.00'	64.30'
C12	108°32'58"	66.00'	125.04'
C13	9°20'43"	90.00'	14.68'
C14	12°09'48"	328.00'	69.63'
C15	11°35'01"	328.00'	66.31'
C16	25°26'54"	50.00'	22.20'
C17	19°08'39"	50.00'	16.71'
C18	43°04'46"	50.00'	37.59'
C19	44°26'41"	50.00'	38.79'
C20	90°00'04"	50.00'	78.54'
C21	90°00'00"	50.00'	78.54'

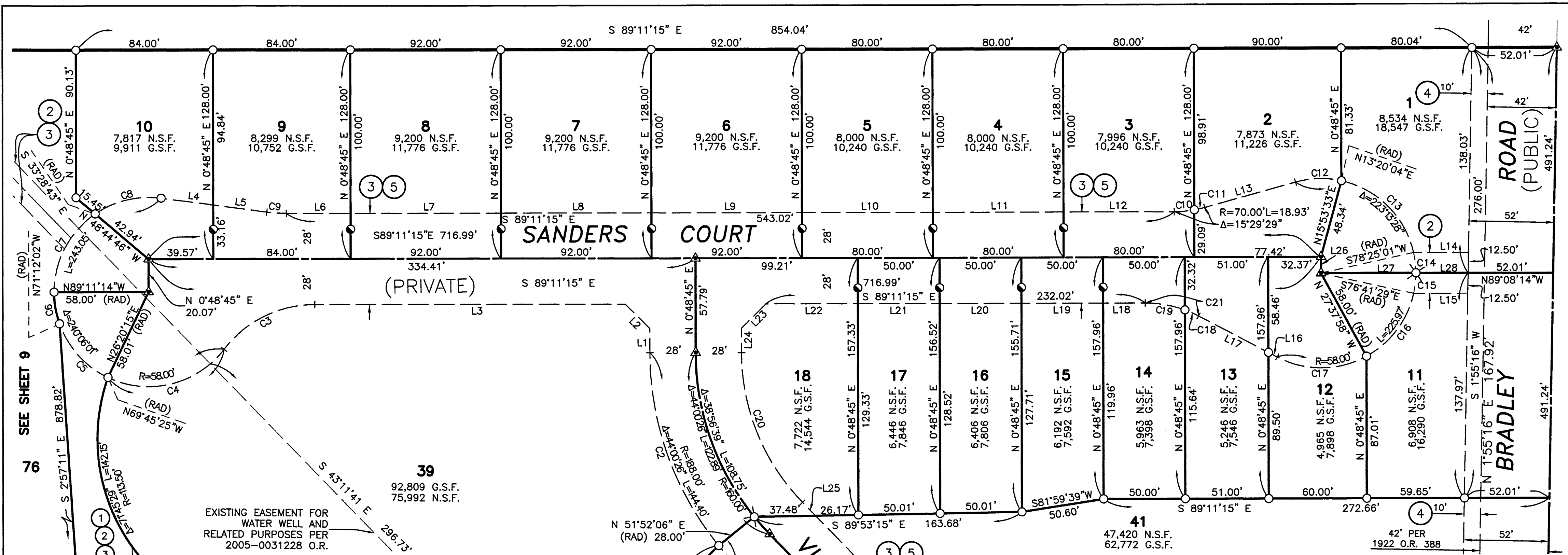
LINE TABLE		
LINE	DIRECTION	LENGTH
L1	N 01°41'56" E	84.41'
L2	N 01°41'56" E	74.00'
L3	N 01°41'56" E	74.00'
L4	N 01°41'56" E	74.00'
L5	N 01°41'56" E	74.00'
L6	N 01°41'56" E	74.00'
L7	S 01°41'56" W	74.00'
L8	N 01°41'56" E	47.77'
L9	N 07°48'15" W	13.21'
L10	N 07°48'15" W	38.21'
L11	N 07°48'15" W	51.41'
L12	S 79°24'01" E	50.00'
L13	S 88°18'04" E	6.97'
L14	S 19°26'53" E	19.79'
L15	S 43°11'41" E	336.17'
L16	S 01°23'52" W	19.33'
L17	S 07°48'19" E	33.87'
L18	N 79°15'21" W	9.25'
L19	N 79°15'21" W	39.59'
L20	N 88°36'04" W	28.32'
L21	S 88°36'04" E	80.00'
L22	N 88°36'04" W	80.00'

LINE TABLE		
LINE	DIRECTION	LENGTH
L23	S 88°36'04" E	80.00'
L24	N 88°36'04" W	66.57'
L25	N 46°32'56" E	24.10'
L26	S 01°41'56" W	83.00'
L27	N 43°27'04" W	23.98'
L28	S 01°41'56" W	68.58'
L29	N 01°41'56" E	74.00'
L30	S 01°41'56" W	74.00'
L31	N 01°41'56" E	74.00'
L32	S 01°41'56" W	74.00'
L33	N 01°41'56" E	91.50'
L34	S 46°44'04" W	31.13'
L35	S 88°18'04" E	57.70'
L36	S 53°52'28" E	24.88'
L37	S 19°26'53" E	19.79'
L38	S 43°11'41" E	44.11'
L39	S 43°11'41" E	75.00'
L40	S 43°11'41" E	75.00'
L41	S 43°11'41" E	140.73'
L42	S 22°31'11" E	17.94'
L43	S 01°23'52" W	76.60'
L44	N 46°23'54" E	24.04'
L45	N 88°36'04" W	72.00'
L46	S 88°36'04" E	75.00'
L47	N 88°36'04" W	75.00'
L48	S 88°36'04" E	76.00'
L49	S 88°36'04" E	93.00'



EXISTING EASEMENT FOR WATER WELL AND RELATED PURPOSES PER 2005-0031228 SEE SHEET 4 FOR DIMENSIONS

FINAL MAP NO. 14,739
COUNTY OF SANTA BARBARA
SHEET 5 OF 9 SHEETS



BASIS OF BEARINGS

BEARINGS SHOWN ON THIS MAP ARE ON THE CALIFORNIA COORDINATE SYSTEM, NAD83, ZONE 5 GRID NAD83(1998), EPOCH 2004.0, DEFINED LOCALLY BY THE CALIFORNIA SPATIAL REFERENCE NETWORK OPERATED BY THE CALIFORNIA SPATIAL REFERENCE CENTER. THIS SURVEY TIED TO STATIONS "ORES", AND "USLO" OF THE NETWORK AS SHOWN ON THE "TIES TO CALIFORNIA COORDINATE SYSTEM" DIAGRAM ON SHEET 2.

LINE TABLE

LINE	DIRECTION	LENGTH
L1	S 00°48'45" W	14.81'
L2	S 44°11'28" E	21.18'
L3	S 89°11'15" E	189.89'
L4	N 81°34'52" W	32.17'
L5	N 81°34'52" W	33.02'
L6	N 89°11'15" W	39.35'
L7	N 89°11'15" W	92.00'
L8	N 89°11'15" W	92.00'
L9	S 89°11'15" E	92.00'
L10	N 89°11'15" W	80.00'
L11	S 89°11'15" E	80.00'
L12	N 89°11'15" W	67.67'
L13	S 75°19'16" W	57.66'
L14	N 89°11'15" W	33.54'
L15	S 89°11'15" E	33.08'
L16	S 61°27'16" E	6.08'

LINE TABLE

LINE	DIRECTION	LENGTH
L17	S 61°27'16" E	48.17'
L18	S 89°11'15" E	25.79'
L19	N 89°11'15" W	50.00'
L20	S 89°11'15" E	50.00'
L21	N 89°11'15" W	50.00'
L22	S 89°11'15" E	56.24'
L23	N 45°48'32" E	21.17'
L24	N 00°48'45" E	14.82'
L25	N 43°11'40" W	11.48'
L26	N 00°48'45" E	9.95'
L27	N 89°08'18" W	58.00'
L28	S 89°11'15" E	31.94'

CURVE TABLE

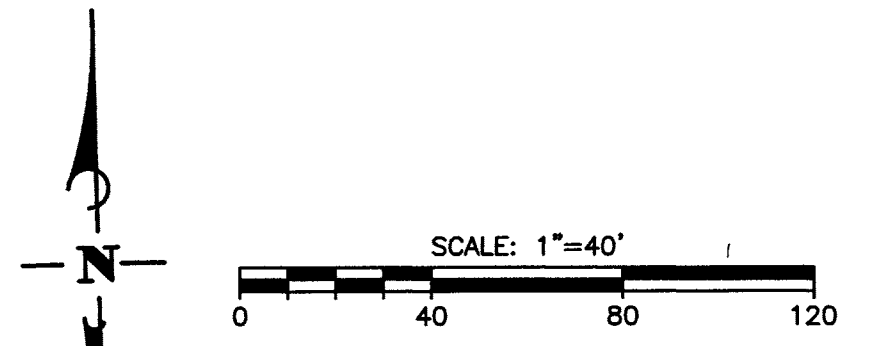
CURVE	DELTA	RADIUS	LENGTH
C8	41°53'51"	58.00'	42.41'
C9	7°36'23"	90.00'	11.95'
C10	10°08'39"	70.00'	12.39'
C11	5°20'50"	70.00'	6.53'
C12	28°00'48"	58.00'	28.36'
C13	65°04'57"	58.00'	65.88'
C14	12°26'45"	58.00'	12.60'
C15	12°26'45"	58.00'	12.60'
C16	49°03'31"	58.00'	49.66'
C17	56°10'42"	58.00'	56.87'
C18	7°29'48"	70.00'	9.16'
C19	20°14'12"	70.00'	24.72'
C20	44°00'26"	132.00'	101.39'
C21	27°43'59"	70.00'	33.88'

CURVE TABLE

CURVE	DELTA	RADIUS	LENGTH
C1	5°03'47"	188.00'	16.61'
C2	38°56'39"	188.00'	127.78'
C3	52°29'38"	70.00'	64.13'
C4	78°01'08"	58.00'	78.98'
C5	44°51'47"	58.00'	45.41'
C6	19°36'44"	58.00'	19.85'
C7	55°42'30"	58.00'	56.39'

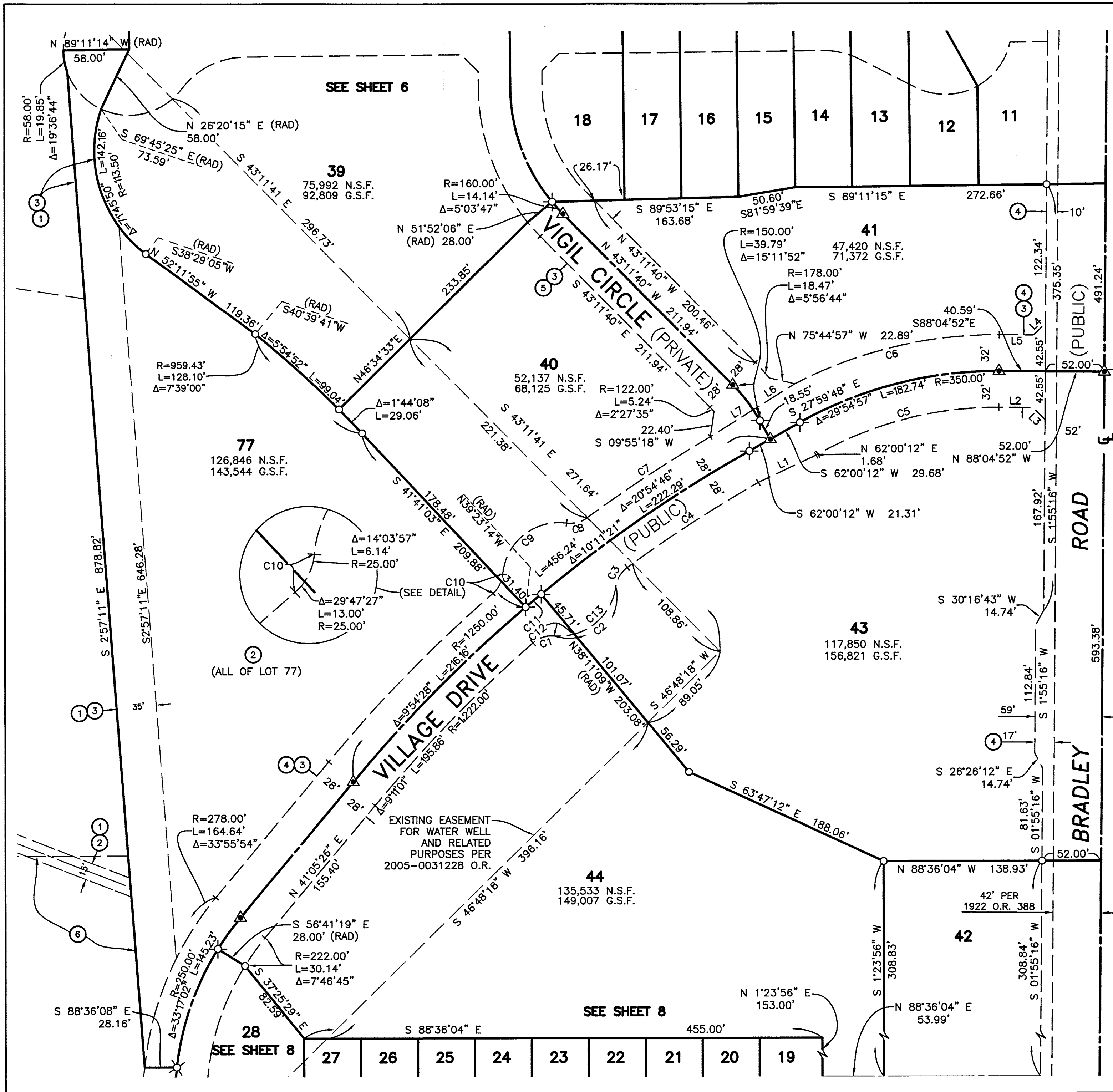
LEGEND

- ① EASEMENT FOR DRAINAGE, BASIN, STORM DRAIN PIPES, AND RELATED PURPOSES DEDICATED TO THE SANTA BARBARA COUNTY FLOOD CONTROL AND WATER CONSERVATION DISTRICT PER THIS MAP
 - ② EASEMENT FOR PUBLIC MULTI-USE TRAIL AND RELATED PURPOSES DEDICATED TO COUNTY OF SANTA BARBARA PER THIS MAP.
 - ③ EASEMENT FOR PUBLIC UTILITIES PER THIS MAP AND FOR PUBLIC SANITARY SEWER PURPOSES DEDICATED TO LAGUNA COUNTY SANITATION DISTRICT PER THIS MAP.
 - ④ EASEMENT FOR PUBLIC ROAD AND PUBLIC UTILITIES DEDICATED TO THE COUNTY OF SANTA BARBARA PER THIS MAP.
 - ⑤ EASEMENT FOR PUBLIC MULTI-USE TRAIL INGRESS AND EGRESS AND PUBLIC UTILITIES DEDICATED TO THE COUNTY OF SANTA BARBARA PER THIS MAP.
- N.S.F. NET SQUARE FEET
G.S.F. GROSS SQUARE FEET
- FOUND MONUMENT AS NOTED ON SHEET 3
 - SET 1/2" IRON PIPE WITH TAG STAMPED "PLS 9116"
 - SET LEAD & TACK WITH TAG STAMPED "PLS 9116" SET ON LOT LINE, ON TOP OF CURB, 18.25' FROM STREET CENTERLINE WHERE CURB IS CONCENTRIC WITH CENTERLINE
 - ⊙ SET 2" IRON PIPE WITH 2" ALUMINUM CAP STAMPED "PLS 9116"
 - ⊗ SET SPIKE AND WASHER STAMPED "PLS 9116"
 - ▲ SET 2" IRON PIPE WITH 2" ALUMINUM CAP STAMPED "PLS 9116", IN MONUMENT WELL



FINAL MAP NO. 14,739

COUNTY OF SANTA BARBARA
SHEET 6 OF 9 SHEETS
P.N. 2064017239
February 2016



LINE TABLE		
LINE	DIRECTION	LENGTH
L1	N 66°04'13" E	56.14'
L2	S 88°04'44" E	30.03'
L3	S 43°04'44" E	14.92'
L4	N 46°55'16" E	14.92'
L5	S 88°04'44" E	30.03'
L6	N 59°23'09" E	43.10'
L7	N 59°23'09" E	44.39'

CURVE TABLE			
CURVE	DELTA	RADIUS	LENGTH
C1	46°17'31"	25.00'	20.20'
C2	87°36'45"	50.00'	76.46'
C3	46°17'31"	25.00'	20.20'
C4	6°26'38"	1222.00'	137.44'
C5	29°55'04"	318.00'	166.05'
C6	27°58'29"	382.00'	186.51'
C7	5°48'33"	1278.00'	129.58'
C8	43°51'24"	25.00'	19.14'
C9	92°28'43"	50.00'	80.70'
C10	43°51'24"	25.00'	19.14'
C11	0°48'56"	1250.00'	17.79'
C12	20°22'48"	50.00'	17.78'
C13	67°13'58"	50.00'	58.67'

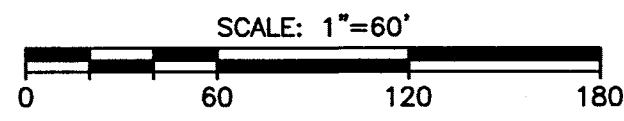
LEGEND

- ① EASEMENT FOR INGRESS, EGRESS, DRAINAGE BASIN, AND RELATED PURPOSES DEDICATED TO THE SANTA BARBARA COUNTY FLOOD CONTROL AND WATER CONSERVATION DISTRICT PER THIS MAP.
- ② EASEMENT FOR PUBLIC MULTI-USE TRAIL AND RELATED PURPOSES DEDICATED TO COUNTY OF SANTA BARBARA PER THIS MAP.
- ③ EASEMENT FOR PUBLIC UTILITIES PER THIS MAP AND FOR PUBLIC SANITARY SEWER PURPOSES DEDICATED TO LAGUNA COUNTY SANITATION DISTRICT PER THIS MAP.
- ④ EASEMENT FOR PUBLIC ROAD AND PUBLIC UTILITIES DEDICATED TO THE COUNTY OF SANTA BARBARA PER THIS MAP.
- ⑤ EASEMENT FOR PUBLIC MULTI-USE TRAIL INGRESS AND EGRESS AND PUBLIC UTILITIES DEDICATED TO THE COUNTY OF SANTA BARBARA PER THIS MAP.
- ⑥ EASEMENT FOR INGRESS, EGRESS, DRAINAGE BASINS, STORM DRAIN PIPES, AND RELATED PURPOSES FOR THE BENEFIT OF LOTS 1 THROUGH 75, INCLUSIVE PER THIS MAP.
- FOUND MONUMENT AS NOTED
- SET 1/2" IRON PIPE WITH TAG STAMPED "PLS 9116"
- SET LEAD & TACK WITH TAG STAMPED "PLS 9116" SET ON LOT LINE, ON TOP OF CURB, 18.25' FROM STREET CENTERLINE WHERE CURB IS CONCENTRIC WITH CENTERLINE
- ⊗ SET SPIKE AND WASHER STAMPED "PLS 9116"
- ▲ SET 2" IRON PIPE WITH 2" ALUMINUM CAP STAMPED "PLS 9116", IN MONUMENT WELL

N.S.F. NET SQUARE FEET
G.S.F. GROSS SQUARE FEET

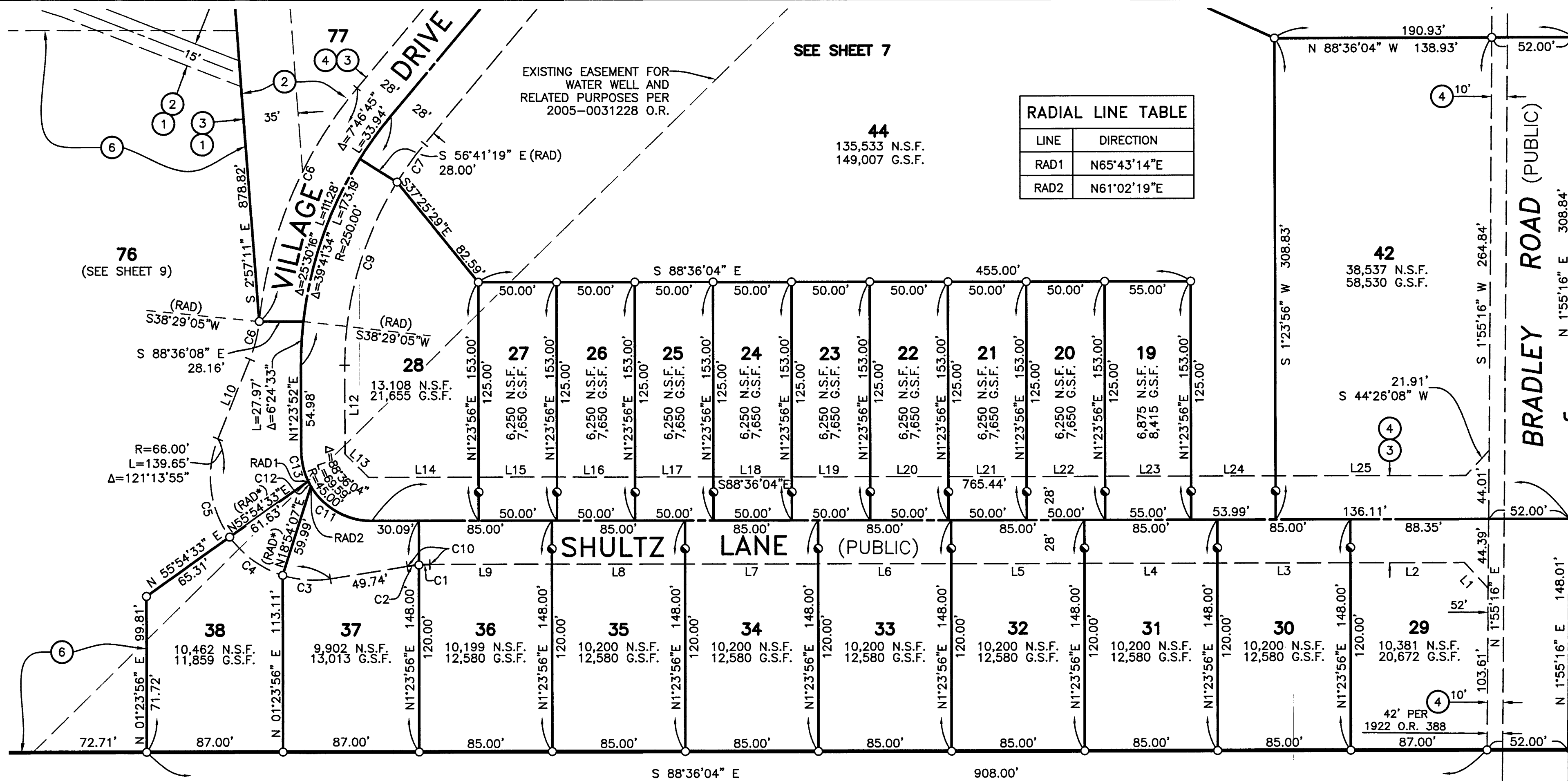
BASIS OF BEARINGS

BEARINGS SHOWN ON THIS MAP ARE BASED ON THE CALIFORNIA COORDINATE SYSTEM, NAD83, ZONE 5 GRID NAD83(1998), EPOCH 2004.0, DEFINED LOCALLY BY THE CALIFORNIA SPATIAL REFERENCE NETWORK OPERATED BY THE CALIFORNIA SPATIAL REFERENCE CENTER. THIS SURVEY TIED TO STATIONS "ORES", AND "USLO" OF THE NETWORK AS SHOWN ON THE "TIES TO CALIFORNIA COORDINATE SYSTEM" DIAGRAM ON SHEET 2.



FINAL MAP NO. 14,739

COUNTY OF SANTA BARBARA
SHEET 7 OF 9 SHEETS
P.N. 2064017239
February 2016



SEE SHEET 7

RADIAL LINE TABLE

LINE	DIRECTION
RAD1	N65°43'14"E
RAD2	N61°02'19"E

44
135,533 N.S.F.
149,007 G.S.F.

76
(SEE SHEET 9)

42
38,537 N.S.F.
58,530 G.S.F.

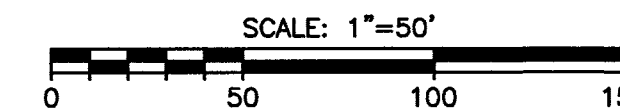
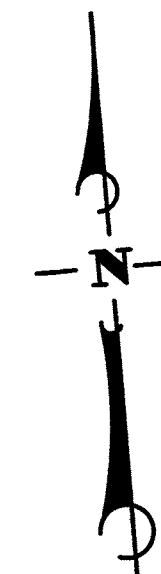
LEGEND

- ① EASEMENT FOR INGRESS, EGRESS, DRAINAGE BASIN, AND RELATED PURPOSES DEDICATED TO THE SANTA BARBARA COUNTY FLOOD CONTROL AND WATER CONSERVATION DISTRICT PER THIS MAP.
- ② EASEMENT FOR PUBLIC MULTI-USE TRAIL AND RELATED PURPOSES DEDICATED TO COUNTY OF SANTA BARBARA PER THIS MAP.
- ③ EASEMENT FOR PUBLIC UTILITIES PER THIS MAP AND FOR PUBLIC SANITARY SEWER PURPOSES DEDICATED TO LAGUNA COUNTY SANITATION DISTRICT PER THIS MAP.
- ④ EASEMENT FOR PUBLIC ROAD AND PUBLIC UTILITY PURPOSES DEDICATED TO THE COUNTY OF SANTA BARBARA PER THIS MAP.
- ⑥ EASEMENT FOR INGRESS, EGRESS, DRAINAGE BASINS, STORM DRAIN PIPES, AND RELATED PURPOSES FOR THE BENEFIT OF LOTS 1 THROUGH 75, INCLUSIVE PER THIS MAP.

- FOUND MONUMENT AS NOTED ON SHEET 3
- SET 1/2" IRON PIPE WITH TAG STAMPED "PLS 9116"
- SET LEAD & TACK WITH TAG STAMPED "PLS 9116" SET ON LOT LINE, ON TOP OF CURB, 18.25' FROM STREET CENTERLINE WHERE CURB IS CONCENTRIC WITH CENTERLINE
- ⊗ SET SPIKE AND WASHER STAMPED "PLS 9116"
- ▲ SET 2" IRON PIPE WITH 2" ALUMINUM CAP STAMPED "PLS 9116", IN MONUMENT WELL

BASIS OF BEARINGS

BEARINGS SHOWN ON THIS MAP ARE BASED ON THE CALIFORNIA COORDINATE SYSTEM, NAD83, ZONE 5 GRID NAD83(1998), EPOCH 2004.0, DEFINED LOCALLY BY THE CALIFORNIA SPATIAL REFERENCE NETWORK OPERATED BY THE CALIFORNIA SPATIAL REFERENCE CENTER. THIS SURVEY TIED TO STATIONS "ORES", AND "USLO" OF THE NETWORK AS SHOWN ON THE "TIES TO CALIFORNIA COORDINATE SYSTEM" DIAGRAM ON SHEET 2.



CURVE TABLE			
CURVE	DELTA	RADIUS	LENGTH
C1	4°26'19"	90.00'	6.97'
C2	4°45'52"	90.00'	7.48'
C3	26°45'45"	66.00'	30.83'
C4	36°57'03"	66.00'	42.56'
C5	57°31'07"	66.00'	66.26'
C6	33°55'54"	278.00'	164.64'
C7	16°16'08"	88.00'	24.99'
C8	7°46'45"	222.00'	30.14'
C9	31°54'49"	222.00'	123.65'
C10	9°12'11"	90.00'	14.46'
C11	25°40'38"	45.00'	20.17'
C12	4°40'54"	45.00'	3.68'
C13	59°38'23"	45.00'	46.84'

LINE TABLE		
LINE	DIRECTION	LENGTH
L1	S 41°09'32" E	22.25'
L2	S 88°36'04" E	72.89'
L3	S 88°36'04" E	85.00'
L4	S 88°36'04" E	85.00'
L5	S 88°36'04" E	85.00'
L6	S 88°36'04" E	85.00'
L7	S 88°36'04" E	85.00'
L8	S 88°36'04" E	85.00'
L9	S 88°36'04" E	78.03'
L10	S 82°11'45 W	49.74'
L11	S 23°25'40" W	54.93'
L12	N 01°23'49" E	56.98'
L13	N 43°36'07" W	21.21'

LINE TABLE		
LINE	DIRECTION	LENGTH
L14	N 88°36'04" W	70.33'
L15	S 88°36'04" E	50.00'
L16	N 88°36'04" W	50.00'
L17	S 88°36'04" E	50.00'
L18	N 88°36'04" W	50.00'
L19	S 88°36'04" E	50.00'
L20	N 88°36'04" W	50.00'
L21	S 88°36'04" E	50.00'
L22	N 88°36'04" W	50.00'
L23	S 88°36'04" E	55.00'
L24	S 88°36'04" E	53.99'
L25	N 88°36'04" W	121.56'
L25	S 44°26'08" W	21.91'

* RADIAL TO 66' RADIUS KNUCKLE, NOT CENTERLINE

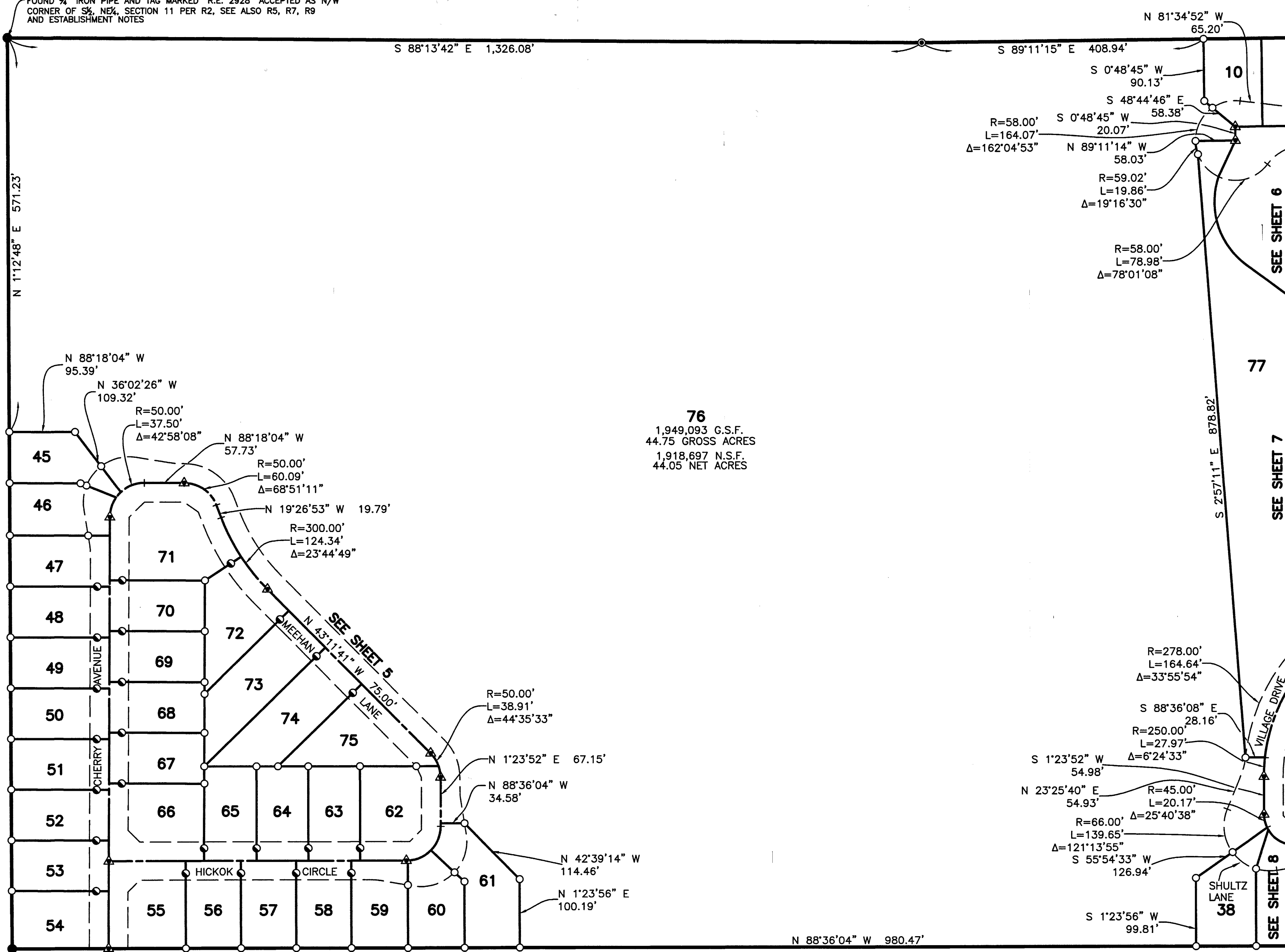
N.S.F. NET SQUARE FEET
G.S.F. GROSS SQUARE FEET

FINAL MAP NO. 14,739

COUNTY OF SANTA BARBARA
SHEET 8 OF 9 SHEETS

P.N. 2064017239
February 2016

FOUND 3/4" IRON PIPE AND TAG MARKED "R.E. 2928" ACCEPTED AS N/W CORNER OF S 1/2, NE 1/4, SECTION 11 PER R2, SEE ALSO R5, R7, R9 AND ESTABLISHMENT NOTES



76
 1,949,093 G.S.F.
 44.75 GROSS ACRES
 1,918,697 N.S.F.
 44.05 NET ACRES

LEGEND

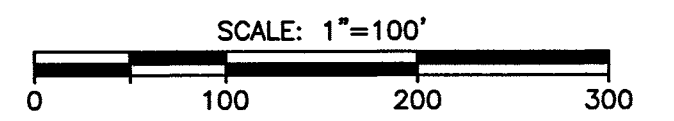
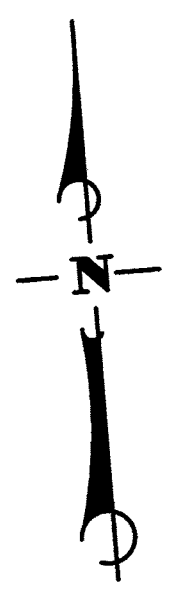
- FOUND MONUMENT AS NOTED ON SHEET 3
- SET 1/2" IRON PIPE WITH TAG STAMPED "PLS 9116"
- ◉ SET LEAD & TACK WITH TAG STAMPED "PLS 9116" ON TOP OF CURB, 18.25' FROM STREET CENTERLINE
- ⊙ SET 2" IRON PIPE WITH 2" ALUMINUM CAP STAMPED "PLS 9116"
- ⊗ SET SPIKE AND WASHER STAMPED "PLS 9116"
- ▲ SET 2" IRON PIPE WITH 2" ALUMINUM CAP STAMPED "PLS 9116", IN MONUMENT WELL

N.S.F. NET SQUARE FEET
 G.S.F. GROSS SQUARE FEET

BASIS OF BEARINGS

BEARINGS SHOWN ON THIS MAP ARE BASED ON THE CALIFORNIA COORDINATE SYSTEM, NAD83, ZONE 5 GRID NAD83(1998), EPOCH 2004.0, DEFINED LOCALLY BY THE CALIFORNIA SPATIAL REFERENCE NETWORK OPERATED BY THE CALIFORNIA SPATIAL REFERENCE CENTER. THIS SURVEY TIED TO STATIONS "ORES", AND "USLO" OF THE NETWORK AS SHOWN ON THE "TIES TO CALIFORNIA COORDINATE SYSTEM" DIAGRAM ON SHEET 2.

FOUND 2" BRASS CAP ACCEPTED AS CENTER SECTION 11 PER R2. SEE ALSO R3, R5, R6, R8 & R9



FINAL MAP NO. 14,739

COUNTY OF SANTA BARBARA
 SHEET 9 OF 9 SHEETS P.N. 2064017239
 February 2016