

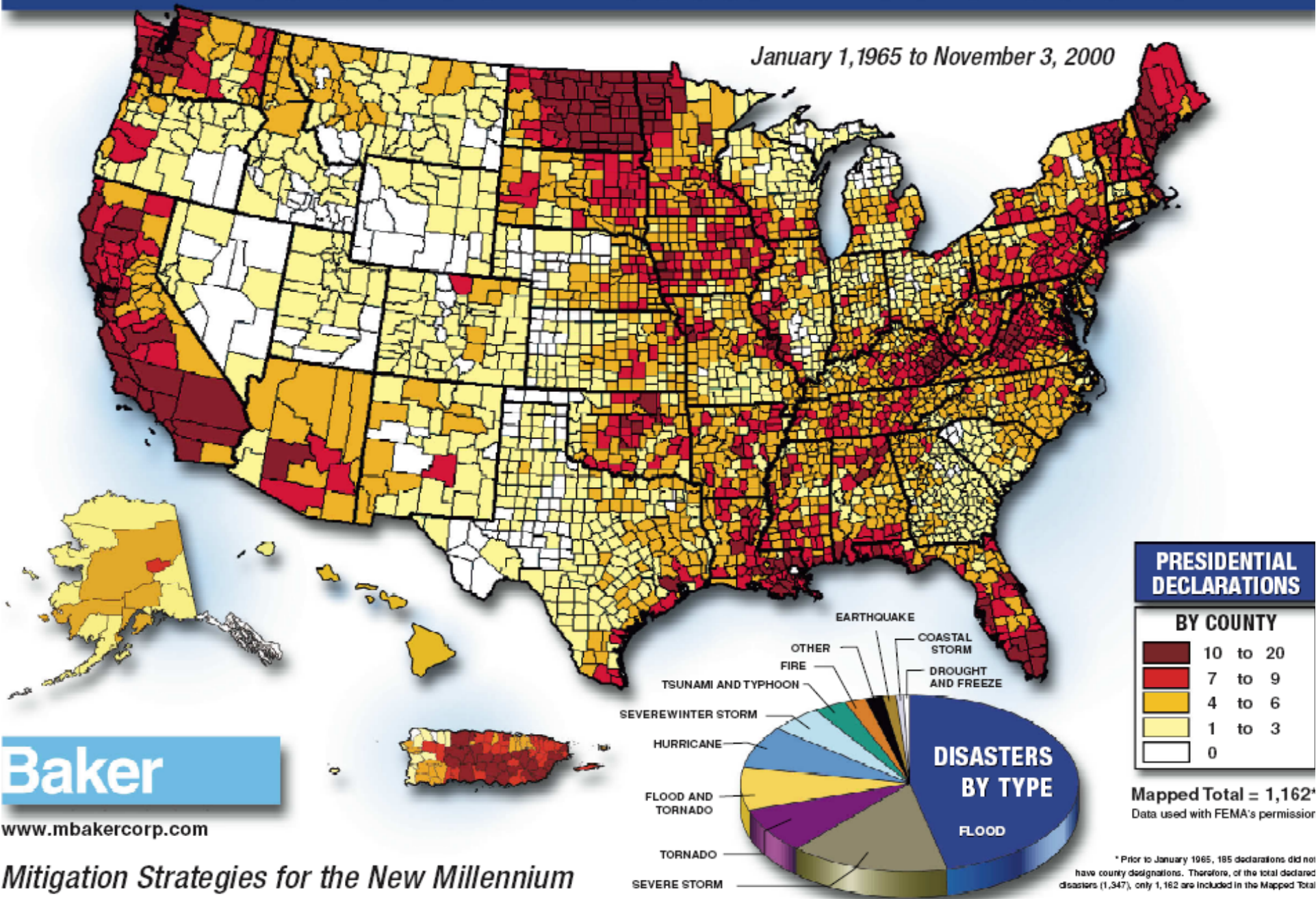
Santa Barbara County Office of Emergency Services

Recommendations to the Board Regarding the Operational Area Emergency Operations Center

January 15, 2008

Presidential Disaster Declarations

January 1, 1965 to November 3, 2000



Baker

www.mbakercorp.com

Mitigation Strategies for the New Millennium

PRESIDENTIAL DECLARATIONS

BY COUNTY

Dark Red	10 to 20
Red	7 to 9
Orange	4 to 6
Yellow	1 to 3
White	0

Mapped Total = 1,162*
Data used with FEMA's permission

*Prior to January 1965, 185 declarations did not have county designations. Therefore, of the total declared disasters (1,347), only 1,162 are included in the Mapped Total

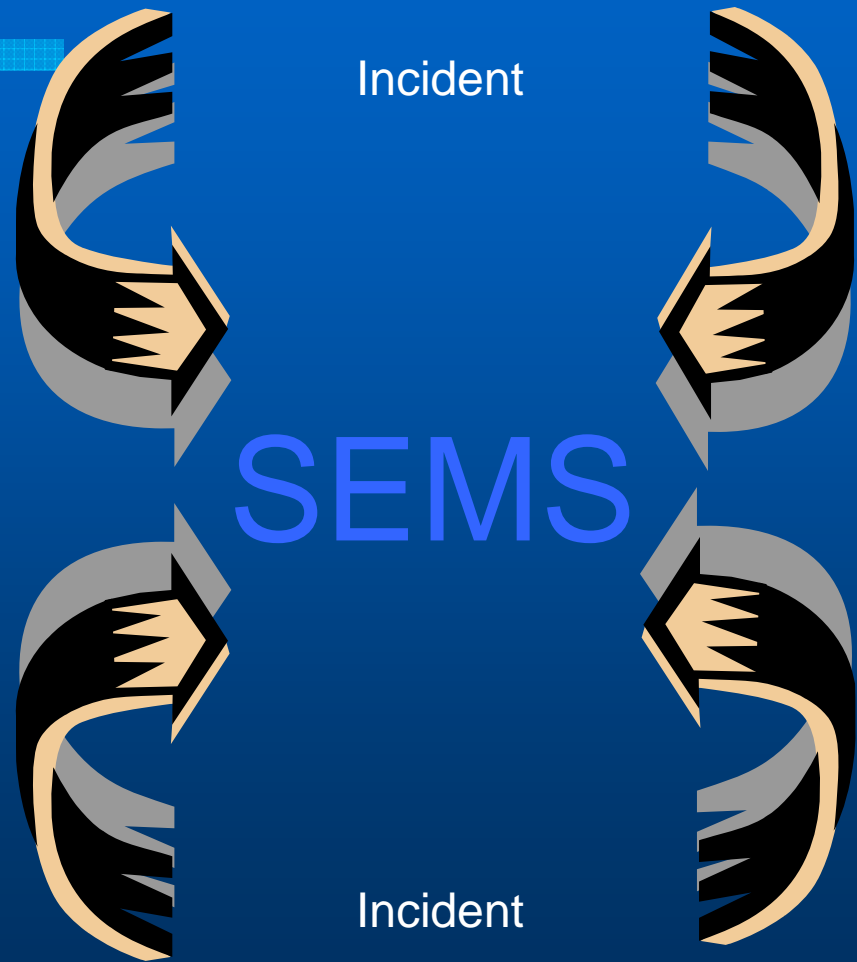
What is an EOC?

“The EOC serves as a centralized management center for emergency operations. Here, decisions are made by the EMG (Emergency Management Group) based upon information provided by the IC (Incident Commander) and other personnel.”

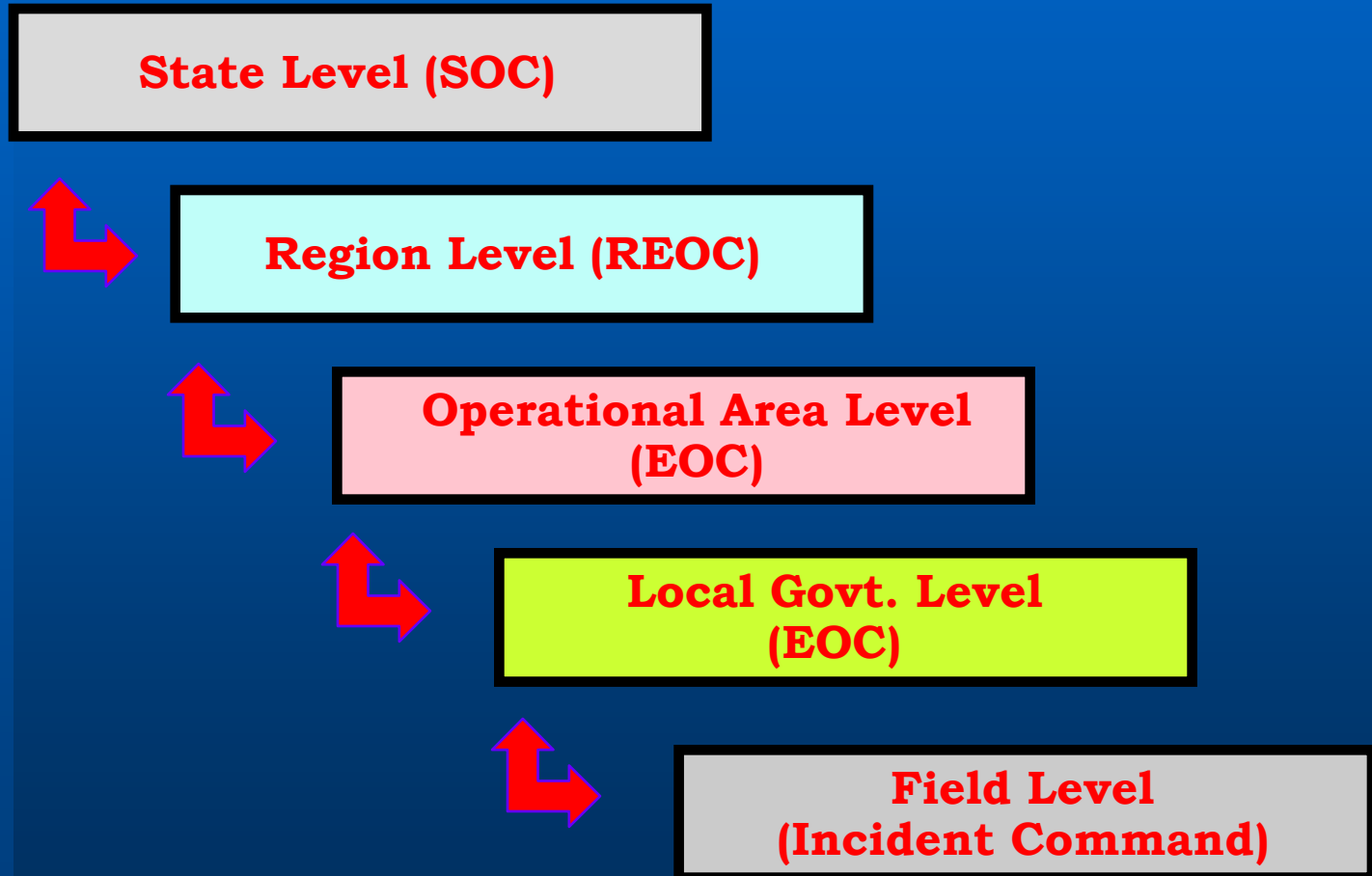
Federal Emergency Management Agency (FEMA)

The EOC Supports SEMS

Standardized
Emergency
Management
System



SEMS Handles “The Big Picture” Through The EOC



Priorities of An EOC

1. EOC Staff Proximity
 2. Communication Pipeline
 3. Expandable Site
 4. Utilities
 5. Security
1. Seismic Stability
 2. Vehicle Access
 3. Helicopter Access
 4. Fire/Smoke Risk
 5. Site Safety/Airport Risk

Comparison Scoring Table

Criteria (Maximum Points)	High Priorities				Medium Priorities			Low Priorities				
	EOC Staffing Proximity (100 Pts.)	Expandable Site (90 Pts.)	Communications Pipeline (100 Pts.)	Utilities (90 Pts.)	Security (80 Pts.)	Seismic Stability (60 Pts.)	Vehicle Access (60 Pts.)	Helicopter Access (50 Pts.)	Fire/Smoke Risk (50 Pts.)	Site Safety/Airport Risk (50 Pts.)	Other Considerations ^[1]	Total Score
Betteravia Campus	30	90	90	90	60	60	60	30	50	40	50	650
Santa Ynez Airport	50	50	30	30	70	50	30	50	40	20	- 80	340
Cathedral Oaks	100	90	100	90	80	40	60	40	40	50	30	720

[1]

Betteravia Considerations: Co-location; Infrastructure already in place; No or limited EIR or mitigations issues. 50 pts.

Santa Ynez Airport Considerations: Fill Dirt at location – unknown impacts/mitigation; Potential community development issues. – 80 pts.

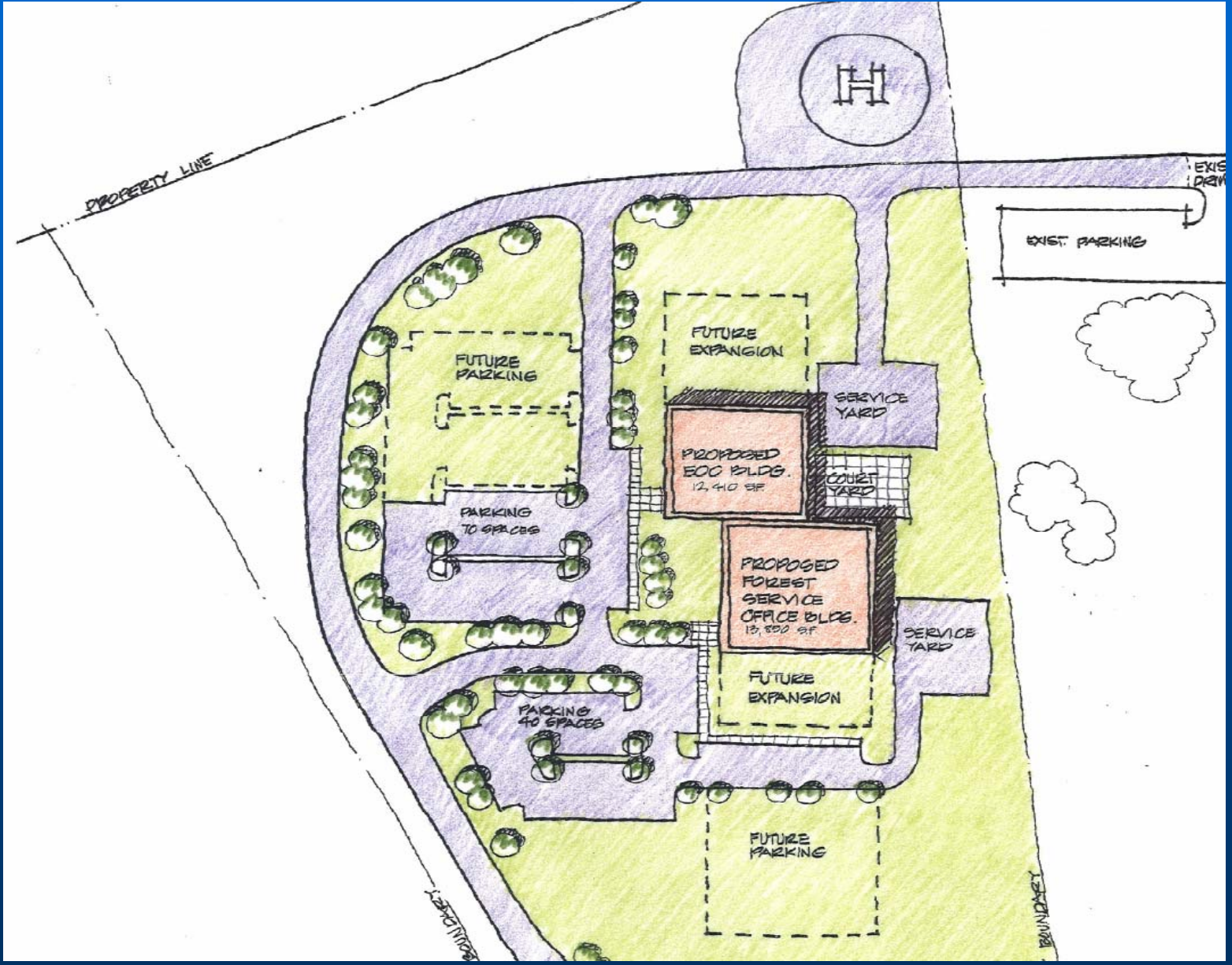
Cathedral Oaks Considerations: Considerable expansion & partnering interests; Potential community development issues. 30 Pts.

Recommendation #1

Area of
Development

Construct a County / Operational Area EOC in the Santa Barbara area in the area of Cathedral Oaks.





Recommendation #2

Develop two contingency plans:

- An alternate EOC at the Santa Maria Annex; and,
- A flexible EOC deployment strategy such as specialty tents.

Recommendation #3

Without delaying the project, continue to discuss with all potential partnering jurisdictions their serious interests in co-developing an EOC or an alternate EOC.