

Update to Seismic Safety and Safety
Element, Land Use Element, and
Conservation Element

Office of Long Range
Planning
Board of Supervisors
Hearing
August 10, 2010



OFFICE OF LONG RANGE PLANNING

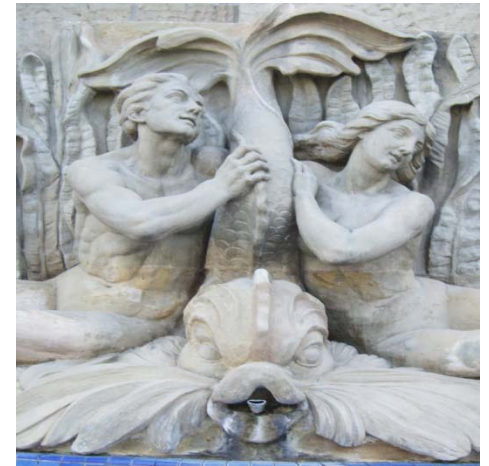
Staff Recommendation

- Staff recommends that the Board of Supervisors take the following actions:
 - Adopt the required findings for the project, including CEQA findings (Attachment A);
 - Accept the Negative Declaration (Attachment B);
 - Adopt a Resolution approving specific amendments to the Seismic Safety and Safety Element, the Land Use Element, and the Conservation Element of the Santa Barbara County Comprehensive Plan (Attachment C);
 - Adopt a Resolution confirming that the Board has considered the recommendations made by the State Board of Forestry and Fire Protection. (Attachment D)



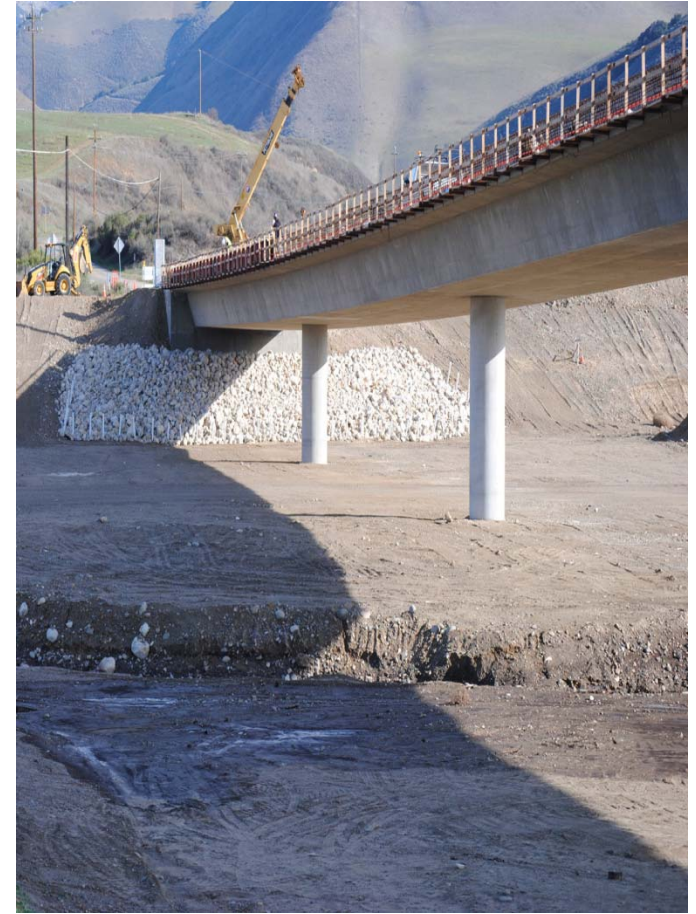
Benefits

- Up-to-date Safety Element goals and policies which will help planners protect future development from natural hazards
- Adopting MJHMP with Safety Element ensures County is eligible for all possible funding from State in event of natural disasters
- References to maps produced by State and Federal agencies creates self-updating Element



Background- Assembly Bill 162

- Signed into law October 7, 2007
- Requirements:
 - Update Safety Element to identify and protect against flood hazards
 - Update Conservation Element to identify areas important to groundwater recharge and stormwater management

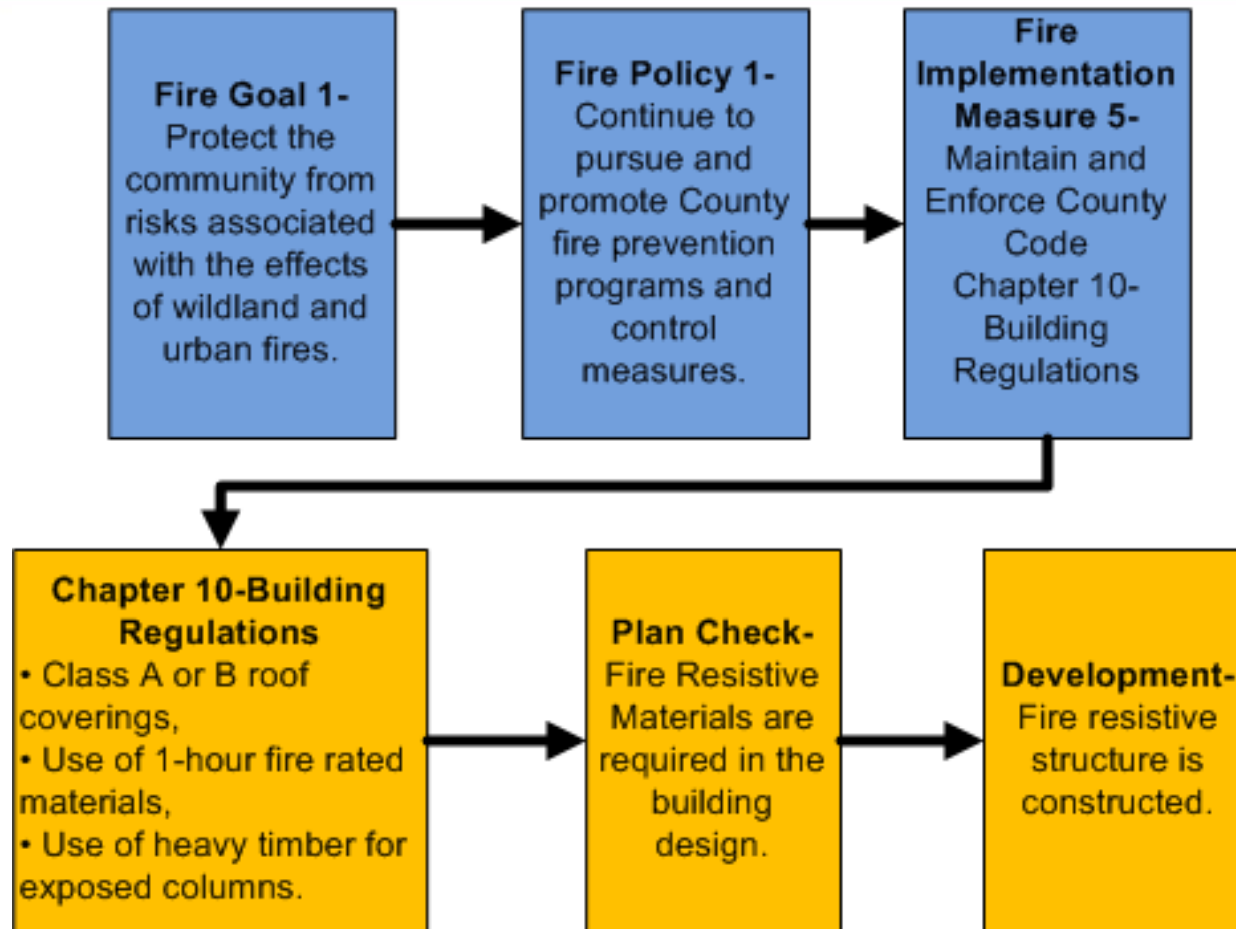


Safety Element Amendments

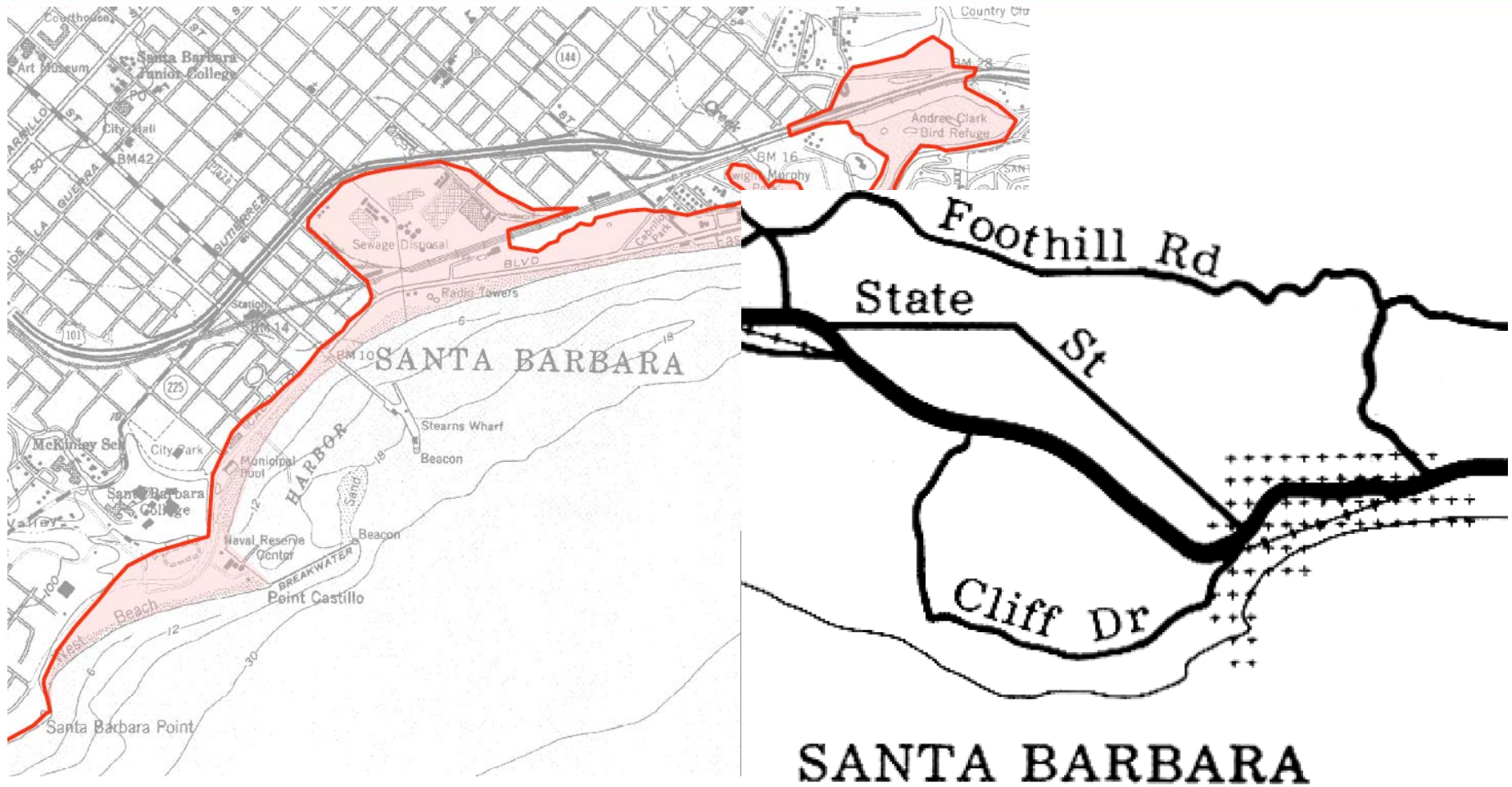
- Flood, Fire, and Geologic hazard protection policies and implementation measures
- Updated fire background narrative and statistics
- Replace out-dated print maps with references to new digital replacements
- MJHMP Addendum



Safety Element Amend.- Policies



Safety Element Amend.- Maps



Land Use Element Amendments

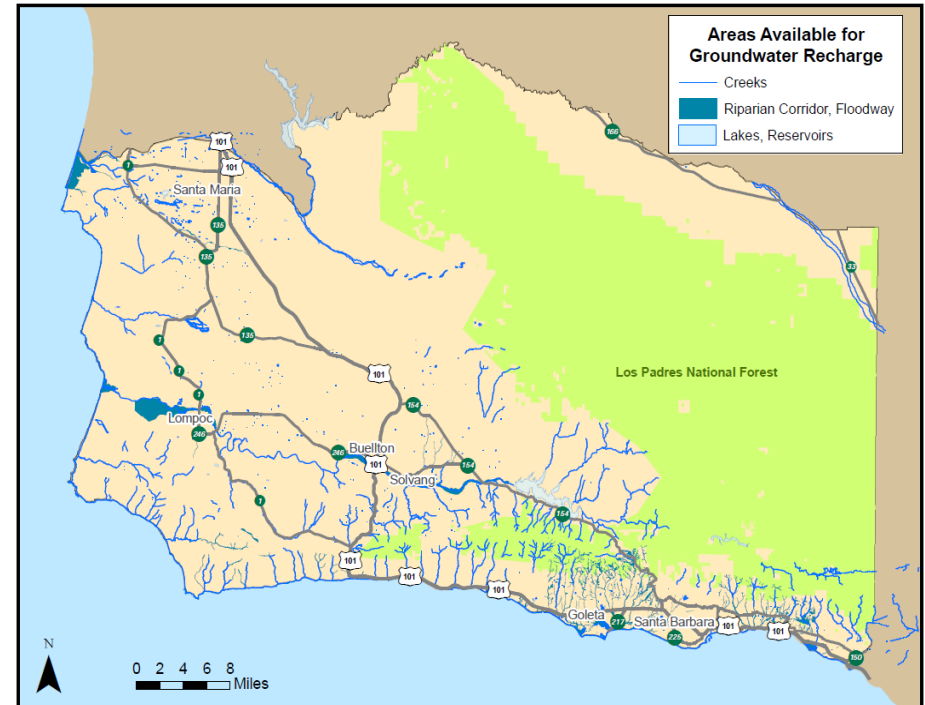
- Revised Flood Hazard Area Policies section to be consistent with Safety Element revisions
- Consistently reference new flood hazard maps and resources



Conservation Element Amendments

Conservation Element

- New Map of Groundwater Recharge Areas
- Revisions to mineral extraction recommendations



Regulatory Review- Local



- Final Technical Advisory Committee (TAC) Review of the Elements was completed in December 2009
- Draft Safety Element sent out for review to all local fire agencies January 2010



Regulatory Review- State



**Board of Forestry
and Fire Protection**

The California Geological Survey

1860

2010



- Draft Safety Element sent out for State regulatory review on January 4, 2010:
 - State Board of Forestry and Fire Protection
 - California Department of Conservation



OFFICE OF LONG RANGE PLANNING

longrange.sbcountyplanning.org

11

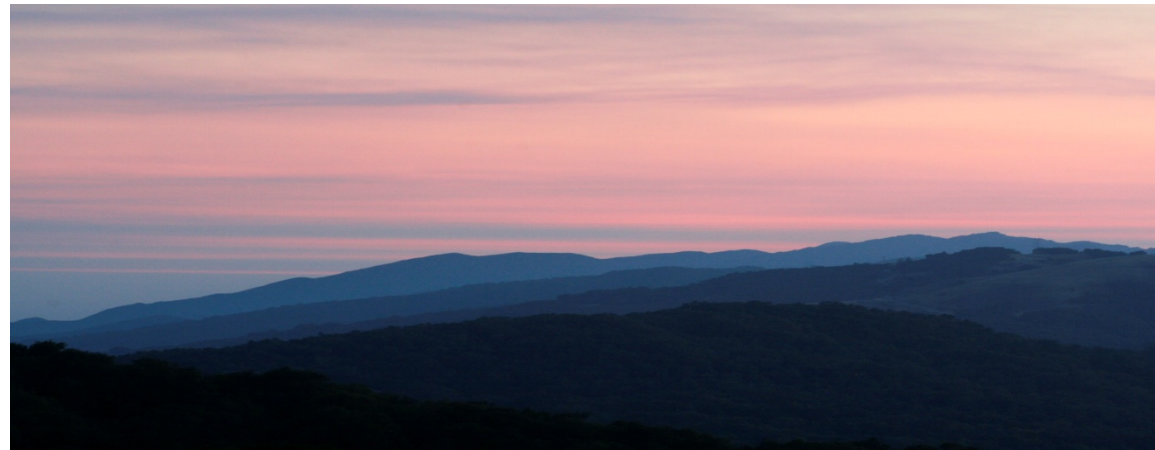
Environmental Review

- Draft Negative Declaration was released for 30-day public review period from April 14th to May 14th
- Finds no potential for new impacts because no new substantive standards in update
- Noticed 123 agencies and interested parties
- Five comments total were received



Planning Commission

- Proposed General Plan update was presented to the County's Planning Commission on June 30, 2010.
- The Commission passed a motion, by a vote of 5-0, to forward staff's recommendation on to the Board of Supervisors.



Recommendations

- The Board of Supervisors should take the following action:
 - Adopt the required findings for the project, including CEQA findings (Attachment A);
 - Accept the Negative Declaration (Attachment B);
 - Adopt a Resolution approving specific amendments to the Seismic Safety and Safety Element, the Land Use Element, and the Conservation Element of the Santa Barbara County Comprehensive Plan (Attachment C);
 - Adopt a Resolution confirming that the Board has considered the recommendations made by the State Board of Forestry and Fire Protection. (Attachment D)



Thank You

