

A photograph of a river valley. In the foreground, there is a large pile of driftwood and several large, light-colored boulders. The river flows through the middle ground. In the background, there is a steep, charred hillside with sparse vegetation, and distant mountains under a clear blue sky.

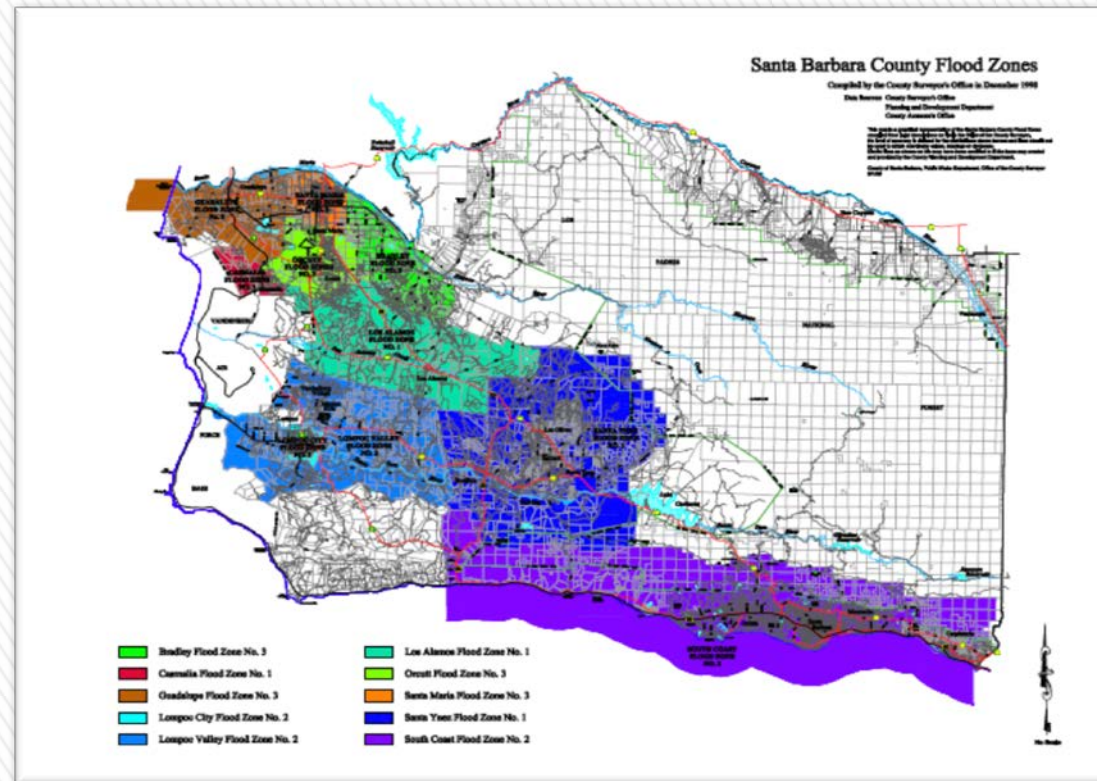
Santa Barbara County Flood Control and Water Conservation District

**Benefit Assessment Program Update
Board of Directors Meeting
June 19, 2018**

2018/01/11

Flood Control Benefit Assessment Program

- » Voter Approved Assessments
- » Assessment Approved with an Annual CPI Adjustment to Preserve Funding Levels
- » Proposed Increase 3.8% for FY 2018-19



Proposed Benefit Assessment Rates

FY 2018-19

	Group A		Group B		Group C		Group D		Group E	
	FY 2018-2019		FY 2018-2019		FY 2018-2019		FY 2018-2019		FY 2018-2019	
	\$/Ac	Min \$ Assmt	\$/Ac	Min \$ Assmt	\$/Ac ¹	Min \$ Assmt	\$/Ac	Min \$ Assmt	\$/Ac	Min \$ Assmt
(over 0.3 Ac only)										
Bradley #3	44.39	13.32	33.29	9.99	0.00	6.70	1.66	0.49	0.16	0.05
Guadalupe #3	23.50	7.04	17.63	5.30	0.00	3.54	0.89	0.27	0.09	0.02
Lompoc City #2	99.16	29.75	74.36	22.30	0.00	14.88	3.73	1.11	0.35	0.10
Lompoc Valley #2	38.72	11.60	29.02	8.70	0.00	5.79	1.44	0.43	0.15	0.03
Los Alamos #1	49.24	14.78	36.94	11.07	0.00	7.38	1.84	0.55	0.18	0.05
Orcutt #3	29.51	8.86	22.13	6.64	0.00	4.44	1.10	0.33	0.11	0.03
Santa Maria #3	94.40	28.33	70.81	21.30	0.00	14.15	3.55	1.07	0.33	0.10
SMR Levee	25.47	7.64	19.10	5.73	0.00	3.83	0.94	0.30	0.10	0.02
Santa Ynez #1	21.75	6.53	16.31	4.89	0.00	3.25	0.81	0.25	0.09	0.02
South Coast #2	165.71	49.71	124.27	37.28	0.00	24.86	6.21	1.87	0.61	0.18



Recommendations



- Approval of actions a, b, c, and d
 - First Reading

- Return July 3, 2018 for Second Reading and Final Adoption (Admin Agenda)