

Laguna County Sanitation District

FY 2013 – 2014
Rates and Fees



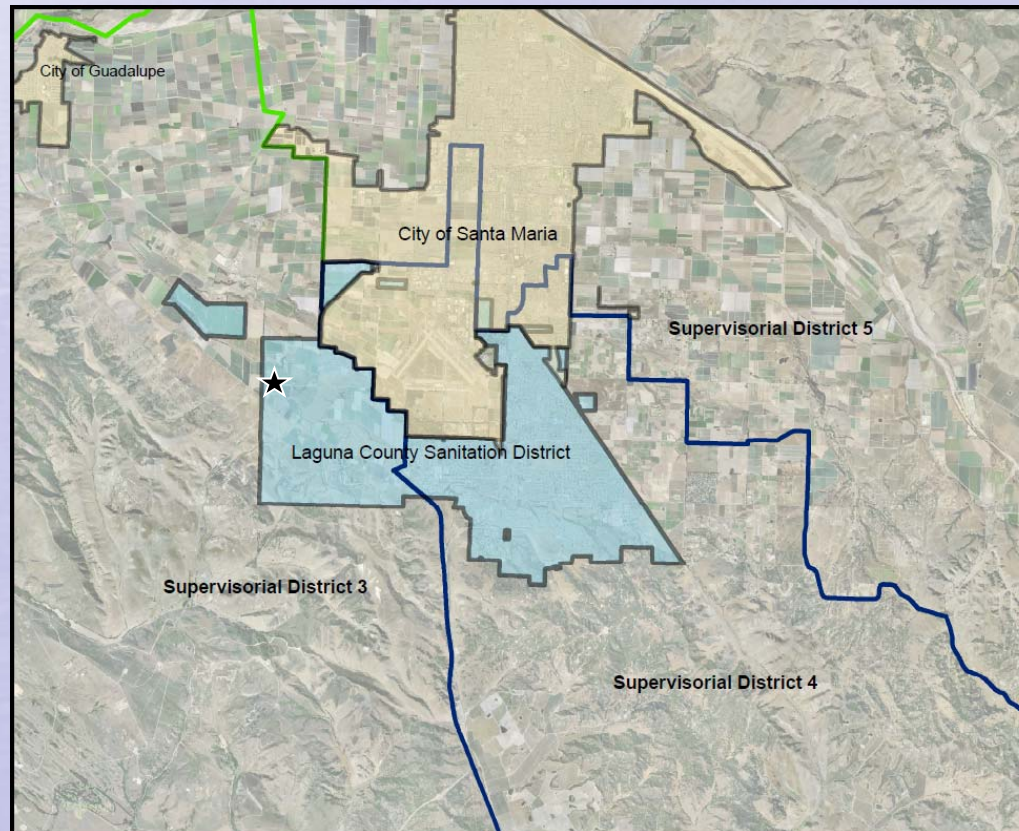
Laguna County Sanitation District



- Dependent special district created in 1958
- Provides wastewater services to Orcutt and unincorporated Santa Maria area
- Regulated by:
 - RWQCB Order R3-2011-0217 (plant)
 - EPA (injection well)
 - SWRCB 2006-0003 (sewer system)
 - APCD (air emissions)
- Conserves and protects resources

Annual Rates and Fees Ordinance

- Public noticing pursuant to Prop 218
 - Mailer to 9,200 parcels and 880 mobile homes
- Hearing date published pursuant to Government Code in Santa Maria Times
- No written responses to date



Sewer Charge Rates

- Pay for annual operation, maintenance, replacement, and reserves
- Collected on the tax roll
- 11% increase proposed for FY 2013-2014
 - Allows for necessary plant upgrades as identified in the Master Plan presented to the Board on October 11, 2011

Master Plan



- Assessed condition of plant and looked at future needs
- Reviewed regulatory criteria
- Compared treatment and discharge alternatives
- Defined Phase 1 (replace existing) and Phase 2 (future capacity) conditions
- Evaluated costs and revenue needs

Proposed Sewer Charge

Residential unit equivalent (RUE) rate

Proposed annual rate	\$725.93
<u>Last year's rate</u>	<u>\$653.99</u>
Rate increase/year	\$ 71.94

Equivalent to \$5.99/month (monthly rate of \$60.49)

Multiple Family Residential	= \$653.33/year
School	= \$37.88 per cap/year
Commercial	= Based on flow and load

How LCSD Compares Countywide

<u>Treatment Level</u>	<u>Agency</u>	<u>Monthly Rate</u>	<u>Inc.</u>
Tertiary	Summerland	\$103.70*	10.0%
	Vandenberg Village	\$ 68.92	4.8%
	Lompoc	\$ 67.52	21.0%
	Laguna	\$ 60.49	11.0%
Secondary	Montecito	\$100.77*	
	Santa Ynez	\$ 73.85*	3.8%
	Cuyama	\$ 66.00	46.7%
	Mission Canyon	\$ 65.08	8.2%
	Los Alamos	\$ 61.73*	1.4%
	Carpinteria	\$ 55.45*	4.5%
	Santa Barbara	\$ 40.78	4.0%
	Goleta Sanitary	\$ 39.33*	2.0%
	Solvang	\$ 33.72	2.1%
	Goleta West Sanitary	\$ 31.48*	
	Guadalupe	\$ 26.65	1.5%
	Santa Maria	\$ 16.59	5.0%
Primary	Mission Hills	\$ 38.42	5.0%
	Buellton	\$ 23.00	9.5%
Average		\$ 54.08	

* These rates include estimated property tax contributions

Total Water Cost Comparison

<u>Agency</u>	<u>Water/Mo</u>	<u>Water and Sewer/Mo</u>
Summerland + Montecito Water	\$69.95	\$173.65
Montecito + Montecito Water	\$69.95	\$170.72
Carpinteria + Carpinteria Valley Water	\$94.04	\$149.49
Cuyama	\$71.45	\$137.45
Santa Ynez + Santa Ynez RWCD 1	\$58.10	\$131.95
Solvang	\$95.63	\$129.35
Goleta Sanitary + Goleta Water	\$83.41	\$122.74
Mission Canyon + Santa Barbara	\$57.25	\$122.33
Lompoc	\$50.54	\$118.06
Goleta West Sanitary + Goleta Water	\$83.41	\$114.89
Los Alamos	\$44.06	\$105.79
Vandenberg Village	\$33.56	\$102.48
Santa Barbara	\$57.25	\$98.03
Laguna + Golden State Water	\$33.22	\$93.71
Mission Hills	\$42.56	\$80.98
Santa Maria	\$59.67	\$76.26
Buellton	\$40.90	\$63.90
Guadalupe	\$35.69	\$62.34
Average		\$110.79

Developer Impact Fees



- Paid by development for sewer system equity buy-in
 - Trunk line fees fund collection system improvements
 - Connection fees fund treatment and disposal improvements

Developer Impact Fees

- Fees adjusted by indices pursuant to ordinances and agreements
- Connection fee (1.8%) per RUE \$6,415
- Trunk Line Fees
 - Dutard trunk line (1.8%) per RUE \$ 910
 - Bradley trunk line (3.25%) per RUE \$2,129

Recommendations

- Adopt ordinance setting the rates and fees for FY 2013/2014

