

APN	OWNER
105-020-018	LEARD
105-020-038	MOCALP
105-020-041	LEARD
105-020-052	LEARD
105-020-060	LEARD
105-020-061	LEARD
105-020-062	LEARD
105-020-063	OASIS
105-020-064	OASIS
105-020-068	SOUTHPONT
105-020-068	LEARD
105-020-070	SOUTHPONT

FEMA FLOOD ZONES
 ZONE SHADED X: AREAS OF 0.2% ANNUAL CHANCE FLOOD; AREAS OF 1% ANNUAL CHANCE FLOOD WITH DEPTH 5' OF LESS THAN 1 FOOT OR WITH DRAINAGE AREAS LESS THAN 1 SQUARE MILE; AND AREAS PROTECTED BY LEVEES FROM 1% ANNUAL CHANCE FLOOD.
 ZONE AE: AREAS SUBJECT TO INUNDATION BY THE 1% ANNUAL CHANCE FLOOD EVENT DETERMINED BY DETAILED METHODS. DEFS ARE SHOWN WITH THESE ZONES.
 ZONE X: AREAS IDENTIFIED IN A COMMUNITY'S FIS AS AREAS OF MODERATE OR MINIMAL HAZARD FROM THE PRINCIPAL SOURCE OF FLOOD IN THE AREA.

TOPOGRAPHY
 TOPOGRAPHY INFORMATION OBTAINED FROM SANTA BARBARA COUNTY FLOOD CONTROL DISTRICT - TOPOGRAPHIC MAP OF THE SANTA MARIA VALLEY, SANTA BARBARA COUNTY, CALIFORNIA, AUGUST, 1992 - NOVEMBER, 1993.
 FLOOD PLAN INFORMATION OBTAINED FROM FEMA'S MAP SERVICE CENTER - MAP AND PANEL 060830CA210; EFFECTIVE 12/4/2012

NO.	DATE	REVISION	BLOCK	APPR.	PREPARED FOR:

Stantec
 3845 Sand Hill Way, Suite 100, San Bruno, CA 94066
 Phone: (650) 923-2345

**OASIS SENIOR CENTER
 CONSTRAINTS EXHIBIT**

ORCUTT, CALIFORNIA

STANTEC PROJECT NO.
20641106000

SHEET
1 of 1

PLAN DATE
MAY 2017

FOR REDUCED PLANS
 ORIGINAL SCALE IN INCHES

0 1 2 3

SCALE: 1"=100'

0 100 200 300

REVISION: THIS DOCUMENT IS PROVIDED AS A SERVICE OF AN ELECTRONIC FORM. THE RELIABILITY OF THE ELECTRONIC FILE DOES NOT CONSTITUTE THE RELIABILITY OF THE PRINTED FORM. YOUR PROJECT. IN THE EVENT OF AN ELECTRONIC FILE, A HARD COPY SHOULD BE OBTAINED FROM THE PROFESSIONAL SERVICE PROVIDER. IN THE EVENT OF A PRINTED FORM, A HARD COPY SHOULD BE OBTAINED FROM THE PROFESSIONAL SERVICE PROVIDER. STANTEC SHALL NOT BE RESPONSIBLE FOR ANY REVISIONS MADE TO THE ELECTRONIC FILE, OR ANY PRINTED FORMS DERIVED FROM THE ELECTRONIC FILE, WHEN THE ORIGINAL, HARD COPY IS NOT AVAILABLE. STANTEC SHALL NOT BE RESPONSIBLE FOR ANY REVISIONS MADE TO THE ELECTRONIC FILE, OR ANY PRINTED FORMS DERIVED FROM THE ELECTRONIC FILE, WHEN THE ORIGINAL, HARD COPY IS NOT AVAILABLE. STANTEC SHALL NOT BE RESPONSIBLE FOR ANY REVISIONS MADE TO THE ELECTRONIC FILE, OR ANY PRINTED FORMS DERIVED FROM THE ELECTRONIC FILE, WHEN THE ORIGINAL, HARD COPY IS NOT AVAILABLE. STANTEC SHALL NOT BE RESPONSIBLE FOR ANY REVISIONS MADE TO THE ELECTRONIC FILE, OR ANY PRINTED FORMS DERIVED FROM THE ELECTRONIC FILE, WHEN THE ORIGINAL, HARD COPY IS NOT AVAILABLE.

In 1997, the Orcutt Community Plan was adopted by the Board of Supervisors.

Key Site 18 was identified as the location of **Orcutt Creek Park**.

This 10.42-acre active park includes
sports fields,
picnic areas for outdoor gatherings,
basketball and tennis courts,
restrooms, and parking.
Class 1 Multi-pursue trail running along Orcutt Creek.

Adopted 10/1997, The county's CIP and the AB 1600 program included \$1,771, 000 (1997 dollars) for the development of the **Orcutt Creek Park**.

ORCUTT COMMUNITY PLAN

**TABLE 17
COMMUNITY & NEIGHBORHOOD PARK PRIORITY TABLE***

COMMUNITY PARKS				
Park	Size	Use	Description	Method of Acquisition
Oak Knolls Park	15.1 ac.	Active	Ballfields, play areas, restrooms, picnic areas, basketball courts, etc.	County Owned
Orcutt Creek Park	10.42 ac.	Active	Play fields, restrooms, picnic areas, basketball and tennis courts, etc.	Dedication/Purchase
Stubblefield School	5.00 ac.	Active	Ballfields, play and picnic areas, and trails	Dedication
Union Valley Park	46.20 ac.	Active	Ballfields, play and picnic areas, restrooms, pond, basketball and tennis courts, trails, etc.	Donation/Partial Dedication/Purchase
Site 12	5.00 ac.	Active	Play fields, restrooms, picnic areas, basketball and tennis courts, etc.	Dedication
Solomon School	5.00 ac.	Active	Ballfields, play and picnic areas	Dedication
Site 22	15.00 ac.	Active	Ballfields, play and picnic areas, restrooms, basketball courts, etc.	Donation/Partial Dedication/Purchase

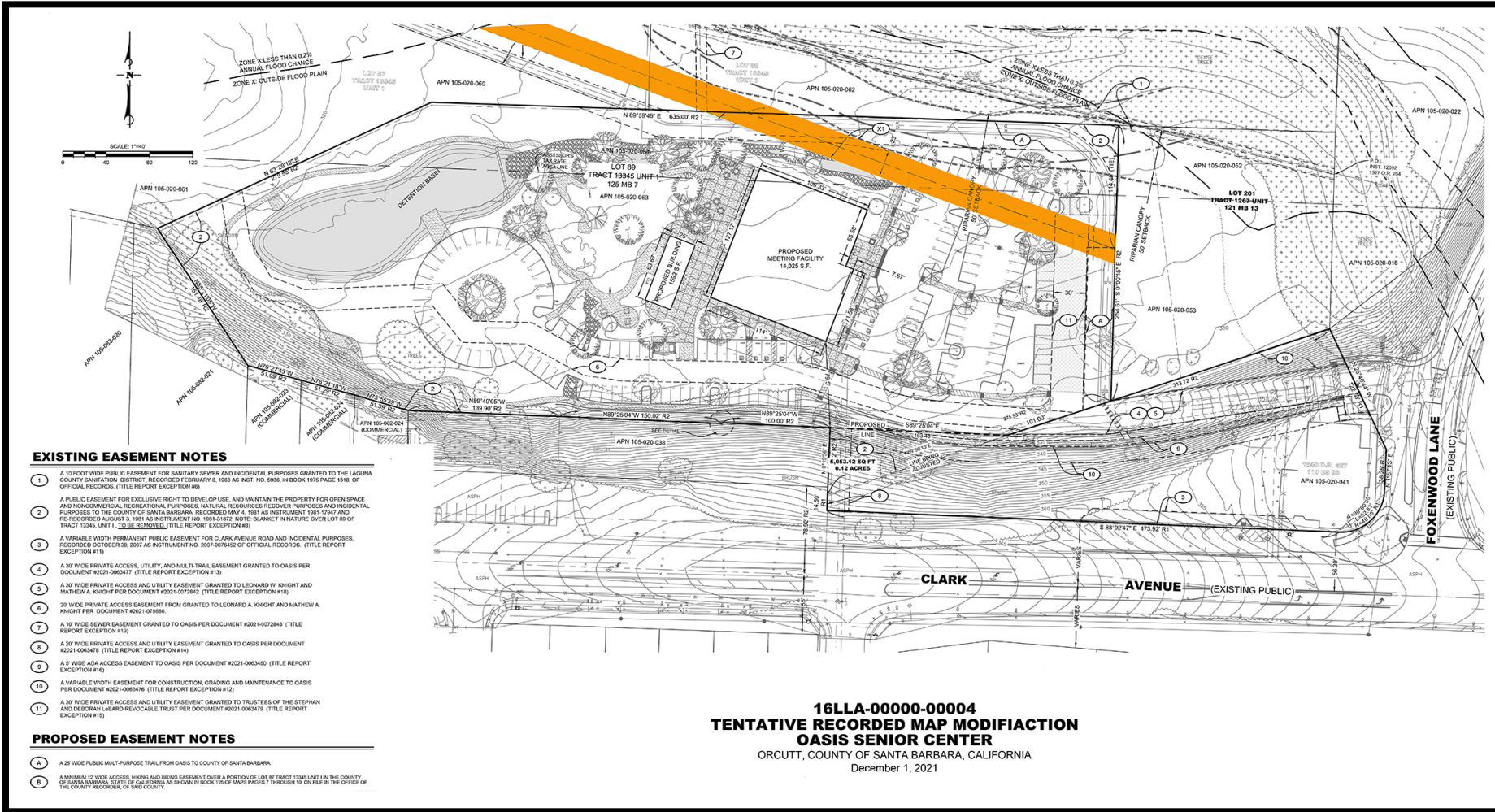


The OASIS center meets these recreational needs for the community as listed in the OCP.

It will include

- a new and improved access to the site,
 - a parking lot,
 - recreational park,
 - Senior center with restrooms,
- major segment of the Multi-Purpose trail.
- This project will serve the seniors and residents in Orcutt.

**This project is consistent with the
Orcutt Community Plan**

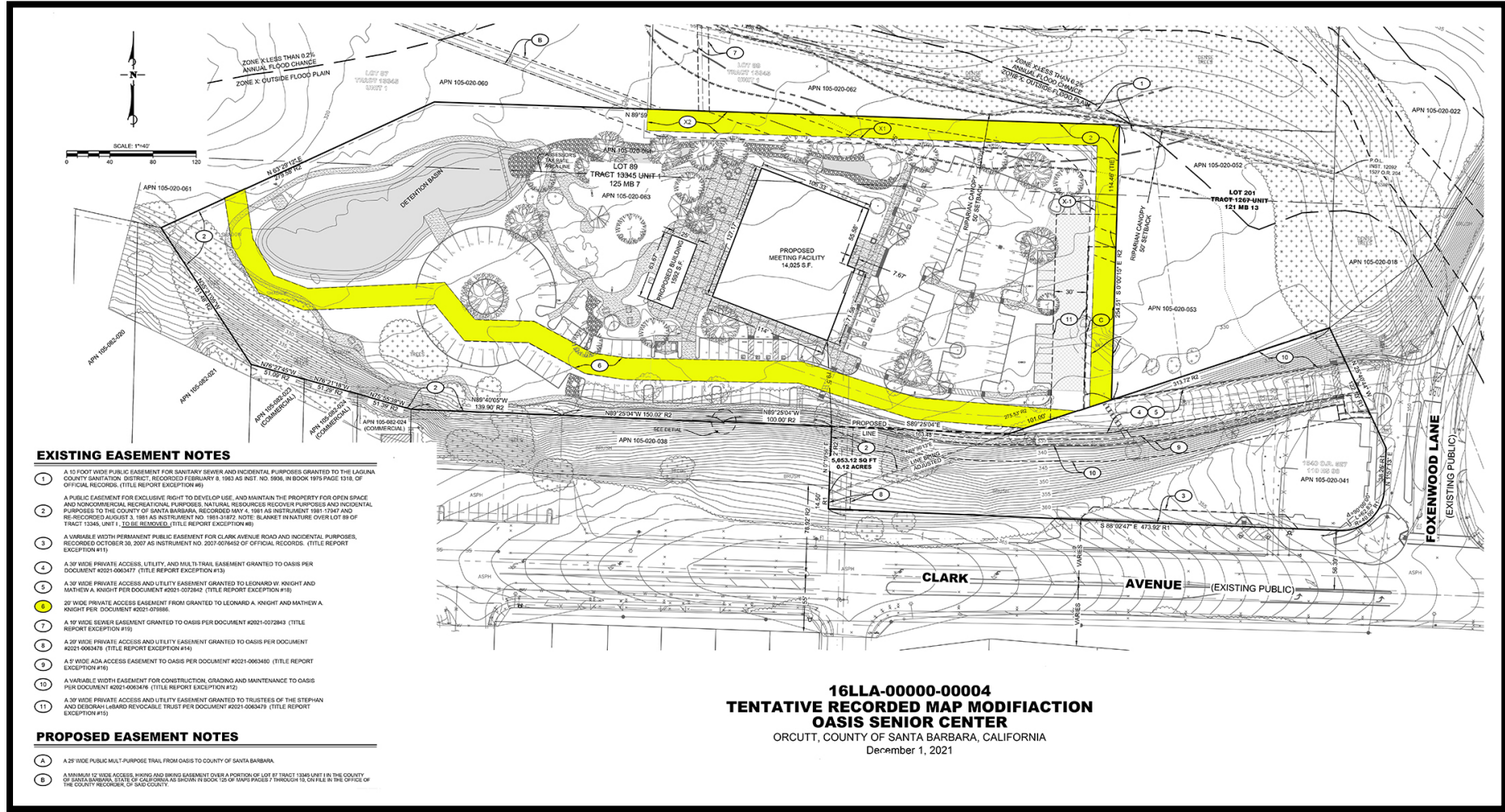


Terminated Oil Easement

25' wide Private Easement for access to Lot

Termination of Easement

Doc # 2021-0068757
 Recorded on 9/29/21.



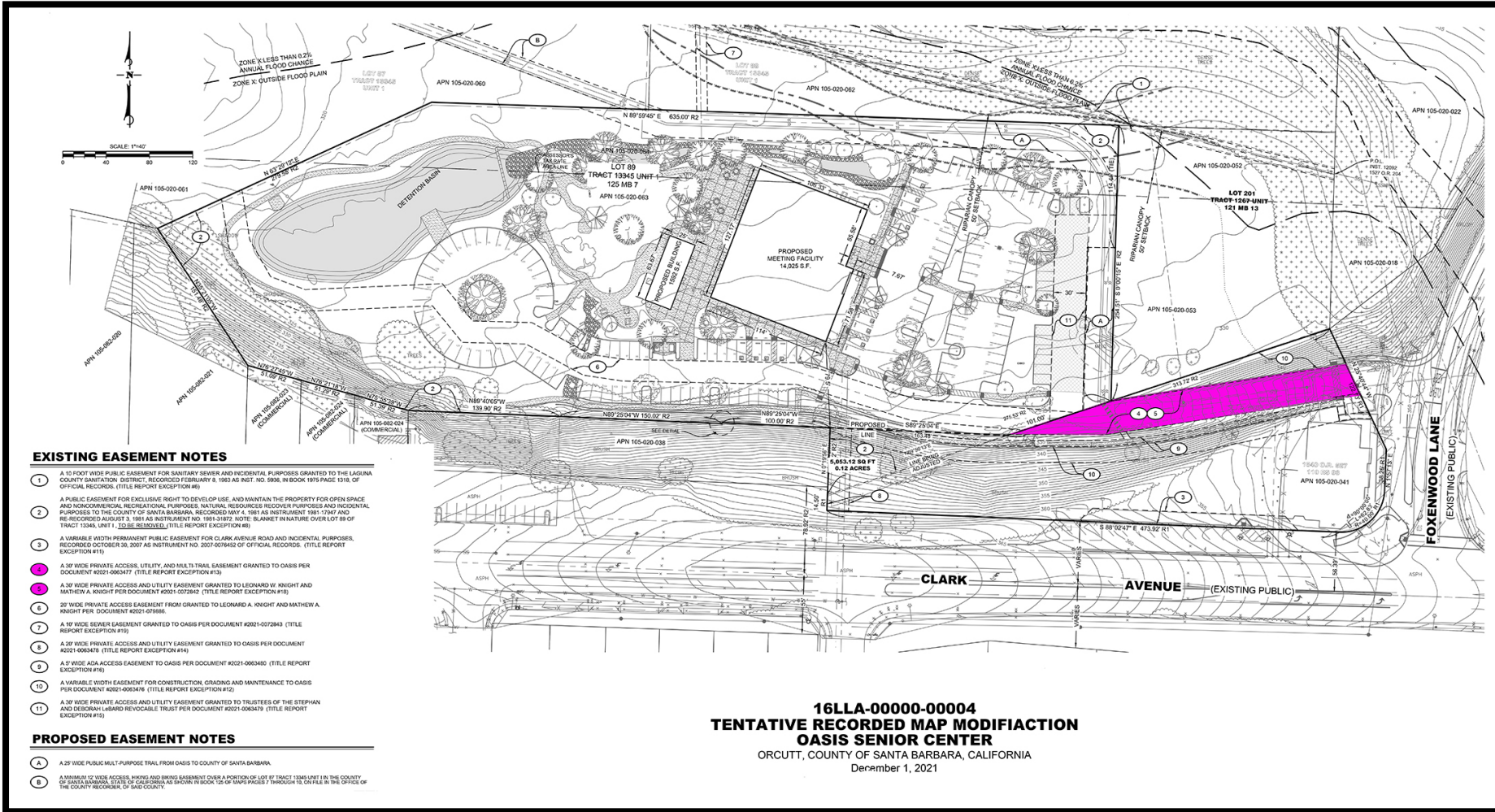
Quitclaimed Easement

20' wide Private Easement for access
 2021-0079885
 recorded on 11/17/21.

New Access Easement

New 20' wide private access and utility easement.
 2021-0064479
 recorded on 11/17/2021

- EXISTING EASEMENT NOTES**
- 1 A 10 FOOT WIDE PUBLIC EASEMENT FOR SANITARY SEWER AND INCIDENTAL PURPOSES GRANTED TO THE LAGUNA COUNTY SANITATION DISTRICT, RECORDED FEBRUARY 9, 1983 AS INST. NO. 5906, IN BOOK 1915 PAGE 1318, OF OFFICIAL RECORDS. (TITLE REPORT EXCEPTION #8)
 - 2 A PUBLIC EASEMENT FOR EXCLUSIVE RIGHT TO DEVELOP USE, AND MAINTAIN THE PROPERTY FOR OPEN SPACE AND NONCOMMERCIAL RECREATIONAL PURPOSES, NATURAL RESOURCES RECOVER PURPOSES AND INCIDENTAL PURPOSES TO THE COUNTY OF SANTA BARBARA, RECORDED MAY 4, 1981 AS INSTRUMENT NO. 1981-31872. NOTE: BLANKET IN NATURE OVER LOT 89 OF TRACT 13346, UNIT 1, 12.56 ACRES. (TITLE REPORT EXCEPTION #8)
 - 3 A VARIABLE WIDTH PERMANENT PUBLIC EASEMENT FOR CLARK AVENUE ROAD AND INCIDENTAL PURPOSES, RECORDED OCTOBER 30, 2007 AS INSTRUMENT NO. 2007-0076452 OF OFFICIAL RECORDS. (TITLE REPORT EXCEPTION #11)
 - 4 A 30' WIDE PRIVATE ACCESS, UTILITY, AND MULTITRAIL EASEMENT GRANTED TO OASIS PER DOCUMENT #2021-0063477 (TITLE REPORT EXCEPTION #13)
 - 5 A 30' WIDE PRIVATE ACCESS AND UTILITY EASEMENT GRANTED TO LEONARD W. KNIGHT AND MATHEVA A. KNIGHT PER DOCUMENT #2021-0072843 (TITLE REPORT EXCEPTION #18)
 - 6 20' WIDE PRIVATE ACCESS EASEMENT FROM GRANTED TO LEONARD A. KNIGHT AND MATHEVA A. KNIGHT PER DOCUMENT #2021-029886.
 - 7 A 10' WIDE SEWER EASEMENT GRANTED TO OASIS PER DOCUMENT #2021-0072843 (TITLE REPORT EXCEPTION #18)
 - 8 A 20' WIDE PRIVATE ACCESS AND UTILITY EASEMENT GRANTED TO OASIS PER DOCUMENT #2021-0063478 (TITLE REPORT EXCEPTION #14)
 - 9 A 5' WIDE ADA ACCESS EASEMENT TO OASIS PER DOCUMENT #2021-0063480 (TITLE REPORT EXCEPTION #18)
 - 10 A VARIABLE WIDTH EASEMENT FOR CONSTRUCTION, GRADING AND MAINTENANCE TO OASIS PER DOCUMENT #2021-0063476 (TITLE REPORT EXCEPTION #12)
 - 11 A 30' WIDE PRIVATE ACCESS AND UTILITY EASEMENT GRANTED TO TRUSTEES OF THE STEPHAN AND STEPHAN LEONARD REVOCABLE TRUST PER DOCUMENT #2021-0063479 (TITLE REPORT EXCEPTION #15)
- PROPOSED EASEMENT NOTES**
- A 20' WIDE PUBLIC MULT-PURPOSE TRAIL FROM OASIS TO COUNTY OF SANTA BARBARA.
 - A 20' WIDE PRIVATE ACCESS AND UTILITY EASEMENT OVER A PORTION OF LOT 89 OF TRACT 13346 UNIT IN THE COUNTY OF SANTA BARBARA, STATE OF CALIFORNIA AS SHOWN IN BOOK 12 OF MAPS PAGES 7 THROUGH 10, ON FILE IN THE OFFICE OF THE COUNTY REGISTRAR, OF SAAS COUNTY.



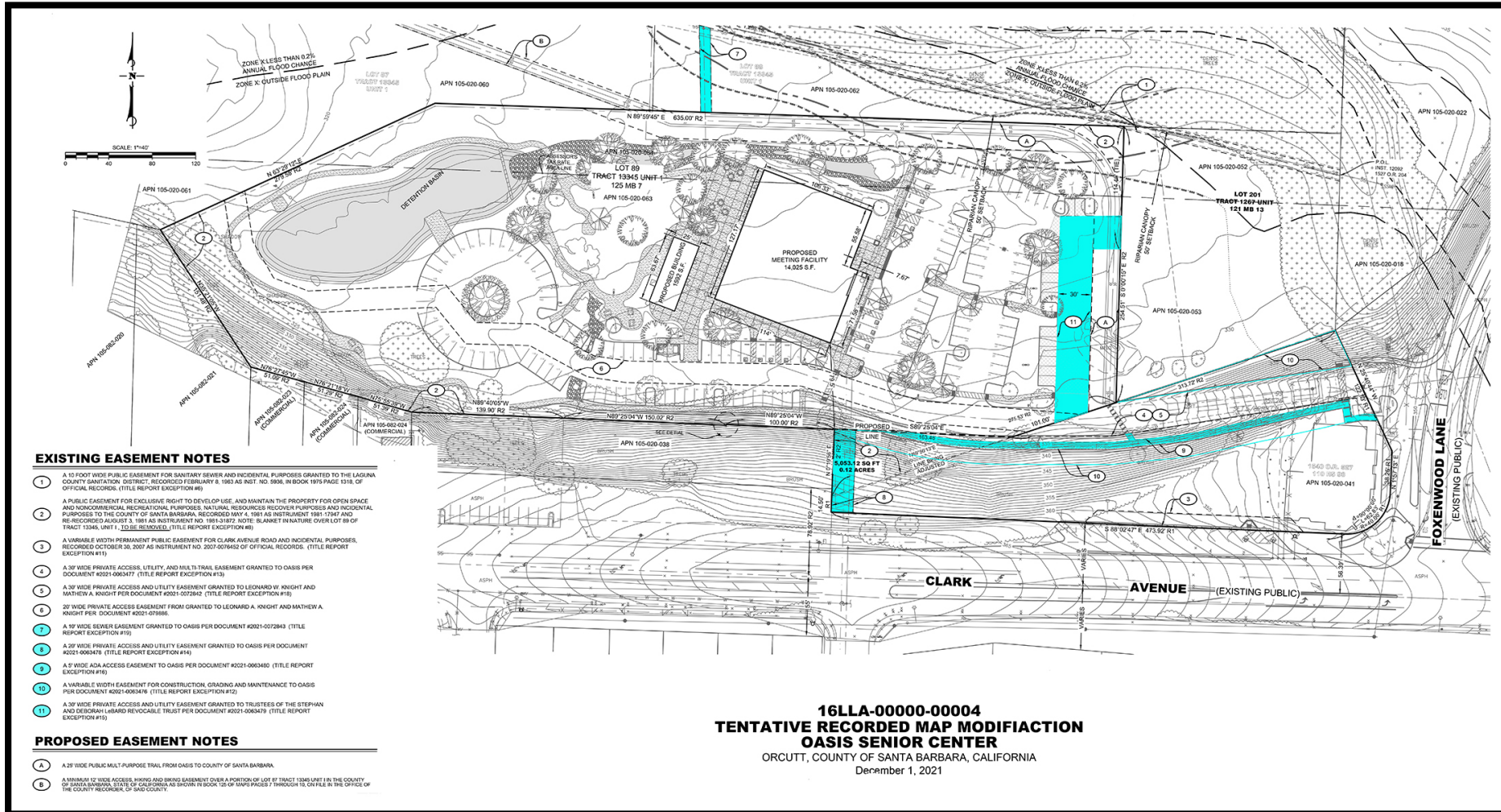
Existing Easements

30' wide private access, utility, & multi-trail easement for OASIS, Knight, and County.

2021-0063477

2021-0063479

Recorded 9/7/2021



Existing Easements

10' wide sewer easement.

20' wide private access & utility easement.

5' ADA Access easement.

Variable width easement for construction, grading and maintenance.

30' wide Private Access & Utility Easement.

EXISTING EASEMENT NOTES

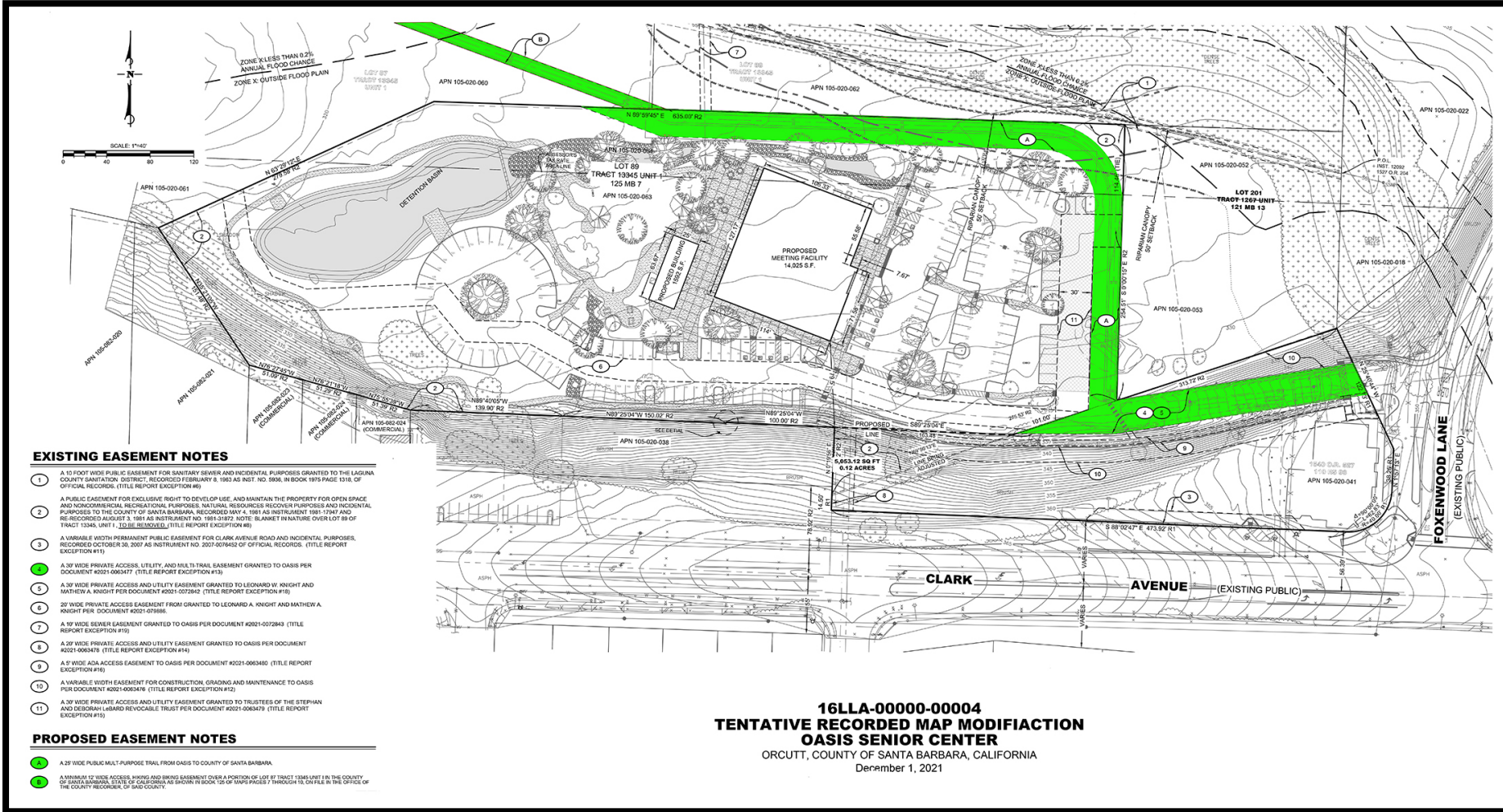
- 1 A 10 FOOT WIDE PUBLIC EASEMENT FOR SANITARY SEWER AND INCIDENTAL PURPOSES GRANTED TO THE LAGUNA COUNTY SANITATION DISTRICT, RECORDED FEBRUARY 9, 1983 AS INST. NO. 5906, IN BOOK 1915 PAGE 1318, OF OFFICIAL RECORDS. (TITLE REPORT EXCEPTION #8)
- 2 A PUBLIC EASEMENT FOR EXCLUSIVE RIGHT TO DEVELOP, USE, AND MAINTAIN THE PROPERTY FOR OPEN SPACE AND NONCOMMERCIAL RECREATIONAL PURPOSES, NATURAL RESOURCES RECOVER PURPOSES AND INCIDENTAL PURPOSES TO THE COUNTY OF SANTA BARBARA, RECORDED MAY 4, 1981 AS INSTRUMENT NO. 1981-01872. NOTE: BLANKET IN NATURE OVER LOT 89 OF TRACT 13346, UNIT 1. (TITLE REPORT EXCEPTION #8)
- 3 A VARIABLE WIDTH PERMANENT PUBLIC EASEMENT FOR CLARK AVENUE ROAD AND INCIDENTAL PURPOSES, RECORDED OCTOBER 30, 2007 AS INSTRUMENT NO. 2007-0076452 OF OFFICIAL RECORDS. (TITLE REPORT EXCEPTION #11)
- 4 A 30' WIDE PRIVATE ACCESS, UTILITY, AND MULTITRAIL EASEMENT GRANTED TO OASIS PER DOCUMENT #2021-0063477 (TITLE REPORT EXCEPTION #13)
- 5 A 30' WIDE PRIVATE ACCESS AND UTILITY EASEMENT GRANTED TO LEONARD W. KNIGHT AND MATHEVA A. KNIGHT PER DOCUMENT #2001-0072843 (TITLE REPORT EXCEPTION #18)
- 6 20' WIDE PRIVATE ACCESS EASEMENT FROM GRANTED TO LEONARD A. KNIGHT AND MATHEVA A. KNIGHT PER DOCUMENT #2001-029886.
- 7 A 10' WIDE SEWER EASEMENT GRANTED TO OASIS PER DOCUMENT #2021-0072843 (TITLE REPORT EXCEPTION #18)
- 8 A 20' WIDE PRIVATE ACCESS AND UTILITY EASEMENT GRANTED TO OASIS PER DOCUMENT #2021-0063478 (TITLE REPORT EXCEPTION #14)
- 9 A 5' WIDE ADA ACCESS EASEMENT TO OASIS PER DOCUMENT #2021-0063480 (TITLE REPORT EXCEPTION #18)
- 10 A VARIABLE WIDTH EASEMENT FOR CONSTRUCTION, GRADING AND MAINTENANCE TO OASIS PER DOCUMENT #2021-0063476 (TITLE REPORT EXCEPTION #12)
- 11 A 30' WIDE PRIVATE ACCESS AND UTILITY EASEMENT GRANTED TO TRUSTEES OF THE STEPHAN AND STEPHAN LEONARD REVOCABLE TRUST PER DOCUMENT #2021-0063479 (TITLE REPORT EXCEPTION #15)

PROPOSED EASEMENT NOTES

- A A 30' WIDE PUBLIC-MULTI-PURPOSE TRAIL FROM OASIS TO COUNTY OF SANTA BARBARA.
- B A 10' WIDE PRIVATE ACCESS, UTILITY AND TRAIL EASEMENT OVER A PORTION OF LOT 89 OF TRACT 13346 UNIT IN THE COUNTY OF SANTA BARBARA, STATE OF CALIFORNIA AS SHOWN IN BOOK 12 OF MAPS PAGES 7 THROUGH 10, ON FILE IN THE OFFICE OF THE COUNTY REGISTRAR, OF SAO COUNTY.

16LLA-00000-00004
TENTATIVE RECORDED MAP MODIFICATION
OASIS SENIOR CENTER

ORCUTT, COUNTY OF SANTA BARBARA, CALIFORNIA
 December 1, 2021



- EXISTING EASEMENT NOTES**
- 1 A 10 FOOT WIDE PUBLIC EASEMENT FOR SANITARY SEWER AND INCIDENTAL PURPOSES GRANTED TO THE LAGUNA COUNTY SANITATION DISTRICT, RECORDED FEBRUARY 8, 1983 AS INSTRUMENT NO. 3006, IN BOOK 1915 PAGE 1318, OF OFFICIAL RECORDS. (TITLE REPORT EXCEPTION #6)
 - 2 A PUBLIC EASEMENT FOR EXCLUSIVE RIGHT TO DEVELOP, USE, AND MAINTAIN THE PROPERTY FOR OPEN SPACE AND NONCOMMERCIAL RECREATIONAL PURPOSES, NATURAL RESOURCES RECOVERY PURPOSES AND INCIDENTAL PURPOSES TO THE COUNTY OF SANTA BARBARA, RECORDED MAY 4, 1981 AS INSTRUMENT 1981-1841 AND RECORDED AUGUST 3, 1981 AS INSTRUMENT NO. 1981-31972. NOTE: BLANKET IN NATURE OVER LOT 89 OF TRACT 13345, UNIT 1. (TITLE REPORT EXCEPTION #6)
 - 3 A VARIABLE WIDTH PERMANENT PUBLIC EASEMENT FOR CLARK AVENUE ROAD AND INCIDENTAL PURPOSES, RECORDED OCTOBER 30, 2007 AS INSTRUMENT NO. 2007-0076452 OF OFFICIAL RECORDS. (TITLE REPORT EXCEPTION #11)
 - 4 A 30' WIDE PRIVATE ACCESS, UTILITY, AND MILE-TO-TRAIL EASEMENT GRANTED TO OASIS PER DOCUMENT #2021-0063477. (TITLE REPORT EXCEPTION #13)
 - 5 A 30' WIDE PRIVATE ACCESS AND UTILITY EASEMENT GRANTED TO LEONARD W. KNIGHT AND MATHEVA A. KNIGHT PER DOCUMENT #2001-0072843. (TITLE REPORT EXCEPTION #16)
 - 6 30' WIDE PRIVATE ACCESS EASEMENT FROM GRANTED TO LEONARD A. KNIGHT AND MATHEVA A. KNIGHT PER DOCUMENT #2001-078886.
 - 7 A 10' WIDE SEWER EASEMENT GRANTED TO OASIS PER DOCUMENT #2021-0072843. (TITLE REPORT EXCEPTION #16)
 - 8 A 20' WIDE PRIVATE ACCESS AND UTILITY EASEMENT GRANTED TO OASIS PER DOCUMENT #2021-0063478. (TITLE REPORT EXCEPTION #14)
 - 9 A 9' WIDE ADA ACCESS EASEMENT TO OASIS PER DOCUMENT #2021-0063480. (TITLE REPORT EXCEPTION #16)
 - 10 A VARIABLE WIDTH EASEMENT FOR CONSTRUCTION, GRADING AND MAINTENANCE TO OASIS PER DOCUMENT #2021-0063476. (TITLE REPORT EXCEPTION #12)
 - 11 A 30' WIDE PRIVATE ACCESS AND UTILITY EASEMENT GRANTED TO TRUSTEES OF THE STEPHAN AND DEBRAH LEHARD REVOCABLE TRUST PER DOCUMENT #2021-0063479. (TITLE REPORT EXCEPTION #15)

- PROPOSED EASEMENT NOTES**
- 12 A 25' WIDE PUBLIC MULTI-PURPOSE TRAIL FROM OASIS TO COUNTY OF SANTA BARBARA.
 - 13 A 30' WIDE PRIVATE ACCESS, UTILITY AND MILE-TO-TRAIL EASEMENT GRANTED TO OASIS PER DOCUMENT #2021-0063477. (TITLE REPORT EXCEPTION #13)

16LLA-00000-00004
TENTATIVE RECORDED MAP MODIFICATION
OASIS SENIOR CENTER
ORCUTT, COUNTY OF SANTA BARBARA, CALIFORNIA
December 1, 2021

Existing & Proposed Easements

30' wide private access, utility, & multi-trail easement.

25' wide public multi-purpose trail easement.

A minimum 12' wide access, hiking and biking easement.





