

# BEACON

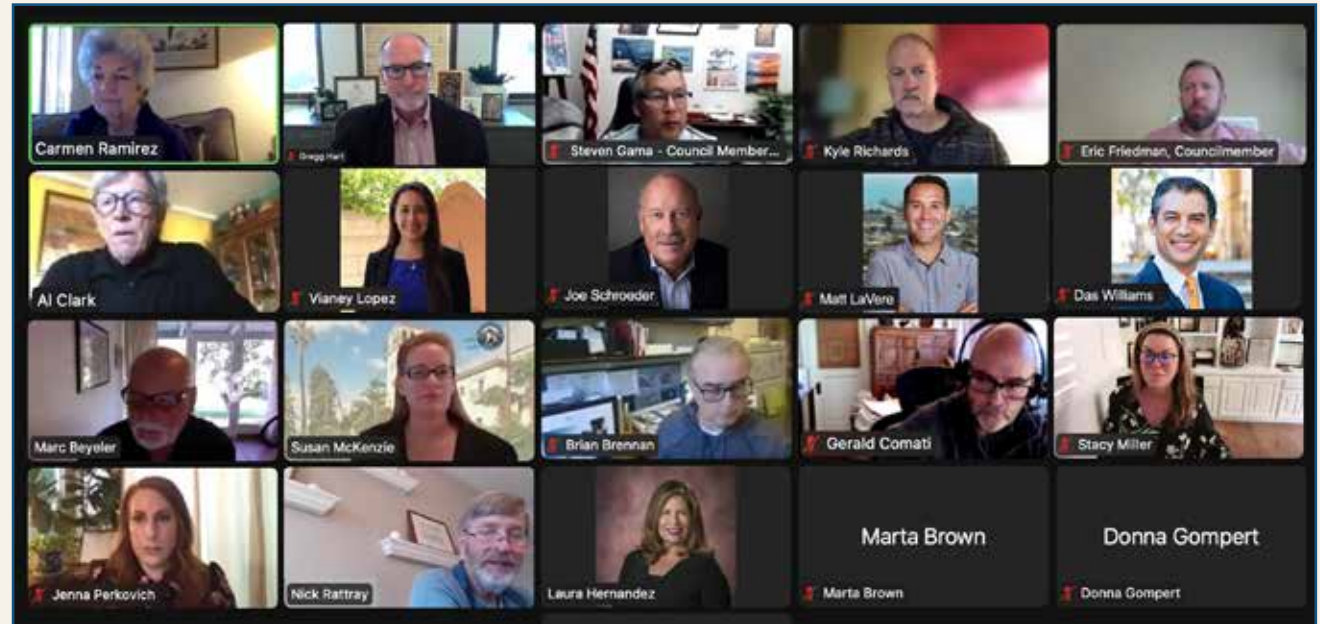
**Beach Erosion Authority for Clean Oceans and Nourishment**  
*Ventura and Santa Barbara Counties*

*Beaches Have  
No Boundaries!*



# Who We Are and What We Do

BEACON is the Beach Erosion Authority for Clean Oceans and Nourishment, a California Joint Powers Authority (JPA) consisting of eight local governments working collectively to address coastal erosion within the Central California Coast. Established in 1986, our mission is to develop scientific, resilient solutions to protect our coastline from impending sea level rise.



BEACON develops scientific and resilient solutions that preserve our beaches and our coast by using resources that nature already provides—mainly sediment and sand—to enhance natural conditions and protect man-made infrastructure. BEACON creates truly resilient and sustainable shorelines through beach nourishment projects, beach and dune restoration projects, and living shoreline projects.

BEACON is made up of eight member agencies including the County of Santa Barbara, County of Ventura, City of Carpinteria, City of Goleta, City of Oxnard, City of Port Hueneme, City of Santa Barbara and City of Ventura. Two supervisors from each county and one council person from each city make up the BEACON Board of Directors, for a total of ten members.

The BEACON Executive Committee provides the Board advice and recommendations on programs and policy, and the Science Advisory Committee provides the Board professional technical science advice to support decision making.

# The BEACON Coast



BEACON's jurisdiction stretches from Point Conception in the north coast, to Point Mugu in the south coast.

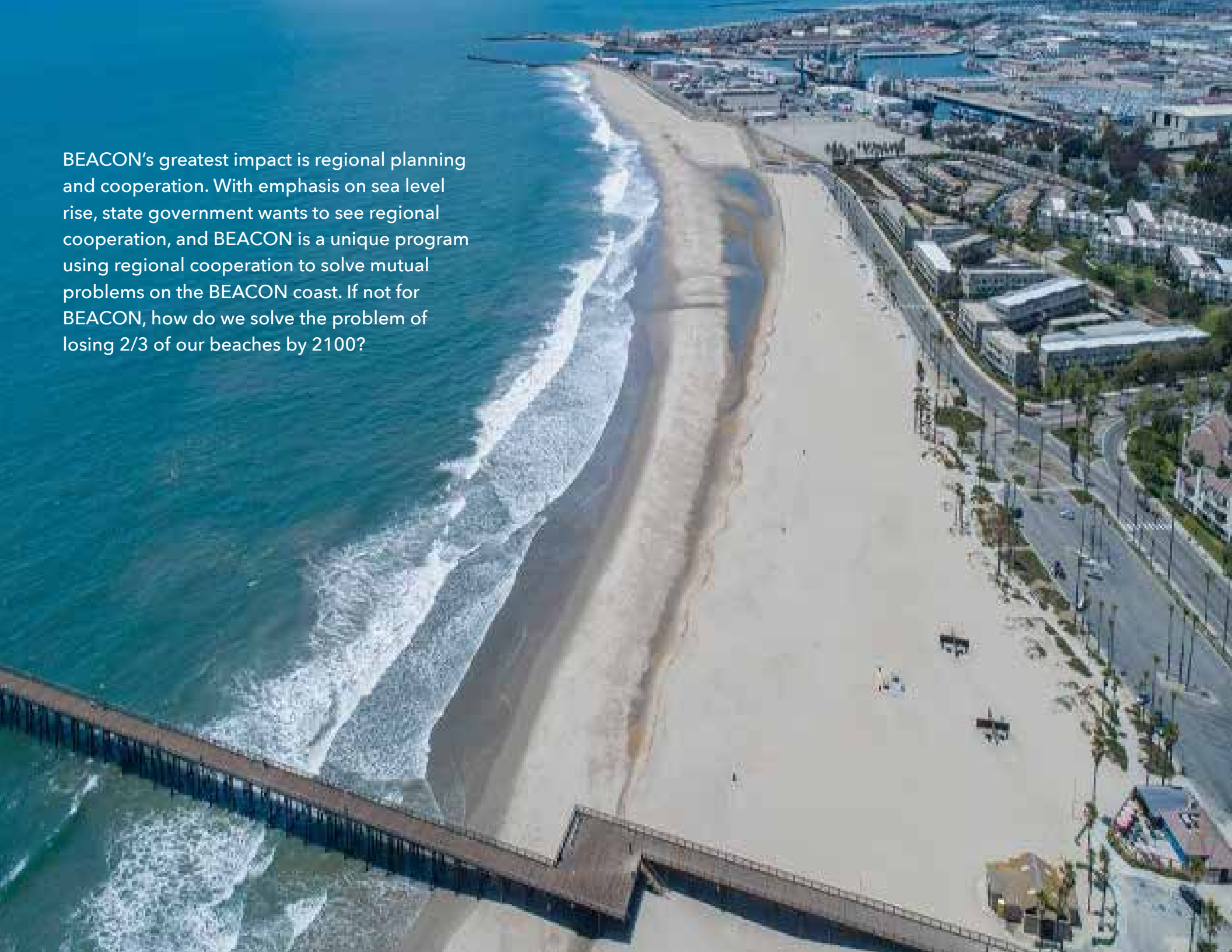
# How We Do It and Why It Matters

BEACON's unique regional cooperation allows us to look at our coastal policies as a whole, understanding that what is happening in one coastal area often affects neighboring jurisdictions. BEACON's science committee is able to gather scientific data and share with all jurisdictions, and allows the Board to use economies of scale to plan and implement innovative projects based on science. BEACON combines efficiencies and expertise to deliver the maximum benefit at the best cost. This regional cooperation between the eight member agencies has yielded grants and funding while increasing the visibility of BEACON.

**The BEACON coast belongs to us all!** The Beach is a huge economic driver from ports to tourism and creates \$17B alone in tourism revenue. BEACON is taking proactive steps to ensure the viability of our coastline and preparing our coastline for sea level rise, not just for humans, but for habitat and wildlife.



BEACON's greatest impact is regional planning and cooperation. With emphasis on sea level rise, state government wants to see regional cooperation, and BEACON is a unique program using regional cooperation to solve mutual problems on the BEACON coast. If not for BEACON, how do we solve the problem of losing 2/3 of our beaches by 2100?



# BEACON Projects

## GOLETA BEACH NOURISHMENT

- Goleta Beach has lost its sandy beach over the last 30 years
- One of the most visited beaches on the south coast, especially by underserved communities
- One of the most important beach access points in the region
- BEACON is supporting long-term solutions to solve the ongoing problem



## GOLETA KELP ANCHOR DEMONSTRATION

- California is losing its historic kelp forests
- Kelp is essential to aquatic species and is needed for healthy ocean ecology
- Redevelop our kelp resources through alternative



# BEACON Projects

## SANTA BARBARA MONITORING PILOT

- Coordinating with the City of Santa Barbara seeking funding for a pilot climate & sea level rise regional monitoring program
- Assisting the City in project management, stakeholder outreach, and technical & scientific review



## CARPINTERIA BEACH NOURISHMENT

- Carpinteria Beach is severely eroded
- Demonstrates regional beach erosion
- BEACON is embracing nature-based solutions and reestablishing the water sheds



# BEACON Projects

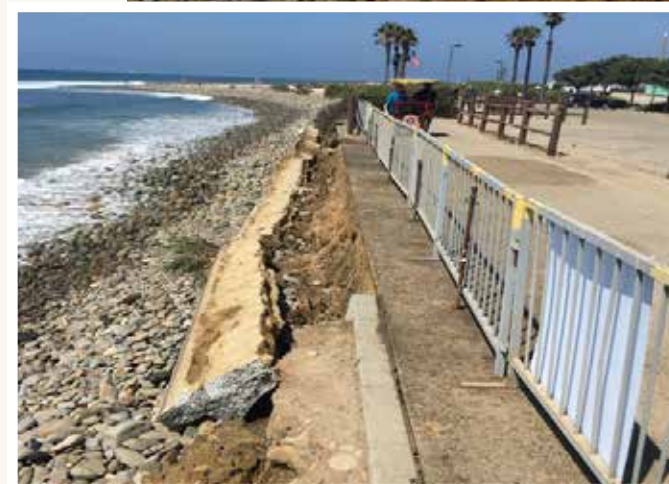
## MONDO'S COVE BEACH ACCESS STAIRWAY

- Limited public beach access
- Dangerous
- One of Ventura's most heavily-used beaches
- Timeline for completion is two years



## SURFER'S POINT

- Chronic coastal erosion
- Threatening public infrastructure
- Actively implementing alternative shoreline projects that are less costly with no negative impacts downcoast





# BEACON Projects

## HUENEME BEACH NOURISHMENT

- Beach starved of sand for the past 70 years
- Working with the City of Port Hueneme, Ventura County Channel Islands, and the USA Corps of Engineers to ensure sand is dredged every two years to restore the beach



## TSUMAS CREEK & ORMOND LAGOON

- Tsumas Creek & Ormond Lagoon filled to capacity with trash & debris
- BEACON working to help fund the install of trash booms in the Tsumas Creek above the Ormond Lagoon Waterway to collect trash
- Trash booms will help reduce polluted runoff and trash from entering into the Ormond Lagoon Waterway, and subsequently into the Pacific Ocean



# BEACON Strategic Plan FY 2021-2026

## STRATEGIC PLAN GOALS:



Promote beach preservation and the beneficial use of sediment



Expand use of Best Available Science in BEACON's Programs and Policies



Expand BEACON's regional sea level rise coordination and planning activities



Demonstrate effectiveness of innovative techniques to retain sand and sediment on beaches



Support expanded coastal and marine resources restoration



Maintain and enhance coastal water quality as part of beach restoration



Support regional coastal access and recreation



Improve long-term planning, governance, and finance

## ESTABLISHING THE SCIENCE ADVISORY COMMITTEE

Further integration of best available science into BEACON's activities and programs and the inclusion of science goals into BEACON strategic planning goals and objectives is needed.

## UPDATING COASTAL REGIONAL SEDIMENT MANAGEMENT PLAN

BEACON's current Coastal Regional Sediment Management Plan is outdated as it pertains to science, especially sea level rise and climate change. BEACON's Science Advisory Committee is actively working on compiling the best available data on sediment, shoreline erosion and threatened infrastructure, and developing specific strategies to best protect our coastline. The updated plan will provide new scientific data that is needed for the BEACON board members to make informed decisions and create policies that will create truly resilient and sustainable shorelines.





# Every Mountain Wants to Become a Beach

There are many man-made impediments (highways and other development) that have stopped the natural flow of sediment.

BEACON has several projects to address these impediments, including the Regional Sediment Management Plan.



*Impediments to Sediment*

# Board Members:

- **Chair, Gregg Hart**, Supervisor County of Santa Barbara
- **Vice Chair, Carmen Ramirez**, Supervisor County of Ventura
- **Das Williams**, Supervisor County of Santa Barbara
- **Matt LaVere**, Supervisor County of Ventura
- **Al Clark**, Councilmember City of Carpinteria
- **Kyle Richards**, Councilmember City of Goleta
- **Vianey Lopez**, Councilmember City of Oxnard
- **Steven Gama**, Councilmember City of Port Hueneme
- **Eric Freidman**, Councilmember City of Santa Barbara
- **Joe Schroeder**, Councilmember City of Ventura

# Contact Info

## Supervisor Gregg Hart

Chair, BEACON Board  
County of Santa Barbara  
Email: [ghart@countyofsb.org](mailto:ghart@countyofsb.org)

## Marc Beyeler

Executive Director, BEACON  
Email: [beyeler@beacon.ca.gov](mailto:beyeler@beacon.ca.gov)



[www.beacon.ca.gov](http://www.beacon.ca.gov)