



*Parking Plan for the Mission Canyon CEMA Storm Response Road Repair Project
Mission Creek/Tunnel Trail Road, Santa Barbara County, California*

Prepared by

Southern California Edison
2244 Walnut Grove Avenue
Rosemead, CA 92770

Jason Carson, Senior Supervisor

Road & Right-of-Way

Transmission Construction & Technical Support

Table of Contents

1. General.....	3
2. Parking and Construction Staging - Onsite	3
3. Parking - Offsite.....	3
4. Pedestrian Traffic	4
5. Signage	4
APPENDIX A: OVERFLOW CONTRACTOR PARKING PLAN	6
APPENDIX B: TRAFFIC CONTROL PLAN.....	7
APPENDIX C: ONSITE PARKING & CONSTRUCTION STAGING EXHIBIT.....	8

1. General

Construction activities for the Mission Canyon CEMA Storm Response Road Repair Project are expected to occur March through April 2023. This parking plan has been developed to reduce construction employee vehicle parking impacts related to the proposed construction.

Traffic controls for this project, including but not limited to vehicular, bike and pedestrian traffic controls; maintenance of vehicular, bike and pedestrian access; detours; and street closures shall be in accordance with County requirements. Nothing in this plan shall be construed as relieving the contractor from his or her responsibility to provide for the safety and convenience of traffic and the public during construction.

2. Parking and Construction Staging - Onsite

For vehicles that are required to be parked onsite, the contractor shall utilize the pre-defined areas in accordance with the staging exhibit found in Appendix C. Also in accordance with the Appendix C exhibit, Contractor shall confine construction equipment, temporary construction facilities, the storage of materials and equipment, and the operations of workers to the Site (the area shown in the exhibit), adjacent areas that Contractor has arranged to use through construction easements or otherwise, and other adjacent areas permitted by Laws and Regulations, and shall not unreasonably encumber the Site and such other adjacent areas with construction equipment or other materials or equipment. Total parking anticipated to be available onsite for use by the contractor is ninety-six (96) parking spots between staging areas thirteen (13) through fifty-two (52) during the full closure.

3. Parking - Offsite

- a. General - All personnel visiting and working at the site will be encouraged to use available onsite parking before utilizing the offsite parking locations. However, in the event that parking reaches capacity or onsite construction activities limit accessibility and safe usage of the available onsite parking, sixteen (16) available parking spaces within two locations along Tunnel Road will be reserved for temporary overflow, for construction/visiting personnel and can be referenced per Appendix A. Total Residential parking spots available will be one hundred ten (110).
- b. Contractor Parking - Contractor shall also ensure that access to all side streets and driveways are maintained at all times. Convenient and safe pedestrian access to occupied residential and business property shall be maintained at all times. Access to mailboxes must be maintained at all times such that the postal delivery service is not interrupted. Trash pick-up service shall not be interrupted. Access to vacant and unused property is prohibited. Signage described in Section 5 will be provided to delineate contractor parking spots from public and residential spots.

- c. Carpooling – An offsite parking lot has been identified for the contractors to maximize carpooling opportunities and minimize personal vehicles at or near the construction site. The contractor is strongly encouraged to utilize this, and similar lots as noted below and referenced in the Appendix A exhibit. If feasible, a shuttle may be provided by SCE to further encourage this effort.
 - a. Locations
 - i. 400W West Carrillo St, Santa Barbara, CA 93101 (Carrillo Castillo Commuter Lot)
 - ii. As needed – Contractor shall locate and provide documentation of authorization for any private property they have arranged to be utilized for offsite parking
- d. Resident and Visitor Parking – A significant portion of the public parking available on Tunnel Road is normally utilized by trail hikers. Because the trail will be closed during construction, the contractors will be allowed use of approximately (16) of the available street parking spots during the duration of construction thereby leaving the remaining one hundred (100) parking spaces for resident and visitor use. These spots have been separated to the maximum extent possible to limit the impact to local residents, as shown in Appendix A. The selection of contractor parking areas avoids mailboxes, driveways, hydrants, water meters, power poles or other property or facilities that may have routine use. Additional Construction parking has been identified withing the construction site along the Mission Canyon Catway (Or Tunnel Trail Road) and will likely reduce overall impact to Tunnel Road parking. However, phases of the construction work or jurisdictional requirement may limit the use of onsite construction parking during the course of the work thereby necessitating the use of the sixteen (16) allocated contractor parking spaces per Appendix A along Tunnel Road.

4. Pedestrian Traffic

- a. This project requires full closure of the Tunnel Road Trail seven days a week for the duration of the project. To enhance communication with the hiking public, signage and traffic controls will be posted both at the trailhead and at points down the hill, and modified, as needed, when determined by SCE during construction. This will help prevent potential hikers from parking and walking toward the trailhead in anticipation of a hike, helping to both enhance safety by keeping the public away from the worksite and reduce the disappointment of walking to a trailhead only to find that the trail is closed.

5. Signage

- a. Electronic Programmable Message Board Signs – Message boards shall be placed at each end of Tunnel Road and the trail entrance to warn all pedestrians and vehicular traffic of the trail closure to cause the least possible interference with potential hikers and residents. These signs shall be placed five (5) working days ahead of the trail closure and the beginning of construction activities.
- b. Traffic Control Monitors – During construction work hours, Traffic Control Monitors will be stationed at the Trail Entrance and at the “Y” to notify pedestrians and other potential hikers of the trail closure.
- c. Contractor Parking along Tunnel Road – Laminated signs will be posted for designated contractor parking areas and will be labeled as “Temporary Construction Parking.”

APPENDICES

APPENDIX A:

OVERFLOW CONTRACTOR PARKING PLAN

Overflow Contractor Parking Plan

Tunnel Road, from Mission Canyon Road to Inspiration Point Trailhead

Total Overflow Contractor Parking: 16 spaces
Total Resident/Visitor Parking: 100 spaces

Legend

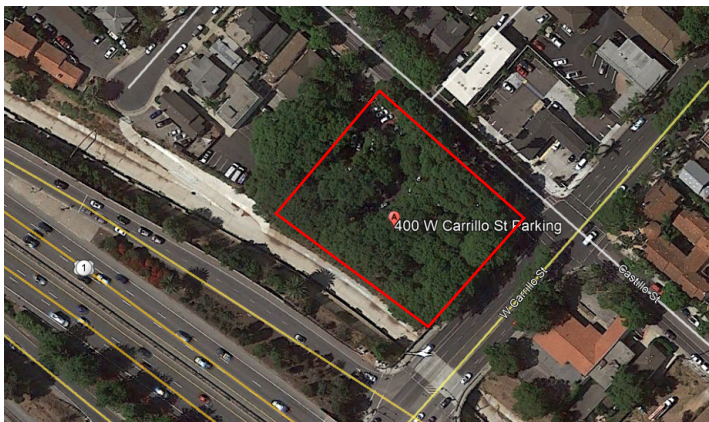
- ▲ Fire Hydrant
- ★ Inspiration Point Trailhead
- Overflow Contractor Parking
- Resident/Visitor Parking
- Utility Pole

Overflow Contractor Parking: 9 spaces

Overflow Contractor Parking: 7 spaces

Offsite Contractor Parking:

400 W Carrillo St, Santa Barbara, CA 93101

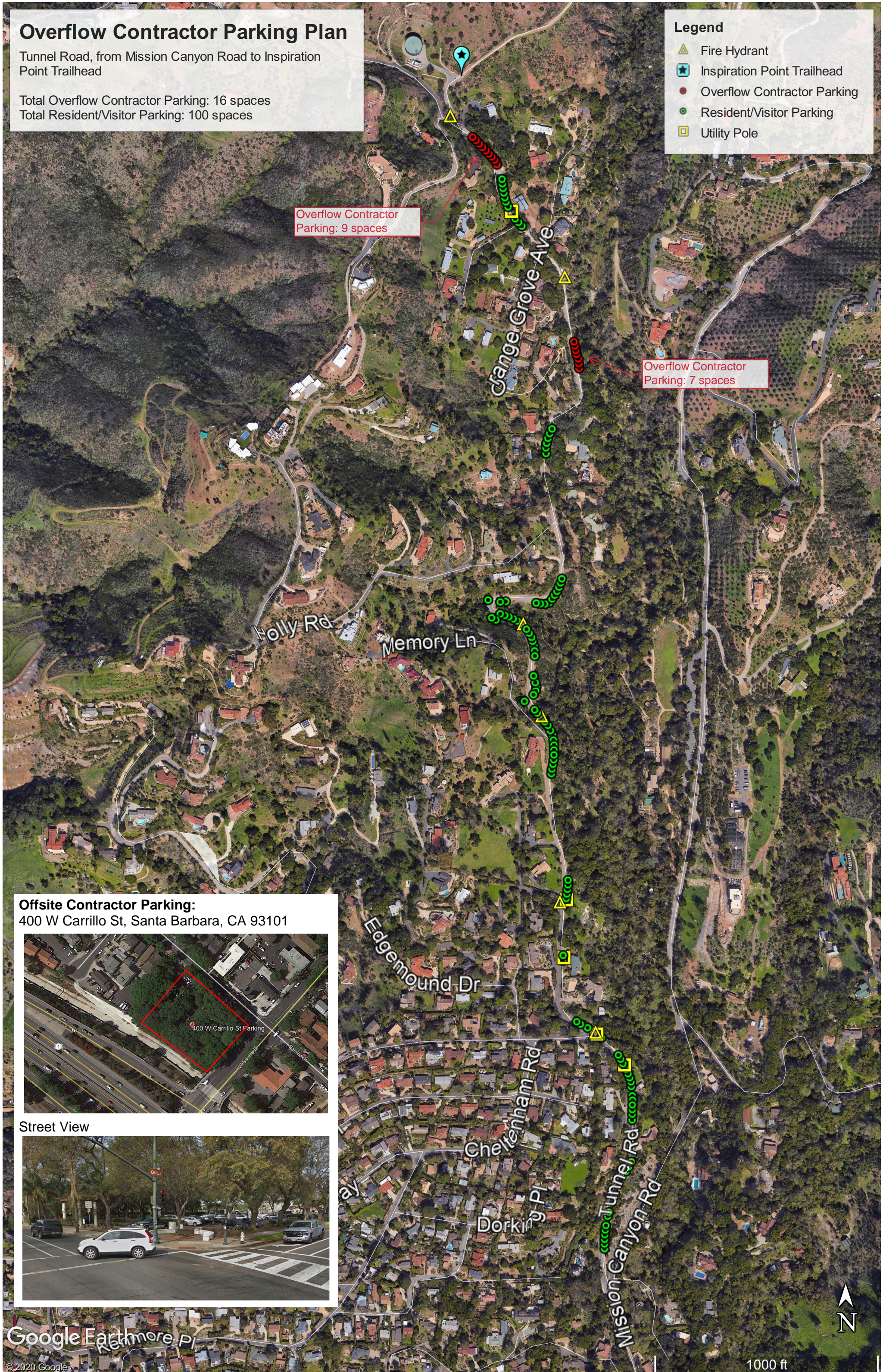


Street View



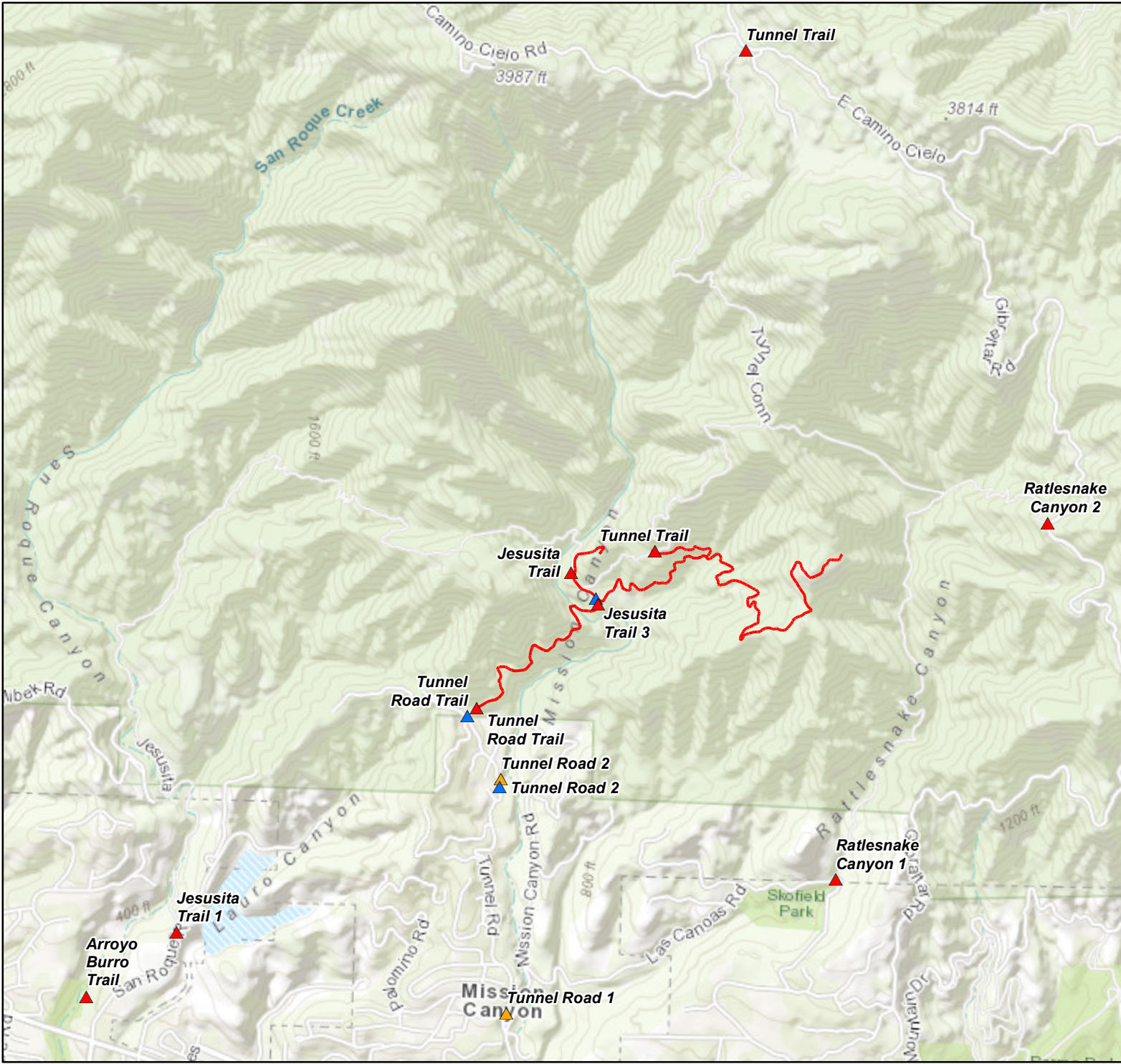
Google Earth

© 2020 Google







APPENDIX B: Traffic Control PLAN

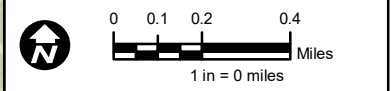
Path: P:\PROJECTS\Special Projects\MissionCreek_Goleta_SantaBarbara\Working\Trail_Signage_MC_20230302.mxd



Trail Signage Locations

Mission Creek

-  Closure Notice
-  Message Board
-  TC Location
-  MC Project



Date: 3/3/2023
File Name: Trail_Signage_MC_20230302.mxd
Version #: 4
Created By: Chris Diaz
Geospatial Analysis,
Geomatics | Central Field Services

Features depicted herein are planning level accuracy, and intended for informational purposes only. Distances and locations may be distorted at this scale. Always consult with the proper legal documents or agencies regarding such features. Central Field Services

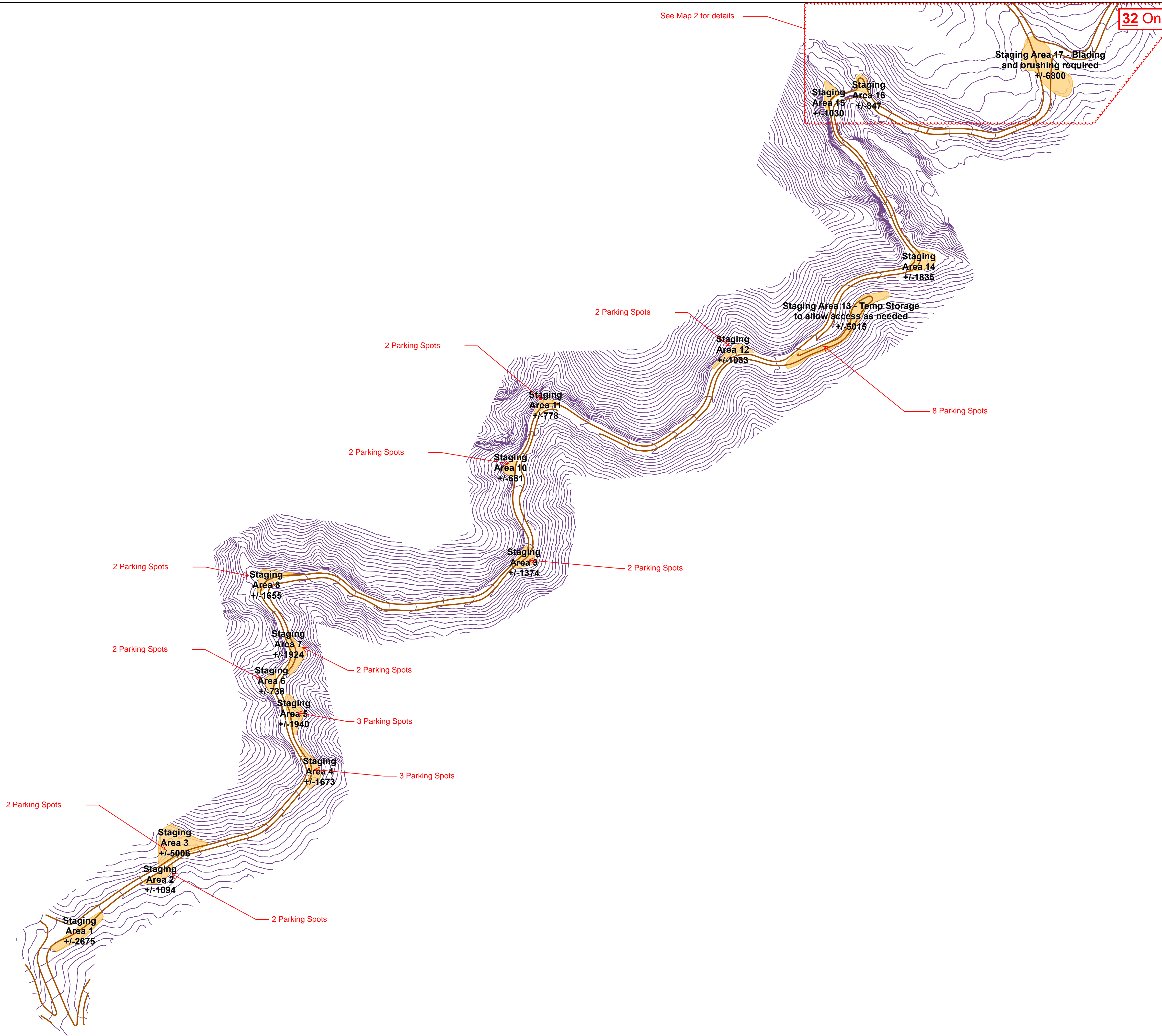
Service Layer Credits: Sources: Esri, HERE, Garmin, Intermap, increment P Corp., GEBCO, USGS, FAO, NPS, NRCAN, GeoBase, IGN, Kadaster NL, Ordnance Survey, Esri Japan, METI, Esri China (Hong Kong), (c) OpenStreetMap contributors, and the GIS User Community

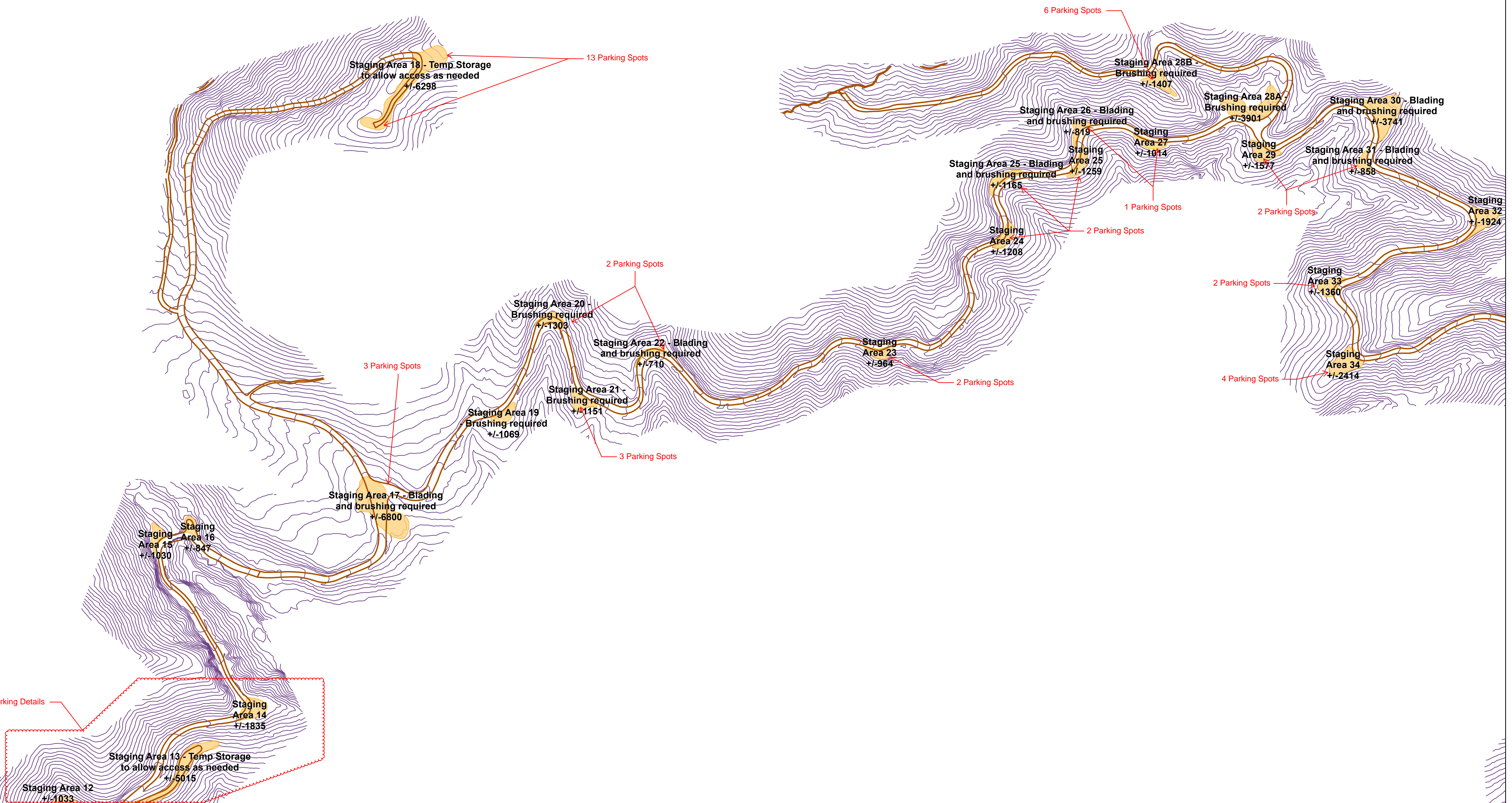


APPENDIX C: ONSITE PARKING & CONSTRUCTION STAGING EXHIBIT

See Map 2 for details

32 On-site Parking Spots for Staging Areas 1-14





See Map 1 for Parking Details

