

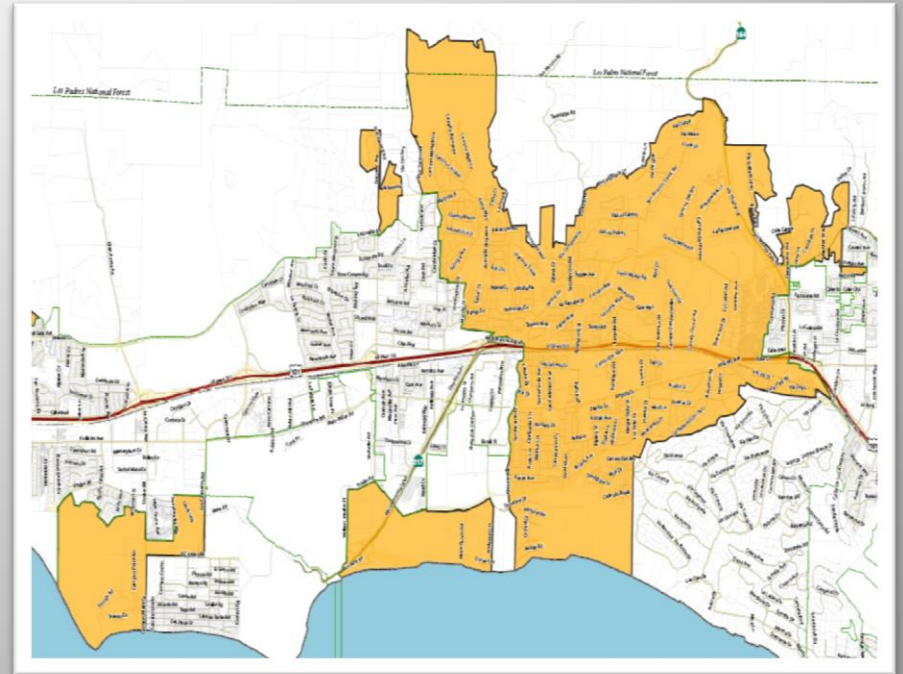
CSA 3, CSA 31 and NCLD Benefit Assessment and Services Presentation

Fiscal Year 2013-2014

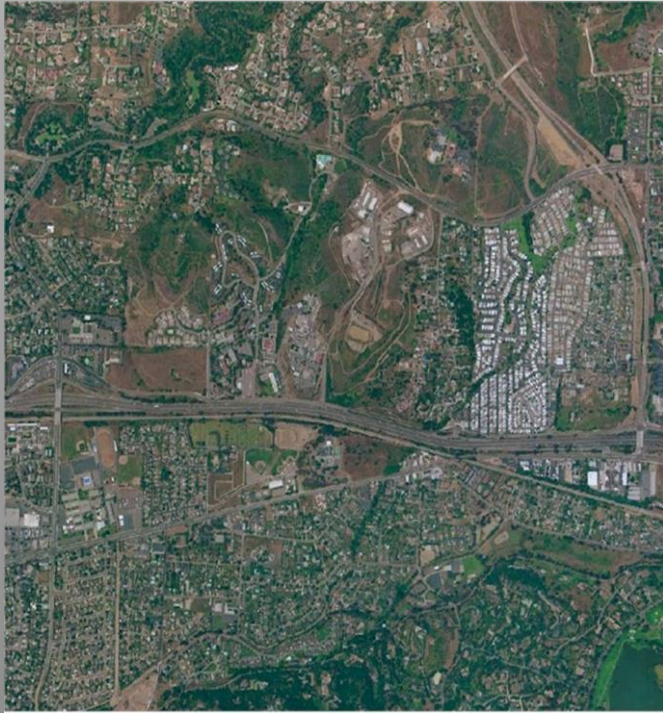


Goleta Valley CSA 3

- Created in 1963
- Street lighting for unincorporated Goleta and Santa Barbara
- Also funds open space and park maintenance
- A Benefit Assessment is collected to fund Operations and Maintenance of Street Lights
- Library Benefit Assessment which is a separate Board action



Goleta Valley CSA 3



- The proposed Benefit Assessment is \$24 per residence per year
- Restored in FY 12-13
 - Median Landscaping Improvements
 - Additional street tree trimming around street lights
 - Purchase of equipment for Parks Activities

Goleta Valley CSA 3 – FY 13/14

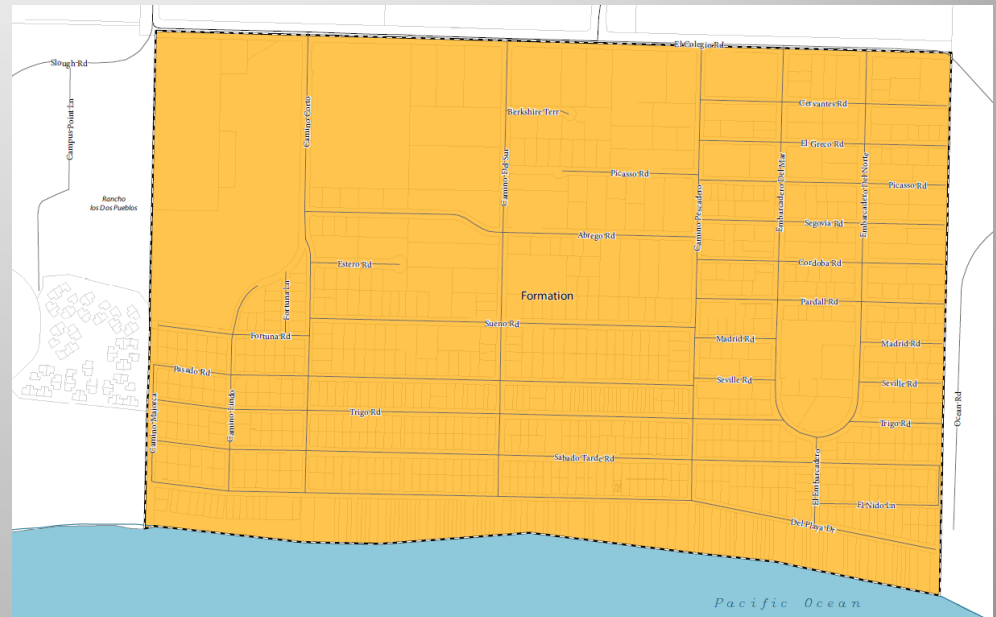
Fund Status

- The proposed Benefit Assessment is unchanged from last year with a base rate of \$24 per year
- Fund Balance: \$255,866



Isla Vista CSA 31

- Created in 1963
- Street lighting for Isla Vista
- Also funds streetscape and landscape installation and maintenance
- A Benefit Assessment is collected to fund Operations and Maintenance of Street Lights



Isla Vista CSA 31 – FY 12/13 Highlights



- Street lighting benefit assessment is \$12.93 per residence per year
- IVRDA dissolution resulted in additional property taxes revenues to CSA 31
- CDBG \$100,000 Grant to retrofit Street lighting

Isla Vista CSA 31 – FY 13/14

Fund Status

- The proposed Benefit Assessment is unchanged from last year with a base rate of \$12.93 per year
- Fund Balance: \$183,946



North County Lighting District

- Created in 1994
- Provide streetlighting in the communities of Orcutt, Los Alamos, Casmalia and the unincorporated areas of Lompoc and Santa Maria
- Funds streetlighting only
- In the unincorporated Santa Maria area (CSA 5) a benefit assessment rate up to \$15.00 can be considered



NCLD – FY 13/14

Fund Status

- The proposed Benefit Assessment is to remain at zero.
- Fund Balance: \$322,908



Recommendations



- Adopt resolution s establishing benefit assessment charges for CSA 3 and CSA 31 for FY 13-14
- Do not establish benefit assessments for NCLD
- Thank You