

Santa Barbara County

October 8, 2013



**SB1022 Jail Construction
Funding Opportunity**

SB1022 Facts

- **Provides up to \$500 million in state lease-revenue bond financing**
- **Custodial housing, reentry, program or treatment space**
- **A total of \$160 million available for medium sized counties. Awards of up to \$40 million to each successful county**
- **Awards may be used to replace existing compacted, outdated or unsafe housing capacity**
- **Counties must provide a minimum 10% match (cash and/or in-kind)**

SB1022 Facts

Preference points will be awarded to those counties that are clearly ready to proceed

- **Commitment of adequate county contribution funding – Mandatory requirement**
- **Initial real estate due diligence**
- **Compliance with CEQA**
- **Authorization to execute project documents**

Why do we need SB1022?

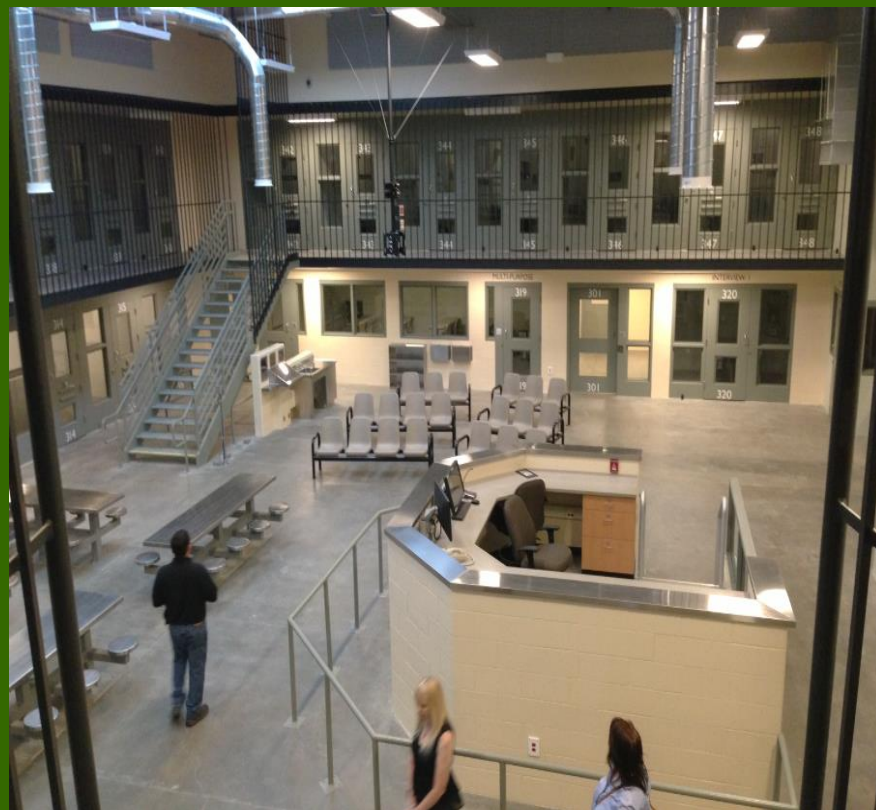
- **Approved AB900 construction now insufficient for expanding jail population**
- **Since the implementation of AB109, the jail's population increased by 11% in 2012**
- **On August 20, 2013 a snapshot of the Santa Barbara County Jail facilities revealed 53% of the sentenced inmate population were AB109 inmates**
- **55% of the AB109 inmates had sentences in excess of one year**

Why do we need SB1022?

- Existing programming space in the Main Jail is inadequate for new long term population
- Additional housing units will provide the programming space needed to address these inadequacies
- Improve safety and operational efficiency

Existing Base and Station New Style Housing





Sheriff's Transition And Reentry (S.T.A.R.) Complex

- **SB1022 Complex will be a 52,208 sq. ft. facility adding 228 rated beds to the Northern Branch Jail**
- **Programming focused on rehabilitation, including achievement of sobriety and successful reentry into the community**
- **S.T.A.R Facility will include:**
 - **Expanded Sheriff's Treatment Program**
 - **Step-down housing units**
 - **Specially designed transition housing units**
 - **Relocation of Alternative Sentencing Bureau**

Construction Costs

	State Cost	County Cost	Total Cost
State SB1022 funds	\$38,976,000		
County Cash Match		\$ 2,210,000	
County In-Kind Match		\$ 2,156,100	
County In-Kind Overmatch		<u>\$ 92,900</u>	
Sub-Total of Eligible Costs	\$38,976,000	\$ 4,459,000	
County Ineligible Costs	<u></u>	<u>\$ 226,100</u>	
Total Project Costs	\$38,976,000	\$ 4,685,100	\$43,661,100
Total County Cost		\$ 4,685,100	
Less Land Cost		<u>(\$ 785,000)</u>	
Total Funds to be set aside		\$ 3,900,100	

Operating Costs

Staffing Estimate – 228 bed facility	\$2,950,900
Services and Supplies & other charges	<u>\$1,848,300</u>
Sub-total	<u>\$4,799,200</u>
Less: Existing Staff Transferred	(\$2,269,900)
Less: Services & Supplies transferred/saved	(\$1,276,900)
Plus: General Services Staff & materials	<u>\$ 159,000</u>
Net Additional Operating Costs FY 2018/19	\$1,411,400
Savings from AB900 Cost Update:	<u>(\$1,100,700)</u>
Net Increase in Annual Operating Cost:	\$ 310,700

Why Act on this Opportunity?

- Obtain additional beds needed due to AB109
- Close antiquated and inefficient housing units in Main Jail and Medium Security Facility
- Increase safety and improve working and housing conditions for staff and inmates
- Increase public safety by delivering programs that improve inmate reentry into the community and reduce recidivism
- Adds jobs and revenue to local economy
- State pays for 90% of construction costs

Recommended Action

- **Approve Recommendations A-H authorizing the Sheriff to submit an application for SB1022 on or before October 24, 2013**

Questions?