

# Ellwood Mesa Coastal Trail and Habitat Restoration Project

CREF Grant Proposal



SANTA BARBARA COUNTY  
Trails Council





SANTA BARBARA COUNTY  
**Trails Council**



# Who Uses Ellwood Mesa

As the largest publically owned coastal open space on the South Coast of Santa Barbara County, the Ellwood Mesa Trail system serves residents from throughout the South Coast and County, as well as visitors to our community.



SANTA BARBARA COUNTY  
**Trails Council**







SANTA BARBARA COUNTY  
**Trails Council**





# Enhancing the Environment



Public Access to the Coast  
Safe Beach Access  
Reducing Erosion  
Habitat Restoration



SANTA BARBARA COUNTY  
**Trails Council**





Existing



Proposed



SANTA BARBARA COUNTY  
**Trails Council**







SANTA BARBARA COUNTY  
**Trails Council**



# Use Of Funds

- Engineering details for 2 coastal access points and trail slope details
- Wetland delineation study
- Finalize environmental review document



SANTA BARBARA COUNTY  
**Trails Council**





# Matching Funds

CREF Grant Request:	\$35,000
UCSB Coastal Fund	\$9,200
Goleta Valley Land Trust	\$50,000
California Coastal Conservancy	\$100,000



SANTA BARBARA COUNTY  
**Trails Council**



# Oil Impact Mitigation



*One of the beach access points on Ellwood Mesa was created through grading down of the bluff face to extinguish a **fumorable** (a subsurface fire) that developed in an oil well drilled on the bluff face.*



SANTA BARBARA COUNTY  
**Trails Council**





# Oil Impact Mitigation



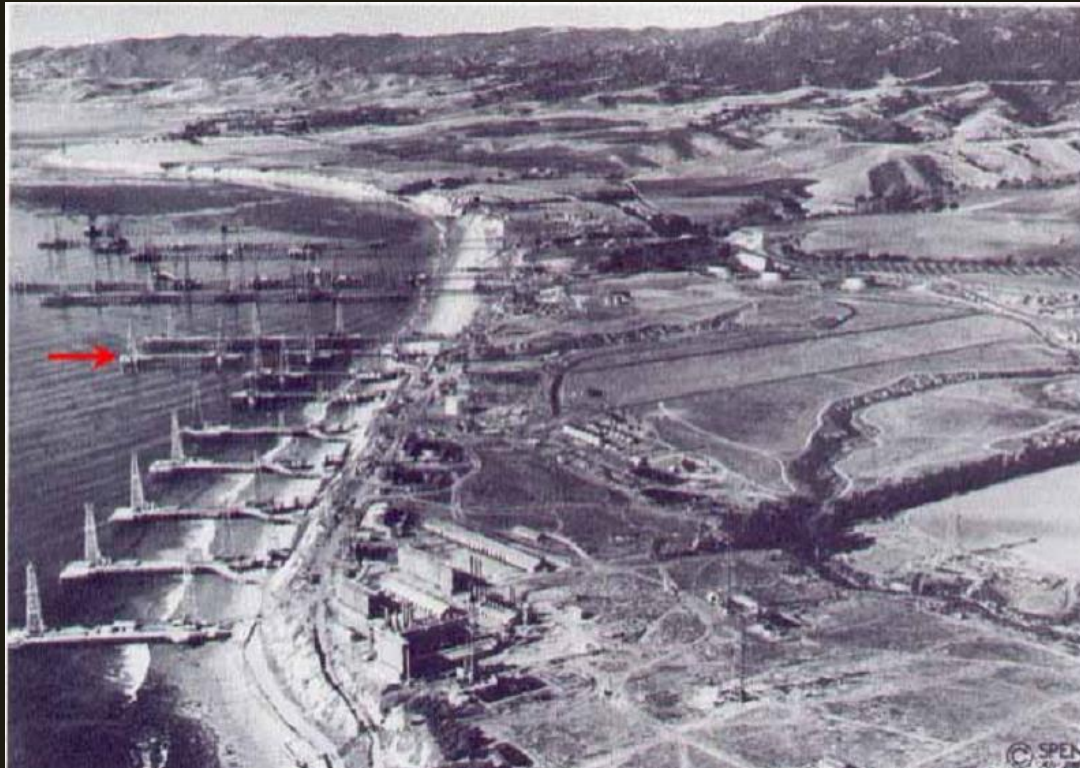
*Oil production is proposed to resume and extend over 20 years at this **surf zone oil well** just west of Ellwood Mesa as part the PRC 421 Recommissioning Project. The Environmental Impact Report identifies significant impacts to area recreation and sensitive habitats.*



SANTA BARBARA COUNTY  
**Trails Council**



# Oil Impact Mitigation



SANTA BARBARA COUNTY  
**Trails Council**





# Consistency with CREF Criteria

Clearly the Ellwood Mesa has experienced substantial impacts from past, ongoing and planned oil development.



SANTA BARBARA COUNTY  
**Trails Council**



# A Better Place to Live

The CREF grant will help advance this important coastal access and habitat restoration project to construction, with associated benefits to public access and the environment.



SANTA BARBARA COUNTY  
**Trails Council**





# Thank You



SANTA BARBARA COUNTY  
**Trails Council**

