

A photograph of a construction site featuring several large cranes and vertical steel beams. The scene is set against a clear sky. The text is overlaid on the top half of the image.

# **Santa Barbara County Flood Control District**

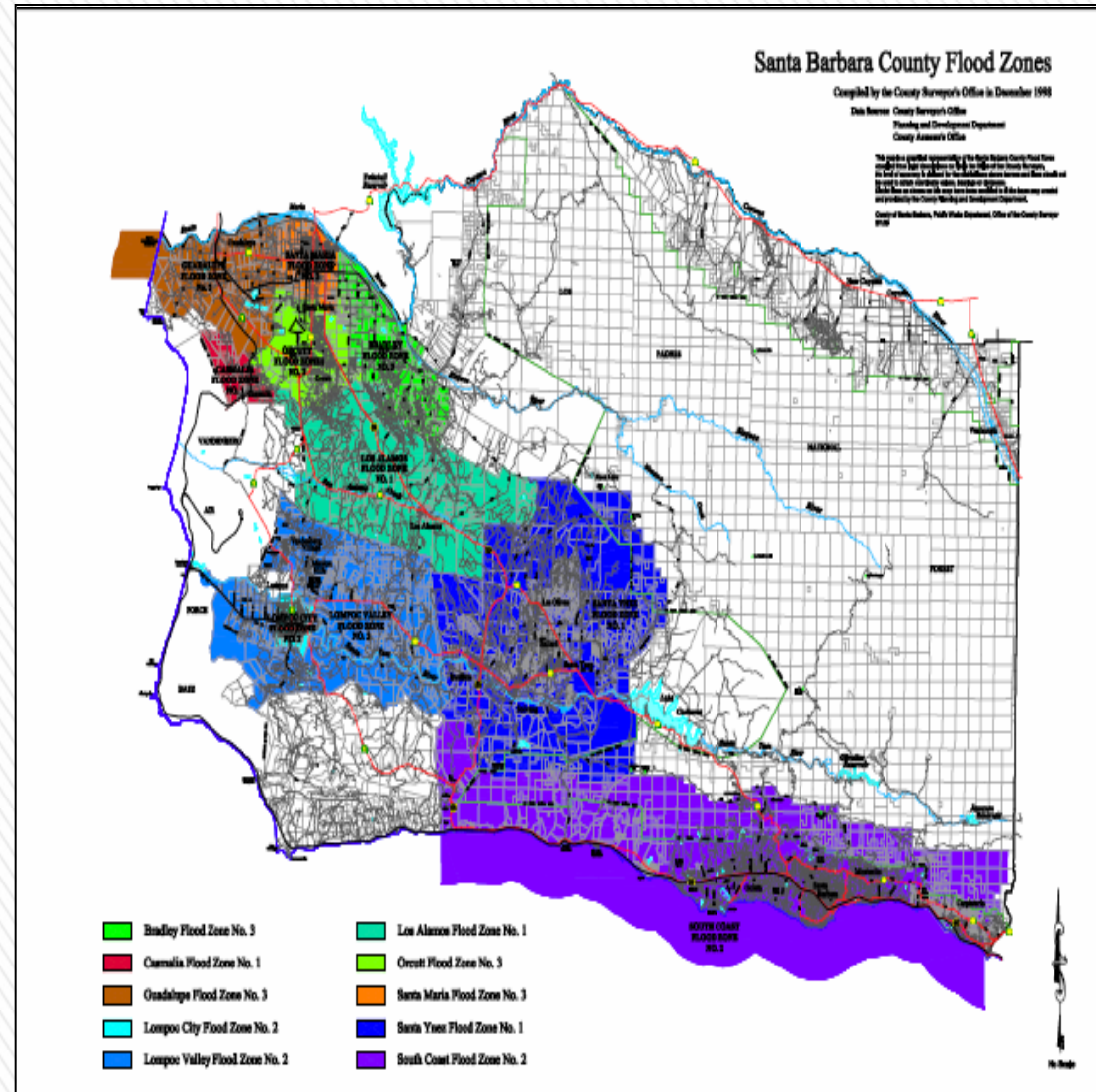
**Benefit Assessment Update  
Board of Supervisors Meeting**

**June 17, 2014**

**NOV 15 2013**

# Flood Control Benefit Assessments

- » Voter Approved Assessments
- » Assessment Approved with an Annual CPI Adjustment to Preserve Funding Levels
- » Proposed Increase 1.04% for FY 2014-15





# Proposed Benefit Assessment Rate

## FY 2014-15

	Group A		Group B		Group C		Group D		Group E	
	FY 2014-2015		FY 2014-2015		FY 2014-2015		FY 2014-2015		FY 2014-2015	
					\$/Ac <sup>1</sup>					
	\$/Ac	Min \$ Assmt	\$/Ac	Min \$ Assmt	(over 0.3 Ac only)	Min \$ Assmt	\$/Ac	Min \$ Assmt	\$/Ac	Min \$ Assmt
Bradley #3	\$40.74	\$12.23	\$30.55	\$9.17	\$0.00	\$6.15	\$1.52	\$0.45	\$0.15	\$0.04
Guadalupe #3	\$21.57	\$6.46	\$16.18	\$4.87	\$0.00	\$3.25	\$0.81	\$0.25	\$0.08	\$0.02
Lompoc City #2	\$91.00	\$27.30	\$68.24	\$20.46	\$0.00	\$13.66	\$3.42	\$1.02	\$0.32	\$0.09
Lompoc Valley #2	\$35.54	\$10.65	\$26.64	\$7.99	\$0.00	\$5.31	\$1.33	\$0.40	\$0.14	\$0.03
Los Alamos #1	\$45.19	\$13.56	\$33.90	\$10.16	\$0.00	\$6.78	\$1.69	\$0.50	\$0.17	\$0.04
Orcutt #3	\$27.08	\$8.13	\$20.31	\$6.10	\$0.00	\$4.07	\$1.01	\$0.30	\$0.10	\$0.03
Santa Maria #3	\$86.64	\$26.00	\$64.99	\$19.55	\$0.00	\$12.99	\$3.26	\$0.98	\$0.30	\$0.09
SMR Levee	\$23.38	\$7.02	\$17.53	\$5.26	\$0.00	\$3.52	\$0.87	\$0.27	\$0.09	\$0.02
Santa Ynez #1	\$19.96	\$5.99	\$14.97	\$4.49	\$0.00	\$2.99	\$0.74	\$0.23	\$0.08	\$0.02
South Coast #2	\$152.08	\$45.63	\$114.06	\$34.22	\$0.00	\$22.81	\$5.70	\$1.71	\$0.56	\$0.17



# Recommendations



- Approval of Items A, B, and C
  - First Reading

- Return July 1, 2014 for Second Reading and Final Adoption (Admin Agenda)

