

## **ATTACHMENT 4**

### **ZONING MAP AMENDMENT**

#### **LAND USE AND DEVELOPMENT CODE ZONING MAP AMENDMENT**

ORDINANCE NO. \_\_\_\_\_

AN ORDINANCE TO AMEND ASSESSOR PARCEL NUMBER 153-080-008

Case No. 14RZN-00000-00004

The Board of Supervisors of the County of Santa Barbara ordains as follows:

#### **SECTION 1:**

All zoning maps and zoning designations previously adopted under the provisions of Sections 35.14.020 and 35.104 “Adoption of New Zoning Maps,” of Chapter 35, Zoning, of the Code of the County of Santa Barbara, California, are hereby repealed as they relate to Assessor’s Parcel Number 153-080-008 shown on the map attached hereto as Exhibit A and incorporated by reference.

#### **SECTION 2:**

Pursuant to the provisions of Section 35.14.020, “Adopting New Zoning Ordinances and Maps,” of the Land Use and Development Code, of Chapter 35 of the Code of the County of Santa Barbara, California, the Board of Supervisors hereby adopts by reference the Zoning Map identified as Board of Supervisors Exhibit A, dated February 17, 2015, which rezones Assessor’s Parcel Number 153-080-008 from 40-AL-O, Limited Agriculture, 40 acre minimum parcel size, to AG-II-100, Agriculture, 100 acre minimum parcel size, and which is made a part of said section by reference, with the same force and effect as if the boundaries, locations, and lines of the districts and territory therein delineated and all notations, references, and other information shown on said Zoning Map were specifically and fully set out and described therein, as exhibited in Exhibit A, and which is made part of said section by reference, with the same force and effect as if the boundaries, locations, and lines of the districts and territory therein delineated and all notations, references, and other information shown on said Zoning Map were specifically and fully set out and described therein.

#### **SECTION 3:**

The Chair of the Board of Supervisors is hereby authorized and directed to endorse said Exhibit A to show that said map has been adopted by this Board.

#### **SECTION 4:**

Except as amended by this Ordinance, Section 35.14.020 of the Land Use and Development Code of Santa Barbara County, California, shall remain unchanged and shall continue in full force and effect.

SECTION 5:

This ordinance shall take effect and be in force thirty (30) days from the date of its passage; and before the expiration of fifteen (15) days after its passage it, or a summary of it, shall be published once, with the names of the members of the Board of Supervisors voting for and against the same in the Santa Barbara NewsPress, a newspaper of general circulation published in the County of Santa Barbara.

PASSED, APPROVED AND ADOPTED by the Board of Supervisors of the County of Santa Barbara, State of California, this \_\_\_\_\_ day of \_\_\_\_\_, 2015, by the following vote:

AYES:

NOES:

ABSTAINED:

ABSENT:

\_\_\_\_\_  
JANET WOLF, CHAIR  
Board of Supervisors  
County of Santa Barbara

ATTEST:

MONA MIYASATO  
Clerk of the Board of Supervisors

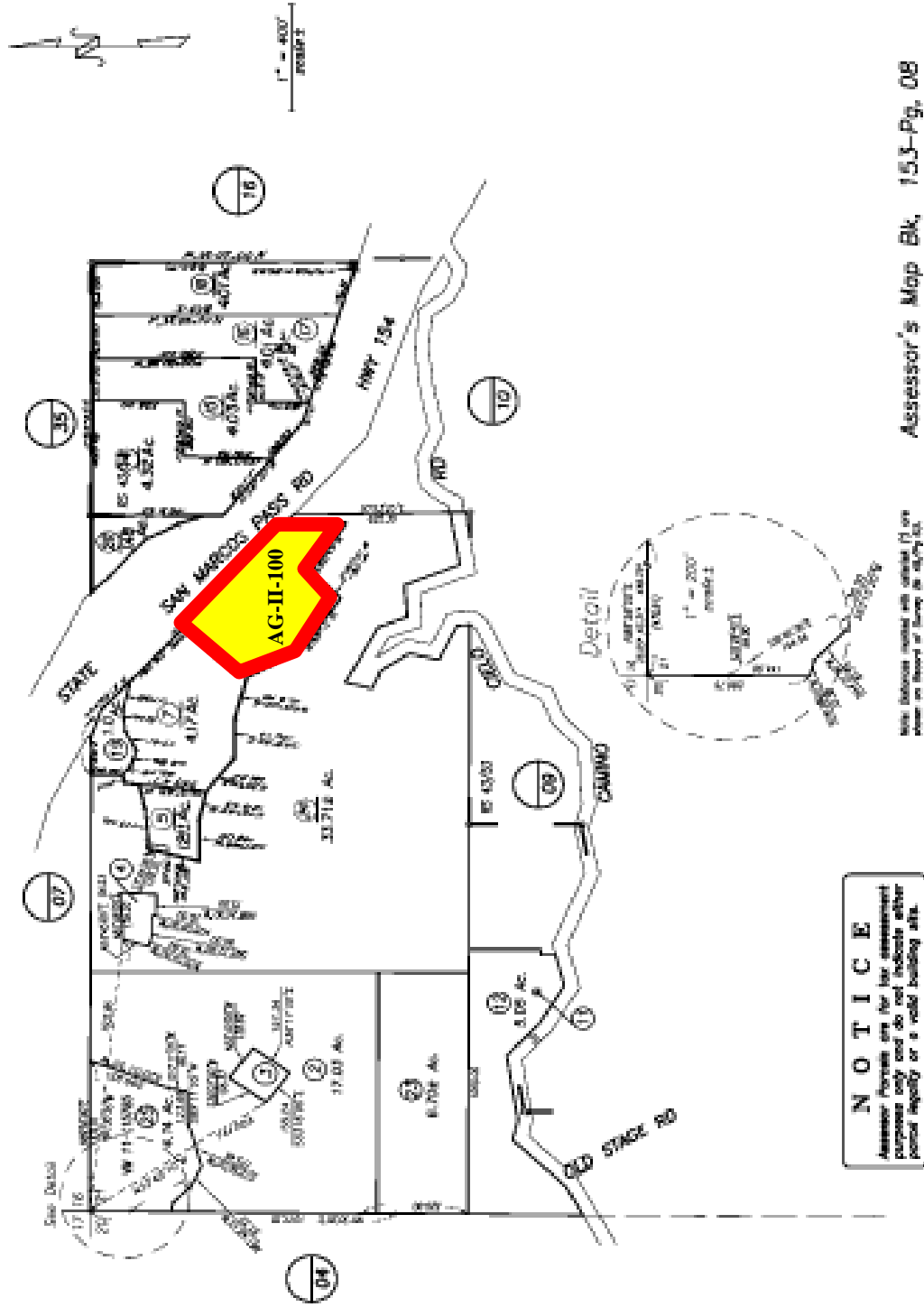
By \_\_\_\_\_  
Deputy Clerk

APPROVED AS TO FORM:

MICHAEL C. GHIZZONI  
County Counsel

By \_\_\_\_\_  
Deputy County Counsel

EXHIBIT A



Assessor's Map Bk. 153-Pg. 08  
County of Santa Barbara, Calif.

10/21/1950 R.S. Bk. 43 , Pg. 53 , Tract "George Honey Tract"

15072