



**Surfrider Foundation**

CONSERVATION - ACTIVISM - RESEARCH - EDUCATION

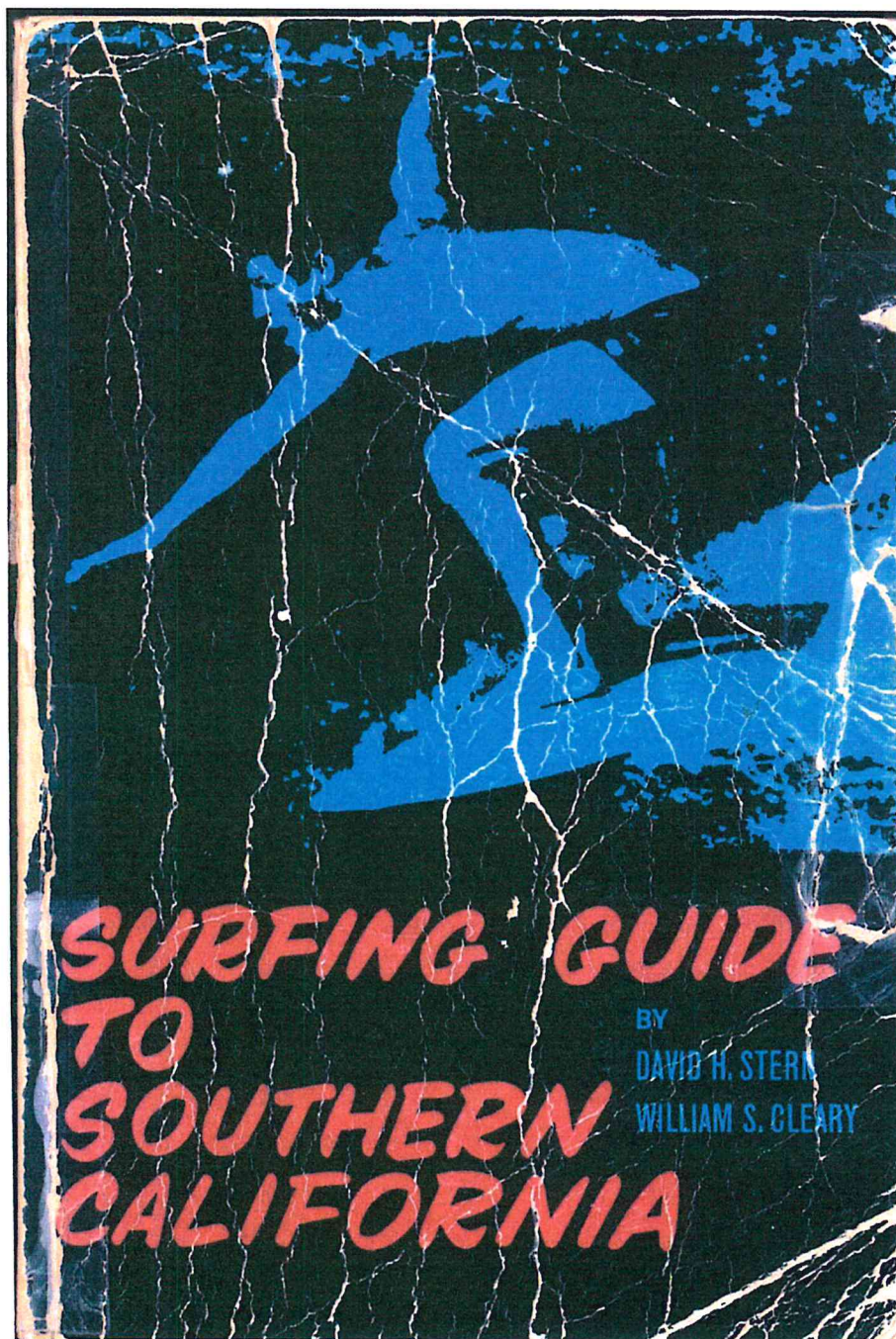
**Bob Keats**

Vice-Chair Santa Barbara Chapter

630 Miramonte Dr. Santa Barbara, CA. 93109

(805) 962-4340 E-MAIL; [bobswave@earthlink.net](mailto:bobswave@earthlink.net)

# Las Varas Ranch: Access to Edwards Point Surf Spot



THE INTERNATIONAL SURFING GUIDEBOOK SERIES

Editor: David H. Stern

VOLUME I: Surfing Guide to Southern California

CREDITS

Aerial Photos.....Eduardo and Lola Ricci  
Maps.....Colin Cantwell  
Cover Photo of Bill Cleary.....Jacobus "Co"  
Rentmeester  
Cover Design.....Wes Herschensohn  
Surfing Photos.....Credited in text

Printed in the United States

by

Thomas Litho

Copyright 1963, by The Fitzpatrick Company, Malibu, California

Library of Congress Catalog Card No. 63-17835

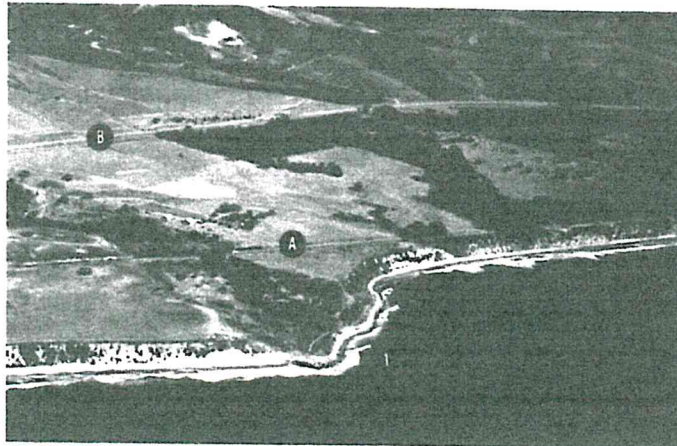
## GOLETA AREA



Richard Roche cuts back into a clean green wall at EL CAPITAN point.  
(Alexander "Skipper" Newton)

**CAT CANYON (EDWARDS RANCH)**—Right-slide point takes west swell. Rocks protrude above water level in middle of break when surf is 3 feet; at this size short slow rides are available inside. Larger surf may be faster and rides quite long. Point is located 2 miles east of El Capitan in front of private land marked with anti-trespassing signs.

(1) Cat Canyon. On land: (A) Railroad track. (B) Highway 101.





**CAT CANYON (EDWARDS RANCH)**—Right-slide point takes west swell. Rocks protrude above water level in middle of break when surf is 3 feet; at this size short slow rides are available inside. Larger surf may be faster and rides quite long. Point is located 2 miles east of El Capitan in front of private land marked with anti-trespassing signs.

(1) Cat Canyon. On land: (A) Railroad track. (B) Highway 101.

