

# SAFE DRUG DISPOSAL

SUPERVISOR DOREEN FARR

Recommended Action:

- 1) Receive and File
- 2) Direct staff to conduct stakeholder outreach & return w/ recommendation for establishment of reliable drug take back program
- 3) Exempt from CEQA

# TRENDS

- In '14 Americans filled **4 Billion** drug prescriptions
- Avg. American uses **12** prescriptions per year
- But **2 of 3** prescriptions are reportedly unused



Accumulation  
of leftover pills  
increases  
opportunity for  
abuse and  
misuse



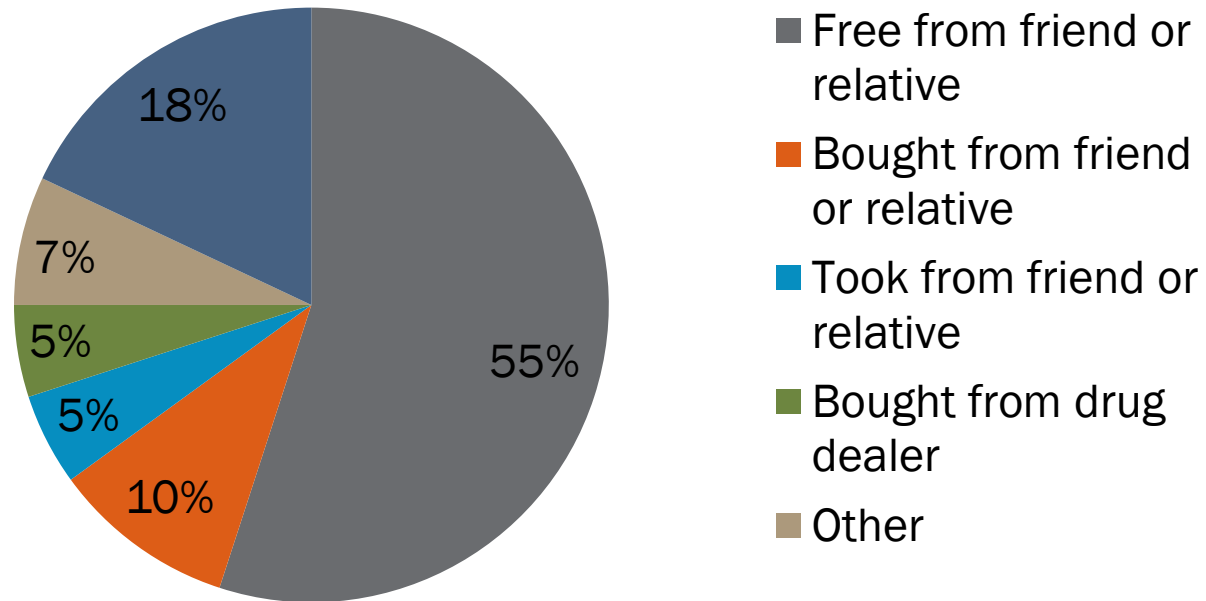
The  
average  
senior is  
prescribed  
27 new  
drugs per  
year



# SANTA BARBARA COUNTY

Prescription  
drug abuse  
increased over  
100% from  
2008-2010

## Source of Pain Relievers for Non-Medical Use



70% obtained from friend or relative

SOURCE: SAMHSA 2009 NATIONAL SURVEY ON DRUG USE & HEALTH

**COTTAGE HOSPITAL  
EMERGENCY DEPARTMENT**

Average of  
**320 visits**  
annually for  
prescription drug  
poisoning & overdose

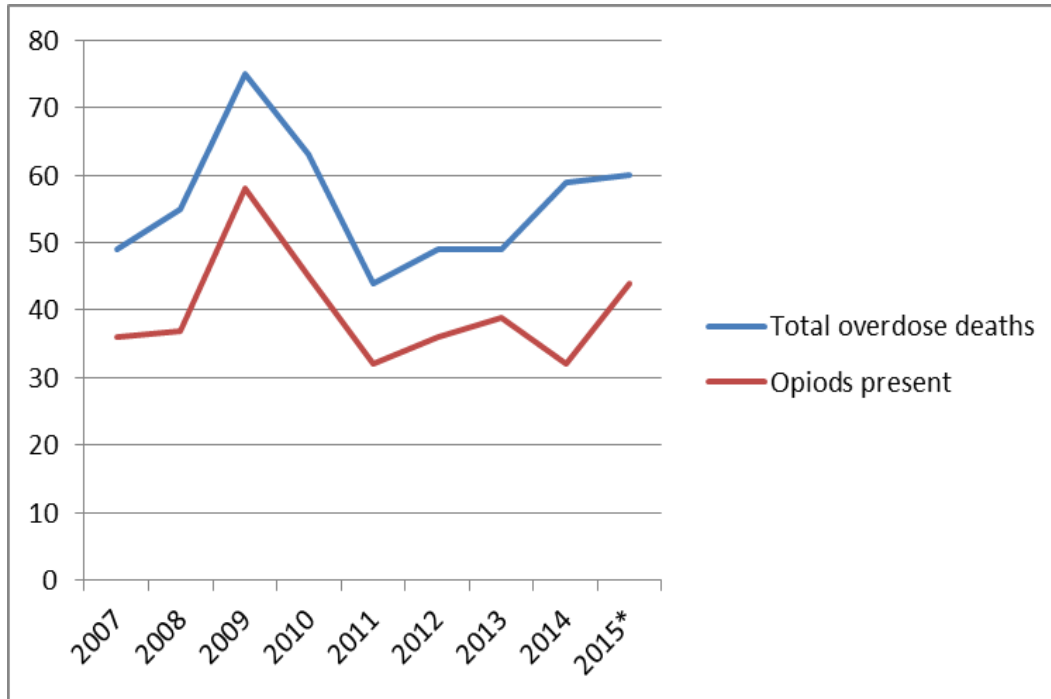
# PRESCRIPTION DRUG ABUSE IMPACT SB COUNTY DEPARTMENTS

319  
paramedic  
overdose  
calls since  
June 2014





# Santa Barbara County Coroners Office



59  
overdose  
deaths  
from drug  
use in  
2014

# Improper home disposal contaminates water supply



# ENVIRONMENTAL PROTECTION AGENCY STUDY

Half of water  
samples coming  
out of wastewater  
treatment plants  
contained at least  
25 drugs

# PERMANENT, ACCESSIBLE DRUG COLLECTION PROGRAMS PROTECTS

- ✓ Our families
- ✓ Water supply
- ✓ The environment



# DEFINITIONS



## Controlled Substances

Regulated by the DEA

Illicit drug

Addictive medication

Only law enforcement  
can collect

## Non-Controlled Substances

Not regulated by DEA

Over-the-counter  
designed to treat  
medical condition



## OPERATION MEDICINE CABINET (OMC)



Program for residents  
to safely dispose of  
their unused  
household  
medications

Residents can deposit:

- ✓ Over-the-counter
- ✓ Prescription medication
- ✓ Samples
- ✓ Pet Medication

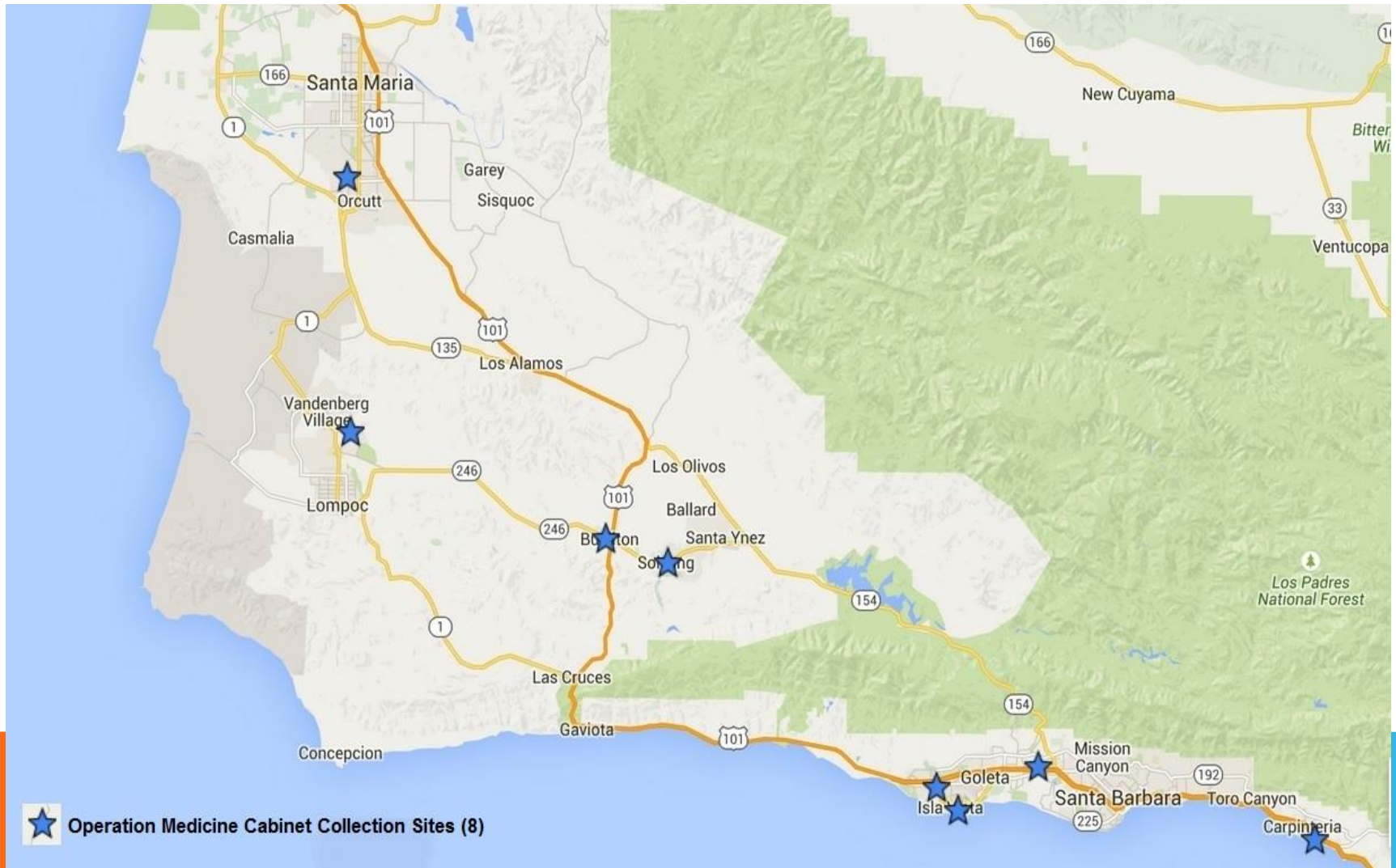
# OMC COLLECTED 32,400 LBS SINCE 2010



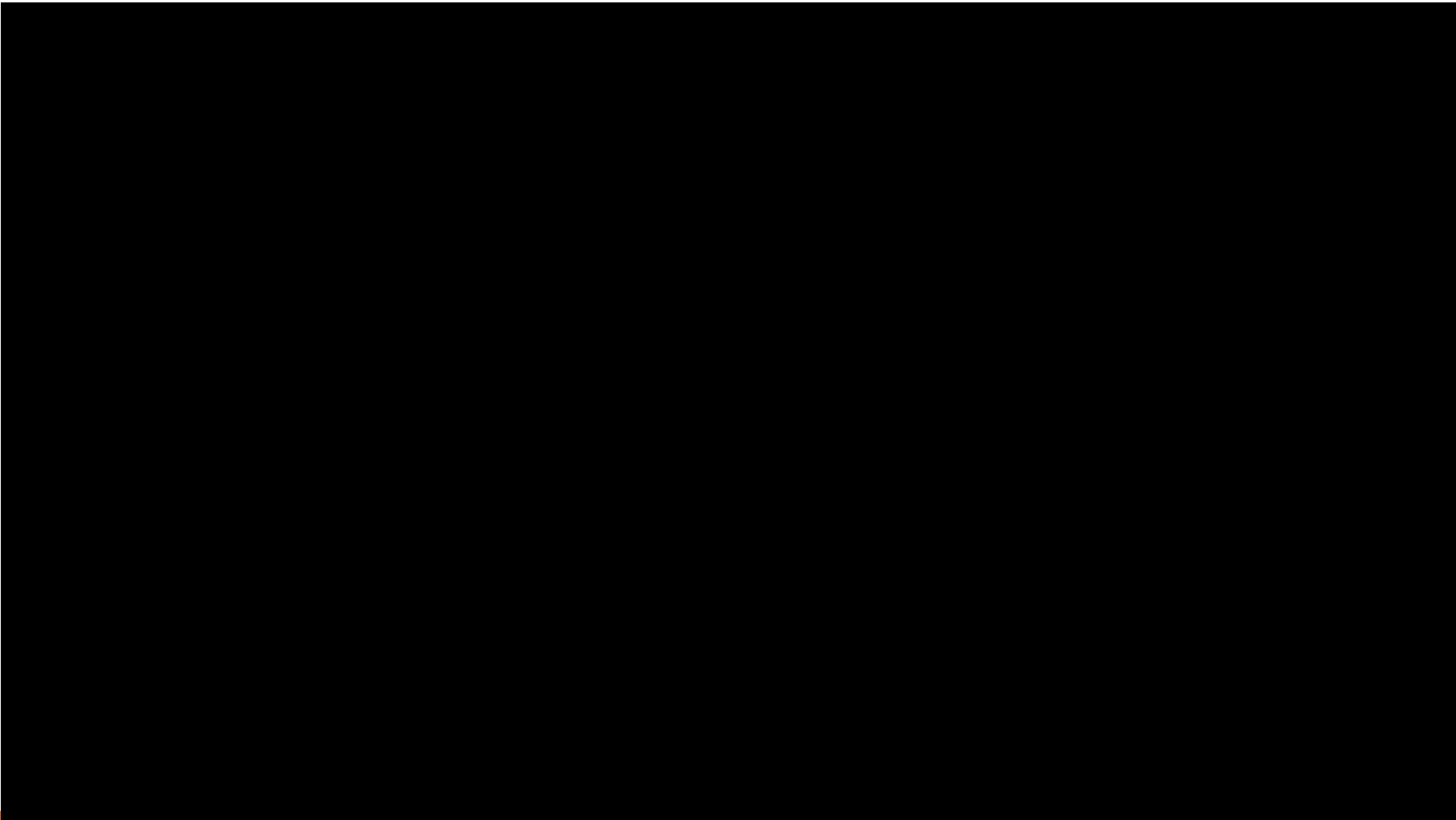
## 8 Drop-off bins

- ✓ Carpinteria
- ✓ Santa Maria
- ✓ Solvang
- ✓ Buellton
- ✓ Lompoc
- ✓ Santa Barbara
- ✓ Goleta
- ✓ Isla Vista

# EXISTING OMC COLLECTION SITES







# OPERATION MEDICINE CABINET CHALLENGES



- Unsustainable funding
- Limited staff capacity
- Need to increase level of public participation
- Lack of awareness of program
- Distribution of bins is not convenient or equitable

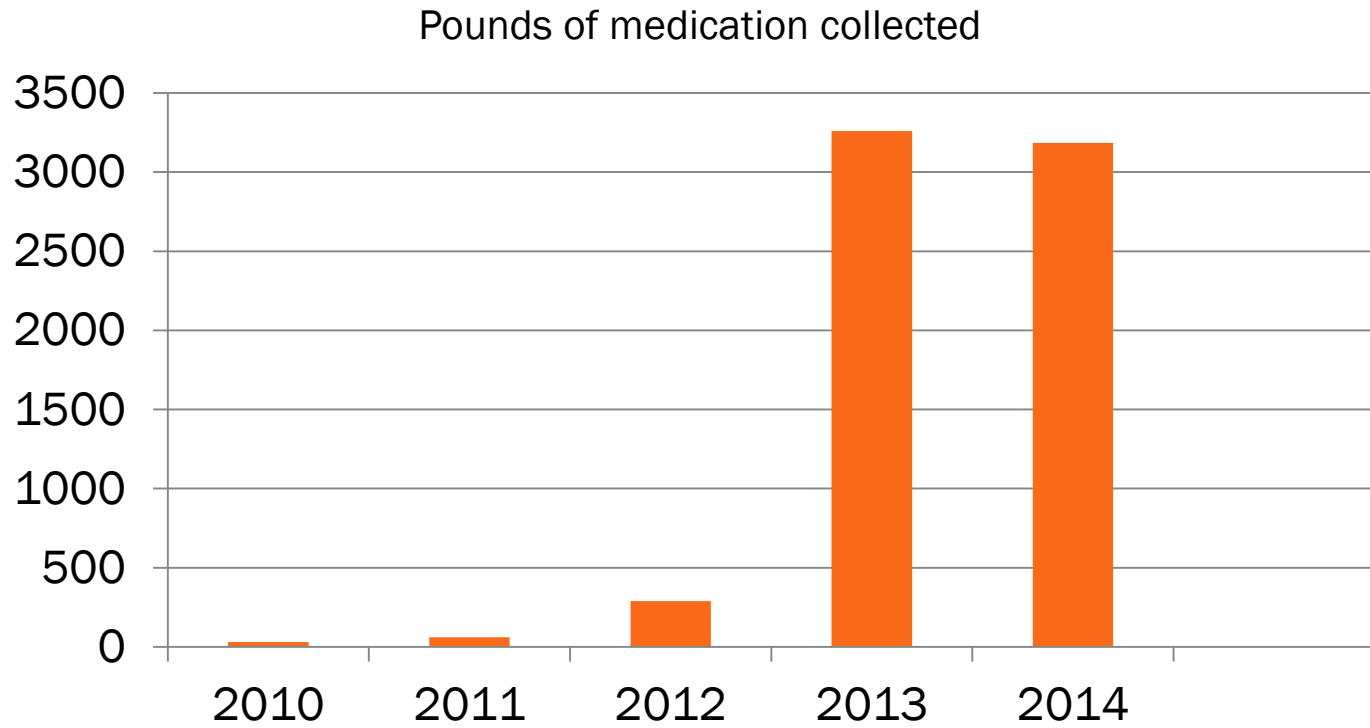
# EXISTING MEDICINE COLLECTION & DISTRIBUTION SITES



# DEA NEW REGS IMPACT IN SBC

- Opportunity to engage pharmacies
- Increased burden on local jurisdictions
- Reduction in options for residents


# DEA Take Back Events collected 6,823 lbs since 2010



Source: DEA LA Division

# POSSIBLE SOLUTION: EXTENDED PRODUCER RESPONSIBILITY

- 
- Producers are responsible for waste management of their products

- 
- EPR concept for mattresses, paint, thermostats, and carpet

- 
- SBC BOS support EPR (Attachment C)
- 

# PRODUCT STEWARDSHIP LOCAL MOMENTUM

- ✓ Alameda
- ✓ King County, Wa
- ✓ San Francisco
- ✓ San Mateo
- ✓ And global precedence



# EXTENDED PRODUCER RESPONSIBILITY FOR MEDS

Industry funded collection program

Pharmaceutical co. responsible for funding, design and operation of program

Public Health oversee compliance & safety



# INDUSTRY FUNDED MODEL

- ✓ Minimal PHD staff impacts
- ✓ Cost neutral for County
- ✓ No cost to taxpayer
- ✓ Minimal cost to drug companies

# OBJECTIVE

High level of participation from the public

Program that is...

- ✓ Convenient
- ✓ Sustainable
- ✓ Reliable

# BROAD STAKEHOLDER INTEREST IN SOLUTION

**First responders**

**Healthcare**

**Pharmacies**

**Wastewater  
treatment**

**County depts**

**Community Orgs:**

- Seniors
- Drug abuse prevention
- Water quality

**Local jurisdictions**

