



SANTA BARBARA COUNTY SHERIFF'S OFFICE

CUSTODY OPERATIONS

NORTHERN BRANCH JAIL
PAST, PRESENT, & FUTURE

SHERIFF BILL BROWN



HISTORY



BOARD ACTIONS

- 2008
 - \$56.3 million Conditional Award from State (March 2008)
 - County match of 25%
 - Purchased property
- 2011
 - Relinquished AB900 Phase I Award
 - Applied for AB900 Phase II Award
 - Greater State funding/reduced County match (10%)
 - Estimated net additional operations cost - \$17,522,028
- 2012
 - Accepted Conditional Award of \$80 million
 - Estimated net additional operations cost - \$17,345,362



BOARD ACTIONS

- 2013
 - SB1022 application submitted
 - Estimated net additional operations cost - \$1,411,400
 - AB900 Phase II operations cost update
 - Estimated net additional operations cost - \$16,244,600
 - Reduction of \$1,100,762
 - » Implementation of PEPPRA (Public Employee's Pension Reform Act)
 - » Cost elements moved from Main Jail to AB900 Phase II
 - Combined system cost - \$17,656,000



BOARD ACTIONS

- 2014
 - April: Submission of the following State required documents
 - AB900 Phase II - Preliminary Staffing Plan
 - AB900 Phase II - Operating Cost Analysis
 - Estimated net additional operations cost - \$15,862,994
 - AB900 Phase II Grant requires a system capacity of 1034 Beds
 - July: Board Accepted SB1022 Conditional Award \$38,976,000
 - Estimated net additional operations cost for SB1022 - \$2,092,100
 - AB900 and SB1022 estimated net additional cost - \$17,955,094



CURRENT CUSTODY SYSTEM



CUSTODY SYSTEM

ACTUAL BEDS - 2015



Actual Beds – 1143

Santa Barbara Main Jail
Actual Beds – 815

Medium Security Facility
Actual Beds – 285

Santa Maria Branch Jail
Actual Beds – 43



DEFINITIONS OF CUSTODY BEDS

- **Actual Beds**
 - The total number of Rated and Non-Rated Beds in a Custody Facility.
- **Rated Beds**
 - The number of beds that are recognized by the Board of State and Community Corrections (BSCC) as meeting the minimum standards and requirements.
- **Special Use Beds**
 - Beds that are not rated by the BSCC. These beds are dedicated for a special purpose in most cases for medical or disciplinary housing.
- **Non-Rated Beds**
 - The number of beds that exceed what was planned and designed for the facility. These beds are not recognized by the BSCC.



CUSTODY SYSTEM

RATED BED CAPACITY - 2015



Rated Beds – 847
(Actual Beds 1143)

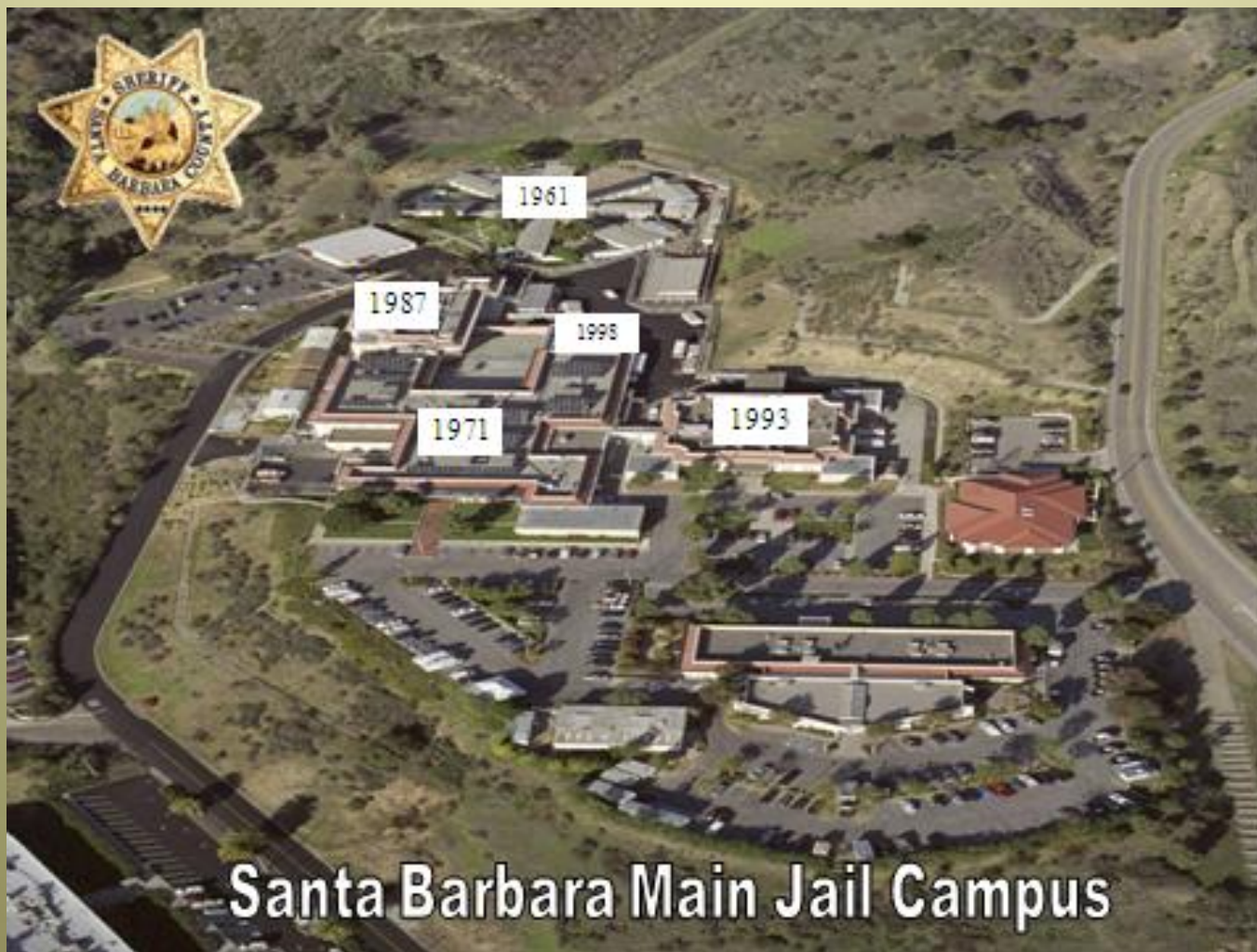
Santa Barbara Main Jail
Rated Beds – 659
(Actual Beds – 815)

Medium Security Facility
Rated Beds – 160
(Actual Beds – 285)

Santa Maria Branch Jail
Rated Beds – 28
(Actual Beds – 43)



EXISTING JAIL FACILITIES



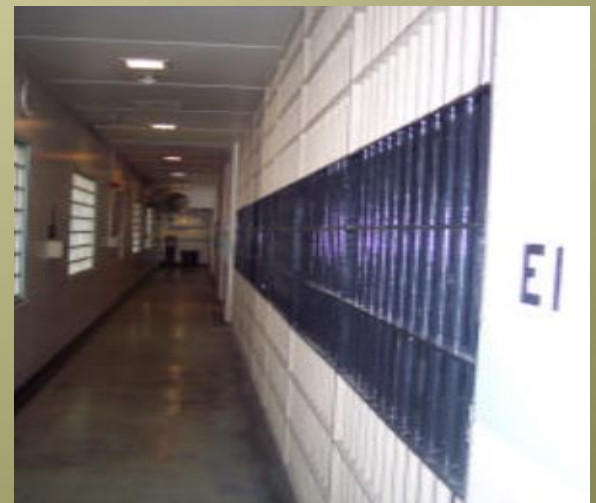


MAIN JAIL CAMPUS





ANTIQUATED FACILITY





EXISTING HOUSING UNITS



East Housing Unit - Main Jail

Male Basement Dorm - Main Jail





EXISTING HOUSING UNITS





SUPERVISION PHILOSOPHIES





DIRECT SUPERVISION HOUSING UNITS





OPENING OF THE NORTHERN BRANCH JAIL



CURRENT SYSTEM COSTS



The budget for running the Custody System is estimated to be \$46.7 million dollars in FY 2015-16. This includes:

- Operating Custody Facilities
 - Santa Barbara (Main Jail and Medium Security Facility)
 - Santa Maria (Santa Maria Branch Jail)
- Transportation of Inmates to Court
- Alternative Sentencing Bureau (ASB)
 - Includes
 - Electronic Monitoring (EM)
 - Sheriff's Work Alternative Program (SWAP)
 - Day Reporting Centers (DRC)



STAFFING IMPACTS

2015 Existing Custody System - Main Jail, MSF, and Santa Maria Branch Jail

Rated Beds - 847 Staffing - 254



2018 Custody System - Main Jail, FMSF, and AB900

Santa Maria Branch Jail and MSF closure - 24 existing positions transferred to AB900

Rated Beds - 1075 Staffing - 354



2019 Custody System - Main Jail, NBJ (AB900 & SB1022)

Basement Dorms and FMSF closure - 20 existing positions transferred to SB1022

Rated Beds - 1199 Staffing - 363



COST SUMMARY

The projected system cost of \$67,935,582

- Estimated net additional operations cost FY 2019-20
 - \$18,134,763
 - Does not include General Services maintenance cost
 - Factors that may drive this number lower
 - Potential savings from additional housing unit closures
 - Lower retirement rates
 - Inflationary costs
 - Factors that may drive this number higher
 - Negotiated salary increases



POTENTIAL SYSTEM REDUCTIONS



POTENTIAL ADDITIONAL MAIN JAIL CLOSURES



- Initial discussions centered around idea of 1200 ADP
- Inmate population has been declining
- Sheriff's Staff has developed a sequenced plan for closure of housing units in the Main Jail



MAIN JAIL CLOSURES

Tier-1

- Should the System ADP fall and remain below 850
 - Closure of West Module
 - 166 unused Rated Beds
 - 10 FTE's to operate
 - Would generate \$1.4 million in annual savings
 - Consists of reducing number of new CD's to be hired
 - Drops the inmate meal costs by the number of beds reduced



MAIN JAIL CLOSURES

Tier-2

- Should the System ADP fall and remain below 800
 - Closure of South Module
 - 60 unused Rated Beds
 - 5 FTE's
 - Would generate \$666,000 in annual savings
 - Consists of reducing number of new CD's to be hired
 - Drops the inmate meal costs by the number of beds reduced



MAIN JAIL CLOSURES

Tier-3

- Should the System ADP fall and remain below 659
 - Closure of East Module
 - 166 unused Rated Beds
 - 10 FTE's
 - Would generate \$1.4 million in annual savings
 - Consists of reducing the number of new CD's to be hired
 - Drops the inmate meal costs by the number of beds reduced



MAIN JAIL CLOSURES

Tier-4

- Should the System ADP fall and remain below 595
 - Closure of Northwest Module
 - 75 unused Rated Beds
 - 15 FTE's
 - Would generate \$1.8 million in annual savings
 - Consists of reducing number of new CD's to be hired
 - Drops the inmate meal costs by the number of reduced beds



SUMMARY OF MAIN JAIL CLOSURES



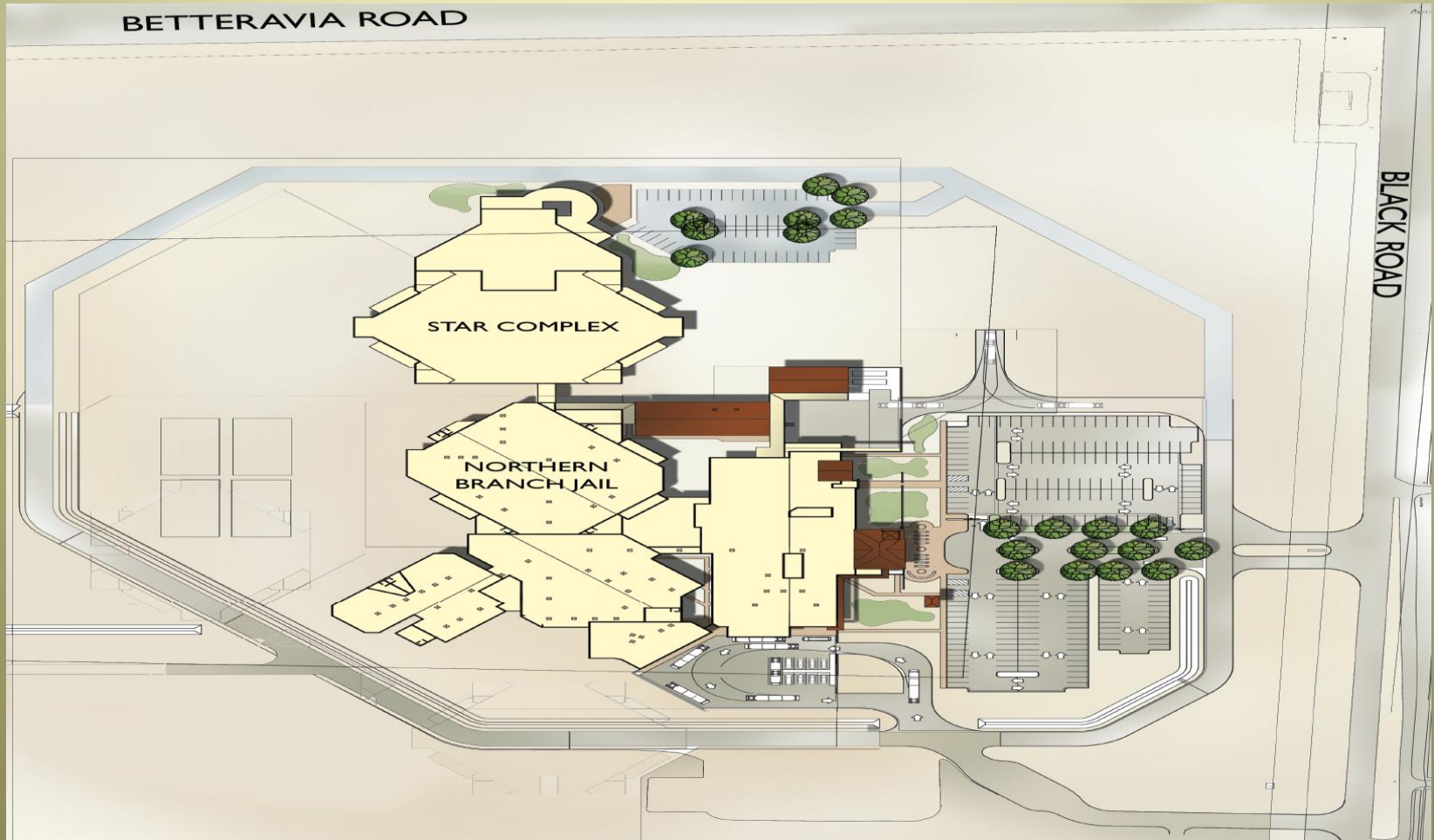
- With the closure of four modules at the Main Jail
 - Staff reduced by 40 Custody Deputies
 - System Rated Bed count reduced by 467 Rated Beds
 - Cost to run Custody Facilities at this reduced capacity
 - \$62,624,338
 - Savings of \$5,311,244
 - Savings Estimate does not include other potential reductions
 - » Medical and Administrative Costs



LOOKING FORWARD



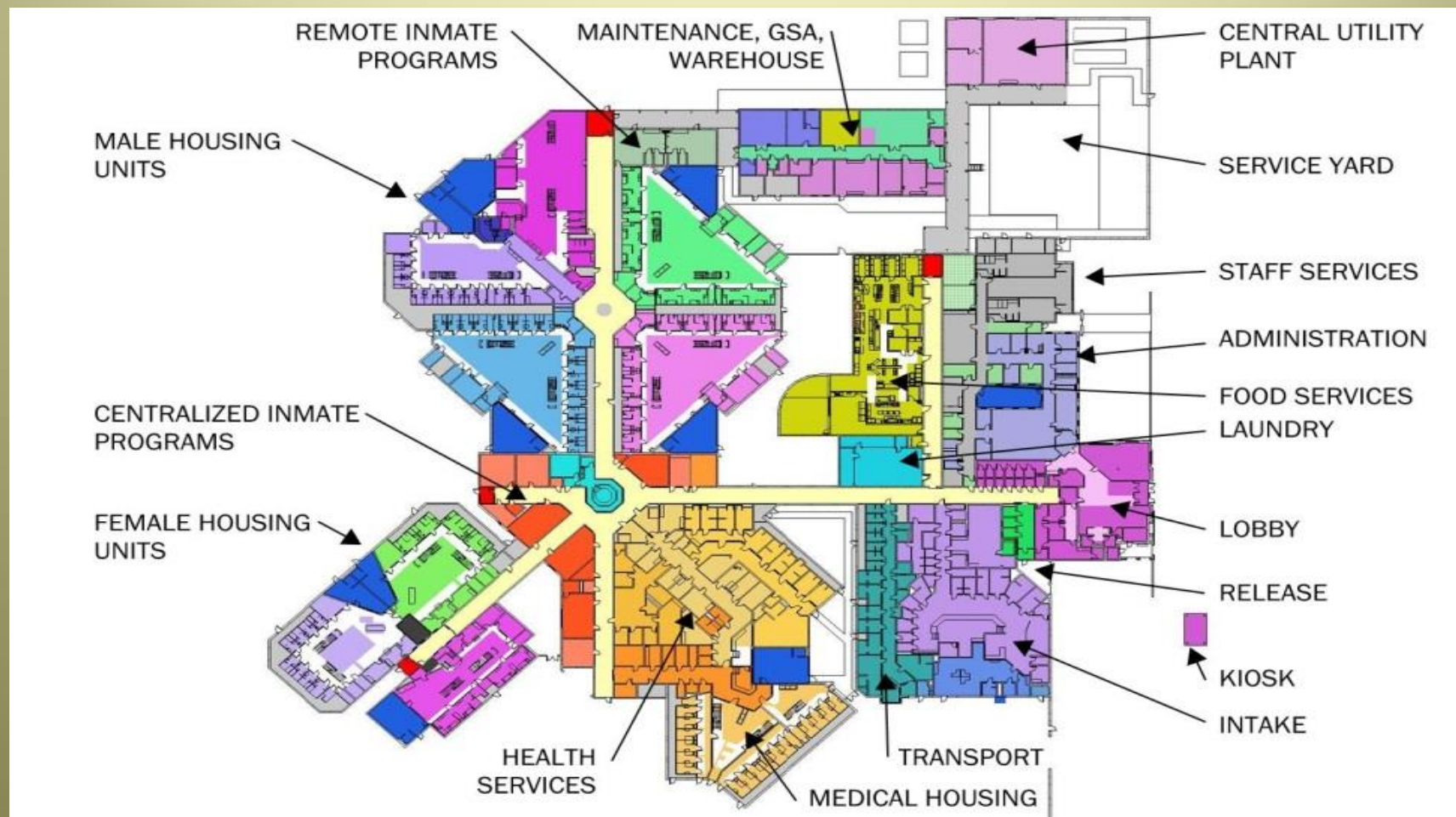
STATE-OF-THE-ART FACILITIES





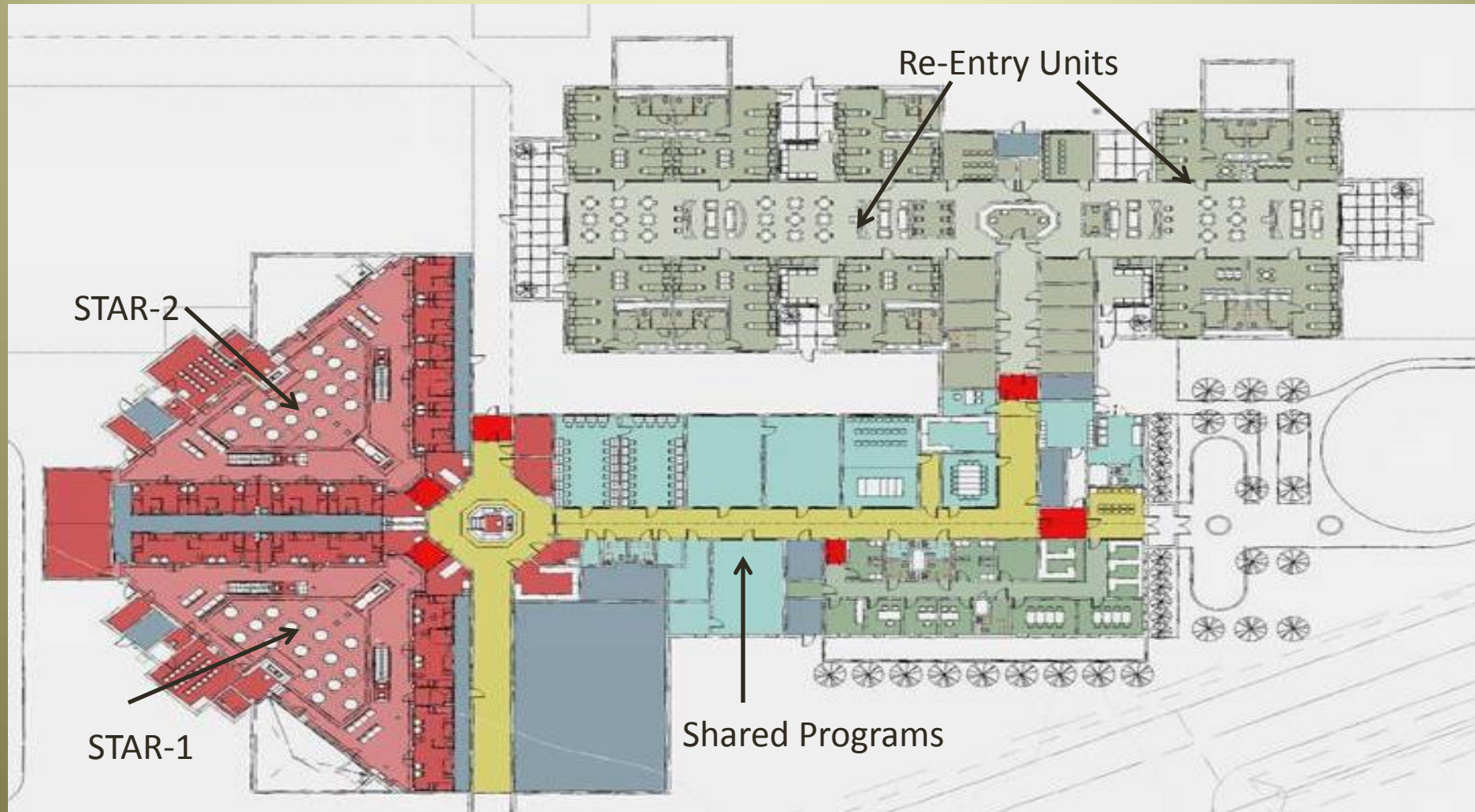
NORTHERN BRANCH JAIL

AB900



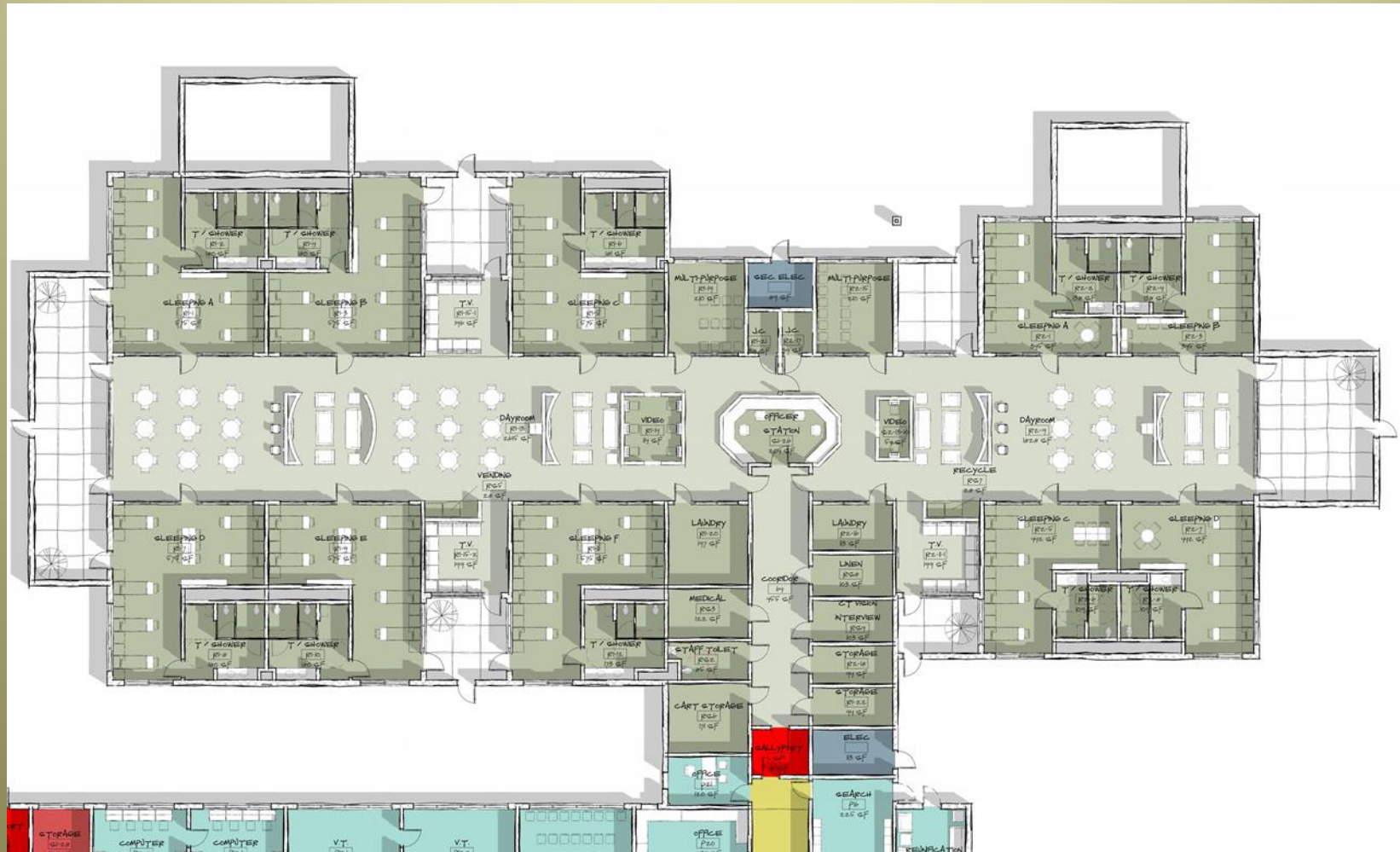


STAR COMPLEX





RE-ENTRY UNITS





RE-ENTRY UNITS





ENHANCED EVIDENCE BASED PROGRAMS



- Substance Abuse Education (New Directions)
- Substance Abuse Counseling
- Cognitive Curriculum (Thinking for a Change)
- Seeking Safety (Women's programming)
- Anger Management (SAMHSA Curriculum)
- Employment/Job Readiness
- Education
- Family Support Groups
- Parenting Skills
- Family Programming
- Wellness Classes and Stress Management
- Transition and Relapse Prevention Planning
- Co-Occurring Programs
- Aftercare Programming for one year post release



VOCATIONAL TRAINING PROGRAM OPPORTUNITIES



- Agriculture/Horticulture
- Auto repair
- Auto detailing
- Barbering/Beautician
- Building Maintenance
- Carpentry
- Computer Repair
- Custodial maintenance
- Dog Training/Grooming
- Electrical trades
- Food service/culinary arts
- Heating and Air Conditioning
- Masonry
- Plumbing
- Upholstery
- Welding



INMATE DOG TRAINING PROGRAM



Partnership with Local Shelters



Basic Obedience Training



Service Dog Training

Improves lives of Inmates and Dogs





CULINARY ARTS/AGRICULTURE



Teach inmates how to prepare restaurant quality meals



Grow Food for
Inmate Consumption
Local Food Banks

Basic Farming Skills



Prepare Inmates for
jobs upon their release





BENEFITS OF HAVING VOCATIONAL TRAINING PROGRAMS



- **For the Community:**

- Reduces recidivism saving tax-payer dollars
 - Every \$1 investment in jail education reduces incarceration costs by \$4-\$5 during first three years post release (Per 2013 Rand Study)
- Improves employability for inmates returning to community

- **For the Sheriff's Office:**

- Improves inmate cooperation
- Lowers recidivism
- Inmates are more compliant with fewer violations
- Promotes an institutional environment of less tension and violence while improving communication between staff and inmates



QUESTIONS?