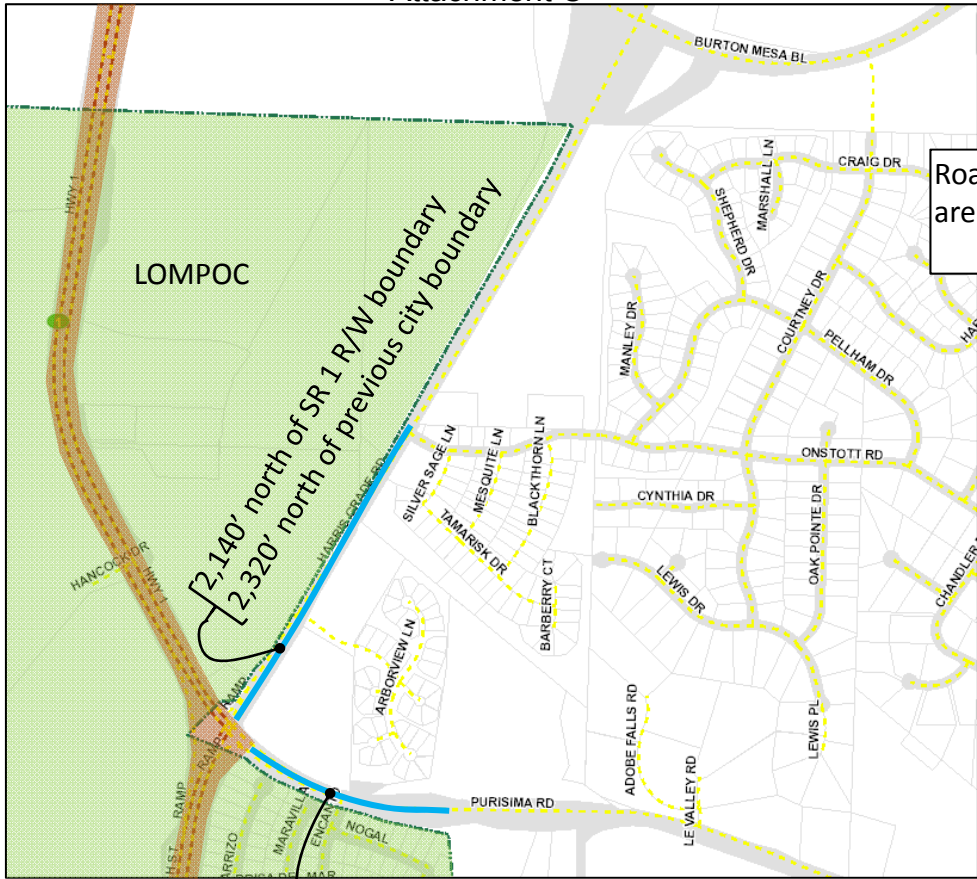


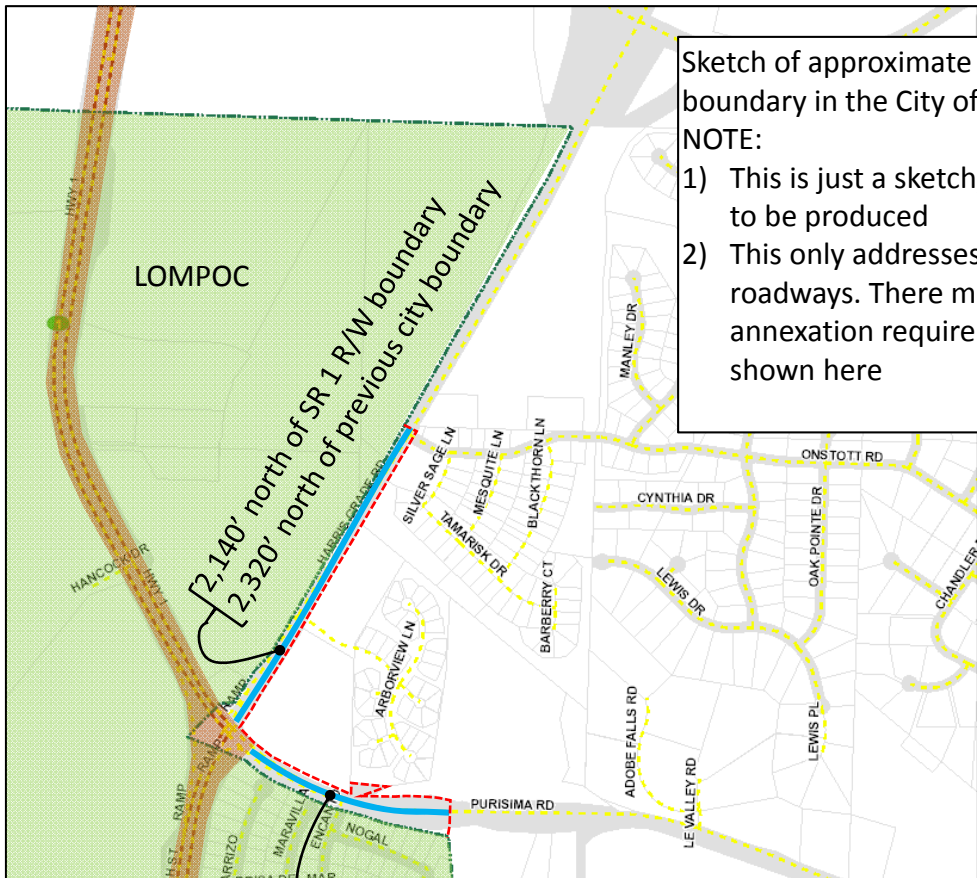
Attachment C



Roadway annexation area with lengths

2,140' north of SR 1 R/W boundary  
2,320' north of previous city boundary

1,350' east of SR 1 R/W boundary  
1,615' east from previous city boundary



Sketch of approximate new roadway boundary in the City of LompoC.  
NOTE:  
1) This is just a sketch, actual maps need to be produced  
2) This only addresses annexation for roadways. There may be other annexation requirements that are not shown here

2,140' north of SR 1 R/W boundary  
2,320' north of previous city boundary

1,350' east of SR 1 R/W boundary  
1,615' east from previous city boundary