

OWNER’S STATEMENT

I HEREBY STATE THAT I AM THE OWNER OF OR HAVE AN INTEREST IN THE LAND INCLUDED WITHIN THE SUBDIVISION SHOWN ON THE ANNEXED MAP, AND THAT I AM THE ONLY PERSON WHOSE CONSENT IS NECESSARY TO PASS CLEAR TITLE TO SAID LAND. I CONSENT TO THE PREPARATION AND RECORDATION OF SAID MAP AND SUBDIVISION AS SHOWN WITHIN THE DISTINCTIVE BORDER LINES.

I HEREBY OFFER TO DEDICATE TO THE SANTA BARBARA COUNTY FLOOD CONTROL AND WATER CONSERVATION DISTRICT EASEMENTS FOR INGRESS, EGRESS, DRAINAGE BASINS, STORM DRAIN PIPES, AND RELATED PURPOSES AS SHOWN HEREON.

I ALSO HEREBY OFFER TO DEDICATE TO THE COUNTY OF SANTA BARBARA EASEMENTS FOR PUBLIC MULTI–USE TRAIL AND RELATED PURPOSES AS SHOWN HEREON.

I ALSO HEREBY OFFER TO DEDICATE TO THE LAGUNA COUNTY SANITATION DISTRICT EASEMENTS FOR PUBLIC SANITARY SEWER PURPOSES AS SHOWN HEREON.

I ALSO HEREBY OFFER TO DEDICATE TO THE COUNTY OF SANTA BARBARA EASEMENTS FOR PUBLIC ROAD AND PUBLIC UTILITIES OVER BRADLEY ROAD, VILLAGE DRIVE AND SHULTZ LANE AS SHOWN HEREON.

I ALSO HEREBY OFFER TO DEDICATE TO THE COUNTY OF SANTA BARBARA EASEMENTS FOR PUBLIC MULTI–USE TRAIL INGRESS AND EGRESS AND PUBLIC UTILITIES OVER CHERRY AVENUE, MEEHAN LANE, HICKOK CIRCLE, SANDERS COURT, AND VIGIL CIRCLE AS SHOWN HEREON.

NORBERT DICKMAN, TRUSTEE OF THE BARBARA FASKEN 1995 TRUST
FBO ROGER DICKSON, DATED DECEMBER 19, 1995

BY: _____
NORBERT DICKMAN, TRUSTEE

NOTARY

A NOTARY PUBLIC OR OTHER OFFICER COMPLETING THIS CERTIFICATE
VERIFIES ONLY THE IDENTITY OF THE INDIVIDUAL WHO SIGNED THE
DOCUMENT TO WHICH THIS CERTIFICATE IS ATTACHED AND NOT THE
TRUTHFULNESS, ACCURACY, OR VALIDITY OF THE DOCUMENT.

STATE OF CALIFORNIA
COUNTY OF SANTA BARBARA

ON _____, BEFORE ME, _____,
PERSONALLY APPEARED _____, WHO PROVED TO ME ON THE BASIS
OF SATISFACTORY EVIDENCE TO BE THE PERSON(S) WHOSE NAME(S) IS/ARE SUBSCRIBED TO THE
WITHIN INSTRUMENT, AND ACKNOWLEDGED TO ME THAT HE/SHE/THEY EXECUTED THE SAME IN
HIS/HER/THEIR AUTHORIZED CAPACITY(IES), AND THAT BY HIS/HER/THEIR SIGNATURE(S) ON THE
INSTRUMENT, THE PERSON(S) OR THE ENTITY UPON BEHALF OF WHICH THE PERSON(S) ACTED,
EXECUTED THE INSTRUMENT.

I CERTIFY UNDER PENALTY OF PERJURY UNDER THE LAWS OF THE STATE OF CALIFORNIA THAT THE
FOREGOING PARAGRAPH IS TRUE AND CORRECT.

WITNESS MY HAND AND OFFICIAL SEAL:

SIGNATURE:_____

NAME PRINTED _____

COMMISSION EXPIRES _____

COMMISSION No. _____

PRINCIPAL OFFICE LOCATED IN THE COUNTY OF _____

FINAL MAP NO. 14,739

COUNTY OF SANTA BARBARA, STATE OF CALIFORNIA

BEING A SUBDIVISION OF THE SOUTH HALF OF THE NORTHEAST QUARTER OF
SECTION 11, TOWNSHIP 9 NORTH, RANGE 34 WEST, SAN BERNARDINO MERIDIAN,
IN THE COUNTY OF SANTA BARBARA, STATE OF CALIFORNIA,
ACCORDING TO THE OFFICIAL PLAT THEREOF.

SHEET 1 OF 9 SHEETS



SIGNATURE OMISSIONS

EASEMENT HOLDERS

THE SIGNATURES OF THE FOLLOWING EASEMENT HOLDERS HAVE BEEN OMITTED PURSUANT TO
SECTION 66436(a)(3)(B) OF THE GOVERNMENT CODE (STATE SUBDIVISION MAP ACT):

COUNTY OF SANTA BARBARA, EASEMENT HOLDER FOR PUBLIC ROAD AND INCIDENTAL PURPOSES
PER DOCUMENT RECORDED APRIL 26, 1962 AS INSTRUMENT NO. 17041 IN BOOK 1922, PAGE 388
OF OFFICIAL RECORDS.

COUNTY OF SANTA BARBARA, EASEMENT HOLDER FOR CUT AND FILL SLOPES AND INCIDENTAL
PURPOSES PER DOCUMENT RECORDED MARCH 6, 1974 AS INSTRUMENT NO. 7844 IN BOOK 2505,
PAGE 284 OF OFFICIAL RECORDS.

MCCADDEN DEVELOPMENT, LLC, A DELAWARE LIMITED LIABILITY COMPANY, EASEMENT HOLDER FOR
WATER WELL AND RELATED PURPOSES PER DOCUMENT RECORDED APRIL 6, 2005 AS INSTRUMENT
NO. 2005–31228 OF OFFICIAL RECORDS.

SANTA MARIA PUBLIC AIRPORT DISTRICT, A PUBLIC AIRPORT DISTRICT OF THE STATE OF
CALIFORNIA, HOLDER OF AN EASEMENT FOR AVIGATION PURPOSES RECORDED SEPTEMBER 29, 2015
AS INSTRUMENT NO. 2015–0051959 OF OFFICIAL RECORDS.

ABANDONMENT

THIS FOLLOWING EASEMENTS ARE TO BE ABANDONED BY THIS MAP PER GOVERNMENT CODE
SECTION 66434(g) (STATE SUBDIVISION MAP ACT):

1. EASEMENT FOR PUBLIC ROAD AND INCIDENTAL PURPOSES PER DOCUMENT RECORDED APRIL 26,
1962 AS INSTRUMENT NO. 17041 IN BOOK 1922, PAGE 388 OF OFFICIAL RECORDS.

2. EASEMENT FOR CUT AND FILL SLOPES AND INCIDENTAL PURPOSES PER DOCUMENT RECORDED
MARCH 6, 1974 AS INSTRUMENT NO. 7844 IN BOOK 2505, PAGE 284 OF OFFICIAL RECORDS.

NOTE

THIS MAP IS SUBJECT TO CERTAIN CONDITIONS AND INFORMATION INCLUDED IN A "NOTICE" AND

RECORDED CONCURRENTLY AS INSTRUMENT NO. _____ O.R.

RECORDER’S STATEMENT

FILED THIS _____ DAY OF _____, 20____, AT _____M. IN BOOK _____, OF
MAPS AT PAGES _____ AT THE REQUEST OF STANTEC CONSULTING

FEE: _____

JOSEPH E. HOLLAND
COUNTY CLERK–RECORDER–ASSESSOR

BY: _____
DEPUTY

SURVEYOR’S STATEMENT

THIS MAP WAS PREPARED BY ME OR UNDER MY DIRECTION AND IS BASED UPON A FIELD
SURVEY IN CONFORMANCE WITH THE REQUIREMENTS OF THE SUBDIVISION MAP ACT AND LOCAL
ORDINANCE AT THE REQUEST OF VERNON CONSTRUCTION, INC. IN OCTOBER 2014. I HEREBY
STATE THAT ALL THE MONUMENTS ARE OF THE CHARACTER AND OCCUPY THE POSITIONS
INDICATED OR THAT THEY WILL BE SET IN THOSE POSITIONS WITHIN ONE YEAR FROM THE
RECORDATION OF THIS MAP, AND THAT THE MONUMENTS ARE, OR WILL BE, SUFFICIENT TO
ENABLE THE SURVEY TO BE RETRACED, AND THAT THIS FINAL MAP SUBSTANTIALLY CONFORMS TO
THE CONDITIONALLY APPROVED TENTATIVE MAP.

RYAN A. EDWARDS
PLS NO. 9116

DATE _____

COUNTY SURVEYOR’S STATEMENT

I HEREBY STATE THAT I HAVE EXAMINED THIS MAP, THAT THE SUBDIVISION AS SHOWN IS
SUBSTANTIALLY THE SAME AS IT APPEARED ON THE TENTATIVE MAP, IF REQUIRED, AND ANY
APPROVED ALTERATIONS THEREOF, THAT ALL PROVISIONS OF CHAPTER 2 OF THE SUBDIVISION MAP
ACT AND ANY LOCAL ORDINANCES APPLICABLE AT THE TIME OF THE TENTATIVE MAP, IF REQUIRED,
HAVE BEEN COMPLIED WITH AND THAT I AM SATISFIED THAT THE MAP IS TECHNICALLY CORRECT.

ALEKSANDAR JEVRMOVIC, PLS NO. 8378
COUNTY SURVEYOR
LICENSE EXPIRATION DATE: 12/31/2015

DATE _____

CLERK OF THE BOARD’S STATEMENT

I, MONA MIYASATO, CLERK OF THE BOARD OF SUPERVISORS OF SANTA BARBARA COUNTY, DO

HEREBY STATE THAT ON _____, 2015, I WAS DULY AUTHORIZED AND
DIRECTED TO ENDORSE HEREON THE BOARD’S APPROVAL AND ACCEPTANCE OF EASEMENTS FOR
PUBLIC MULTI–USE TRAIL AND RELATED PURPOSES; I HEREBY ALSO ACCEPT THE EASEMENTS FOR
PUBLIC ROAD AND PUBLIC UTILITIES OVER BRADLEY ROAD, VILLAGE DRIVE, AND SHULTZ LANE; I
HEREBY ALSO ACCEPT THE EASEMENTS FOR PUBLIC PEDESTRIAN INGRESS AND EGRESS AND PUBLIC
UTILITIES OVER CHERRY AVENUE, MEEHAN LANE, HICKOK CIRCLE, SANDERS COURT, VIGIL CIRCLE,
VILLAGE DRIVE AND SHULTZ LANE; I HEREBY ALSO ACCEPT THE ABANDONMENT OF EASEMENTS FOR
PUBLIC ROAD AND CUT AND FILL SLOPES AS NOTED HEREON. I FURTHERMORE STATE THAT
PURSUANT TO GOVERNMENT CODE SECTION 66464 (STATE SUBDIVISION MAP ACT), THAT THE
CERTIFICATES AND DEPOSITS REQUIRED UNDER GOVERNMENT CODE SECTION 66492 AND 66493
(STATE SUBDIVISION MAP ACT) ON THE PROPERTY WITHIN THIS SUBDIVISION HAVE BEEN FILED AND
MADE.

MONA MIYASATO
CLERK OF THE BOARD OF SUPERVISORS
OF SANTA BARBARA COUNTY

BY: _____
DEPUTY DATE

BOARD OF DIRECTOR’S STATEMENT

I, MONA MIYASATO, CLERK OF THE BOARD OF DIRECTORS OF THE SANTA BARBARA COUNTY FLOOD
CONTROL AND WATER CONSERVATION DISTRICT , DO HEREBY STATE THAT ON

_____, 2015, I WAS DULY AUTHORIZED AND DIRECTED TO ENDORSE HEREON
THE BOARD’S APPROVAL AND ACCEPTANCE OF EASEMENTS FOR INGRESS, EGRESS, DRAINAGE
BASINS, STORM DRAIN PIPES, AND RELATED PURPOSES AS SHOWN ON THIS MAP.

MONA MIYASATO
CLERK OF THE BOARD OF DIRECTORS
SANTA BARBARA COUNTY FLOOD CONTROL
AND WATER CONSERVATION DISTRICT

BY: _____
DEPUTY DATE

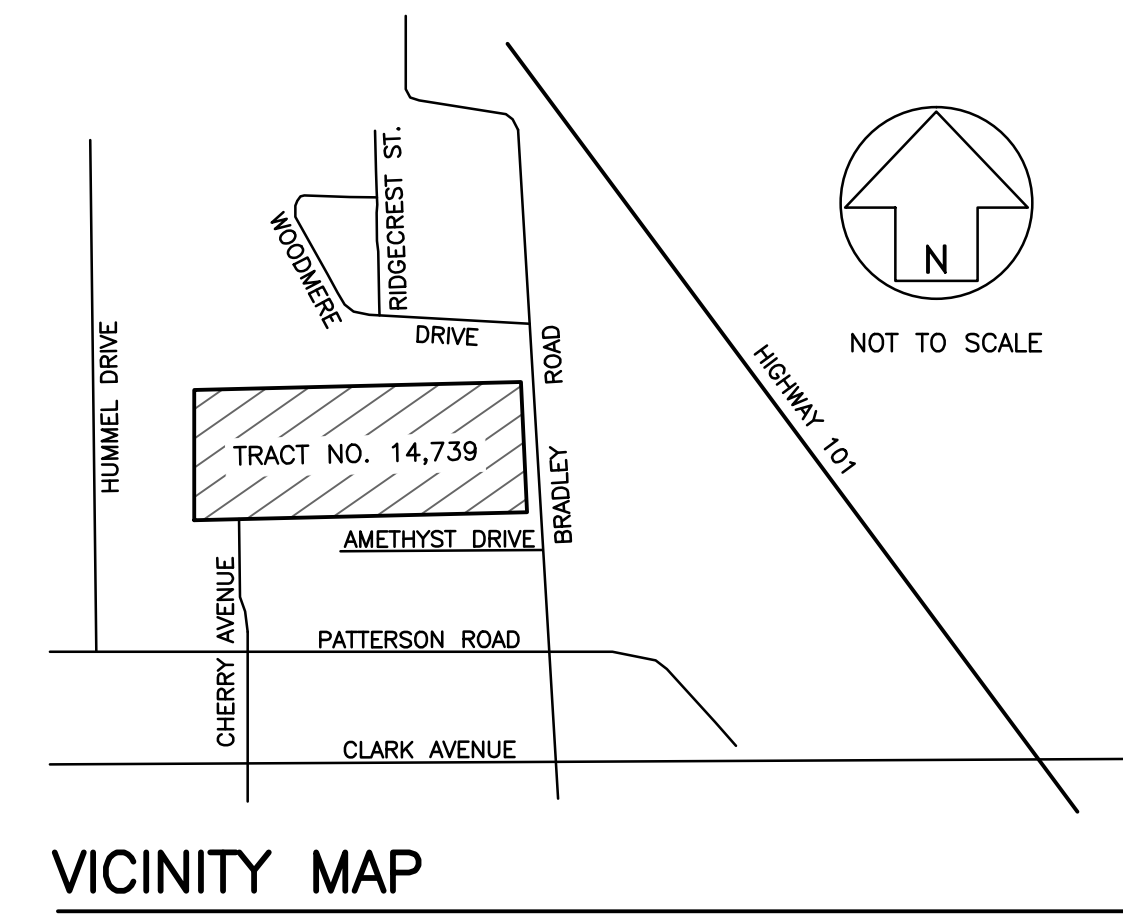
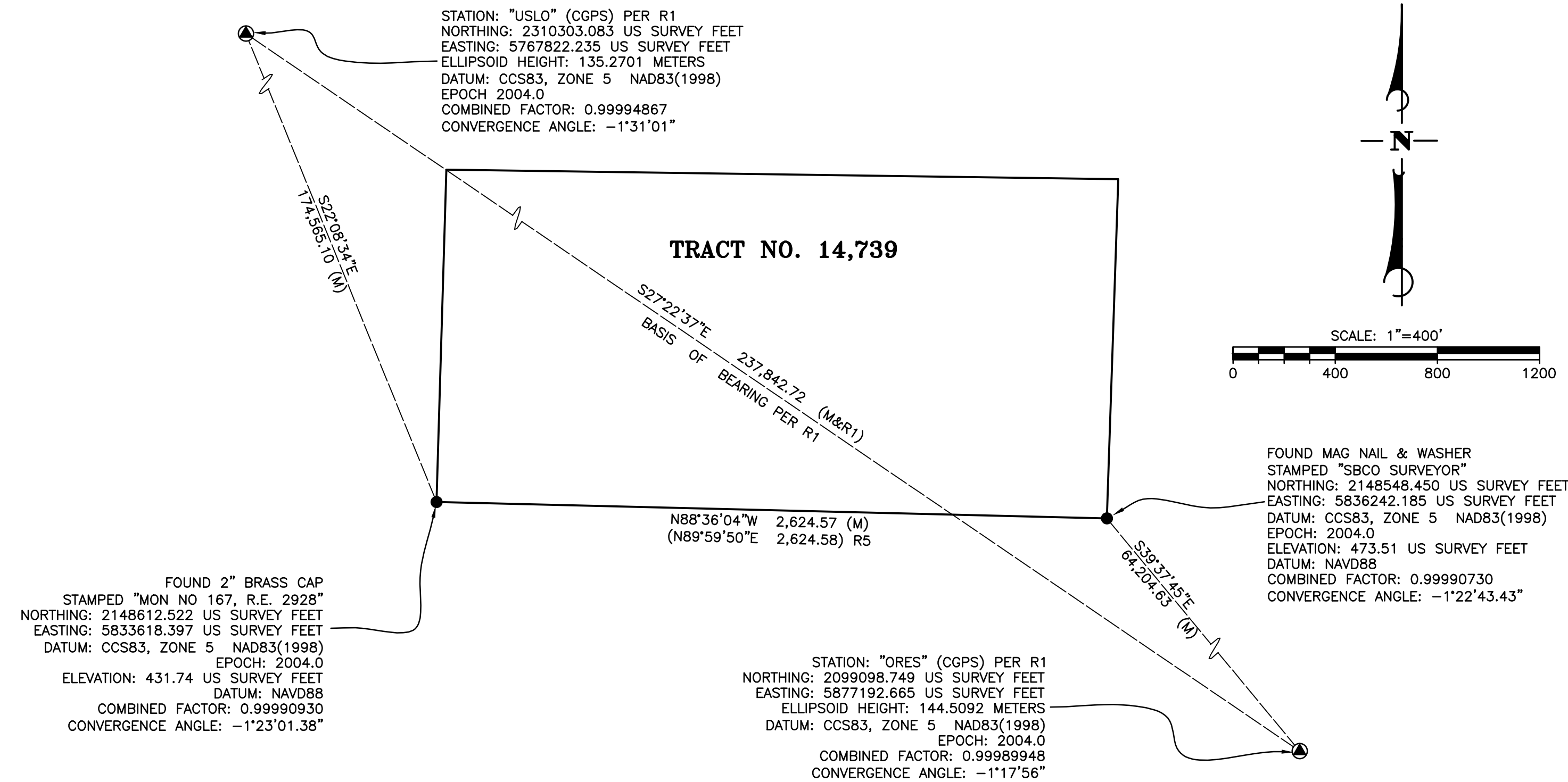
BOARD OF DIRECTOR’S STATEMENT

I, MONA MIYASATO, CLERK OF THE BOARD OF DIRECTORS OF THE LAGUNA COUNTY SANITATION

DISTRICT, DO HEREBY STATE THAT ON _____, 2015, I WAS DULY AUTHORIZED
AND DIRECTED TO ENDORSE HEREON THE BOARD’S APPROVAL AND ACCEPTANCE OF EASEMENTS
FOR PUBLIC SANITARY SEWER PURPOSES AS SHOWN ON THIS MAP.

MONA MIYASATO
CLERK OF THE BOARD OF DIRECTORS
LAGUNA COUNTY SANITATION DISTRICT

BY: _____
DEPUTY DATE



TIES TO CALIFORNIA COORDINATE SYSTEM

SURVEYOR'S NOTES

1. ALL COORDINATES, DISTANCES AND BEARINGS SHOWN ON THIS MAP ARE REFERENCED TO THE CALIFORNIA COORDINATE SYSTEM, NAD83, ZONE 5 GRID, EPOCH 2004.0 DISTANCES AND COORDINATES ARE EXPRESSED IN U.S. SURVEY FOOT UNITS.
2. ALL OTHER DISTANCES SHOWN ON THIS MAP HAVE BEEN SCALED TO GROUND AND ARE EXPRESSED IN US SURVEY FOOT UNITS. THE SITE COMBINATION FACTOR IS 0.99990930, AND THE SITE MAPPING ANGLE IS -1°23'01.38", BOTH CALCULATED AT THE MONUMENT LOCATED AT THE SOUTHWEST CORNER OF TRACT 14739. TO OBTAIN GRID LEVEL DISTANCES, MULTIPLE GROUND DISTANCES BY THE PROJECT COMBINATION FACTOR. TO OBTAIN TRUE AZIMUTH, ADD THE MAPPING ANGLE TO THE GRID AZIMUTH.
3. ELEVATIONS HAVE BEEN DETERMINED USING GEOID MODELING, ARE EXPRESSED IN U.S. SURVEY FEET AND ARE REFERENCED TO THE NORTH AMERICAN VERTICAL DATUM OF 1988 (NAVD88) DEFINED LOCALLY BY CSRC CGPS STATION "USLO". THE ELEVATION AT THE GROUND REFERENCE MARK OF "USLO" IS 557.03 FEET, AND WAS DETERMINED AS PART OF THE "DIFFERENTIAL LEVELING TO CGPS STATIONS IN SOUTHERN CALIFORNIA" PROJECT EXECUTED BY THE CALIFORNIA SPATIAL REFERENCE CENTER IN 2004 PER R11.
4. COMBINED FACTORS ARE THE PRODUCT OF THE ELEVATION FACTOR TIMES THE CCS83 SCALE FACTOR. ELEVATION FACTORS WERE COMPUTED USING A VALUE OF 20,906,000 FEET AS THE RADIUS OF CURVATURE OF THE EARTH AND THE GEOID MODEL AT THE STATION. THE GEOID HEIGHT WAS INTERPOLATED FROM THE NGS GEOID12A GEOID MODEL.

LEGEND

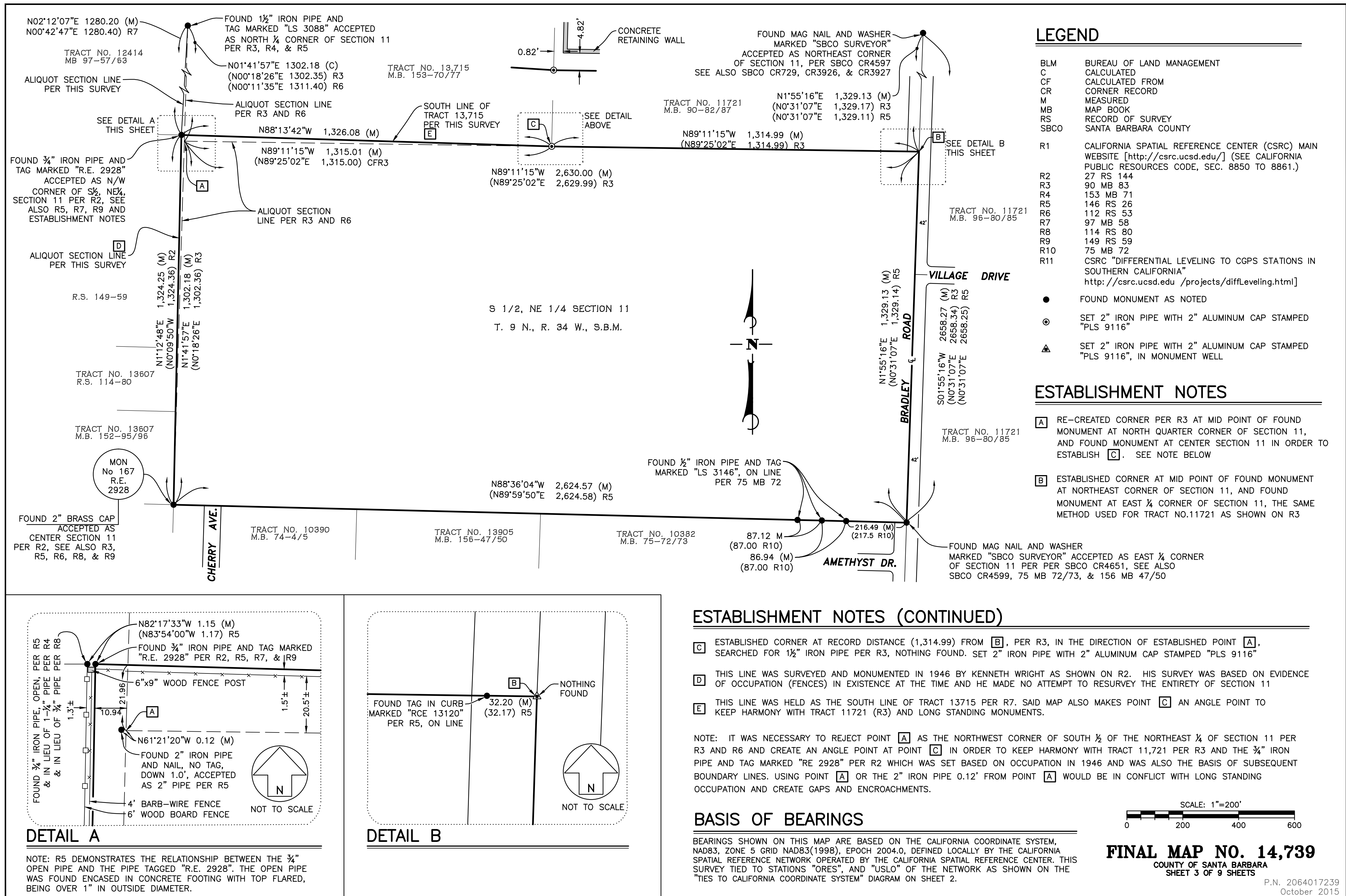
- | | |
|--------|--------------------------------------|
| CF | CALCULATED FROM |
| CGPS | CONTINUOUS GPS STATION |
| CSRC | CALIFORNIA SPATIAL REFERENCE CENTER |
| CSRN | CALIFORNIA SPATIAL REFERENCE NETWORK |
| CR | CORNER RECORD |
| FTC | FROM TRUE CORNER |
| G.S.F. | GROSS SQUARE FEET |
| M | MEASURED |
| MB | MAP BOOK |
| N.S.F. | NET SQUARE FEET |
| O.R. | OFFICIAL RECORDS |
| PM | PARCEL MAP BOOK |
| RS | RECORD OF SURVEY |
| R.O.W. | RIGHT OF WAY |
- CONTINUOUS GPS STATION (CGPS)
- FOUND MONUMENT AS NOTED
- SET 1/2" IRON PIPE WITH TAG STAMPED "PLS 9116"
- SET LEAD & TACK WITH TAG STAMPED "PLS 9116" SET ON LOT LINE, ON TOP OF CURB, 18.25' FROM STREET CENTERLINE WHERE CURB IS CONCENTRIC WITH CENTERLINE
- ⊙ SET 2" IRON PIPE WITH 2" ALUMINUM CAP STAMPED "PLS 9116"
- ⌵ SET SPIKE AND WASHER STAMPED "PLS 9116"
- ▲ SET 2" IRON PIPE WITH 2" ALUMINUM CAP STAMPED "PLS 9116", IN MONUMENT WELL

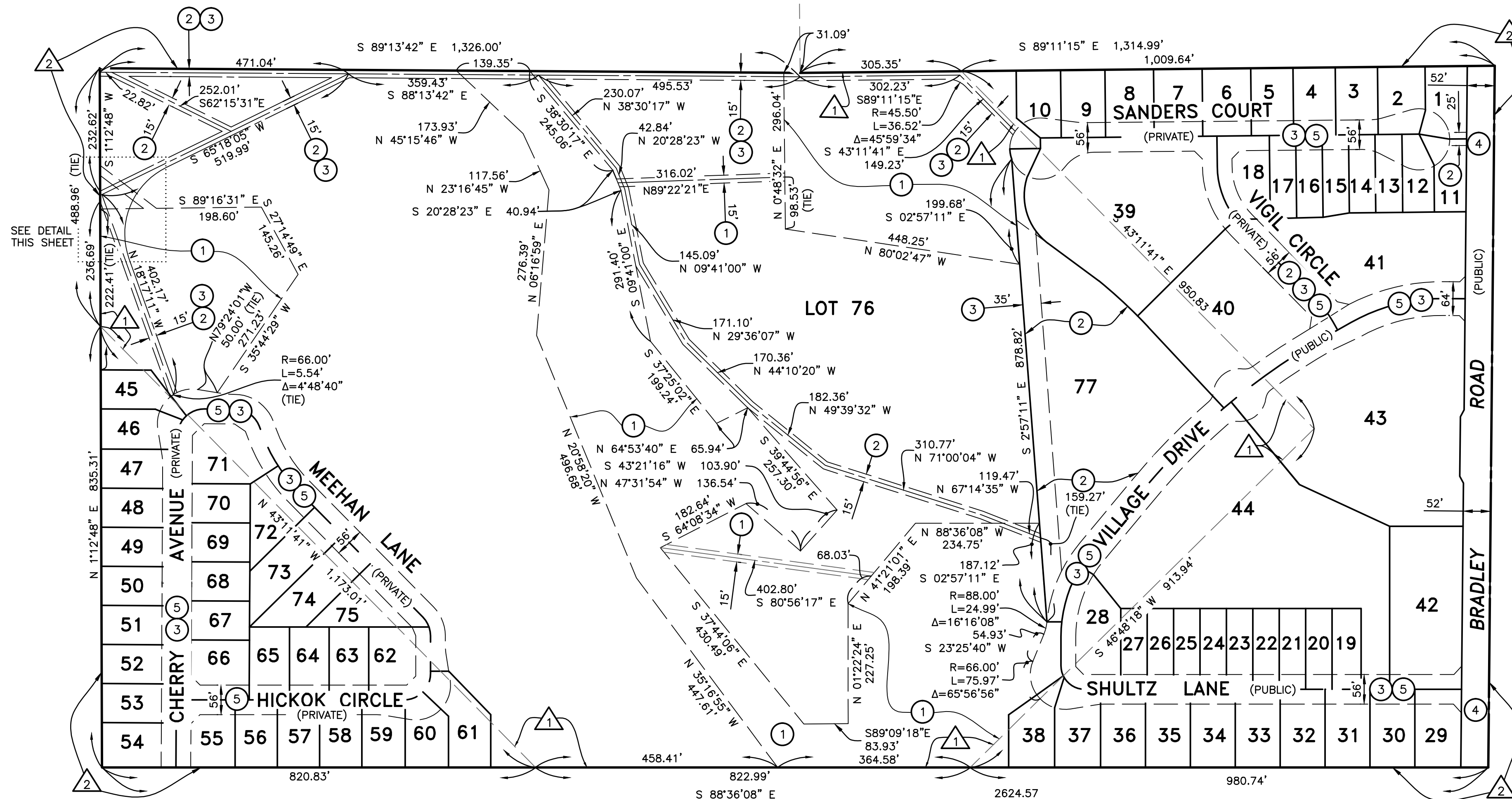
BASIS OF BEARINGS

BEARINGS SHOWN ON THIS MAP ARE BASED ON THE CALIFORNIA COORDINATE SYSTEM, NAD83, ZONE 5 GRID NAD83(1998), EPOCH 2004.0, DEFINED LOCALLY BY THE CALIFORNIA SPATIAL REFERENCE NETWORK OPERATED BY THE CALIFORNIA SPATIAL REFERENCE CENTER. THIS SURVEY TIED TO STATIONS "ORES", AND "USLO" OF THE NETWORK AS SHOWN ON THE "TIES TO CALIFORNIA COORDINATE SYSTEM" DIAGRAM ON THIS SHEET.

REFERENCES

- R1 CALIFORNIA SPATIAL REFERENCE CENTER (CSRC) MAIN WEBSITE
[<http://csrc.ucsd.edu/>] (SEE CALIFORNIA PUBLIC RESOURCES CODE, SEC. 8850 TO 8861.)
- R2 27 RS 144
- R3 90 MB 83
- R4 153 MB 71
- R5 146 RS 26
- R6 112 RS 53
- R7 97 MB 58
- R8 114 RS 80
- R11 CSRC "DIFFERENTIAL LEVELING TO CGPS STATIONS IN SOUTHERN CALIFORNIA" [<http://csrc.ucsd.edu/projects/diffLeveling.html>]



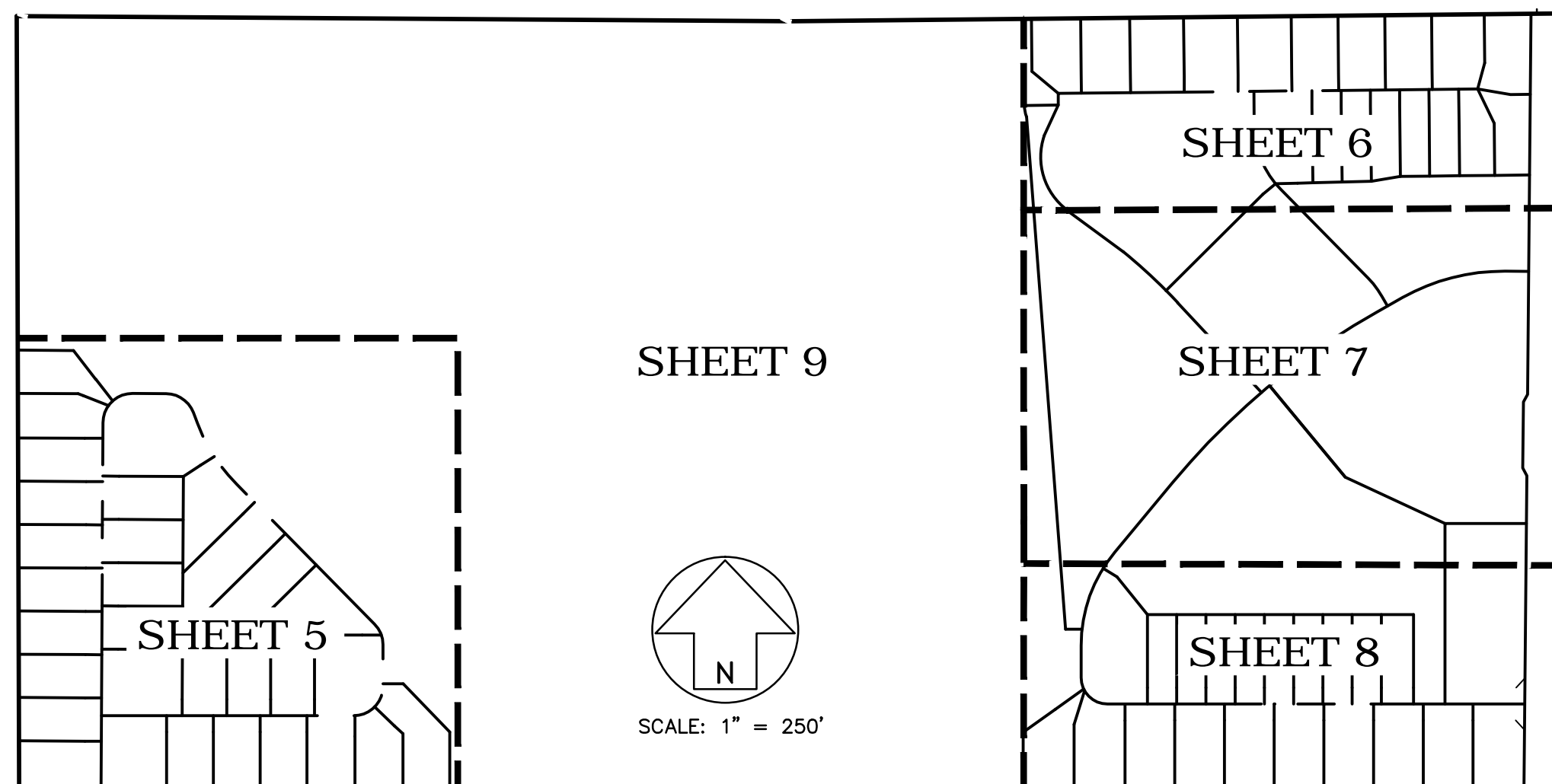


EXISTING EASEMENT NOTES

- ① EASEMENT FOR WATER WELL AND RELATED PURPOSES PER DOCUMENT RECORDED APRIL 6, 2005 AS INSTRUMENT NO. 2005-31228 OF OFFICIAL RECORDS.
- ② EASEMENT FOR AVIGATION PURPOSES RECORDED SEPTEMBER 29, 2015 AS INSTRUMENT NO. 2015-0051959 OF OFFICIAL RECORDS. BLANKET OVER ENTIRE TRACT.

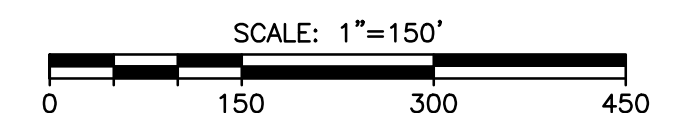
PROPOSED EASEMENT NOTES

- ① EASEMENT FOR INGRESS, EGRESS, DRAINAGE BASINS, STORM DRAIN PIPES, AND RELATED PURPOSES DEDICATED TO THE SANTA BARBARA COUNTY FLOOD CONTROL AND WATER CONSERVATION DISTRICT PER THIS MAP.
- ② EASEMENT FOR PUBLIC MULTI-USE TRAIL AND RELATED PURPOSES DEDICATED TO COUNTY OF SANTA BARBARA PER THIS MAP.
- ③ EASEMENT FOR PUBLIC UTILITIES AND FOR PUBLIC SANITARY SEWER PURPOSES DEDICATED TO LAGUNA COUNTY SANITATION DISTRICT PER THIS MAP.
- ④ EASEMENT FOR PUBLIC ROAD AND PUBLIC UTILITIES DEDICATED TO THE COUNTY OF SANTA BARBARA PER THIS MAP.
- ⑤ EASEMENT FOR PUBLIC MULTI-USE TRAIL AND PUBLIC UTILITIES DEDICATED TO THE COUNTY OF SANTA BARBARA PER THIS MAP.



BASIS OF BEARINGS

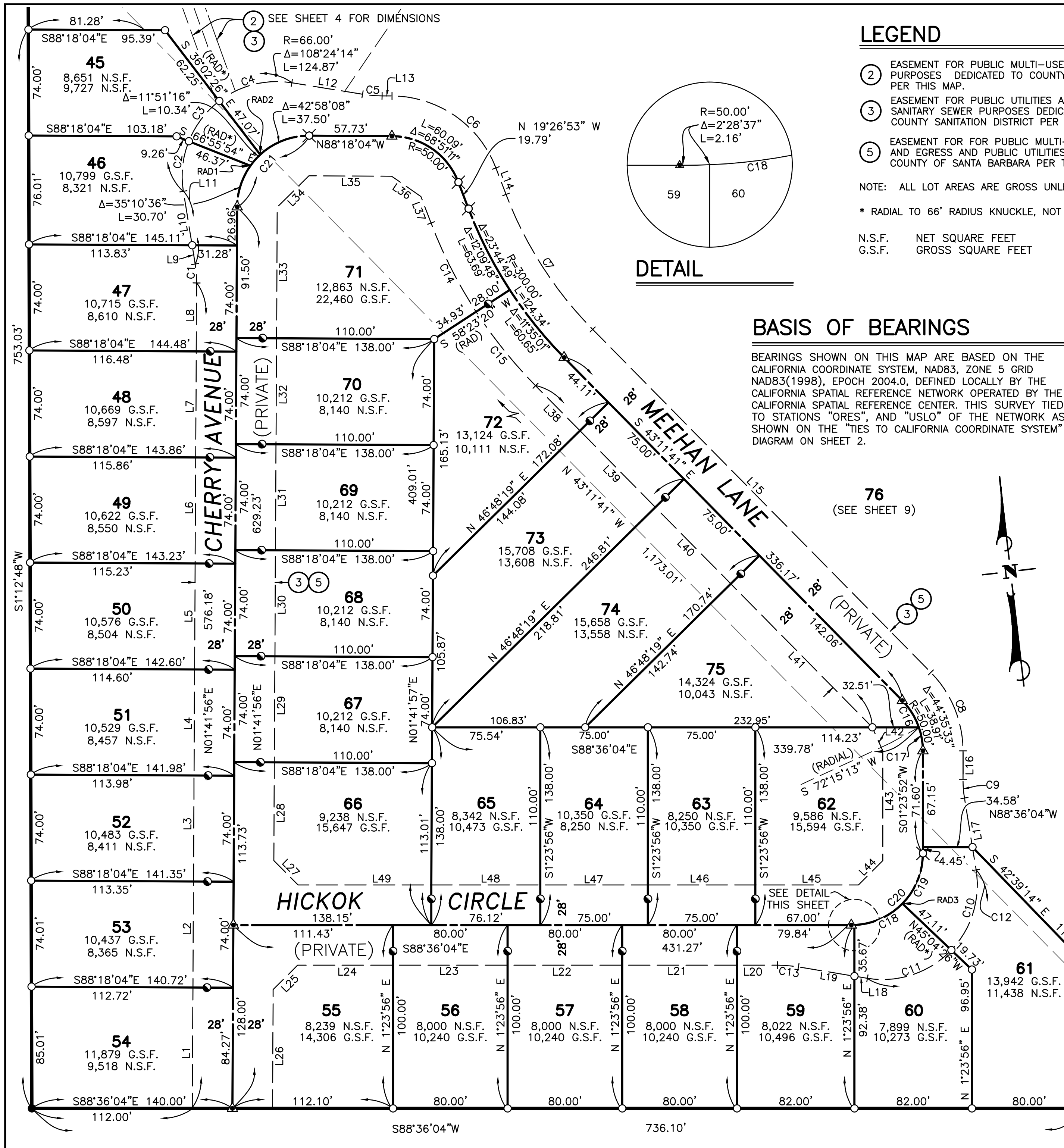
BEARINGS SHOWN ON THIS MAP ARE BASED ON THE CALIFORNIA COORDINATE SYSTEM, NAD83, ZONE 5 GRID NAD83(1998), EPOCH 2004.0, DEFINED LOCALLY BY THE CALIFORNIA SPATIAL REFERENCE NETWORK OPERATED BY THE CALIFORNIA SPATIAL REFERENCE CENTER. THIS SURVEY TIED TO STATIONS "ORES", AND "USLO" OF THE NETWORK AS SHOWN ON THE "TIES TO CALIFORNIA COORDINATE SYSTEM" DIAGRAM ON SHEET 2.



FINAL MAP NO. 14,739

COUNTY OF SANTA BARBARA
SHEET 4 OF 9 SHEETS

P.N. 2064017239
October 2015



LEGEND

- 2 EASEMENT FOR PUBLIC MULTI-USE TRAIL AND RELATED PURPOSES DEDICATED TO COUNTY OF SANTA BARBARA PER THIS MAP.
 - 3 EASEMENT FOR PUBLIC UTILITIES AND FOR PUBLIC SANITARY SEWER PURPOSES DEDICATED TO LAGUNA COUNTY SANITATION DISTRICT PER THIS MAP.
 - 5 EASEMENT FOR FOR PUBLIC MULTI-USE TRAIL INGRESS AND EGRESS AND PUBLIC UTILITIES DEDICATED TO THE COUNTY OF SANTA BARBARA PER THIS MAP.
- NOTE: ALL LOT AREAS ARE GROSS UNLESS OTHERWISE NOTED
- * RADIAL TO 66' RADIUS KNUCKLE, NOT CENTERLINE
- N.S.F. NET SQUARE FEET
G.S.F. GROSS SQUARE FEET
- FOUND MONUMENT AS NOTED ON SHEET 3
 - SET 1/2" IRON PIPE WITH TAG STAMPED "PLS 9116"
 - SET LEAD & TACK WITH TAG STAMPED "PLS 9116" SET ON LOT LINE, ON TOP OF CURB, 18.25' FROM STREET CENTERLINE WHERE CURB IS CONCENTRIC WITH CENTERLINE
 - ⊗ SET SPIKE AND WASHER STAMPED "PLS 9116"
 - ▲ SET 2" IRON PIPE WITH 2" ALUMINUM CAP STAMPED "PLS 9116", IN MONUMENT WELL

RADIAL LINE TABLE	
LINE	DIRECTION
RAD1	S53°07'28"E
RAD2	S41°16'11"E
RAD3	N44°09'27"W

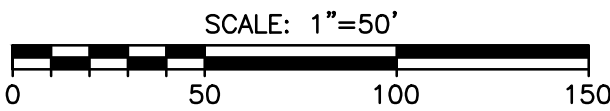
BASIS OF BEARINGS

BEARINGS SHOWN ON THIS MAP ARE BASED ON THE CALIFORNIA COORDINATE SYSTEM, NAD83, ZONE 5 GRID NAD83(1998), EPOCH 2004.0, DEFINED LOCALLY BY THE CALIFORNIA SPATIAL REFERENCE NETWORK OPERATED BY THE CALIFORNIA SPATIAL REFERENCE CENTER. THIS SURVEY TIED TO STATIONS "ORES", AND "USLO" OF THE NETWORK AS SHOWN ON THE "TIES TO CALIFORNIA COORDINATE SYSTEM" DIAGRAM ON SHEET 2.

CURVE TABLE			
CURVE	DELTA	RADIUS	LENGTH
C1	9°30'11"	80.00'	13.27'
C2	30°52'21"	66.00'	35.56'
C3	30°53'27"	66.00'	35.58'
C4	46°38'25"	66.00'	53.73'
C5	8°43'10"	90.00'	13.70'
C6	68°51'12"	78.00'	93.73'
C7	23°44'49"	272.00'	112.73'
C8	44°35'35"	78.00'	60.71'
C9	9°12'11"	90.00'	14.46'
C10	52°43'53"	66.00'	60.74'
C11	55°49'05"	66.00'	64.30'
C12	108°32'58"	66.00'	125.04'
C13	9°20'43"	90.00'	14.68'
C14	12°09'48"	328.00'	69.63'
C15	11°35'01"	328.00'	66.31'
C16	25°26'54"	50.00'	22.20'
C17	19°08'39"	50.00'	16.71'
C18	43°04'46"	50.00'	37.59'
C19	44°26'41"	50.00'	38.79'
C20	90°00'04"	50.00'	78.54'
C21	90°00'00"	50.00'	78.54'

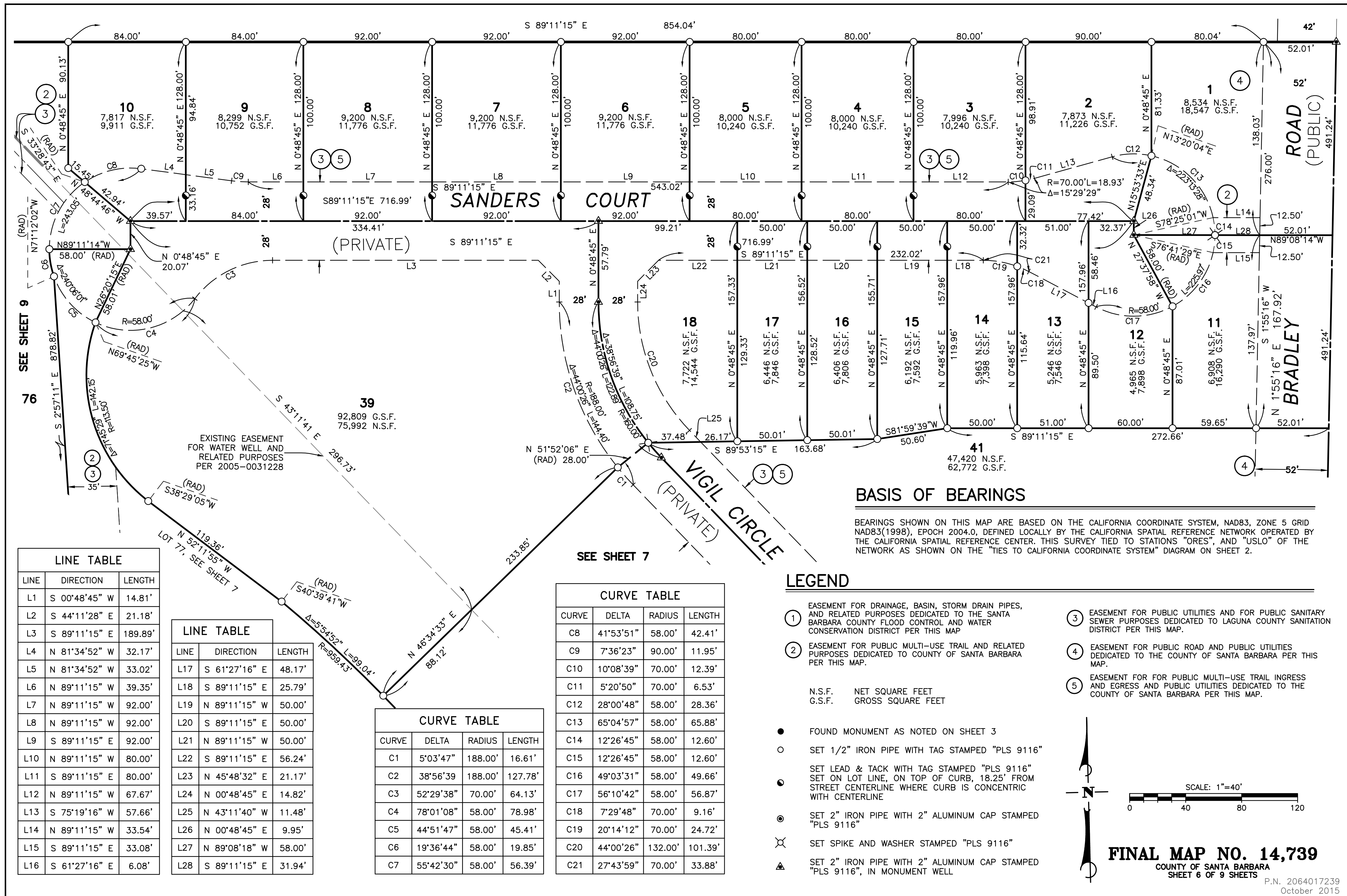
LINE TABLE		
LINE	DIRECTION	LENGTH
L1	N 01°41'56" E	84.41'
L2	N 01°41'56" E	74.00'
L3	N 01°41'56" E	74.00'
L4	N 01°41'56" E	74.00'
L5	N 01°41'56" E	74.00'
L6	N 01°41'56" E	74.00'
L7	S 01°41'56" W	74.00'
L8	N 01°41'56" E	47.77'
L9	N 07°48'15" W	13.21'
L10	N 07°48'15" W	38.21'
L11	N 07°48'15" W	51.41'
L12	S 79°24'01" E	50.00'
L13	S 88°18'04" E	6.97'
L14	S 19°26'53" E	19.79'
L15	S 43°11'41" E	336.17'
L16	S 01°23'52" W	19.33'
L17	S 07°48'19" E	33.87'
L18	N 79°15'21" W	9.25'
L19	N 79°15'21" W	39.59'
L20	N 88°36'04" W	28.32'
L21	S 88°36'04" E	80.00'
L22	N 88°36'04" W	80.00'

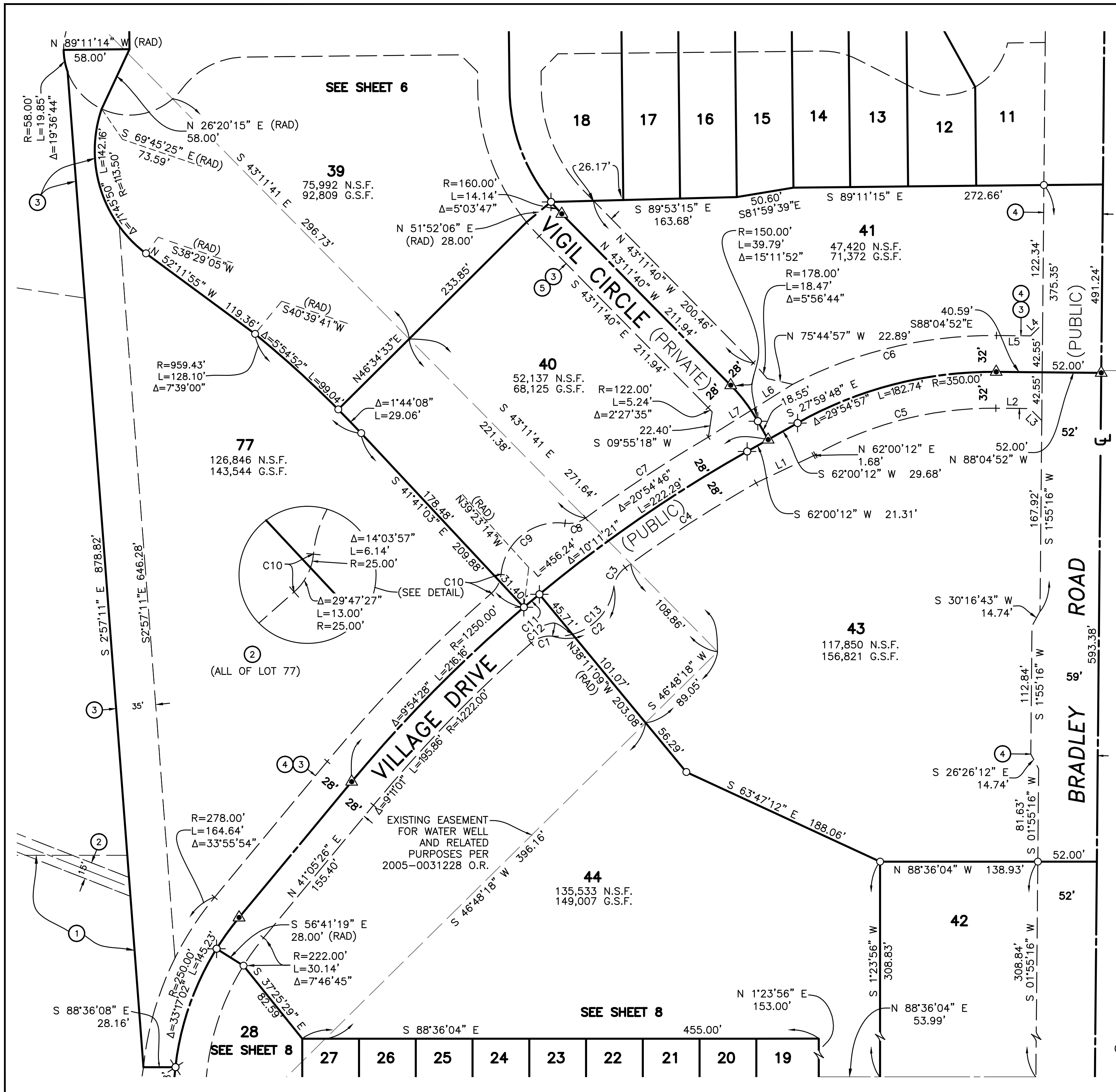
LINE TABLE		
LINE	DIRECTION	LENGTH
L23	S 88°36'04" E	80.00'
L24	N 88°36'04" W	66.57'
L25	N 46°32'56" E	24.10'
L26	S 01°41'56" W	83.00'
L27	N 43°27'04" W	23.98'
L28	S 01°41'56" W	68.58'
L29	N 01°41'56" E	74.00'
L30	S 01°41'56" W	74.00'
L31	N 01°41'56" E	74.00'
L32	S 01°41'56" W	74.00'
L33	N 01°41'56" E	91.50'
L34	S 46°44'04" W	31.13'
L35	S 88°18'04" E	57.70'
L36	S 53°52'28" E	24.88'
L37	S 19°26'53" E	19.79'
L38	S 43°11'41" E	44.11'
L39	S 43°11'41" E	75.00'
L40	S 43°11'41" E	75.00'
L41	S 43°11'41" E	140.73'
L42	S 22°31'11" E	17.94'
L43	S 01°23'52" W	76.60'
L44	N 46°23'54" E	24.04'
L45	N 88°36'04" W	72.00'
L46	S 88°36'04" E	75.00'
L47	N 88°36'04" W	75.00'
L48	S 88°36'04" E	76.00'
L49	S 88°36'04" E	93.00'



EXISTING EASEMENT FOR WATER WELL AND RELATED PURPOSES PER 2005-0031228 SEE SHEET 4 FOR DIMENSIONS

FINAL MAP NO. 14,739
COUNTY OF SANTA BARBARA
SHEET 5 OF 9 SHEETS





LINE TABLE		
LINE	DIRECTION	LENGTH
L1	N 66°04'13" E	56.14'
L2	S 88°04'44" E	30.03'
L3	S 43°04'44" E	14.92'
L4	N 46°55'16" E	14.92'
L5	S 88°04'44" E	30.03'
L6	N 59°23'09" E	43.10'
L7	N 59°23'09" E	44.39'

CURVE TABLE			
CURVE	DELTA	RADIUS	LENGTH
C1	46°17'31"	25.00'	20.20'
C2	87°36'45"	50.00'	76.46'
C3	46°17'31"	25.00'	20.20'
C4	6°26'38"	1222.00'	137.44'
C5	29°55'04"	318.00'	166.05'
C6	27°58'29"	382.00'	186.51'
C7	5°48'33"	1278.00'	129.58'
C8	43°51'24"	25.00'	19.14'
C9	92°28'43"	50.00'	80.70'
C10	43°51'24"	25.00'	19.14'
C11	0°48'56"	1250.00'	17.79'
C12	20°22'48"	50.00'	17.78'
C13	67°13'58"	50.00'	58.67'

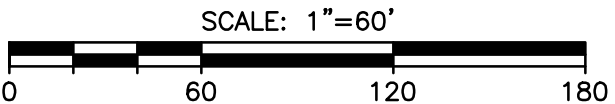
LEGEND

- ② EASEMENT FOR PUBLIC MULTI-USE TRAIL AND RELATED PURPOSES DEDICATED TO COUNTY OF SANTA BARBARA PER THIS MAP.
- ③ EASEMENT FOR PUBLIC UTILITIES AND FOR PUBLIC SANITARY SEWER PURPOSES DEDICATED TO LAGUNA COUNTY SANITATION DISTRICT PER THIS MAP.
- ④ EASEMENT FOR PUBLIC ROAD AND PUBLIC UTILITIES DEDICATED TO THE COUNTY OF SANTA BARBARA PER THIS MAP.
- ⑤ EASEMENT FOR FOR PUBLIC MULTI-USE TRAIL INGRESS AND EGRESS AND PUBLIC UTILITIES DEDICATED TO THE COUNTY OF SANTA BARBARA PER THIS MAP.
- FOUND MONUMENT AS NOTED
- SET 1/2" IRON PIPE WITH TAG STAMPED "PLS 9116"
- SET LEAD & TACK WITH TAG STAMPED "PLS 9116" SET ON LOT LINE, ON TOP OF CURB, 18.25' FROM STREET CENTERLINE WHERE CURB IS CONCENTRIC WITH CENTERLINE
- ⊗ SET SPIKE AND WASHER STAMPED "PLS 9116"
- ▲ SET 2" IRON PIPE WITH 2" ALUMINUM CAP STAMPED "PLS 9116", IN MONUMENT WELL

N.S.F. NET SQUARE FEET
G.S.F. GROSS SQUARE FEET

BASIS OF BEARINGS

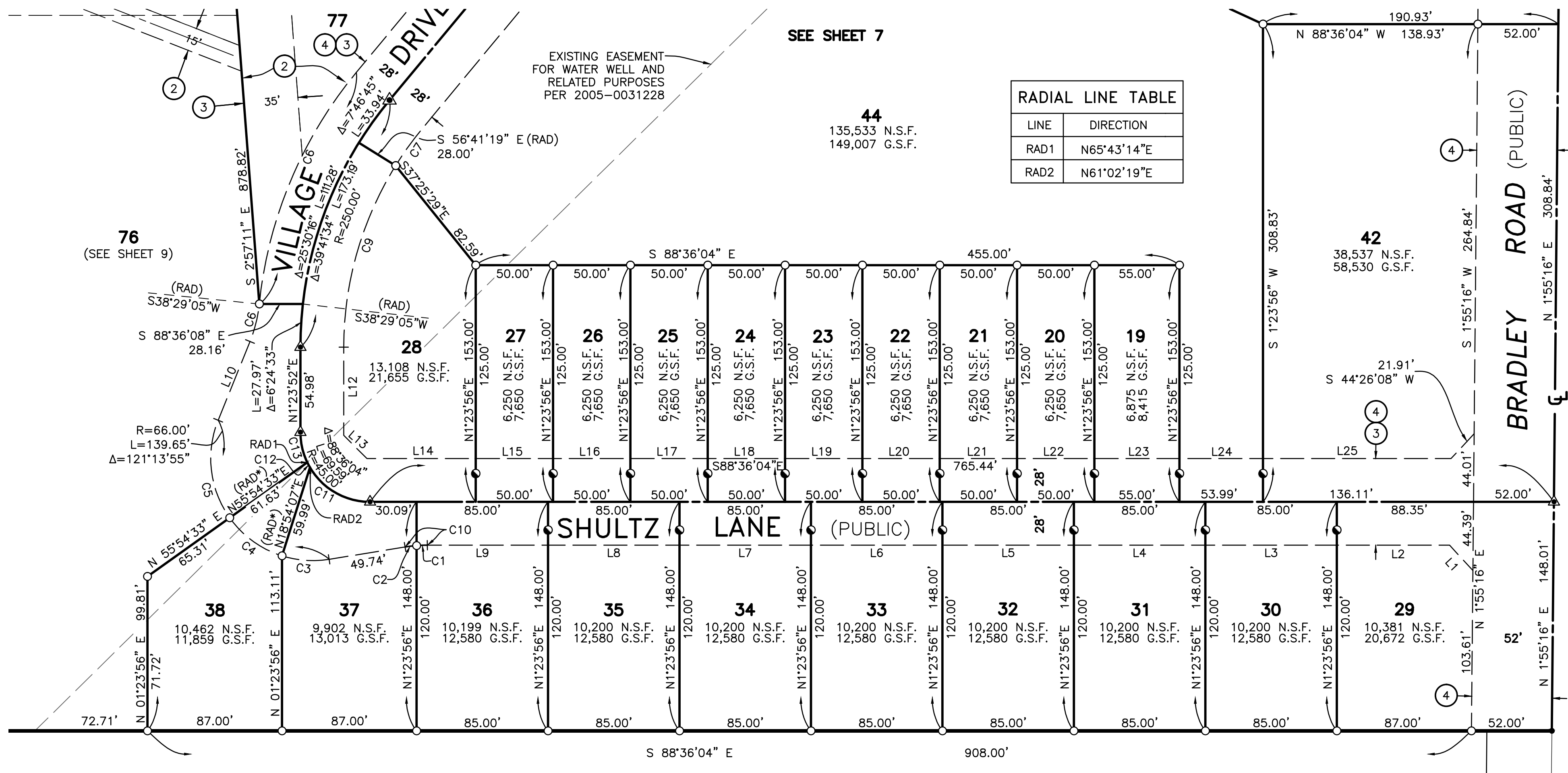
BEARINGS SHOWN ON THIS MAP ARE BASED ON THE CALIFORNIA COORDINATE SYSTEM, NAD83, ZONE 5 GRID NAD83(1998), EPOCH 2004.0, DEFINED LOCALLY BY THE CALIFORNIA SPATIAL REFERENCE NETWORK OPERATED BY THE CALIFORNIA SPATIAL REFERENCE CENTER. THIS SURVEY TIED TO STATIONS "ORES", AND "USLO" OF THE NETWORK AS SHOWN ON THE "TIES TO CALIFORNIA COORDINATE SYSTEM" DIAGRAM ON SHEET 2.



FINAL MAP NO. 14,739

COUNTY OF SANTA BARBARA
SHEET 7 OF 9 SHEETS

P.N. 2064017239
October 2015



RADIAL LINE TABLE	
LINE	DIRECTION
RAD1	N65°43'14"E
RAD2	N61°02'19"E

CURVE TABLE			
CURVE	DELTA	RADIUS	LENGTH
C1	4°26'19"	90.00'	6.97'
C2	4°45'52"	90.00'	7.48'
C3	26°45'45"	66.00'	30.83'
C4	36°57'03"	66.00'	42.56'
C5	57°31'07"	66.00'	66.26'
C6	33°55'54"	278.00'	164.64'
C7	16°16'08"	88.00'	24.99'
C8	7°46'45"	222.00'	30.14'
C9	31°54'49"	222.00'	123.65'
C10	9°12'11"	90.00'	14.46'
C11	25°40'38"	45.00'	20.17'
C12	4°40'54"	45.00'	3.68'
C13	59°38'23"	45.00'	46.84'

LINE TABLE		
LINE	DIRECTION	LENGTH
L1	S 41°09'32" E	22.25'
L2	S 88°36'04" E	72.89'
L3	S 88°36'04" E	85.00'
L4	S 88°36'04" E	85.00'
L5	S 88°36'04" E	85.00'
L6	S 88°36'04" E	85.00'
L7	S 88°36'04" E	85.00'
L8	S 88°36'04" E	85.00'
L9	S 88°36'04" E	78.03'
L10	S 82°11'45 W	49.74'
L11	S 23°25'40" W	54.93'
L12	N 01°23'49" E	56.98'
L13	N 43°36'07" W	21.21'

LINE TABLE		
LINE	DIRECTION	LENGTH
L14	N 88°36'04" W	70.33'
L15	S 88°36'04" E	50.00'
L16	N 88°36'04" W	50.00'
L17	S 88°36'04" E	50.00'
L18	N 88°36'04" W	50.00'
L19	S 88°36'04" E	50.00'
L20	N 88°36'04" W	50.00'
L21	S 88°36'04" E	50.00'
L22	N 88°36'04" W	50.00'
L23	S 88°36'04" E	55.00'
L24	S 88°36'04" E	53.99'
L25	N 88°36'04" W	121.56'
L25	S 44°26'08" W	21.91'

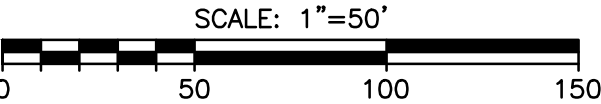
LEGEND

- ② EASEMENT FOR PUBLIC MULTI-USE TRAIL AND RELATED PURPOSES DEDICATED TO COUNTY OF SANTA BARBARA PER THIS MAP.
- ③ EASEMENT FOR PUBLIC UTILITIES AND FOR PUBLIC SANITARY SEWER PURPOSES DEDICATED TO LAGUNA COUNTY SANITATION DISTRICT PER THIS MAP.
- FOUND MONUMENT AS NOTED ON SHEET 3
- SET 1/2" IRON PIPE WITH TAG STAMPED "PLS 9116"
- SET LEAD & TACK WITH TAG STAMPED "PLS 9116" SET ON LOT LINE, ON TOP OF CURB, 18.25' FROM STREET CENTERLINE WHERE CURB IS CONCENTRIC WITH CENTERLINE
- ⊗ SET SPIKE AND WASHER STAMPED "PLS 9116"
- ▲ SET 2" IRON PIPE WITH 2" ALUMINUM CAP STAMPED "PLS 9116", IN MONUMENT WELL

- ④ EASEMENT FOR PUBLIC ROAD AND PUBLIC UTILITY PURPOSES DEDICATED TO THE COUNTY OF SANTA BARBARA PER THIS MAP.

BASIS OF BEARINGS

BEARINGS SHOWN ON THIS MAP ARE BASED ON THE CALIFORNIA COORDINATE SYSTEM, NAD83, ZONE 5 GRID NAD83(1998), EPOCH 2004.0, DEFINED LOCALLY BY THE CALIFORNIA SPATIAL REFERENCE NETWORK OPERATED BY THE CALIFORNIA SPATIAL REFERENCE CENTER. THIS SURVEY TIED TO STATIONS "ORES", AND "USLO" OF THE NETWORK AS SHOWN ON THE "TIES TO CALIFORNIA COORDINATE SYSTEM" DIAGRAM ON SHEET 2.



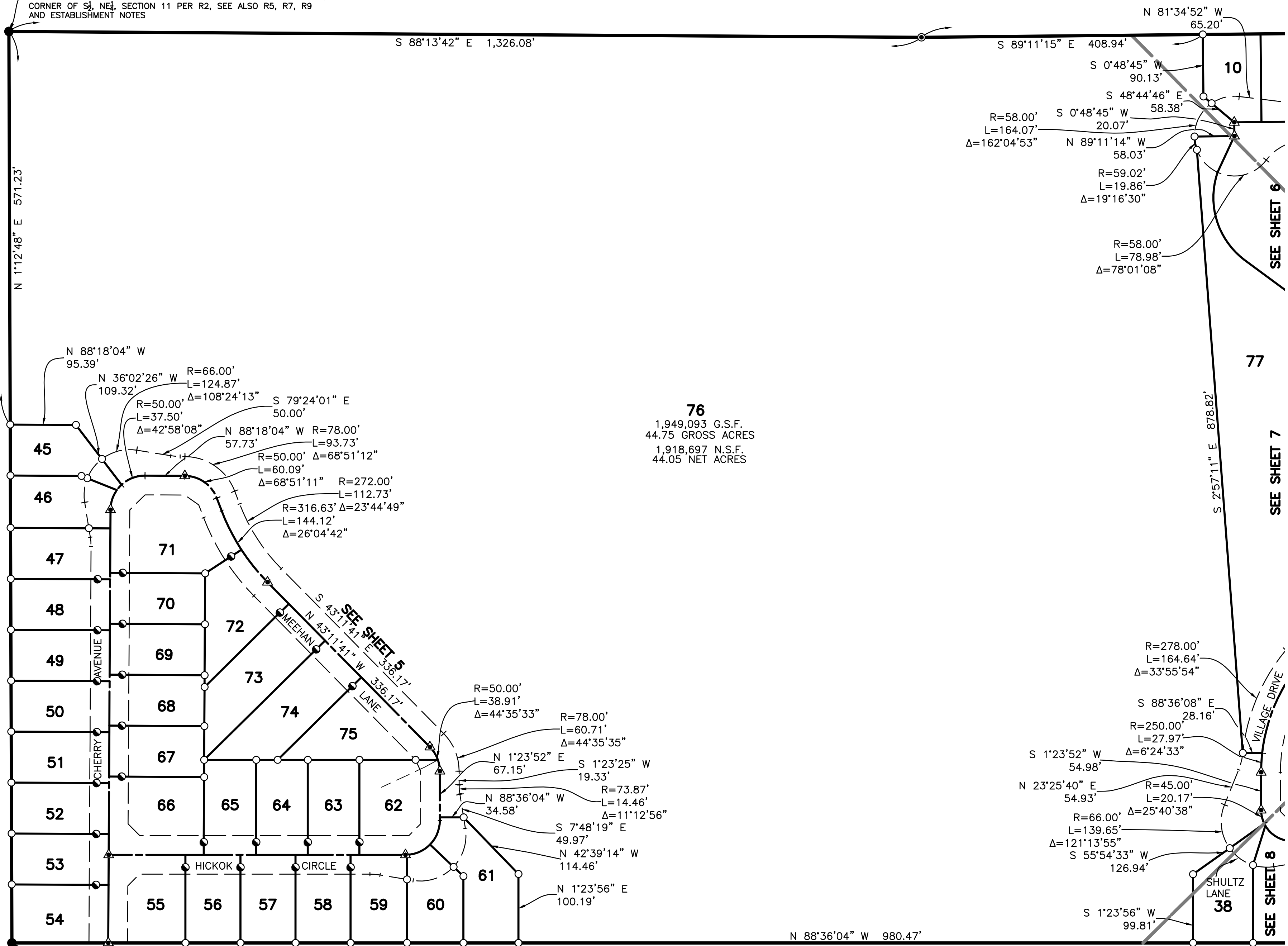
FINAL MAP NO. 14,739
COUNTY OF SANTA BARBARA
SHEET 8 OF 9 SHEETS

P.N. 2064017239
October 2015

* RADIAL TO 66' RADIUS KNUCKLE, NOT CENTERLINE

N.S.F. NET SQUARE FEET
G.S.F. GROSS SQUARE FEET

FOUND 3/4" IRON PIPE AND TAG MARKED "R.E. 2928" ACCEPTED AS N/W CORNER OF S4, NE1/4, SECTION 11 PER R2, SEE ALSO R5, R7, R9 AND ESTABLISHMENT NOTES



FOUND 2" BRASS CAP ACCEPTED AS CENTER SECTION 11 PER R2. SEE ALSO R3, R5, R6, R8 & R9

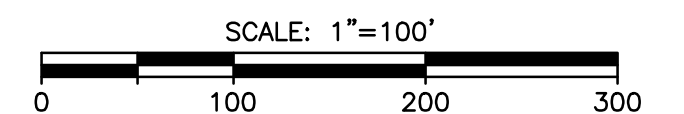
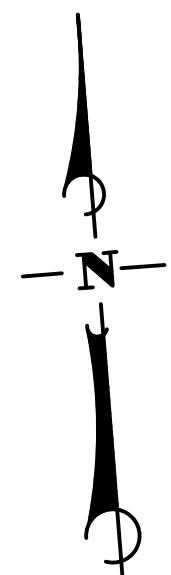
LEGEND

- FOUND MONUMENT AS NOTED ON SHEET 3
- SET 1/2" IRON PIPE WITH TAG STAMPED "PLS 9116"
- SET LEAD & TACK WITH TAG STAMPED "PLS 9116" ON TOP OF CURB, 18.25' FROM STREET CENTERLINE
- ⊙ SET 2" IRON PIPE WITH 2" ALUMINUM CAP STAMPED "PLS 9116"
- ⊗ SET SPIKE AND WASHER STAMPED "PLS 9116"
- ▲ SET 2" IRON PIPE WITH 2" ALUMINUM CAP STAMPED "PLS 9116", IN MONUMENT WELL

N.S.F. NET SQUARE FEET
G.S.F. GROSS SQUARE FEET

BASIS OF BEARINGS

BEARINGS SHOWN ON THIS MAP ARE BASED ON THE CALIFORNIA COORDINATE SYSTEM, NAD83, ZONE 5 GRID NAD83(1998), EPOCH 2004.0, DEFINED LOCALLY BY THE CALIFORNIA SPATIAL REFERENCE NETWORK OPERATED BY THE CALIFORNIA SPATIAL REFERENCE CENTER. THIS SURVEY TIED TO STATIONS "ORES", AND "USLO" OF THE NETWORK AS SHOWN ON THE "TIES TO CALIFORNIA COORDINATE SYSTEM" DIAGRAM ON SHEET 2.



FINAL MAP NO. 14,739

COUNTY OF SANTA BARBARA
SHEET 9 OF 9 SHEETS

P.N. 2064017239
October 2015