



Oil & Gas Briefing

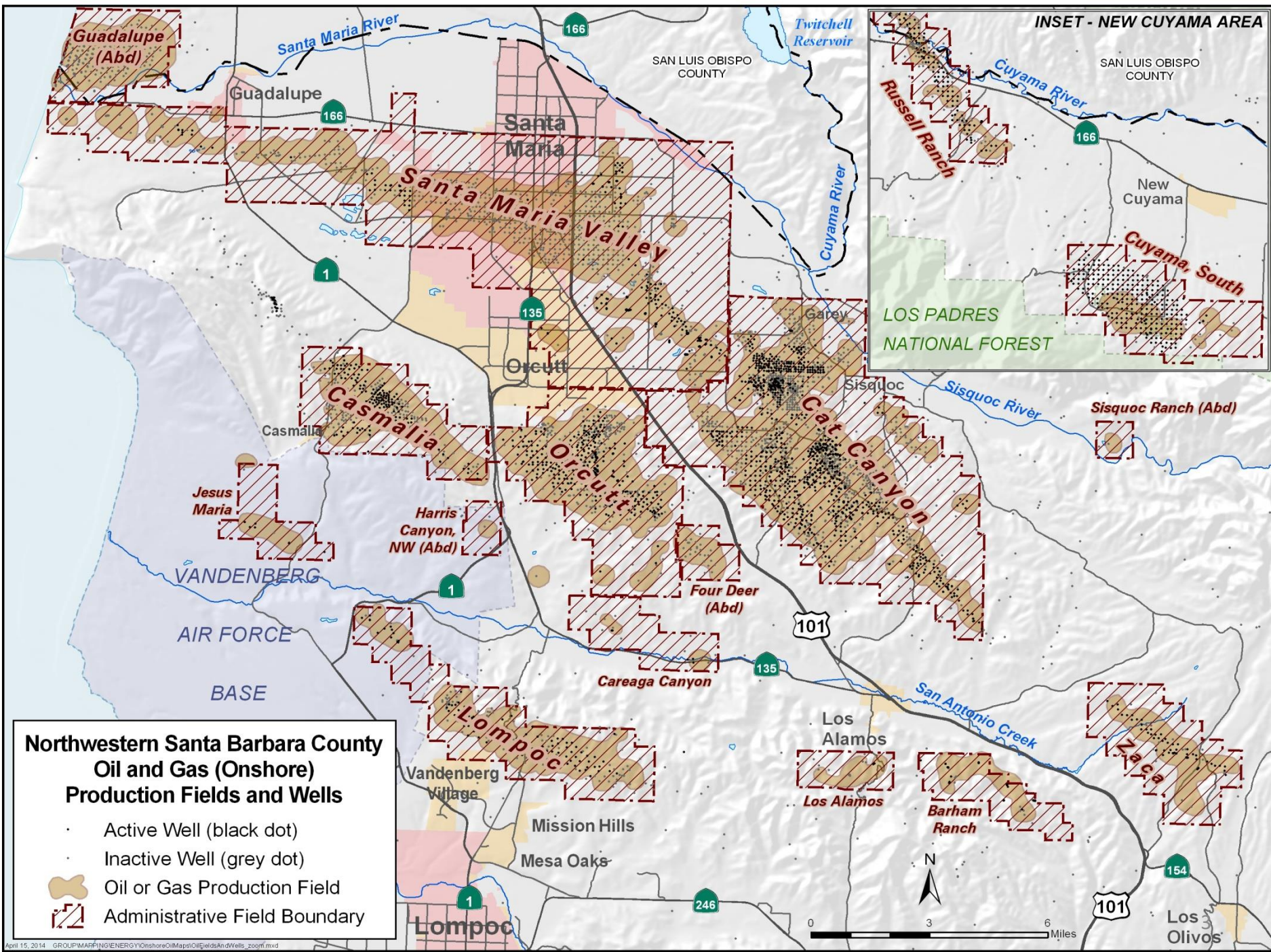
Santa Barbara County Board of Supervisors

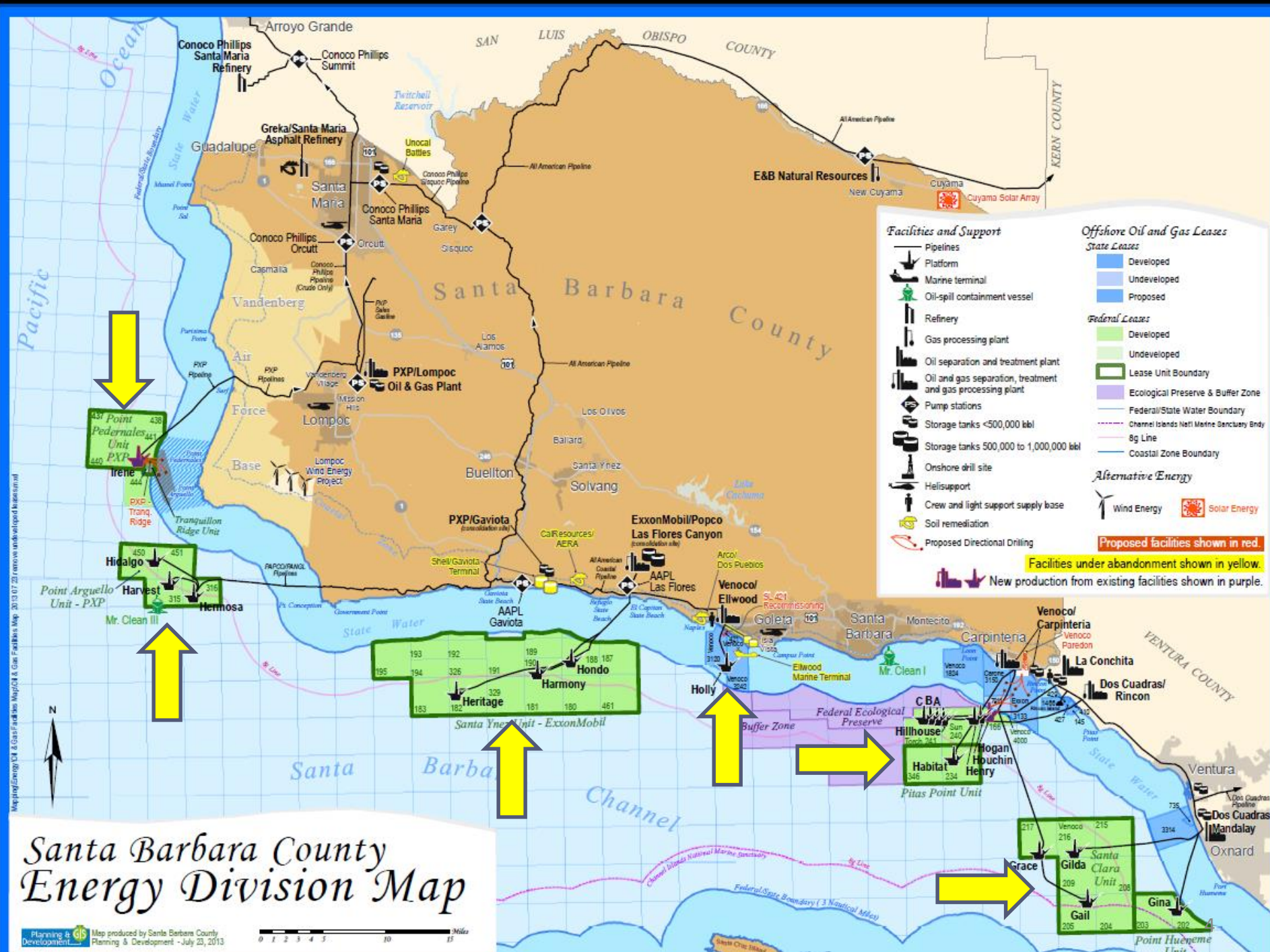
Energy & Minerals Division
Planning & Development
December 5, 2017

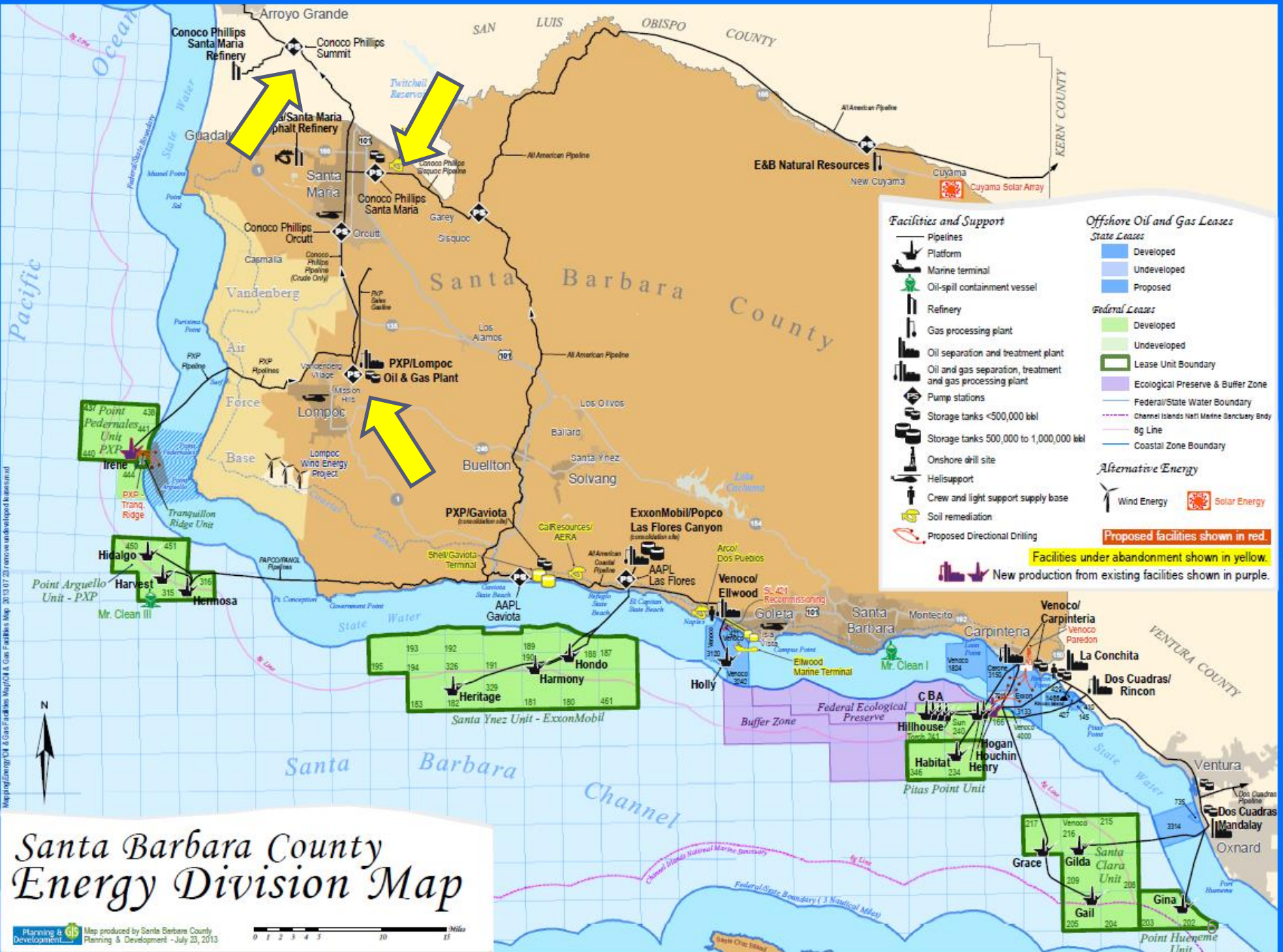
Overview

Today's briefing on:

- Onshore Oil & Gas Development
- Offshore Oil & Gas Development
- Compliance & Inspection Results
- Outer Continental Shelf Leasing Program







Facilities and Support

- Pipelines
- Platform
- Marine terminal
- Oil-spill containment vessel
- Refinery
- Gas processing plant
- Oil separation and treatment plant
- Oil and gas separation, treatment and gas processing plant
- Pump stations
- Storage tanks <500,000 bbl
- Storage tanks 500,000 to 1,000,000 bbl
- Onshore drill site
- Helisupport
- Crew and light support supply base
- Soil remediation
- Proposed Directional Drilling

Offshore Oil and Gas Leases

- #### State Leases
- Developed
 - Undeveloped
 - Proposed
- #### Federal Leases
- Developed
 - Undeveloped
 - Lease Unit Boundary
 - Ecological Preserve & Buffer Zone
 - Federal/State Water Boundary
 - Channel Islands Natl Marine Sanctuary Bndy
 - Bg Line
 - Coastal Zone Boundary

Alternative Energy

- Wind Energy
- Solar Energy

Proposed facilities shown in red.

Facilities under abandonment shown in yellow.

New production from existing facilities shown in purple.

Santa Barbara County Energy Division Map

Petroleum Unit Inspection Results 2015 - 2017

- County Petroleum Staff inspects over 2,450 existing wells and 125 related facilities annually
- 161 violations issued in almost 3 year period, 145 directed toward a single operator (Greka)
- High of 86 violations in 2017
- 35 of 36 fines levied against one operator

Fire Department Inspection Results 2015-2017

- Approximately 125 facilities inspected annually
- 676 violations issued over the almost 3 year period
- 342 violations given to a single operator (Greka)
- High of 381 violations in 2016
- Most violations considered minor in nature and corrected in a timely manner

APCD Inspection Results 2015-2017

- Approximately 70 stationary sources inspected
- 178 violations issued over the almost 3 year period
- 82 of 178 violations issued to a single operator
- High of 71 violations issued in 2016

Spill Statistics 2015 - 2017

- 18 spills reported in the almost 3 year period
- Spills did not impact active waterways
- 2017 had highest spill volumes
 - 10 barrels of crude oil and 200 barrels of produced water
- Spills historically trending downward

Operational Status – Plains Pipeline

- Lines 901 & 903 remain empty and shut in
- New application to construct new, smaller diameter replacement lines
- Old lines would be removed/abandoned in place
- Application is currently incomplete

Operational Status - Venoco

- Platform Holly
 - wells to be plugged and abandoned
 - Platform to be removed
- Ellwood Onshore Facility will facilitate Platform Holly work and then be decommissioned
- Ellwood Marine Terminal to be removed
- Ellwood Pipeline - Line 96
 - Oil has been removed, currently filled with water
 - Pipeline to be emptied and abandoned

Proposed Projects - Onshore

INSET - NEW CUYAMA AREA

SAN LUIS OBISPO
COUNTY

AERA

296 wells

EIR in Progress

ERG Resources

233 wells

EIR in Progress

PetroRock

231 wells

Incomplete

Northwestern Santa Barbara County Oil and Gas (Onshore) Production Fields and Wells

- Active Well (black dot)
- Inactive Well (grey dot)
- Oil or Gas Production Field
- Administrative Field Boundary

Federal Outer Continental Shelf Leasing Program

- Proposed program for 2019 – 2024 would replace the current 2017– 2022 program
- Multi-step federal process, numerous opportunities for public input
- Next step is to seek public comment on draft proposed leasing program

Thank You