



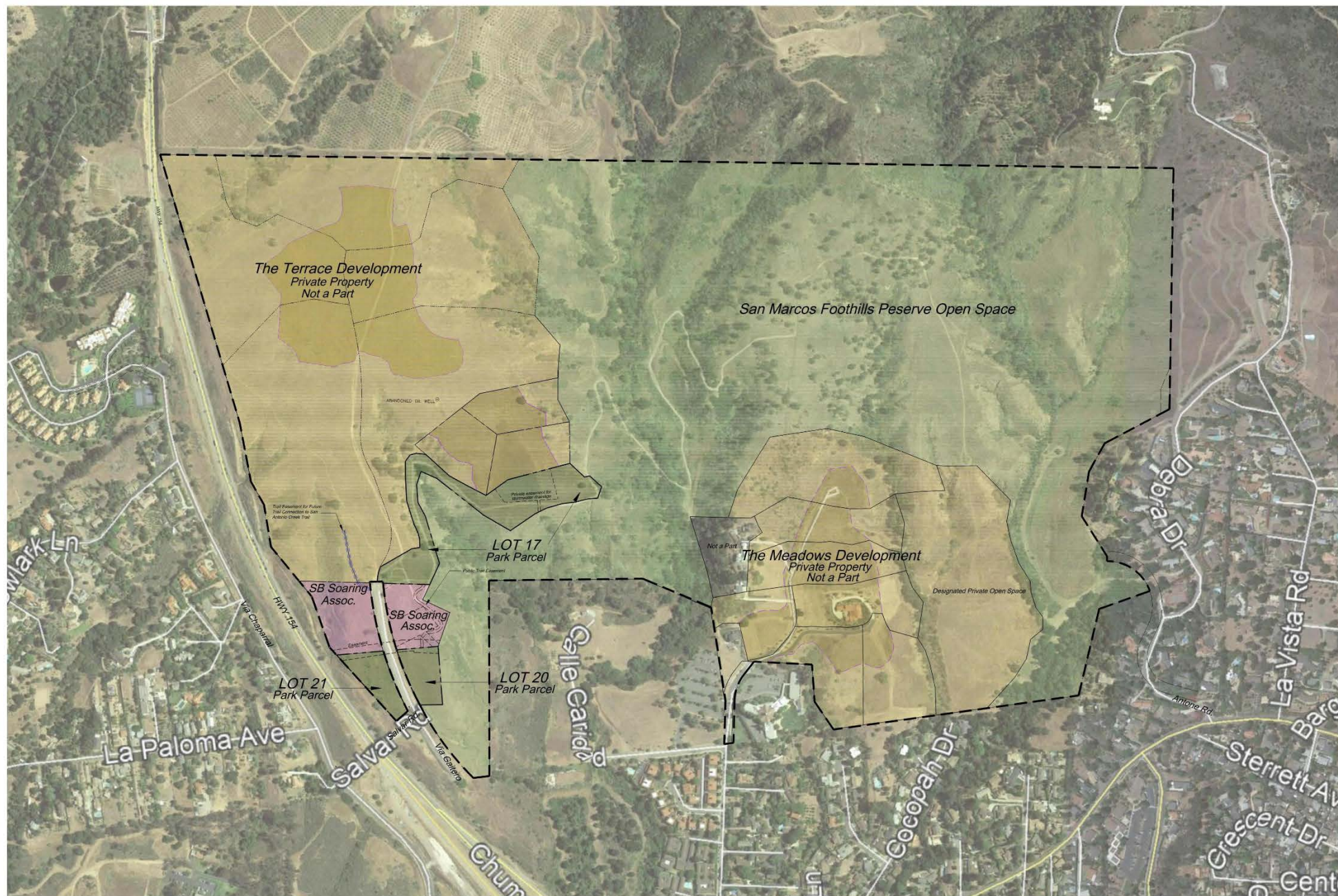
San Marcos Park Master Plan

Arcadia Studio, Inc.

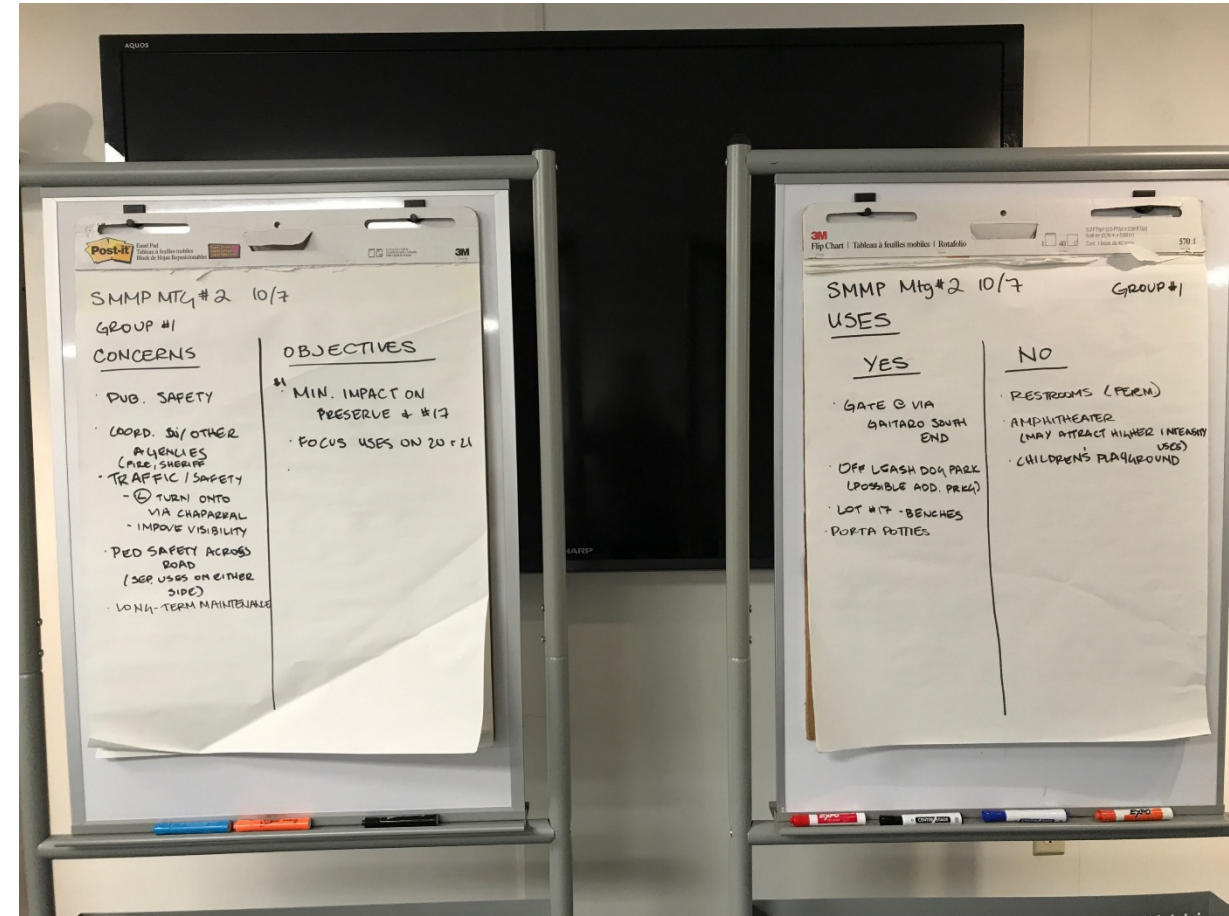
Suzanne Elledge Planning & Permitting Services

Flowers & Associates

Storrer Environmental Services



Community Outreach – Workshops



- 4 public workshops, including one at Park site
- Received valued feedback from attending community members
- Repeat participants at multiple workshops
- Q&A, group discussion, concerns, graphed/mapped Park objectives, pros/cons to Park uses

Community Outreach – Site Walk



- Design team, District Two representatives, and community members talking a walk on the dedicated Park parcels to provide site orientation
- Location: along Via Gaitero North of Cathedral Oaks Road
- Approximately 10 Acres total (Lots: 17, 20 & 21)





- COASTAL SCRUB RESTORATION AREAS
- | | |
|---|----------------------|
| <i>Adonis glabra</i> | Deerweed |
| <i>Artemisia californica</i> | California sagebrush |
| <i>Baccharis pilularis</i> var. <i>consanguinea</i> | Coyote brush |
| <i>Elymus condensatus</i> | Giant wild rye |
| <i>Encelia californica</i> | Bush sunflower |
| <i>Eriophyllum confertiflorum</i> | Golden yarrow |
| <i>Heteromeles arbutifolia</i> | Toyon |
| <i>Rhus integrifolia</i> | Lemonade berry |
| <i>Salvia mellifera</i> | Black sage |
| <i>Salvia leucophylla</i> | Purple sage |



Lots 20 & 21

Interpretive Trail



Natural Benches



Fencing



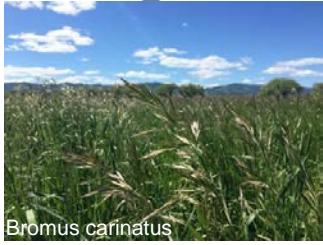
Pathways



Signage



Native Grassland



Riparian Coast Live Oak Woodland



Coastal Scrub

