

Laguna County Sanitation District

FY 2018 – 2019
Rates and Fees



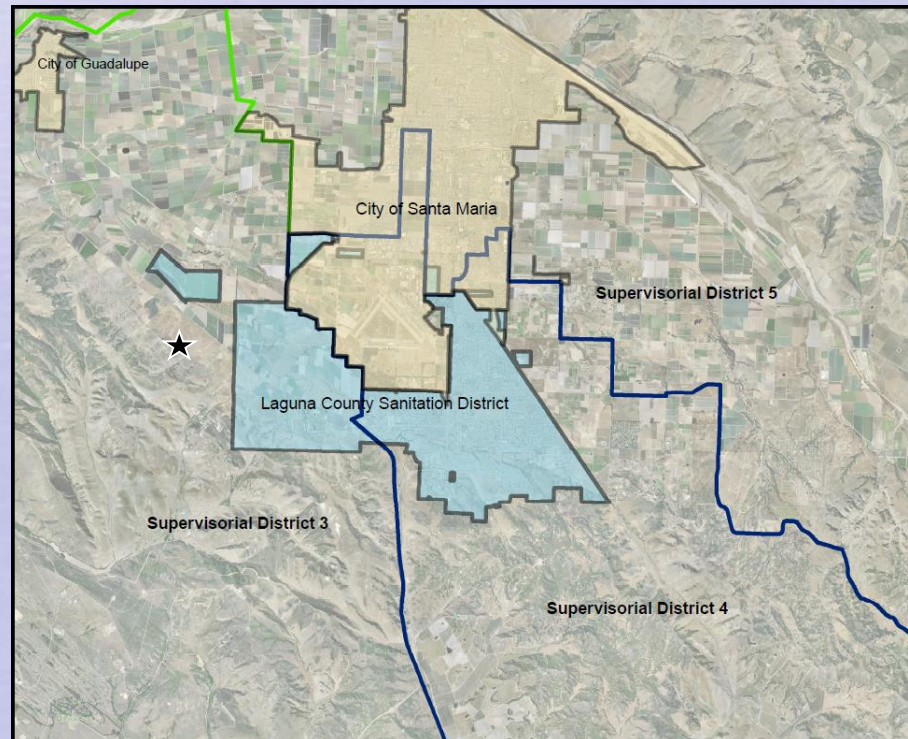
Laguna County Sanitation District



- Dependent special district created in 1958
- Provides wastewater services to Orcutt and unincorporated Santa Maria area
- Regulated by:
 - RWQCB Order R3-2011-0217 (plant)
 - EPA (injection well)
 - SWRCB 2006-0003 (sewer system)
 - SWRCB – DDW (laboratory)
 - SWRCB (operator licensing)
 - SWRCB 2014-0057-DWQ (industrial)
 - APCD (air emissions)
- Conserves and protects resources

Annual Rates and Fees Ordinance

- Public noticing pursuant to Prop 218
 - Mailer to 12,000 customers on 10,000 parcels
- Hearing date published pursuant to Government Code in Santa Maria Times
- Open house
- A small number of written responses (less than 1%)



Sewer Charge Rates

- Pay for annual operation, maintenance, replacement, and reserves
- Collected on the tax roll
- 2.8% increase proposed for FY 2018-2019
 - Based on CPI
 - Prior increases for necessary plant upgrades as identified in the Master Plan presented to the Board on October 11, 2011

Master Plan



- Assessed condition of plant and looked at future needs
- Reviewed regulatory criteria
- Compared treatment and discharge alternatives
- Defined Phase 1 (replace existing) and Phase 2 (future capacity) conditions
- Evaluated costs and revenue needs

Proposed Sewer Charge

Residential unit equivalent (RUE) rate

Proposed annual rate	\$1,009.49
<u>Last year's rate</u>	<u>\$ 981.99</u>
Rate increase/year	\$ 27.50

Equivalent to \$2.29/month (monthly rate of 84.12)

Multiple Family Residential	= \$819.54/year
School	= \$52.37 per cap/year
Commercial	= Based on flow and load

How LCSD Compares Countywide

<u>Treatment Level</u>	<u>Agency</u>	<u>Monthly Rate</u>	<u>Inc.</u>
Tertiary	Summerland	\$122.05	3.5%
	Lompoc	\$ 92.80	
	Laguna	\$ 84.12	2.8%
	Vandenberg Village	\$ 75.67	
Secondary	Montecito	\$136.93*	7.2%
	Santa Ynez	\$ 88.76*	3.7%
	CSA 12 Mission Canyon	\$ 79.31	6.0%
	Los Alamos	\$ 70.68*	5.0%
	Cuyama	\$ 66.00	
	Carpinteria	\$ 65.54*	4.0%
	Mission Hills	\$ 55.75	8.0%
	Santa Barbara	\$ 53.76	6.0%
	Guadalupe	\$ 50.09	2.8%
	Goleta West Sanitary	\$ 47.35*	9.6%
	Goleta Sanitary	\$ 43.49*	2.8%
	Solvang	\$ 35.24	
	Buellton	\$ 30.45	8.3%
	Santa Maria	\$ 21.17	5.0%
	Average	\$ 67.73	

* These rates include estimated property tax contributions.

Total Water Cost Comparison

<u>Agency</u>	<u>Water/Mo</u>	<u>Water and Sewer/Mo</u>
CSA 12 Mission Canyon + Santa Barbara	\$157.83	\$237.14
Montecito + Montecito Water	\$ 98.59	\$235.52
Summerland + Montecito Water	\$ 98.59	\$220.64
Santa Ynez + Santa Ynez RWCD 1	\$ 86.86	\$175.62
Santa Barbara	\$121.41	\$175.17
Lompoc	\$ 79.36	\$172.16
Goleta West Sanitary + Goleta Water	\$111.07	\$158.42
Goleta Sanitary + Goleta Water	\$111.07	\$154.56
Cuyama	\$ 84.10	\$150.10
Carpinteria + Carpinteria Valley Water	\$ 83.50	\$149.04
Solvang	\$109.93	\$145.17
Laguna + Golden State Water	\$ 52.98	\$137.10
Mission Hills	\$ 62.94	\$118.69
Vandenberg Village	\$ 35.34	\$111.01
Los Alamos	\$ 37.59	\$108.27
Santa Maria	\$ 76.12	\$ 97.29
Guadalupe	\$ 42.69	\$ 92.78
Buellton	\$ 60.94	\$ 91.39
Average		\$151.67

Developer Impact Fees



- Paid by development for sewer system equity buy-in
 - Trunk line fees fund collection system improvements
 - Connection fees fund treatment and disposal improvements

Developer Impact Fees

- Fees adjusted by indices pursuant to ordinances and agreements
- Connection fee (3.3%) per RUE \$7,457
- Trunk Line Fees
 - Dutard trunk line (3.3%) per RUE \$1,058
 - Bradley trunk line (4.5%) per RUE \$2,546

Recommendations

- Adopt ordinance setting the rates and fees for FY 2018-2019

