

JULY 10, 2018

JUVENILE DATA MINING PROJECT



SANTA BARBARA COUNTY
PROBATION DEPARTMENT

Background

- Renew 22 Initiative.
- Statewide, the number of youth in the juvenile probation system is down 42% since 2013.
- Statewide, the number of bookings into juvenile halls has decreased 14% statewide since 2015.



Project Phases

Comparative Data Collection

Culling data from our comparison counties to understand our local trends.



Strategic Planning

In collaboration with our justice partners, identifying strategies to positively impact the trends.

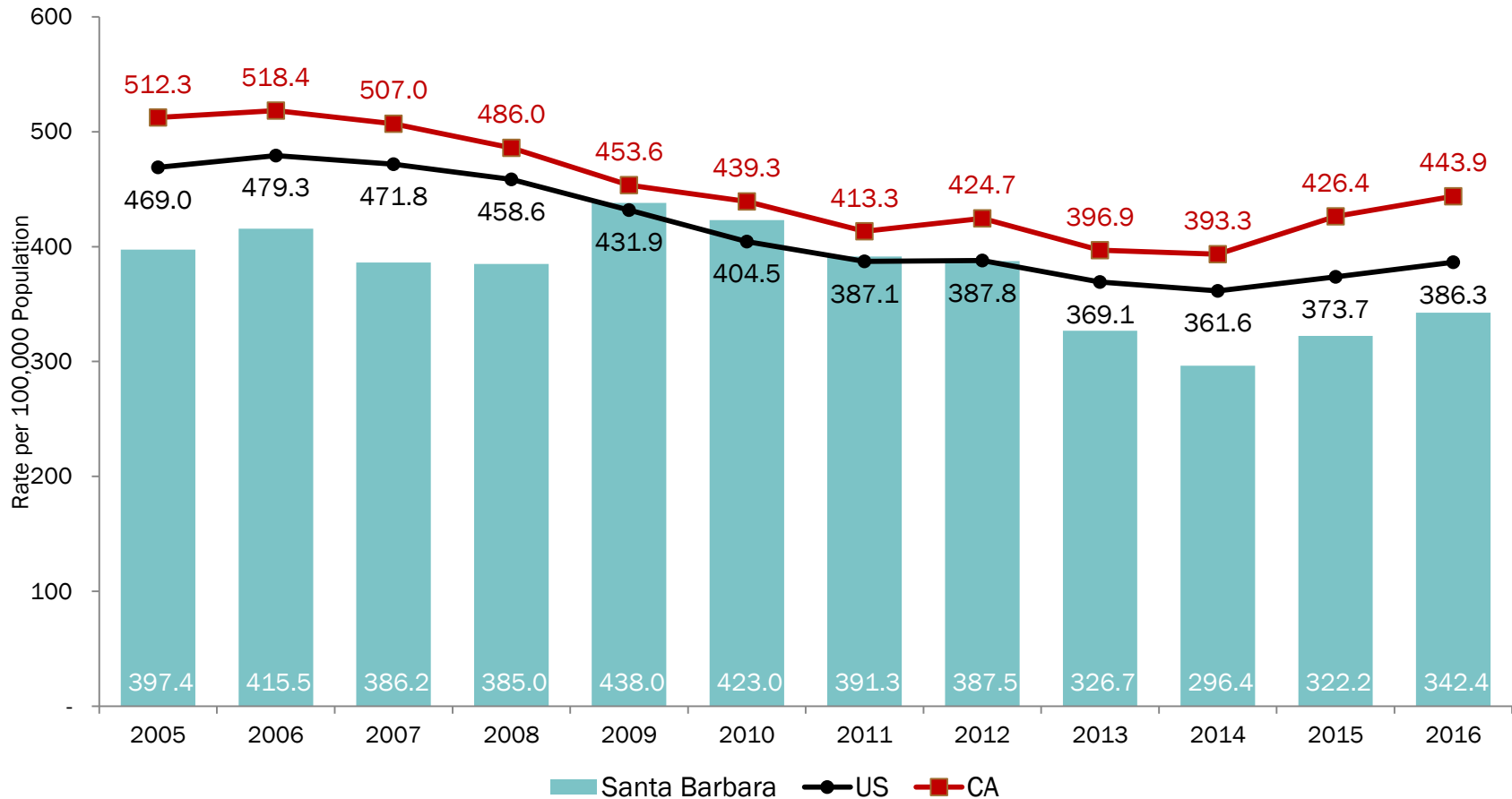
Data Mining Analysis

Reviewing each file to explore the drivers of local trends.

Exploring data intersections to identify opportunities to inform our practice.

Violent Crime Rate

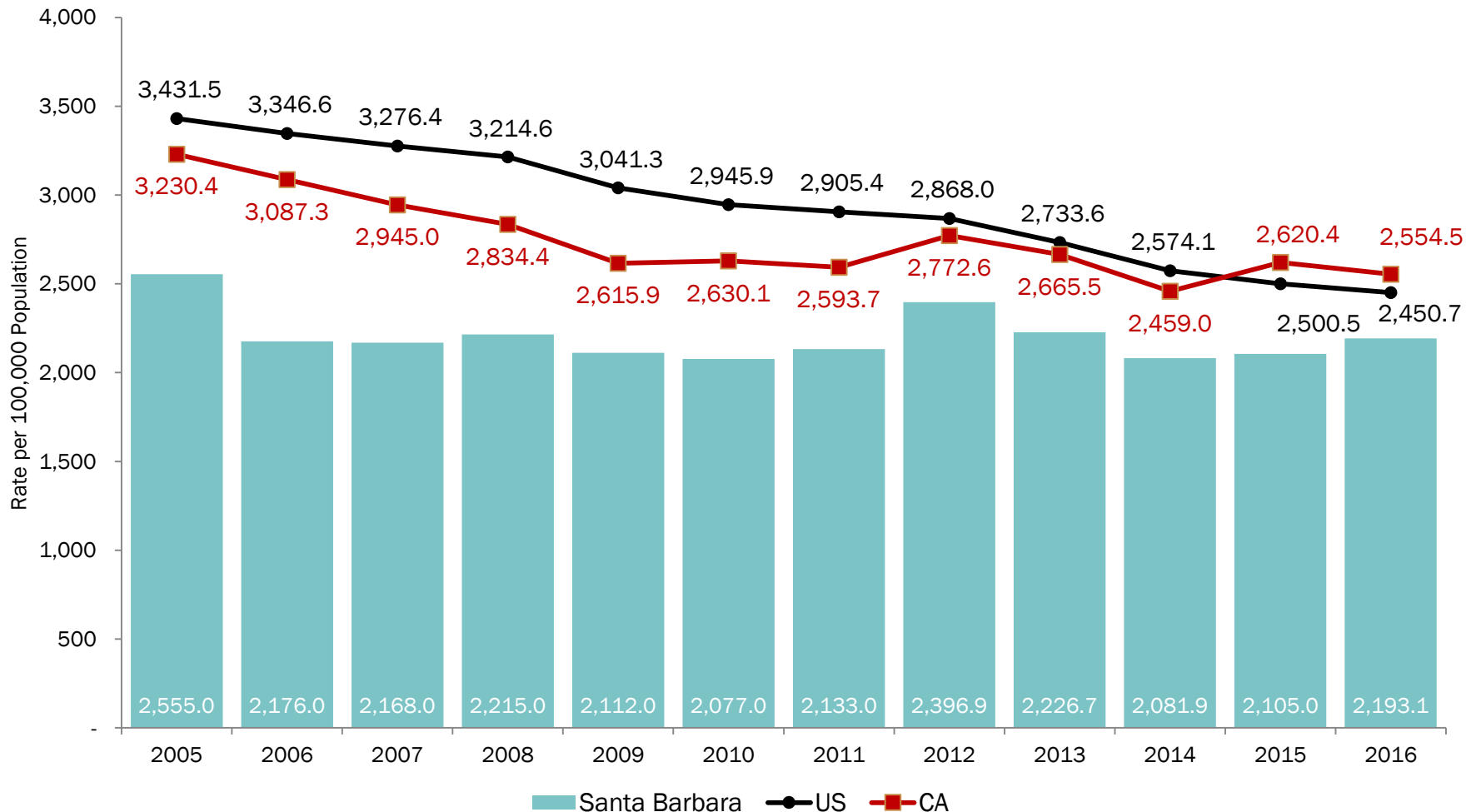
Santa Barbara County's violent crime rate is below the national and state level.



In the FBI's Uniform Crime Reporting (UCR) Program, violent crime is composed of four offenses: murder and nonnegligent manslaughter, rape, robbery, and aggravated assault. Violent crimes are defined in the UCR Program as those offenses that involve force or threat of force.

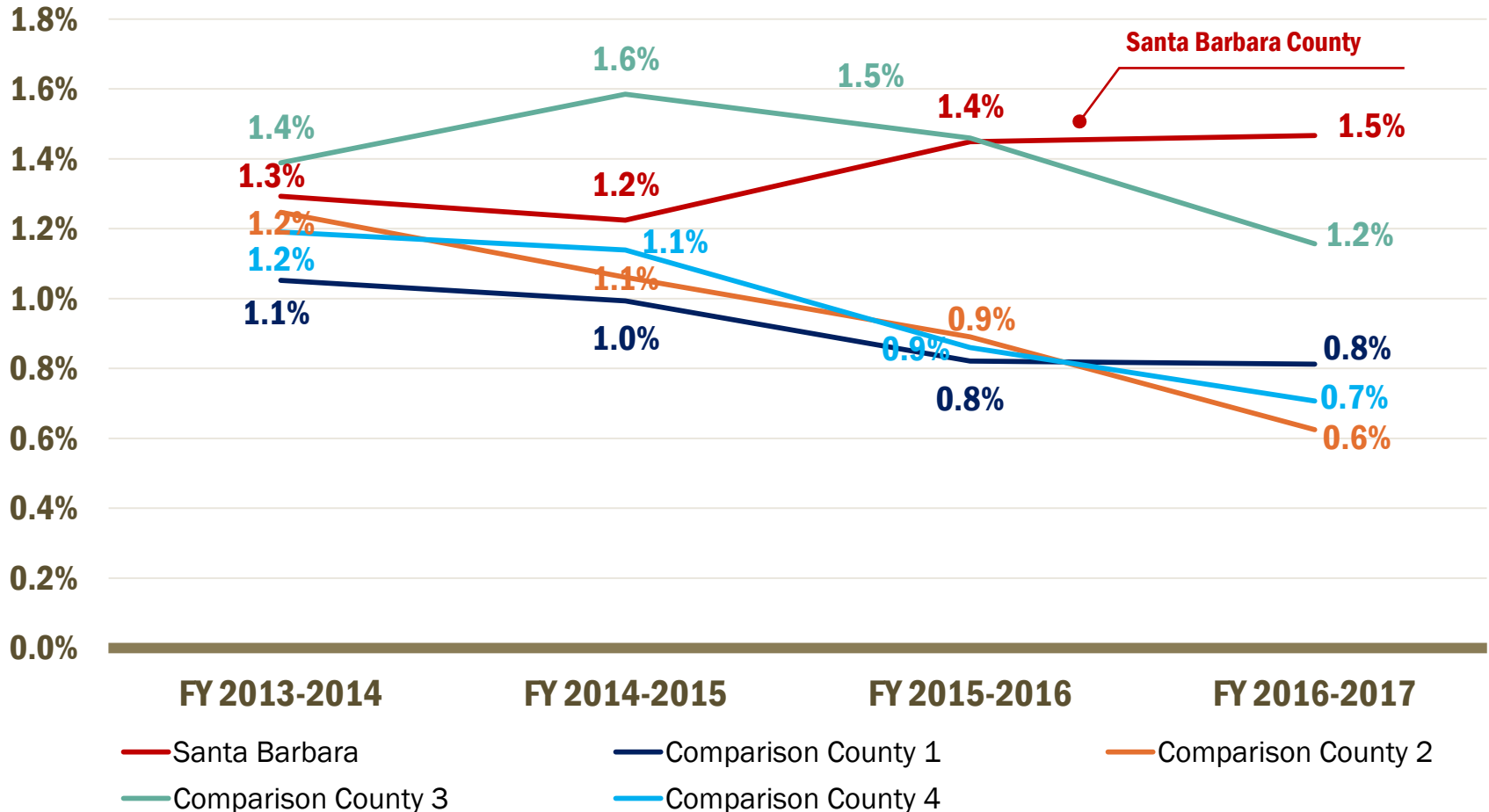
Property Crime Rate

Santa Barbara County's property crime rate is below the national and state level.



Percent of Juvenile Supervised (age 10-17)

Comparison counties have less youth under probation supervision.



Juvenile Supervision Types

Welfare and Institutions Codes (WIC)

654

Informal
Probation

+ Typically 6
months

654.2

Informal
Probation with
Court
Involvement

+ Typically 6
months

+ Petition
dismissed at
successful
completion

725

Probation
without
Wardship

+ Misdemeanor
or felony

+ Not to exceed 6
months

790

Deferred Entry
of Judgment

+ 1st felony

+ 14 or older

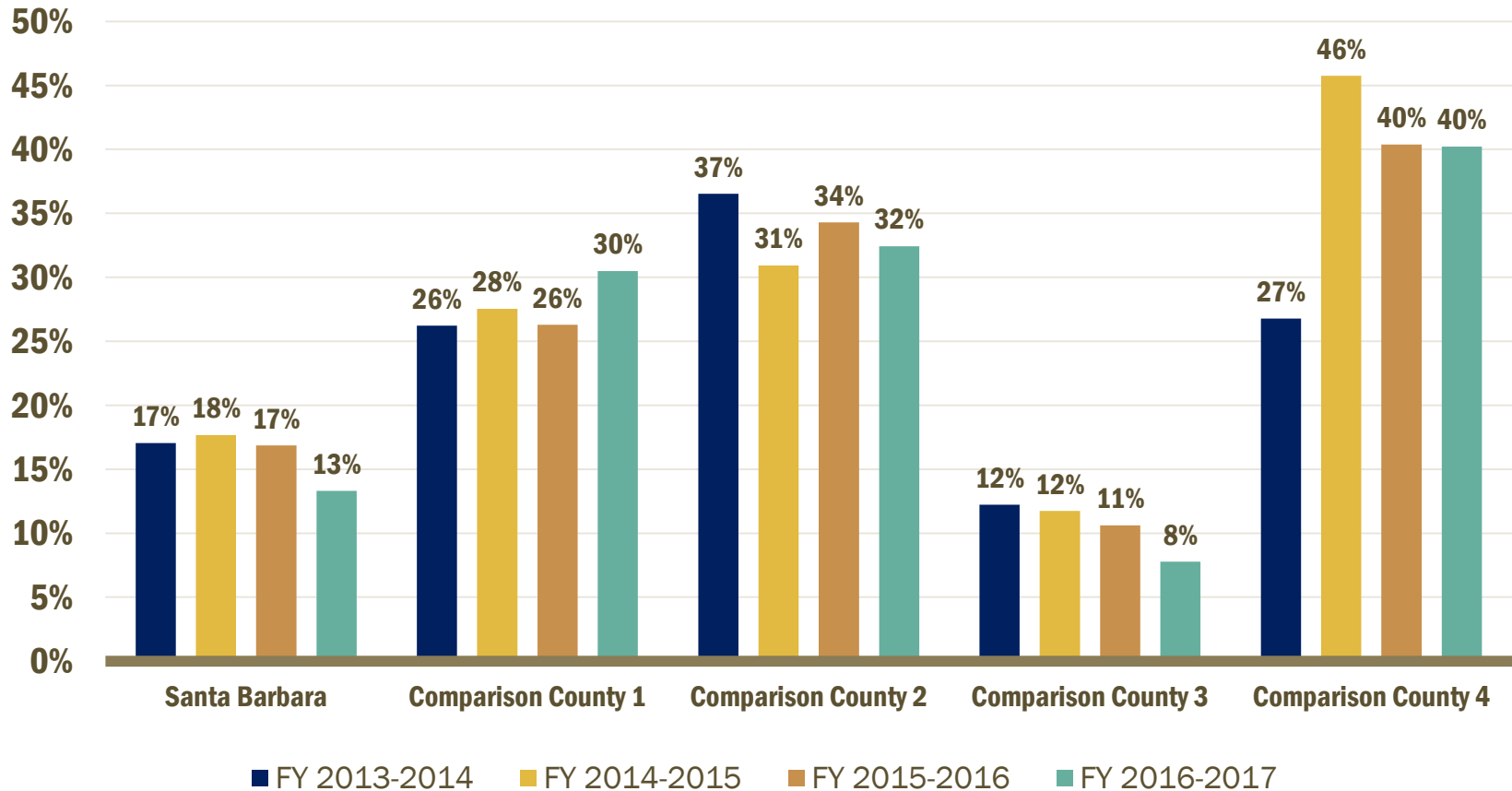
602

Ward of the
Court



Categories other than Wardship

Santa Barbara utilizes diversion options less than comparison counties.

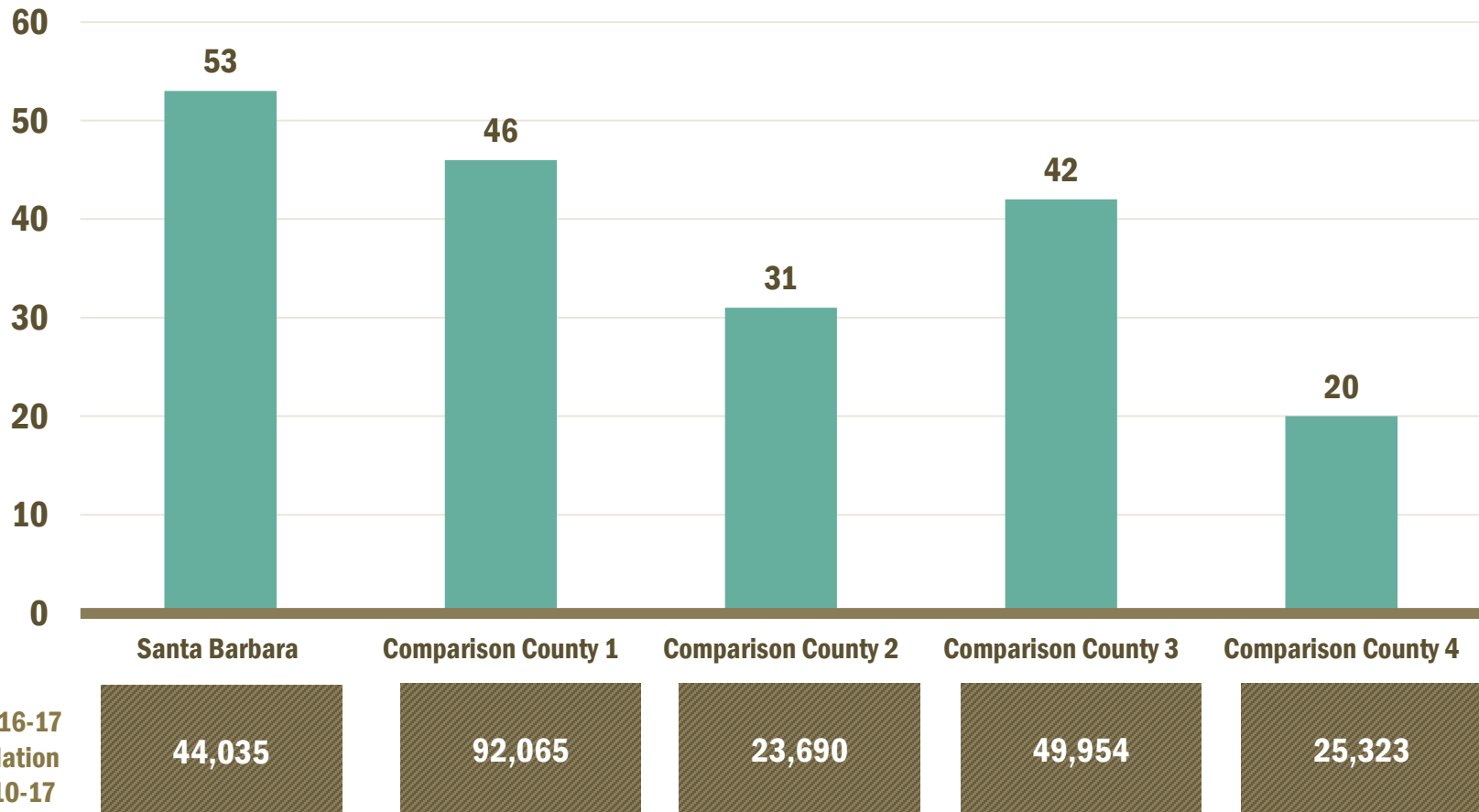


Source: CPOC

(<https://public.tableau.com/profile/oconnellresearch#!/vizhome/CaliforniaCountyProbationDataDashboard-DRAFT/CPOCProbationSurvey>)

Juvenile Hall ADP by County in FY 2016-2017

Santa Barbara County's juvenile hall population is higher than comparison counties.



Source: Board of State and Community Corrections July data for each reporting year
<http://app.bscc.ca.gov/joq/jds/QuerySelection.asp>

Early Findings

Court Wardship for Misdemeanor Offenses

- Under-utilization of diversion options.
- Misdemeanor citations generated on school campus requires further review.
- Level of Court Interventions often driven by parent request.

Early Findings

Juvenile Institutions

- Detention for youth 14 years of age or younger.
- One-third of youth in Juvenile Hall were in custody for a technical probation violation.
- Over 50% of youth in Los Prietos Boys Camp most serious offense was a misdemeanor.

Strategies

Implemented

- Analysis of criminogenic risk and needs tool options.
- Juvenile intake assessment process and booking criteria implemented.

In Progress

- Increase utilization of diversion opportunities.
- Minimize exposure of low and medium risk youth to higher risk youth.
- Develop an inventory of local programs utilized by justice-involved youth and determine if interventions are evidence-based.

Next Steps

Where we go from here...

- Maximize the use of a Risk-Needs-Responsivity model of supervision.
- Create and/or leverage existing data.
- Provide additional training to internal and external staff and stakeholders.
- Creation of standing JJCC Workgroup.



JUVENILE DATA MINING

Santa Barbara County Probation Department



Kimberly Shean

Deputy Chief Probation Officer
Santa Barbara County Probation
kshean@co.santa-barbara.ca.us
805-882-3675

Karyn Milligan

Research & Special Projects Manager
Santa Barbara County Probation
kmillig@co.santa-barbara.ca.us
805-882-3653