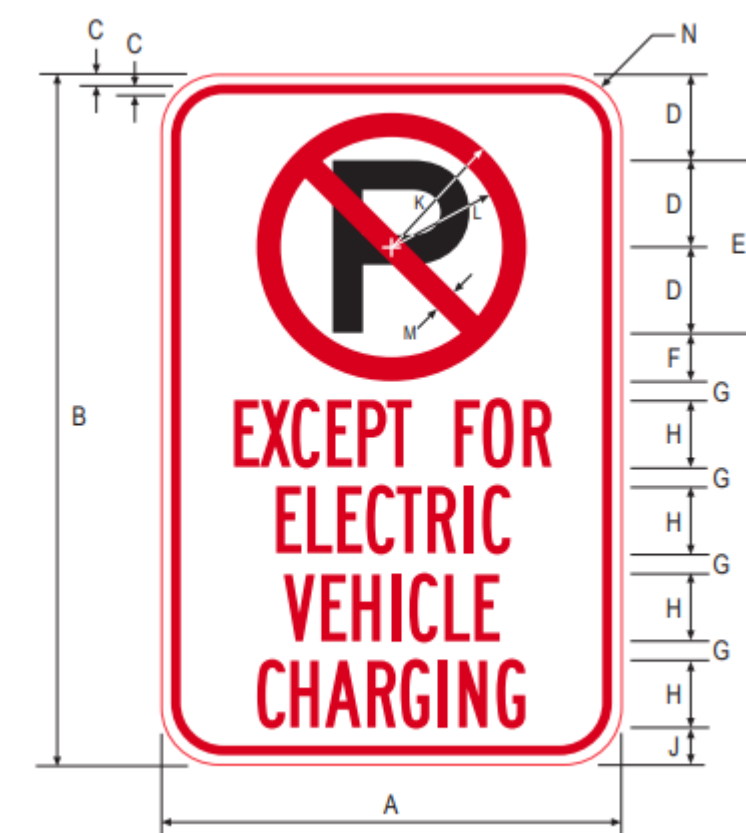
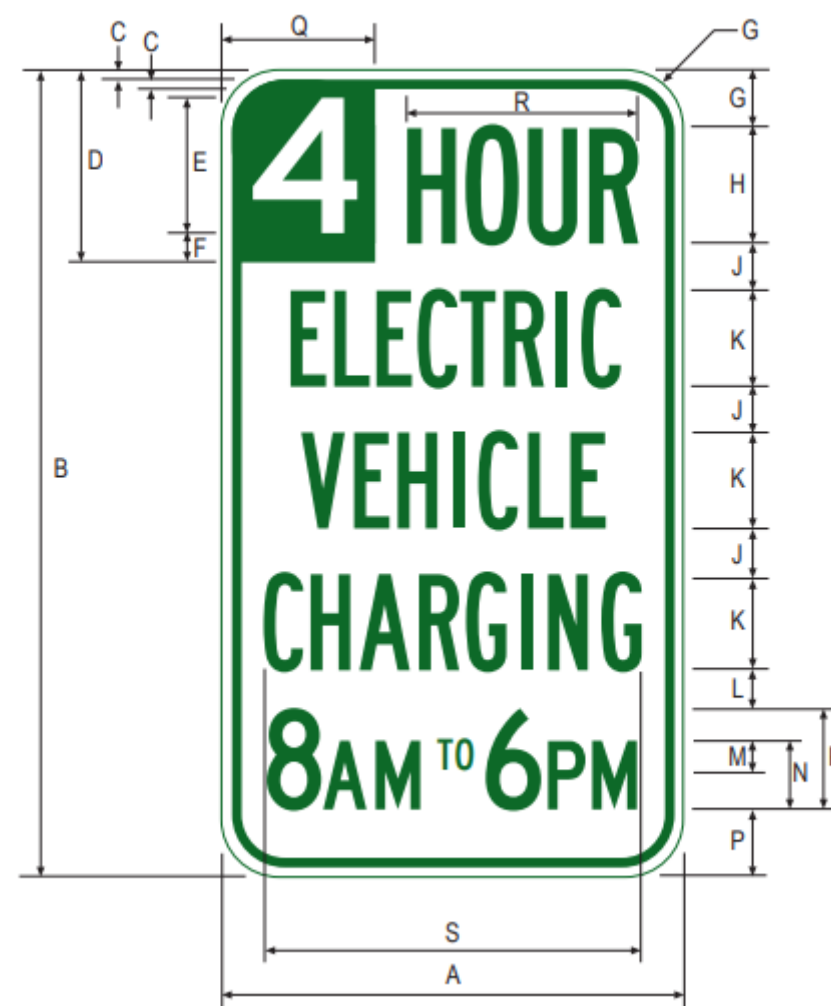
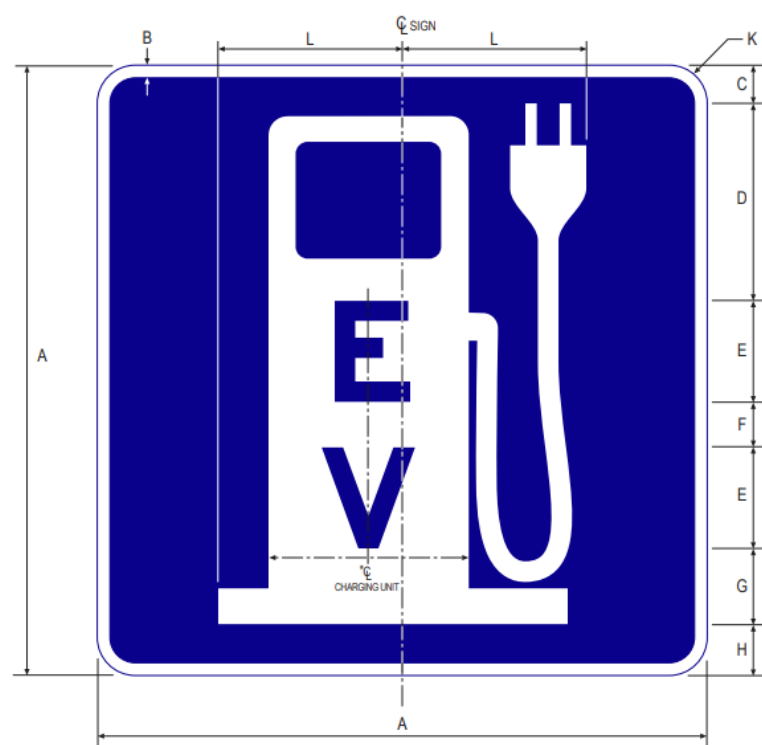


Background

- In addition, to ensure maximum and efficient use of the public stations, a parking fee will be charged for vehicles that remain in the EV charging space beyond four hours.
- Encourage users whose vehicles are fully charged to vacate the space so others may utilize the charging equipment.
- All chargers will be properly signed with standard EV signage



Cost Recovery and Potential Revenue



	Annual per Charger	Annual for 16 EV Chargers
Potential Parking Fee Revenue ¹	\$ 840	\$ 13,440
Electric Cost Recovery ²	\$ 3,016	\$ 48,250

1. Assumes an average of 30 minutes of parking fee time per day per charging spot (parking time begins at 4 hours and one minute).
2. Assumes 7.5 hours of charging time per day per charger

Fee Collection Method



- Fees will be collected using software built into the PowerFlex charging stations
- EV driver downloads the PowerFlex app from the Apple App Store or Google Play Store and installs it on their smartphone.
- Once they log into the app, they can connect their car to the charger and scan the QR code on the charger to begin charging.
- Each quarter, PowerFlex will submit payments to the County that are collected from end users
- Remittance will include the base energy costs plus fees collected for parking over the four hour period.
- County owned vehicles will not be required to use the app and will not pay this fee.

Recommendation



- Adopt a Resolution establishing electric vehicle (EV) charging and parking rates and fees relating to public use of EV charging equipment in the Calle Real Campus, Downtown Administrative Building, Lompoc campus, and Betteravia Campus parking lots

Locations



GENERAL SERVICES

Admin Parking Lot – Santa Barbara

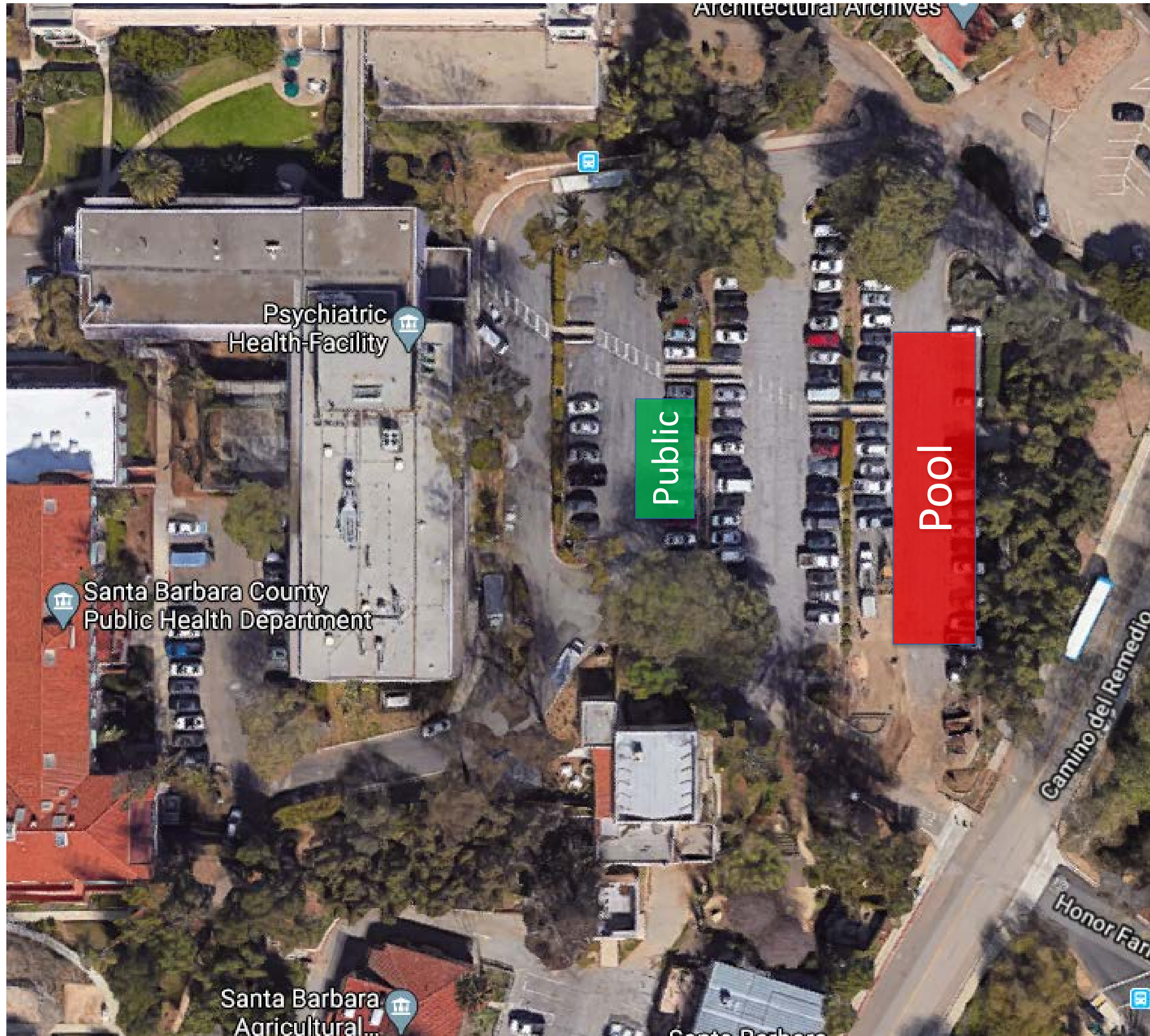


Locations



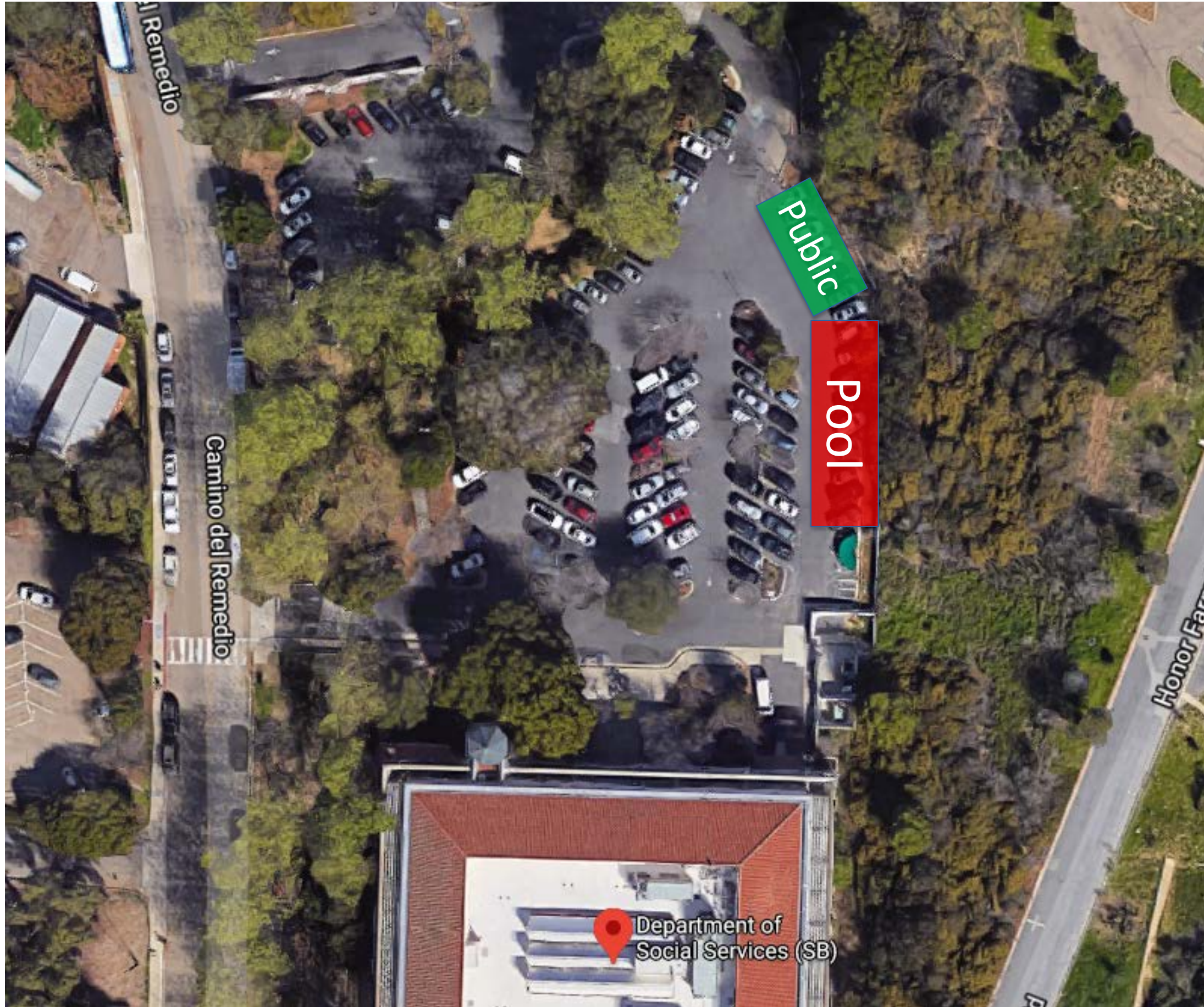
GENERAL SERVICES

Calle Real – Public Health



Locations

Calle Real – Social Services



Locations

Lompoc – Social Services

