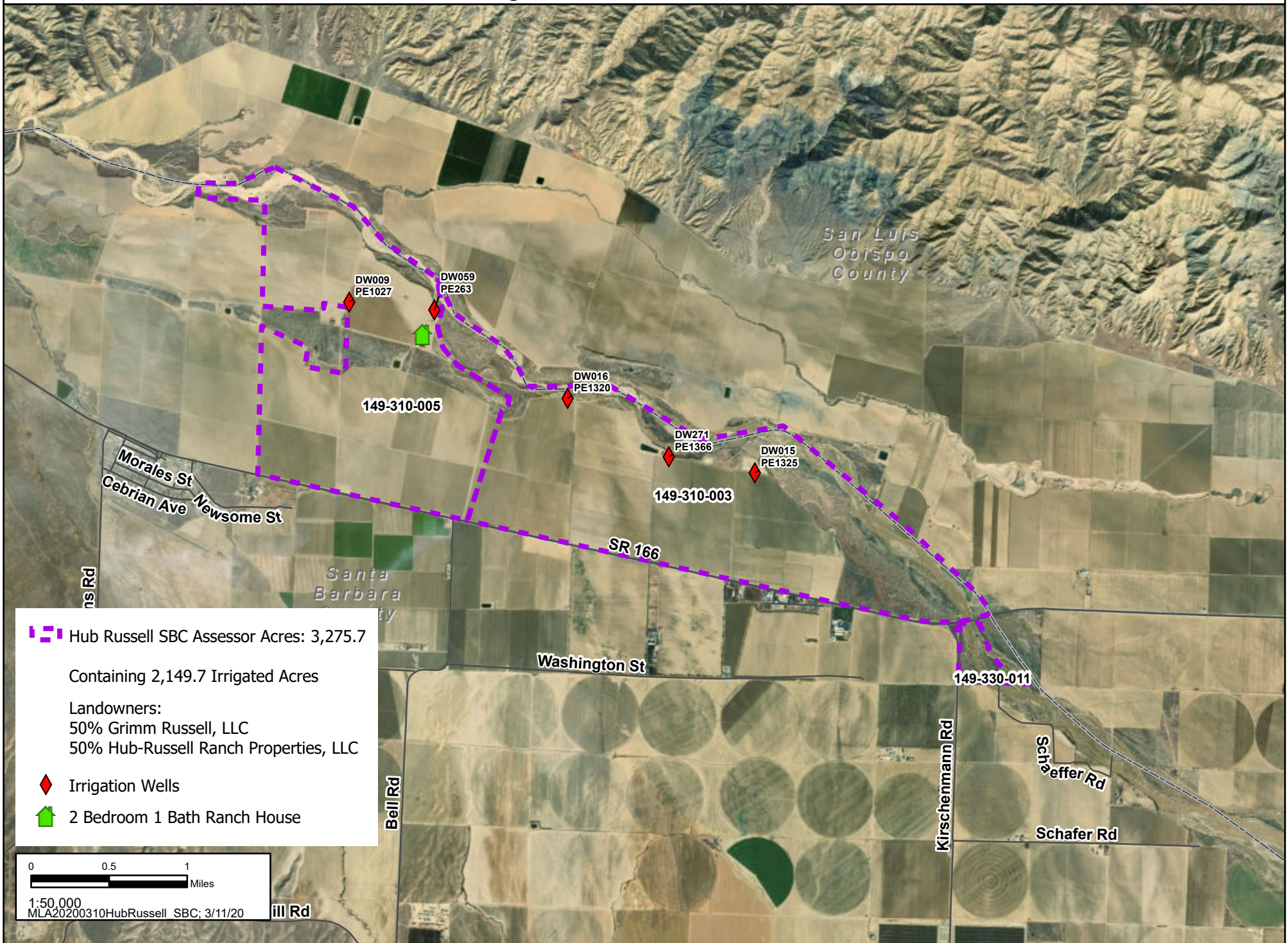




Hub Russell Ranch Ag Preserve # 20AGP-00000-00005




 Hub Russell SBC Assessor Acres: 3,275.7

Containing 2,149.7 Irrigated Acres

Landowners:
50% Grimm Russell, LLC
50% Hub-Russell Ranch Properties, LLC

 Irrigation Wells

 2 Bedroom 1 Bath Ranch House

