



Board of Supervisors The Novel Coronavirus (COVID-19)

January 12, 2021

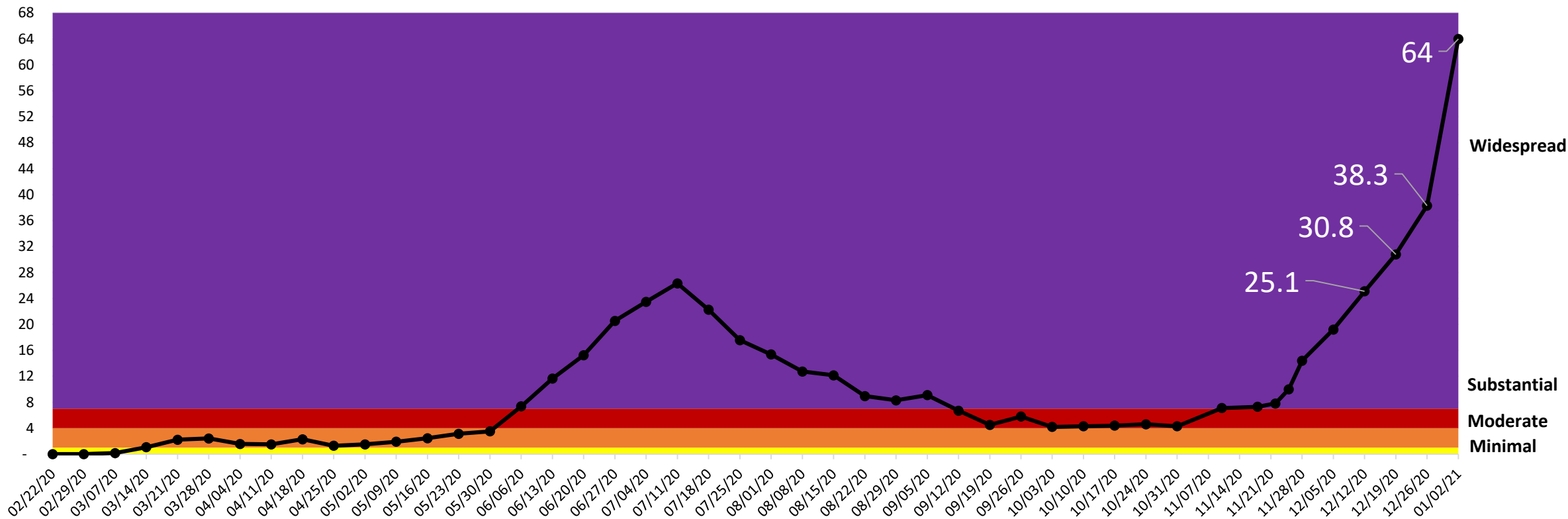
Briefing Topics

- Blueprint Metrics
- Testing
- Contact Tracing
- ICU Capacity
- Vaccination Efforts
- RISE Business Update



ANTICIPATED: Blueprint Metrics for 1/12/21

Santa Barbara County 7-day Average Adjusted* Case Rate per 100,000 Community Residents



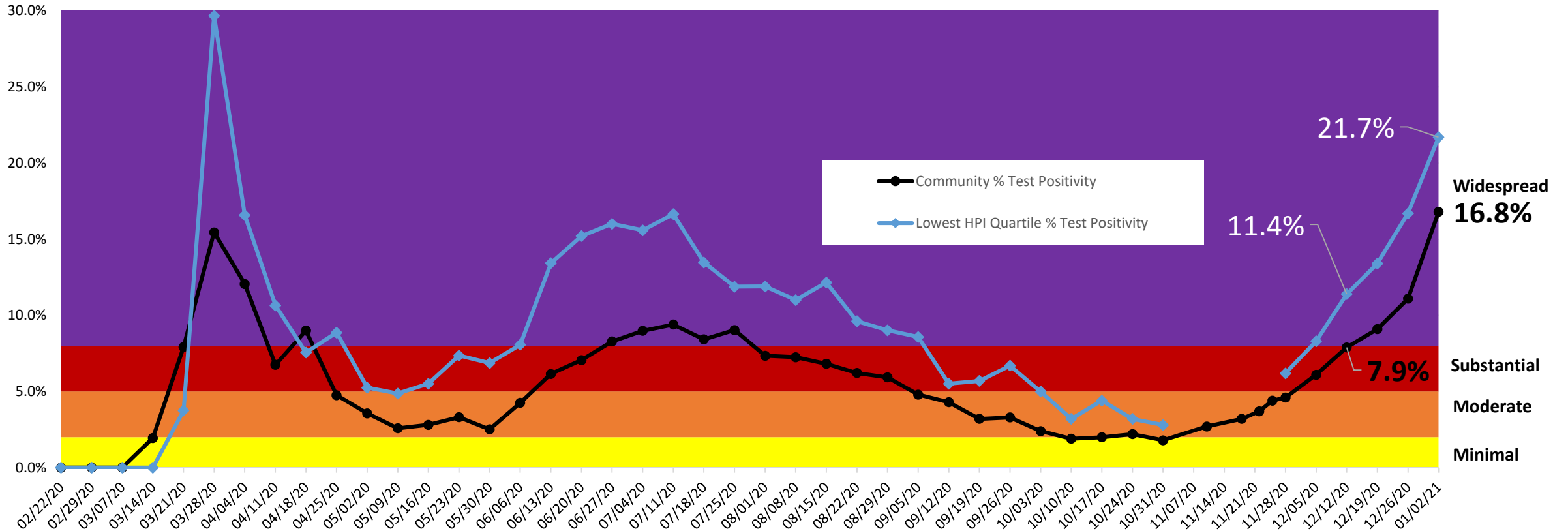
* Case rates as of 8/29 to current have been adjusted based on State metrics; As of 11/15 CDPH changed the Case Rate and Testing Positivity metrics to reflect a 4-day lag instead of a 7-day lag. As of 11/28 data, the State reverted back to the 7-day lag.

update on 1/11/2021



ANTICIPATED: Blueprint Metrics for 1/12/21

Santa Barbara County 7-day Average Community Test Positivity Percent



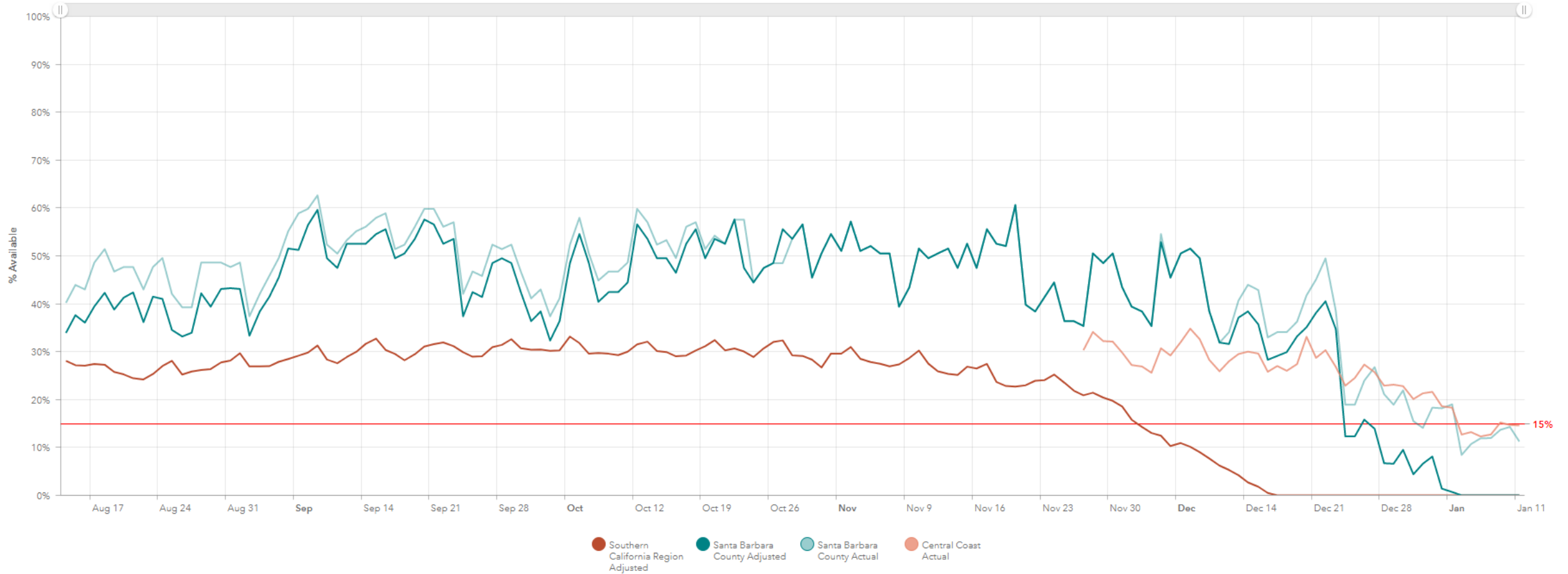
As of 11/15, CDPH changed the Case Rate and Testing Positivity metrics to reflect a 4-day lag instead of a 7-day lag. HPI data was not released the weeks with 4-day lag data. As of 11/28 data, the State reverted back to the 7-day lag.



ICU Capacity

Regional and Local Staffed Adult ICU Bed Availability

Regional Stay at Home Order (SAHO) takes effect when Southern California Region <15%



Testing Opportunities

SITE	OPERATED BY	HRS	CAPACITY	APPT ACCESS
Santa Maria Fair Park	State	7am-7pm Sunday-Thursday	165 tests per day	1-2 weeks
Santa Maria Public Health	PHD	10am-12pm, 1pm-3pm Tuesday-Friday	75 tests per day	Same day/ next day
Buellton	State	7am-7pm Friday-Tuesday	165 tests per day	1-2 weeks
Goleta Community Center	State	7am-7pm Thursday-Tuesday	165 tests per day	1-2 weeks
Isla Vista	PHD	12-5pm Fridays and Saturdays	75 tests per day*	Walk-In Only
Mobile Testing Unit-CenCal Parking Lot	State	7am-7pm Monday-Friday	528 tests per day	Same day/Same week
			Total: 1173 tests per day	



Contact Tracing

- Total: 48 Case Investigators/Contact Tracers
 - Public Health Staff: 18
 - Redirects from county departments: 15
 - State Staff: 15
 - To be hired: 5
- Hours of Operation: 7 days a week
 - Weekday team: 30-34 CICTs
 - Weekend team: 10-13 CICTs



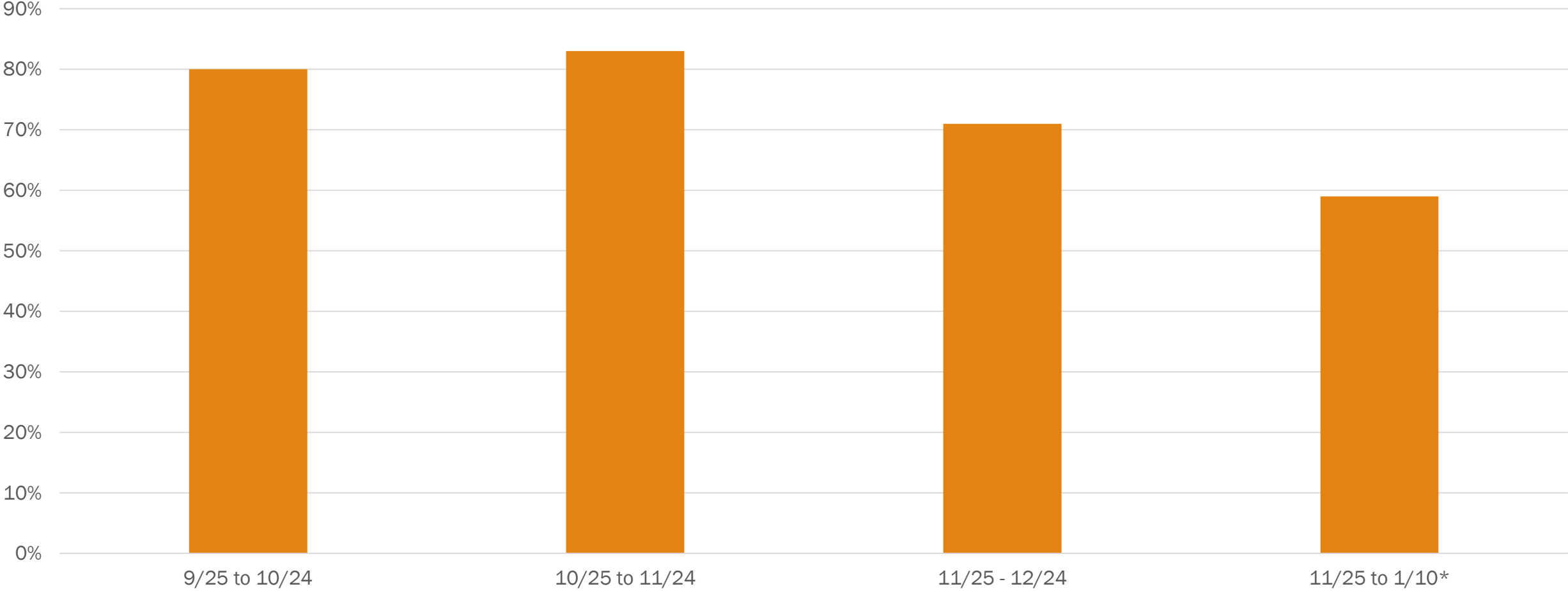
Contact Tracing

- Cases are closed if older than 6 days from the date of lab test
- 3 attempts are made in 24 hours
- Average time to close case and contacts: 2 – 3 days
- Average # of contacts per case: 4 to 8
- Typical # of contacts due to gathering: 10 to 15



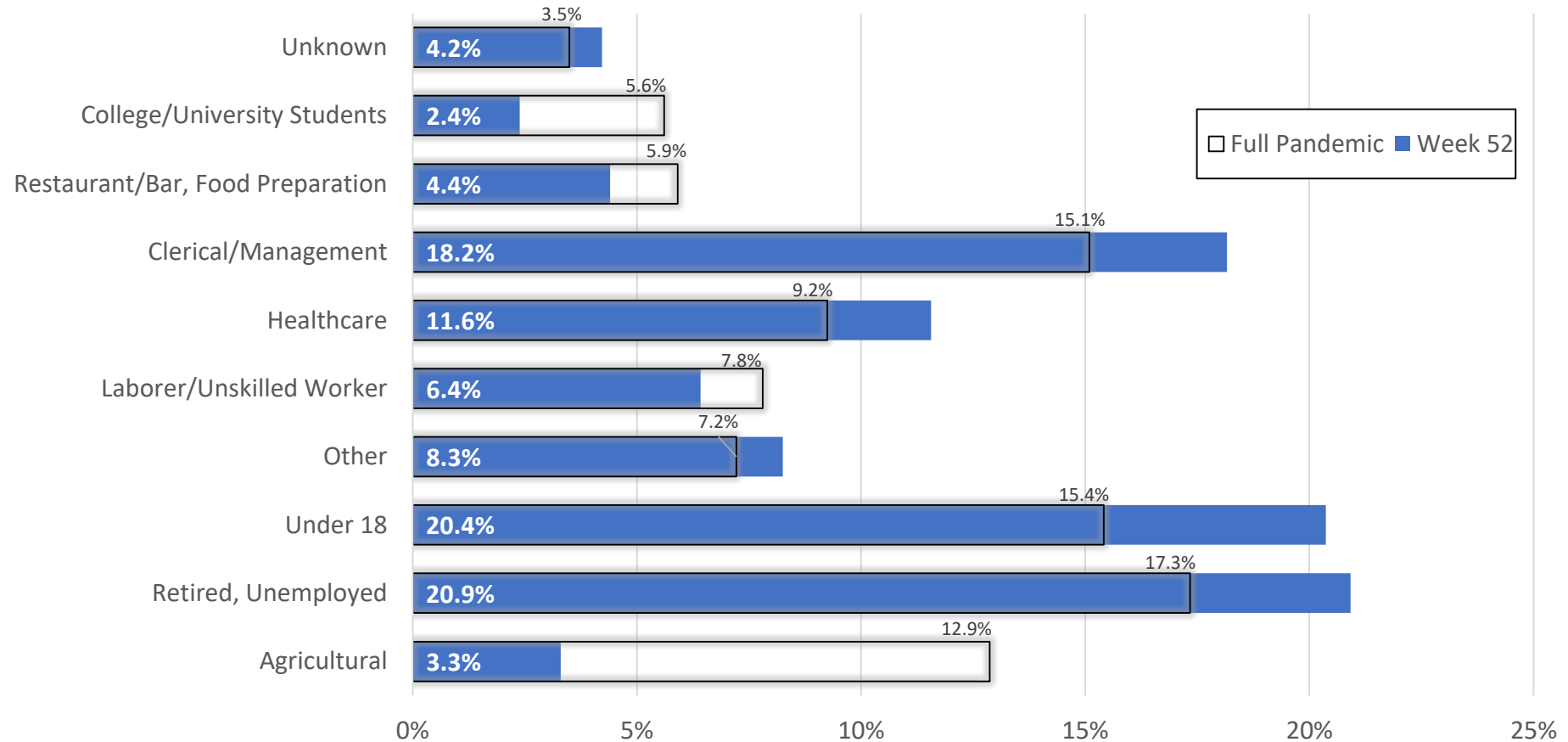
Contact Tracing

Percent of Cases with Case Investigation and Contact Tracing



Contact Tracing: Occupation Type of COVID-19 Cases

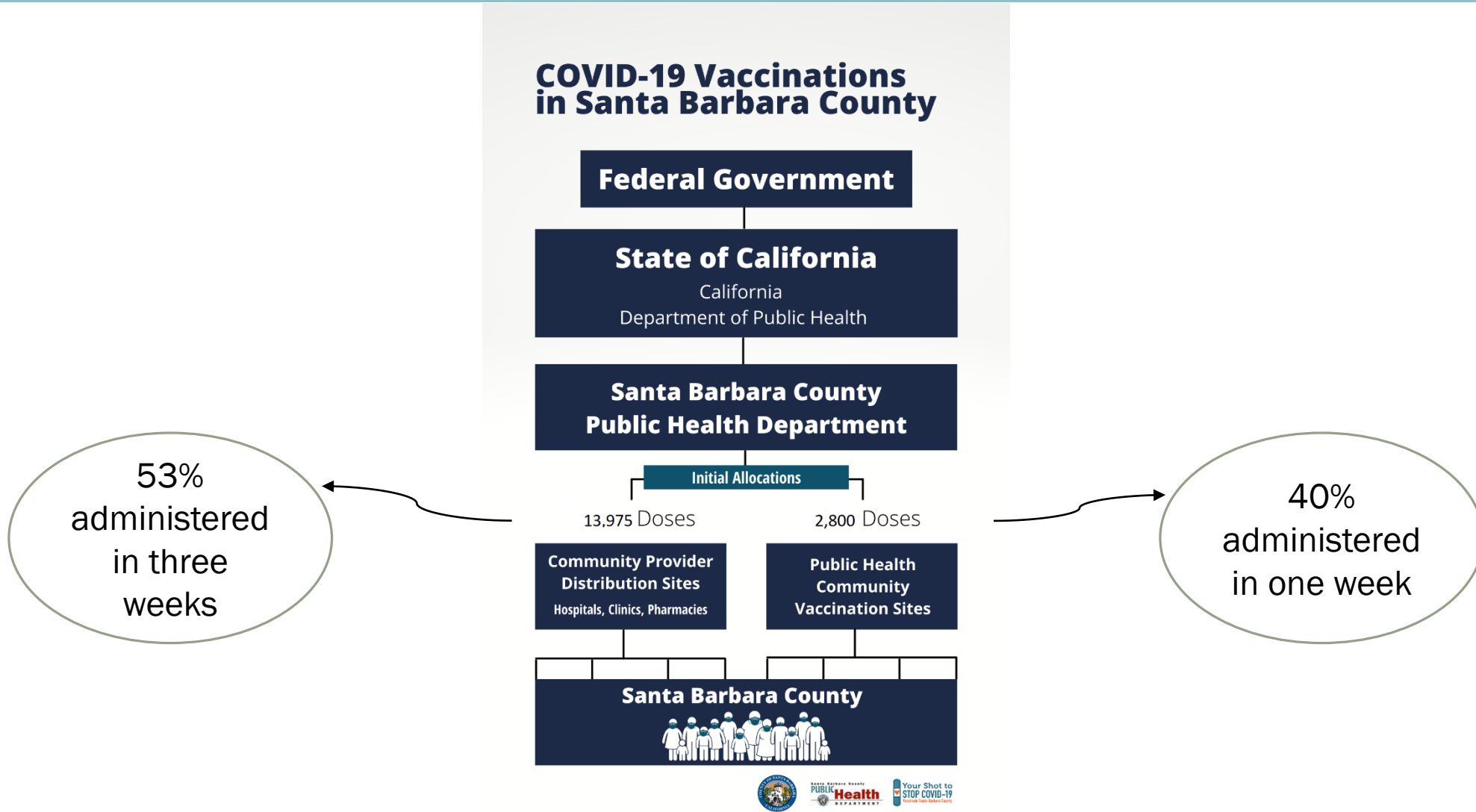
Percentage of COVID-19 Cases by Occupation for Week 52 (N=1,324*)



*779 missing occupations in week 52 nor 7,049 missing occupations for the pandemic are depicted in the chart



Vaccine Allocations



Vaccine Efforts

➤ Who will get the vaccine?

- Anyone who wants the vaccine will have an opportunity to receive it. A phased approach will be used to ensure high-risk community members are prioritized as vaccine distribution continues.

➤ How do people know if they qualify to receive a vaccine?

- Healthcare Providers: vaxprovider@sbcphd.org to register their practice on the list.
- Community members: <https://publichealthsbc.org/vaccine/> for more information on vaccine distribution.

➤ Where will vaccinations be given?

- Public Health community vaccination sites (PODs)
- Healthcare Providers
- Retail Pharmacies



Currently vaccinating: All tiers in Phase 1a

- Patient-facing healthcare workers
 - Acute care, psychiatric, correctional facility hospitals
 - Skilled nursing facilities, assisted living facilities, and similar settings for older or medically vulnerable individuals and residents in these settings
 - Paramedics, Emergency Medical Technicians (EMTs) and others providing emergency medical services
 - Dialysis centers
 - Intermediate care facilities for persons who need non-continuous nursing supervision and supportive care
 - Home health care and in-home supportive services
 - Community health workers, including promotoras
 - Public health field staff
 - Primary Care clinics, including Federally Qualified Health Centers, Rural Health Centers, correctional facility clinics and urgent care clinics
 - Specialty clinics
 - Laboratory workers
 - Dental and other oral health clinics
 - Pharmacy staff not working in settings at higher tiers
 - Non-clinical roles, such as environmental services, patient transport, or interpretation



Next Phase: Early February

Phase 1B Vaccine Distribution Target Populations and Delivery Dates

Phase 1B Tier 1

Early February 2021-Mid-March 2021

Persons age 75 and older

Essential Workers:

Food/Grocery and Agricultural workers

Education & Childcare

Emergency Services (firefighters, Law enforcement ,
probation, corrections)

EMS personnel providing EMS services

Phase 1B Tier 2

Early February 2021-Mid-March 2021

Persons 65 to 74 ~~with underlying medical conditions that place
them at high risk for COVID19~~

Incarcerated individuals (congregate setting)

Homeless and Unhoused Individuals

Essential Workers:

Transportation and Logistical Workers

Industrial Residential Commercial Workers

Critical Manufacturing workers

Registration not available at this time. Registration will open shortly after completion of Phase 1a.



Next Phases

Phase 1C Vaccine Distribution Target Populations and Delivery Dates

Phase 1C Tier 1

Following completion of 1A and 1B

Persons 65 to 74

Persons 16 to 64 with underlying medical conditions that place them at high risk for COVID19

Essential Workers:

Water and Wastewater Management, Defense, Energy, Chemical and Hazardous Materials, Communications and IT and Financial Services

Government Operations and Community Services



Next Phases

Phase 2 & 3 Vaccine Distribution Target Populations and Delivery Dates

Phase 2

Late Spring

All other person 16 years or older and not already recommended for vaccination in Phase 1a, 1b or 1c.

Phase 3

All others not vaccinated





Reopening Your Business in Santa Barbara County



January 12, 2021

Reopening Self-Certification by the Numbers

As of Friday, January 8, 2021



4,533 Business Submittals Countywide

Cities 4,090

Unincorporated 443

TOP 10 INDUSTRY SECTORS

1,076 Retail Stores

911 Restaurants

497 Office Workspaces

191 Hair Salons/Barbershops

183 Limited Services

168 Gyms & Fitness

137 Hotels (Tourism)

116 Wineries/Bars

108 Personal Services

88 Places of Worship





Business Attestation

Find out about the County of Santa Barbara's requirements for you to reopen your business. Learn what is required for different workplaces to reopen including guidance in preparing a plan based upon your industry and how to put the plan into action.

[Click here](#)



Small Business & Community Partnership Enhancement Program

Want to take your business outdoors? Check out this special allowance that provides businesses or other organizations to expand into adjacent public right-of-way outdoor areas in the unincorporated areas of the county.

[Click here](#)



Resources for Businesses

Learn about important information including Federal, State, and local assistance programs available to small business owners and employers. Please check out the County of Santa Barbara's updated list of new programs and policies that may impact your business.

[Click here](#)



Resources for Individuals

If you are a small business owner, employer, employee or a resident and you are interested in assistance that is specifically targeted to individuals and workers, please check out these resources.

[Click here](#)



Local & State Health Orders

Find local and state health orders that may affect your business here. Health orders can have an impact on when businesses may reopen, how goods and services may be delivered to the public and if there are any special health-related requirements of businesses or the general public.

[Click here](#)

Resources for Businesses – Recoverysbc.org

Resources for Businesses

Federal, state and local assistance programs are available to small business owners, employers, employees and residents. The County is organizing the information and will continue to provide updates as new programs and policies are announced.

[SBCWDB COVID-19 Business Resource Guide](#)

[Blueprint for a Safer Economy](#)

[COVID-19 Signage for Your Business](#)

[+ State Resources](#)

[+ Federal Resources](#)

[+ City Resources](#)

[+ Other Local Resources](#)

[+ Document Resources](#)

[+ Emergency Declarations and Orders](#)

[+ Downloadable Info Graphics and Signage for COVID-19 Health and Safety](#)

Business Advise Resources



Economic Development Collaborative : Regional resources for business consulting, funding and strategic initiatives within the regional economy

Link: <https://edcollaborative.com/covid19/>

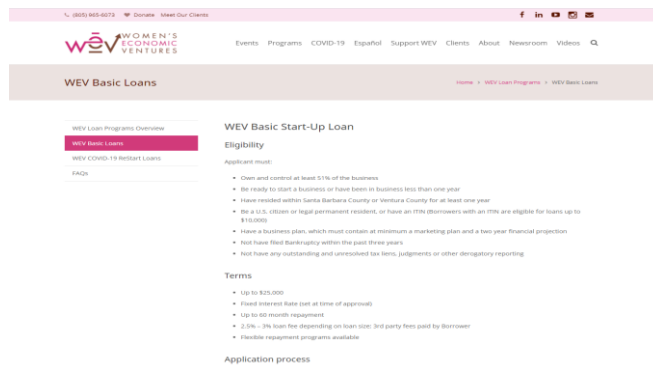
Call: 805-409-9159 (English) 805-309-5874 (Spanish)



<https://edcsbdc.org/>

Assisting Clients in
Ventura and Santa Barbara Counties
805.384.1800

hosted by:



Women's Economic Ventures (WEV): Business consulting and financial loan support to businesses experiencing economic hardship

Link: <https://www.wevonline.org/loans-2/loan-overview/>



Service Core of Retired Executives (SCORE) : Business mentorship, webinars, online resources

Link: <https://santabarbara.score.org/>



State Financial Assistance Information

<https://covid19.ca.gov/business-and-employers/>

- Small Business Hiring Tax Credit, a \$1,000 tax credit for each new employee hired by small businesses (up to \$100,000 per business)
- Interest-free deferral of sales/use tax up to \$50,000 for businesses with less than \$5 million in taxable sales
- California Rebuilding Fund small business loans
- Small Business Disaster Relief Loan Guarantee Program and Small Business Loan Guarantee Program via IBank
- Small Business Debt Relief

State Resources – New Grant Opportunity



Go to: CARELIEFGRANT.COM

Deadline: January 13th

State Approvals: Jan. 15th

GRANT AMOUNTS

The amount of grant funding ranges from \$5,000 to \$25,000. Businesses are eligible based on their annual revenue as documented in their most recent tax return:

Eligible Businesses Annual Revenue	Grant Amount Available Per Business
\$1,000 to \$100,000	\$5,000
Greater than \$100,000 up to \$1,000,000	\$15,000
Greater than \$1,000,000 up to \$2,500,000	\$25,000

California Small Business COVID-19 Relief Grant Program

NEW DATES AND DEADLINES:
START A NEW APPLICATION: DECEMBER 30, 2020 – CLOSES JANUARY 13, 2021 AT 11:59 PM PST
UPDATE AND UPLOAD DOCUMENTS FOR IN-PROCESS APPLICATIONS: JANUARY 6, 2021 – JANUARY 13, 2021 AT 11:59 PM PST



2021-22 Proposed State Budget Issued – Business Highlights

- Immediate Actions to Provide Relief and Safely Reopen Schools
 - **\$2.4 billion for the Golden State Stimulus** – a \$600 state payment to low-income workers who were eligible to receive the Earned Income Tax Credit in 2019, as well as 2020 Individual Taxpayer Identification Number (ITIN) filers
 - **\$575 million** to more than double this year’s funding for grants to small businesses and small non-profit cultural institutions disproportionately impacted by the pandemic
 - **\$70 million** to provide immediate and targeted fee relief for small businesses including personal services and restaurants
 - **\$2 billion** targeted specifically to support and accelerate safe returns to in-person instruction starting in February, with priority for returning the youngest children (transitional kindergarten through 2nd grade) and those with the greatest needs first

2021-22 Proposed State Budget Issued – Business Highlights

- Accelerating Economic Recovery and Job Creation
 - Builds on 2020 action to support small businesses
 - Elimination of the first year of the minimum franchise tax, expansion of small business loan guarantees and creation of new Main Street hiring tax credit.
 - **\$4.5 billion** for Governor’s Equitable Recovery Plan
 - \$1.5 billion for the infrastructure and incentives to implement the state's zero-emission vehicle goals
 - \$1.1 billion immediate relief for small businesses
 - \$777.5 million for a California Jobs Initiative to provide incentives targeted at accelerating investment and job creation
 - \$353 million for workforce development
 - \$300 million for deferred maintenance and greening of state infrastructure
 - **\$385 million** for targeted investments for more sustainable agricultural industry



Federal Coronavirus Relief Package – Businesses/Industries

- \$900 billion relief package
 - **\$284 billion** for the Paycheck Protection Program (PPP); a forgivable loan program targeting small businesses. Businesses that previously received a PPP loan are eligible for another round of funding.
 - **\$20 billion** for Economic Injury Disaster Loans (EIDL) for small businesses.
 - **\$15 billion** for cultural venues, including live event venues and movie theaters.
 - **\$45 billion** for transportation; including \$16 billion for airlines and \$14 billion for transit systems.
 - **\$82 billion** for schools; K-12 and colleges.



Federal Resources – Individuals and Covid-19 Response

- \$900 billion relief package continued
 - A one-time payment of up to \$600 for individuals making less than \$75,000 per year. This represents one-half of the amount approved as part of the CARES Act last March.
 - \$300 per week federal supplement to state unemployment benefits for 10 weeks.
 - Extension of the Pandemic Emergency Unemployment Compensation program for 11 weeks. This program, as enacted by the CARES Act, was originally slated to expire next week.
 - Extension of the Pandemic Unemployment Assistance program for 11 weeks, benefitting self-employed and gig economy workers. This program was also originally set to expire next week.
 - \$28 billion for acquisition of vaccines and distribution.
 - \$20 billion to states for continued COVID-19 testing.
 - \$20 billion for health care providers.
 - \$13 billion for the Supplemental Nutrition Assistance Program (SNAP).
 - \$25 billion for rental assistance to families facing eviction.



County Contact Information and Resources

General Business Information: www.RecoverySBC.org

Business Guideline Questions Email: EHSadmin@sbcphd.org

RISE Ambassadors

Email: RISEAmbassador@countyofsb.org

Phone: (805)681-5508

SBCPEP Right-of-Way Application Questions:

Santa Barbara Permit Office (805) 681-4990

Santa Maria Permit Office (805) 803-8750

Home Delivered Meals for Seniors During COVID Pandemic



- Request for Information sent out to 11 providers
- Focused on seniors who are low-income, meeting criteria for home delivered meals and without younger people present in the household
- Responses received from 6 providers
- 4 Providers determined to be in need related to support of existing services

Assessment of Need



- The need identified is related to 272 seniors currently receiving meals and 88 on waiting lists who will not continue to be served without additional funding
- Cost per month to serve these seniors is \$77,085

Next Steps



- Request guidance from the Board regarding any desired action so that an item can be prepared for Board consideration and possible action at a future Board meeting.

**STRONGER
TOGETHER.
SAFELY APART.**