



# Board of Supervisors The Novel Coronavirus (COVID-19)

May 18, 2021

# Briefing Topics

- Blueprint Metrics
- Vaccination Efforts
- Masking Guidance



# ANTICIPATED CDPH Monitoring Status: 5/18/21

Santa Barbara County metrics

2.1

Adjusted case rate for tier assignment

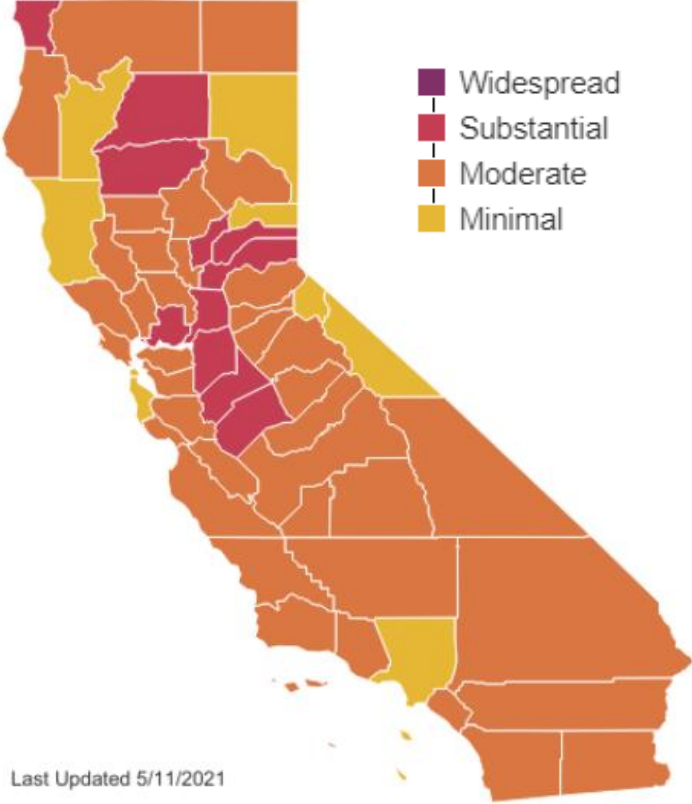
New cases per day per 100K (unadjusted)

2.3

Positivity rate

1.0

Health Equity Metric: 1.3



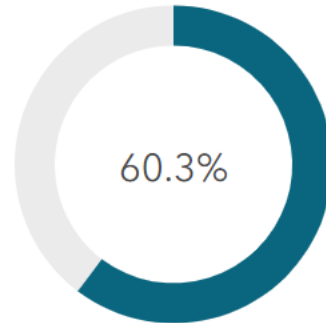
Last Updated 5/11/2021

All data and tier assignments are based on results from week ending May 8th

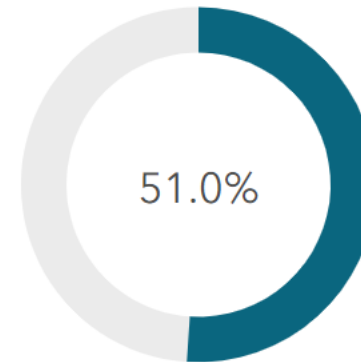


# Vaccination Rates, as of May 16th

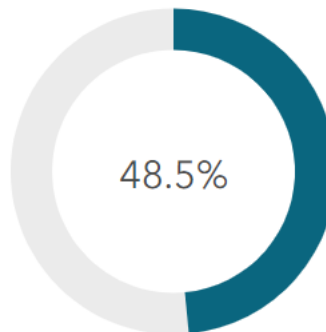
% of Eligible SB Individuals Vaccinated  
(Eligible persons 12+ years old, first or single dose)



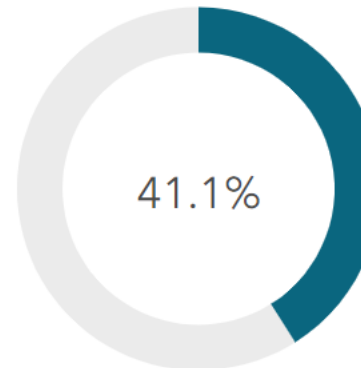
% of SB County Vaccinated  
(first or single dose)



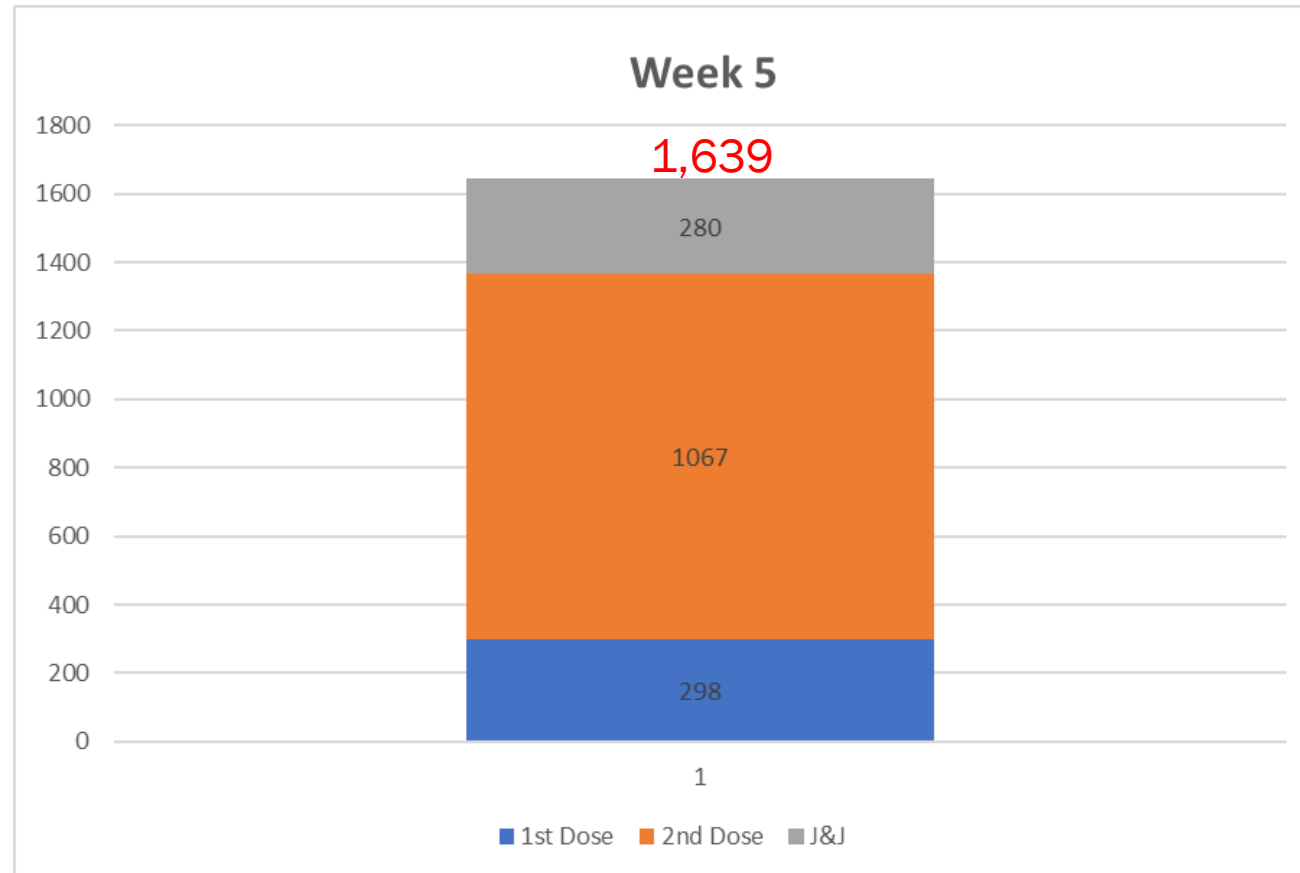
% of Eligible SB County Fully Vaccinated  
(Eligible persons 12+ years old, single or two doses)



% of SB County Fully Vaccinated  
(single or two doses)



# Mobile Vaccination Program



# Vaccine Distribution for Week May 17

## TPA Total Allocation

Sansum Clinic	Pfizer 1 <sup>st</sup> doses	1,170
Goleta Valley Cottage Hospital	Pfizer 2 <sup>nd</sup> doses	5,850

**TOTAL : 7,020**



# New Vaccination Site

- Santa Maria Fairpark Pavilion
- Vaccine: Pfizer
- Eligible Population: 12+
- Hours:
  - Sunday – Wed: 10:00am - 7:00pm
  - Thurs: 11:00am – 8:00pm
- Appointments: MyTurn
- Or walk-up



# School-based Vaccination Clinics for 12+

DATE	SITE	Location
May 18 - 20	Righetti High School	Orcutt
May 25 - 17	To Be Confirmed	Santa Barbara
May 27 - 28	Mary Burren Elementary School	Guadalupe
June 1 - 3	Carpinteria High School	Carpinteria
	To Be Confirmed	Santa Ynez





# Partnerships to Vaccinate Schools

- Cottage Hospital: South County schools
- Lompoc Valley Medical Center: Lompoc Unified School District
- Public Health Department @ Fairpark: Santa Maria High School

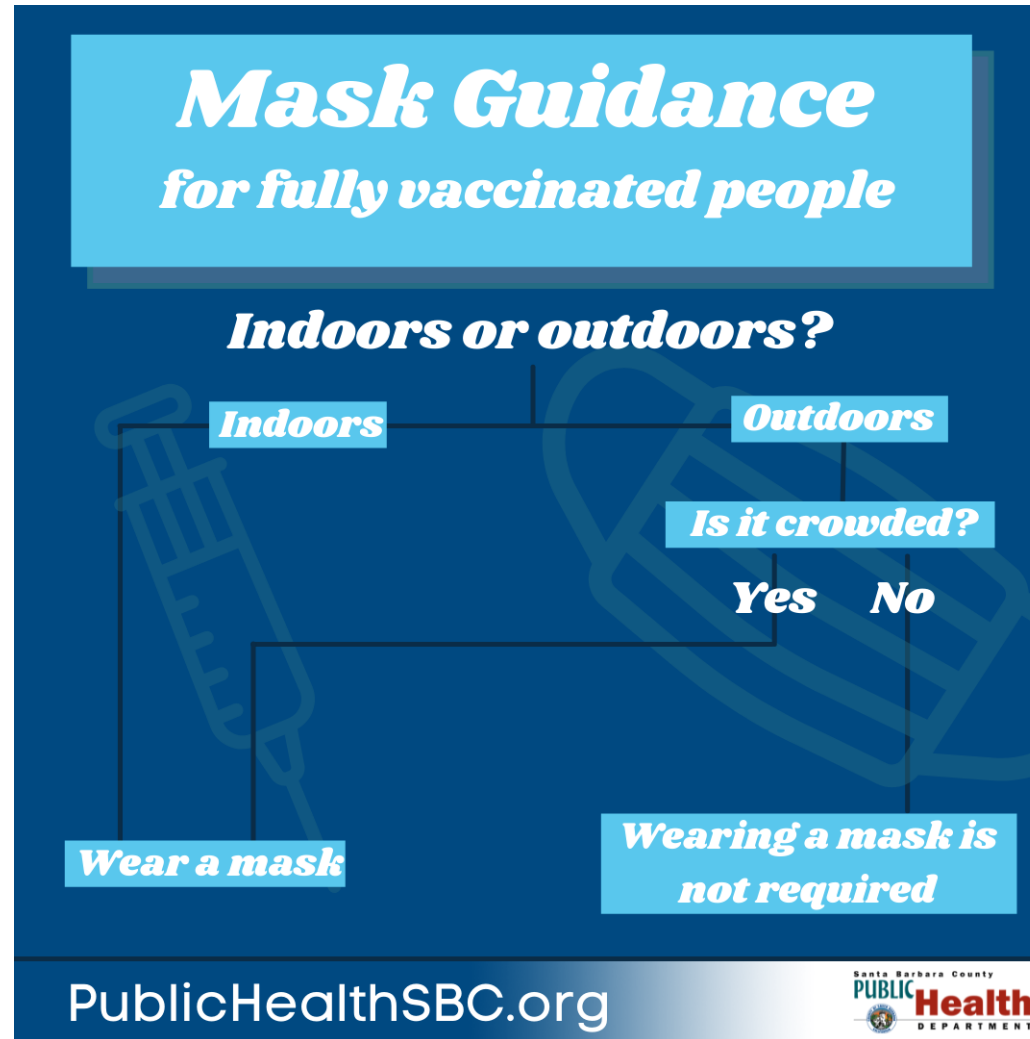


# Mask Guidance

- Until **June 15**, CA will keep current masking guidance WITHOUT any changes
- June 15: CA will be moving “Beyond the Blueprint”
  - State plans to implement the CDC’s masking guidelines to allow fully vaccinated Californians to go without a mask in most indoor settings
- CA Priorities for next four weeks:
  - Interrupt transmission in high-risk indoor setting to protect workers, unvaccinated children, & immunocompromised persons
  - Continue to vaccinate all eligible persons, especially in health equity metrics communities



# Current Mask Guidance for Californians



**STRONGER  
TOGETHER:  
FULLY VACCINATED.**