

Delta Variant Updates & Hospitalizations

Lynn N. Fitzgibbons MD
Infectious Diseases, Cottage Health

Presented to the Santa Barbara County Board of Supervisors
Tuesday August 16th, 2021

Vaccines, Breakthrough Cases & Boosters

Many studies have looked at neutralizing antibody levels, and at real-life results for people who have had each of the three vaccines available in the US

- Pfizer
- Moderna
- Johnson & Johnson

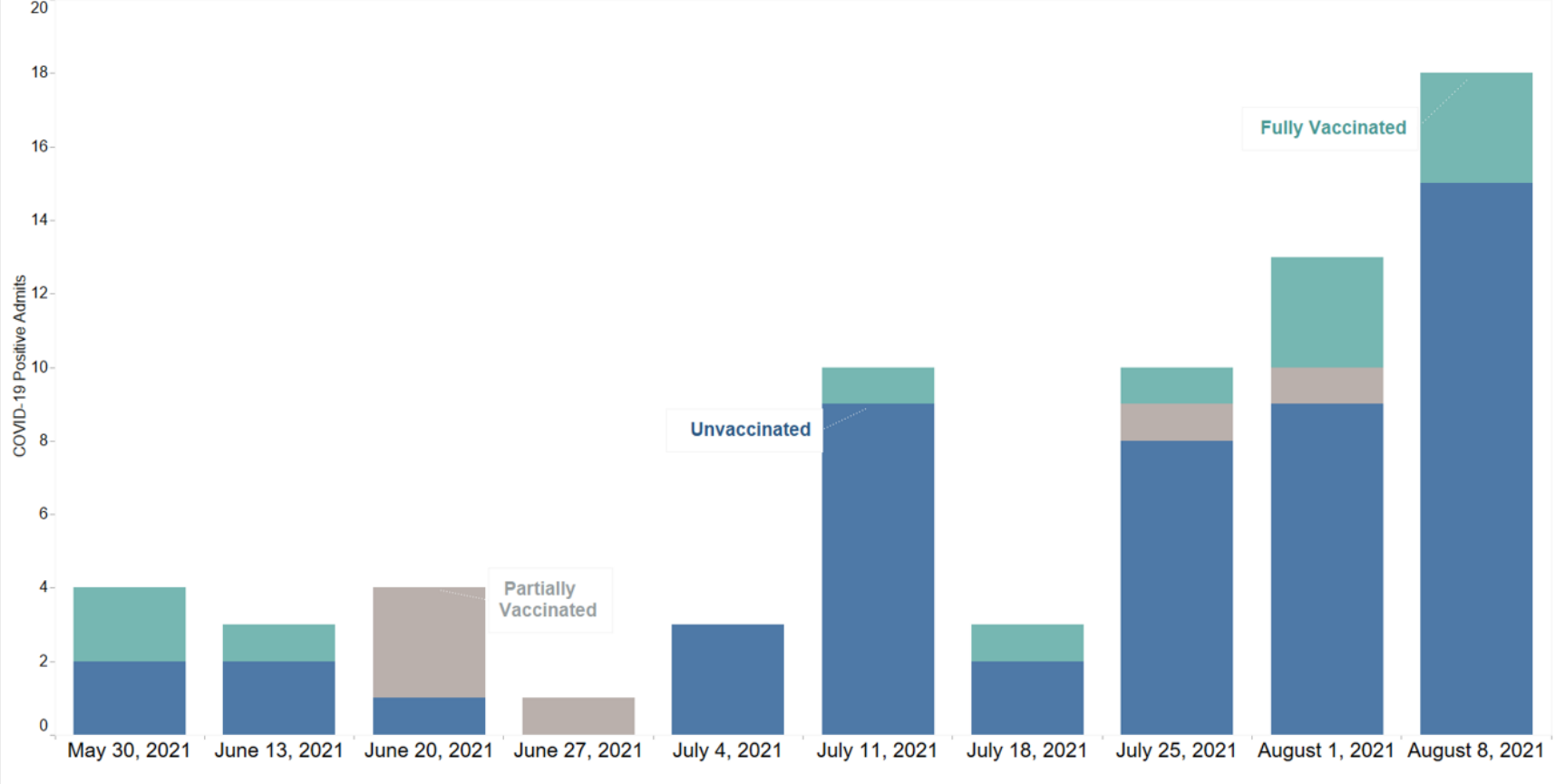
These are complicated questions to answer, with many variable factors to consider and sometimes variable results... and so it's important to focus on recurrent themes:

- **Our vaccines continue to prevent severe disease, hospitalization and death**
- Vaccine breakthrough cases occur with delta.
- Understanding exactly how infectious these breakthrough infections are is very important
 - High viral loads generally correlate with high infectivity
- Protection may not be as long-lived as desired, and the role of booster vaccine doses are being considered for the general population
 - EUA expanded for SOT/immunocompromised, 8/13/21

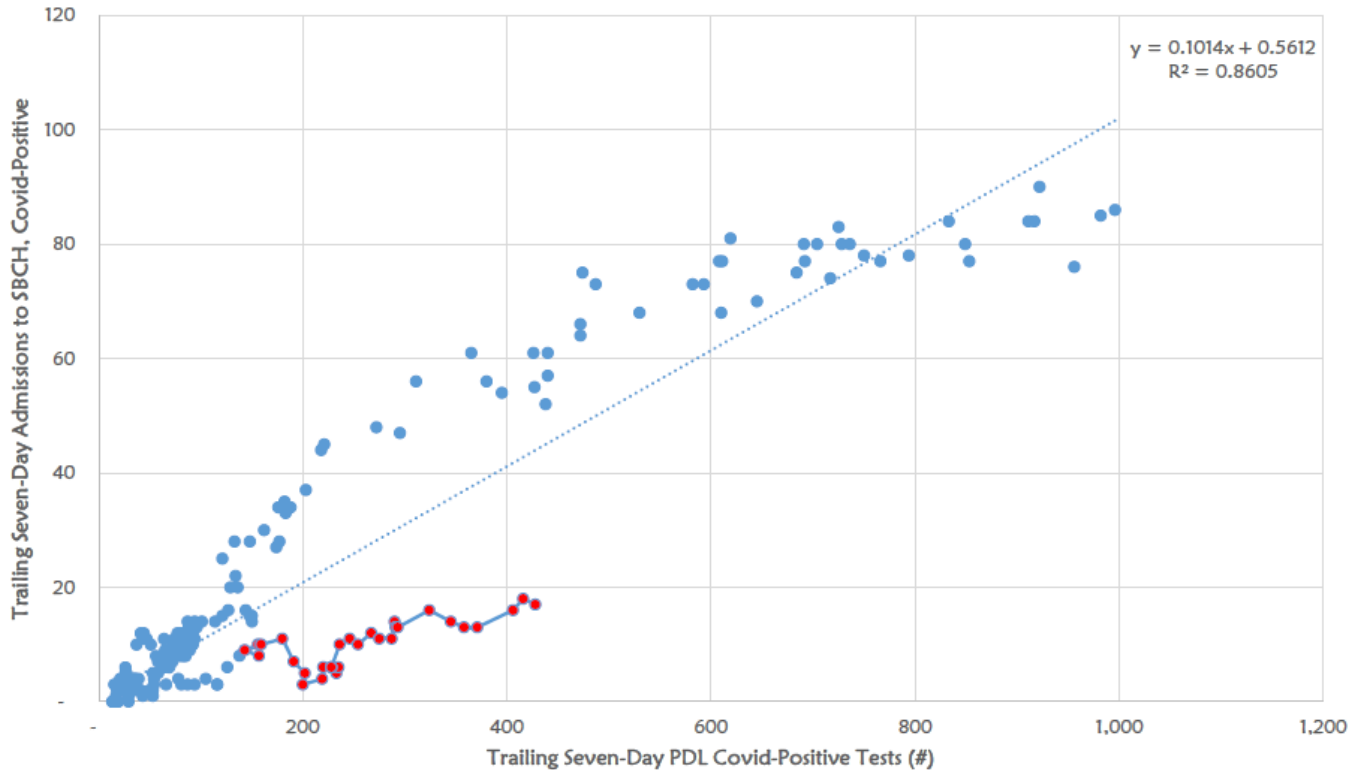
COVID-19 Admits by Week

Reporting period: 6/1/2021- 8/15/2021

Notes: Covid-19 positive confirmed with laboratory tests; includes inpatient and observation patient classes; CDPH data definitions of 'partially' and 'fully vaccinated' used in report.



Correlation Between Positive PDL Tests and SBCH C+ Admissions
Jan 1, 2021 through Current
Prior 30 Days in Red



Blue Dots: Winter Surge
Red Dots: Delta Surge

Why did the line move?

- More testing?
- More cases in people less likely to become severely ill (e.g. the vaccinated or the young)?
- Other factors?

Thank you
